

MK Diamond Products, Inc.
 1315 Storm Parkway
 Torrance, CA 90509-2803

SPECIFICATION SHEET			Date 10/2/19
MK Part Number 172902	MK Description MTR, 10HP 575V 3PH 1725RPM WEG	Revision -	
Manufacturer/Supplier P/N 01018ET3H215T-S	Manufacturer/Vendor Description Rolled Steel NEMA Premium Efficiency 10HP 4P 213/5T 3Ph 575V 60Hz		
Manufacturer Information WEG INDUSTRIES JARAGUA DO SUL, BRAZIL	Supplier Information HILL HOUSE PRODUCTS SAN CLEMENTE, CA	Alternate Manufacturer	

Specifications:

		NEMA Premium			3PT9 US LISTED FOR SAFE AREA		US Energy Verified
MADE IN MEXICO							
MAT: 12675407 CC029A				For 60Hz: Class I, Zone 2, IIC			
W01.TE0IC0X0N				Class I, Div.2, Gr. A,B,C,D - T3			
HT010504NPW01				Div 2 Inverter Duty (SF1.00)			
05SET2019 S/N:				CT 2:1/VT 1000:1			
PH 3	FR 213/5T	HP(kW) 10(7.5)		Hz 60			
V 575				RPM 1760			
A 9.76				DUTY CONT.			
SFA 11.2			CODE H	DES B	IP55		
SF 1.15	INS CL F	ΔT 80K	AMB 40°C	ENCL TEFC			
ALT 1000 m.a.s.l.	NEMA NOM.EFF. 91.7%		PF 0.84				
ALTERNATE RATING:							
<p>INTERCHANGE ANY TWO LINE WIRES TO REVERSE THE ROTATION</p> <p>For safe area-Inverter duty motor For use on VPWM 1000:1 VT, 4:1 CT</p>							
DE: 6208-ZZ		ODE: 6206-ZZ		MOBIL POLYREX EM			
<p>WARNING: Motor must be grounded in accordance with local and national electrical codes to prevent serious electrical shocks. Disconnect power source before servicing unit.</p> <p>AVERTISSEMENT: Le moteur doit être mis à la terre conformément aux codes électriques locaux et nationaux afin d'éviter tout choc électrique grave. Déconnectez l'alimentation avant l'entretien de la machine.</p>							

Rev	Description	Date	Approved
-	INITIAL RELEASE, ECO# 2450	10/2/19	SSH

DATA SHEET

Three Phase Induction Motor - Squirrel Cage



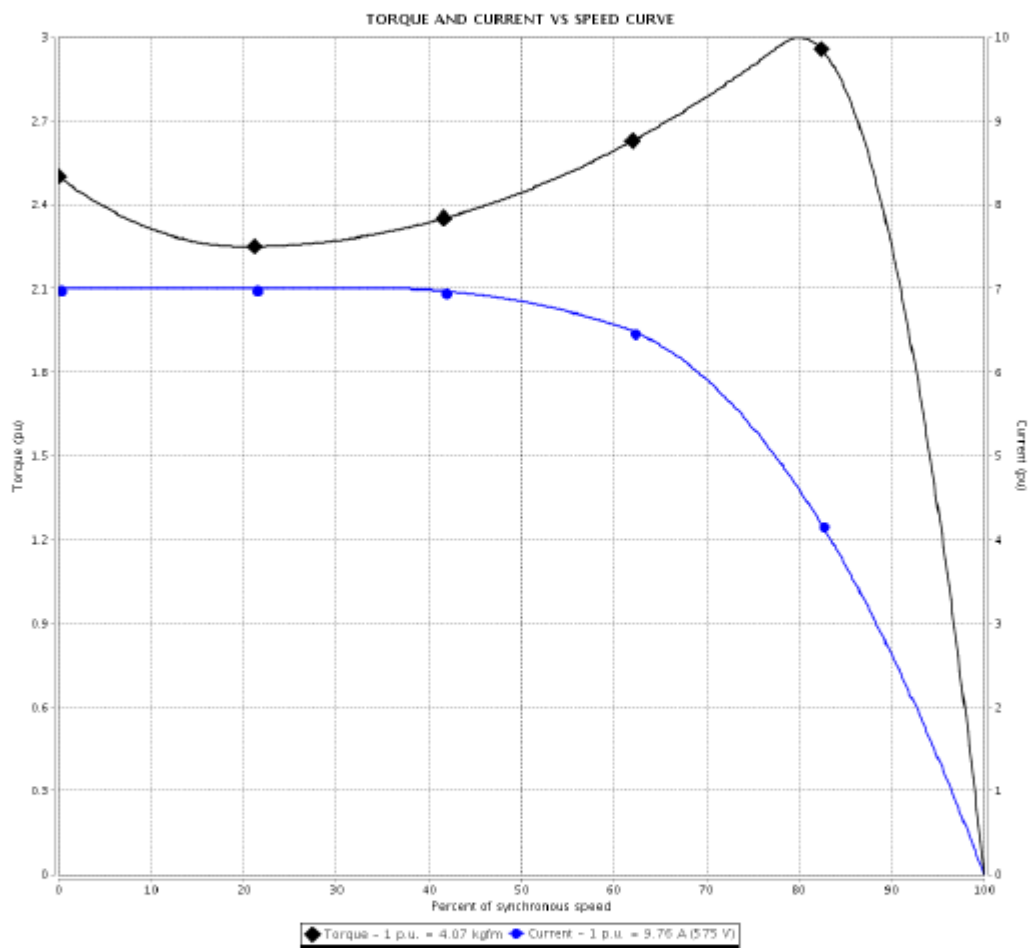
Customer :						
Product line		: Rolled Steel NEMA Premium Efficiency Three-Phase		Product code :	12675407	
				Catalog # :	01018ET3H215T-S	
Frame	:	: 213/5T		Locked rotor time	: 27s (cold) 15s (hot)	
Output	:	: 10 HP (7.5 kW)		Temperature rise	: 80 K	
Poles	:	: 4		Duty cycle	: Cont.(S1)	
Frequency	:	: 60 Hz		Ambient temperature	: -20°C to +40°C	
Rated voltage	:	: 575 V		Altitude	: 1000 m.a.s.l.	
Rated current	:	: 9.76 A		Protection degree	: IP55	
L. R. Amperes	:	: 68.3 A		Cooling method	: IC411 - TEFC	
LRC	:	: 7.0x(Code H)		Mounting	: F-1	
No load current	:	: 4.43 A		Rotation ¹	: Both (CW and CCW)	
Rated speed	:	: 1780 rpm		Noise level ²	: 80.0 dB(A)	
Slip	:	: 2.22 %		Starting method	: Direct On Line	
Rated torque	:	: 4.07 kgfm		Approx. weight ³	: 57.3 kg	
Locked rotor torque	:	: 250 %				
Breakdown torque	:	: 300 %				
Insulation class	:	: F				
Service factor	:	: 1.15				
Moment of inertia (J)	:	: 0.0451 kgm ²				
Design	:	: B				
Output	25%	50%	75%	100%	Foundation loads	
Efficiency (%)	90.2	91.0	91.0	91.7	Max. traction : 200 kgf	
Power Factor	0.41	0.67	0.78	0.84	Max. compression : 257 kgf	
Bearing type	:	<u>Drive end</u> 6208 ZZ		<u>Non drive end</u> 6208 ZZ		
Sealing	:	V'Ring		V'Ring		
Lubrication interval	:	-		-		
Lubricant amount	:	-		-		
Lubricant type	:	Mobil Polyrex EM				
Notes						
This revision replaces and cancel the previous one, which must be eliminated.						
(1) Looking the motor from the shaft end.						
(2) Measured at 1m and with tolerance of +3dB(A).						
(3) Approximate weight subject to changes after manufacturing process.						
(4) At 100% of full load.						
These are average values based on tests with sinusoidal power supply, subject to the tolerances stipulated in NEMA MG-1.						
Rev.	Changes Summary			Performed	Checked	Date
Performed by						
Checked by					Page	Revision
Date	02/10/2019				1 / 6	

TORQUE AND CURRENT VS SPEED CURVE



Three Phase Induction Motor - Squirrel Cage

Customer	:	
Product line	: Rolled Steel NEMA Premium Efficiency Three-Phase	Product code : 12875407
		Catalog # : 01018ET3H215T-S



Performance	: 575 V 60 Hz 4P		
Rated current	: 9.76 A	Moment of inertia (J)	: 0.0451 kgm ²
LRC	: 7.0	Duty cycle	: Cont.(S1)
Rated torque	: 4.07 kgfm	Insulation class	: F
Locked rotor torque	: 250 %	Service factor	: 1.15
Breakdown torque	: 300 %	Temperature rise	: 80 K
Rated speed	: 1760 rpm	Design	: B

Locked rotor time : 27s (cold) 15s (hot)

Rev.	Changes Summary	Performed	Checked	Date
Performed by			Page	Revision
Checked by			2 / 6	
Date	02/10/2019			

This document is exclusive property of WEG S/A. Reprinting is not allowed without written authorization of WEG S/A. Subject to change without notice

LOAD PERFORMANCE CURVE

Three Phase Induction Motor - Squirrel Cage

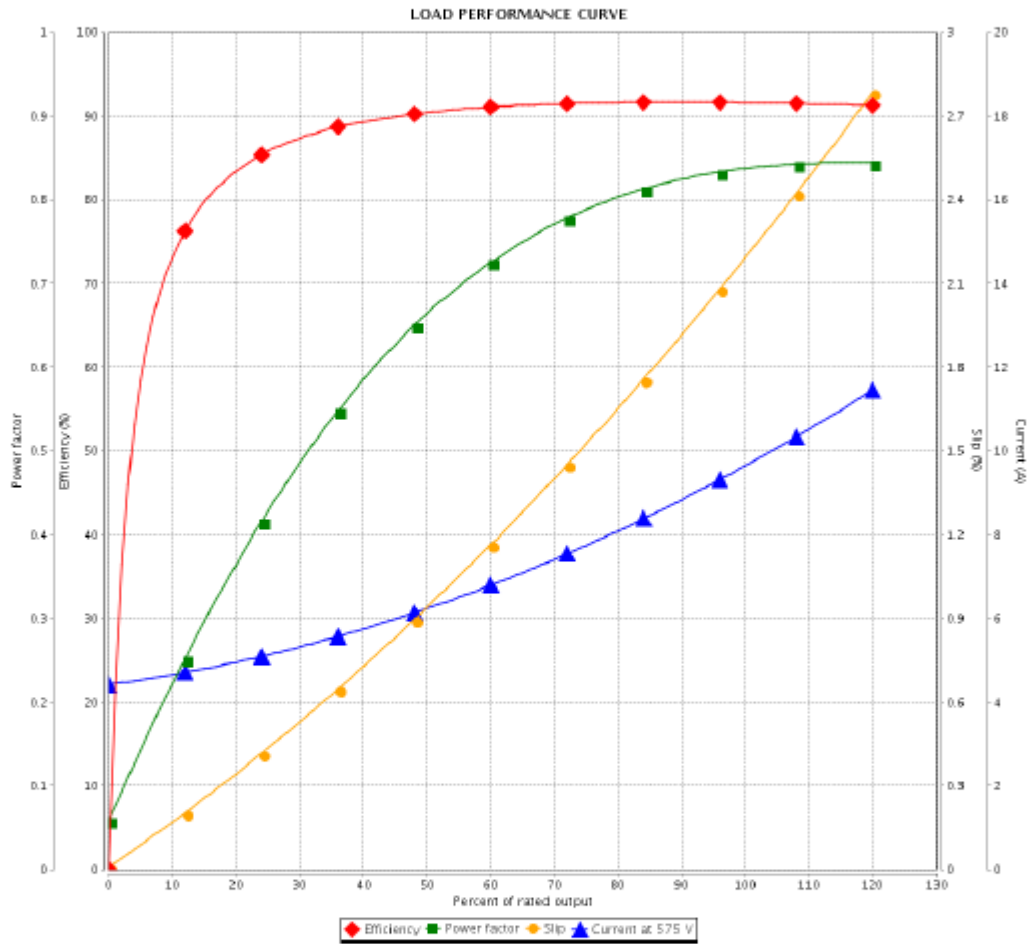


Customer :

Product line : Rolled Steel NEMA Premium
Efficiency Three-Phase

Product code : 12675407

Catalog # : 01018ET3H215T-S



Performance : 575 V 60 Hz 4P

Rated current : 9.76 A
LRC : 7.0
Rated torque : 4.07 kgfm
Locked rotor torque : 250 %
Breakdown torque : 300 %
Rated speed : 1760 rpm

Moment of inertia (J) : 0.0451 kgm²
Duty cycle : Cont.(S1)
Insulation class : F
Service factor : 1.15
Temperature rise : 80 K
Design : B

Rev.	Changes Summary	Performed	Checked	Date
Performed by			Page	Revision
Checked by			3 / 6	
Date	02/10/2019			

This document is exclusive property of WEG S/A. Reprinting is not allowed without written authorization of WEG S/A. Subject to change without notice

THERMAL LIMIT CURVE

Three Phase Induction Motor - Squirrel Cage



Customer : _____

Product line : Rolled Steel NEMA Premium Efficiency Three-Phase
 Product code : 12675407
 Catalog # : 01018ET3H215T-S



Performance : 575 V 60 Hz 4P

Rated current	: 9.76 A	Moment of inertia (J)	: 0.0451 kgm ²
LRC	: 7.0	Duty cycle	: Cont.(S1)
Rated torque	: 4.07 kgfm	Insulation class	: F
Locked rotor torque	: 250 %	Service factor	: 1.15
Breakdown torque	: 300 %	Temperature rise	: 80 K
Rated speed	: 1760 rpm	Design	: B

Heating constant _____
 Cooling constant _____

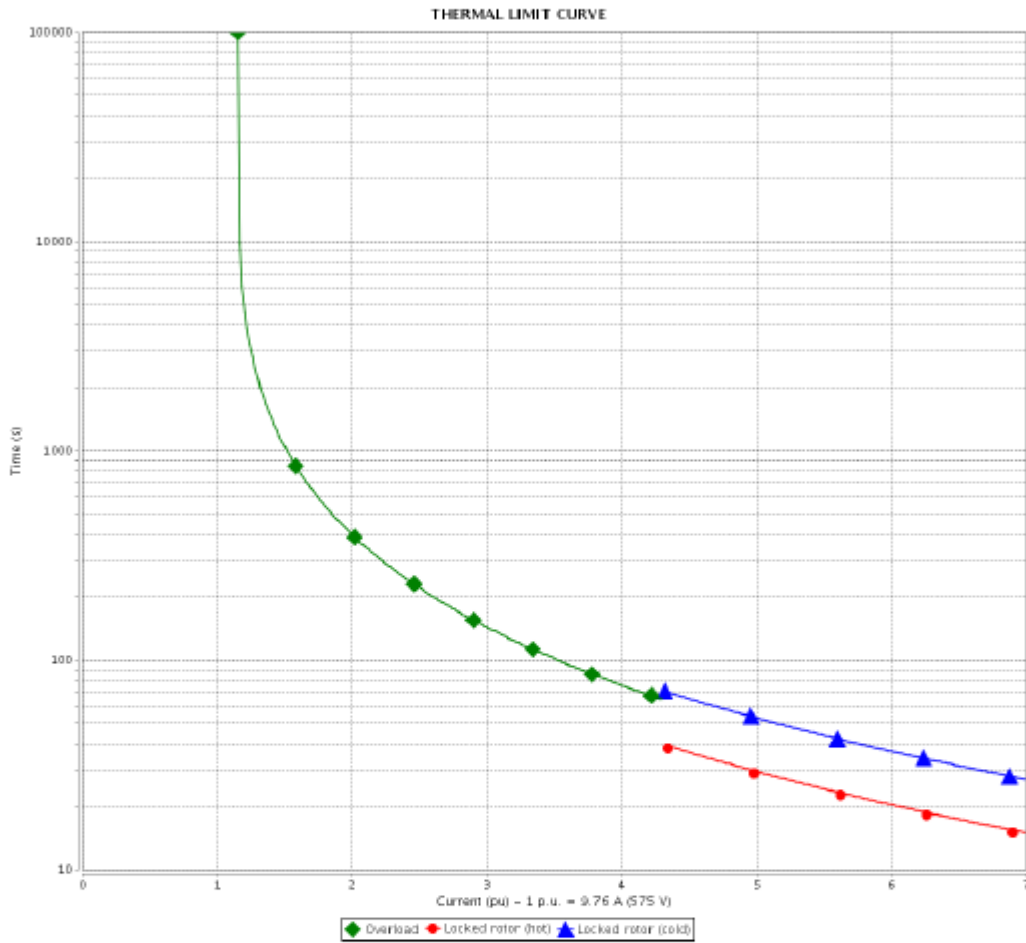
Rev.	Changes Summary	Performed	Checked	Date
Performed by			Page	Revision
Checked by			4 / 6	
Date	02/10/2019			

THERMAL LIMIT CURVE

Three Phase Induction Motor - Squirrel Cage



Customer : _____



Rev.	Changes Summary	Performed	Checked	Date
Performed by		Page		Revision
Checked by		5 / 6		
Date		02/10/2019		

This document is exclusive property of WEG S/A. Reprinting is not allowed without written authorization of WEG S/A.
Subject to change without notice

VFD OPERATION CURVE

Three Phase Induction Motor - Squirrel Cage

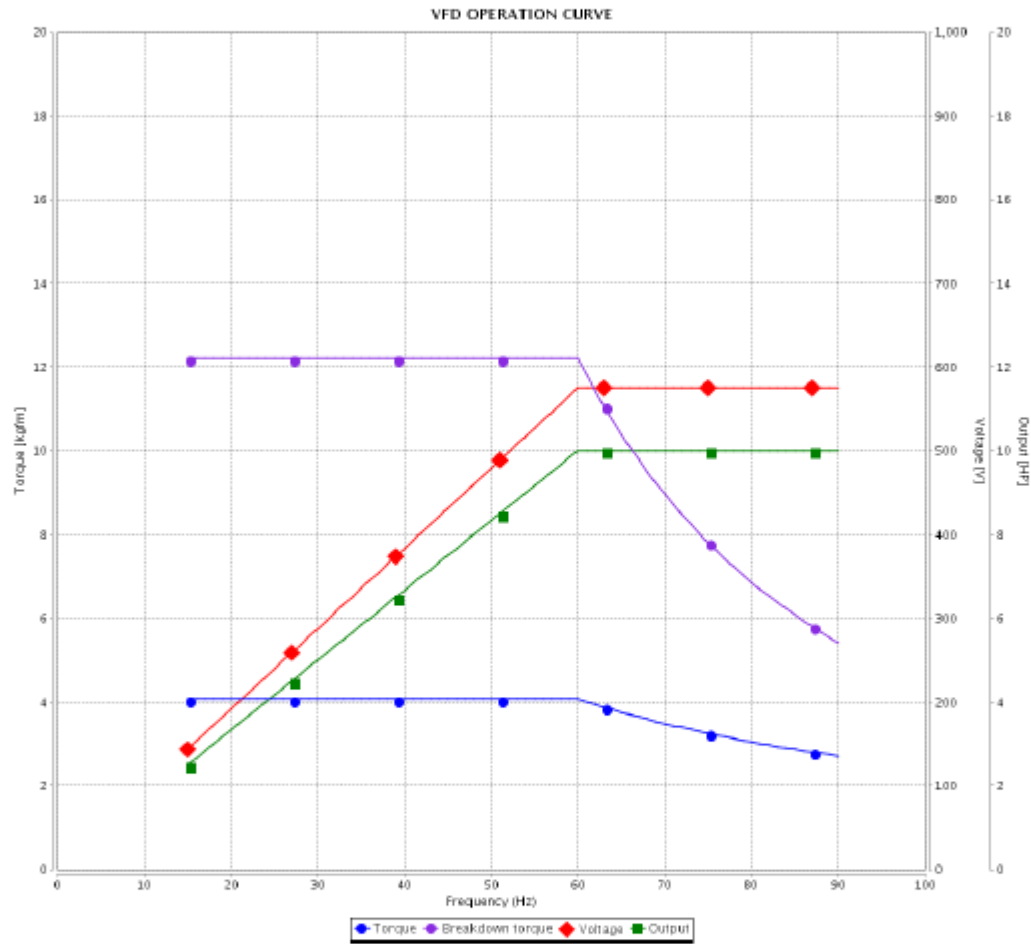


Customer : _____

Product line : Rolled Steel NEMA Premium
Efficiency Three-Phase

Product code : 12675407

Catalog # : 01018ET3H215T-S



Performance : 575 V 60 Hz 4P

Rated current : 9.76 A
LRC : 7.0
Rated torque : 4.07 kgfm
Locked rotor torque : 250 %
Breakdown torque : 300 %
Rated speed : 1760 rpm

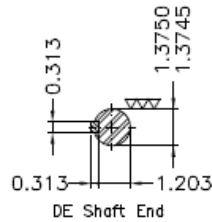
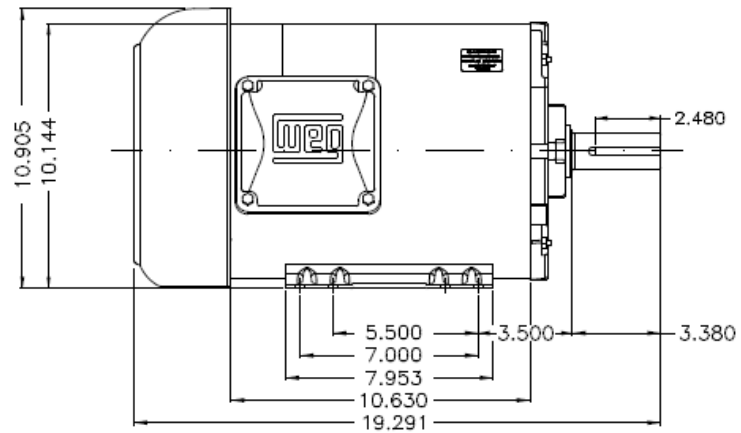
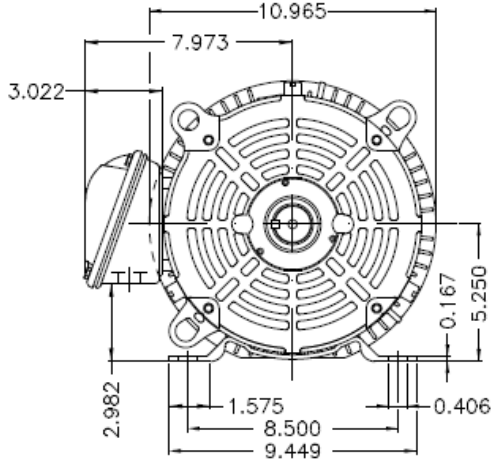
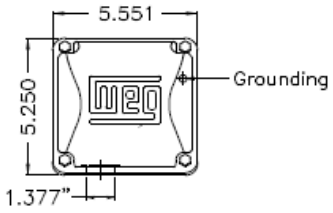
Moment of inertia (J) : 0.0451 kgm²
Duty cycle : Cont.(S1)
Insulation class : F
Service factor : 1.15
Temperature rise : 80 K
Design : B

Rev.	Changes Summary	Performed	Checked	Date
Performed by			Page	Revision
Checked by				
Date				

This document is exclusive property of WEG S/A. Reprinting is not allowed without written authorization of WEG S/A.
Subject to change without notice

Dimensões em polegada
Dimensions in inches

THIS IS AN UPDATED REVISION, THE
PREVIOUS ONE MUST BE DISREGARDED.



Color Munsell N 1 matte black									
Painting plan 207N									
Mounting F-1/B3R(D)									
ECM	LOC	SUMMARY OF MODIFICATIONS			EXECUTED	CHECKED	RELEASED	DATE	VER
EXECUTED	USERADMIN	THREE P, MOTOR CLOS ROLLED STEEL NEMA PREM							
CHECKED		FRAME 2135T P55 TEFC							
RELEASED		WEG code: 12875407							
REL DT	02.10.2019	WVO	Jaraguá do Sul	Product Engineering	SHEET	1	/	1	

10 HP 04 Poles 60Hz





NEMA
Premium

UL 3PT9
C US LISTED
FOR SAFE AREA

SA®
C US
Energy Verified

MADE IN MÉXICO

MAT: 12675407 CC029A

W01.TE0IC0X0N

HT010504NPW01

05SET2019 S/N:

For 60Hz: Class I, Zone 2, IIC

Class I, Div.2, Gr. A,B,C,D - T3

Div 2 Inverter Duty (SF1.00)

CT 2:1/VT 1000:1

PH 3 | FR 213/5T | HP(kW) 10(7.5) | Hz 60

V 575 | RPM 1760

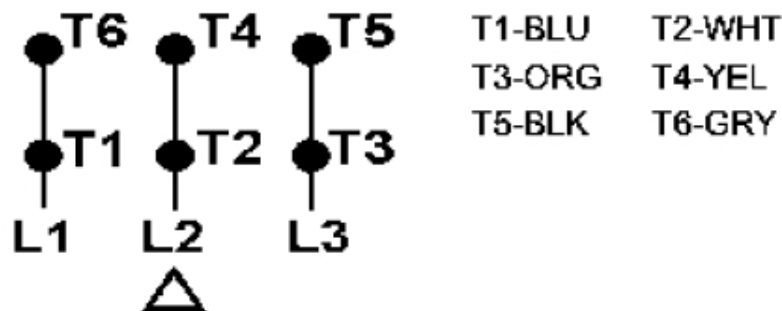
A 9.76 | DUTY CONT.

SFA 11.2 | CODE H | DES B | IP55

SF 1.15 | INS CL F ΔT 80K | AMB 40°C | ENCL TEFC

ALT 1000 m.a.s.l. | NEMA NOM.EFF. 91.7% | PF 0.84

ALTERNATE RATING:



INTERCHANGE ANY TWO LINE WIRES TO REVERSE THE ROTATION

For safe area-Inverter duty motor For use on VPWM 1000:1 VT, 4:1 CT

DE: 6208-ZZ | ODE: 6206-ZZ | MOBIL POLYREX EM

WARNING: Motor must be grounded in accordance with local and national electrical codes to prevent serious electrical shocks. Disconnect power source before servicing unit.

AVERTISSEMENT: Le moteur doit être mis à la terre conformément aux codes électriques locaux et nationaux afin d'éviter tout choc électrique grave. Déconnectez l'alimentation avant l'entretien de la machine.

