




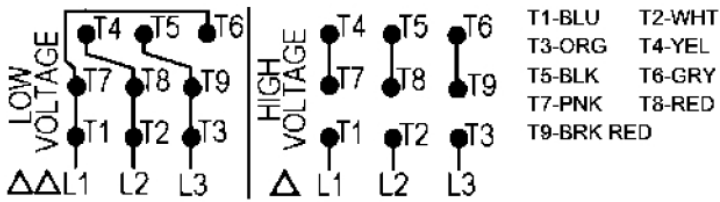

MK Diamond Products, Inc.
 1315 Storm Parkway
 Torrance, CA 90509-2803

SPECIFICATION SHEET

Date
7/11/19

MK Part Number 172777	MK Description MTR, 10HP 230/460V 3PH 1725RPM WEG	Revision -
Manufacturer/Supplier P/N 01018ET3E215T-S	Manufacturer/Vendor Description Rolled Steel NEMA Premium Efficiency 10 HP 4P 213/5T 3Ph 208-230/460//190-220/380-415 V 60 Hz IC411 - TEFC - Foot-mounted	
Manufacturer Information WEG INDUSTRIES JARAGUA DO SUL, BRAZIL	Supplier Information HILL HOUSE PRODUCTS SAN CLEMENTE, CA	Alternate Manufacturer

Specifications:

	NEMA Premium		3PT9 US LISTED FOR SAFE AREA		Energy Verified
MADE IN MEXICO					
MAT:12630848 CC029A		For 60Hz: Class I, Zone 2, IIC			
W01.TE0IC0X0N		Class I, Div.2, Gr. A,B,C,D - T3			
MODEL 01018ET3E215T-S		Div 2 Inverter Duty (SF1.00)			
16JUL2019 S/N:		CT 2:1/VT 1000:1			
PH 3	FR	213/5T	HP(kW)	10(7.5)	Hz 60
V 230/460			RPM 1760		
A 24.4/12.2			DUTY CONT.		
SFA 28.1/14.0			CODE H	DES B	IP55
SF 1.15		INS CL F	ΔT 80K	AMB 40°C	ENCL TEFC
PF 0.84		NEMA NOM.EFF. 91.7%			
ALT 1000 m.a.s.l.		USABLE @ 208V 27.0A SF1.00			
ALTERNATE RATING: 7.5HP 50Hz 190-220/380-415V SF1.15					
22.4-20.6/11.2-10.9A 1465RPM EFF 90.1% (IE3) IEC 60034-1					
					
INTERCHANGE ANY TWO LINE WIRES TO REVERSE THE ROTATION					
For safe area-Inverter duty motor For 60Hz use on VPWM 1000:1 VT, 4:1 CT					
DE: 6208-ZZ		ODE: 6206-ZZ		MOBIL POLYREX EM	
<p>WARNING: Motor must be grounded in accordance with local and national electrical codes to prevent serious electrical shocks. Disconnect power source before servicing unit.</p> <p>AVERTISSEMENT: Le moteur doit être mis à la terre conformément aux codes électriques locaux et nationaux afin d'éviter tout choc électrique grave. Déconnectez l'alimentation avant l'entretien de la machine.</p>					
					



Rev	Description	Date	Approved
-	INITIAL RELEASE, ECO# 2450	7/11/19	SSH

DATA SHEET



Three Phase Induction Motor - Squirrel Cage

Customer :					
Product line : Rolled Steel NEMA Premium Efficiency Three-Phase		Product code : 12630848			
		Catalog # : 01018ET3E215T-S			
Frame	: 213/5T	Locked rotor time	: 27s (cold) 15s (hot)		
Output	: 10 HP (7.5 kW)	Temperature rise	: 80 K		
Poles	: 4	Duty cycle	: Cont.(S1)		
Frequency	: 60 Hz	Ambient temperature	: -20°C to +40°C		
Rated voltage	: 208-230/480 V	Altitude	: 1000 m.a.s.l.		
Rated current	: 27.0-24.4/12.2 A	Protection degree	: IP55		
L. R. Amperes	: 189-171/85.4 A	Cooling method	: IC411 - TEFC		
LRC	: 7.0x(Code H)	Mounting	: F-1		
No load current	: 9.56-11.1/5.54 A	Rotation ¹	: Both (CW and CCW)		
Rated speed	: 1760 rpm	Noise level ²	: 60.0 dB(A)		
Slip	: 2.22 %	Starting method	: Direct On Line		
Rated torque	: 4.07 kgfm	Approx. weight ³	: 57.6 kg		
Locked rotor torque	: 250 %				
Breakdown torque	: 300 %				
Insulation class	: F				
Service factor	: 1.15				
Moment of inertia (J)	: 0.0451 kgm ²				
Design	: B				
Output	50%	75%	100%	Foundation loads	
Efficiency (%)	91.0	91.0	91.7	Max. traction	: 238 kgf
Power Factor	0.87	0.78	0.84	Max. compression	: 296 kgf
Bearing type	:	<u>Drive end</u> 6208 ZZ	<u>Non drive end</u> 6208 ZZ		
Sealing	:	V ^o Ring	V ^o Ring		
Lubrication interval	:	-	-		
Lubricant amount	:	-	-		
Lubricant type	:	Mobil Polyrex EM			
Notes					
This revision replaces and cancel the previous one, which must be eliminated. (1) Looking the motor from the shaft end. (2) Measured at 1m and with tolerance of +3dB(A). (3) Approximate weight subject to changes after manufacturing process. (4) At 100% of full load.			These are average values based on tests with sinusoidal power supply, subject to the tolerances stipulated in NEMA MG-1.		
Rev.	Changes Summary		Performed	Checked	Date
Performed by					
Checked by				Page	Revision
Date	11/07/2019			1 / 6	

TORQUE AND CURRENT VS SPEED CURVE



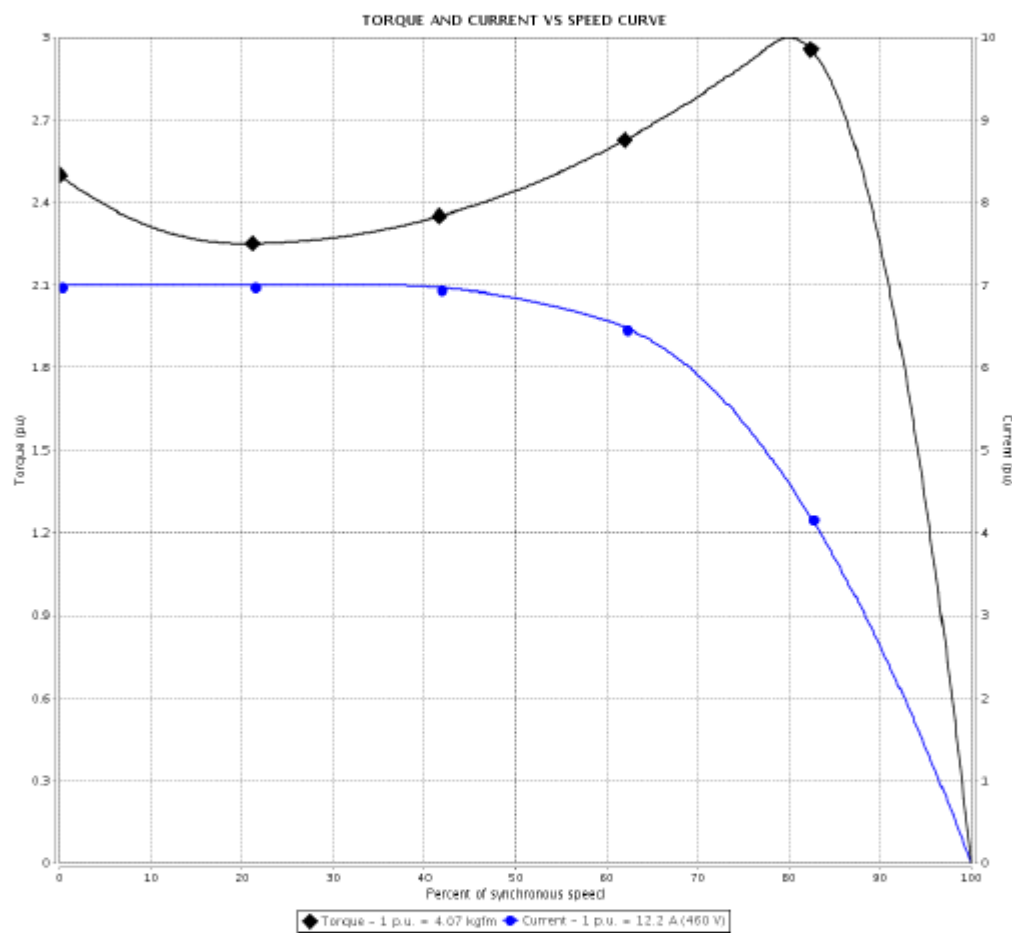
Three Phase Induction Motor - Squirrel Cage

Customer : _____

Product line : Rolled Steel NEMA Premium
Efficiency Three-Phase

Product code : 12630848

Catalog # : 01018ET3E215T-S



Performance : 208-230/460 V 60 Hz 4P

Rated current : 27.0-24.4/12.2 A
 LRC : 7.0
 Rated torque : 4.07 kgfm
 Locked rotor torque : 250 %
 Breakdown torque : 300 %
 Rated speed : 1760 rpm

Moment of inertia (J) : 0.0451 kgm²
 Duty cycle : Cont.(S1)
 Insulation class : F
 Service factor : 1.15
 Temperature rise : 80 K
 Design : B

Locked rotor time : 27s (cold) 15s (hot)

Rev.	Changes Summary	Performed	Checked	Date
Performed by			Page	Revision
Checked by			2 / 6	
Date	11/07/2019			

This document is exclusive property of WEG S/A. Reprinting is not allowed without written authorization of WEG S/A.
Subject to change without notice

LOAD PERFORMANCE CURVE



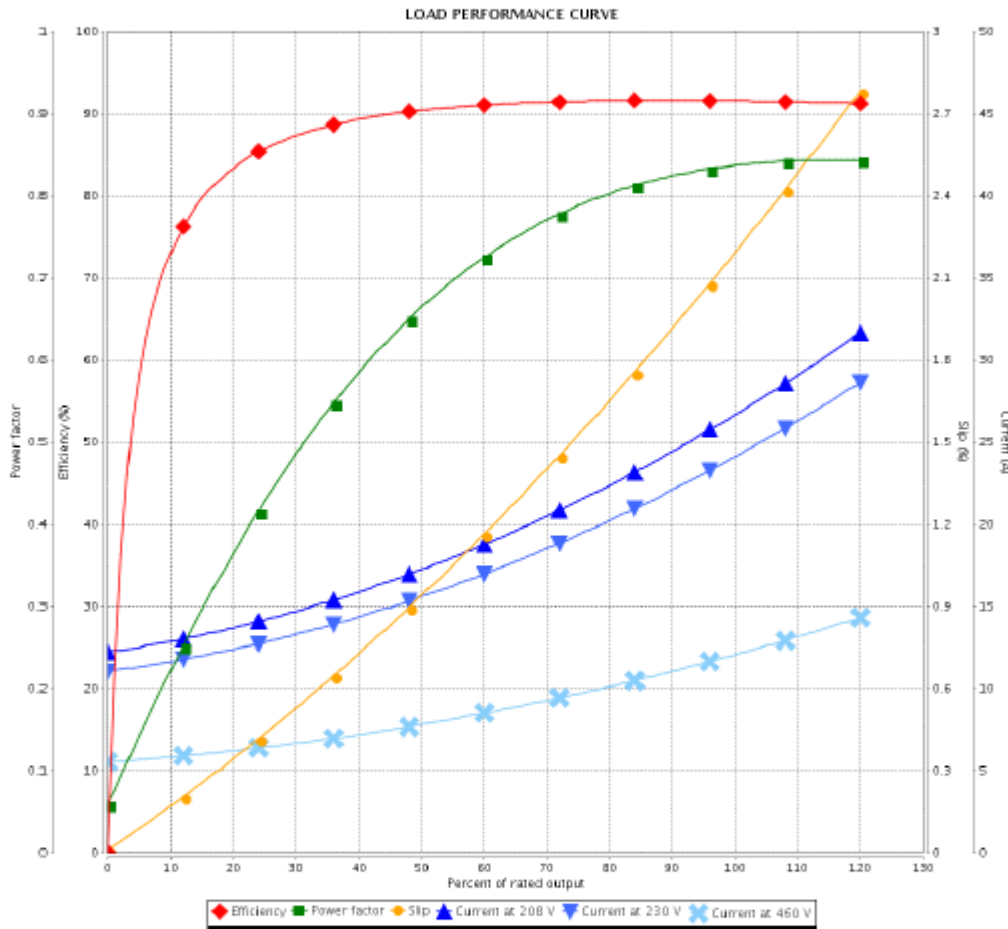
Three Phase Induction Motor - Squirrel Cage

Customer :

Product line : Rolled Steel NEMA Premium Efficiency Three-Phase

Product code : 12630848

Catalog # : 01018ET3E215T-S



Performance : 208-230/460 V 60 Hz 4P

Rated current : 27.0-24.4/12.2 A
 LRC : 7.0
 Rated torque : 4.07 kgfm
 Locked rotor torque : 250 %
 Breakdown torque : 300 %
 Rated speed : 1760 rpm

Moment of inertia (J) : 0.0451 kgm²
 Duty cycle : Cont.(S1)
 Insulation class : F
 Service factor : 1.15
 Temperature rise : 80 K
 Design : B

Rev.	Changes Summary	Performed	Checked	Date
Performed by			Page	Revision
Checked by			3 / 6	
Date	11/07/2019			

This document is exclusive property of WEG S/A. Reprinting is not allowed without written authorization of WEG S/A. Subject to change without notice

THERMAL LIMIT CURVE



Three Phase Induction Motor - Squirrel Cage

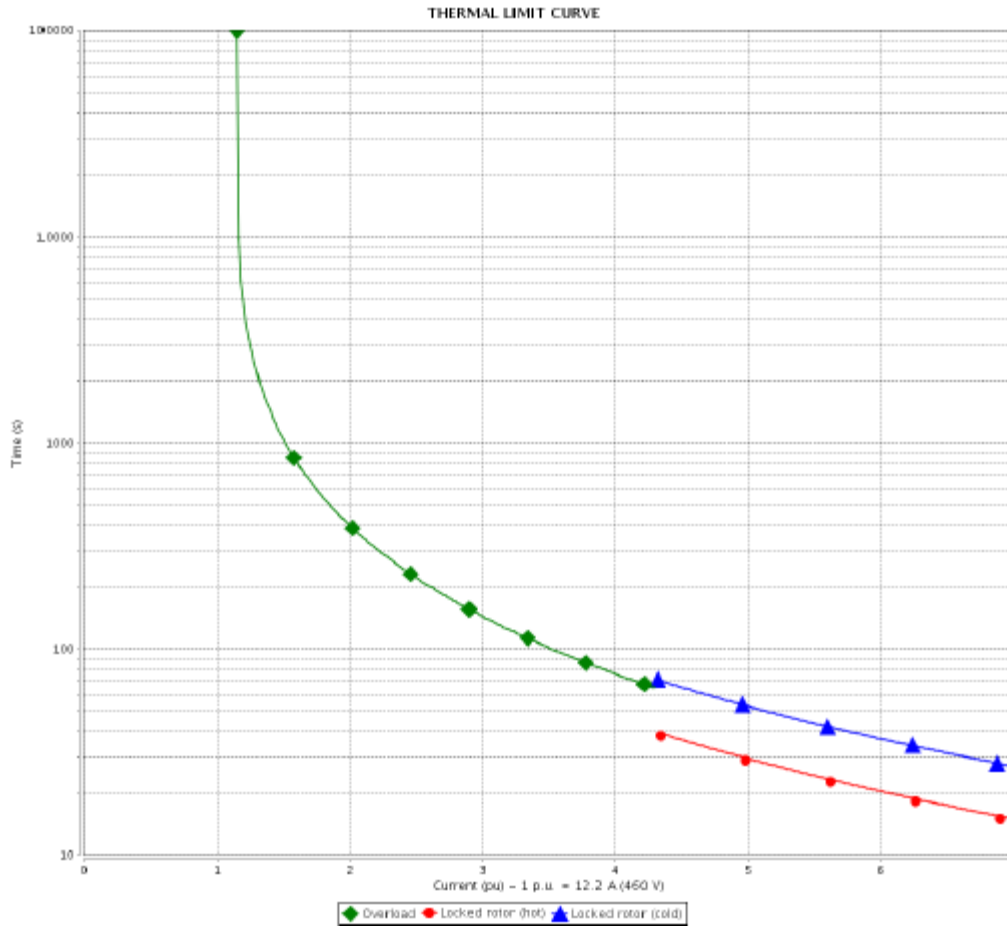
Customer : _____				
Product line : Rolled Steel NEMA Premium Efficiency Three-Phase		Product code : 12630848		
		Catalog # : 01018ET3E215T-S		
Performance : 208-230/460 V 60 Hz 4P				
Rated current : 27.0-24.4/12.2 A		Moment of inertia (J) : 0.0451 kgm ²		
LRC : 7.0		Duty cycle : Cont.(S1)		
Rated torque : 4.07 kgfm		Insulation class : F		
Locked rotor torque : 250 %		Service factor : 1.15		
Breakdown torque : 300 %		Temperature rise : 80 K		
Rated speed : 1760 rpm		Design : B		
Heating constant				
Cooling constant				
Rev.	Changes Summary	Performed	Checked	Date
Performed by		Page		Revision
Checked by		4 / 6		
Date	11/07/2019			

THERMAL LIMIT CURVE

Three Phase Induction Motor - Squirrel Cage



Customer : _____



Rev.	Changes Summary	Performed	Checked	Date
Performed by				
Checked by				
Date				
		Page 5 / 6	Revision	

This document is exclusive property of WEG S/A. Reprinting is not allowed without written authorization of WEG S/A.
Subject to change without notice

VFD OPERATION CURVE



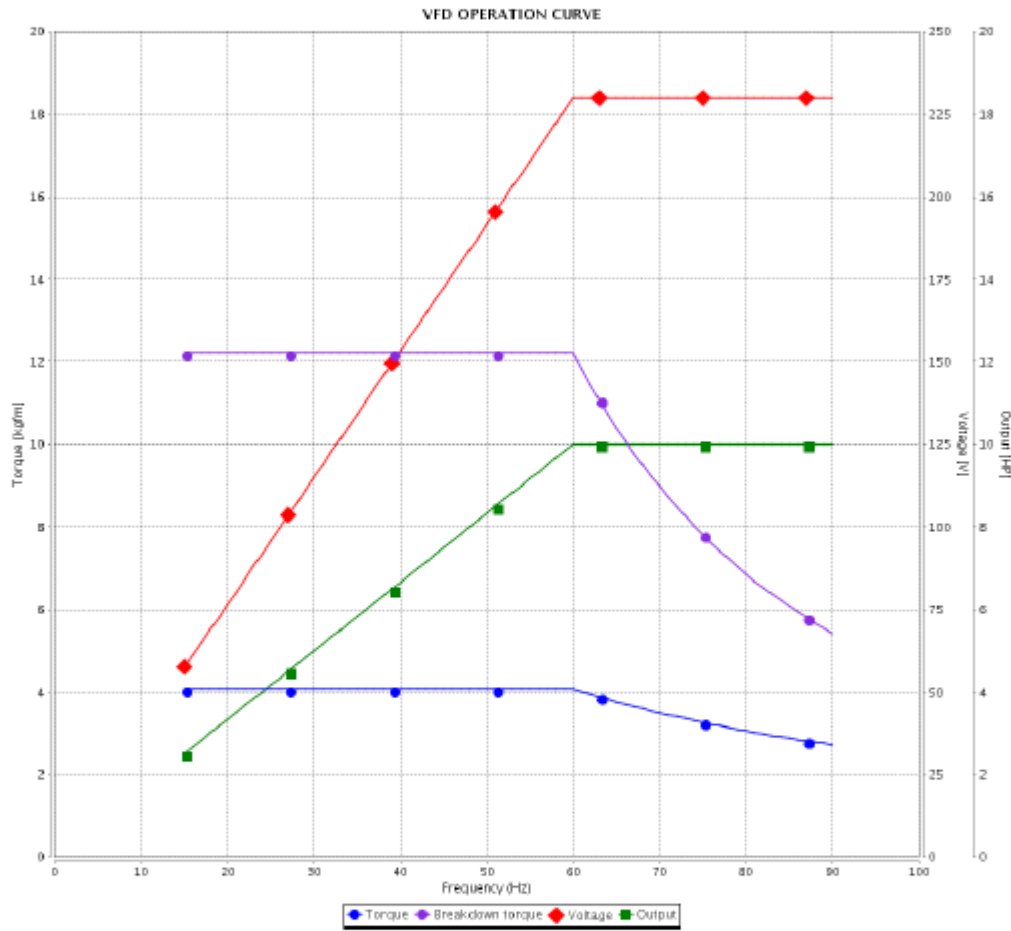
Three Phase Induction Motor - Squirrel Cage

Customer : _____

Product line : Rolled Steel NEMA Premium Efficiency Three-Phase

Product code : 12630848

Catalog # : 01018ET3E215T-S



Performance : 208-230/480 V 60 Hz 4P

Rated current : 27.0-24.4/12.2 A
 LRC : 7.0
 Rated torque : 4.07 kgfm
 Locked rotor torque : 250 %
 Breakdown torque : 300 %
 Rated speed : 1760 rpm

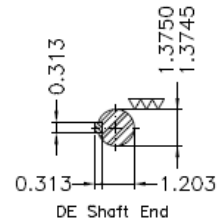
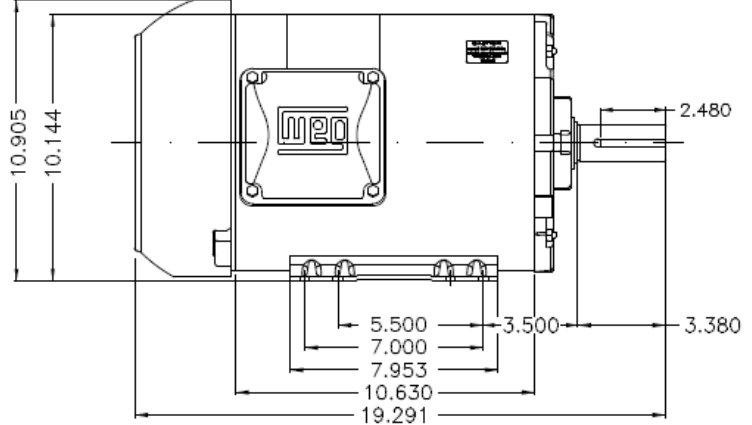
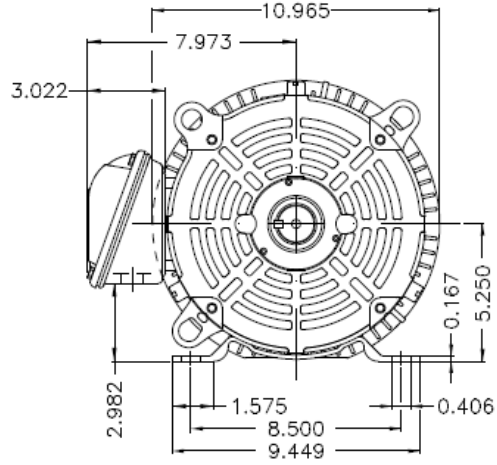
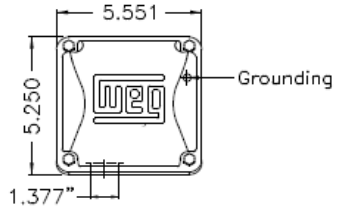
Moment of inertia (J) : 0.0451 kgm²
 Duty cycle : Cont.(S1)
 Insulation class : F
 Service factor : 1.15
 Temperature rise : 80 K
 Design : B

Rev.	Changes Summary	Performed	Checked	Date
Performed by			Page	Revision
Checked by				
Date				

This document is exclusive property of WEG S/A. Reprinting is not allowed without written authorization of WEG S/A. Subject to change without notice.

Dimensões em polegada
Dimensions in inches

THIS IS AN UPDATED REVISION, THE
PREVIOUS ONE MUST BE DISREGARDED.



Color Munsell N 1 matte black										
Painting plan 207N										
Mounting F-1/B3R(D)										
EOM	LOC	SUMMARY OF MODIFICATIONS				EXECUTED	CHECKED	RELEASED	DATE	VER
EXECUTED	USERADMIN	THREE P. MOTOR CLOS ROLLED STEEL NEMA PREM								
CHECKED		FRAME 213/ST IP55 TEFC								
RELEASED		WEG code: 12630848								
REL DT	11/07/2019	WMO	Jaraguá do Sul	Product Engineering	SHEET	1 / 1				

10 HP 04 Poles 60Hz



ZME A3



NEMA
Premium

UL 3PT9
US LISTED
FOR SAFE AREA

SP®
US
Energy Verified

MADE IN MÉXICO

MAT:12630848 CC029A

W01.TE0IC0X0N

MODEL 01018ET3E215T-S

16JUL2019 S/N:

For 60Hz: Class I, Zone 2, IIC

Class I, Div.2, Gr. A,B,C,D - T3

Div 2 Inverter Duty (SF1.00)

CT 2:1/VT 1000:1

PH 3 | FR 213/5T | HP(kW) 10(7.5) | Hz 60

V 230/460 | RPM 1760

A 24.4/12.2 | DUTY CONT.

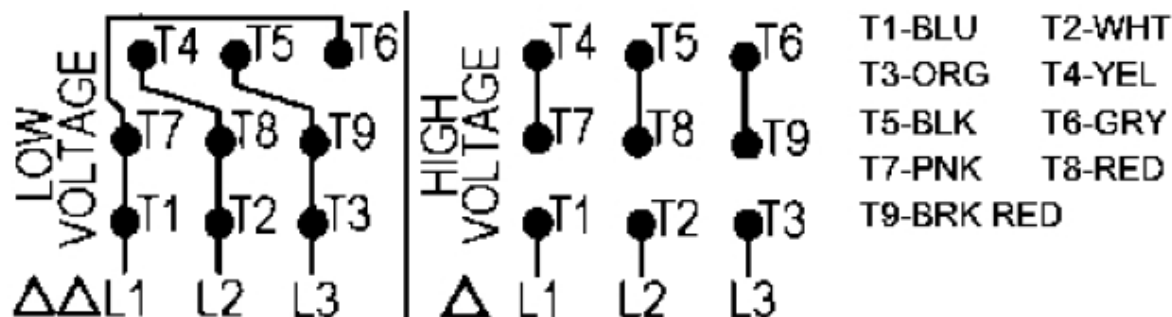
SFA 28.1/14.0 | CODE H | DES B | IP55

SF 1.15 | INS CL F ΔT 80K | AMB 40°C | ENCL TEFC

PF 0.84 | NEMA NOM.EFF. 91.7%

ALT 1000 m.a.s.l. | USABLE @ 208V 27.0A SF1.00

**ALTERNATE RATING: 7.5HP 50Hz 190-220/380-415V SF1.15
22.4-20.6/11.2-10.9A 1465RPM EFF 90.1% (IE3) IEC 60034-1**



INTERCHANGE ANY TWO LINE WIRES TO REVERSE THE ROTATION

For safe area-Inverter duty motor For 60Hz use on VPWM 1000:1 VT, 4:1 CT

DE: 6208-ZZ | ODE: 6206-ZZ | MOBIL POLYREX EM

WARNING: Motor must be grounded in accordance with local and national electrical codes to prevent serious electrical shocks. Disconnect power source before servicing unit.

AVERTISSEMENT: Le moteur doit être mis à la terre conformément aux codes électriques locaux et nationaux afin d'éviter tout choc électrique grave. Déconnectez l'alimentation avant l'entretien de la machine.

