

MK Diamond Products, Inc.
1315 Storm Parkway
Torrance, CA 90509-2803

SPECIFICATION SHEET		Date 9/4/19
MK Part Number 172775	MK Description MTR, 5HP 230/460V 3PH 1725RPM WEG	Revision -
Manufacturer/Supplier P/N 00518ET3E184T-S		Manufacturer/Vendor Description Rolled Steel NEMA Premium Efficiency 5 HP 4P 182/4T 3Ph 208-230/460/190-220/380-415 V 60 Hz IC411 - TEFC - Foot-mounted
Manufacturer Information WEG INDUSTRIES JARAGUA DO SUL, BRAZIL	Supplier Information HILL HOUSE PRODUCTS SAN CLEMENTE, CA	Alternates See Approved Alternates List

Specifications:

	NEMA Premium		3PT9 US LISTED FOR SAFE AREA		Energy Verified
MADE IN MEXICO		MAT: 12630776 CC029A		For 60Hz: Class I, Zone 2, IIC	
W01.TE0IC0X0N		MODEL 00518ET3E184T-S		Class I, Div.2, Gr. A,B,C,D - T3	
10SET2019 S/N:				Div 2 Inverter Duty (SF1.00)	
				CT 2:1/VT 1000:1	
PH 3	FR	182/4T	HP(kW) 5.0(3.7)	Hz	60
V 230/460			RPM 1750		
A 13.0/6.49			DUTY CONT.		
SFA 14.9/7.46			CODE J	DES B	IP55
SF 1.15		INS CL F	ΔT 80K	AMB 40°C	ENCL TEFC
PF 0.80		NEMA NOM.EFF. 89.5%			
ALT 1000 m.a.s.l.		USABLE @ 208V 14.4A SF1.00			
ALTERNATE RATING: 5.0HP 50Hz 190-220/380-415V SF1.00					
15.8-14.1/7.88-7.47A 1425RPM EFF 84.9% (IE1) IEC 60034-1					
INTERCHANGE ANY TWO LINE WIRES TO REVERSE THE ROTATION					
For safe area-Inverter duty motor For 60Hz use on VPWM 1000:1 VT, 4:1 CT					
DE: 6206-ZZ		ODE: 6205-ZZ		MOBIL POLYREX EM	
<p>WARNING: Motor must be grounded in accordance with local and national electrical codes to prevent serious electrical shocks. Disconnect power source before servicing unit.</p> <p>AVERTISSEMENT: Le moteur doit être mis à la terre conformément aux codes électriques locaux et nationaux afin d'éviter tout choc électrique grave. Déconnectez l'alimentation avant l'entretien de la machine.</p>					

APPROVED ALTERNATES

WEG SPEC # 00518ET3E184T-W22 (CAST IRON MOTOR) SEE PAGES 8-9.

Rev	Description	Date	Approved
-	INITIAL RELEASE, ECO# 2450	9/4/19	SSH

DATA SHEET

Three Phase Induction Motor - Squirrel Cage



Customer : _____

Product line : Rolled Steel NEMA Premium Efficiency Three-Phase Product code : 12630776
 Catalog # : 00518ET3E184T-S

Frame	: 182/4T	Locked rotor time	: 28s (cold) 16s (hot)
Output	: 5 HP (3.7 kW)	Temperature rise	: 80 K
Poles	: 4	Duty cycle	: Cont.(S1)
Frequency	: 60 Hz	Ambient temperature	: -20°C to +40°C
Rated voltage	: 208-230/460 V	Altitude	: 1000 m.a.s.l.
Rated current	: 14.4-13.0/6.49 A	Protection degree	: IP55
L. R. Amperes	: 100-90.9/45.4 A	Cooling method	: IC411 - TEFC
LRC	: 7.0x(Code J)	Mounting	: F-1
No load current	: 5.94-6.89/3.44 A	Rotation ¹	: Both (CW and CCW)
Rated speed	: 1750 rpm	Noise level ²	: 56.0 dB(A)
Slip	: 2.78 %	Starting method	: Direct On Line
Rated torque	: 2.05 kgfm	Approx. weight ³	: 33.8 kg
Locked rotor torque	: 220 %		
Breakdown torque	: 300 %		
Insulation class	: F		
Service factor	: 1.15		
Moment of inertia (J)	: 0.0130 kgm ²		
Design	: B		

Output	25%	50%	75%	100%	Foundation loads	
Efficiency (%)	88.2	88.5	89.5	89.5	Max. traction	: 136 kgf
Power Factor	0.35	0.60	0.73	0.80	Max. compression	: 170 kgf

		<u>Drive end</u>	<u>Non drive end</u>
Bearing type	:	6206 ZZ	6205 ZZ
Sealing	:	V'Ring	V'Ring
Lubrication interval	:	-	-
Lubricant amount	:	-	-
Lubricant type	:	Mobil Polyrex EM	

Notes

This revision replaces and cancel the previous one, which must be eliminated.
 (1) Looking the motor from the shaft end.
 (2) Measured at 1m and with tolerance of +3dB(A).
 (3) Approximate weight subject to changes after manufacturing process.
 (4) At 100% of full load.

These are average values based on tests with sinusoidal power supply, subject to the tolerances stipulated in NEMA MG-1.

Rev.	Changes Summary	Performed	Checked	Date
Performed by		Page		Revision
Checked by		1 / 5		
Date	04/09/2019			

TORQUE AND CURRENT VS SPEED CURVE

Three Phase Induction Motor - Squirrel Cage

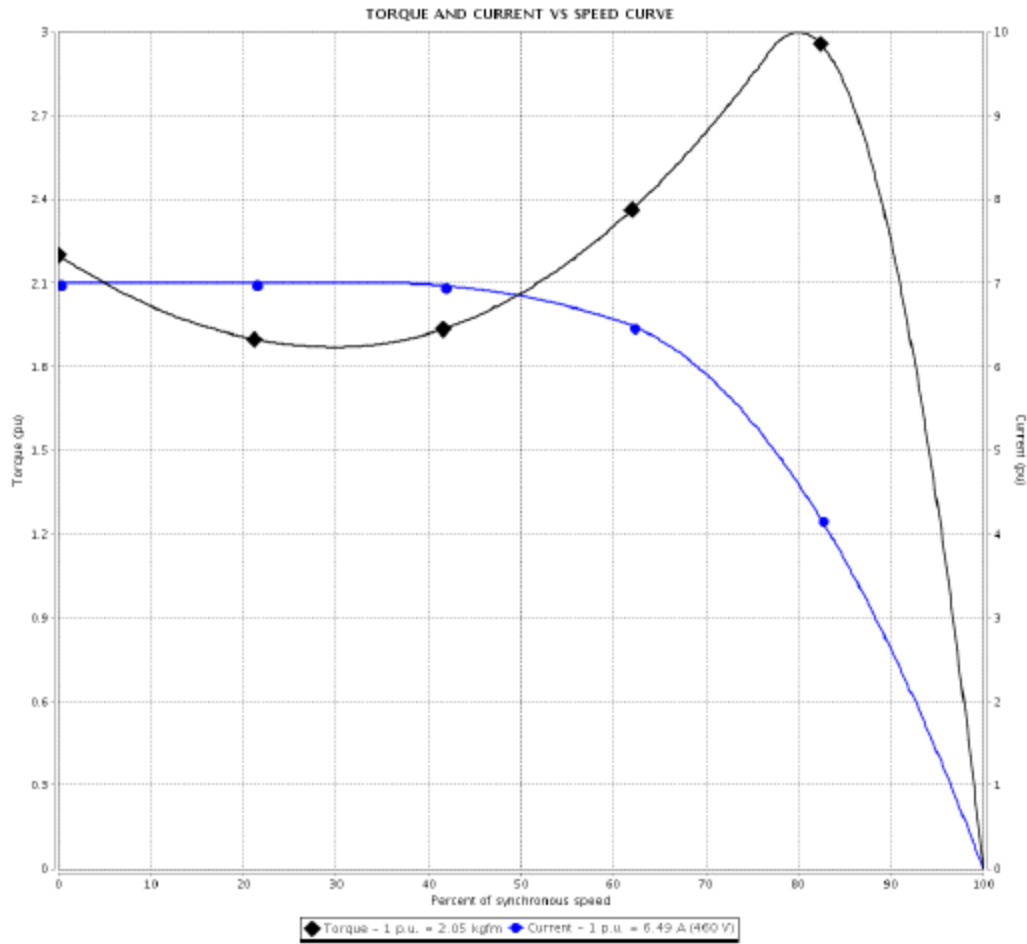


Customer : _____

Product line : Rolled Steel NEMA Premium Efficiency Three-Phase

Product code : 12630776

Catalog # : 00518ET3E184T-S



Performance : 208-230/460 V 60 Hz 4P

Rated current	: 14.4-13.0/6.49 A	Moment of inertia (J)	: 0.0130 kgm ²
LRC	: 7.0	Duty cycle	: Cont.(S1)
Rated torque	: 2.05 kgfm	Insulation class	: F
Locked rotor torque	: 220 %	Service factor	: 1.15
Breakdown torque	: 300 %	Temperature rise	: 80 K
Rated speed	: 1750 rpm	Design	: B

Locked rotor time : 28s (cold) 16s (hot)

Rev.	Changes Summary	Performed	Checked	Date
Performed by			Page	Revision
Checked by			2 / 5	
Date	04/09/2019			

This document is exclusive property of WEG S/A. Reprinting is not allowed without written authorization of WEG S/A. Subject to change without notice

LOAD PERFORMANCE CURVE

Three Phase Induction Motor - Squirrel Cage

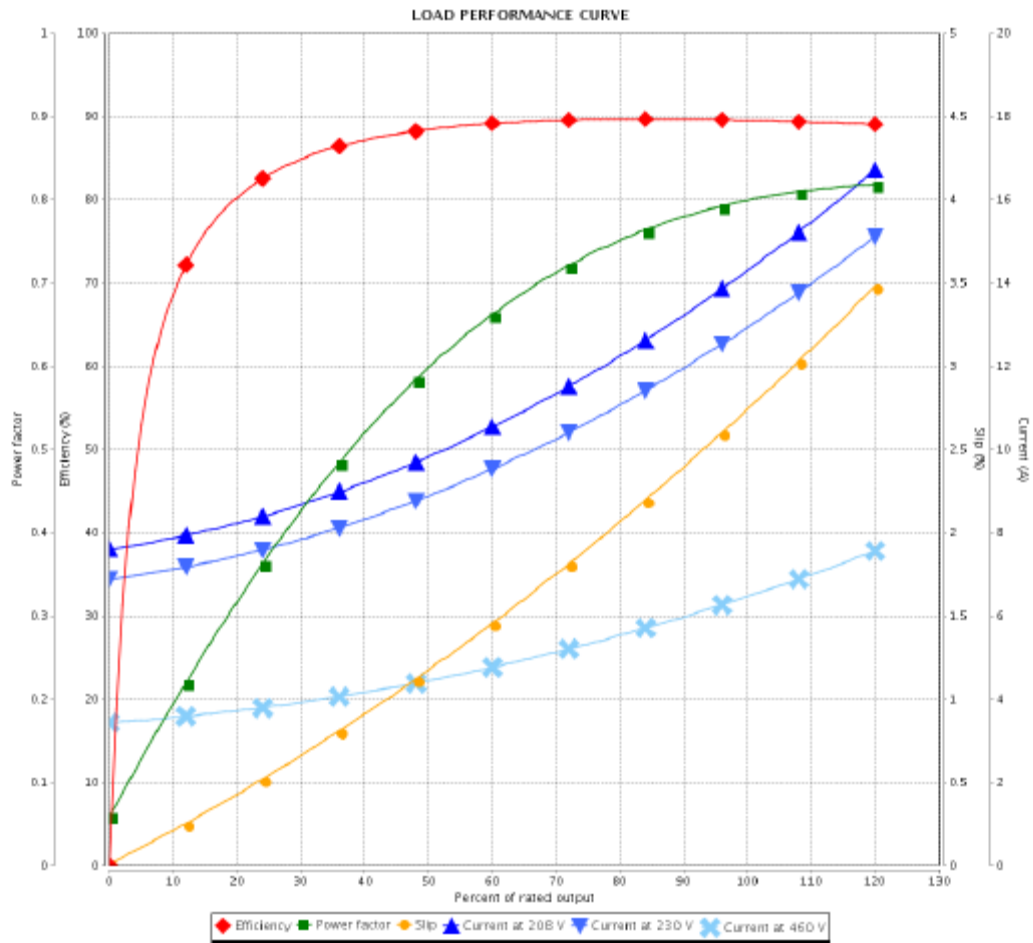


Customer : _____

Product line : Rolled Steel NEMA Premium
Efficiency Three-Phase

Product code : 12630778

Catalog # : 00518ET3E184T-S



Performance : 208-230/460 V 60 Hz 4P

Rated current : 14.4-13.0/6.49 A
LRC : 7.0
Rated torque : 2.05 kgfm
Locked rotor torque : 220 %
Breakdown torque : 300 %
Rated speed : 1750 rpm

Moment of inertia (J) : 0.0130 kgm²
Duty cycle : Cont.(S1)
Insulation class : F
Service factor : 1.15
Temperature rise : 80 K
Design : B

Rev.	Changes Summary	Performed	Checked	Date
Performed by			Page 3 / 5	Revision
Checked by				
Date 04/09/2019				

This document is exclusive property of WEG S/A. Reprinting is not allowed without written authorization of WEG S/A.
Subject to change without notice

THERMAL LIMIT CURVE

Three Phase Induction Motor - Squirrel Cage



Customer : _____

Product line : Rolled Steel NEMA Premium Efficiency Three-Phase Product code : 12630778
 Catalog # : 00518ET3E184T-S



Performance : 208-230/460 V 60 Hz 4P

Rated current : 14.4-13.0/6.49 A	Moment of inertia (J) : 0.0130 kgm ²
LRC : 7.0	Duty cycle : Cont.(S1)
Rated torque : 2.05 kgfm	Insulation class : F
Locked rotor torque : 220 %	Service factor : 1.15
Breakdown torque : 300 %	Temperature rise : 80 K
Rated speed : 1750 rpm	Design : B

Heating constant _____
 Cooling constant _____

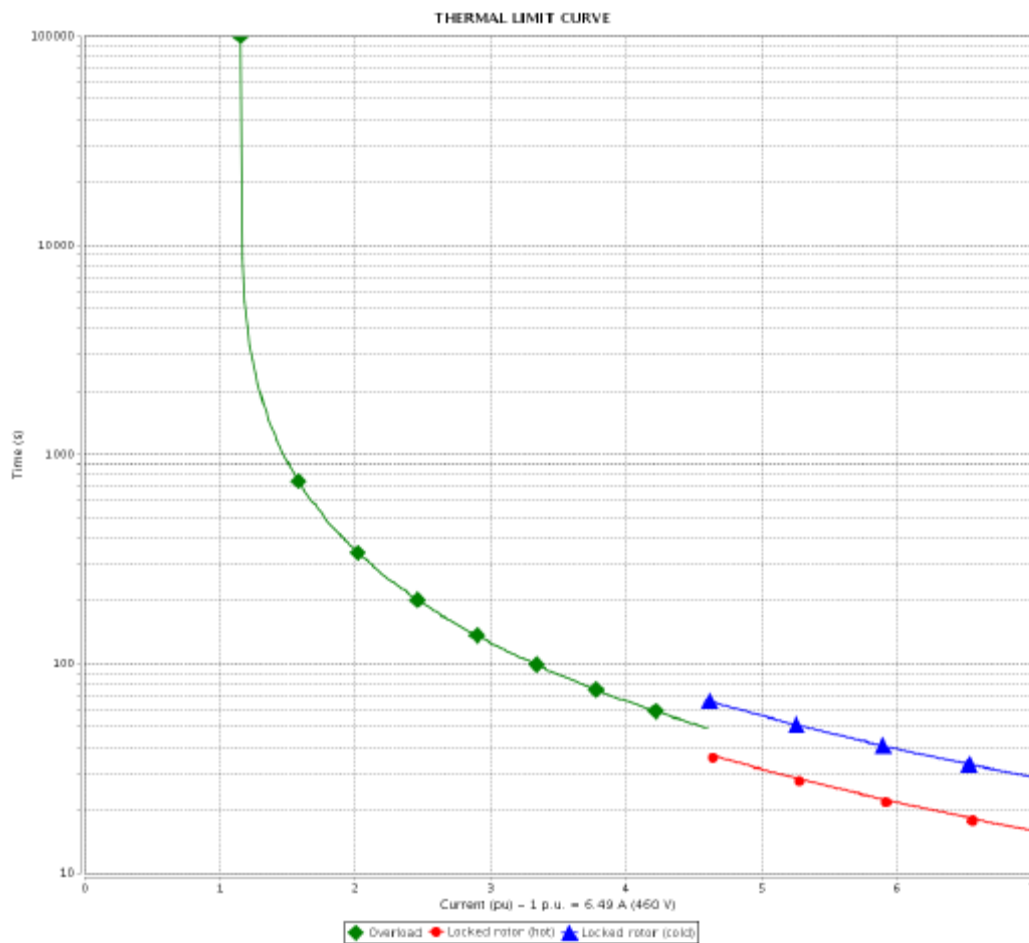
Rev.	Changes Summary	Performed	Checked	Date
Performed by			Page	Revision
Checked by				
Date				

THERMAL LIMIT CURVE

Three Phase Induction Motor - Squirrel Cage



Customer : _____

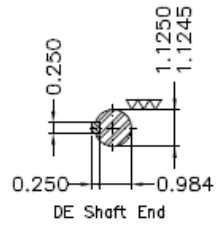
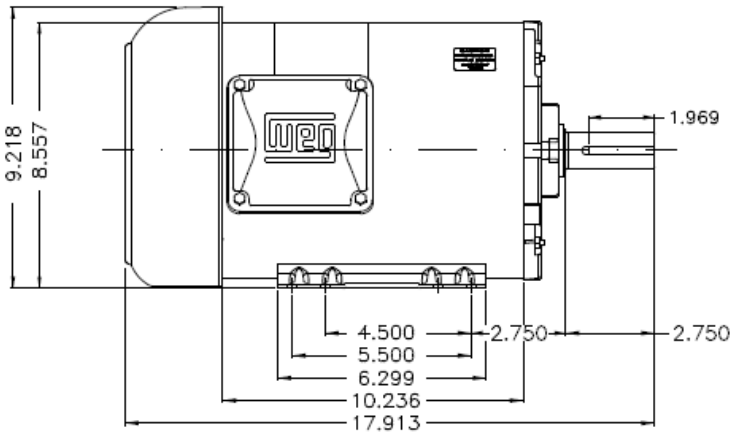
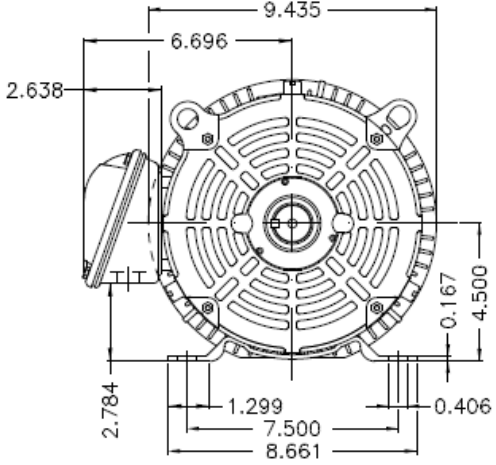
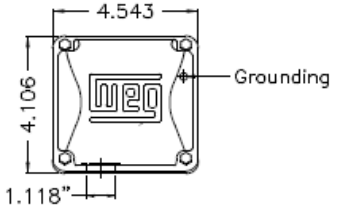


Rev.	Changes Summary	Performed	Checked	Date
Performed by			Page 5 / 5	Revision
Checked by				
Date	04/09/2019			

This document is exclusive property of WEG S/A. Reprinting is not allowed without written authorization of WEG S/A.
Subject to change without notice


Dimensões em polegada
Dimensions in inches

THIS IS AN UPDATED REVISION, THE
PREVIOUS ONE MUST BE DISREGARDED.



Color Munsell N 1 matte black
Painting plan 207N
Mounting F-1/B3R(D)

ECM	LOC	SUMMARY OF MODIFICATIONS	EXECUTED	CHECKED	RELEASED	DATE	VER

EXECUTED	USIRADMIN	 THREE P, MOTOR CLOS ROLLED STEEL, NEMA PREM FRAME 1824T P55 TEFC WEG code: 1263076			
CHECKED					
RELEASED					



5 HP 04 Poles 60Hz

A REL DT 04.08.2018 WVO Jaraguá do Sul Product Engineering SHEET 1 / 1

DATA SHEET



Three Phase Induction Motor - Squirrel Cage

Customer	:		
Product line	: NEMA Premium Efficiency Three-Phase	Product code : 11416668	
		Catalog # : 00518ET3E184T-W22	
Frame	: 182/4T	Locked rotor time	: 27s (cold) 15s (hot)
Output	: 5 HP (3.7 kW)	Temperature rise	: 80 K
Poles	: 4	Duty cycle	: Cont.(S1)
Frequency	: 60 Hz	Ambient temperature	: -20°C to +40°C
Rated voltage	: 230/460 V	Altitude	: 1000 m.a.s.l.
Rated current	: 12.9/6.45 A	Protection degree	: IP55
L. R. Amperes	: 96.7/48.4 A	Cooling method	: IC411 - TEFC
LRC	: 7.5x(Code J)	Mounting	: F-1
No load current	: 6.40/3.20 A	Rotation ¹	: Both (CW and CCW)
Rated speed	: 1755 rpm	Noise level ²	: 56.0 dB(A)
Slip	: 2.50 %	Starting method	: Direct On Line
Rated torque	: 2.07 kgfm	Approx. weight ³	: 45.0 kg
Locked rotor torque	: 229 %		
Breakdown torque	: 320 %		
Insulation class	: F		
Service factor	: 1.25		
Moment of inertia (J)	: 0.0169 kgm ²		
Design	: B		
Output	50% 75% 100%	Foundation loads	
Efficiency (%)	88.5 89.5 89.5	Max. traction	: 135 kgf
Power Factor	0.62 0.74 0.80	Max. compression	: 180 kgf
Bearing type	:	<u>Drive end</u>	6207 ZZ
Sealing	:	<u>Non drive end</u>	6206 ZZ
Lubrication interval	:		V'Ring
Lubricant amount	:		-
Lubricant type	:		Mobil Polyrex EM
Notes			
USABLE @208V 14.3A SF 1.15 SFA 16.4A			

MADE IN BRAZIL
11416668



MODEL 00518ET3E184T-W22

Inverter Duty Motor
Severe Duty



For use on 60Hz
Class I, Div 2, Gr A, B, C and D - T3
Class I, Zone 2, IIC - T3
Class II, Div 2, Gr F and G - T5
For use on PWM: Gr. A, B, C, D, F and G,
VT 1000:1, CT 20:1, 1.00SF - T4A



FOR SAFE AREA
Mod.TE1BFOXON
CC029A

PH3 60Hz Fr. 182/4T 1000m.a.s.l. IP55 TEFC 991b

V 230/460

A 12.9/6.45

HP 5.0

kW 3.7

SF 1.25

SFA 16.1/8.06

RPM 1755

PF 0.80

AMB 40°C

INS cl. F DT80K

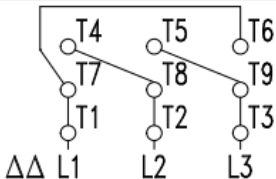
NEMA NOM EFF 89.5%

DUTY CONT.

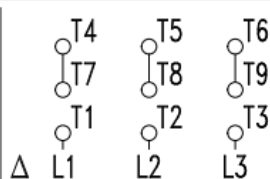
DES B Code J

USABLE @208V 14.3A SF 1.15 SFA 16.4

5.0HP 3.7KW 50Hz 380V 7.74A 1440RPM SF 1.15 SFA 8.90 EFF 86.5% (IE2)



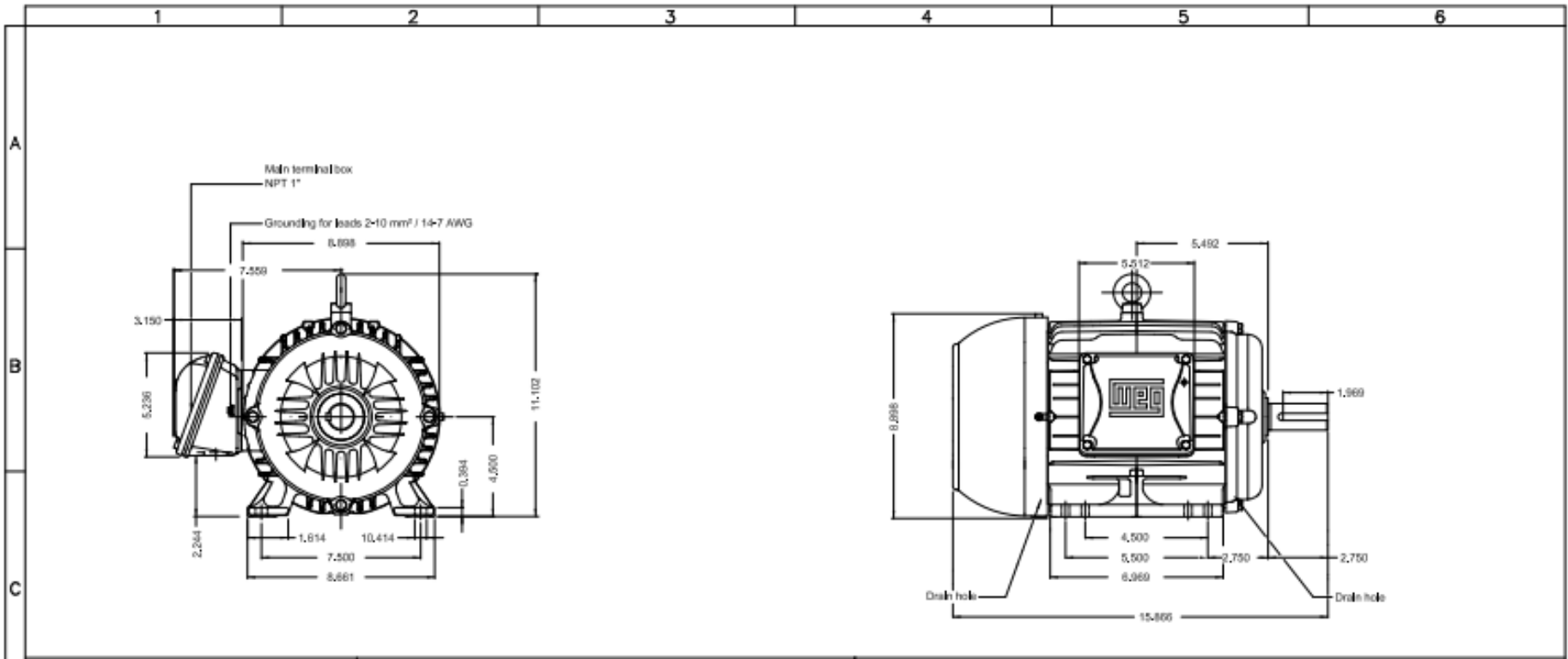
208-230V



380//460V

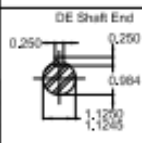


MOBIL POLYREX EM



D												

E												



Color RAL 9009
 Painting plan 207A
 Mounting B3R(D)

5 HP 04 Poles 60 Hz												A
SUMMARY OF MODIFICATIONS												
EXECUTED	LOC	BY/USER	THREE PH MOTOR W22 PREM. EFF.	EXECUTED	CHECKED	RELEASED	DATE	VER				
CHECKED			FRAME 1824T P55 TFC									
RELEASED												
REL. DT.		WMO	Jergue do Sal	Product Engineering	SHEET	1	1					



Dimension in inches