

A

B

C

D

E

F

G

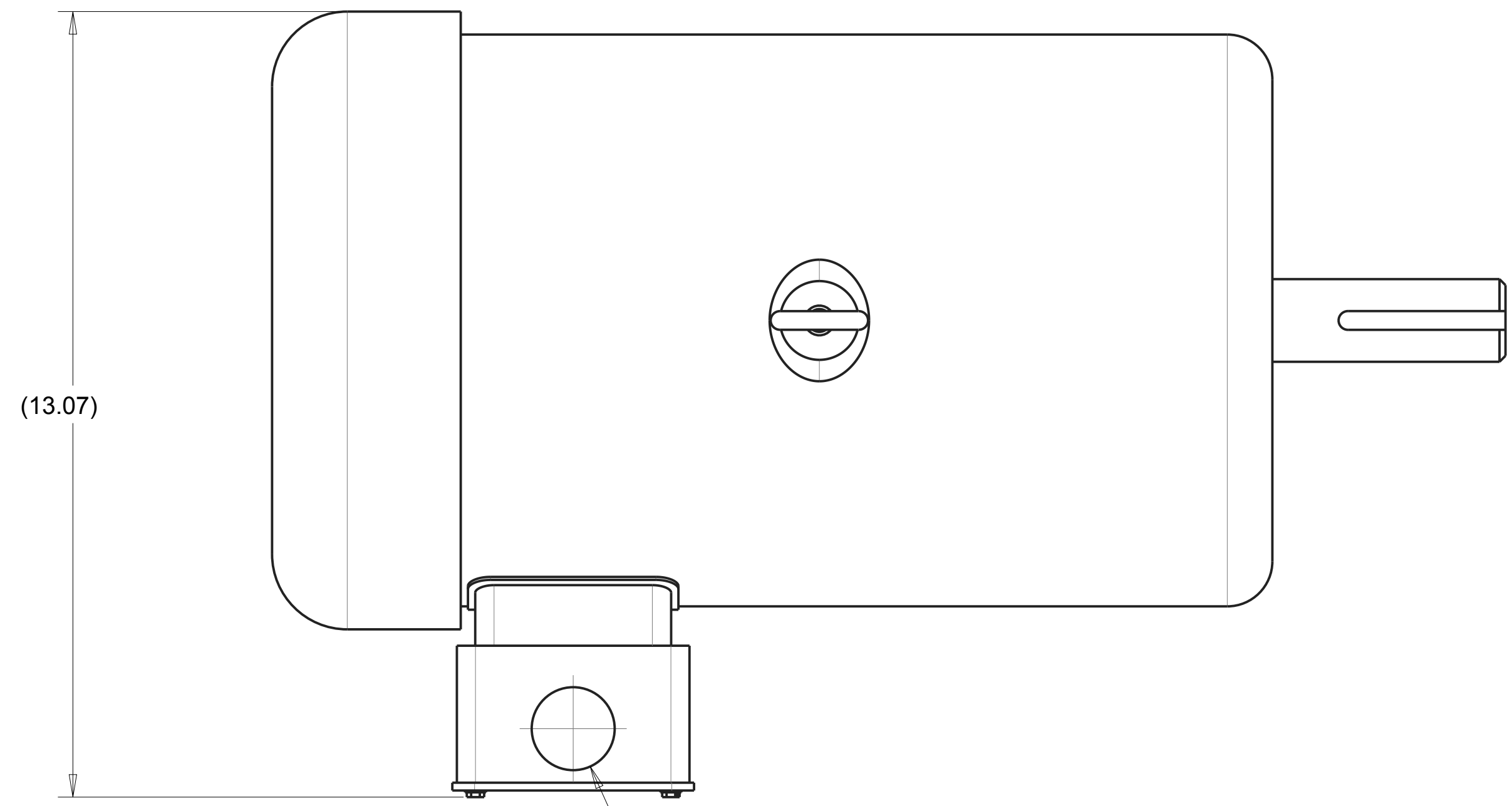
H

I

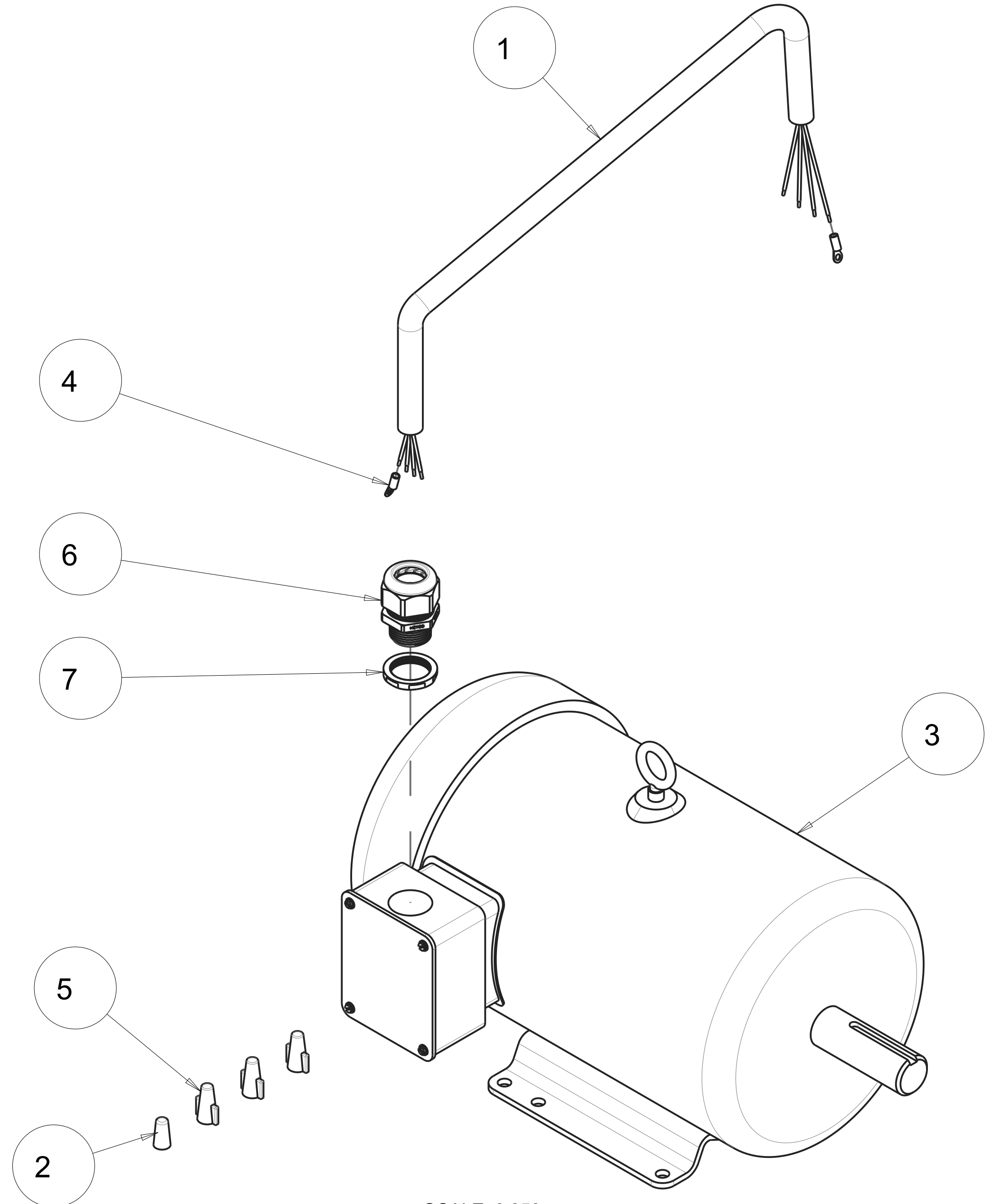
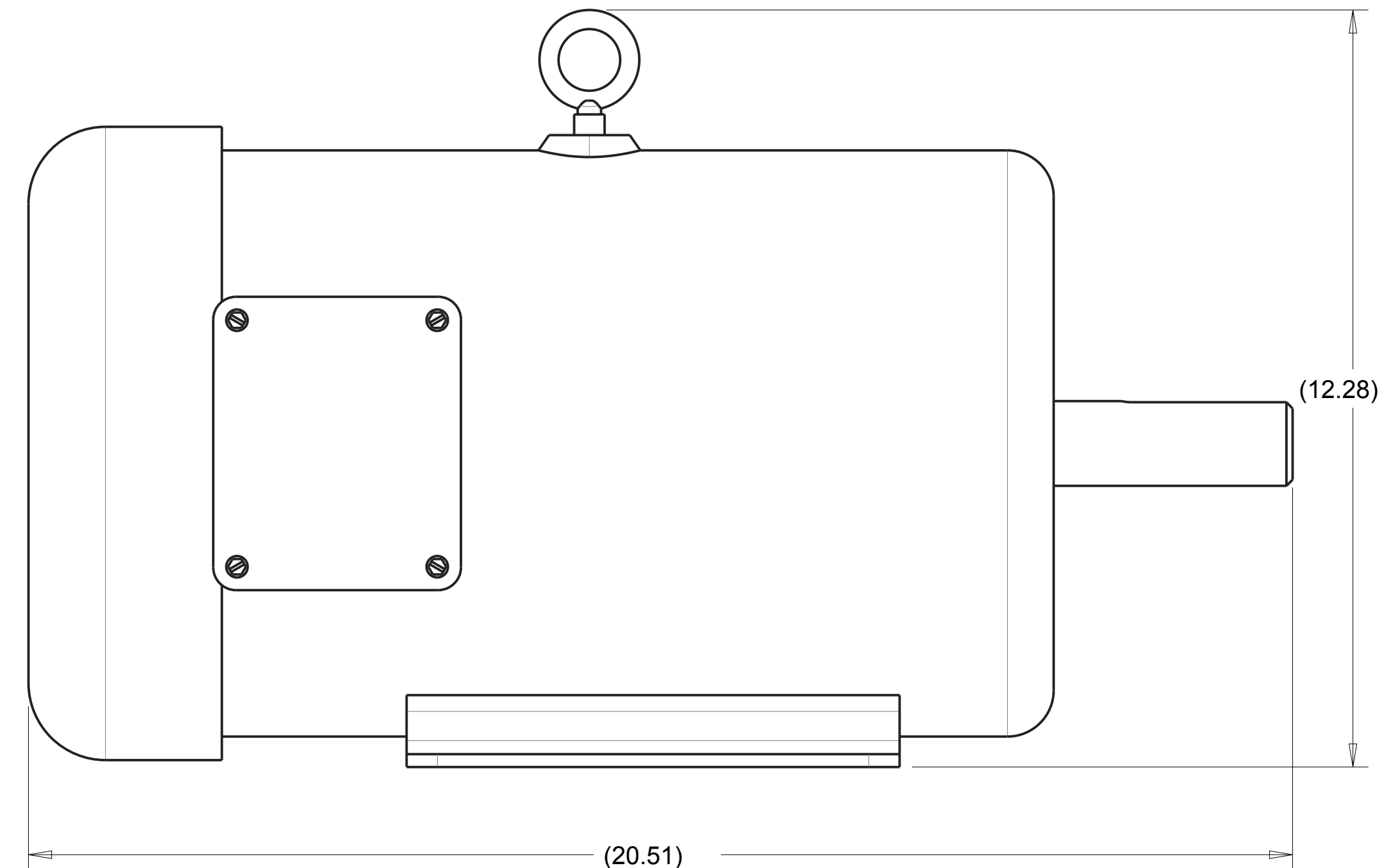
J

NOTES:
 1. THIS ASSEMBLY CAN BE SUBSTITUTED WITH WEG VERSION, 172561-WEG, ON JOBS.

| REVISIONS | | | | |
|-----------|-----|--|----------|----------|
| ZONE | REV | DESCRIPTION | DATE | APPROVED |
| - | - | INITIAL RELEASE, ECO #2346 | 11/28/17 | SSH |
| - | A | REMOVE MACHINING & ADD BOM & ADD -WEG, ECO# 2466 | 01/09/20 | SSH |



MOTOR ARRIVES WITH (Ø 1.38) HOLE.
 FLIP BOX AS ORIENTED IN DRAWING AND ASSEMBLE.



SCALE 0.350

| QTY. REQ. | PART OR IDENTIFYING NO. | DESCRIPTION | ITEM NO. |
|-----------|-------------------------|-------------------------------------|----------|
| 1 | 172898 | NUT, STRN RLF, PLAS, 1NPT | 7 |
| 1 | 172843 | CONNECTOR, CORD, LTF1 | 6 |
| 3 | 172202 | WIRE NUT, 4#10 (RED) | 5 |
| 2 | 166276 | TERMINAL, 8GA X #10 RING PI | 4 |
| 1 | 165676 | MTR, 10HP 208-230/460V 3PH, EM3714T | 3 |
| 1 | 159968 | WIRE NUT 4#16 (YELLOW) | 2 |
| 1 | 156215_2 | CORD, 8/4 SEOWW, 3.5 FT | 1 |

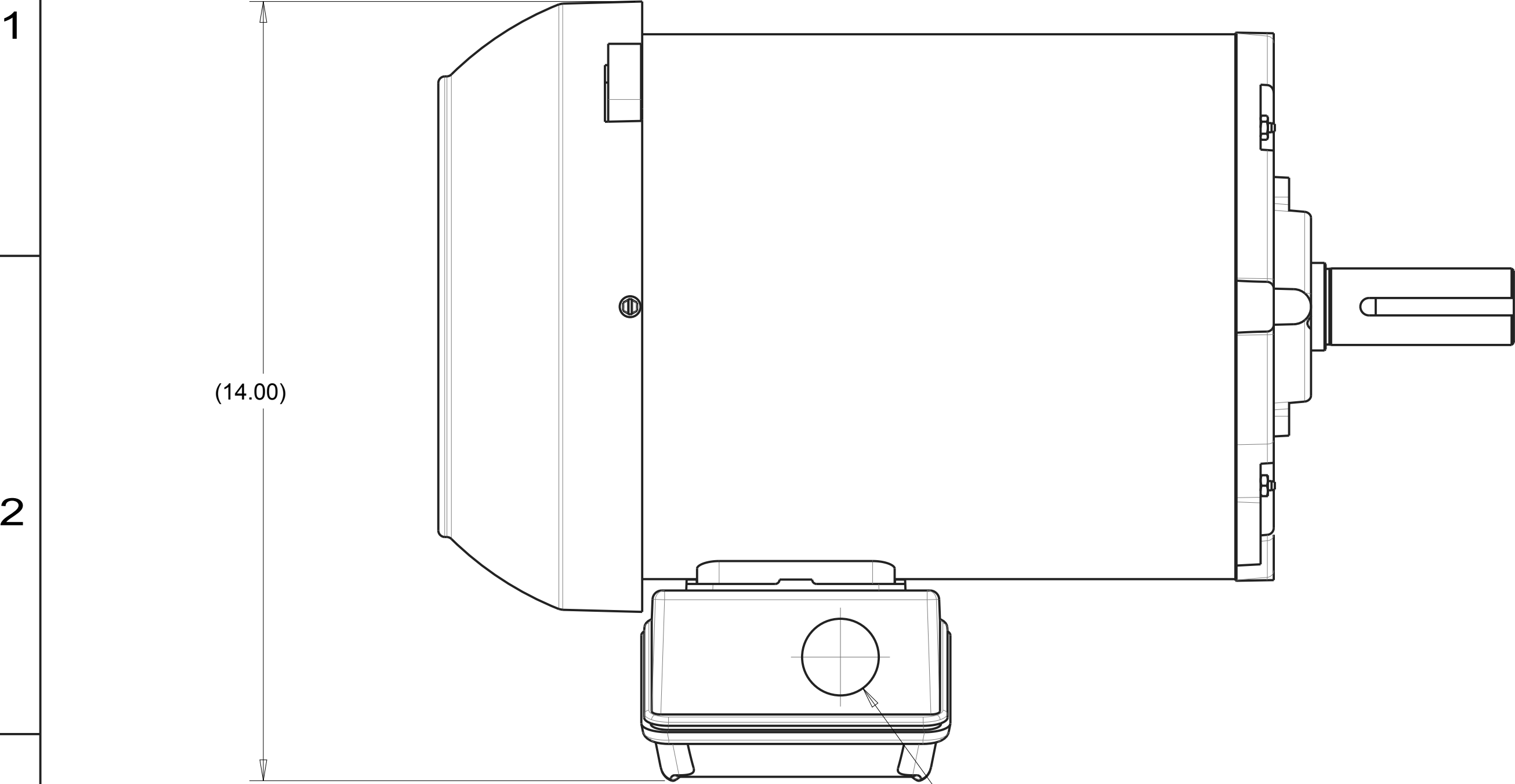
| TOLERANCES UNLESS OTHERWISE SPECIFIED | | | | DATE | |
|---|--|---|----------|----------|------|
| DIMENSIONS ARE IN INCHES | | DRAWN | SSH | 11/28/17 | |
| WHOLE NO. AND FRACTIONS = 1/16 (EXCEPT DRILL HOLES) | | CHECK | SMH | 12/18/17 | |
| X = ± .03 | | DESIGN | SSH | 11/28/17 | |
| XX = ± .010 | | NEXT ASSY: 167426 | | | |
| XXX = ± .005 | | PROPRIETARY NOTICE: THIS DRAWING AND INFORMATION IT CONTAINS ARE THE PROPERTY OF MK DIAMOND INC. AND ARE CONSIDERED CONFIDENTIAL AND MAY NOT BE REPRODUCED, COPIED, OR USED IN PART OR IN WHOLE WITHOUT THE WRITTEN CONSENT OF MK DIAMOND PRODUCTS INC. | | | |
| ANGLES = ± 1/2° | | SIZE | PART NO. | DWG. NO. | REV. |
| DO NOT SCALE DRAWING | | D | 172561 | 172561 | A |

MK MK DIAMOND PRODUCTS INC.
 1315 STORM PARKWAY
 TORRANCE, CA. 90509

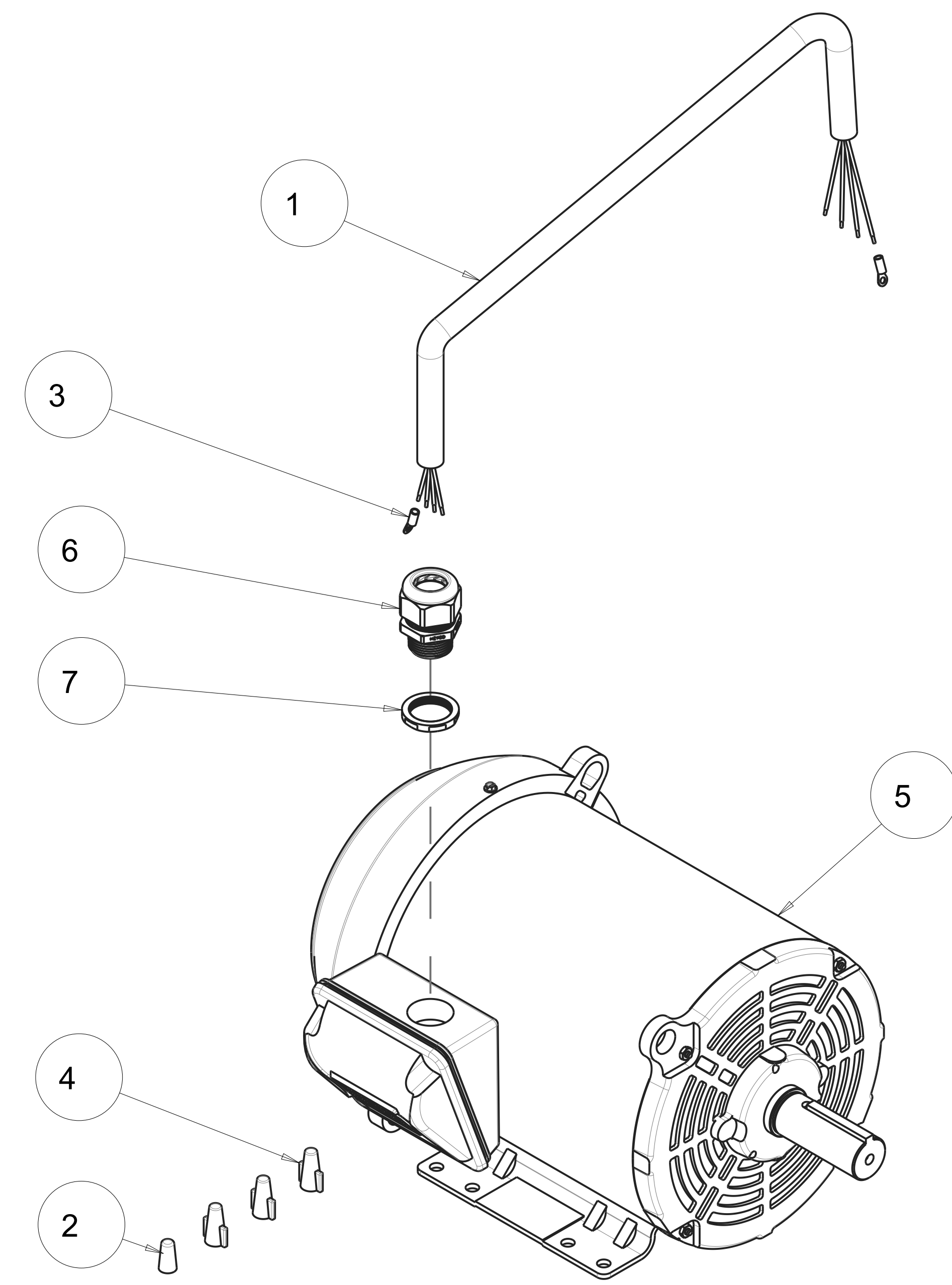
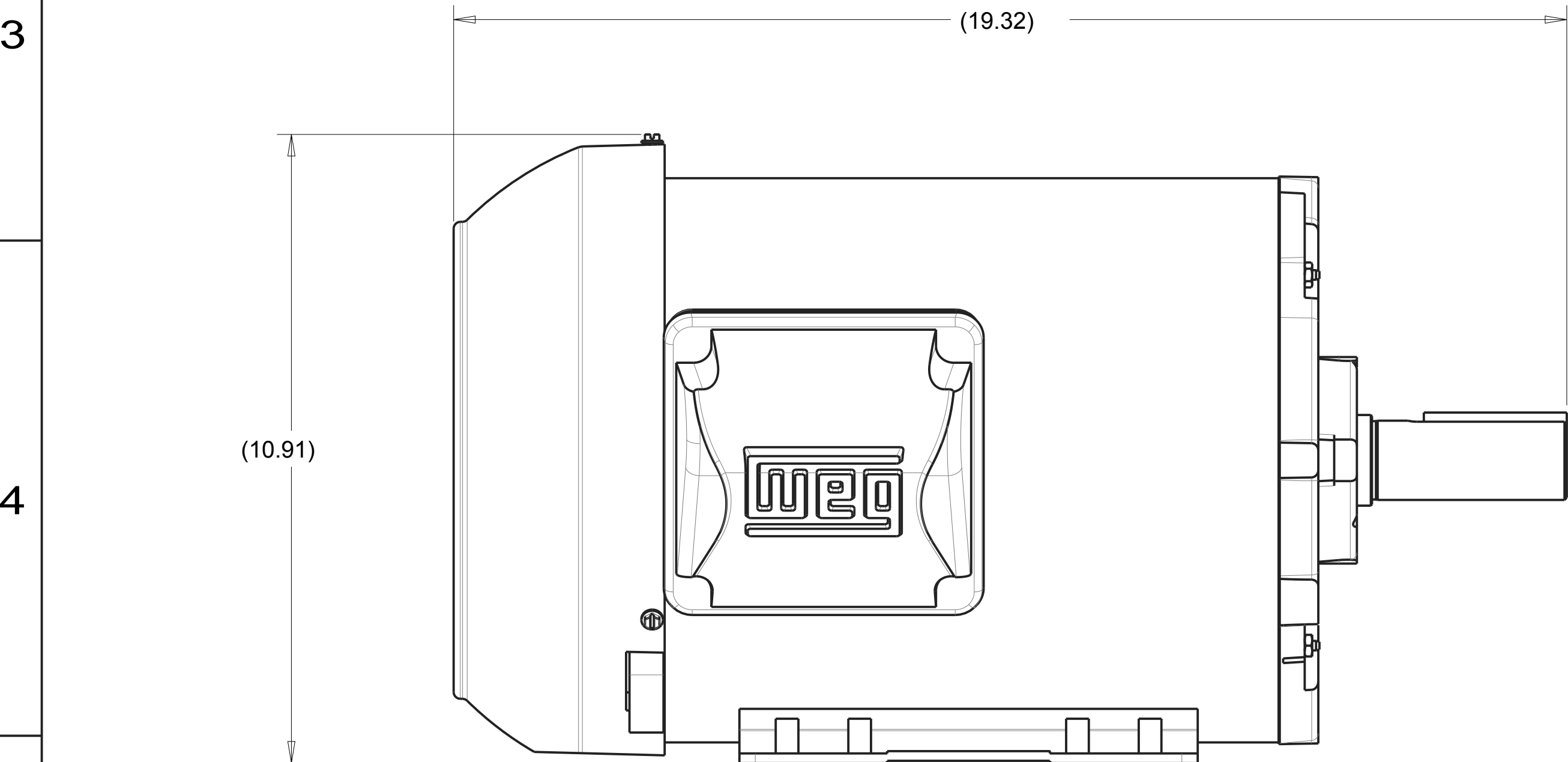
MK-1610B CONCRETE SAW
 MTR, 10HP 208-230/460V 3PH 1725RPM -COMP

SCALE: 0.500 SHEET: 1 of 2

| ZONE | | REV | REVISIONS | | DATE | APPROVED |
|------|--|-----|-------------|--|------|----------|
| | | | DESCRIPTION | | | |
| | | | | | | |




MOTOR ARRIVES WITH (Ø 1.38) HOLE.
FLIP BOX AS ORIENTED IN DRAWING AND ASSEMBLE.



SCALE 0.350

| QTY. REQ. | PART OR IDENTIFYING NO. | DESCRIPTION | ITEM NO. |
|-----------|-------------------------|--|----------|
| 1 | 172898 | NUT, STRN RLF, PLAS, 1NPT | 7 |
| 1 | 172843 | CONNECTOR, CORD, LTF1 | 6 |
| 1 | 172777 | MTR, 10HP 230/460V 3PH 1760RPM WEG 01018ET3E215T-S | 5 |
| 3 | 172202 | WIRE NUT, 4#10 (RED) | 4 |
| 2 | 166276 | TERMINAL, 8GA X #10 RING PI | 3 |
| 1 | 159968 | WIRE NUT 4#16 (YELLOW) | 2 |
| 1 | 156215_2 | CORD, 8/4 SEOWW, 3.5 FT | 1 |

| TOLERANCES UNLESS OTHERWISE SPECIFIED | | DATE | |  MK DIAMOND PRODUCTS INC. 1315 STORM PARKWAY TORRANCE, CA. 90509 |
|---|--|---|------------|--|
| DIMENSIONS ARE IN INCHES | | DRAWN | | |
| WHOLE NO. AND FRACTIONS = 1/16 (EXCEPT DRILL HOLES) | | CHECK | | |
| X = ± .03 XX = ± .010 XXX = ± .005 ANGLES = ± 1/2° | | DESIGN | | |
| DO NOT SCALE DRAWING | | NEXT ASSY. | | MK-1610 CONCRETE SAW MTR, 10HP 208-230/460V 3PH 1760RPM, WEG COMP |
| APPLICATION | | PROPRIETARY NOTICE: THIS DRAWING AND INFORMATION IT CONTAINS ARE THE PROPERTY OF MK DIAMOND INC. AND ARE CONSIDERED CONFIDENTIAL AND MAY NOT BE REPRODUCED, COPIED, OR USED IN PART OR IN WHOLE WITHOUT THE WRITTEN CONSENT OF MK DIAMOND PRODUCTS INC. | | |
| SCALE: 0.500 | | SIZE | REV | |
| | | D 172561-WEG | A | |
| | | DWG. NO. | 172561-WEG | |
| SHEET: 2 of 2 | | | | |