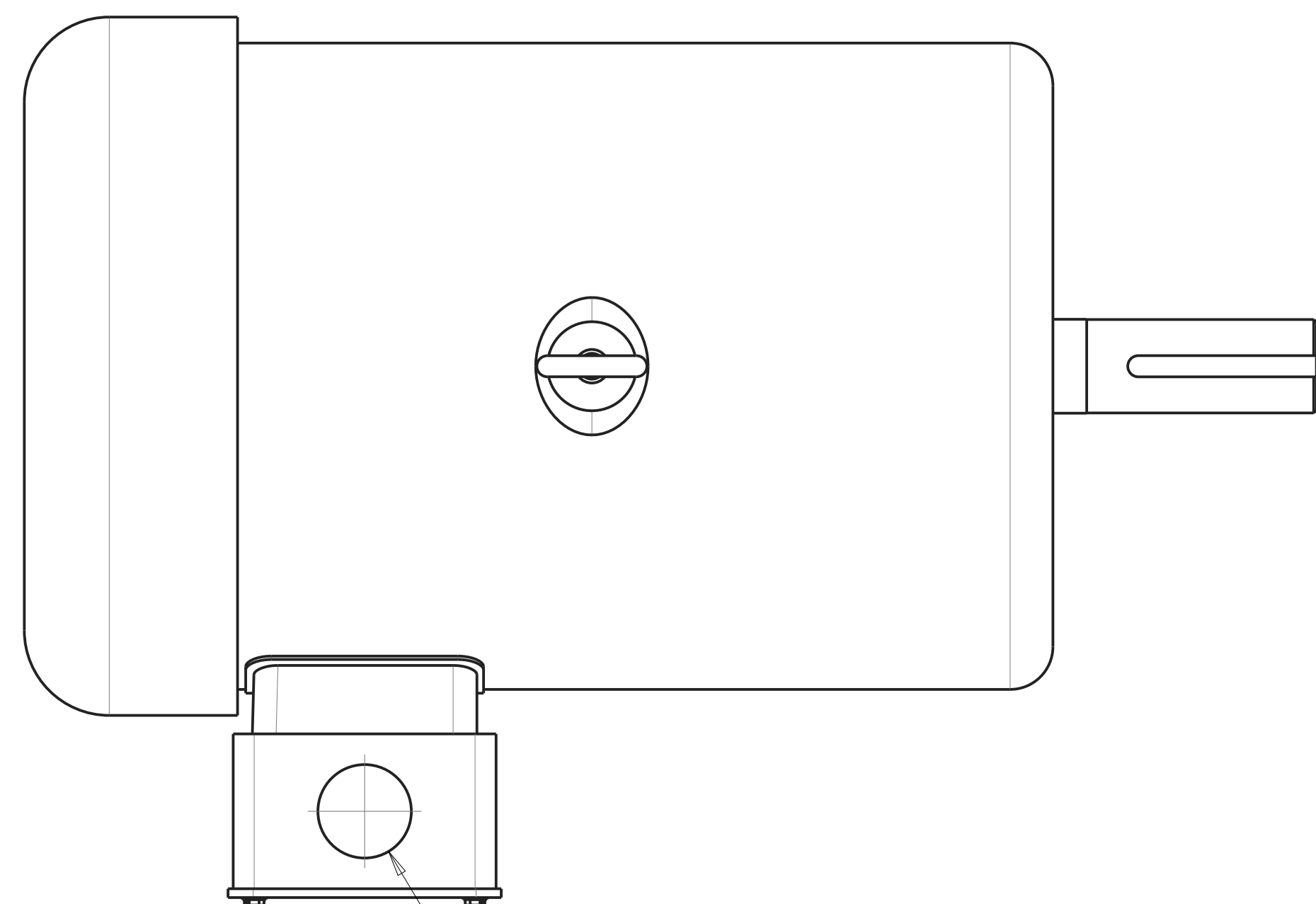
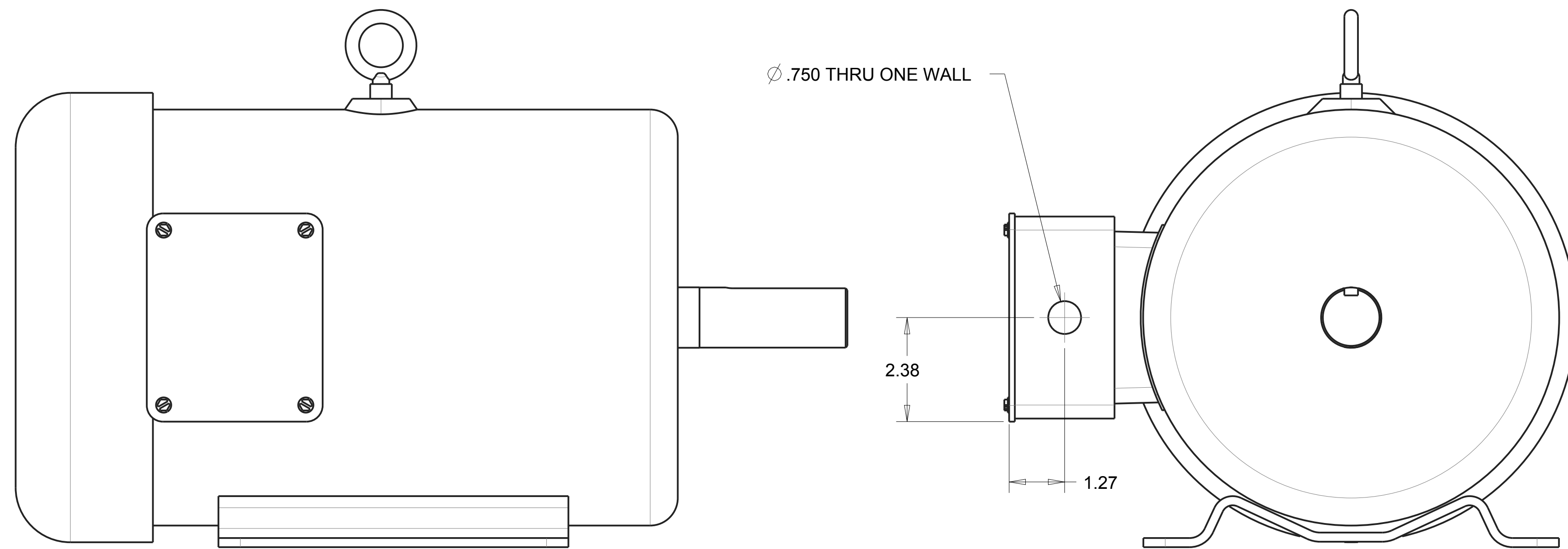


NOTES:  
 1. 230V PUMP IS TO BE USED WITH THIS MOTOR.  
 2. SEE DRAWING, 172771, FOR WIRING DIAGRAM.

MACHINING DETAIL

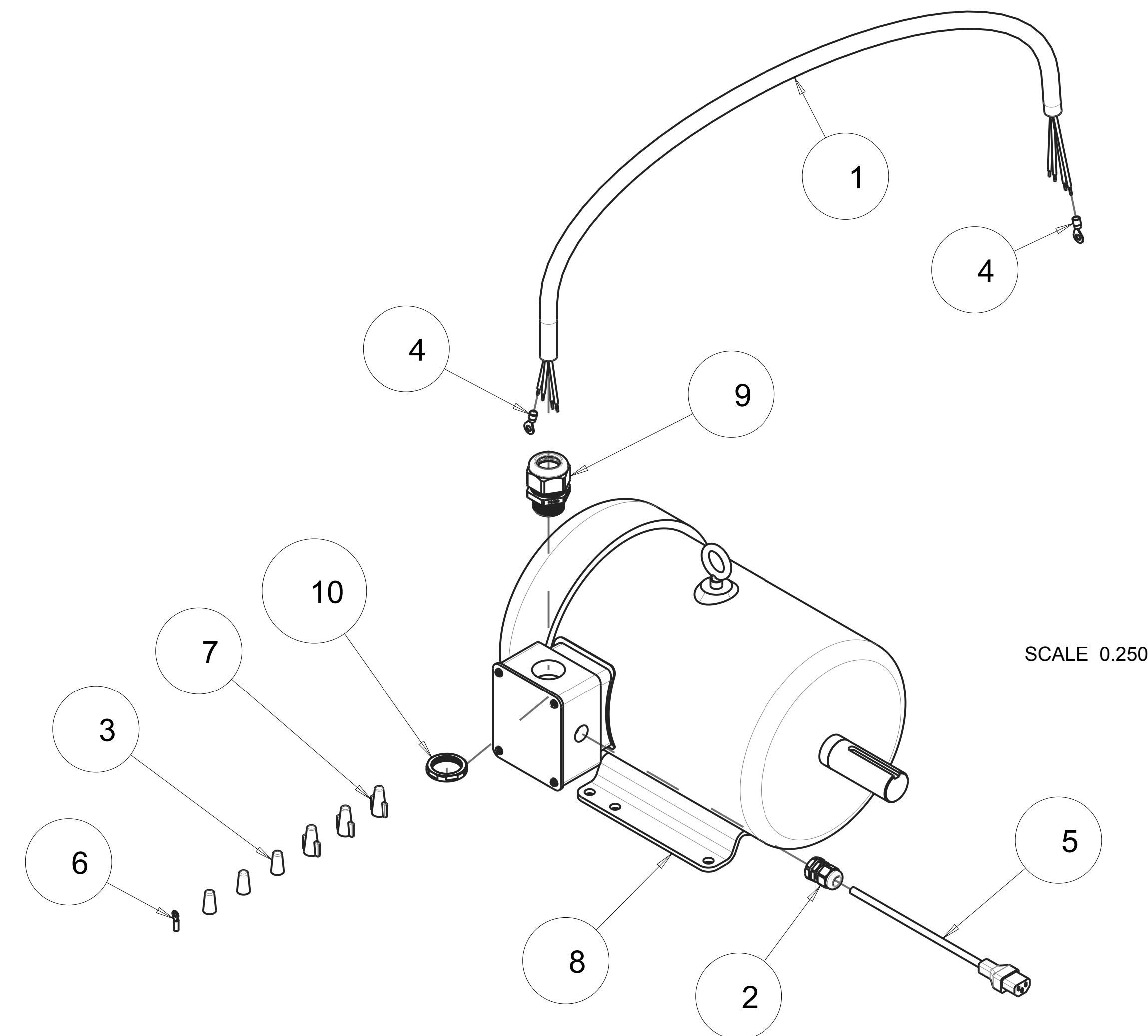


MOTOR ARRIVES WITH (Ø 1.38) LEAD HOLE.  
 ORIENT BOX AS SHOWN BEFORE MACHINING.



REVISIONS				
ZONE	REV	DESCRIPTION	DATE	APPROVED
-	-	INITIAL RELEASE, ECO# 2346	11/21/17	SSH
-	A	ADD -WEG VERSION, ECO# 2450	08/27/19	SSH
-	B	ADD WIRE NUTS, ECO# 2479	04/02/20	SSH

EXPLODE DETAIL



SCALE 0.250

QTY. REQ.	PART OR IDENTIFYING NO.	DESCRIPTION	ITEM NO.
1	172898	NUT, STRN RLF, PLAS, 1NPT	10
1	172843	CONNECTOR, CORD, LTF1	9
1	172426	MTR, 7.5HP 230V/460V 3PH 1725RPM, EM3710T	8
3	172202	WIRE NUT, 4#10 (RED)	7
1	169294	TERMINAL, 22-18 X #10 RING PI	6
1	166279	CORD, 9', W/IEC60320 FEM	5
2	162471	TERMINAL, 12-10 X 1/4 RING PI	4
3	159968	WIRE NUT 4#16 (YELLOW)	3
1	159582	CONNECTOR, CORD, LTF11	2
1	156215_01	CORD, ELEC, 10/4 SEOWW, YELLOW (4.5 FT)	1

PARTS LIST			
TOLERANCES UNLESS OTHERWISE SPECIFIED	DATE	MK DIAMOND PRODUCTS INC.	
DRAWN	SSH	11/21/17	1315 STORM PARKWAY TORRANCE, CA. 90509
CHECK	SMH	12/18/17	
DESIGN	SSH	11/21/17	
NEXT ASSY.		-	
PROPRIETARY NOTICE: THIS DRAWING AND INFORMATION IT CONTAINS ARE THE PROPERTY OF MK DIAMOND INC. AND ARE CONSIDERED CONFIDENTIAL AND MAY NOT BE REPRODUCED, COPIED, OR USED IN PART OR IN WHOLE WITHOUT THE WRITTEN CONSENT OF MK DIAMOND PRODUCTS INC.			
DO NOT SCALE DRAWING	APPLICATION	SCALE: 0.500	SHEET: 1 of 2



**MK-5007 BLOCK SAW**  
 MTR, 7.5HP 230/460V 3PH 1725RPM, EM3710T -COMP

SIZE **D** PART NO. **172559** DWG. NO. **172559** REV. **B**

A

B

C

D

E

F

G

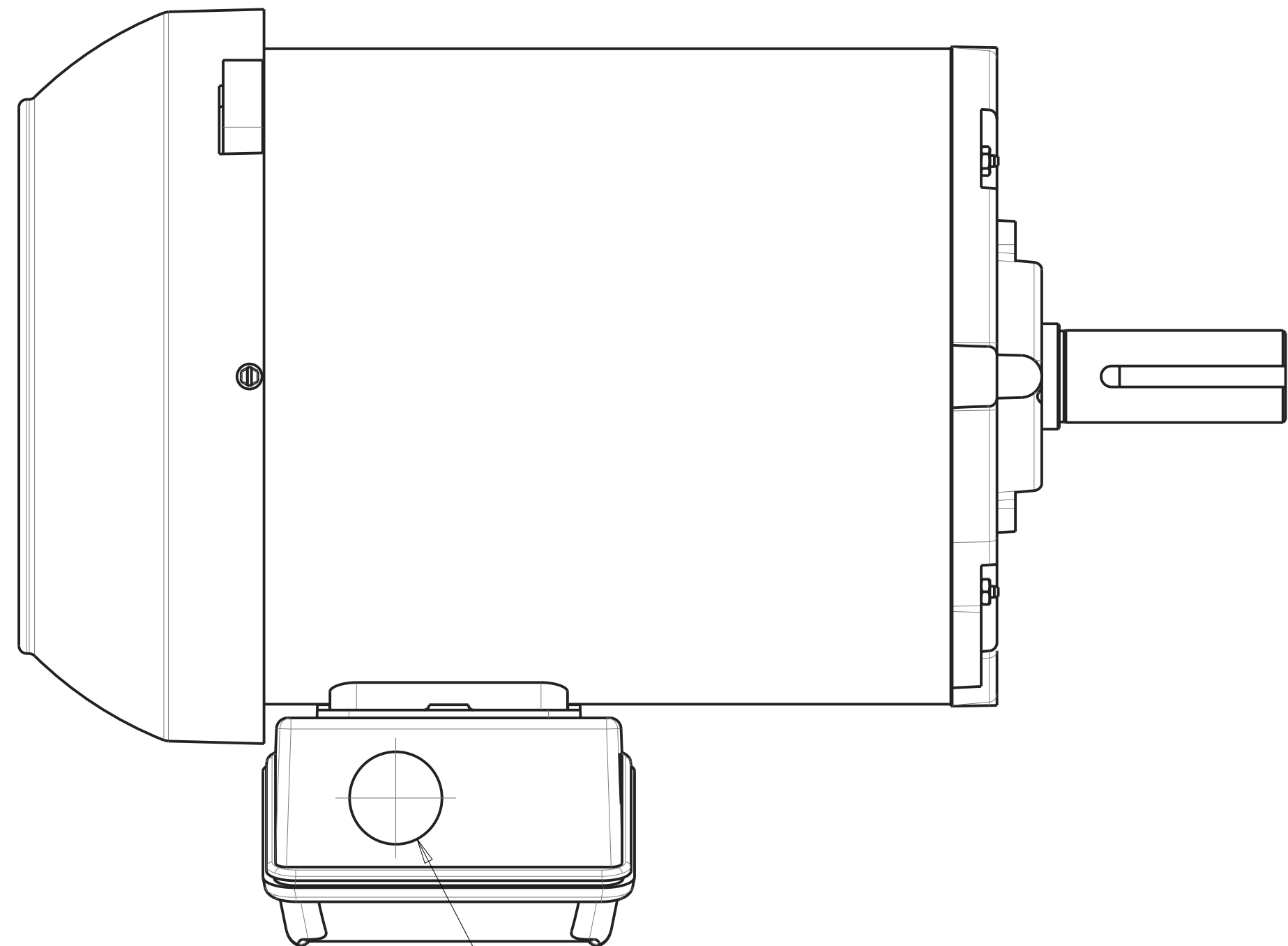
H

I

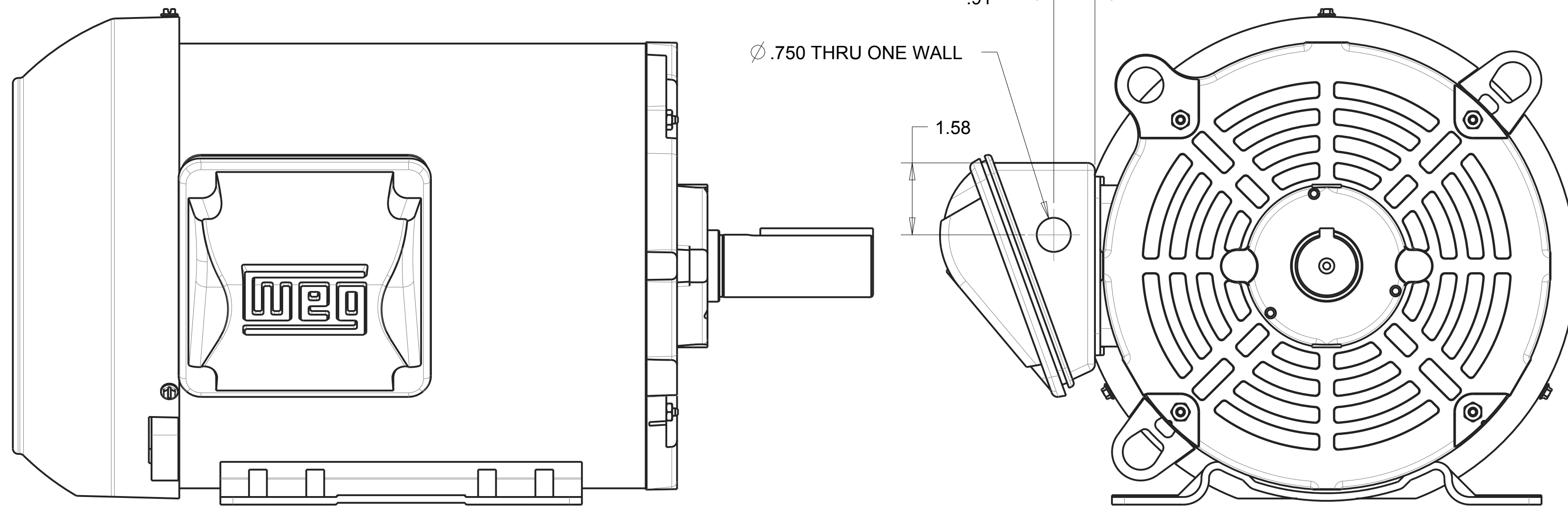
J

NOTES:  
 1. 230V PUMP IS TO BE USED WITH THIS MOTOR.  
 2. SEE DRAWING, 172771, FOR WIRING DIAGRAM.

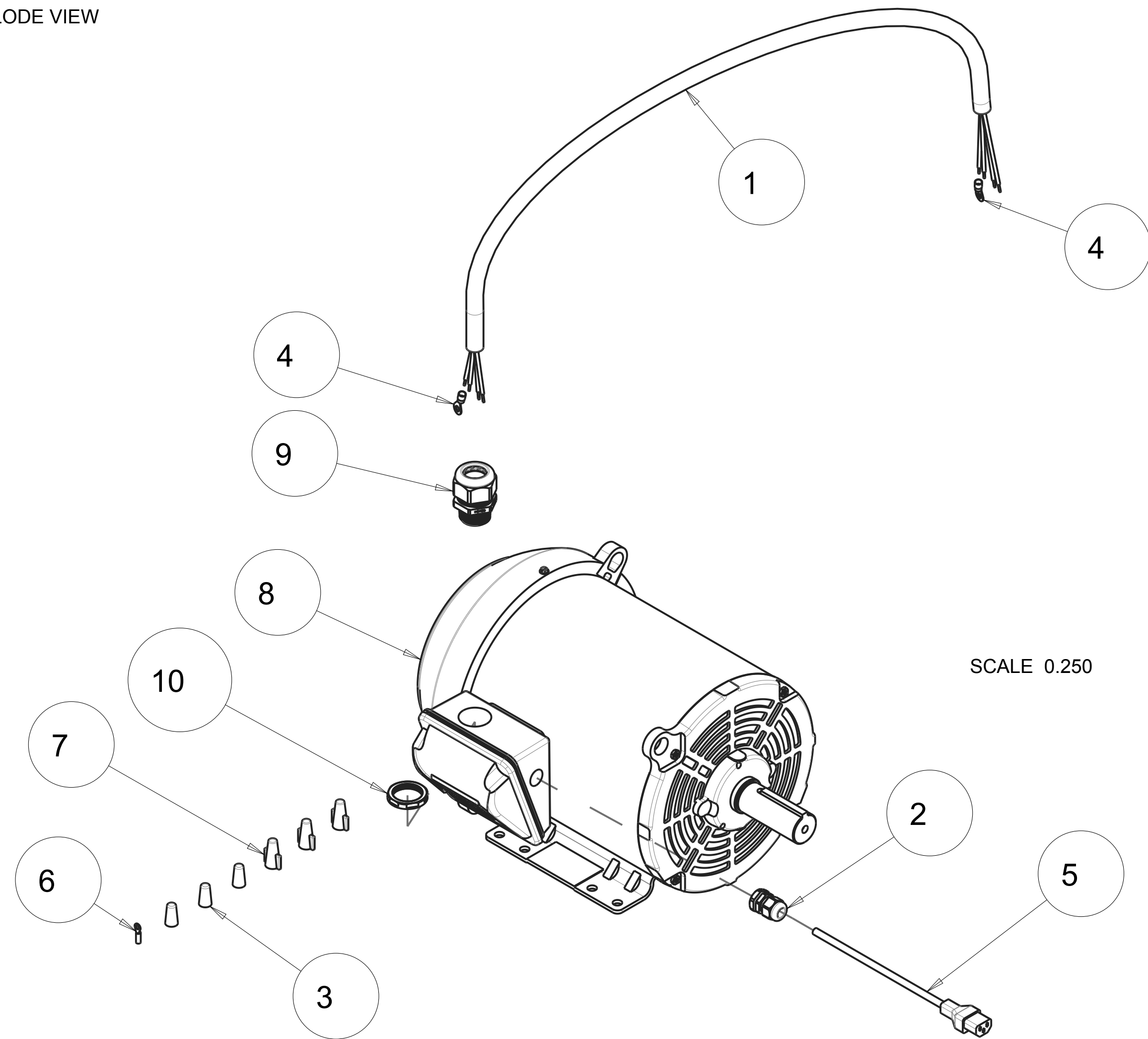
MACHINING VIEW



MOTOR ARRIVES WITH (Ø 1.38) LEAD HOLE.  
 ORIENT BOX AS SHOWN BEFORE MACHINING.



EXPLODE VIEW



SCALE 0.250

QTY. REQ.	PART OR IDENTIFYING NO.	DESCRIPTION	ITEM NO.
1	172898	NUT, STRN RLF, PLAS, 1NPT	10
1	172843	CONNECTOR, CORD, LTF1	9
1	172776	MTR, 7.5HP 230/460V 3PH 1725RPM, WEG 00718ET3E213T-S	8
3	172202	WIRE NUT, 4#10 (RED)	7
1	169294	TERMINAL, 22-18 X #10 RING PI	6
1	166279	CORD, 9', W/IEC60320 FEM	5
2	162471	TERMINAL, 12-10 X 1/4 RING PI	4
3	159968	WIRE NUT 4#16 (YELLOW)	3
1	159582	CONNECTOR, CORD, LTF11	2
1	156215_08	CORD, ELEC, 10/4 SEOWW, YELLOW (4.5 FT)	1

TOLERANCES UNLESS OTHERWISE SPECIFIED		DATE	
DIMENSIONS ARE IN INCHES		DRAWN	
WHOLE NO. AND FRACTIONS = 1/16 (EXCEPT DRILL HOLES)		CHECK	
X = ± .03		DESIGN	
XX = ± .010		NEXT ASSY.	
XXX = ± .005		<p>PROPRIETARY NOTICE: THIS DRAWING AND INFORMATION IT CONTAINS ARE THE PROPERTY OF MK DIAMOND INC. AND ARE CONSIDERED CONFIDENTIAL AND MAY NOT BE REPRODUCED, COPIED, OR USED IN PART OR IN WHOLE WITHOUT THE WRITTEN CONSENT OF MK DIAMOND PRODUCTS INC.</p>	
ANGLES = ± 1/2°		<p><b>MK</b> MK DIAMOND PRODUCTS INC.          1315 STORM PARKWAY          TORRANCE, CA. 90509</p>	
DO NOT SCALE DRAWING		<p><b>MK-5007 BLOCK SAW</b>          MTR, 7.5HP 230/460V 3PH 1725RPM WEG -COMP</p>	
SIZE	PART NO.	DWG. NO.	REV.
D	172559-WEG	172559-WEG	B
APPLICATION		SCALE: 0.500	SHEET: 2 of 2