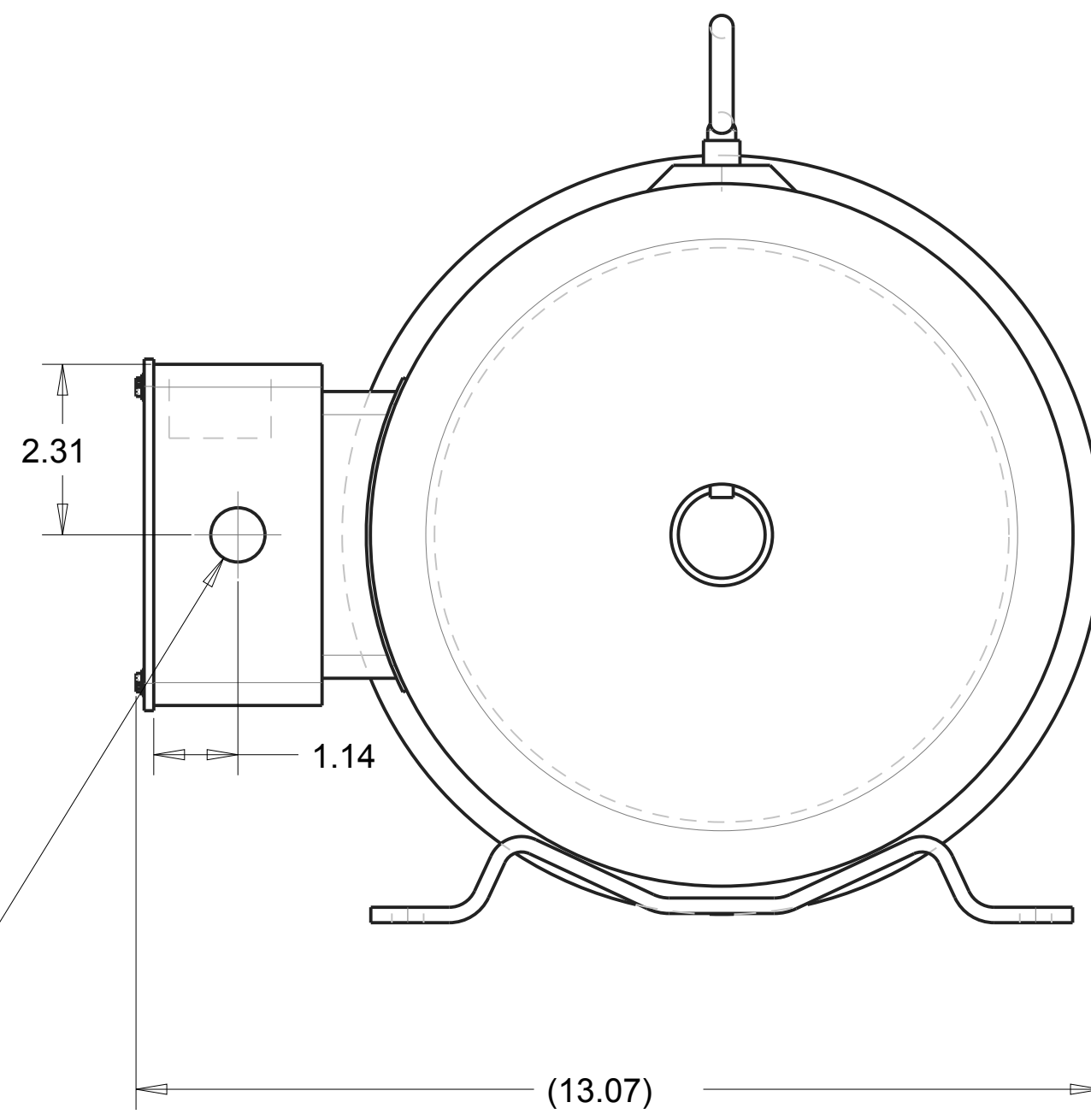
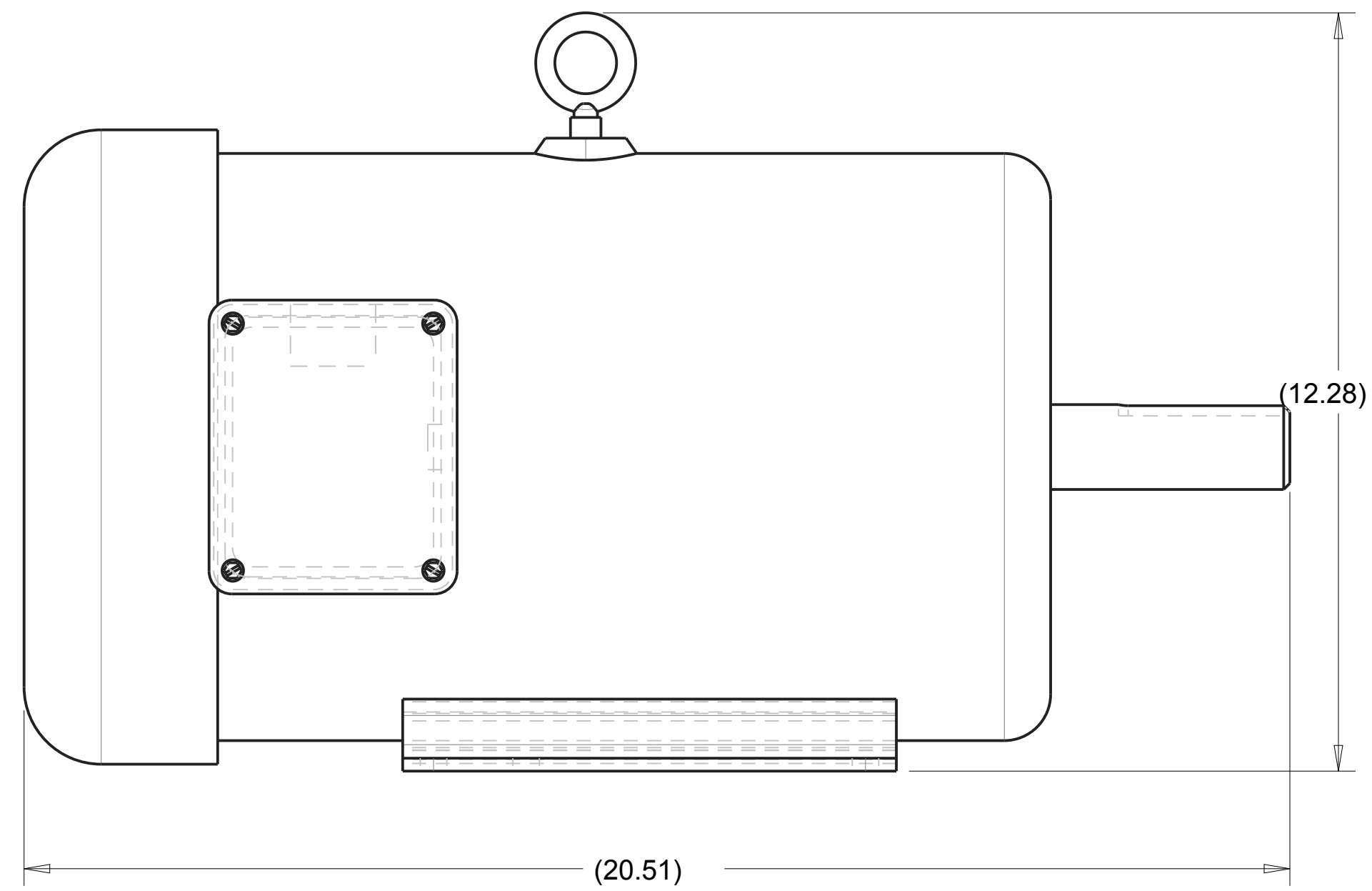
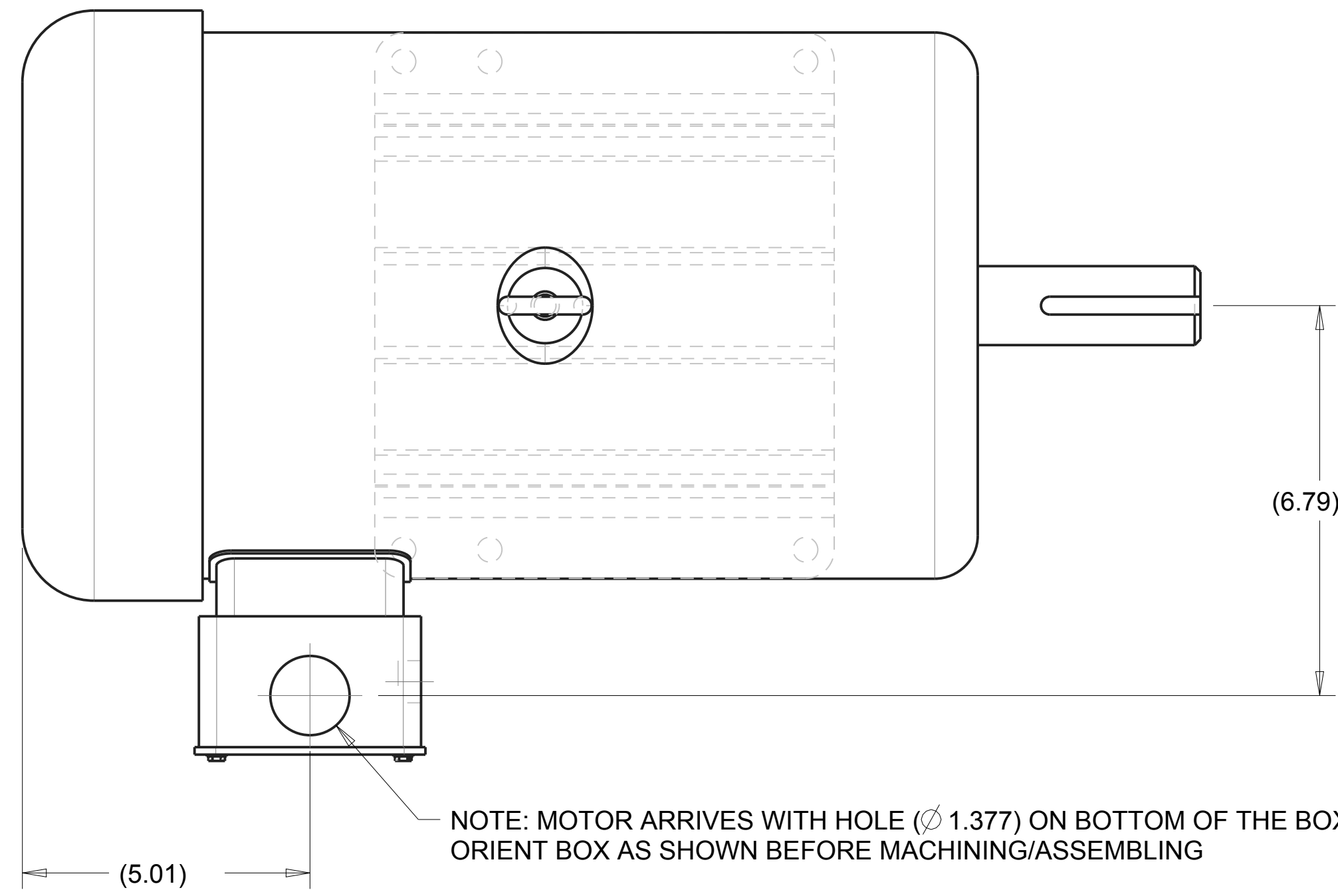


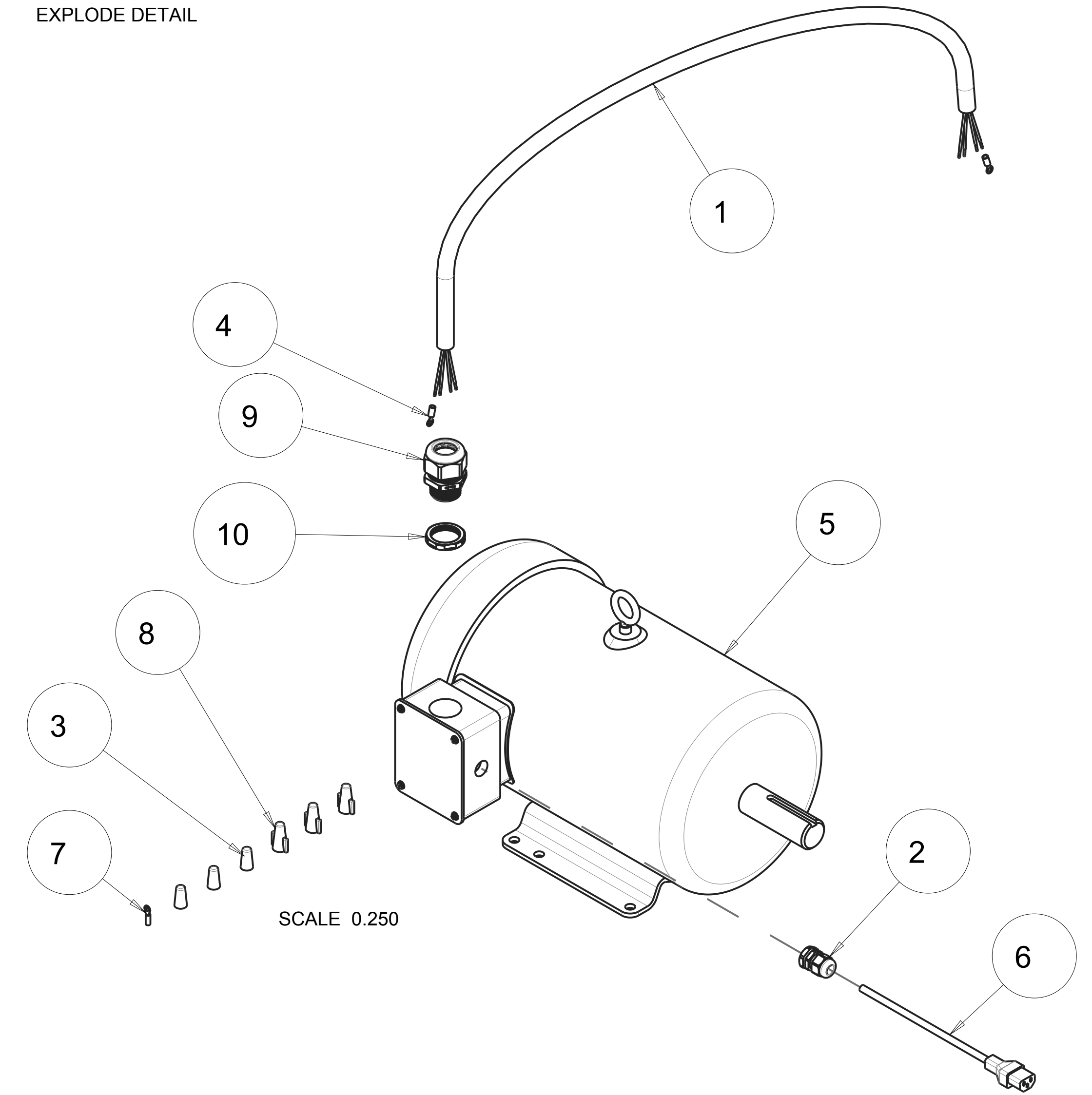
NOTES:
 1. SEE MOTOR ASSEMBLY DRAWING FOR WIRING DIAGRAM.
 2. CAN BE REPLACED WITH 172556-WEG ON JOBS WHEN BALDOR MOTOR IS NOT AVAILABLE.

MACHINING DETAIL



REVISIONS				
ZONE	REV	DESCRIPTION	DATE	APPROVED
-	-	INITIAL RELEASE, ECO #2346	11/20/17	SSH
-	A	CHANGE STRN RLF & ADD -WEG VERSION, ECO# 2450	09/05/19	SSH
-	B	ADD WIRE NUTS AND TERMINALS, ECO# 2479	04/07/20	SSH

EXPLODE DETAIL



QTY. REQ.	PART OR IDENTIFYING NO.	DESCRIPTION	ITEM NO.
1	172898	NUT, STRN RLF, PLAS, 1NPT	10
1	172843	CONNECTOR, CORD, LTF1	9
3	172202	WIRE NUT, 4#10 (RED)	8
1	169294	TERMINAL, 22-18 X #10 RING PI	7
1	166279	CORD, 9', W/IEC60320 FEM	6
1	165676	MTR, 10HP 208-230/460V 3PH, EM3714T	5
2	165108	TERMINAL, 12-10 X #10 RING PI	4
3	159968	WIRE NUT 4#16 (YELLOW)	3
1	159582	CONNECTOR, CORD, LTF11	2
1	156215_03	CORD, ELEC, 10/4 SEOWW, YELLOW (4.5 FT)	1

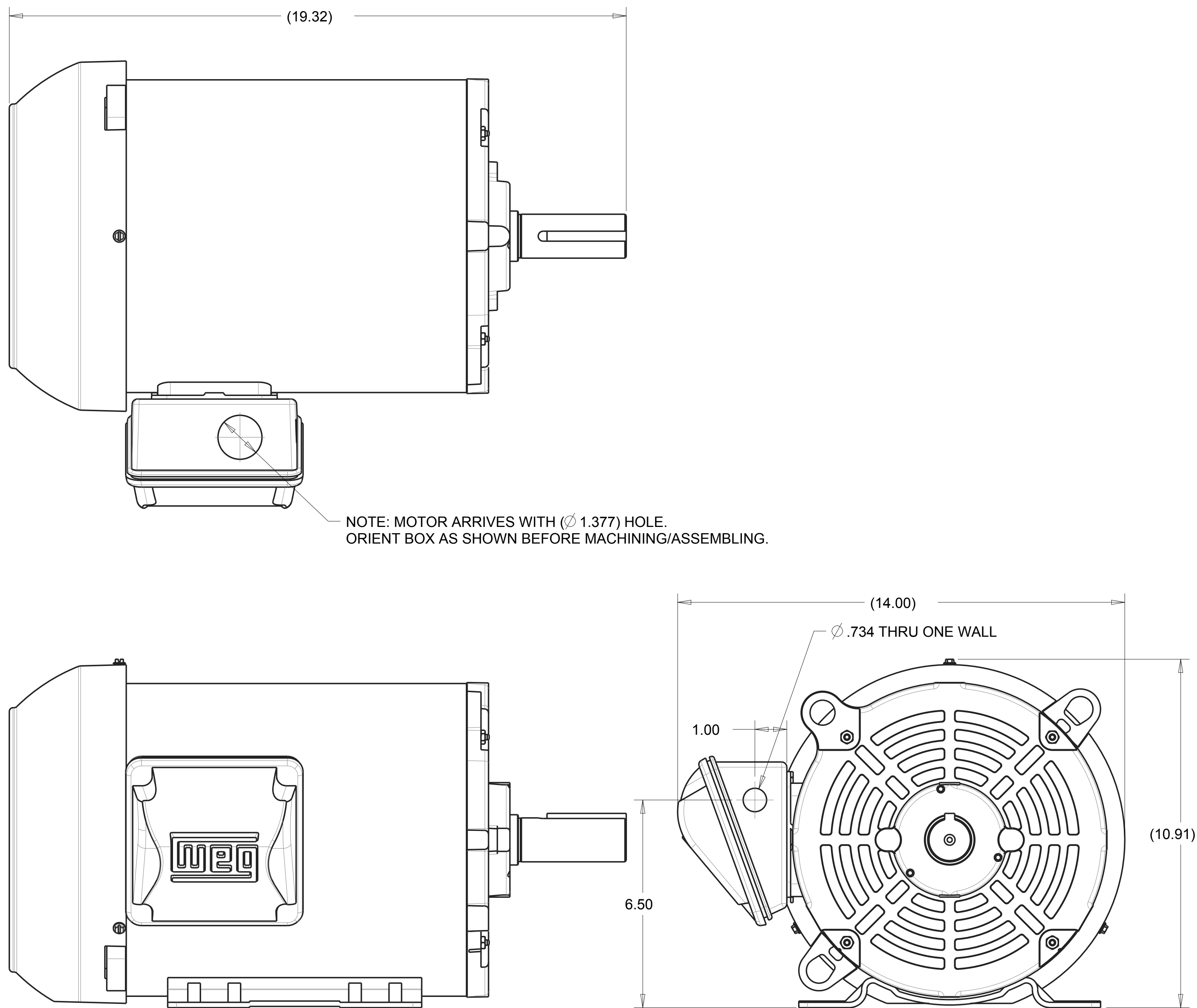
TOLERANCES UNLESS OTHERWISE SPECIFIED			
DRAWN	SSH	DATE	
CHECK	SMH	12/18/17	
DESIGN	SSH	11/20/17	
DIMENSIONS ARE IN INCHES			
WHOLE NO. AND FRACTIONS = 1/16 (EXCEPT DRILL HOLES)			
X = ±.03			
XX = ±.010			
XXX = ±.005			
ANGLES = ±1/2°			
DO NOT SCALE DRAWING			
APPLICATION			
SCALE: 0:450			
SHEET: 1 of 2			

PARTS LIST			
QTY.	PART NO.	DESCRIPTION	ITEM NO.
1	172898	NUT, STRN RLF, PLAS, 1NPT	10
1	172843	CONNECTOR, CORD, LTF1	9
3	172202	WIRE NUT, 4#10 (RED)	8
1	169294	TERMINAL, 22-18 X #10 RING PI	7
1	166279	CORD, 9', W/IEC60320 FEM	6
1	165676	MTR, 10HP 208-230/460V 3PH, EM3714T	5
2	165108	TERMINAL, 12-10 X #10 RING PI	4
3	159968	WIRE NUT 4#16 (YELLOW)	3
1	159582	CONNECTOR, CORD, LTF11	2
1	156215_03	CORD, ELEC, 10/4 SEOWW, YELLOW (4.5 FT)	1

		MK DIAMOND PRODUCTS INC. 1315 STORM PARKWAY TORRANCE, CA. 90509	
MK-5010T BLK SAW MTR, 10HP 208-230/460V 3PH 1725RPM -COMP			
SIZE	PART NO.	DWG. NO.	REV.
D	172556	172556	B

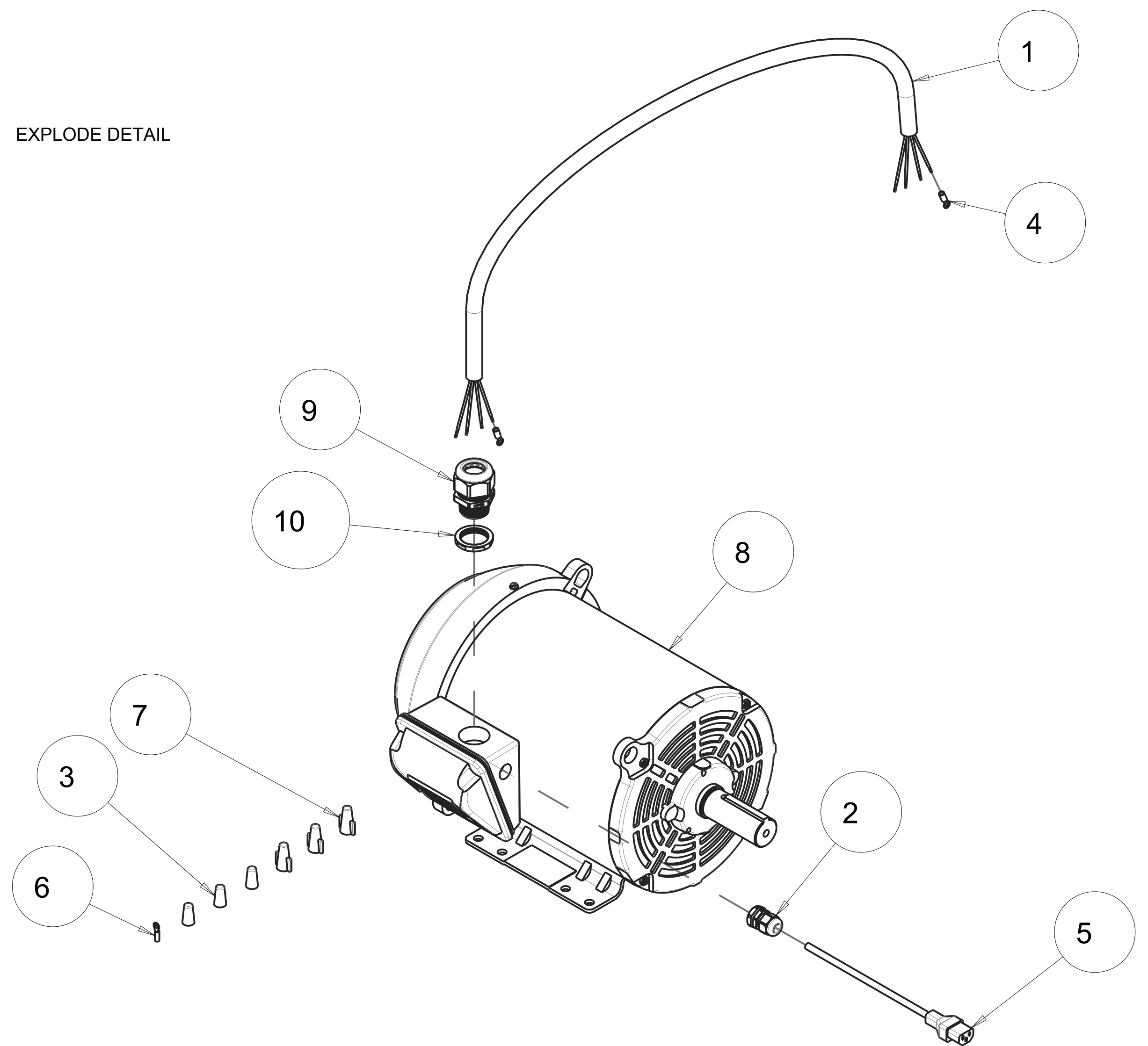
NOTES:
 1. SEE MOTOR ASSEMBLY FOR WIRING DIAGRAM.
 2. CAN BE USED TO REPLACE 172556 ON JOBS WHEN BALDOR MOTOR IS NOT AVAILABLE.

MACHINING DETAIL



NOTE: MOTOR ARRIVES WITH (Ø 1.377) HOLE.
 ORIENT BOX AS SHOWN BEFORE MACHINING/ASSEMBLING.


EXPLODE DETAIL



SCALE 0.250

QTY. REQ.	PART OR IDENTIFYING NO.	DESCRIPTION	ITEM NO.
1	172898	NUT, STRN RLF, PLAS, 1NPT	10
1	172843	CONNECTOR, CORD, LTF1	9
1	172777	MTR, 10HP 230/460V 3PH 1760RPM WEG 01018ET3E215T-S	8
3	172202	WIRE NUT, 4#10 (RED)	7
1	169294	TERMINAL, 22-18 X #10 RING PI	6
1	166279	CORD, 9', W/IEC60320 FEM	5
2	165108	TERMINAL, 12-10 X #10 RING PI	4
3	159968	WIRE NUT 4#16 (YELLOW)	3
1	159582	CONNECTOR, CORD, LTF11	2
1	156215_07	CORD, ELEC, 10/4 SEOWW, YELLOW (4.5 FT)	1

TOLERANCES UNLESS OTHERWISE SPECIFIED		DATE	
DIMENSIONS ARE IN INCHES		DRAWN	
WHOLE NO. AND FRACTIONS = 1/16 (EXCEPT DRILL HOLES)		CHECK	
X = ± .03		DESIGN	
XX = ± .010		NEXT ASSY.	
XXX = ± .005		<p>PROPRIETARY NOTICE: THIS DRAWING AND INFORMATION IT CONTAINS ARE THE PROPERTY OF MK DIAMOND INC. AND ARE CONSIDERED CONFIDENTIAL AND MAY NOT BE REPRODUCED, COPIED, OR USED IN PART OR IN WHOLE WITHOUT THE WRITTEN CONSENT OF MK DIAMOND PRODUCTS INC.</p>	
ANGLES = ± 1/2°		<p>SCALE: 0.450</p>	
DO NOT SCALE DRAWING		<p>APPLICATION</p>	



MK DIAMOND PRODUCTS INC.
 1315 STORM PARKWAY
 TORRANCE, CA. 90509

MK-5010T BLOCK SAW
 MTR, 10HP 230V/460V 3PH 1725RPM WEG -COMP

SIZE: **D** PART NO.: **172556-WEG** DWG. NO.: **172556-WEG** REV: **B**

REVISIONS			
ZONE	REV	DESCRIPTION	DATE