

A

B

C

D

E

F

G

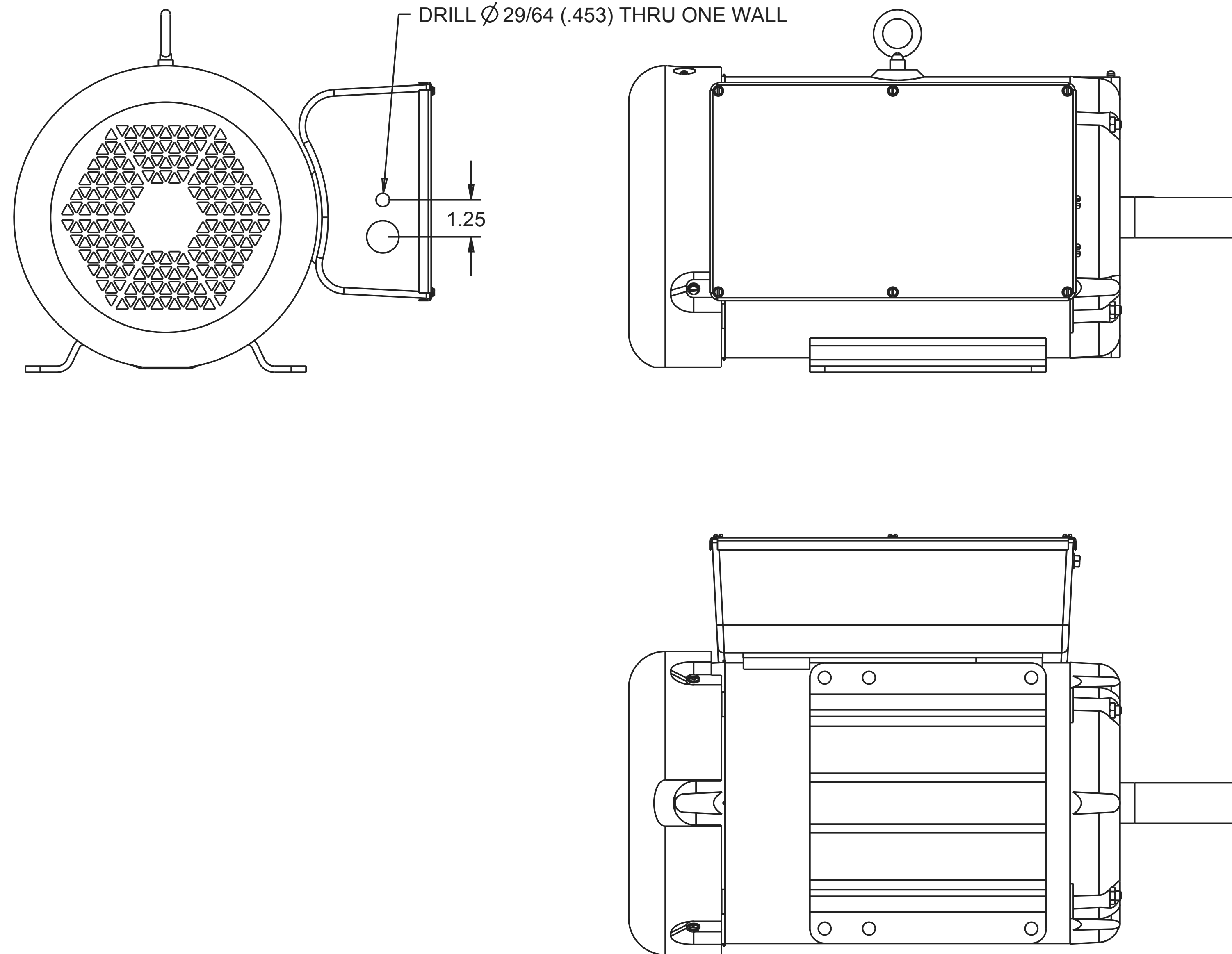
H

I

J

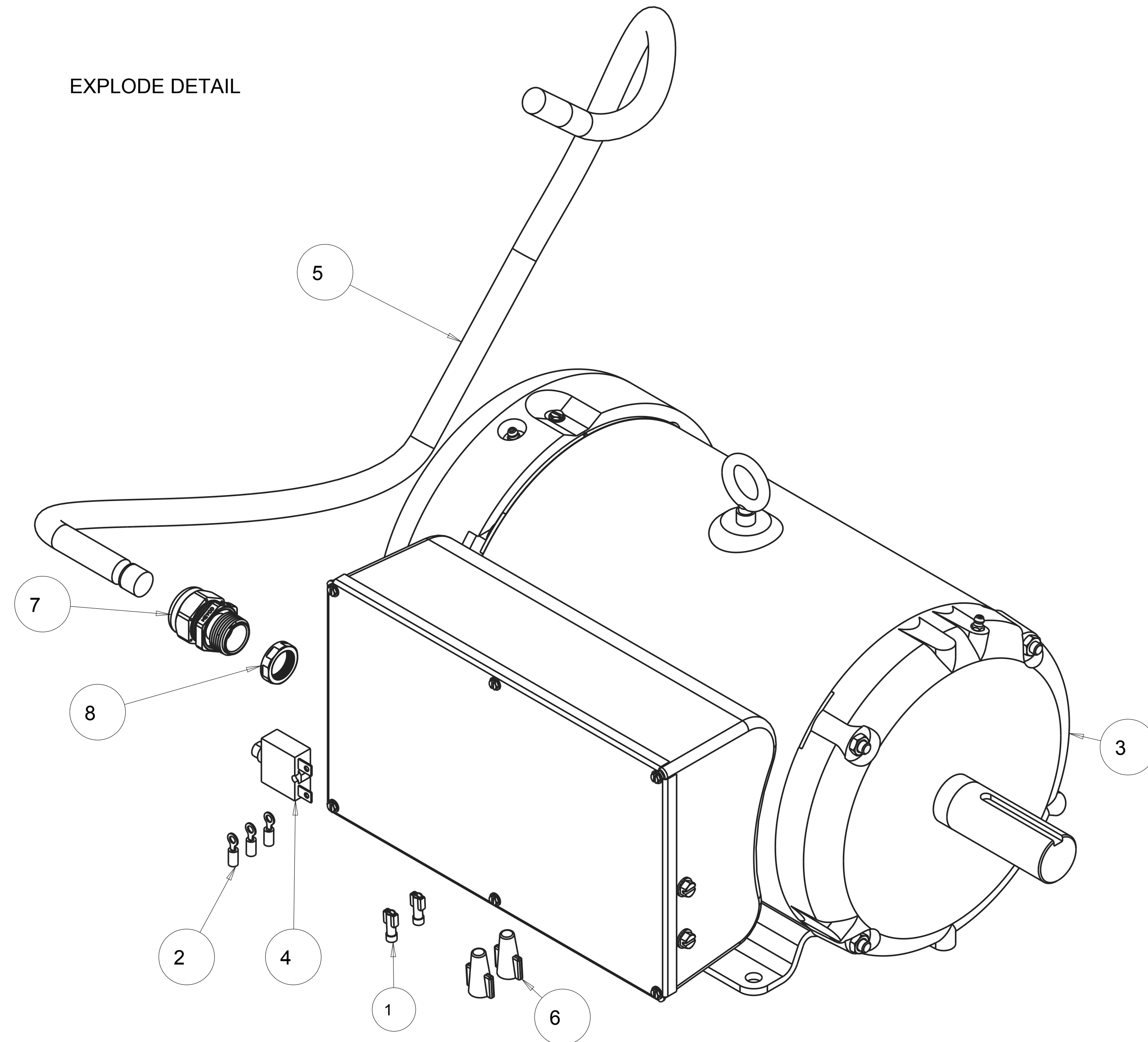
NOTES:
1. WIRING DIAGRAM FOR MK-1610B ON DRAWING 173150.

MACHINE DETAIL



SCALE 0.375

EXPLODE DETAIL



SCALE 0.500

QTY. REQ.	PART OR IDENTIFYING NO.	DESCRIPTION	ITEM NO.
1	172886	NUT, STRN RLF, PLAS, 3/4NPT	8
1	172738	CONNECTOR, CORD, LTF 3/4	7
2	172202	WIRE NUT, 4#10 (RED)	6
1	166275_05	CORD, 8/3 SOO W YELLOW, 5'	5
1	166035	SWITCH, THERMAL, O/L 240V 40A	4
1	165675	MTR, 10HP 230V 60HZ 1PH 1725RPM, L3712T	3
3	165108	TERMINAL, 12-10 X #10 RING PI	2
2	161297	TERMINAL, 12-10 X .25 QD F FI	1

PARTS LIST			
TOLERANCES UNLESS OTHERWISE SPECIFIED	DRAWN	CHECK	DATE
DIMENSIONS ARE IN INCHES	CLO	SMH	10/26/21
WHOLE NO. AND FRACTIONS = 1/16 (EXCEPT DRILL HOLES)	DESIGN	CLO	10/26/21
X = ±.03	NEXT ASSY. 173150		
XX = ±.010	PROPRIETARY NOTICE: THIS DRAWING AND INFORMATION IT CONTAINS ARE THE PROPERTY OF MK DIAMOND INC. AND ARE CONSIDERED CONFIDENTIAL AND MAY NOT BE REPRODUCED, COPIED, OR USED IN PART OR IN WHOLE WITHOUT THE WRITTEN CONSENT OF MK DIAMOND PRODUCTS INC.		
XXX = ±.005	SIZE	PART NO.	REV.
ANGLES = ±1/2°	D	172555	A

MK MK DIAMOND PRODUCTS INC.
1315 STORM PARKWAY
TORRANCE, CA. 90509

**MK-1610 CONCRETE SAW
ASSY, MTR, 10HP 230V 60HZ 1PH
1725RPM -COMP**

DO NOT SCALE DRAWING	APPLICATION	SCALE: 1:000	SHEET: 1 of 1

REVISIONS				
ZONE	REV.	DESCRIPTION	DATE	APPROVED
-	-	INITIAL RELEASE, ECO #2346	11/21/17	SSH
-	A	ADDED PARTS PLUS THERMAL SWITCH HOLE, ECO #2545	10/22/21	CLO