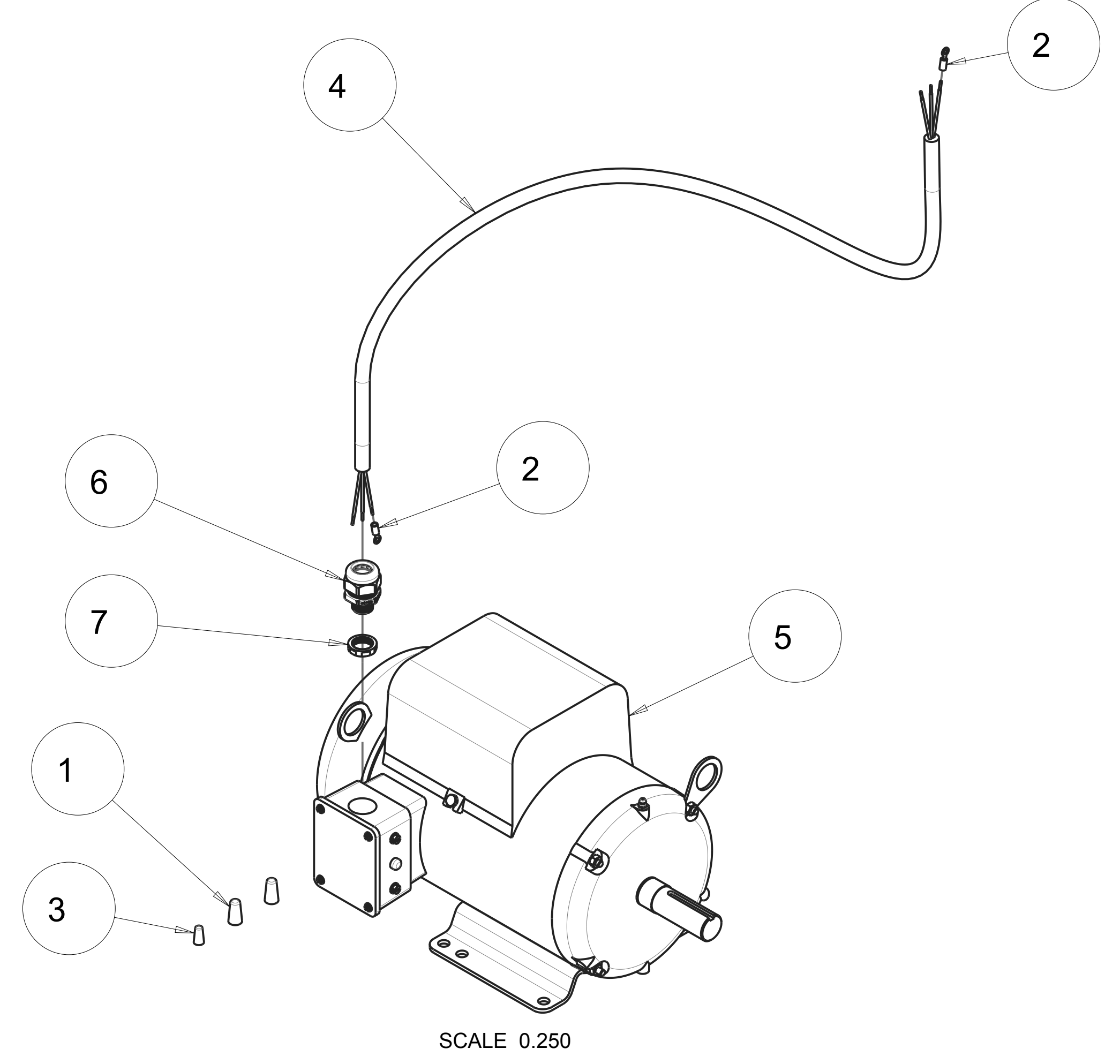
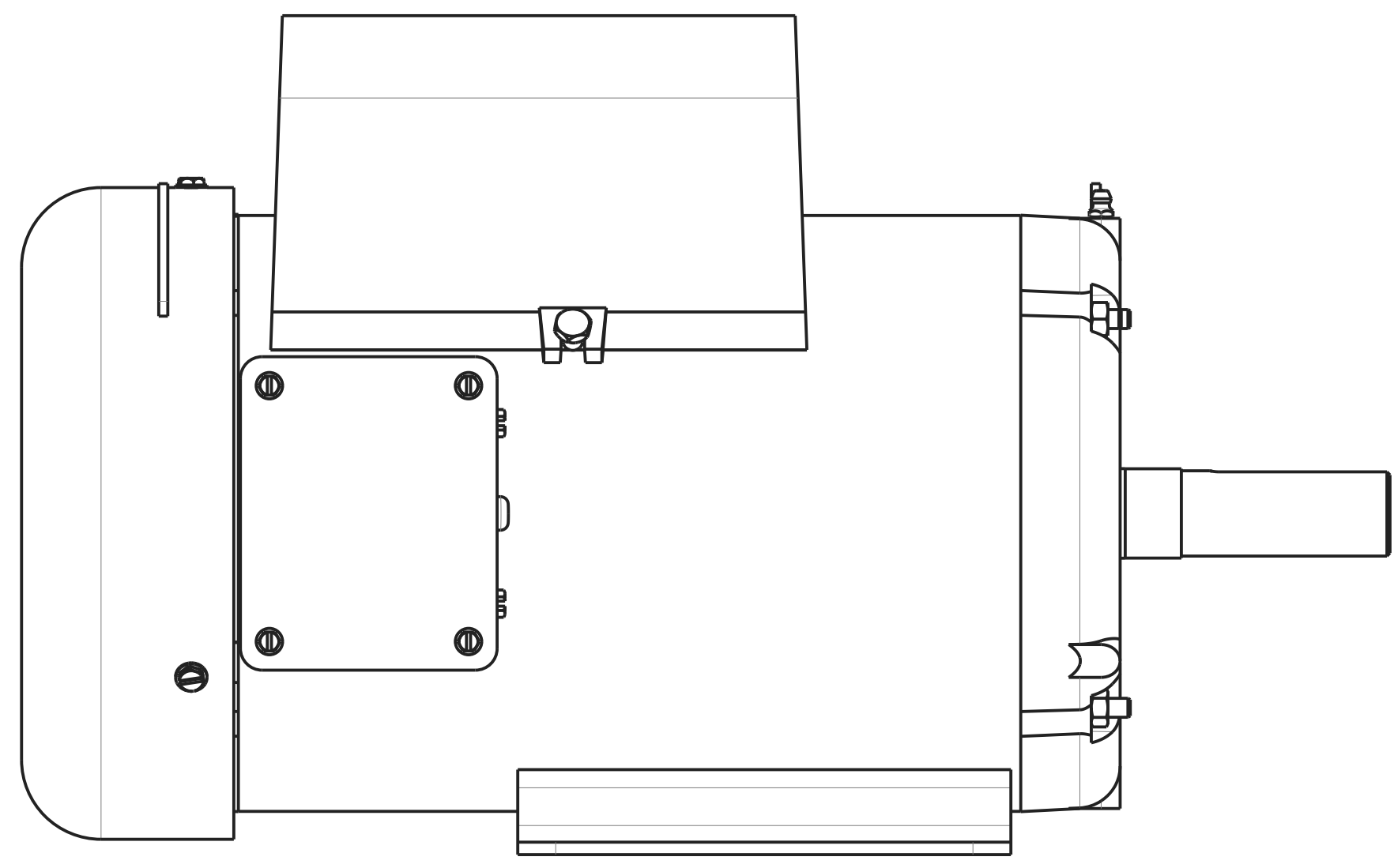
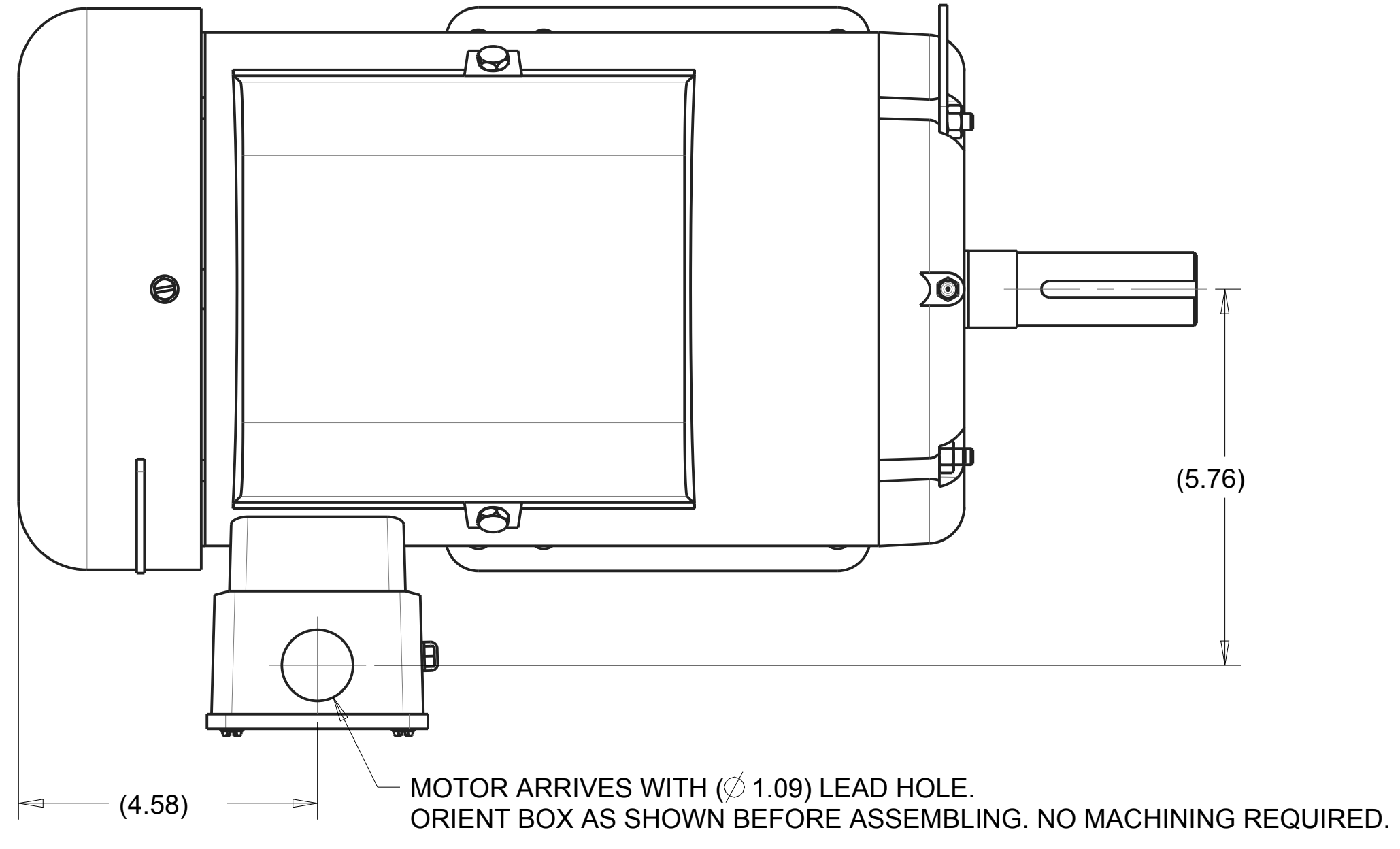


REVISIONS				
ZONE	REV	DESCRIPTION	DATE	APPROVED
-	-	INITIAL RELEASE, ECO# 2296	06/28/17	SSH
-	A	ADD -WEG VERSION, ECO# 2477	02/28/20	SSH

EXPLODE



QTY. REQ.	PART OR IDENTIFYING NO.	DESCRIPTION	ITEM NO.
1	172886	NUT, STRN RLF, PLAS, 3/4NPT	7
1	172738	CONNECTOR, CORD, LTF 3/4	6
1	172414-RW	MTR, 5HP, 230V, 1PH, 3450RPM, L3608TM	5
1	171227_03	CORD, ELEC, 10/3 SJOOW, BLACK (4FT)	4
1	170637	WIRE NUT 4/#16 (ORANGE)	3
2	165108	TERMINAL, 12-10 X #10 RING PI	2
2	159968	WIRE NUT 4/#16 (YELLOW)	1

TOLERANCES UNLESS OTHERWISE SPECIFIED		DATE	
DRAWN	SSH	06/28/17	
CHECK	-	-	
DESIGN	SSH	06/28/17	

WHOLE NO. AND FRACTIONS = 1/16 (EXCEPT DRILL HOLES)

X = ± .03
XX = ± .010
XXX = ± .005
ANGLES = ± 1/2°

DO NOT SCALE DRAWING

APPLICATION

SCALE: 0.500

SHEET: 1 of 2

MK MK DIAMOND PRODUCTS INC.
1315 STORM PARKWAY
TORRANCE, CA. 90509

MK-1605 CONCRETE SAW
MTR, 5HP, 230V, 1PH, 3450RPM -COMP

PROPRIETARY NOTICE: THIS DRAWING AND INFORMATION IT CONTAINS ARE THE PROPERTY OF MK DIAMOND INC. AND ARE CONSIDERED CONFIDENTIAL AND MAY NOT BE REPRODUCED, COPIED, OR USED IN PART OR IN WHOLE WITHOUT THE WRITTEN CONSENT OF MK DIAMOND PRODUCTS INC.

NEXT ASSY: 172431

SIZE: **D** PART NO. 172414 DWG. NO. 172414 REV. **A**

A

B

C

D

E

F

G

H

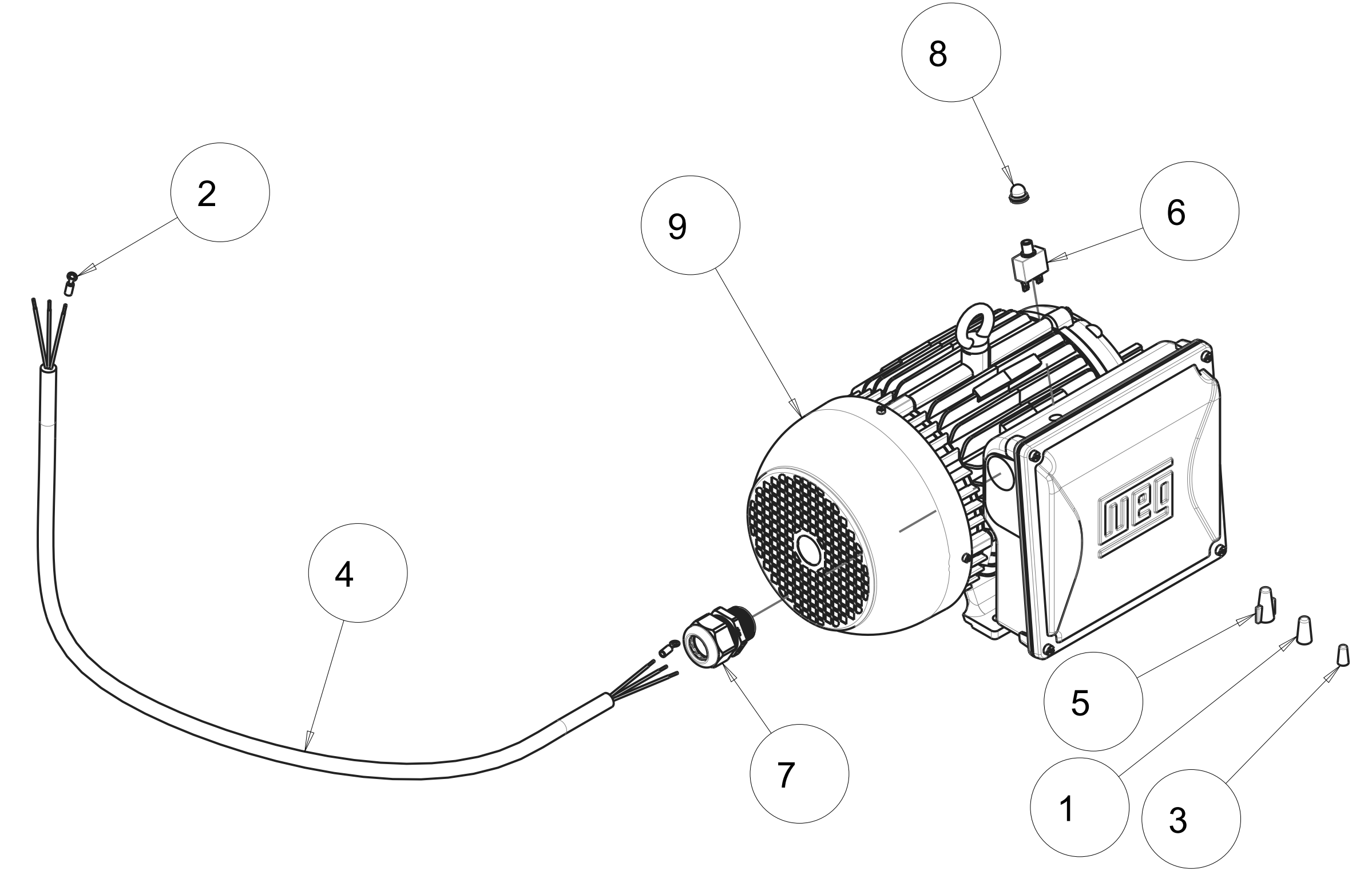
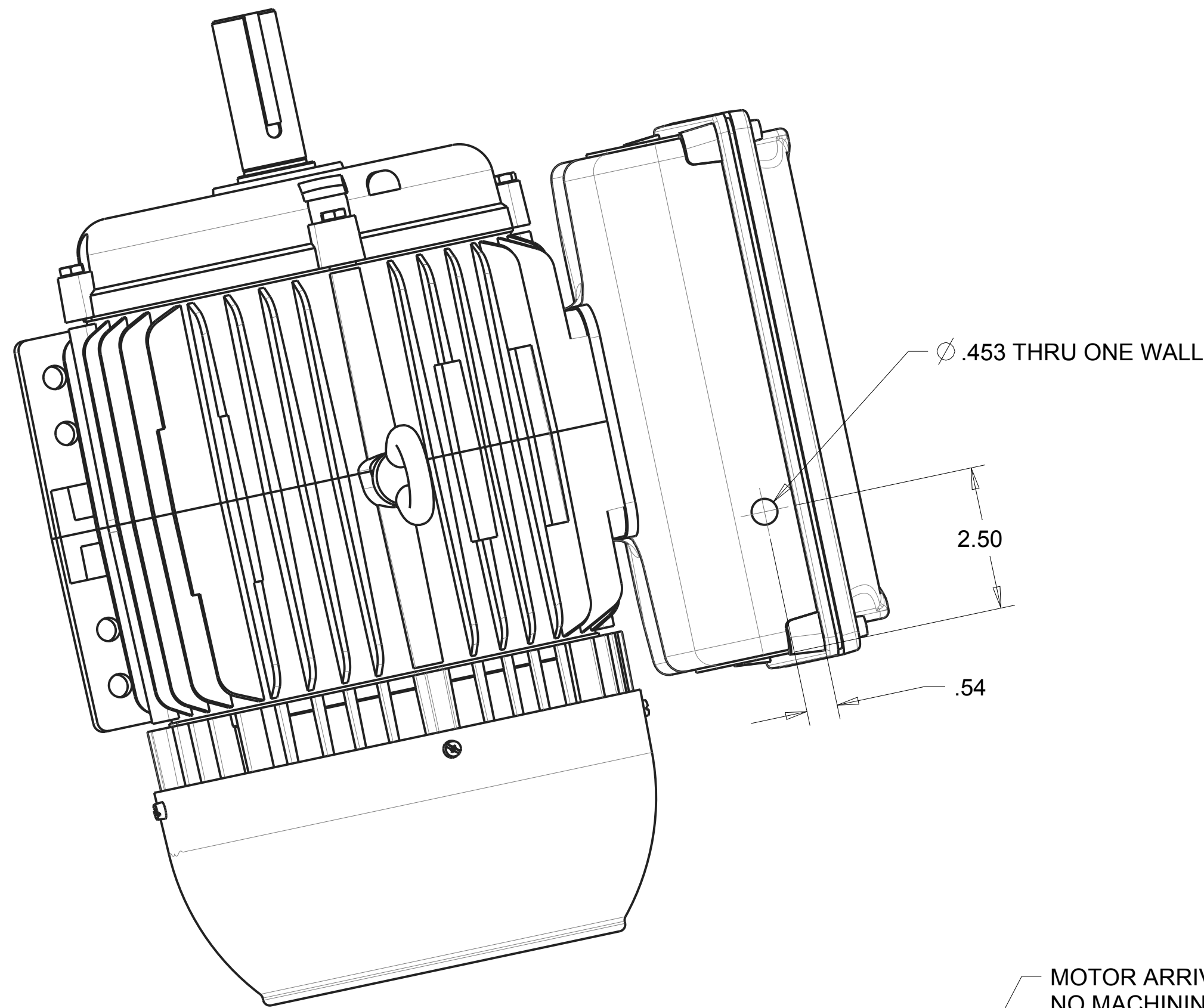
I

J

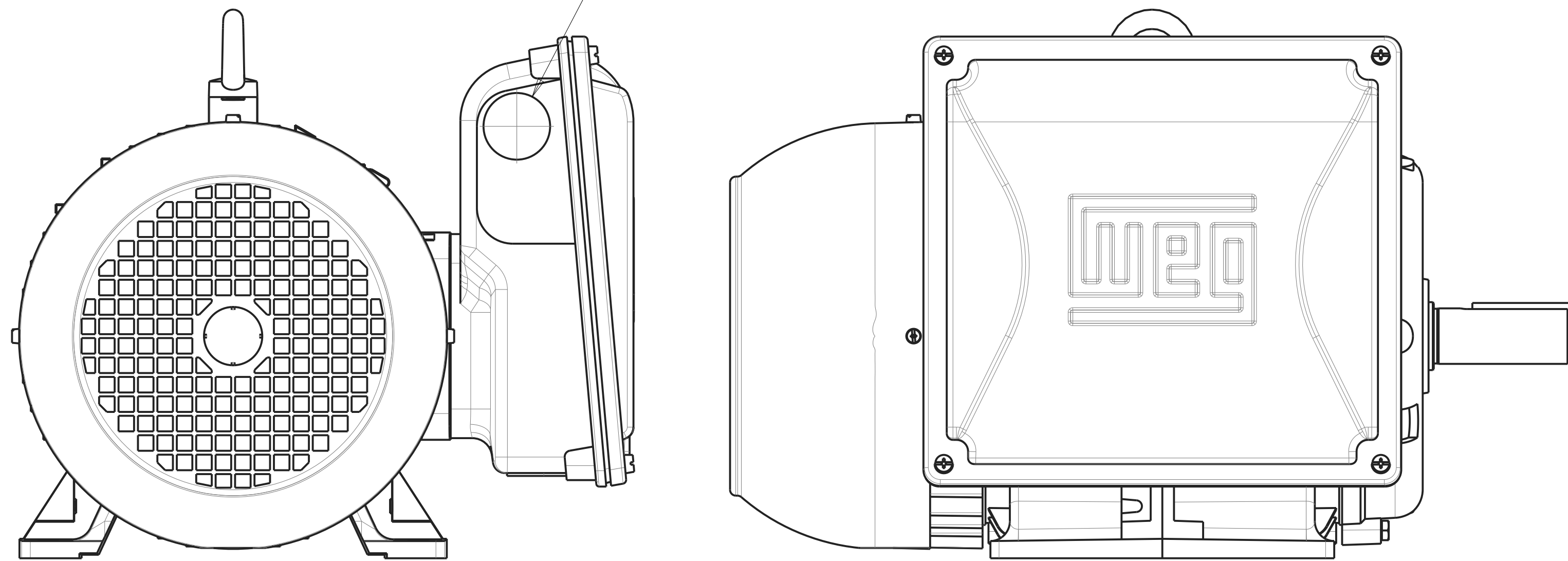
MACHINING DETAIL

EXPLODE

REVISIONS				
ZONE	REV.	DESCRIPTION	DATE	APPROVED



SCALE 0.250



QTY. REQ.	PART OR IDENTIFYING NO.	DESCRIPTION	ITEM NO.
1	172924	MTR, 5HP, 208-230/460V 1PH 3515RPM WEG 00536ES1E184T-W22	9
1	172910	BOOT, THERMAL SWITCH, M11	8
1	172843	CONNECTOR, CORD, LTF1	7
1	172780	SWITCH, THERMAL 20A	6
1	172202	WIRE NUT, 4#10 (RED)	5
1	171227_13	CORD, ELEC, 10/3 SJOOW, BLACK (4FT)	4
1	170637	WIRE NUT 4/#16 (ORANGE)	3
2	165108	TERMINAL, 12-10 X #10 RING PI	2
1	159968	WIRE NUT 4#16 (YELLOW)	1

TOLERANCES UNLESS OTHERWISE SPECIFIED		DATE		 MK DIAMOND PRODUCTS INC. 1315 STORM PARKWAY TORRANCE, CA. 90509
DIMENSIONS ARE IN INCHES		DRAWN		
WHOLE NO. AND FRACTIONS = 1/16 (EXCEPT DRILL HOLES)		CHECK		
X = ±.03		DESIGN		
XX = ±.010		NEXT ASSY. 172431-WEG		
XXX = ±.005		<small>PROPRIETARY NOTICE: THIS DRAWING AND INFORMATION IT CONTAINS ARE THE PROPERTY OF MK DIAMOND INC. AND ARE CONSIDERED CONFIDENTIAL AND MAY NOT BE REPRODUCED, COPIED, OR USED IN PART OR IN WHOLE WITHOUT THE WRITTEN CONSENT OF MK DIAMOND PRODUCTS INC.</small>		
ANGLES = ±1/2°		SIZE	PART NO.	DWG. NO.
DO NOT SCALE DRAWING		D	172414-WEG	172414-WEG
APPLICATION		SCALE: 0.500	REV.	A
SHEET: 2 of 2				