

MK Diamond Products, Inc.
 1315 Storm Parkway
 Torrance, CA 90509-2803

SPECIFICATION SHEET		Date 10/25/12
MK Part Number 169556	MK Description MTR, 1/3HP, 60HZ, 1800RPM	Revision -
Manufacturer P/N G7-0419-0389G1	Manufacturer/Vendor Description 20C 4P BUFFER	
Manufacturer Information BALDOR ELECTRIC CO FORT SMITH, AR	Vendor Information 002520 POWER REPS, INC. COMMERCE, CA	Alternate Manufacturer NONE

Specifications:



SEE ATTACHED PAGES

Rev	Description	Date	Approved
-	INITIAL RELEASE, ECO# 2024	10/25/12	SMH



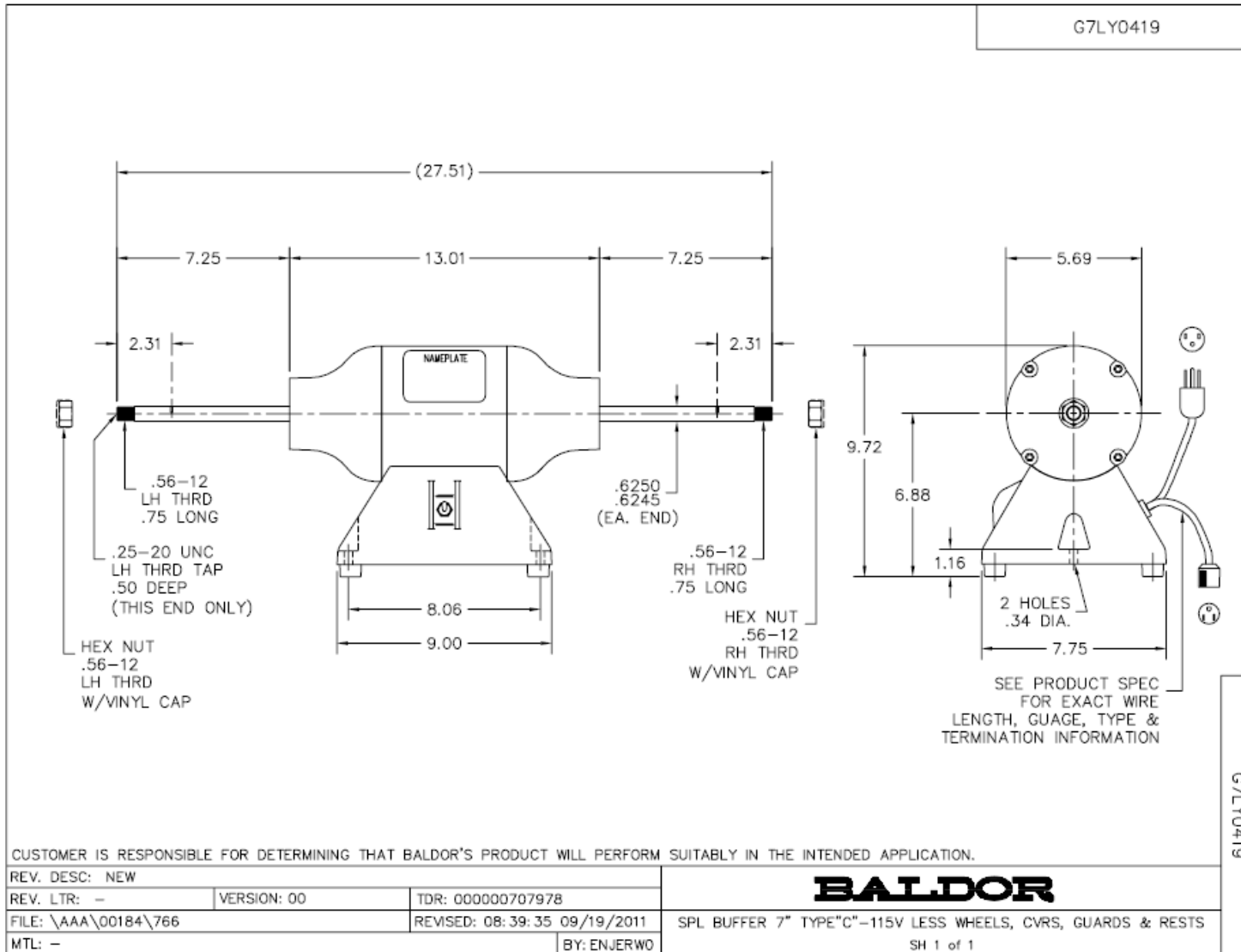
BALDOR • *RELIANCE* 

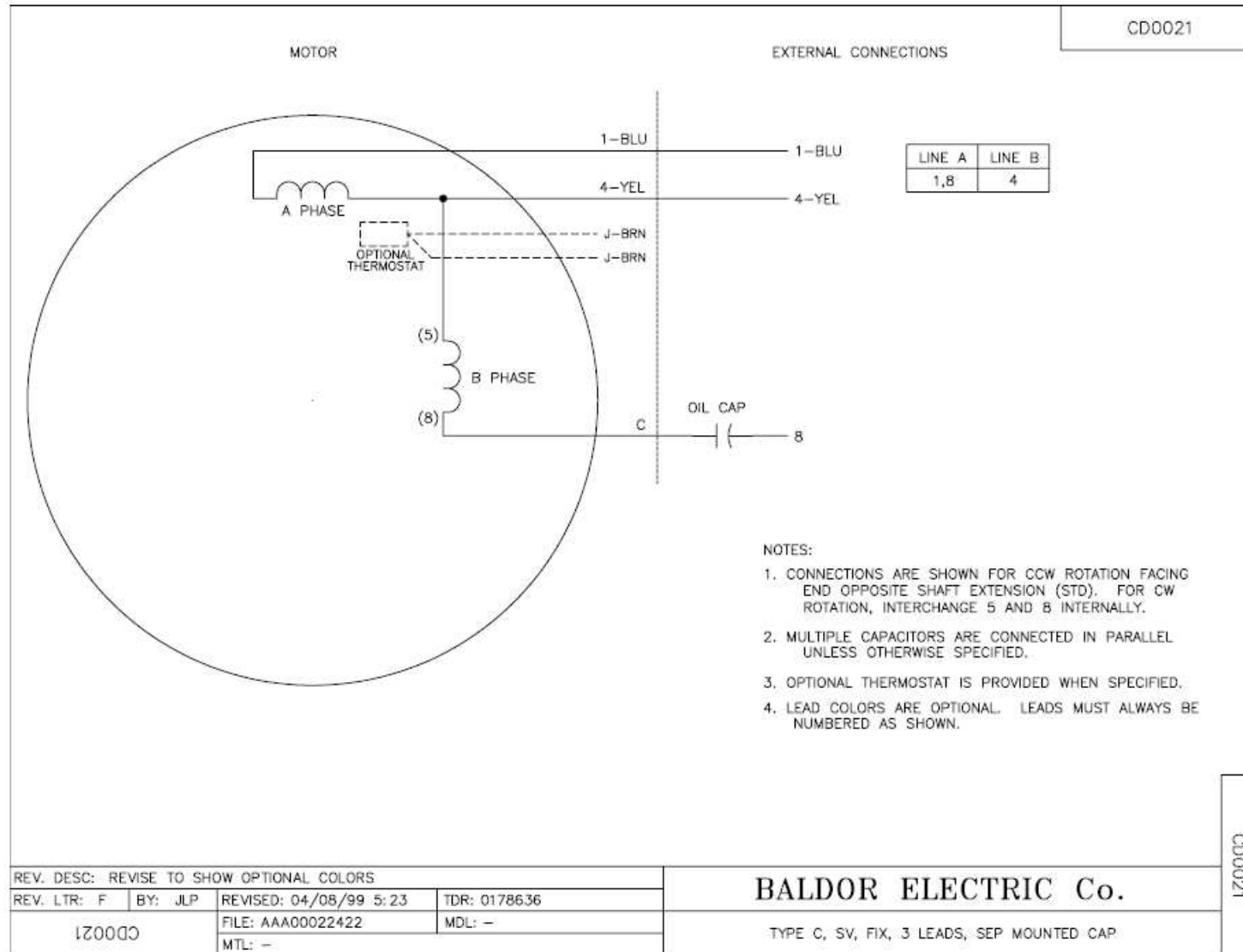
Product Information Packet

G7-0419-0389G1

20C 4P BUFFER

Part Detail							
Revision:	C	Status:	PRD/A	Change #:		Proprietary:	Yes
Type:	AC	Prod. Type:	3420C	Elec. Spec:	G7WG0389	CD Diagram:	
Enclosure:	TENV	Mfg Plant:		Mech. Spec:	G7-0419	Layout:	
Frame:		Mounting:	F1	Poles:	04	Created Date:	08-24-2011
Base:	RG	Rotation:	FOS	Insulation:	B	Eff. Date:	08-03-2012
Leads:	3#18	Literature:		Elec. Diagram:		Replaced By:	
Nameplate NP0234							
CAT.NO.	169556						
HP	.33					VOLTS	115
PHASE	1					AMPS	3.6
HZ	60					RPM	1800
SER.NO							
SPEC.	G7-0419-0389G1						





CD0021

CD0021

REV. DESC: REVISE TO SHOW OPTIONAL COLORS			
REV. LTR: F	BY: JLP	REVISED: 04/08/99 5:23	TDR: 0178636
1Z0000	FILE: AAA00022422	MDL: -	
	MTL: -		

BALDOR ELECTRIC Co.

TYPE C, SV, FIX, 3 LEADS, SEP MOUNTED CAP