

MK Diamond Products, Inc.
 1315 Storm Parkway
 Torrance, CA 90509-2803

SPECIFICATION SHEET			Date 12/13/19
MK Part Number 168022GW	MK Description MTR, 1.5HP 115/208-230V 1PH 3500RPM WEG 00156ES1B56C-S	Revision -	
Manufacturer/Supplier P/N 00156ES1B56C-S	Manufacturer/Vendor Description Rolled Steel 1.5 HP 2P 56C 1Ph 115/208-230 V 60 Hz - TEFC - Foot-mounted		
Manufacturer Information WEG INDUSTRIES JARAGUA DO SUL, BRAZIL	Supplier Information HILL HOUSE PRODUCTS SAN CLEMENTE, CA	Alternate Manufacturer	

Specifications:



REPLACEMENT PARTS:
 THERMAL SWITCH: 172935

Rev	Description	Date	Approved
-	INITIAL RELEASE, ECO# 2467	12/13/19	SSH

DATA SHEET



Single Phase Induction Motor - Squirrel Cage

Customer :				
Product line : Rolled Steel Single-Phase		Product code : 13309029		
		Catalog # : 00156ES1B56C-S		
Frame	: 56C	Locked rotor time	: 12s (cold) 7s (hot)	
Output	: 1.5 HP (1.1 kW)	Temperature rise	: 80 K	
Poles	: 2	Duty cycle	: Cont.(S1)	
Frequency	: 60 Hz	Ambient temperature	: -20°C to +40°C	
Rated voltage	: 115/208-230 V	Altitude	: 1000 m.a.s.l.	
Rated current	: 13.2/7.30-8.60 A	Protection degree	: IP55	
L. R. Amperes	: 106/58.4-52.8 A	Cooling method	: IC411 - TEFC	
LRC	: 8.0x(Code K)	Mounting	: F-1	
No load current	: 4.60/1.98-2.30 A	Rotation ¹	: Both (CW and CCW)	
Rated speed	: 3500 rpm	Noise level ²	: 68.0 dB(A)	
Slip	: 2.78 %	Starting method	: Direct On Line	
Rated torque	: 0.307 kgfm	Approx. weight ³	: 16.6 kg	
Locked rotor torque	: 240 %			
Breakdown torque	: 250 %			
Insulation class	: F			
Service factor	: 1.15			
Moment of inertia (J)	: 0.0025 kgm ²			
Design	: L			
Output	50%	75%	100%	Foundation loads
Efficiency (%)	88.0	73.0	75.0	Max. traction : 16 kgf
Power Factor	0.92	0.95	0.97	Max. compression : 33 kgf
Bearing type	:	<u>Drive end</u> 6204 ZZ	<u>Non drive end</u> 6202 ZZ	
Sealing	:	V'Ring	V'Ring	
Lubrication interval	:	-	-	
Lubricant amount	:	-	-	
Lubricant type	:	Mobil Polyrex EM		
Notes				
This revision replaces and cancel the previous one, which must be eliminated.				
(1) Looking the motor from the shaft end.				
(2) Measured at 1m and with tolerance of +3dB(A).				
(3) Approximate weight subject to changes after manufacturing process.				
(4) At 100% of full load.				
These are average values based on tests with sinusoidal power supply, subject to the tolerances stipulated in NEMA MG-1.				
Rev.	Changes Summary			Date
Performed by				Page
Checked by				Revision
Date	13/12/2019			1 / 2

LOAD PERFORMANCE CURVE



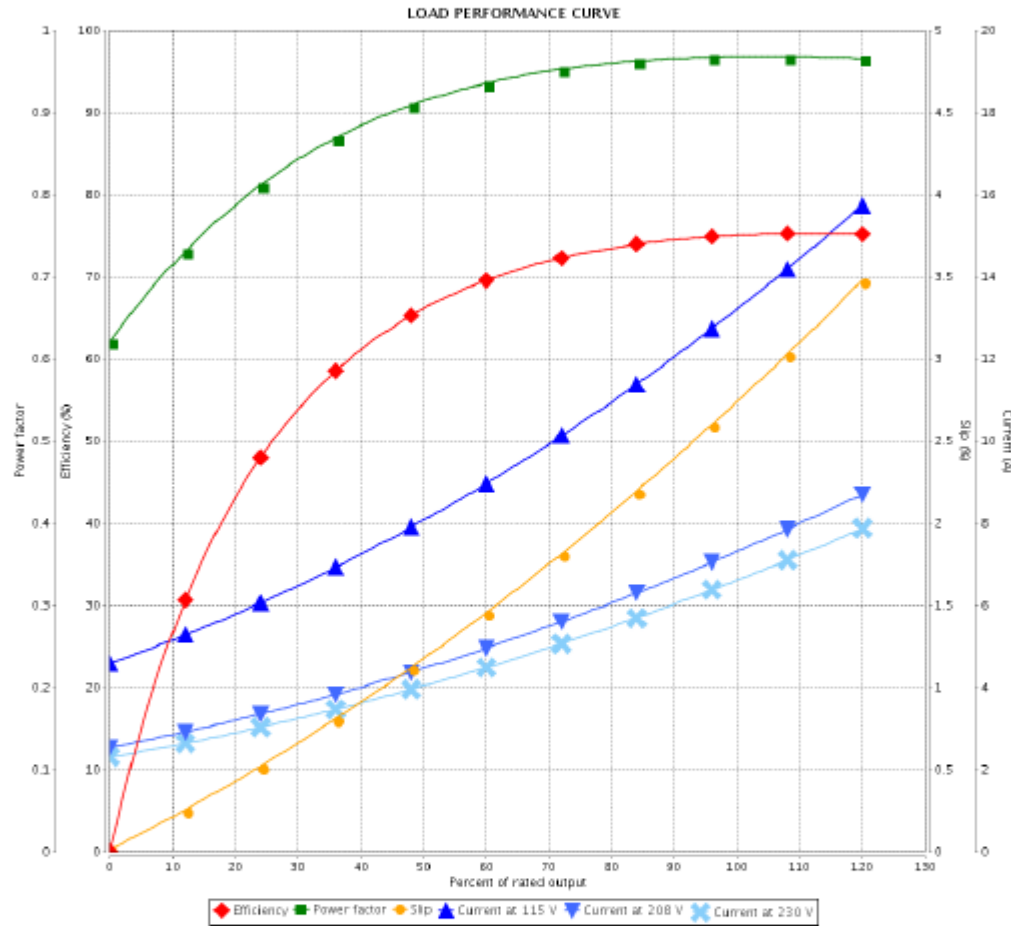
Single Phase Induction Motor - Squirrel Cage

Customer : _____

Product line : Rolled Steel Single-Phase

Product code : 13309029

Catalog # : 00156ES1B56C-S



Performance : 115/208-230 V 60 Hz 2P

Rated current : 13.2/7.30-8.60 A
 LRC : 8.0
 Rated torque : 0.307 kgfm
 Locked rotor torque : 240 %
 Breakdown torque : 250 %
 Rated speed : 3500 rpm

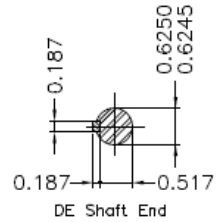
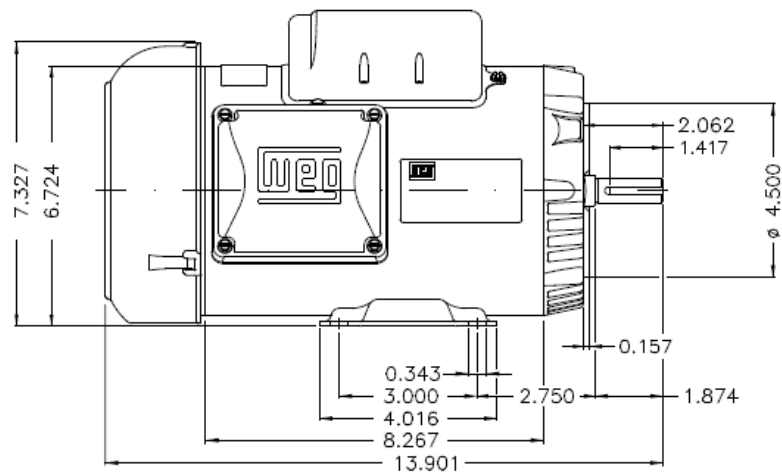
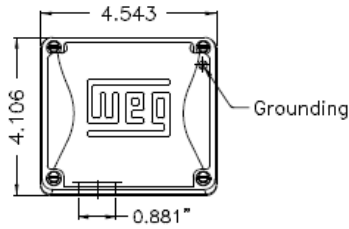
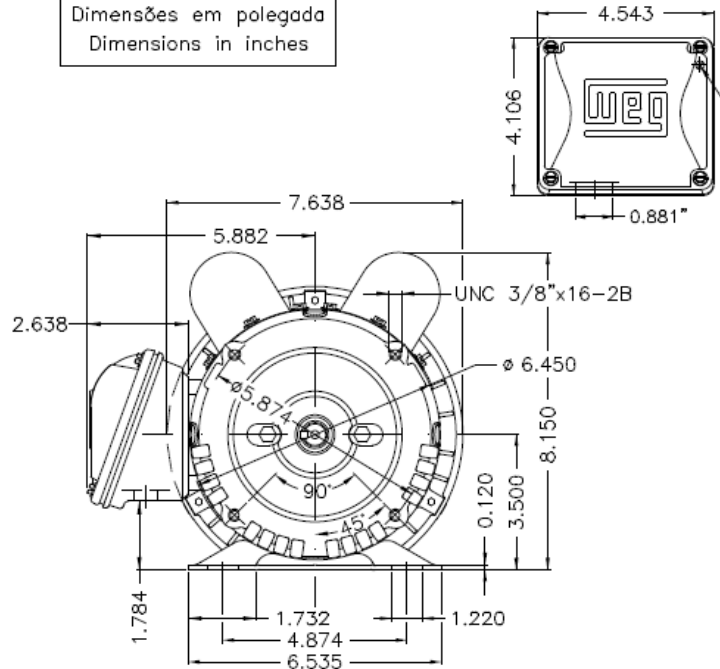
Moment of inertia (J) : 0.0025 kgm²
 Duty cycle : Cont.(S1)
 Insulation class : F
 Service factor :
 Temperature rise : 80 K
 Design : L

Rev.	Changes Summary	Performed	Checked	Date
Performed by			Page	Revision
Checked by			2 / 2	
Date	13/12/2019			

This document is exclusive property of WEG S/A. Reprinting is not allowed without written authorization of WEG S/A. Subject to change without notice

Dimensões em polegada
Dimensions in inches

THIS IS AN UPDATED REVISION, THE
PREVIOUS ONE MUST BE DISREGARDED.



Color Munsell N 1 matte black											
Painting plan 207N											
Mounting F-1/B34R(D)											
ECM	LOC	SUMMARY OF MODIFICATIONS					EXECUTED	CHECKED	RELEASED	DATE	VER
EXECUTED	USERADMIN	SINGLE PHASE MOTOR CLOSED ROLLED STEEL									
CHECKED		FRAME 58C IP55 TEFC									
RELEASED		WEG code: 13309029									
REL DT	13.12.2019	WMO	Jaraguá do Sul	Product Engineering	SHEET		1 / 1				

1.5 HP 02 Poles 60Hz

WEG's property. Forbidden reproduction without previous authorization.



ZME AS