

BALDOR

BALDOR® • RELIANCE

Part Information Packet

MK DIAMOND PRODUCTS

36K686-2895G1

5 SAW DUTYHP,3450RPM,1PH,60HZ,182TC,3634

Part Detail							
Revision:	H	Status:	PRD/A	Change #:		Proprietary:	Yes
Type:	AC	Prod. Type:	3634L	Elec. Spec:	36WG2895	CD Diagram:	
Enclosure:	TEFC	Mfg Plant:		Mech. Spec:	36K686	Layout:	
Frame:	182TC	Mounting:	F1	Poles:	02	Created Date:	
Base:	N	Rotation:	ROS	Insulation:	B	Eff. Date:	06-11-2008
Leads:	4#10,2#16 ACCESSORIES	Signature:	Y	Elec. Diagram:		Replaced By:	

Nameplate NP1308L

CAT.NO.							
SPEC.	36K686-2895G1						
HP	5 SAW DUTY						
VOLTS	230						
AMP	23						
RPM	3450						
FRAME	182TC	HZ	60	PH	1		
SER.F.	1.15	CODE	F	DES	L	CLASS	B
NEMA-NOM-EFF			PF				
RATING	40C AMB-CONT						
CC			USABLE AT 208V				
DE	6206	ODE	6205				
ENCL	TEFC	SN					
	160197						

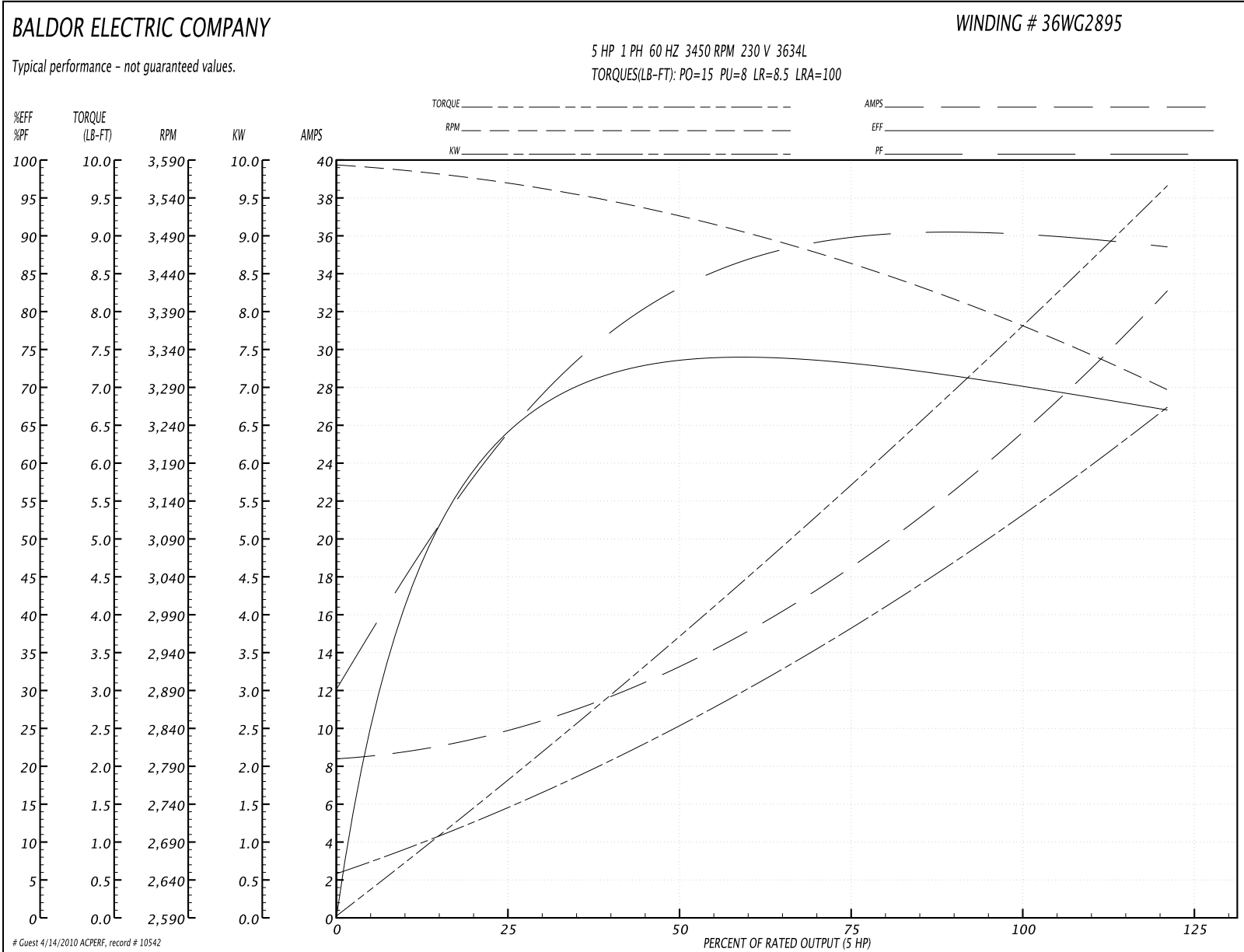
Parts List		
Part Number	Description	Quantity
SA101926	SA 36K686-2895G1	1.000 EA
RA093938	RA 36K686-2895G1	1.000 EA
TPBET36DB	THERMAL 1PH 1.25 MAN 120	1.000 EA
EC1850A06SP	ELEC CAP 115V 2.0 X 4.3 X	1.000 EA
TP5059	GENERIC THERMAL KIT	1.000 EA
11XW1032G06	10-32 X .38, TAPTITE II, HEX WSHR SLTD U	1.000 EA
HW3001B01	BRASS CUP WASHER, FOR #8 SCREW	1.000 EA
51XB1214A20	12-14X1.25 HXWSSLD SERTYB	2.000 EA
RM1015	BOOT FOR MANUAL THERMALS	1.000 EA
36EP3104A01	FREP MACH W/GRSR, RAISED FH PADS	1.000 EA
HW4500A01	1641B(ALEMITE)400 UNIV, GREASE FITT	2.000 EA
13XT0832A07	8-32X7/16 TYP 23 PAN HD SLT DX	2.000 EA
LD6013A13	CORD, TYPE SO, 12-4, 60"	1.000 EA
LD6012A22	CORD, TYPE SO, 12-3, 46" LONG (ML6000D10	1.000 EA
WD4500A08	CORD CONN, .75 NPS, .530-.750 CORD DIA.	1.000 EA
WD4500A07	CORD CONN, .75 NPT, .625-.750 CORD DIA.	1.000 EA
WD1400A09	PLUG, L6-30P, 250V, .36"-.93" CORD DIA.	1.000 EA
WD4500A01	CORD CONN, .50 NPS, .250-.590 CORD DIA.	1.000 EA
WD4504A12A01	SWITCH BOX, MACHINED #FSA-2 (CROUSE HIND	1.000 EA
WD4505A01	LID-DS185 LID C H SWITCH BOX USE W/WD450	1.000 EA
SP9009SP	ON-OFF SWITCH 681OU A-H, P&S # 7842	1.000 EA
36GS3009	GASKET, CAPAC COVER	1.000 EA
36CB2803A04P	36 CAP BOX (MK DIAM) 1.25 THERMAL (PAINT	1.000 EA
HA6003A06	CLAMP, CAPACITOR PLATED	1.000 EA

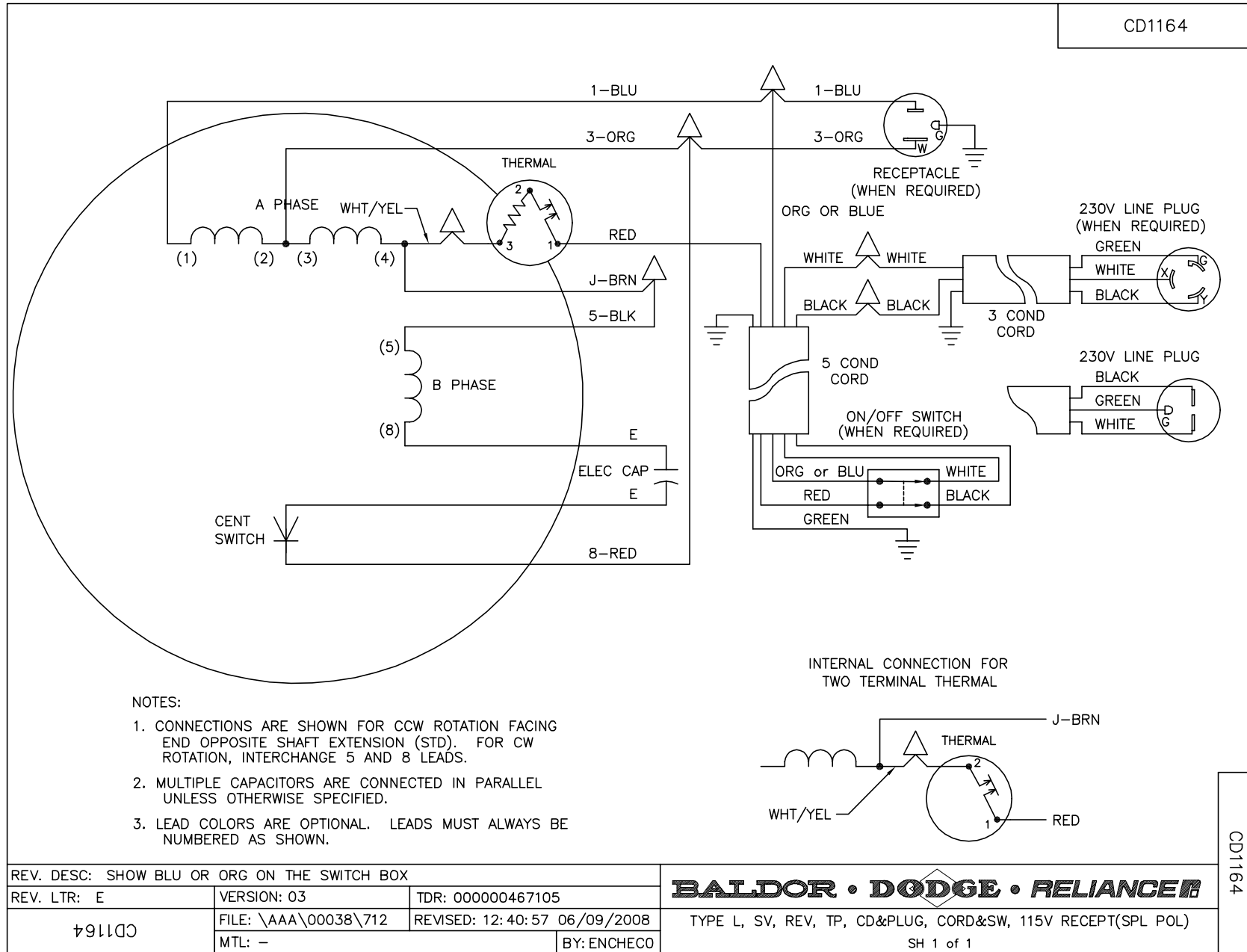
Parts List (continued)		
Part Number	Description	Quantity
51XN1032A10	10-32 X 0.625 HX WS SL SR ZN	1.000 EA
XY1032A02	10-32 HEX NUT DIRECTIONAL SERRATION	1.000 EA
HW1001A10	WASHER, #10 SPLT LK, ZN X	1.000 EA
51XB1016A07	10-16 X 7/16 HXWSSLD SERTYB	2.000 EA
HW5100A05	WVY WSHR F/205 & 304 BRGS	1.000 EA
36EP3301A23	PU ENDPLATE, ENCL. 182-4TC 206 BRG. W/GR	1.000 EA
HW4500A01	1641B(ALEMITE)400 UNIV, GREASE FITT	1.000 EA
10XN2520A28	1/4-20X 1 3/4 HEX HD	4.000 EA
HW1001A25	LOCKWASHER 1/4, ZINC PLT .493 OD, .255 I	4.000 EA
36FH4009A102SP	IEC FH GREASER W/AUTOPHERETIC PRIMER	1.000 EA
51XW1032A06	10-32 X .38, TAPTITE II, HEX WSHR SLTD S	3.000 EA
HW2501E16	KEY, 1/4 SQ X 1.750	1.000 EA
HA7000A02	KEY RETAINER RING, 1 1/8 DIA, 1 3/8 DIA	1.000 EA
10XF0440S02	04-40 X 1/8 TYPE F HEX HD STAINLESS STIC	2.000 EA
LB1009	\ABEL,ROTATION DIRECTION (ON ROLLS)	1.000 EA
LB1087	LABEL,MANUAL RESET (ROLL LABEL)	1.000 EA
HA2001A07	SPACER, .218 ID X .750 LG	2.000 EA
WD1000A15	3-520132-2 AMP FLAG (4M/RL NON-CANC/NON-	2.000 EA
MJ1000A02	GREASE, POLYREX EM EXXON	0.050 LB
36FN3000A01SP	EXFN, PLASTIC, 7.00 OD, .912 ID	1.000 EA
51XN1032A16	10-32 X 1.000 HX WS SL SR	1.000 EA
MG1025N02	PAINT- 788-02 WILKOFAS MK DIAMOND GREEN	0.022 GA
HA3101A25	THRUBOLT 1/4-20 X 11.000 OHIO ROD	4.000 EA
SP5061A46	MODEL 36 TYPE L STAT SWITCH LEAD ASSEMBL	1.000 EA

Parts List (continued)		
Part Number	Description	Quantity
LB1119	WARNING LABEL	1.000 EA
LB1172A01	CUSTOM MTR CARTON LABEL LASER PRINTER	1.000 EA
NP1308L	NAMEPLATE "MK DIAMOND" UL,CSA	1.000 EA
36PA1001	PACKAGING GROUP	1.000 EA
PK3082	STYROFOAM CRADLE	1.000 EA

Performance Data at 230V, 60Hz, 5.0HP (Typical performance - Not guaranteed values)							
General Characteristics							
Full Load Torque:	7.76 LB-FT			Start Configuration:	DOL		
No-Load Current:	8.2 Amps			Break-Down Torque:	15.0 LB-FT		
Line-line Res. @ 25°C.:	0.652 Ohms A Ph / 0.375 Ohms B Ph			Pull-Up Torque:	8.0 LB-FT		
Temp. Rise @ Rated Load:	80 C			Locked-Rotor Torque:	8.5 LB-FT		
Temp. Rise @ S.F. Load:	95 C			Starting Current:	100.0 Amps		
Load Characteristics							
% of Rated Load	25	50	75	100	125	150	S.F.
Power Factor:	64.0	81.0	88.0	91.0	91.0	0.0	0.0
Efficiency:	62.1	72.2	73.8	71.7	66.2	0.0	0.0
Speed:	3551.0	3506.0	3453.0	3384.0	3278.0	0.0	0.0
Line Amperes:	10.2	13.9	18.8	25.0	33.5	0.0	30.1

Performance Graph at 230V, 60Hz, 5.0HP Typical performance - Not guaranteed values





REV. DESC: SHOW BLU OR ORG ON THE SWITCH BOX		
REV. LTR: E	VERSION: 03	TDR: 000000467105
CD1164	FILE: \AAA\00038\712	REVISED: 12:40:57 06/09/2008
	MTL: -	BY: ENCHECO

BALDOR • DODGE • RELIANCE

TYPE L, SV, REV, TP, CD&PLUG, CORD&SW, 115V RECEPT(SPL POL)

SH 1 of 1

CD1164

