

MK Diamond Products, Inc.
 1315 Storm Parkway
 Torrance, CA 90509-2803

SPECIFICATION SHEET			Date 9/21/2005
MK Part Number 155350	MK Description Motor, 1-1/2 HP, 220-230V/50Hz	Revision B	
Manufacturer P/N 34K363Y984G1	Manufacturer Description Same as above		
Manufacturer/Vendor Information Baldor		Alternate Manufacturer Or Equivalent	
<p>Specifications:</p> <p style="margin-left: 40px;">Voltage: 220-230 V Frequency: 50 Hz Current: 6.4-6.3 Amp PH: 1 RPM: 2850 Frame: 56YZ Service Factor: 1; Code: H; Des: -; Class: F Nema Nom Eff: 75.5%; PF: 99% Rating: 40C Amb-cont Bearing: DE:6203; ODE:6203 Encl: TEFC S/N: M0507261105</p> <p style="margin-left: 40px;"><u>No Logo Version</u> 155350-NL MTR, 1-1/2HP 220/230V NO LOGO Item Type 2, Planner - 90000 BOM contains only 1ea 155350 Belt Sand to Remove MK Logo and Repaint Capacitor Housing.</p>			
Rev	Description	Date	Approved
A	Create Spec Sheet, ECO#1213	9/21/05	ST
B	ADD -NL VERSION, ECO# 2020	12/20/12	SMH



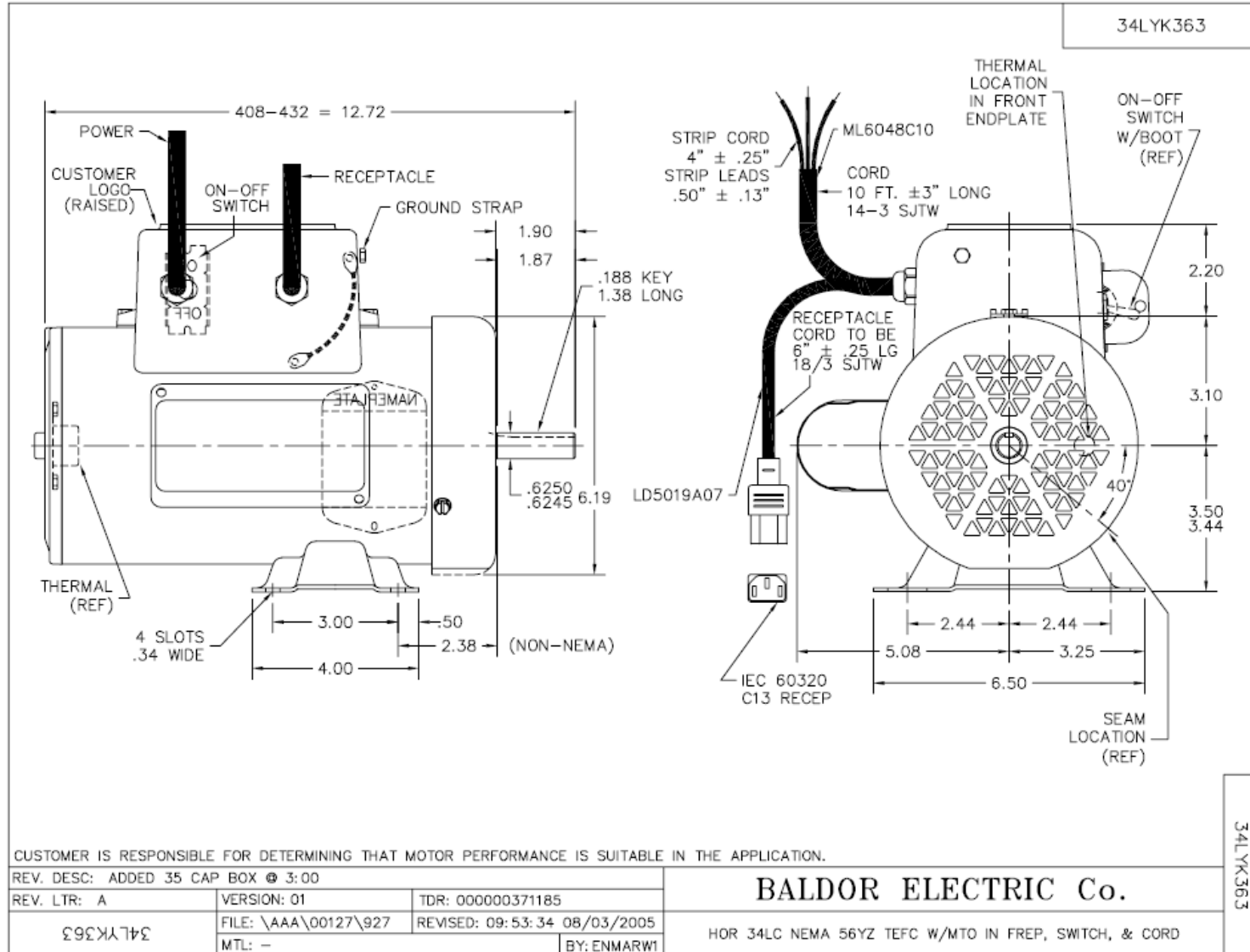
BALDOR® • RELIANCE

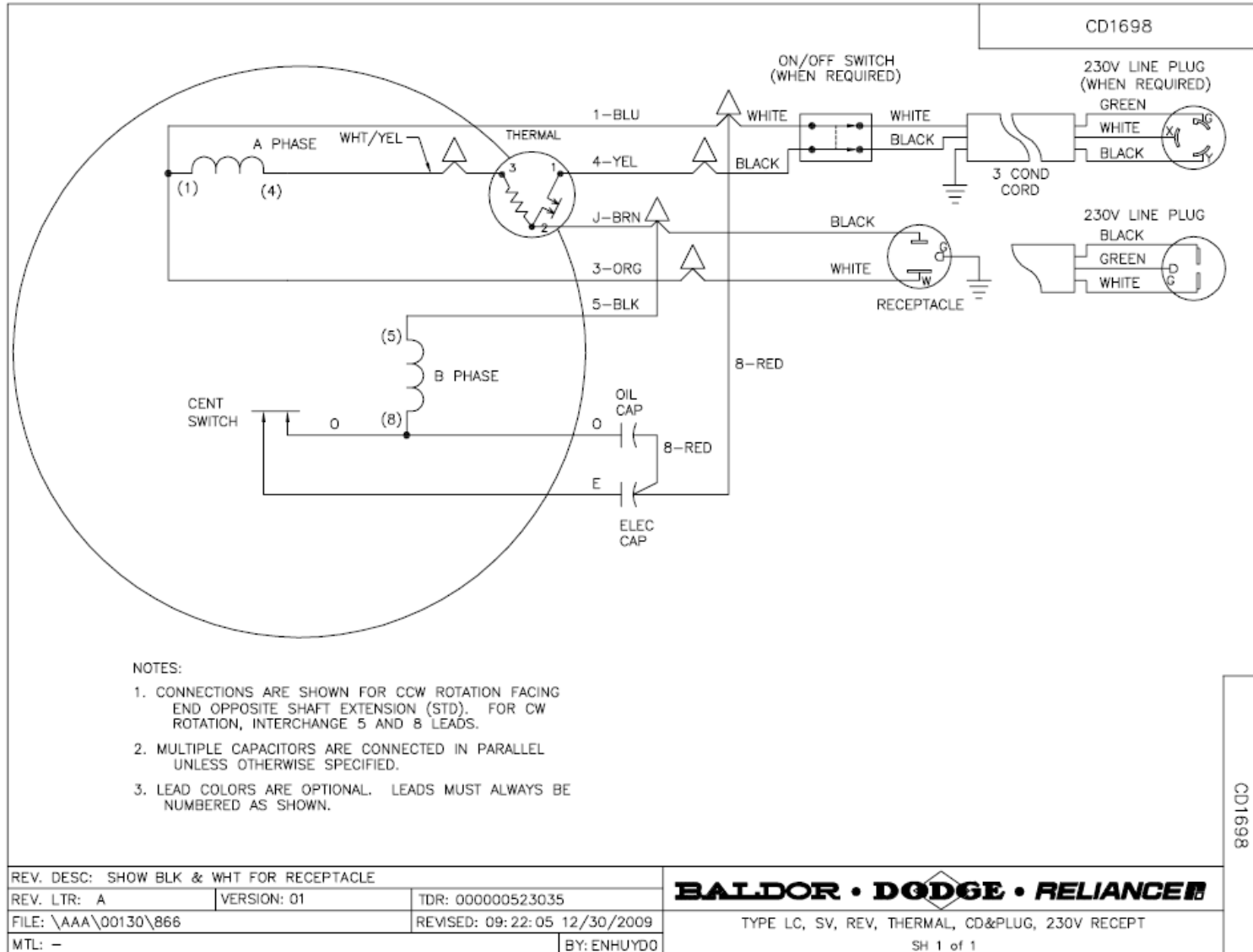
Product Information Packet

34K363Y984G1

SAW DUTYHP,2850RPM,1PH,50HZ,56YZ,3428LC

Part Detail							
Revision:	Q	Status:	PRD/A	Change #:		Proprietary:	Yes
Type:	AC	Prod. Type:	3428LC	Elec. Spec:	34WGY984	CD Diagram:	
Enclosure:	TEFC	Mfg Plant:		Mech. Spec:	34K363	Layout:	
Frame:	56YZ	Mounting:	F1	Poles:	02	Created Date:	06-29-2005
Base:	RG	Rotation:	FS	Insulation:	F	Eff. Date:	12-13-2011
Leads:	2#16 A PH,5#18 B&J	Literature:		Elec. Diagram:		Replaced By:	
Nameplate NP1675L							
CAT.NO.							
SPEC.	34K363Y984G1						
HP	SAW DUTY						
VOLTS	220-230						
AMP	6.4-6.3						
RPM	2850						
FRAME	56YZ	HZ	50	PH	1		
SER.F.	1.00	CODE	H	DES	-	CLASS	F
NEMA-NOM-EFF	75.5	PF	99				
RATING	40C AMB-CONT						
CC			USABLE AT 208V				
DE	6203	ODE	6203				
ENCL	TEFC	SN					





CD1698