

MK Diamond Products, Inc.
1315 Storm Parkway
Torrance, CA 90509-2803

SPECIFICATION SHEET			Date 05/05/10
MK Part Number 06-550-10	MK Description MTR, 1HP 120/208-230V 1PH 1725RPM, VTS-50	Revision A	
Manufacturer/Supplier P/N 35L593N962G1	Manufacturer/Vendor Description 1HP,1725RPM,1PH,60HZ,143TC,3520LC,TEFC,F		
Manufacturer Information BALDOR	Supplier Information POWER REPS	Alternate Manufacturer	
Specifications:			
<p>See following .pdf pages</p> <p>See drawing 06-550-10-M for manufactured from stock motor option.</p>			
Rev	Description	Date	Approved
-	INITIAL RELEASE	05/05/10	JRJ
-	ADD BALDOR SPEC GRAY MOTOR, NO ECO	05/04/13	JRJ
A	UPDATE BALDOR MODEL#& INFO, ECO #2365	12/05/17	SSH



BALDOR® • RELIANCE 

Product Information Packet

MK DIAMOND PRODUCTS

35L593N962G1

1HP, 1725RPM, 1PH, 60HZ, 143TC, 3520LC, TEFC, F

Part Detail							
Revision:	B	Status:	PRD/A	Change #:		Proprietary:	Yes
Type:	AC	Elec. Spec:	35WGN962	CD Diagram:	CD0881	Mfg Plant:	
Mech. Spec:	35L593	Layout:	35LYL593	Poles:	04	Created Date:	06-16-2014
Base:	N	Eff. Date:	05-24-2016	Leads:	6#18,1#14 #4TH		

Specs			
Enclosure:	TEFC	Insulation Class:	F
Frame:	143TC	Inverter Code:	Not Inverter
Frame Material:	Steel	KVA Code:	L
Output @ Frequency:	1.000 HP @ 60 HZ	Lifting Lugs:	No Lifting Lugs
Synchronous Speed @ Frequency:	1800 RPM @ 60 HZ	Locked Bearing Indicator:	Locked Bearing
Voltage @ Frequency:	115.0 V @ 60 HZ	Motor Lead Quantity/Wire Size:	6 @ 18 AWG
	208.0 V @ 60 HZ	Motor Lead Exit:	Ko Box
	230.0 V @ 60 HZ	Motor Lead Termination:	Flying Leads
XP Class and Group:	None	Motor Type:	3520LC
XP Division:	Not Applicable	Mounting Arrangement:	F1
Agency Approvals:	UR	Power Factor:	83
	CSA	Product Family:	General Purpose
Auxiliary Box:	No Auxiliary Box	Pulley End Bearing Type:	Ball
Auxiliary Box Lead Termination:	None	Pulley Face Code:	C-Face
Base Indicator:	No Mounting	Pulley Shaft Indicator:	Standard
Bearing Grease Type:	Polyrex EM (-20F +300F)	Rodent Screen:	None
Blower:	None	Shaft Extension Location:	Pulley End
Current @ Voltage:	10.400 A @ 115.0 V	Shaft Ground Indicator:	No Shaft Grounding

Product Information Packet: 35L593N962G1 - 1HP,1725RPM,1PH,60HZ,143TC,3520LC,TEFC,F

	5.100 A @ 208.0 V	Shaft Rotation:	Reversible
	5.200 A @ 230.0 V	Shaft Slinger Indicator:	No Slinger
Design Code:	L	Speed Code:	Single Speed
Drip Cover:	No Drip Cover	Motor Standards:	NEMA
Duty Rating:	CONT	Starting Method:	Direct on line
Electrically Isolated Bearing:	Not Electrically Isolated	Thermal Device - Bearing:	None
Feedback Device:	NO FEEDBACK	Thermal Device - Winding:	None
Front Face Code:	Standard	Vibration Sensor Indicator:	No Vibration Sensor
Front Shaft Indicator:	None	Winding Thermal 1:	Manual Thermal Overload
Heater Indicator:	No Heater	Winding Thermal 1 Location:	KO
		Winding Thermal 2:	None

Nameplate NP1257L

CAT.NO.	06-550-10														
SPEC.	35L593N962G1														
HP	1														
VOLTS	115/208-230														
AMP	10.4/5.1-5.2														
RPM	1725														
FRAME	143TC				HZ			60		PH		1			
SER.F.	1.15			CODE		L		DES		L		CL		F	
NEMA-NOM-EFF	75.5			PF		83									
RATING	40C AMB-CONT														
CC											USABLE AT 208V				
DE	6205			ODE		6203									
ENCL	TEFC			SN											

Parts List		
Part Number	Description	Quantity
SA282571	SA 35L593N962G1	1.000 EA
RA268870	RA 35L593N962G1	1.000 EA
OC3060C09SP	CAPACITOR 60 MFD 240 VAC	1.000 EA
TPCRT53CA	THERMAL 1PH 1.00 MAN 105C WELDED	1.000 EA
EC1645A06SP	ELEC CAP, 645-774 MFD, 125V, 2.06D X 4.	1.000 EA
TP5059	GENERIC THERMAL KIT	1.000 EA
NS2512A01	INSULATOR, CONDUIT BOX X	1.000 EA
35CB3007A58	35 CB .88 DIA @ 6, 1.00 MTO W/BOOT @ 3 (1.000 EA
36GS1000SP	GASKET-CONDUIT BOX, .06 THICK #SV-330 LE	1.000 EA
51XB1016A07	10-16 X 7/16 HXWSSLD SERTYB	2.000 EA
RM1014A01SP	BUTYL RUB.THRM COV. (MENA)	1.000 EA
NS2500A02	INSULATOR, MAN THER PROT	1.000 EA
HA6015A11	EARED 1" THERMAL RETAINER (PLATED)	1.000 EA
51XB1214A10	12-14 X 5/8HX WS SL SR TYBX	2.000 EA
11XW1032G06	10-32 X .38, TAPTITE II, HEX WSHR SLTD U	1.000 EA
51XW0832A07	8-32 X .44, TAPTITE II, HEX WSHR SLTD SE	2.000 EA
35FE3100M01	FREP TEFC ASSEMBLY FOR ROUTING	1.000 EA
HW4500A01	1641B(ALEMITE)400 UNIV, GREASE FITT	1.000 EA
35CB3801	CAPACITOR COVER, CAST	1.000 EA
34GS3002	GASKET, CAPACITOR BOX	1.000 EA
HA7010	CAPACITOR RETENTION CLAMP	1.000 EA
NS2501A02	INSULATOR, CAPACITOR BOX	1.000 EA
51XB1016A08	10-16X 1/2HXWSSLD SERTYB	2.000 EA
HW5100A03	WAVY WASHER (W1543-017)	1.000 EA

Parts List (continued)		
Part Number	Description	Quantity
35EP3300A46	PULLEY ENDPLATE, MACH	1.000 EA
HW4500A01	1641B(ALEMITE)400 UNIV, GREASE FITT	1.000 EA
51XN1032A20	10-32 X 1 1/4 HX WS SL SR	2.000 EA
51XB1214A16	12-14X1.00 HXWSSLD SERTYB	1.000 EA
35FH4005A84SP	IEC FH W/GRSR, NO DIMPLES PRIMED	1.000 EA
51XW1032A06	10-32 X .38, TAPTITE II, HEX WSHR SLTD S	3.000 EA
35CB4521GX	CONDUIT BOX LID KIT	1.000 EA
51XW0832A07	8-32 X .44, TAPTITE II, HEX WSHR SLTD SE	4.000 EA
HW2501D13	KEY, 3/16 SQ X 1.375	1.000 EA
HA7000A01	KEY RETAINER 7/8" DIA SHAFT	1.000 EA
85XU0407S04	4X1/4 U DRIVE PIN STAINLESS	2.000 EA
LB1087	LABEL,MANUAL RESET (ROLL LABEL)	1.000 EA
MJ1000A02	GREASE, POLYREX EM EXXON (USe 4824-15A)	0.050 LB
35FN3002A05SP	EXFN, PLASTIC, 6.376 OD, .638 ID	1.000 EA
MG1000G27	MED CHARCOAL METALLIC GREY 400-0096	0.017 GA
HA3100A37	THRUBOLT 10-32 X 8.500	4.000 EA
WD1000A15	3-520132-2 AMP FLAG (4M/RL NON-CANC/NON-	4.000 EA
SP5181A01	MODEL 35 LC TORQ STAT SWITCH LEAD ASSY	1.000 EA
LB1119N	WARNING LABEL	1.000 EA
LC0008	CONNECTION LABEL	1.000 EA
NP1257L	ALUM UL CSA CC THERMAL REV MTG	1.000 EA
36PA1000	PKG GRP, PRINT PK1016A06	1.000 EA
PK3082	STYROFOAM CRADLE	1.000 EA
MN416A01	TAG-INSTAL-MAINT no wire (1100/bx) 11/14	1.000 EA

Product Information Packet: 35L593N962G1 - 1HP,1725RPM,1PH,60HZ,143TC,3520LC,TEFC,F

LB1417	LABEL CARTON 6X4 PERFORATED BLANK ROLLS	1.000 EA
--------	---	----------

AC Induction Motor Performance Data
Record # 42960 - Typical performance - not guaranteed values

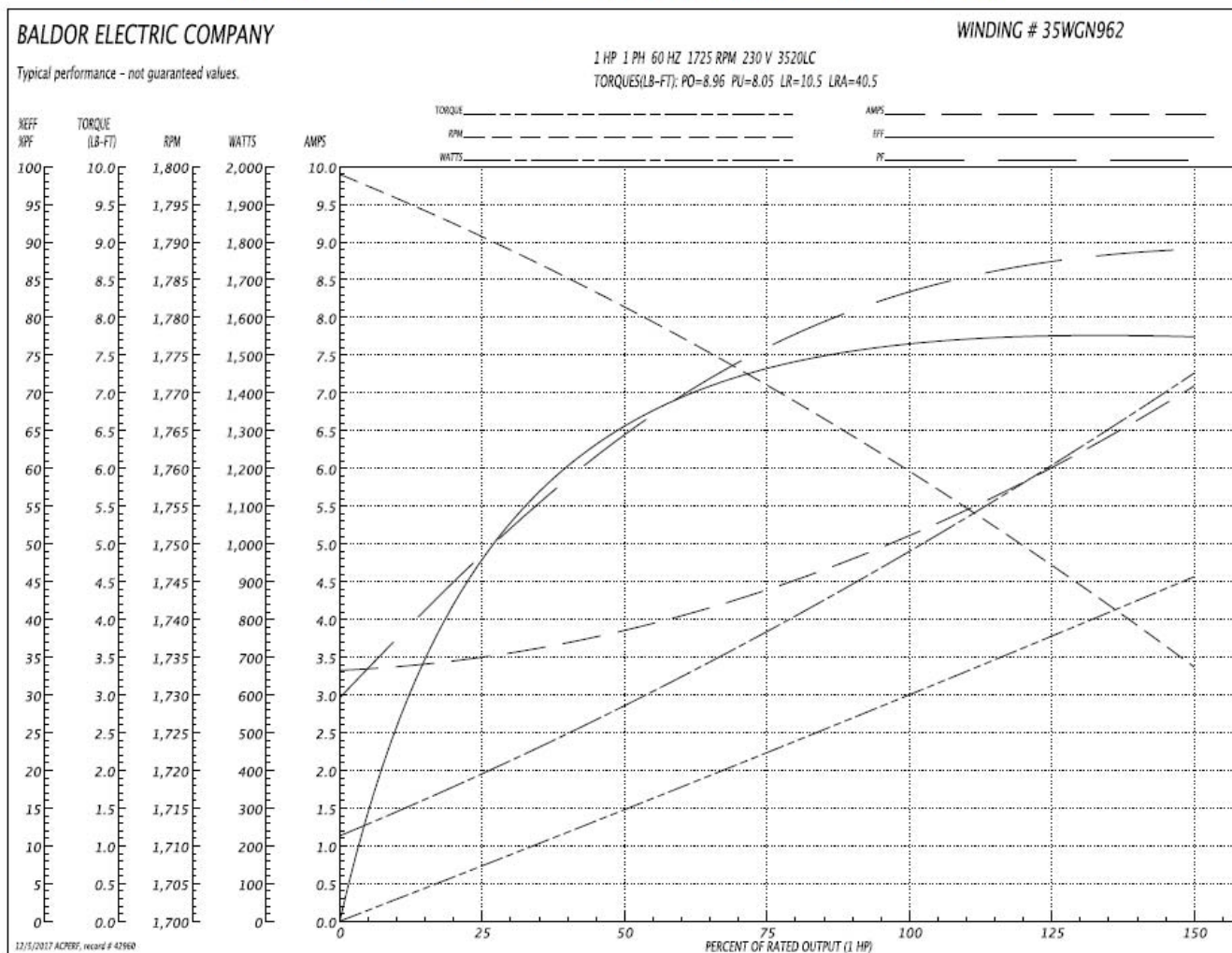
Winding: 35WGN962-R001	Type: 3520LC	Enclosure: TEFC
-------------------------------	---------------------	------------------------

Nameplate Data				230 V, 60 Hz: High Voltage Connection	
Rated Output (HP)	1			Full Load Torque	3.06 LB-FT
Volts	115/208-230			Start Configuration	direct on line
Full Load Amps	10.4/5.1-5.2			Breakdown Torque	8.96 LB-FT
R.P.M.	1725			Pull-up Torque	8.05 LB-FT
Hz	60	Phase	1	Locked-rotor Torque	10.5 LB-FT
NEMA Design Code	L	KVA Code	L	Starting Current	40.5 A
Service Factor (S.F.)	1.15			No-load Current	3.34 A
NEMA Nom. Eff.	75.5	Power Factor	83	Line-line Res. @ 25°C	2.7083 Ω A Ph 1.4108 Ω B Ph
Rating - Duty	40C AMB-CONT			Temp. Rise @ Rated Load	67°C
S.F. Amps				Temp. Rise @ S.F. Load	74°C

Load Characteristics 230 V, 60 Hz, 1 HP

% of Rated Load	25	50	75	100	125	150	S.F.
Power Factor	50	66	77	83	87	89	85
Efficiency	47.5	66.8	73.3	76.9	77.9	77.3	77.5
Speed	1790	1780.2	1770.2	1759.1	1747.6	1732.9	1752
Line amperes	3.51	3.83	4.44	5.21	6.07	7.07	5.73

Performance Graph at 230V, 60Hz, 1.0HP Typical performance - Not guaranteed values



AC Induction Motor Performance Data
Record # 42961 - Typical performance - not guaranteed values

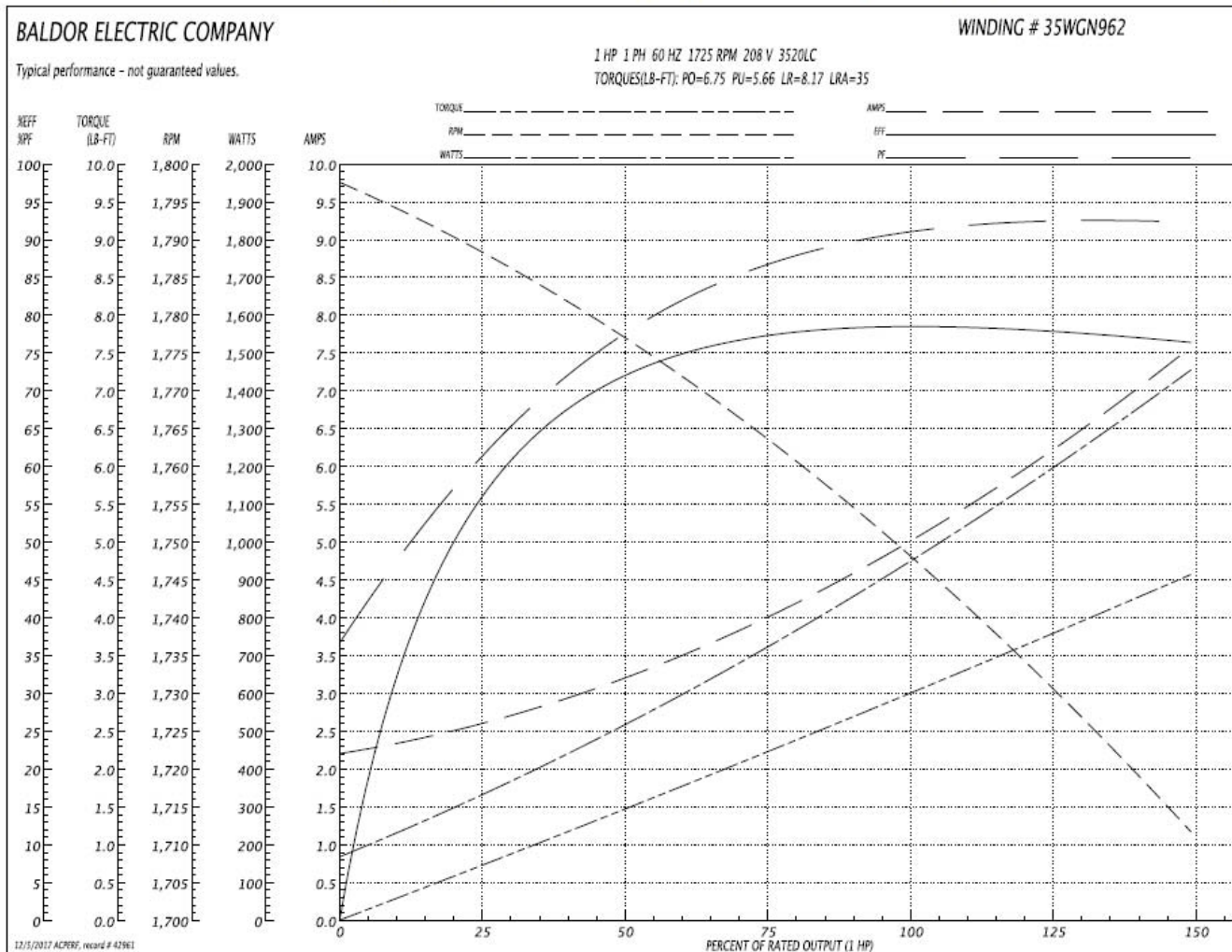
Winding: 35WGN962-R001	Type: 3520LC	Enclosure: TEFC
-------------------------------	---------------------	------------------------

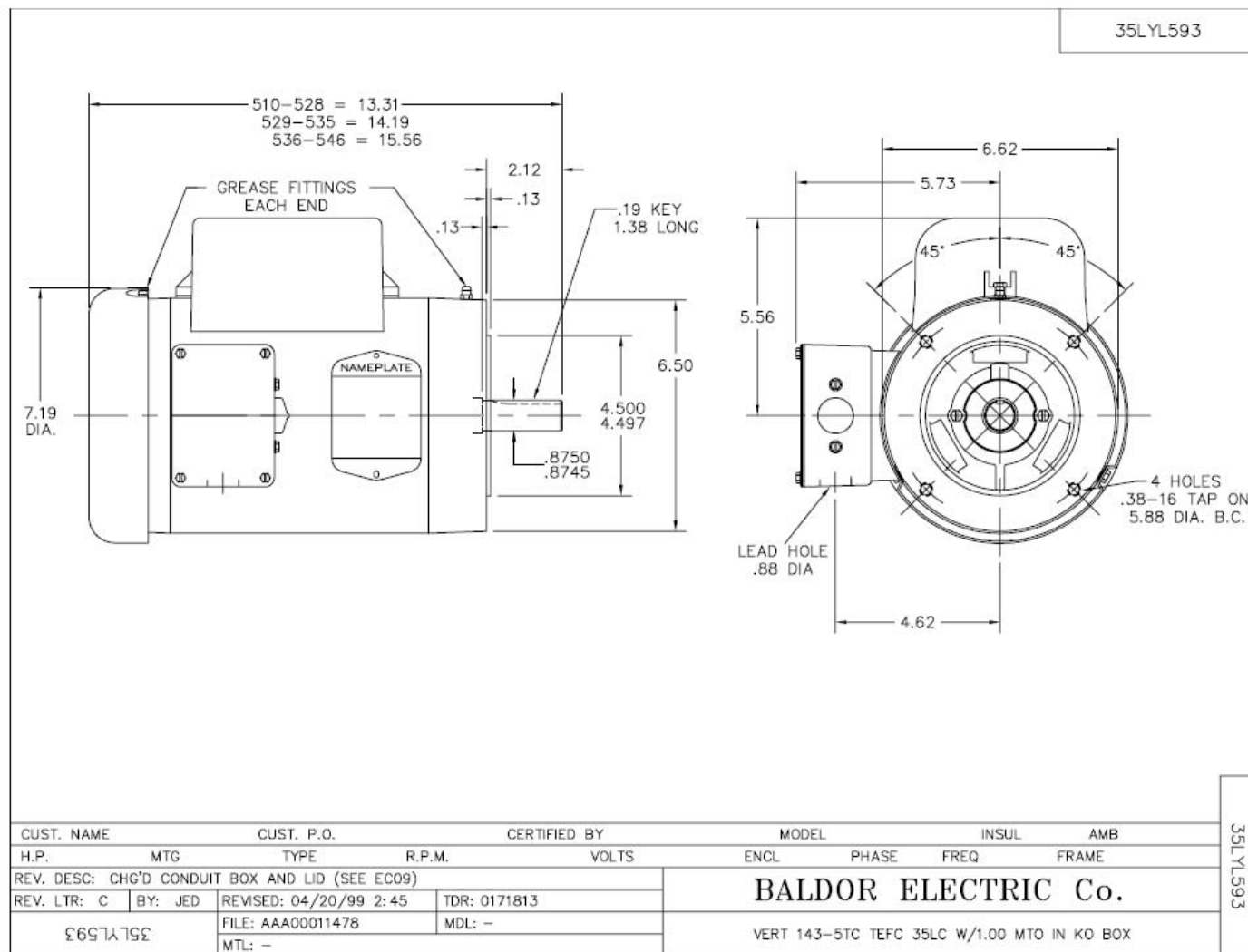
Nameplate Data				208 V, 60 Hz: High Voltage Connection	
Rated Output (HP)	1			Full Load Torque	3.05 LB-FT
Volts	115/208-230			Start Configuration	direct on line
Full Load Amps	10.4/5.1-5.2			Breakdown Torque	6.75 LB-FT
R.P.M.	1725			Pull-up Torque	5.66 LB-FT
Hz	60	Phase	1	Locked-rotor Torque	8.17 LB-FT
NEMA Design Code	L	KVA Code	L	Starting Current	35 A
Service Factor (S.F.)	1.15			No-load Current	2.25 A
NEMA Nom. Eff.	75.5	Power Factor	83	Line-line Res. @ 25°C	2.7083 Ω A Ph 1.4108 Ω B Ph
Rating - Duty	40C AMB-CONT			Temp. Rise @ Rated Load	

Load Characteristics 208 V, 60 Hz, 1 HP

% of Rated Load	25	50	75	100	125	150	S.F.
Power Factor	64	80	87	90	92	93	91
Efficiency	55.6	71.4	78.3	78.5	78.3	76.1	78.4
Speed	1786.8	1775	1762.7	1748.1	1732	1710.1	1738
Line amperes	2.53	3.26	4.08	5.13	6.25	7.57	5.8

Performance Graph at 208V, 60Hz, 1.0HP Typical performance - Not guaranteed values





CD0881

