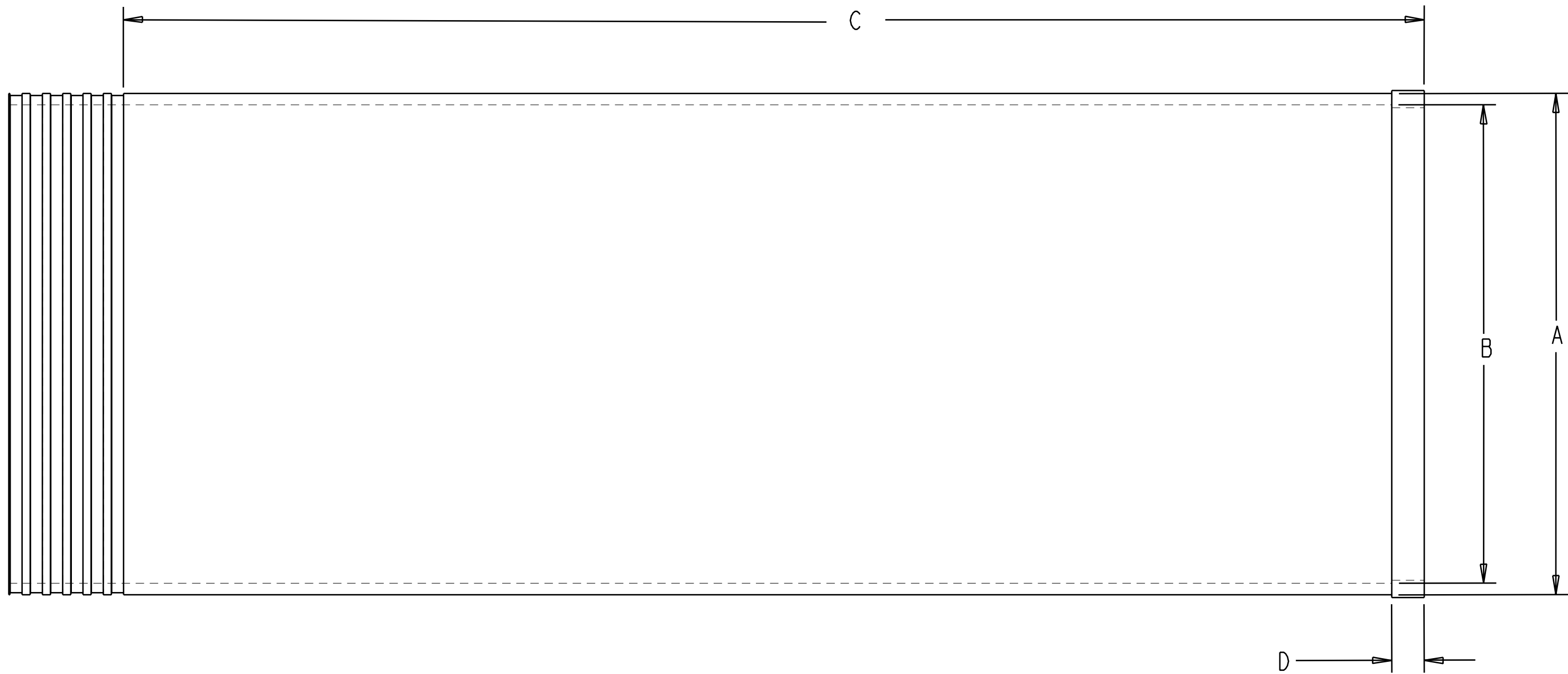
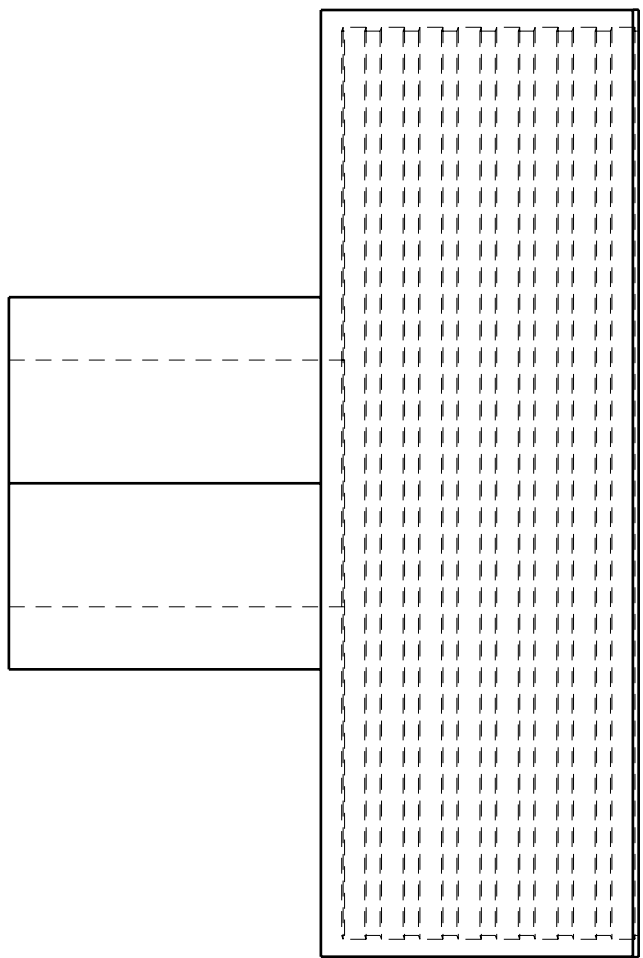



| REVISIONS | | | | |
|-----------|------|-----------------|--------|----------|
| ZONE | REV. | DESCRIPTION | DATE | APPROVED |
| - | - | PROTOTYPE, ECO# | 7/8/10 | RMR |



| QTY REQ | PART OR IDENTIFYING NO. | MATERIAL/SPECIFICATION | FINISH | ITEM NO. |
|---------|-------------------------|------------------------|--------|----------|
| 1 | | | | - |

| PARTS LIST | | | | |
|---|--|--|-----|--------------|
| TOLERANCES UNLESS OTHERWISE SPECIFIED | | DRAWN | | DATE |
| DIMENSIONS ARE IN INCHES | | DRWN | RMR | 7/8/10 |
| WHOLE NO. AND FRACTIONS = 1/16 (EXCEPT DRILL HOLES) | | CHECK | - | - |
| .X = ±.03 | | DESIGN | - | - |
| .XX = ±.010 | | NEXT ASSY. | | |
| .XXX = ±.005 | | PROPRIETARY NOTICE: THIS DRAWING AND INFORMATION IT CONTAINS ARE THE PROPERTY OF MK DIAMOND INC. AND ARE CONSIDERED CONFIDENTIAL AND MAY NOT BE REPRODUCED, COPIED, OR USED IN PART OR IN WHOLE WITHOUT THE WRITTEN CONSENT OF MK DIAMOND PRODUCTS INC.. | | |
| ANGLES = ±1/2° | | | | |
| DO NOT SCALE DRAWING | | APPLICATION | | SCALE: 1.000 |

| | | | |
|---|------------|------------|------|
|  MK DIAMOND PRODUCTS INC. 1315 STORM PARKWAY TORRANCE, CA. 90509 | | CORE BIT | |
| SIZE | PART NO. | DWG. NO. | REV. |
| C | CORE-BIT-5 | CORE-BIT-5 | - |

| |
|---------------|
| SHEET: 1 of 1 |
|---------------|