

Standard Symbol

<b>BMP Objectives</b>	
<input type="radio"/>	Soil Stabilization
<input type="radio"/>	Sediment Control
<input type="radio"/>	Tracking Control
<input type="radio"/>	Wind Erosion Control
<input checked="" type="radio"/>	Non-Storm Water Management
<input checked="" type="radio"/>	Materials and Waste Management

**Definition and Purpose** These are procedures and practices that are designed to minimize or eliminate the discharge of concrete waste materials to the storm drain systems or watercourses.

- Appropriate Applications**
- Concrete waste management procedures and practices are implemented on construction projects where concrete is used as a construction material or where concrete dust and debris result from demolition activities.
  - Where slurries containing portland cement concrete (PCC) or asphalt concrete (AC) are generated, such as from sawcutting, coring, grinding, grooving, and hydro-concrete demolition.
  - Where concrete trucks and other concrete-coated equipment are washed on site, when approved by the Resident Engineer (RE). See also NS-8, "Vehicle and Equipment Cleaning."
  - Where mortar-mixing stations exist.

**Limitations** ■ None identified.

**Standards and Specifications** **Education**

- Educate employees, subcontractors, and suppliers on the concrete waste management techniques described herein.
- The Contractor's Water Pollution Control Manager (WPCM) shall oversee and enforce concrete waste management procedures.

**Concrete Demolition Wastes**

- Stockpile concrete demolition wastes in accordance with BMP WM-3, "Stockpile Management."
- Disposal of hardened PCC and AC waste shall be in conformance with

Standard Specifications Section 7-1.13 or 15-3.02.

## ***Concrete Slurry Waste Management and Disposal***

- PCC and AC waste shall not be allowed to enter storm drainage systems or watercourses.
- A sign shall be installed adjacent to each temporary concrete washout facility to inform concrete equipment operators to utilize the proper facilities as shown on Page 7.
- A foreman and/or construction supervisor shall monitor onsite concrete working tasks, such as saw cutting, coring, grinding and grooving to ensure proper methods are implemented.
- Residue from saw cutting, coring and grinding operations shall be picked up by means of a vacuum device. Residue shall not be allowed to flow across the pavement and shall not be left on the surface of the pavement. See also BMP NS-3, "Paving and Grinding Operations."
- Vacuumed slurry residue shall be disposed in accordance with BMP WM-5, "Solid Waste Management" and Standard Specifications Section 7-1.13. Slurry residue shall be temporarily stored in a facility as described in "Onsite Temporary Concrete Washout Facility, Concrete Transit Truck Washout Procedures" below), or within an impermeable containment vessel or bin approved by the Engineer.
- Collect and dispose of all residues from grooving and grinding operations in accordance with Standard Specifications Section 7-1.13, 42-1.02 and 42-2.02.

## ***Onsite Temporary Concrete Washout Facility, Concrete Transit Truck Washout Procedures***

- Temporary concrete washout facilities shall be located a minimum of 15 m (50 ft) from storm drain inlets, open drainage facilities, and watercourses, unless determined infeasible by the RE. Each facility shall be located away from construction traffic or access areas to prevent disturbance or tracking.
- A sign shall be installed adjacent to each washout facility to inform concrete equipment operators to utilize the proper facilities. The sign shall be installed as shown on the plans and in conformance with the provisions in Standard Specifications Section 56-2, Roadside Signs.
- Temporary concrete washout facilities shall be constructed above grade or below grade at the option of the Contractor. Temporary concrete washout facilities shall be constructed and maintained in sufficient quantity and size to contain all liquid and concrete waste generated by washout operations.
- Temporary washout facilities shall have a temporary pit or bermed areas of sufficient volume to completely contain all liquid and waste concrete

materials generated during washout procedures.

- Perform washout of concrete mixers, delivery trucks, and other delivery systems in designated areas only.
- Wash concrete only from mixer chutes into approved concrete washout facility. Washout may be collected in an impermeable bag or other impermeable containment devices for disposal.
- Pump excess concrete in concrete pump bin back into concrete mixer truck.
- Concrete washout from concrete pumper bins can be washed into concrete pumper trucks and discharged into designated washout area or properly disposed offsite.
- Once concrete wastes are washed into the designated area and allowed to harden, the concrete shall be broken up, removed, and disposed of in conformance with the provisions in Standard Specifications Section 7-1.13 or 15-3.02.

### ***Temporary Concrete Washout Facility Type “Above Grade”***

- Temporary concrete washout facility Type “Above Grade” shall be constructed as shown on Page 6 or 7, with a recommended minimum length and minimum width of 3 m (10 ft), but with sufficient quantity and volume to contain all liquid and concrete waste generated by washout operations. The length and width of a facility may be increased, at the Contractor’s expense, upon approval from the RE.
- Straw bales, wood stakes, and sandbag materials shall conform to the provisions in BMP SC-9, "Straw Bale Barrier."
- Plastic lining material shall be a minimum of 10-mil polyethylene sheeting and shall be free of holes, tears or other defects that compromise the impermeability of the material. Liner seams shall be installed in accordance with manufacturers’ recommendations.
- Portable delineators shall conform to the provisions in Standard Specifications Section 12-3.04, "Portable Delineators." The delineator bases shall be cemented to the pavement in the same manner as provided for cementing pavement markers to pavement in Standard Specifications Section 85-1.06, "Placement." Portable delineators shall be applied only to a clean, dry surface.

### ***Temporary Concrete Washout Facility (Type Below Grade)***

- Temporary concrete washout facility Type “Below Grade” shall be constructed as shown on page 6, with a recommended minimum length and minimum width of 3m (10 ft). The quantity and volume shall be sufficient to contain all liquid and concrete waste generated by washout operations. The length and width of a facility may be increased, at the Contractor’s expense,

upon approval of the RE. Lath and flagging shall be commercial type.

- Plastic lining material shall be a minimum of 10-mil polyethylene sheeting and shall be free of holes, tears or other defects that compromise the impermeability of the material. Liner seams shall be installed in accordance with manufacturers' recommendations.
- The soil base shall be prepared free of rocks or other debris that may cause tears or holes in the plastic lining material.

### ***Removal of Temporary Concrete Washout Facilities***

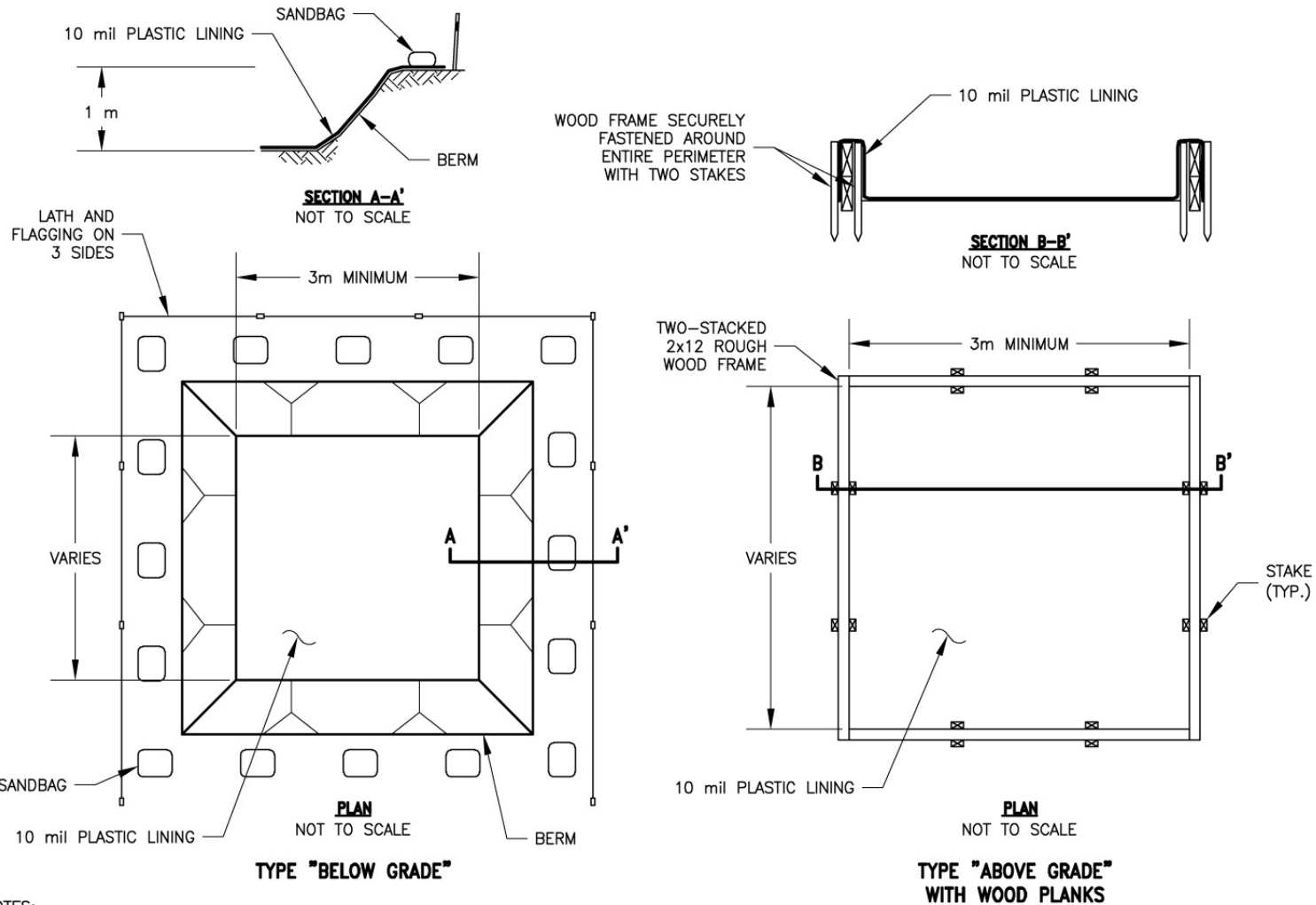
- When temporary concrete washout facilities are no longer required for the work, as determined by the RE, the hardened concrete shall be removed and disposed of in conformance with the provisions in Standard Specifications Section 7-1.13 or 15-3.02. Disposal of PCC dried residues, slurries or liquid waste shall be disposed of outside the highway right-of-way in conformance with provisions of Standard Specifications Section 7-1-13. Materials used to construct temporary concrete washout facilities shall become the property of the Contractor, shall be removed from the site of the work, and shall be disposed of outside the highway right-of-way in conformance with the provisions of the Standard Specifications, Section 7-1.13.
- Holes, depressions or other ground disturbance caused by the removal of the temporary concrete washout facilities shall be backfilled and repaired in conformance with the provisions in Standard Specifications Section 15-1.02, "Preservation of Property."

### **Maintenance and Inspection**

- The Contractor's Water Pollution Control Manager (WPCM) shall monitor on site concrete waste storage and disposal procedures at least weekly or as directed by the RE.
- The WPCM shall monitor concrete working tasks, such as saw cutting, coring, grinding and grooving daily to ensure proper methods are employed or as directed by the RE.
- Temporary concrete washout facilities shall be maintained to provide adequate holding capacity with a minimum freeboard of 100 mm (4 inches) for above grade facilities and 300 mm (12 inches) for below grade facilities. Maintaining temporary concrete washout facilities shall include removing and disposing of hardened concrete and returning the facilities to a functional condition. Hardened concrete materials shall be removed and disposed of in conformance with the provisions in Standard Specifications Section 7-1.13 or 15-3.02.
- Existing facilities must be cleaned, or new facilities must be constructed and ready for use once the washout is 75% full.
- Temporary concrete washout facilities shall be inspected for damage (i.e.

tears in polyethylene liner, missing sandbags, etc.). Damaged facilities shall be repaired.

# Concrete Waste Management

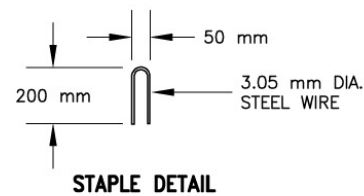
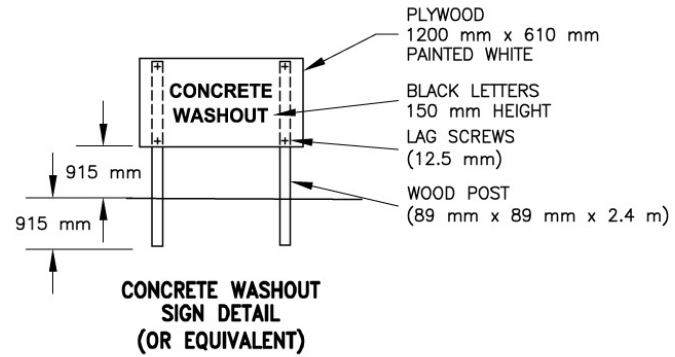
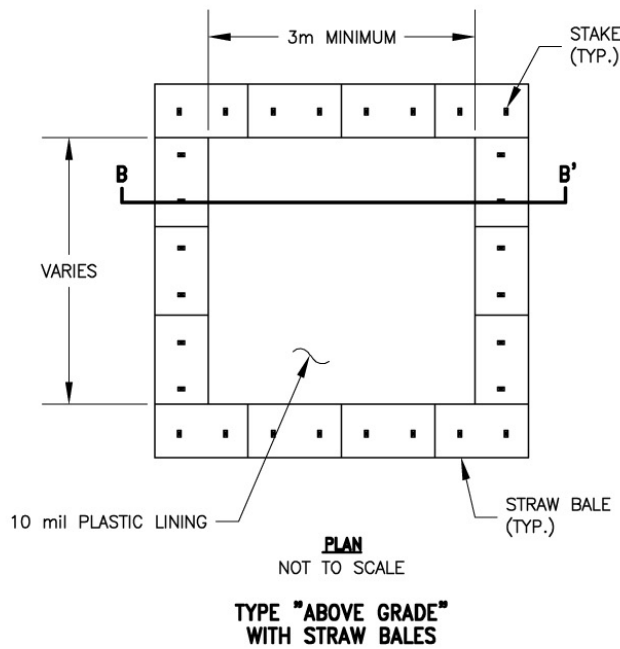
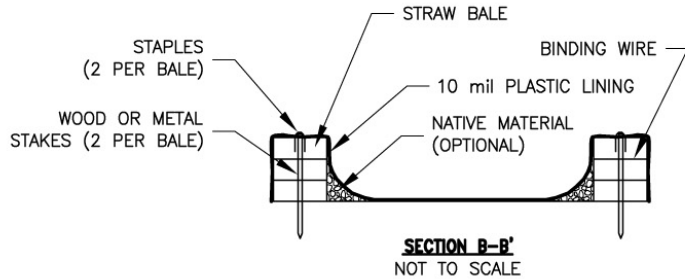


**NOTES:**

1. ACTUAL LAYOUT DETERMINED IN THE FIELD.
2. THE CONCRETE WASHOUT SIGN (SEE PAGE 6) SHALL BE INSTALLED WITHIN 10 m OF THE TEMPORARY CONCRETE WASHOUT FACILITY.



# Concrete Waste Management



**NOTES:**

1. ACTUAL LAYOUT DETERMINED IN THE FIELD.
2. THE CONCRETE WASHOUT SIGN (SEE FIG. 4-15) SHALL BE INSTALLED WITHIN 10 m OF THE TEMPORARY CONCRETE WASHOUT FACILITY.

CALTRANS/FIG4-14.DWG SAC 8-14-02

