

A

B

C

D

E

F

G

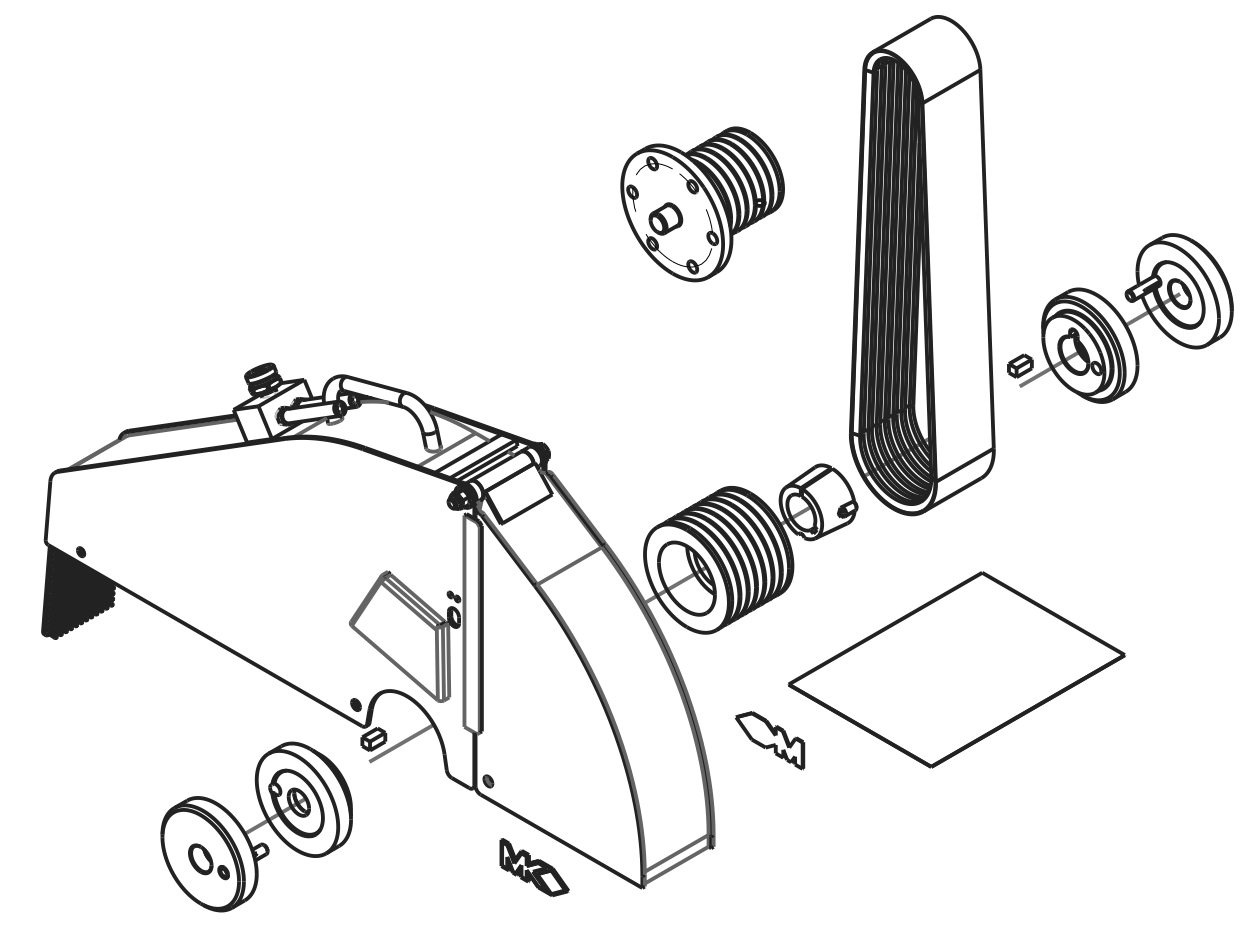
H

I

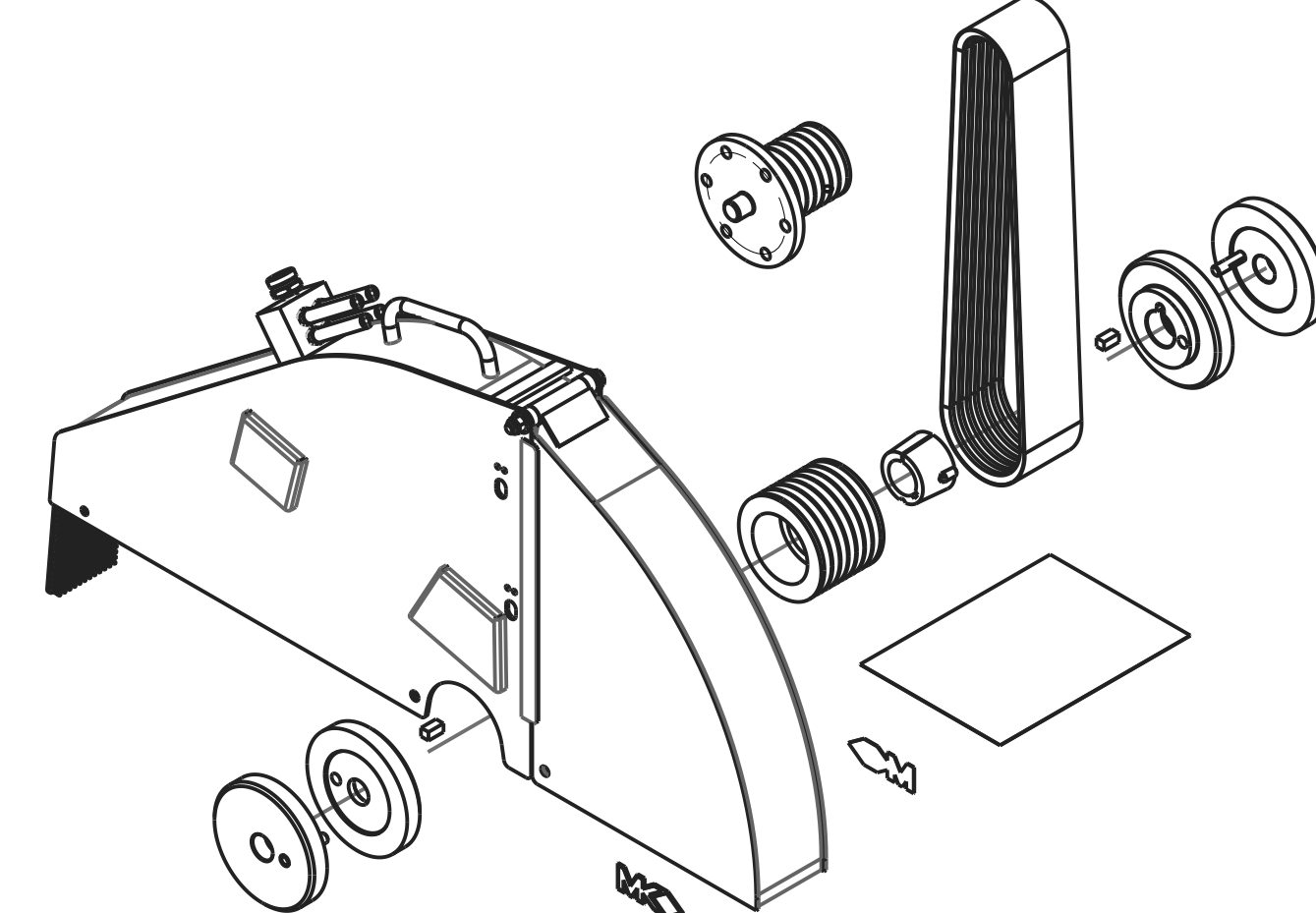
J

REVISIONS				
ZONE	REV.	DESCRIPTION	DATE	APPROVED
-	-	INITIAL RELEASE, ECO #2062	04/23/13	SMH
-	A	ADD TRUCK STOP SCREWS, ECO# 2102	10/17/13	SMH
-	B	CHANGE BLADE GUARDS, ECO# 2324	03/14/18	SMH

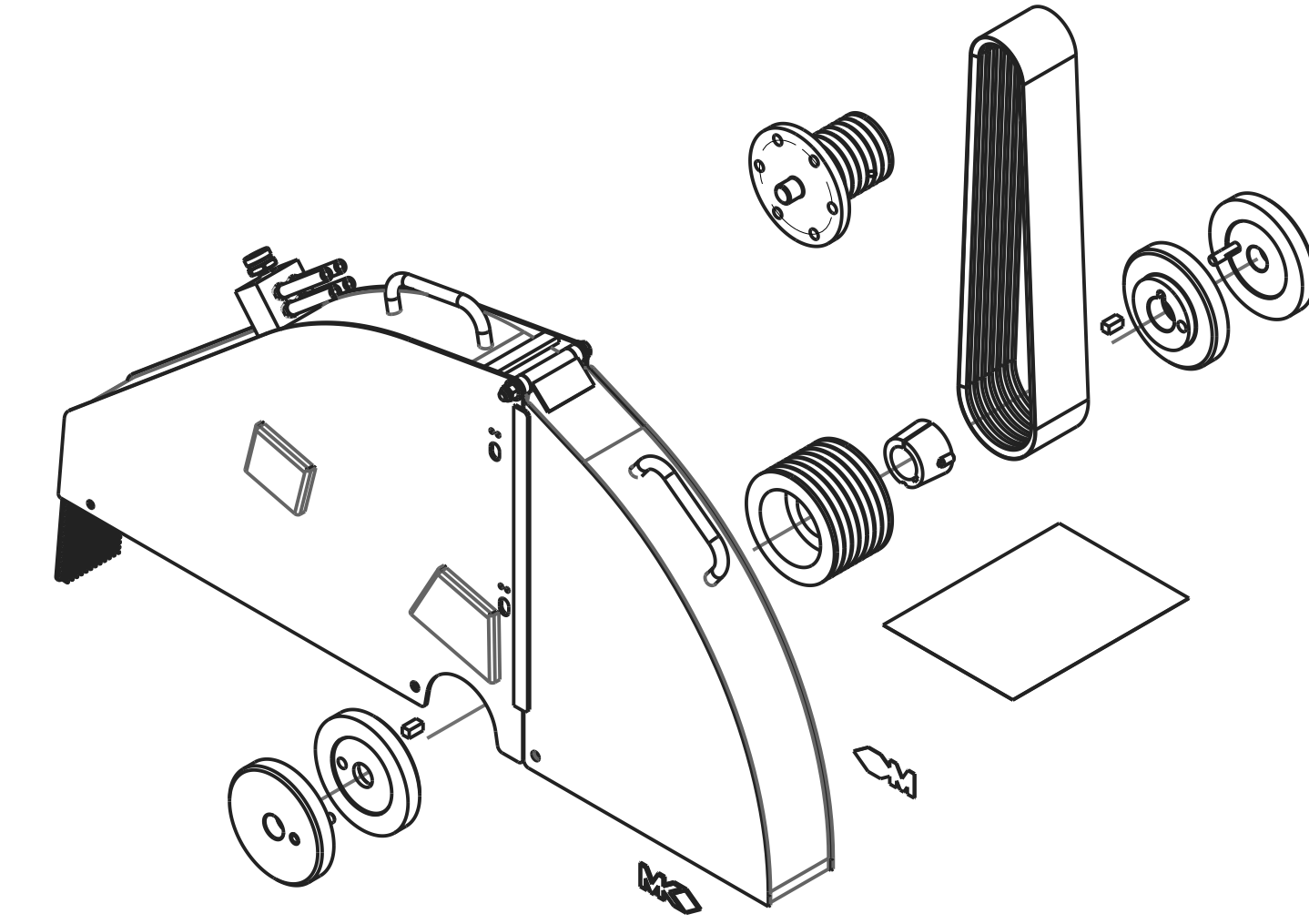
ROW 1:
BLADEGUARD KITS FOR MK-4000KB SINGLE SPEED SAWS.



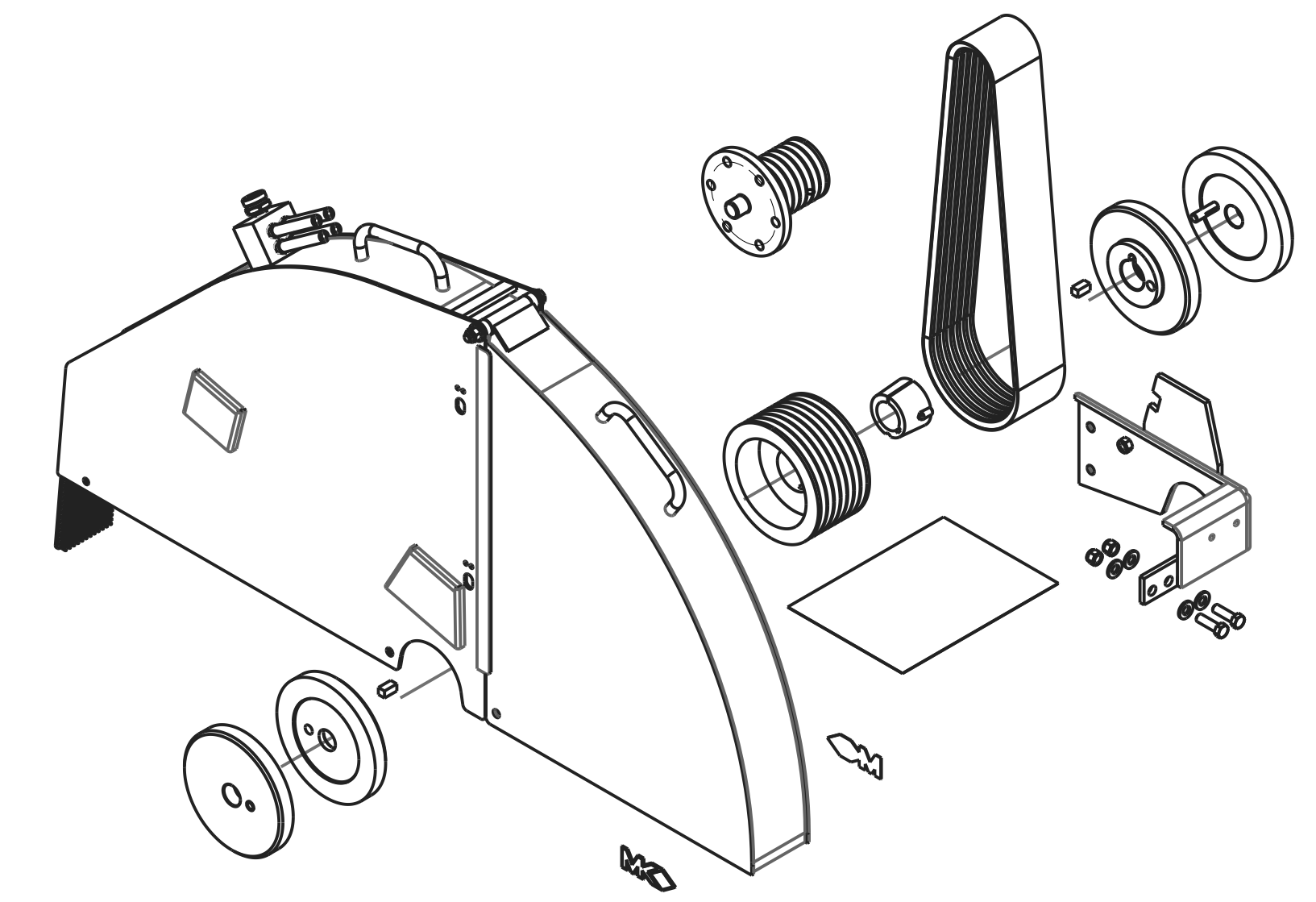
170610-4020 KIT, BLADE GUARD, 20", 4020KB
SEE PAGE 3



170610-4026 KIT, BLADE GUARD, 26", 4026KB
SEE PAGE 4

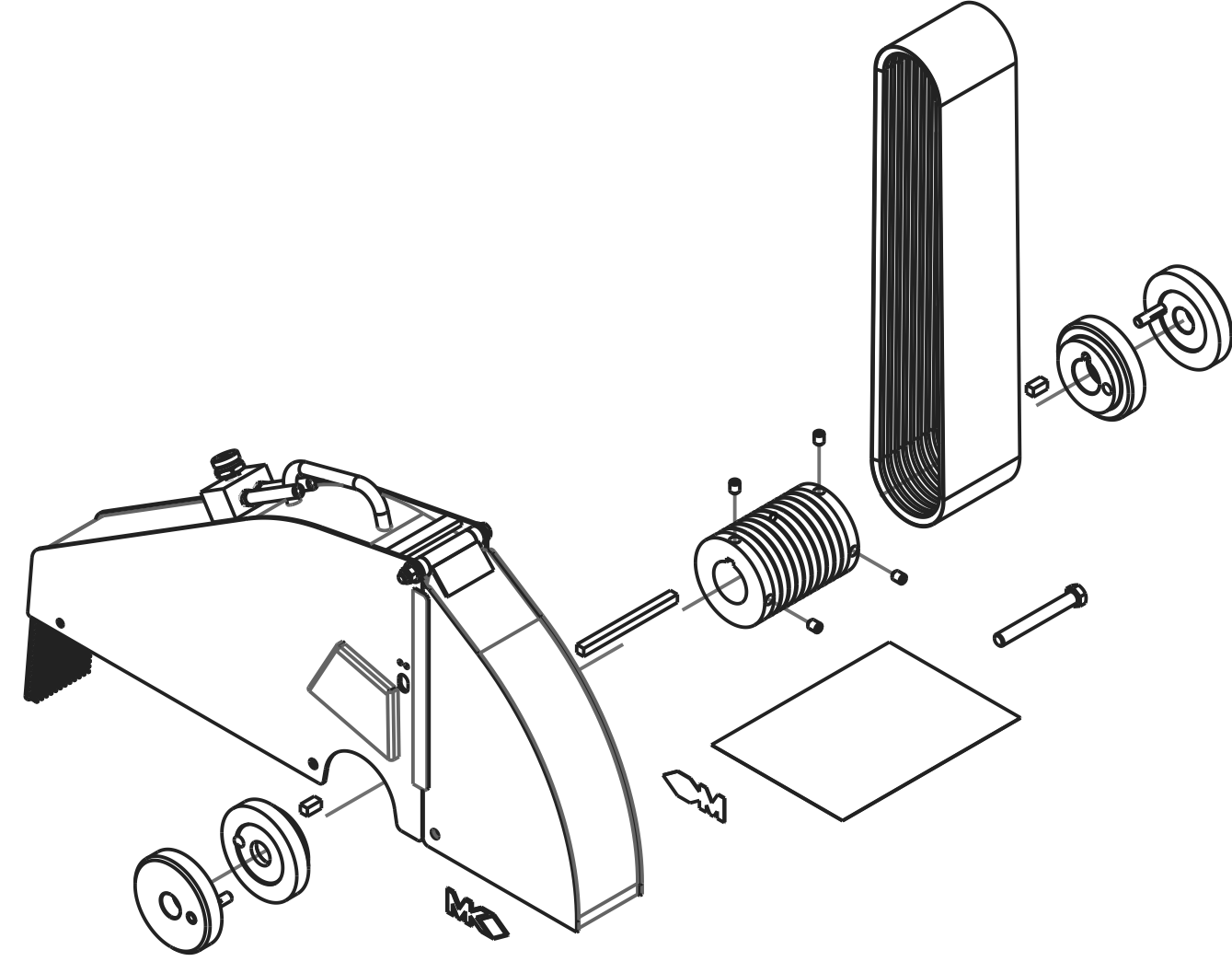


170610-4030 KIT, BLADE GUARD, 30", 4030KB
SEE PAGE 5

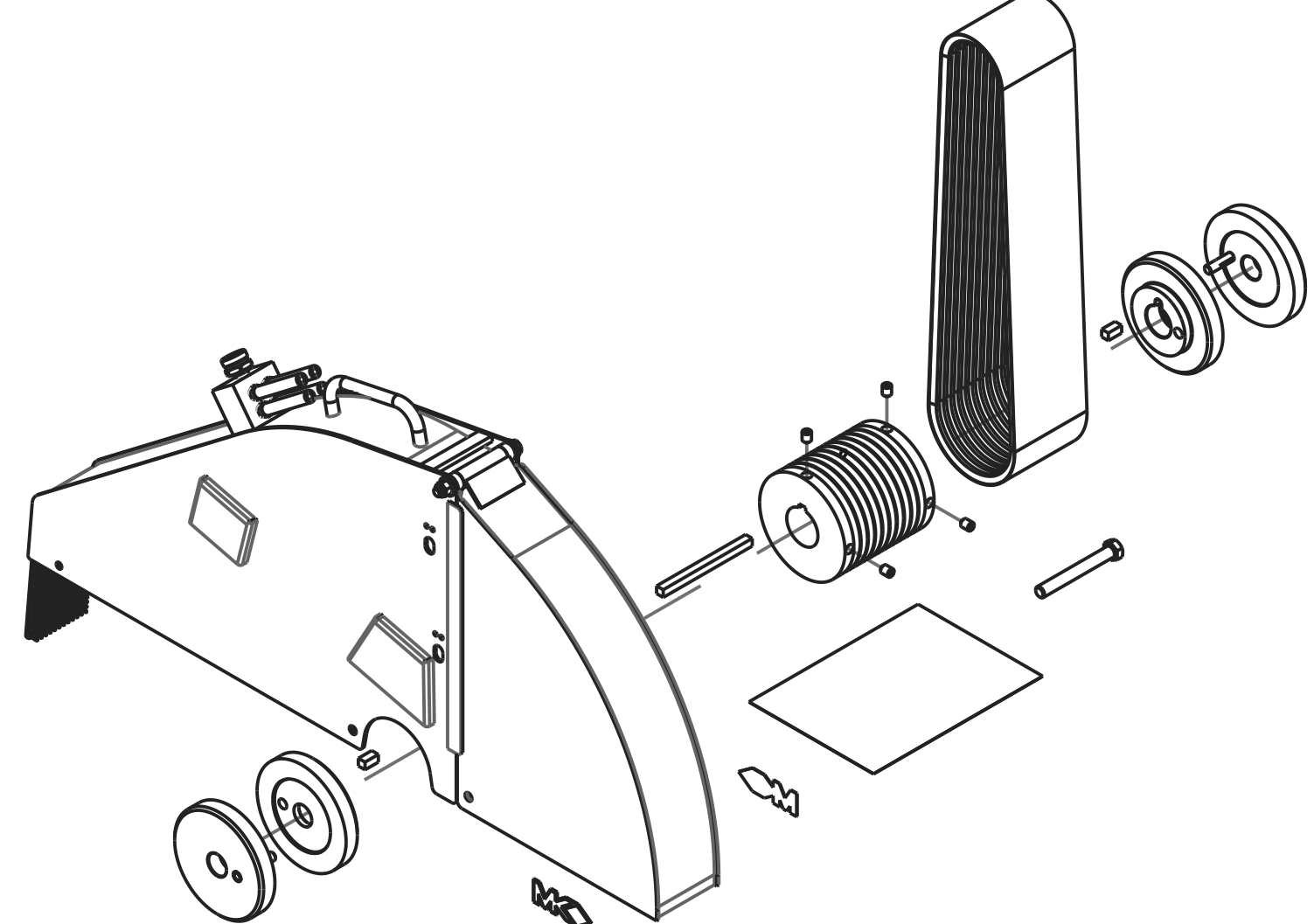


170610-4036 KIT, BLADE GUARD, 36", 4036KB
SEE PAGE 6

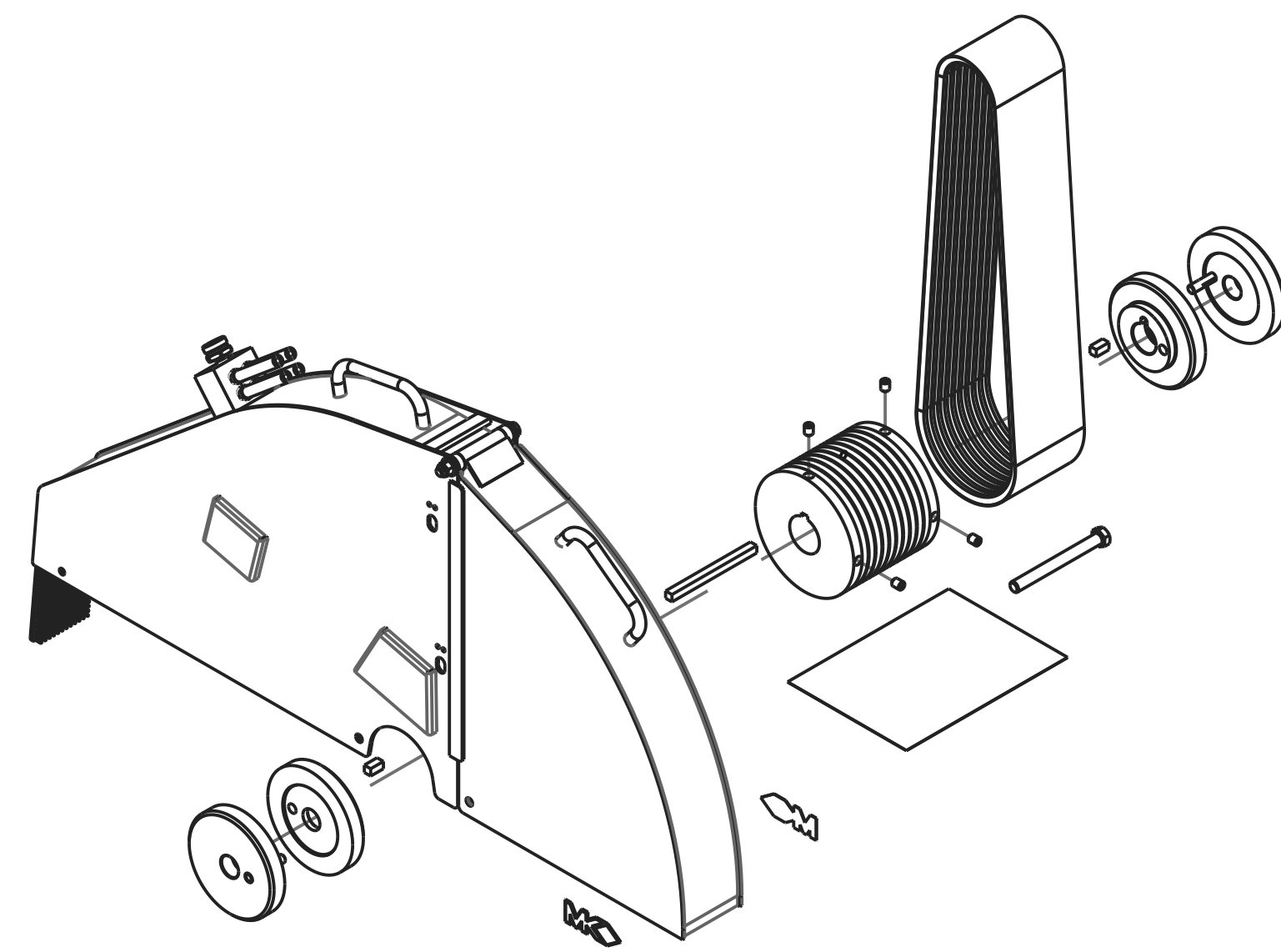
ROW 2:
BLADEGUARD KITS FOR MK-6000KB SINGLE SPEED SAWS.



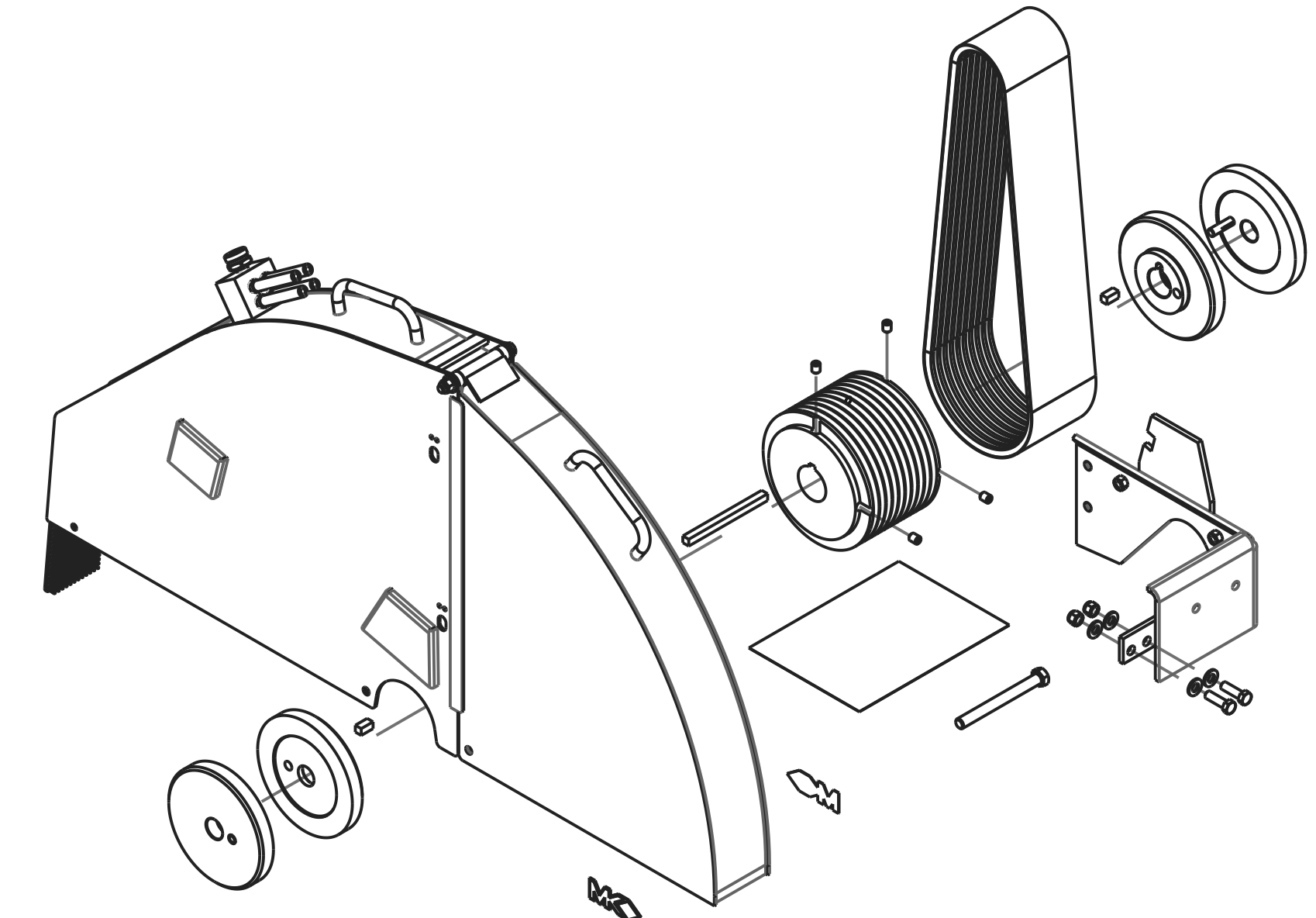
170610-6020 KIT, BLADE GUARD, 20", 6020KB
SEE PAGE 7



170610-6026 KIT, BLADE GUARD, 26", 6026KB
SEE PAGE 8



170610-6030 KIT, BLADE GUARD, 30", 6030KB
SEE PAGE 9



170610-6036 KIT, BLADE GUARD, 36", 6036KB
SEE PAGE 10

NOTES:
1. PERFORM ALL ASSEMBLY IN COMPLIANCE WITH WORK INSTRUCTIONS FOR 170610, INCLUDING SERIALIZATION AND PLACEMENT OF LABELS.

QTY. REQ.	PART OR IDENTIFYING NO.	DESCRIPTION	ITEM NO.
PARTS LIST			
TOLERANCES UNLESS OTHERWISE SPECIFIED		DATE	
DIMENSIONS ARE IN INCHES		DRAWN	SMH 04/23/13
WHOLE NO. AND FRACTIONS = 1/16 (EXCEPT DRILL HOLES)		CHECK	SMH 04/23/13
X = ±.03		DESIGN	SMH 04/23/13
XX = ±.010		NEXT ASSY.	
XXX = ±.005		-	
ANGLES = ±1/2°		 MK DIAMOND PRODUCTS INC. 1315 STORM PARKWAY TORRANCE, CA. 90509	
DO NOT SCALE DRAWING		MK LARGE CONCRETE SAW KIT, BLADE GUARD, 4/6000KB/G PARENT	
SCALE: 0:150	APPLICATION	SIZE D PART NO. 170610 DWG. NO. 170610 REV. B	SHEET: 1 of 15

A

B

C

D

E

F

G

H

I

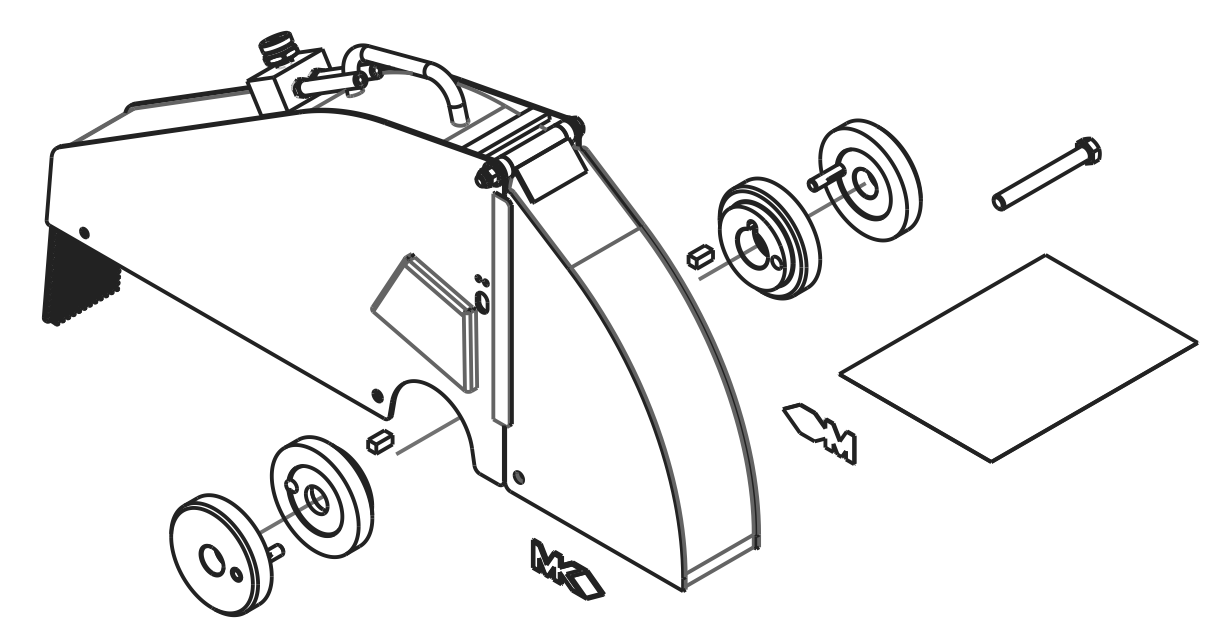
J

ZONE		REV.		REVISIONS		DATE	APPROVED
				DESCRIPTION			

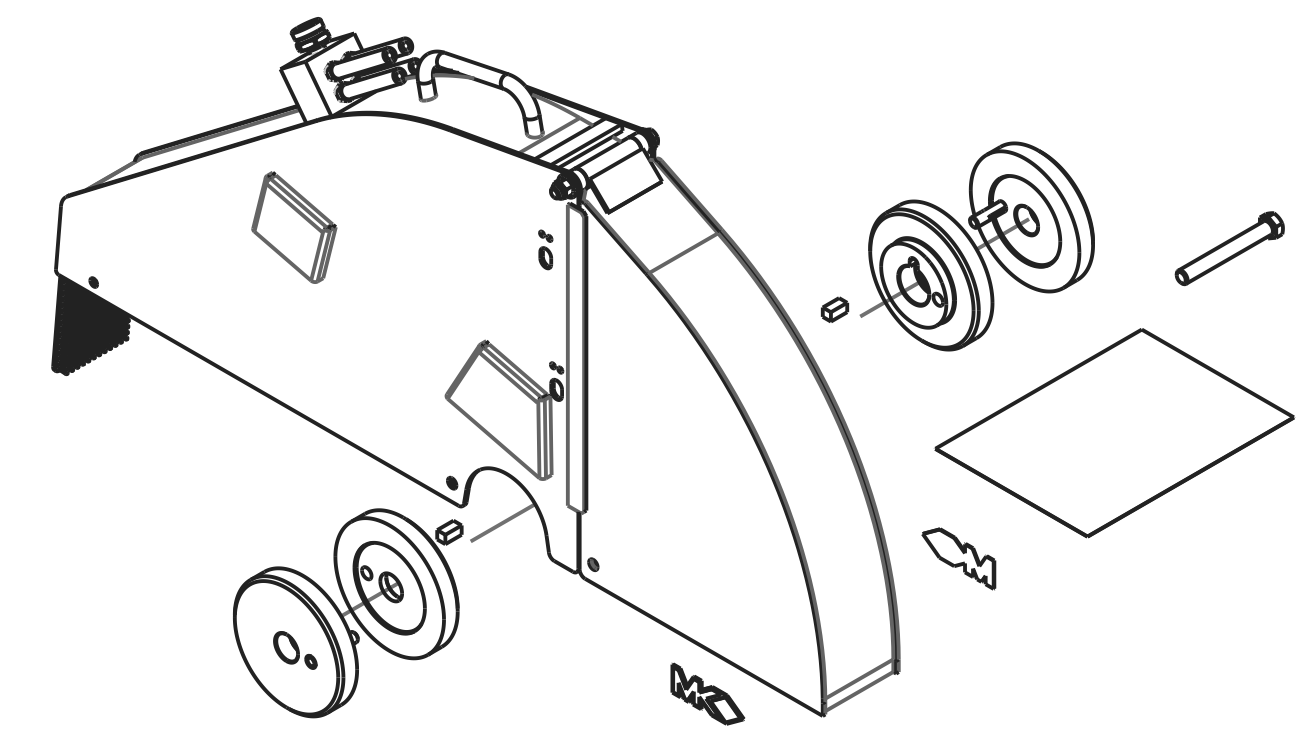
ROW 3:
BLADEGUARD KITS FOR MK-4000KBG AND MK-6000KBG THREE SPEED GEARBOX SAWS.

1

2



170610-20G KIT, BLADE GUARD, 20", 4/6020KBG
SEE PAGE 11

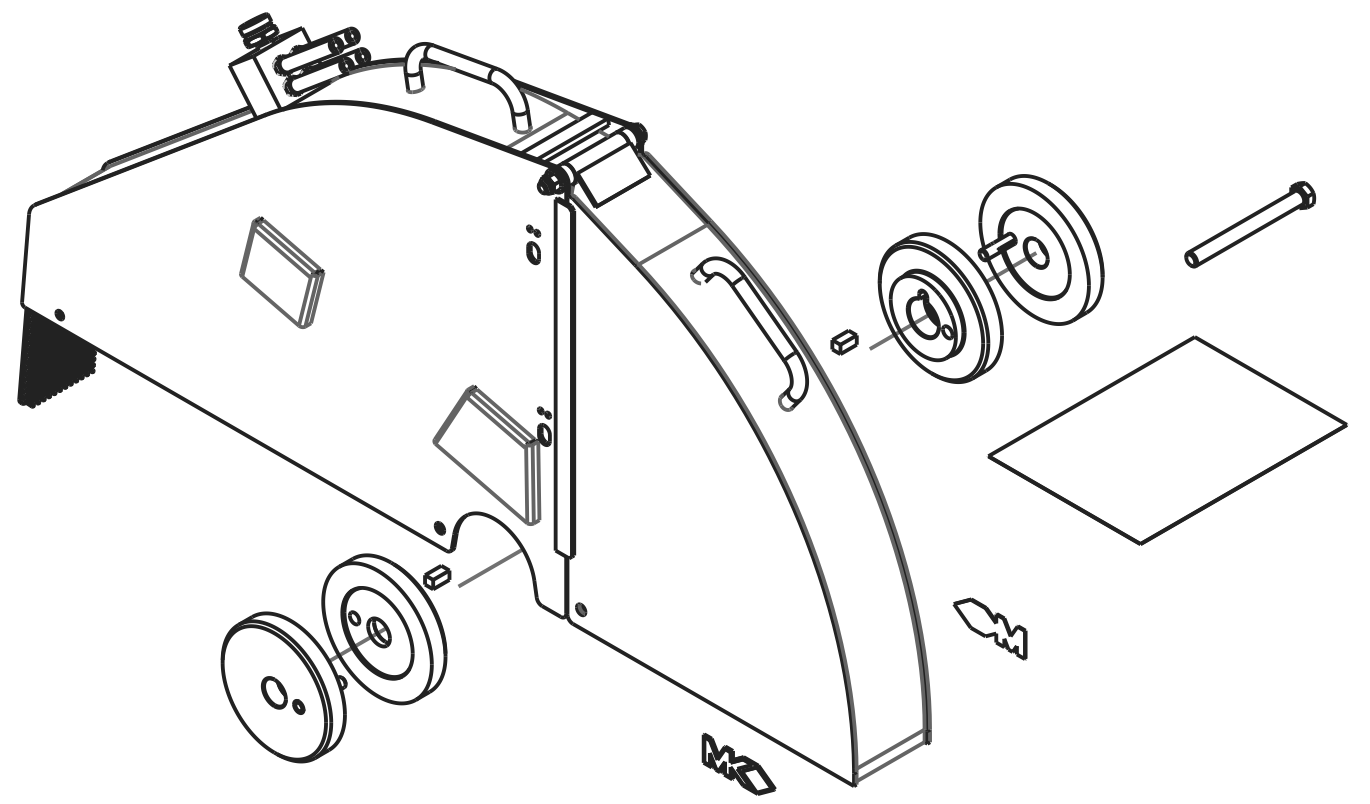


170610-26G KIT, BLADE GUARD, 26", 4/6026KBG
SEE PAGE 12

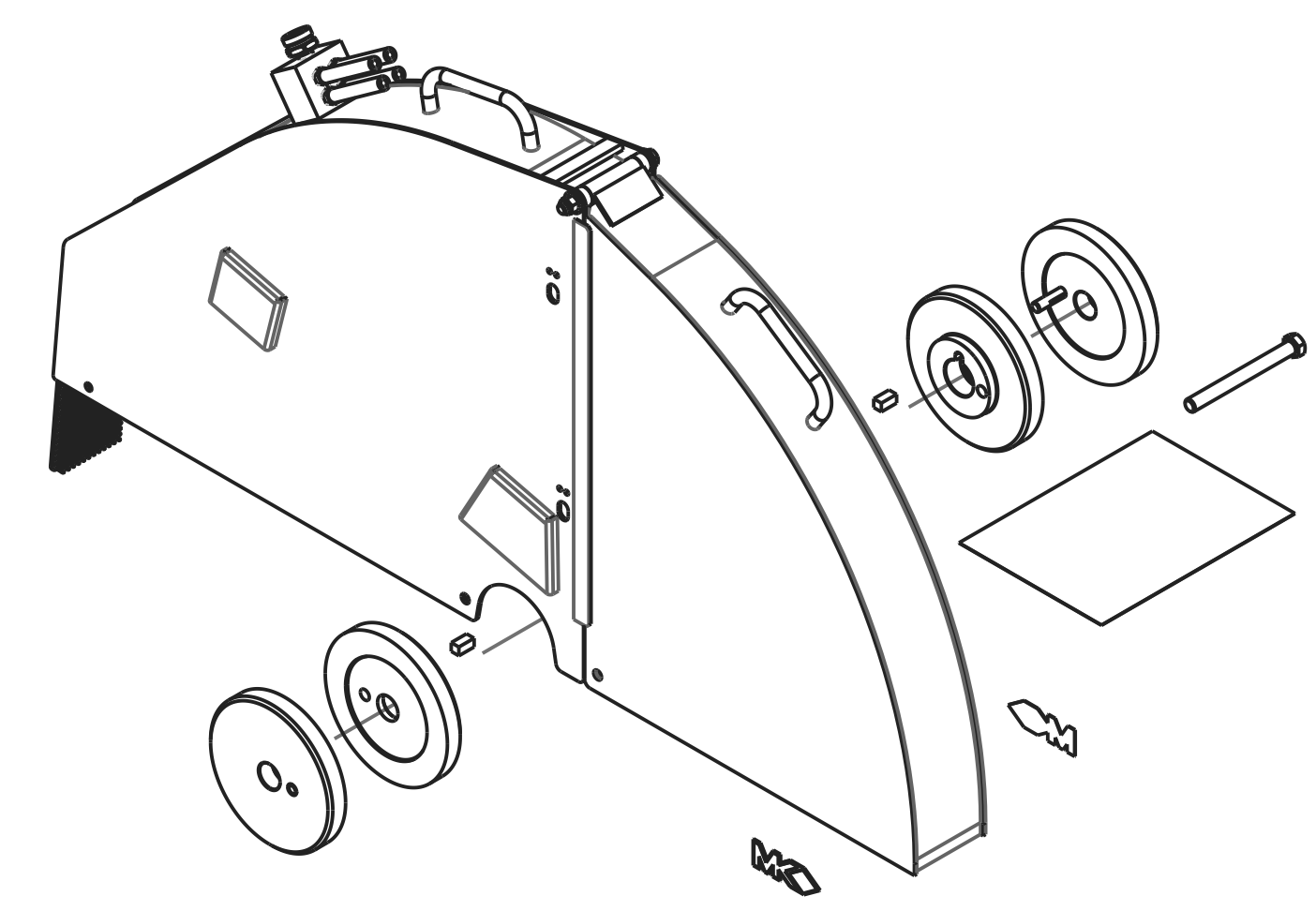
ROW 4:
BLADEGUARD KITS FOR MK-4000KBG AND MK-6000KBG THREE SPEED GEARBOX SAWS.

3

4

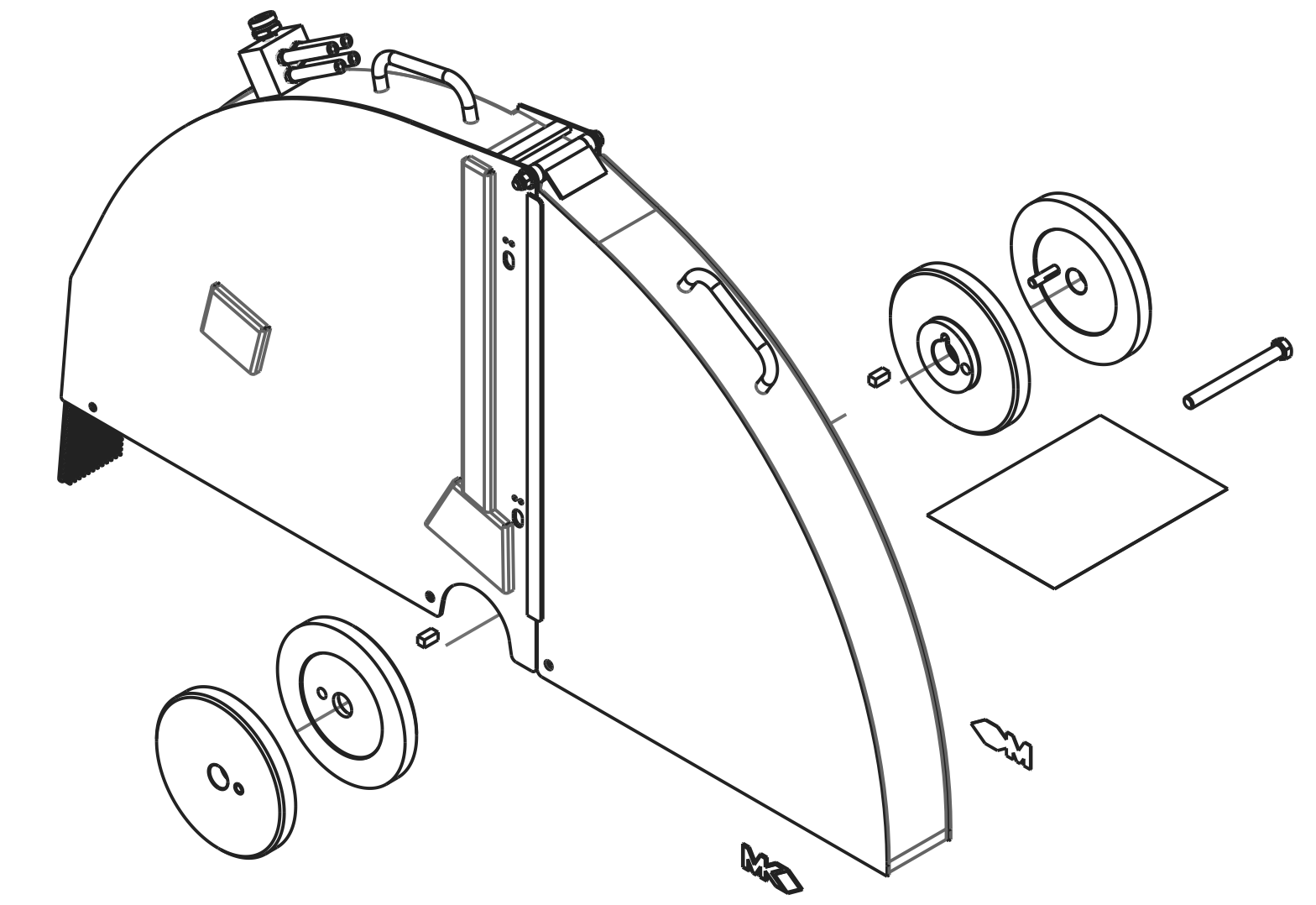


170610-30G KIT, BLADE GUARD, 30", 4/6030KBG
SEE PAGE 13




170610-36G KIT, BLADE GUARD, 36", 4/6036KBG
SEE PAGE 14

NOTE:
THIS KIT IS FOR MK-6000KBG ONLY, AS LARGEST BLADE GUARD SIZE FOR 4000 IS 36".



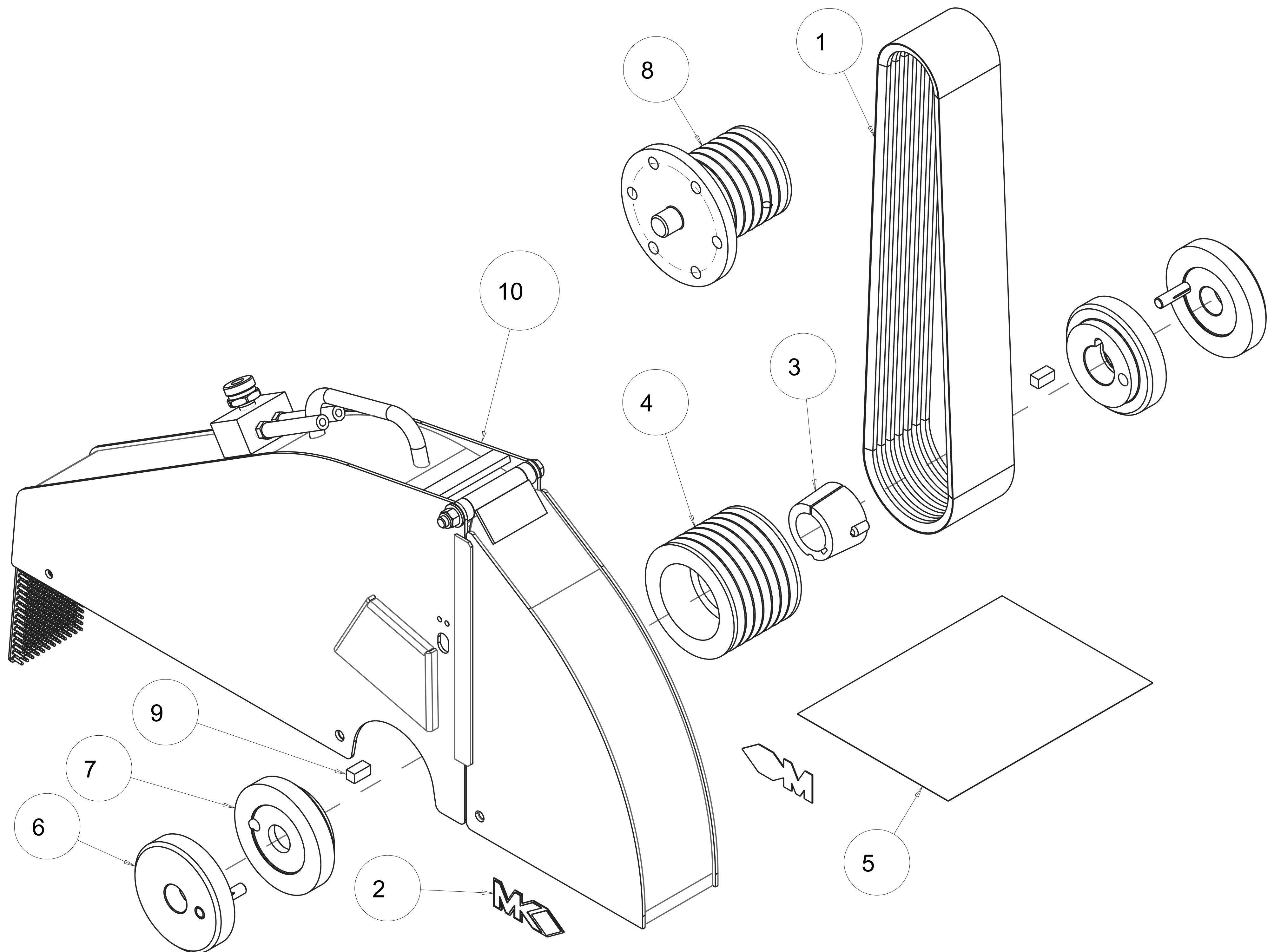
170610-42G KIT, BLADE GUARD, 42", 6042KBG
SEE PAGE 15

5

QTY. REQ.	PART OR IDENTIFYING NO.	DESCRIPTION	ITEM NO.
PARTS LIST			
TOLERANCES UNLESS OTHERWISE SPECIFIED		DATE	
DIMENSIONS ARE IN INCHES		DRAWN	
WHOLE NO. AND FRACTIONS = 1/16 (EXCEPT DRILL HOLES)		CHECK	
X = ± .03		DESIGN	
XX = ± .010		NEXT ASSY.	
XXX = ± .005		-	
ANGLES = ± 1/2°		 MK DIAMOND PRODUCTS INC. 1315 STORM PARKWAY TORRANCE, CA. 90509	
DO NOT SCALE DRAWING		MK LARGE CONCRETE SAW KIT, BLADE GUARD, 4/6000KB/G PARENT	
APPLICATION		SIZE D PART NO. 170610 DWG. NO. 170610 REV. B	
SCALE: 1:000		SHEET: 2 of 15	

A B C D E F G H I J

REVISIONS				
ZONE	REV.	DESCRIPTION	DATE	APPROVED



QTY. REQ.	PART OR IDENTIFYING NO.	DESCRIPTION	ITEM NO.
1	170173-20	ASSY, BLADE GUARD 20"	10
2	169371	KEY, SQR, 3/8 X 3/4	9
1	169356-32	PULLEY, 7/3VX/3.2 KB	8
2	168598-4	FLANGE, KEYED, INNER, 4"	7
2	168596-4	ASSY, FLANGE, KEYED, OUTER, 4"	6
1	166009	ASSY, WARNING LABELS, CONCRETE	5
1	165695	PULLEY, 7/3VX/4.12 X 1615TB	4
1	160811	BUSHING, TPR-LOCK, 1615 X 1-3/8	3
2	157914	LOGO, MK ADHESIVE	2
1	138172-7	BELT, 7/3VX425	1

TOLERANCES UNLESS OTHERWISE SPECIFIED		DATE	
DIMENSIONS ARE IN INCHES		DRAWN	
WHOLE NO. AND FRACTIONS = 1/16 (EXCEPT DRILL HOLES)		CHECK	
X = ±.03		DESIGN	
XX = ±.010		NEXT ASSY.	
XXX = ±.005		PROPRIETARY NOTICE: THIS DRAWING AND INFORMATION IT CONTAINS ARE THE PROPERTY OF MK DIAMOND INC. AND ARE CONSIDERED CONFIDENTIAL AND MAY NOT BE REPRODUCED, COPIED, OR USED IN PART OR IN WHOLE WITHOUT THE WRITTEN CONSENT OF MK DIAMOND PRODUCTS INC.	
ANGLES = ±1/2°			
DO NOT SCALE DRAWING		APPLICATION	



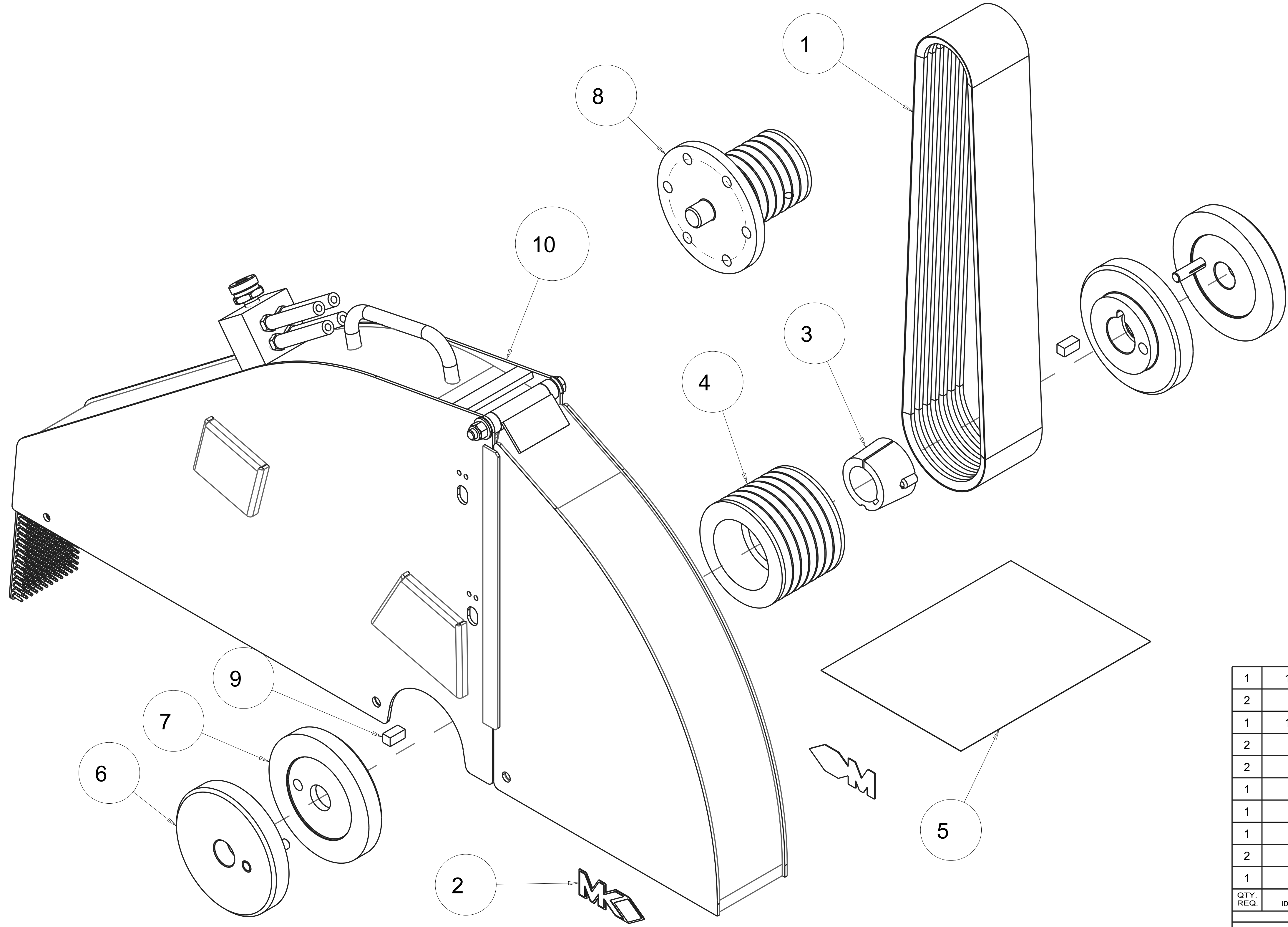
MK DIAMOND PRODUCTS INC.
1315 STORM PARKWAY
TORRANCE, CA. 90509

MK LARGE CONCRETE SAW KIT, BLADE GUARD, 20", 4020KB

SIZE	PART NO.	DWG. NO.	REV.
D	170610-4020	170610-4020	B

SCALE: 0.500 SHEET: 3 of 15

ZONE		REV.	REVISIONS	DESCRIPTION	DATE	APPROVED



QTY. REQ.	PART OR IDENTIFYING NO.	DESCRIPTION	ITEM NO.
1	170173-26	ASSY, BLADE GUARD 26"	10
2	169371	KEY, SQR, 3/8 X 3/4	9
1	169356-28	PULLEY, 7/3VX/2.8 KB	8
2	168598-5	FLANGE, KEYED, INNER, 5"	7
2	168596-5	ASSY, FLANGE, KEYED, OUTER, 5"	6
1	166009	ASSY, WARNING LABELS, CONCRETE	5
1	165695	PULLEY, 7/3VX/4.12 X 1615TB	4
1	160811	BUSHING, TPR-LOCK, 1615 X 1-3/8	3
2	157914	LOGO, MK ADHESIVE	2
1	138172-7	BELT, 7/3VX425	1

TOLERANCES UNLESS OTHERWISE SPECIFIED		DATE	
DIMENSIONS ARE IN INCHES		DRAWN	
WHOLE NO. AND FRACTIONS = 1/16 (EXCEPT DRILL HOLES)		CHECK	
X = ±.03		DESIGN	
XX = ±.010		NEXT ASSY.	
XXX = ±.005		-	
ANGLES = ±1/2°		<p>PROPRIETARY NOTICE: THIS DRAWING AND INFORMATION IT CONTAINS ARE THE PROPERTY OF MK DIAMOND INC. AND ARE CONSIDERED CONFIDENTIAL AND MAY NOT BE REPRODUCED, COPIED, OR USED IN PART OR IN WHOLE WITHOUT THE WRITTEN CONSENT OF MK DIAMOND PRODUCTS INC.</p>	
DO NOT SCALE DRAWING		APPLICATION	SCALE: 0:167



MK DIAMOND PRODUCTS INC.
1315 STORM PARKWAY
TORRANCE, CA. 90509

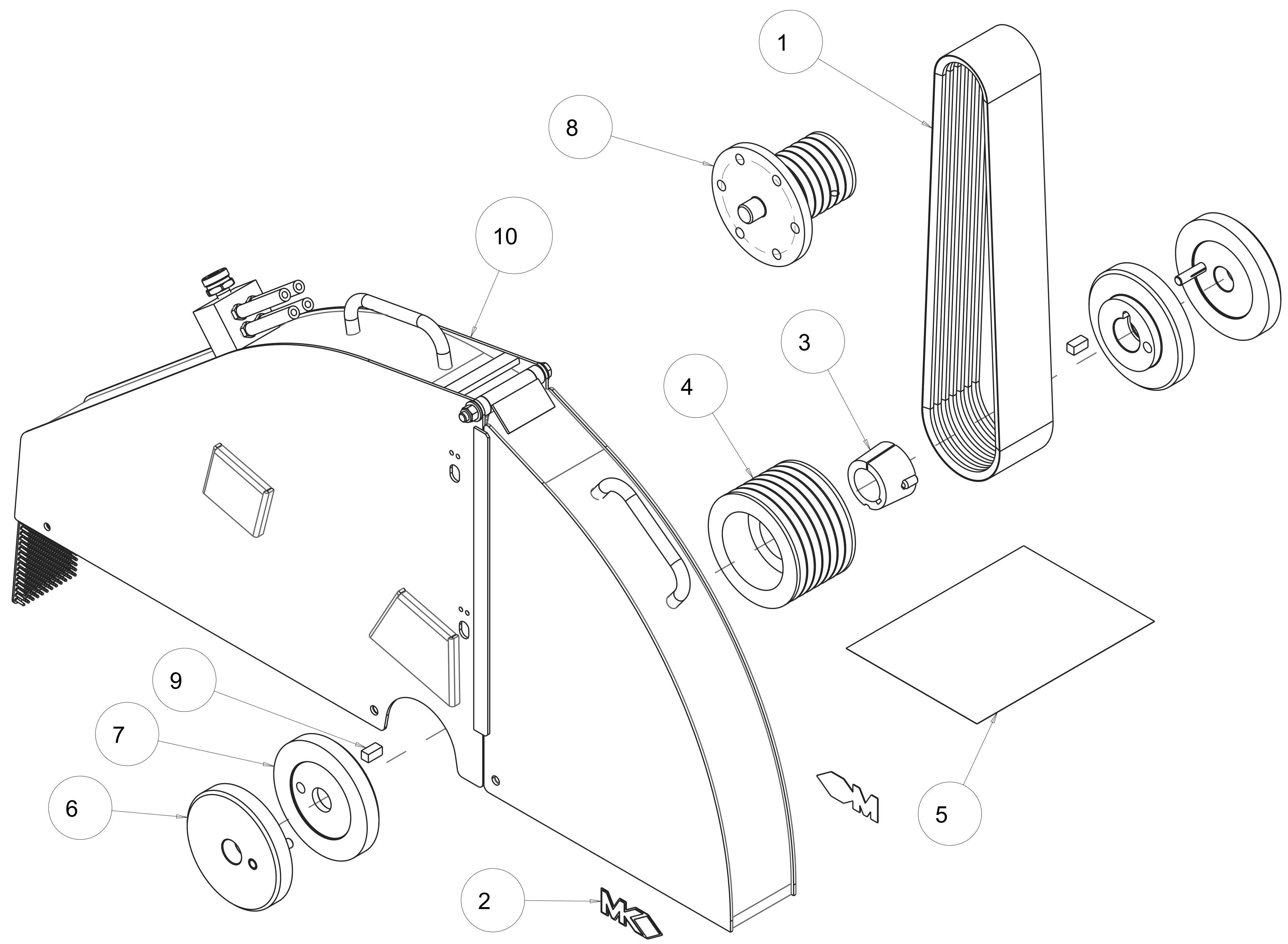
MK LARGE CONCRETE SAW KIT, BLADE GUARD, 26", 4026KB

SIZE	PART NO.	DWG. NO.	REV.
D	170610-4026	170610-4026	B

1
2
3
4
5

A B C D E F G H I J

REVISIONS				
ZONE	REV.	DESCRIPTION	DATE	APPROVED



QTY. REQ.	PART OR IDENTIFYING NO.	DESCRIPTION	ITEM NO.
1	170173-30	ASSY, BLADE GUARD 30"	10
2	169371	KEY, SQR, 3/8 X 3/4	9
1	169356-28	PULLEY, 7/3VX/2.8 KB	8
2	168598-5	FLANGE, KEYED, INNER, 5"	7
2	168596-5	ASSY, FLANGE, KEYED, OUTER, 5"	6
1	166009	ASSY, WARNING LABELS, CONCRETE	5
1	165696	PULLEY, 7/3VX/4.75 X 1615TB	4
1	160811	BUSHING, TPR-LOCK, 1615 X 1-3/8	3
2	157914	LOGO, MK ADHESIVE	2
1	138172-7	BELT, 7/3VX425	1

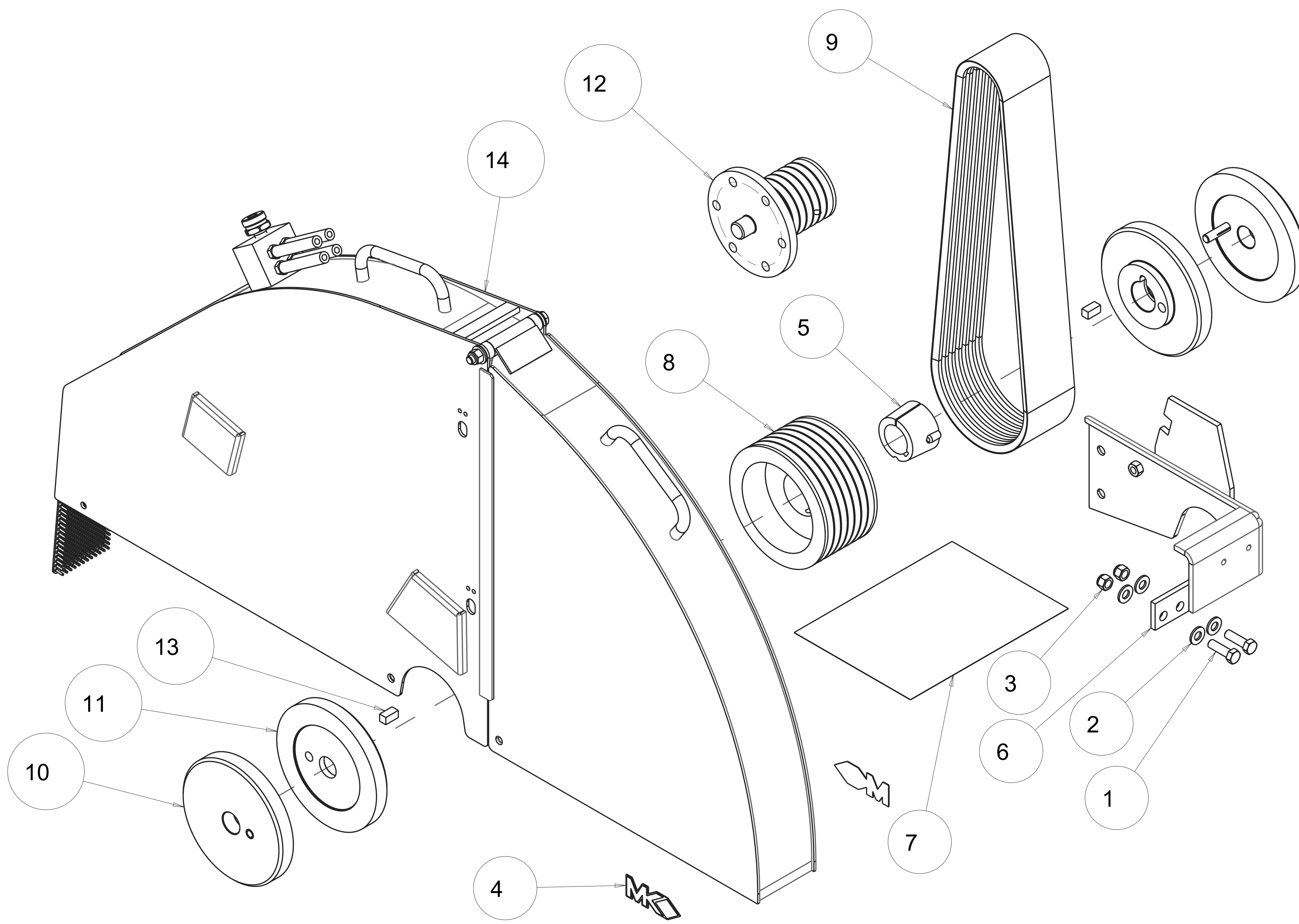
TOLERANCES UNLESS OTHERWISE SPECIFIED		DATE	
WHOLE NO. AND FRACTIONS = 1/16 (EXCEPT DRILL HOLES)	DRAWN		
X = ± .03	CHECK		
XX = ± .010	DESIGN		
XXX = ± .005	NEXT ASSY.		
ANGLES = ± 1/2°	PROPRIETARY NOTICE: THIS DRAWING AND INFORMATION IT CONTAINS ARE THE PROPERTY OF MK DIAMOND INC. AND ARE CONSIDERED CONFIDENTIAL AND MAY NOT BE REPRODUCED, COPIED, OR USED IN PART OR IN WHOLE WITHOUT THE WRITTEN CONSENT OF MK DIAMOND PRODUCTS INC.		
DO NOT SCALE DRAWING	APPLICATION	SCALE: 0:167	SHEET: 5 of 15

MK MK DIAMOND PRODUCTS INC.
1315 STORM PARKWAY
TORRANCE, CA. 90509

MK LARGE CONCRETE SAW KIT, BLADE GUARD, 30", 4030KB

SIZE: **D** PART NO. **170610-4030** DWG. NO. **170610-4030** REV. **B**

ZONE		REV	REVISIONS	DESCRIPTION	DATE	APPROVED

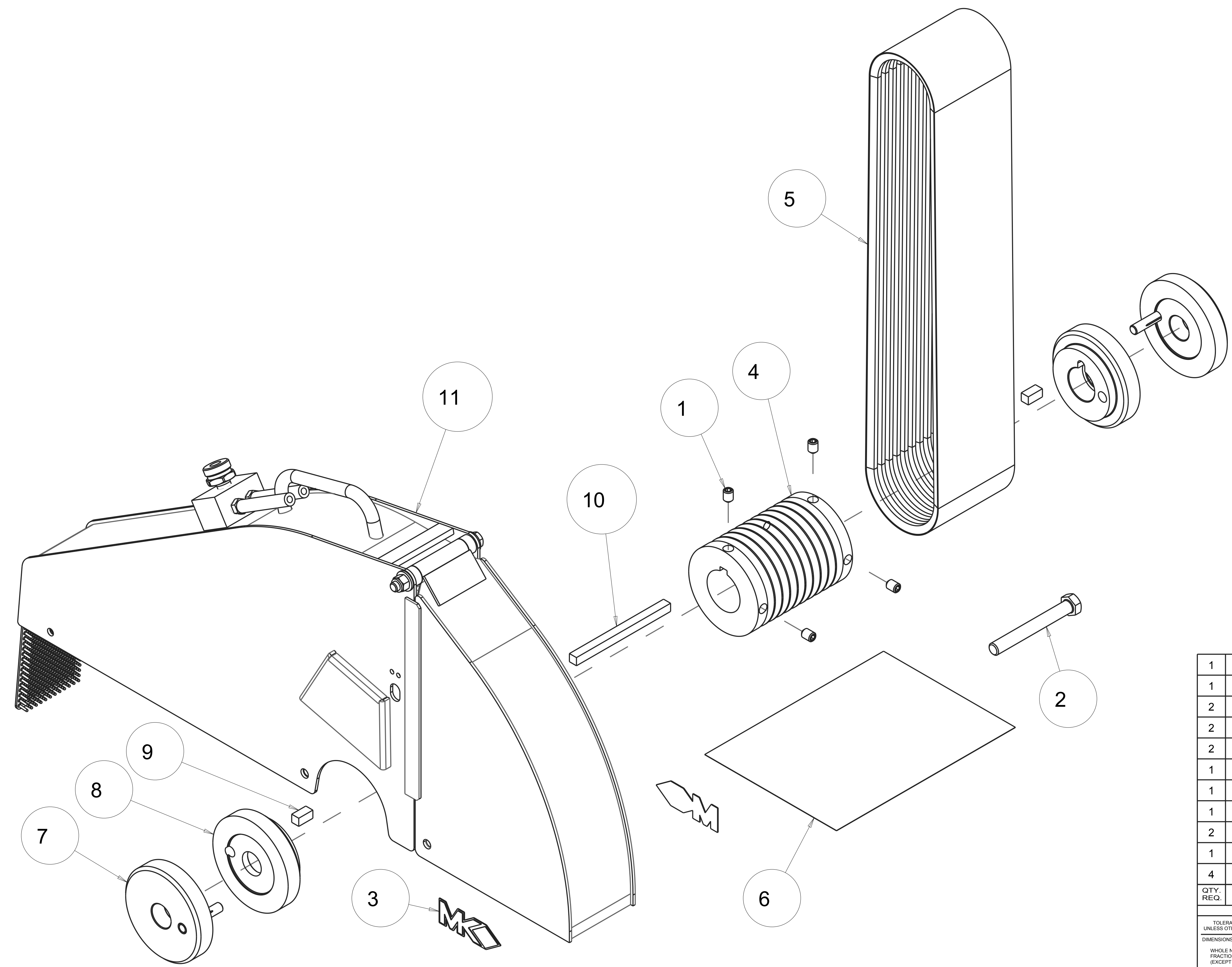


QTY. REQ.	PART OR IDENTIFYING NO.	DESCRIPTION	ITEM NO.
1	170173-36	ASSY, BLADE GUARD 36"	14
2	169371	KEY, SQR, 3/8 X 3/4	13
1	169356-28	PULLEY, 7/3VX/2.8 KB	12
2	168598-6	FLANGE, KEYED, INNER, 6"	11
2	168596-6	ASSY, FLANGE, KEYED, OUTER, 6"	10
1	167527-7	BELT, 7/3VX450	9
1	167278	PULLEY, 7/3VX/5.75 X 1615TB	8
1	166009	ASSY, WARNING LABELS, CONCRETE	7
1	165871-36	CORNER, FRAME, 36" BG	6
1	160811	BUSHING, TPR-LOCK, 1615 X 1-3/8	5
2	157914	LOGO, MK ADHESIVE	4
2	152505	NUT, HEX, NYLK, 3/8-16	3
4	150923	WASHER, FLAT, SAE, 3/8	2
2	150774	SCREW, 3/8-16 X 1-1/4 HEX HEAD CAP	1

TOLERANCES UNLESS OTHERWISE SPECIFIED DIMENSIONS ARE IN INCHES WHOLE NO. AND FRACTIONS = 1/16 (EXCEPT DRILL HOLES) X = ±.03 XX = ±.010 XXX = ±.005 ANGLES = ±1/2°		DATE DRAWN CHECK DESIGN NEXT ASSY.		MK DIAMOND PRODUCTS INC. 1315 STORM PARKWAY TORRANCE, CA. 90509
PROPRIETARY NOTICE: THIS DRAWING AND INFORMATION IT CONTAINS ARE THE PROPERTY OF MK DIAMOND INC. AND ARE CONSIDERED CONFIDENTIAL AND MAY NOT BE REPRODUCED, COPIED, OR USED IN PART OR IN WHOLE WITHOUT THE WRITTEN CONSENT OF MK DIAMOND PRODUCTS INC.		MK LARGE CONCRETE SAW KIT, BLADE GUARD, 36", 4036KB		
DO NOT SCALE DRAWING		APPLICATION		SCALE: 0:167
SHEET: 6 of 15		PART NO. 170610-4036 DWG. NO. 170610-4036		REV. B

A B C D E F G H I J

ZONE		REV	REVISIONS	DESCRIPTION	DATE	APPROVED



QTY. REQ.	PART OR IDENTIFYING NO.	DESCRIPTION	ITEM NO.
1	170173-20	ASSY, BLADE GUARD 20"	11
1	169566	KEY, 3/8 SQUARE X 5	10
2	169371	KEY, SQR, 3/8 X 3/4	9
2	168598-4	FLANGE, KEYED, INNER, 4"	8
2	168596-4	ASSY, FLANGE, KEYED, OUTER, 4"	7
1	166009	ASSY, WARNING LABELS, CONCRETE	6
1	165689-10_1	BELT, 10/3VX475	5
1	165464	PULLEY, 103VX3.7 X 1-3/4BORE	4
2	157914	LOGO, MK ADHESIVE	3
1	156626	SCREW,HEX HD,TAP,1/2-13 X 4	2
4	153710	SCREW,SET,SOC,CUPT,3/8-16X1/2	1

TOLERANCES UNLESS OTHERWISE SPECIFIED		DATE	
DIMENSIONS ARE IN INCHES		DRAWN	
WHOLE NO. AND FRACTIONS = 1/16 (EXCEPT DRILL HOLES)		CHECK	
X = ± .03		DESIGN	
XX = ± .010		NEXT ASSY.	
XXX = ± .005			
ANGLES = ± 1/2°			
DO NOT SCALE DRAWING		APPLICATION	

PROPRIETARY NOTICE: THIS DRAWING AND INFORMATION IT CONTAINS ARE THE PROPERTY OF MK DIAMOND INC. AND ARE CONSIDERED CONFIDENTIAL AND MAY NOT BE REPRODUCED, COPIED, OR USED IN PART OR IN WHOLE WITHOUT THE WRITTEN CONSENT OF MK DIAMOND PRODUCTS INC.

MK DIAMOND PRODUCTS INC.
1315 STORM PARKWAY
TORRANCE, CA. 90509

MK LARGE CONCRETE SAW KIT, BLADE GUARD, 20", 6020KB

SIZE	PART NO.	DWG. NO.	REV.
D	170610-6020	170610-6020	B

SCALE: 1:000 SHEET: 7 of 15

A

B

C

D

E

F

G

H

I

J

REVISIONS			
ZONE	REV	DESCRIPTION	DATE

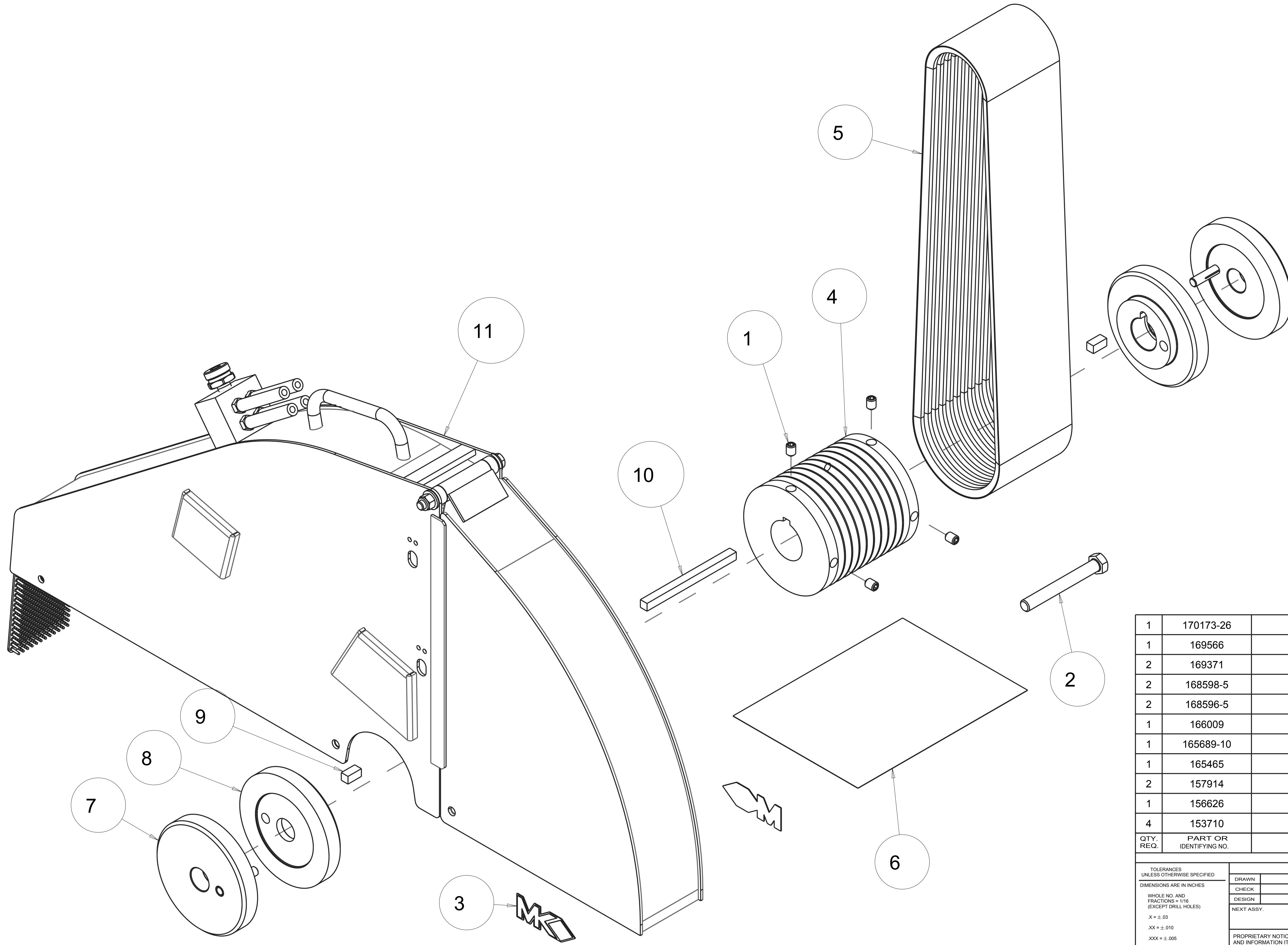
1

2

3

4

5



QTY. REQ.	PART OR IDENTIFYING NO.	DESCRIPTION	ITEM NO.
1	170173-26	ASSY, BLADE GUARD 26"	11
1	169566	KEY, 3/8 SQUARE X 5	10
2	169371	KEY, SQR, 3/8 X 3/4	9
2	168598-5	FLANGE, KEYED, INNER, 5"	8
2	168596-5	ASSY, FLANGE, KEYED, OUTER, 5"	7
1	166009	ASSY, WARNING LABELS, CONCRETE	6
1	165689-10	BELT, 10/3VX475	5
1	165465	PULLEY, 103VX4.8 X 1-3/4BORE	4
2	157914	LOGO, MK ADHESIVE	3
1	156626	SCREW,HEX HD,TAP,1/2-13 X 4	2
4	153710	SCREW,SET,SOC,CUPT,3/8-16X1/2	1

TOLERANCES UNLESS OTHERWISE SPECIFIED		DATE	
DIMENSIONS ARE IN INCHES		DRAWN	
WHOLE NO. AND FRACTIONS = 1/16 (EXCEPT DRILL HOLES)		CHECK	
X = ± .03		DESIGN	
XX = ± .010		NEXT ASSY.	
XXX = ± .005			
ANGLES = ± 1/2°			
DO NOT SCALE DRAWING		APPLICATION	



MK DIAMOND PRODUCTS INC.
1315 STORM PARKWAY
TORRANCE, CA. 90509

MK LARGE CONCRETE SAW KIT, BLADE GUARD, 26", 6026BK

SIZE	PART NO.	DWG. NO.	REV.
D	170610-6026	170610-6026	B

SCALE: 1:000 SHEET: 8 of 15

A

B

C

D

E

F

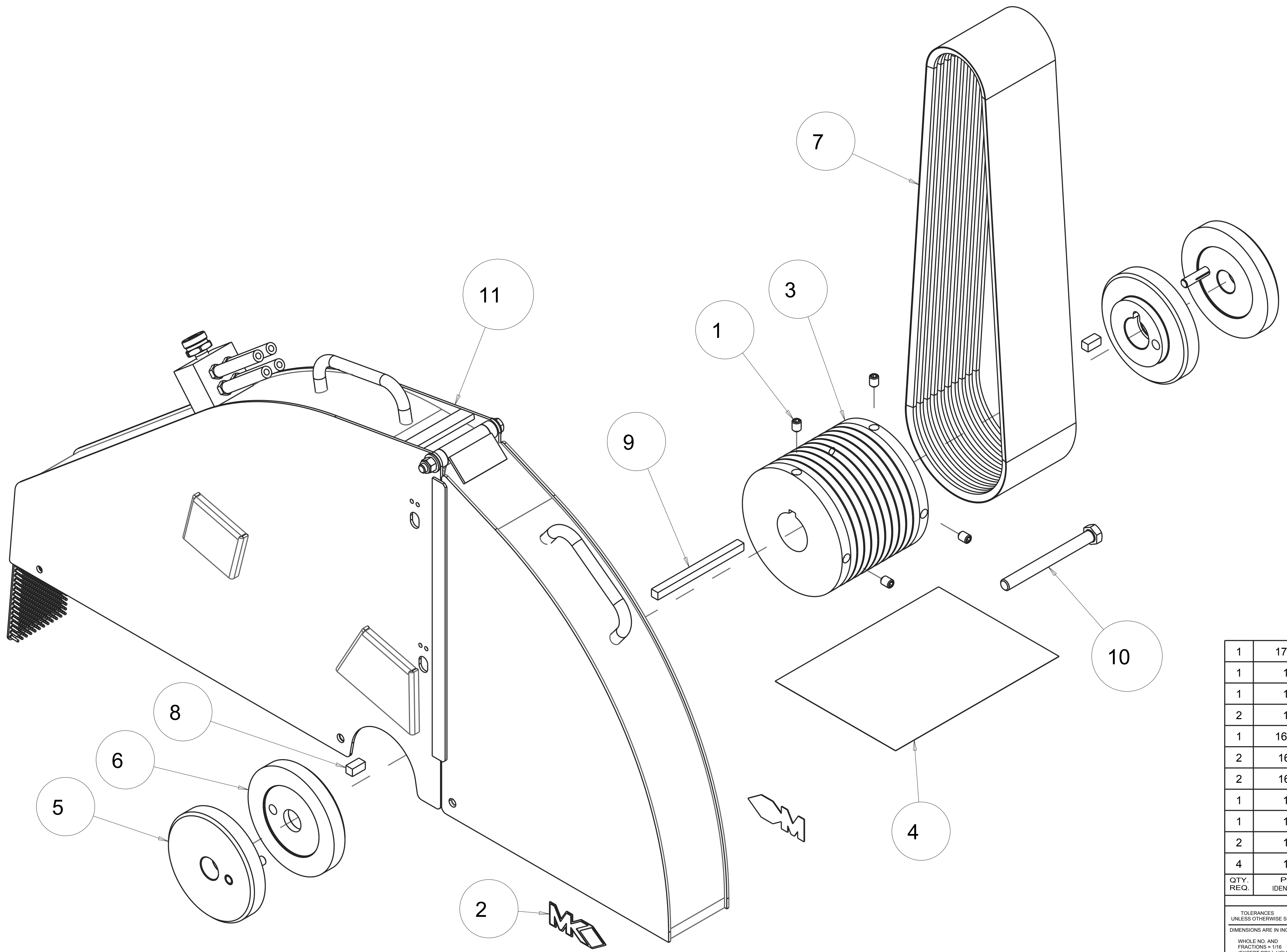
G

H

I

J

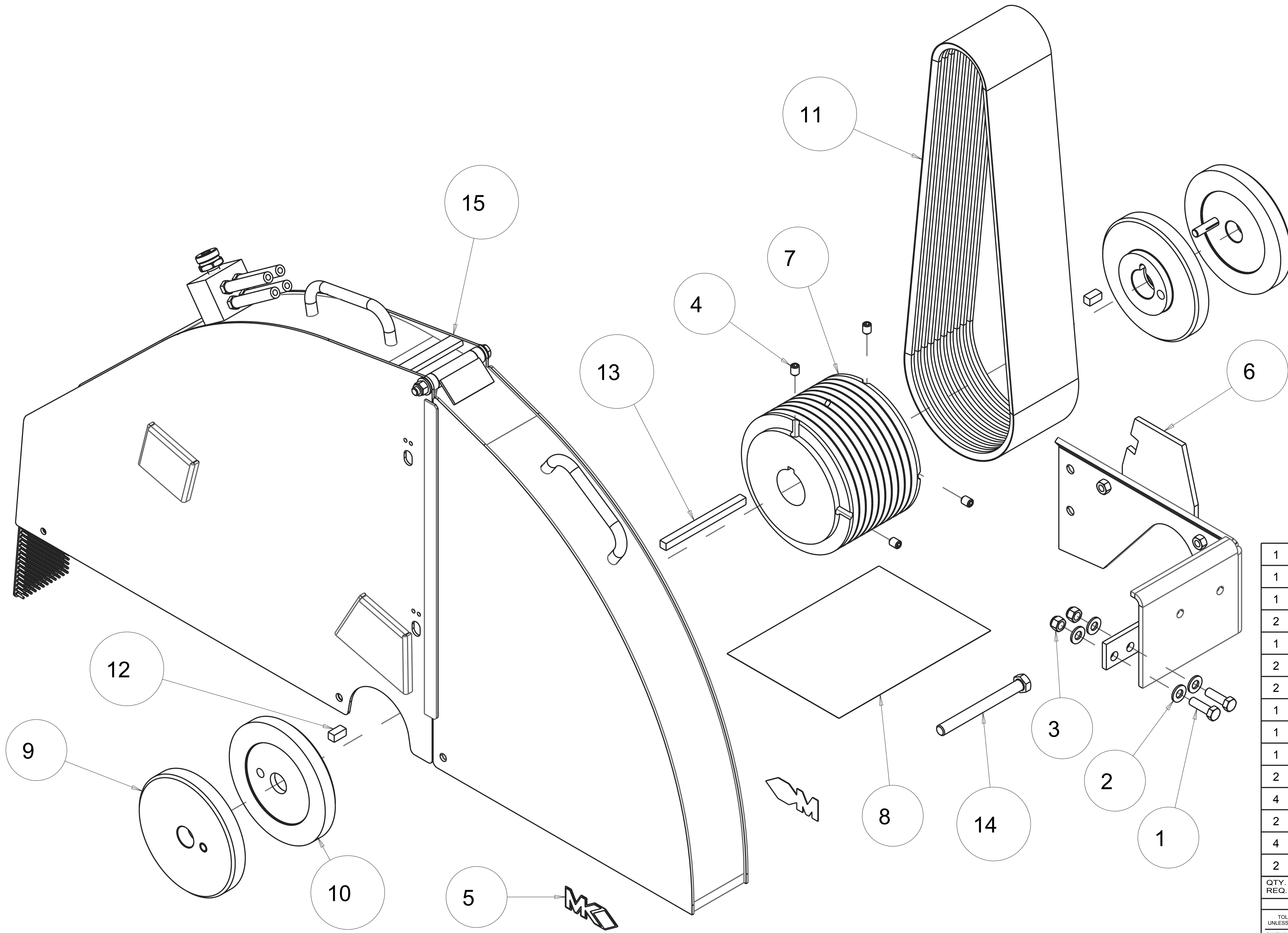
REVISIONS				
ZONE	REV	DESCRIPTION	DATE	APPROVED



QTY. REQ.	PART OR IDENTIFYING NO.	DESCRIPTION	ITEM NO.
1	170173-30	ASSY, BLADE GUARD 30"	11
1	169570	SCREW, HEX HD, TAP, 1/2-13 X 5	10
1	169566	KEY, 3/8 SQUARE X 5	9
2	169371	KEY, SQR, 3/8 X 3/4	8
1	169214-10	BELT, 10/3VX500	7
2	168598-5	FLANGE, KEYED, INNER, 5"	6
2	168596-5	ASSY, FLANGE, KEYED, OUTER, 5"	5
1	166009	ASSY, WARNING LABELS, CONCRETE	4
1	165466	PULEY, 103VX5.8 X 1-3/4BORE	3
2	157914	LOGO, MK ADHESIVE	2
4	153710	SCREW, SET, SOC, CUPT, 3/8-16X1/2	1

TOLERANCES UNLESS OTHERWISE SPECIFIED		DATE		 MK DIAMOND PRODUCTS INC. 1315 STORM PARKWAY TORRANCE, CA. 90509
DIMENSIONS ARE IN INCHES		DRAWN		
WHOLE NO. AND FRACTIONS = 1/16 (EXCEPT DRILL HOLES)		CHECK		
X = ± .03 XX = ± .010 XXX = ± .005 ANGLES = ± 1/2°		DESIGN		
DO NOT SCALE DRAWING		NEXT ASSY.		MK LARGE CONCRETE SAW KIT, BLADE GUARD, 30", 6030KB
APPLICATION		PROPRIETARY NOTICE: THIS DRAWING AND INFORMATION IT CONTAINS ARE THE PROPERTY OF MK DIAMOND INC. AND ARE CONSIDERED CONFIDENTIAL AND MAY NOT BE REPRODUCED, COPIED, OR USED IN PART OR IN WHOLE WITHOUT THE WRITTEN CONSENT OF MK DIAMOND PRODUCTS INC.		
SCALE: 1:000		SIZE	REV	
		D 170610-6030	B	PART NO. 170610-6030 DWG. NO. 170610-6030
		SHEET: 9 of 15		

REVISIONS				
ZONE	REV	DESCRIPTION	DATE	APPROVED



QTY. REQ.	PART OR IDENTIFYING NO.	DESCRIPTION	ITEM NO.
1	170173-36	ASSY, BLADE GUARD 36"	15
1	169570	SCREW,HEX HD,TAP,1/2-13 X 5	14
1	169566	KEY, 3/8 SQUARE X 5	13
2	169371	KEY, SQR, 3/8 X 3/4	12
1	169214-10_1	BELT, 10/3VX500	11
2	168598-6	FLANGE, KEYED, INNER, 6"	10
2	168596-6	ASSY, FLANGE, KEYED, OUTER, 6"	9
1	166009	ASSY, WARNING LABELS, CONCRETE	8
1	165467	PULEY, 103VX6.8 X 1-3/4BORE	7
1	165458-36	CORNER, FRAME, 36"	6
2	157914	LOGO, MK ADHESIVE	5
4	153710	SCREW,SET,SOC,CUPT,3/8-16X1/2	4
2	152505	NUT,HEX,NYLK,3/8-16	3
4	150923	WASHER, FLAT, SAE, 3/8	2
2	150774	SCREW, 3/8-16 X 1-1/4 HEX HEAD CAP	1

TOLERANCES UNLESS OTHERWISE SPECIFIED		DATE	
DIMENSIONS ARE IN INCHES		DRAWN	
WHOLE NO. AND FRACTIONS = 1/16 (EXCEPT DRILL HOLES)		CHECK	
X = ±.03		DESIGN	
XX = ±.010		NEXT ASSY.	
XXX = ±.005		PROPRIETARY NOTICE: THIS DRAWING AND INFORMATION IT CONTAINS ARE THE PROPERTY OF MK DIAMOND INC. AND ARE CONSIDERED CONFIDENTIAL AND MAY NOT BE REPRODUCED, COPIED, OR USED IN PART OR IN WHOLE WITHOUT THE WRITTEN CONSENT OF MK DIAMOND PRODUCTS INC.	
ANGLES = ±1/2°			



MK DIAMOND PRODUCTS INC.
1315 STORM PARKWAY
TORRANCE, CA. 90509

MK LARGE CONCRETE SAW KIT, BLADE GUARD, 36", 6036KB

SIZE	PART NO.	DWG. NO.	REV.
D	170610-6036	170610-6036	B

DO NOT SCALE DRAWING APPLICATION SCALE: 1:000 SHEET: 10 of 15

A

B

C

D

E

F

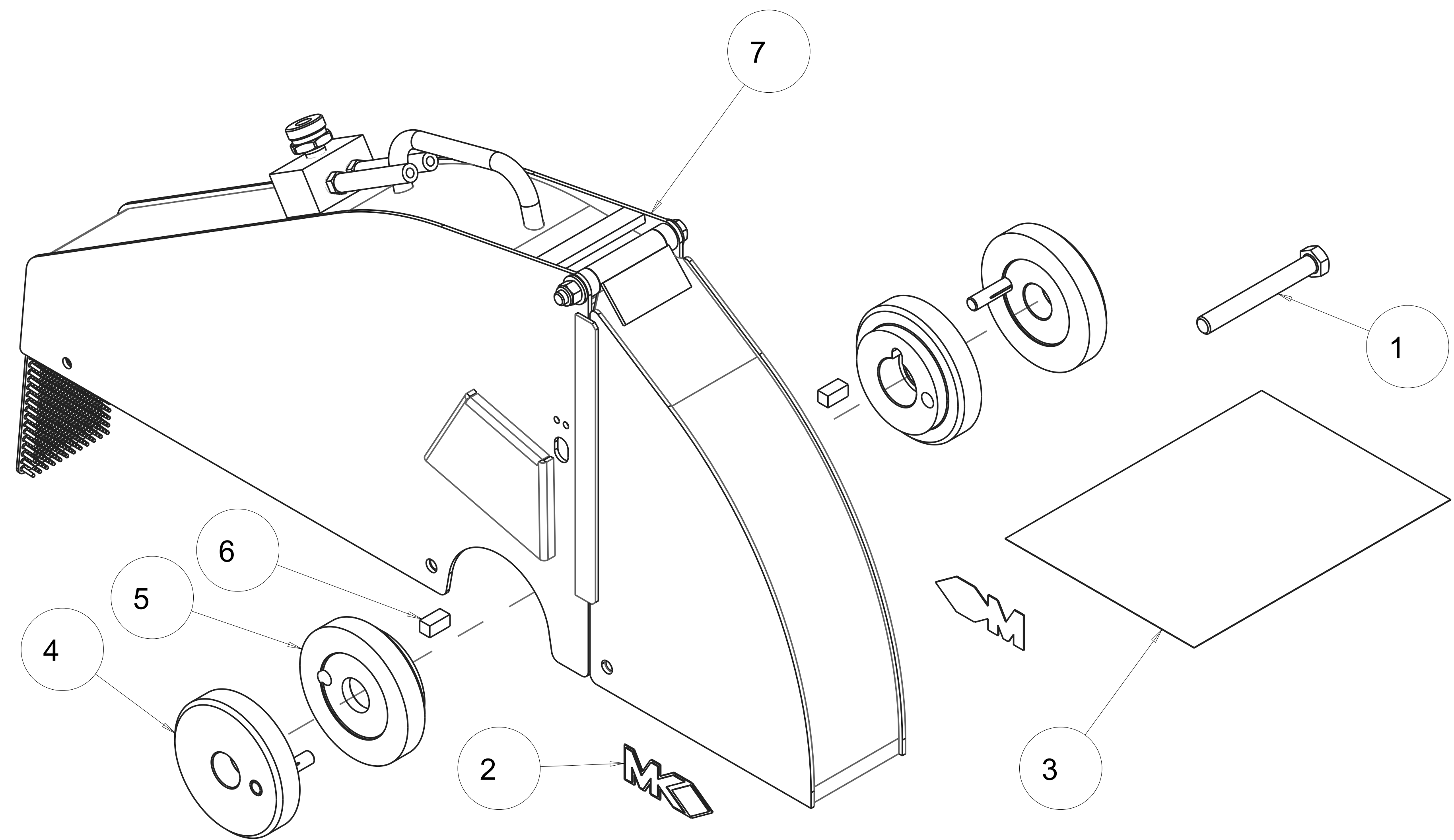
G

H

I

J

REVISIONS				
ZONE	REV.	DESCRIPTION	DATE	APPROVED



QTY. REQ.	PART OR IDENTIFYING NO.	DESCRIPTION	ITEM NO.
1	170173-20	ASSY, BLADE GUARD 20"	7
2	169371	KEY, SQR, 3/8 X 3/4	6
2	168598-4	FLANGE, KEYED, INNER, 4"	5
2	168596-4	ASSY, FLANGE, KEYED, OUTER, 4"	4
1	166009	ASSY, WARNING LABELS, CONCRETE	3
2	157914	LOGO, MK ADHESIVE	2
1	156626	SCREW, HEX HD, TAP, 1/2-13 X 4	1

PARTS LIST			
TOLERANCES UNLESS OTHERWISE SPECIFIED	DATE		
DIMENSIONS ARE IN INCHES	DRAWN		
WHOLE NO. AND FRACTIONS = 1/16 (EXCEPT DRILL HOLES)	CHECK		
X = ± .03	DESIGN		
XX = ± .010	NEXT ASSY.		
XXX = ± .005	-		
ANGLES = ± 12'	<p>PROPRIETARY NOTICE: THIS DRAWING AND INFORMATION IT CONTAINS ARE THE PROPERTY OF MK DIAMOND INC. AND ARE CONSIDERED CONFIDENTIAL AND MAY NOT BE REPRODUCED, COPIED, OR USED IN PART OR IN WHOLE WITHOUT THE WRITTEN CONSENT OF MK DIAMOND PRODUCTS INC.</p>		
DO NOT SCALE DRAWING	APPLICATION	SCALE: 1:000	SHEET: 11 of 15



MK DIAMOND PRODUCTS INC.
1315 STORM PARKWAY
TORRANCE, CA. 90509

MK LARGE CONCRETE SAW KIT, BLADE GUARD, 20", 4/6020KBG

SIZE	PART NO.	DWG. NO.	REV.
D	170610-20G	170610-20G	B

A

B

C

D

E

F

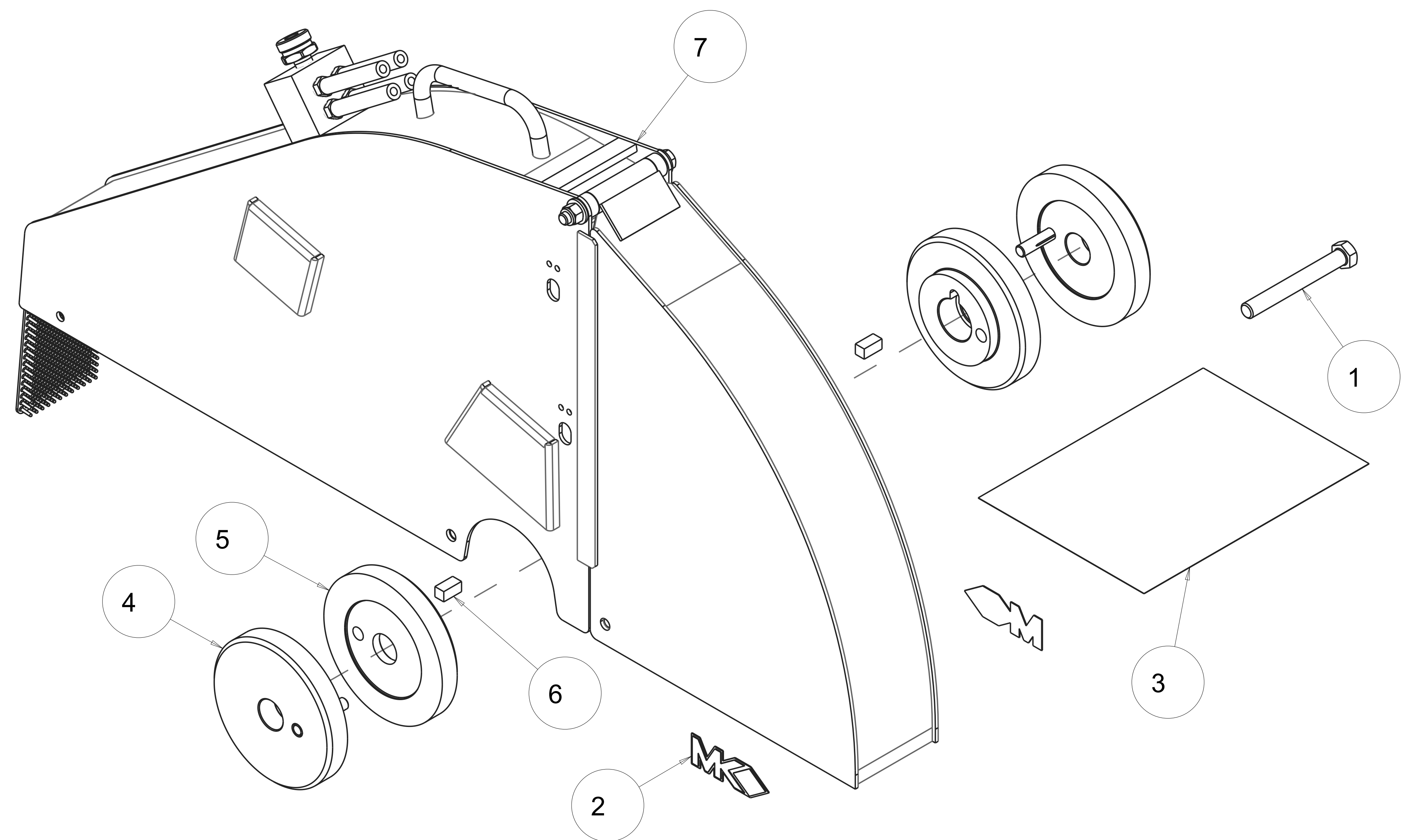
G

H

I

J

REVISIONS				
ZONE	REV.	DESCRIPTION	DATE	APPROVED



QTY. REQ.	PART OR IDENTIFYING NO.	DESCRIPTION	ITEM NO.
1	170173-26	ASSY, BLADE GUARD 26"	7
2	169371	KEY, SQR, 3/8 X 3/4	6
2	168598-5	FLANGE, KEYED, INNER, 5"	5
2	168596-5	ASSY, FLANGE, KEYED, OUTER, 5"	4
1	166009	ASSY, WARNING LABELS, CONCRETE	3
2	157914	LOGO, MK ADHESIVE	2
1	156626	SCREW, HEX HD, TAP, 1/2-13 X 4	1

PARTS LIST			
TOLERANCES UNLESS OTHERWISE SPECIFIED	DATE		
DRAWN			
CHECK			
DESIGN			
WHOLE NO. AND FRACTIONS = 1/16 (EXCEPT DRILL HOLES)	NEXT ASSY.		
X = ± .03	-		
XX = ± .010	-		
XXX = ± .005	-		
ANGLES = ± 1/2°	-		
DO NOT SCALE DRAWING	APPLICATION	SCALE: 1:000	SHEET: 12 of 15

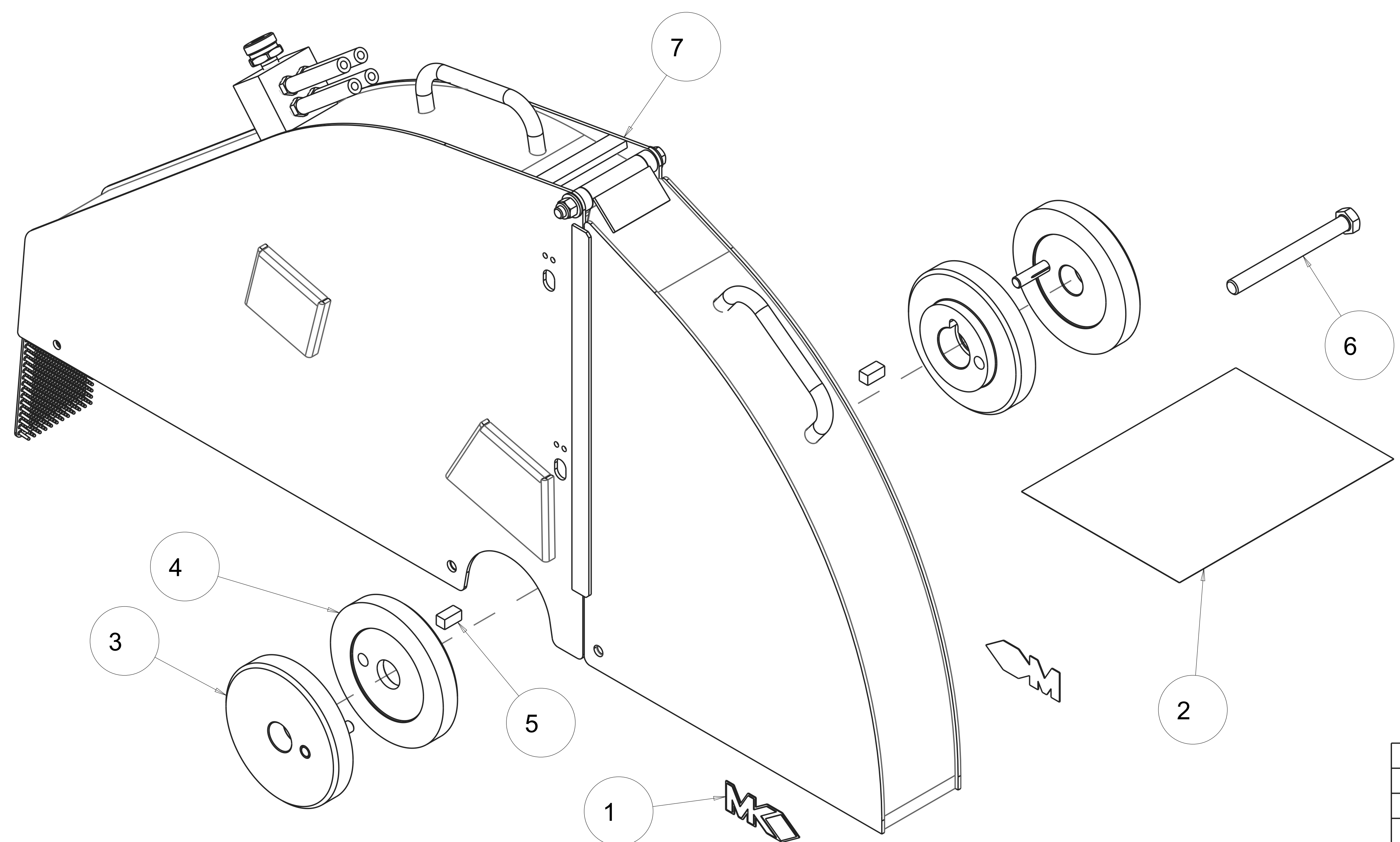


MK DIAMOND PRODUCTS INC.
1315 STORM PARKWAY
TORRANCE, CA. 90509

MK LARGE CONCRETE SAW KIT, BLADE GUARD, 26", 4/6026KBG

SIZE	PART NO.	DWG. NO.	REV.
D	170610-26G	170610-26G	B

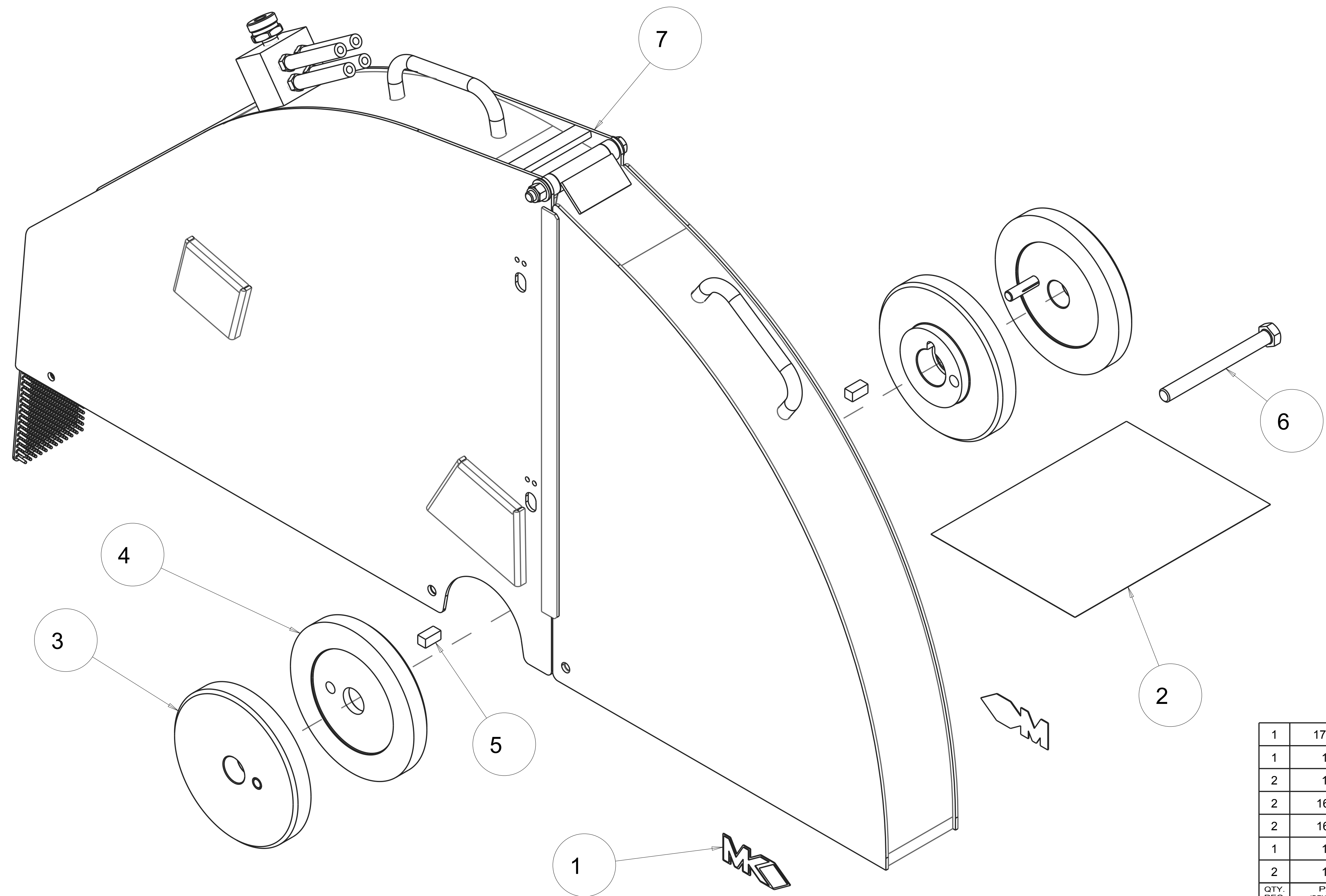
REVISIONS				
ZONE	REV.	DESCRIPTION	DATE	APPROVED



QTY. REQ.	PART OR IDENTIFYING NO.	DESCRIPTION	ITEM NO.
1	170173-30	ASSY, BLADE GUARD 30"	7
1	169570	SCREW, HEX HD, TAP, 1/2-13 X 5	6
2	169371	KEY, SQR, 3/8 X 3/4	5
2	168598-5	FLANGE, KEYED, INNER, 5"	4
2	168596-5	ASSY, FLANGE, KEYED, OUTER, 5"	3
1	166009	ASSY, WARNING LABELS, CONCRETE	2
2	157914	LOGO, MK ADHESIVE	1

PARTS LIST					
TOLERANCES UNLESS OTHERWISE SPECIFIED	DATE	MK DIAMOND PRODUCTS INC. 1315 STORM PARKWAY TORRANCE, CA. 90509			
DRAWN					
CHECK					
DESIGN					
WHOLE NO. AND FRACTIONS = 1/16 (EXCEPT DRILL HOLES)	NEXT ASSY.	MK LARGE CONCRETE SAW KIT, BLADE GUARD, 30", 4/6030KBG			
X = ±.03 XX = ±.010 XXX = ±.005 ANGLES = ±1/2°	PROPRIETARY NOTICE: THIS DRAWING AND INFORMATION IT CONTAINS ARE THE PROPERTY OF MK DIAMOND INC. AND ARE CONSIDERED CONFIDENTIAL AND MAY NOT BE REPRODUCED, COPIED, OR USED IN PART OR IN WHOLE WITHOUT THE WRITTEN CONSENT OF MK DIAMOND PRODUCTS INC.	SIZE D	PART NO. 170610-30G	DWG. NO. 170610-30G	REV. B
DO NOT SCALE DRAWING	APPLICATION	SCALE: 1:000	SHEET: 13 of 15		

REVISIONS				
ZONE	REV.	DESCRIPTION	DATE	APPROVED



QTY. REQ.	PART OR IDENTIFYING NO.	DESCRIPTION	ITEM NO.
1	170173-36	ASSY, BLADE GUARD 36"	7
1	169570	SCREW, HEX HD, TAP, 1/2-13 X 5	6
2	169371	KEY, SQR, 3/8 X 3/4	5
2	168598-6	FLANGE, KEYED, INNER, 6"	4
2	168596-6	ASSY, FLANGE, KEYED, OUTER, 6"	3
1	166009	ASSY, WARNING LABELS, CONCRETE	2
2	157914	LOGO, MK ADHESIVE	1

PARTS LIST			
TOLERANCES UNLESS OTHERWISE SPECIFIED	DATE	MK DIAMOND PRODUCTS INC. 1315 STORM PARKWAY TORRANCE, CA. 90509	
DRAWN		MK LARGE CONCRETE SAW KIT, BLADE GUARD, 36", 4/6036KBG	
CHECK			
DESIGN			
WHOLE NO. AND FRACTIONS = 1/16 (EXCEPT DRILL HOLES)		<small>PROPRIETARY NOTICE: THIS DRAWING AND INFORMATION IT CONTAINS ARE THE PROPERTY OF MK DIAMOND INC. AND ARE CONSIDERED CONFIDENTIAL AND MAY NOT BE REPRODUCED, COPIED, OR USED IN PART OR IN WHOLE WITHOUT THE WRITTEN CONSENT OF MK DIAMOND PRODUCTS INC.</small>	SIZE D PART NO. 170610-36G DWG. NO. 170610-36G REV. B
X = ± .03 XX = ± .010 XXX = ± .005 ANGLES = ± 1/2°		SCALE: 1:000	SHEET: 14 of 15
DO NOT SCALE DRAWING	APPLICATION		

A

B

C

D

E

F

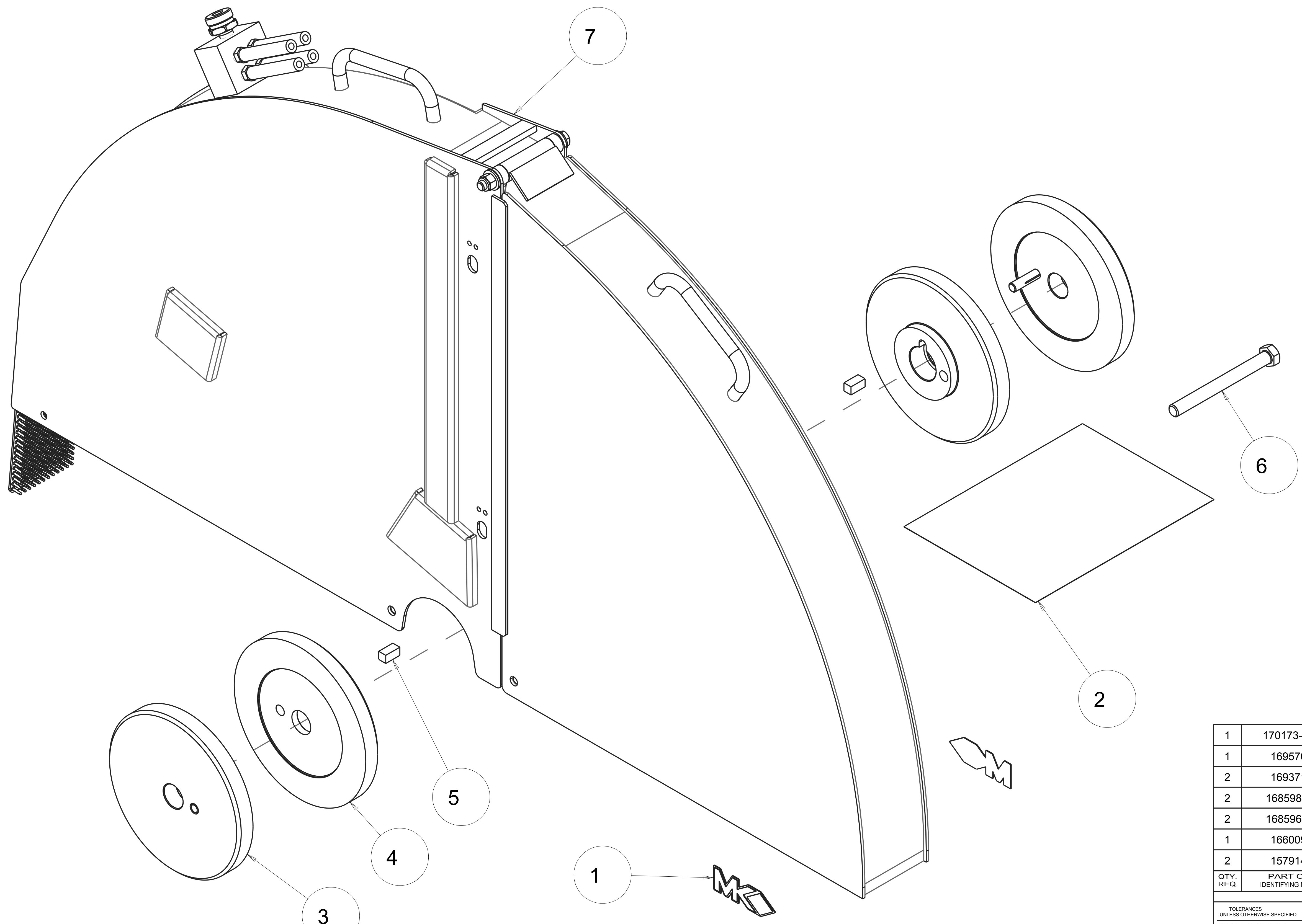
G

H

I

J

REVISIONS				
ZONE	REV.	DESCRIPTION	DATE	APPROVED



QTY. REQ.	PART OR IDENTIFYING NO.	DESCRIPTION	ITEM NO.
1	170173-42	ASSY, BLADE GUARD 42"	7
1	169570	SCREW, HEX HD, TAP, 1/2-13 X 5	6
2	169371	KEY, SQR, 3/8 X 3/4	5
2	168598-7	FLANGE, KEYED, INNER, 7"	4
2	168596-7	ASSY, FLANGE, KEYED, OUTER, 7"	3
1	166009	ASSY, WARNING LABELS, CONCRETE	2
2	157914	LOGO, MK ADHESIVE	1

TOLERANCES UNLESS OTHERWISE SPECIFIED		DATE	
DIMENSIONS ARE IN INCHES		DRAWN	
WHOLE NO. AND FRACTIONS = 1/16 (EXCEPT DRILL HOLES)		CHECK	
X = ±.03		DESIGN	
XX = ±.010		NEXT ASSY.	
XXX = ±.005			
ANGLES = ±1/2°			
DO NOT SCALE DRAWING		APPLICATION	



MK DIAMOND PRODUCTS INC.
1315 STORM PARKWAY
TORRANCE, CA. 90509

MK LARGE CONCRETE SAW KIT, BLADE GUARD, 42", 6042KBG

SIZE	PART NO.	DWG. NO.	REV.
D	170610-42G	170610-42G	B

SCALE: 0.500 SHEET: 15 of 15