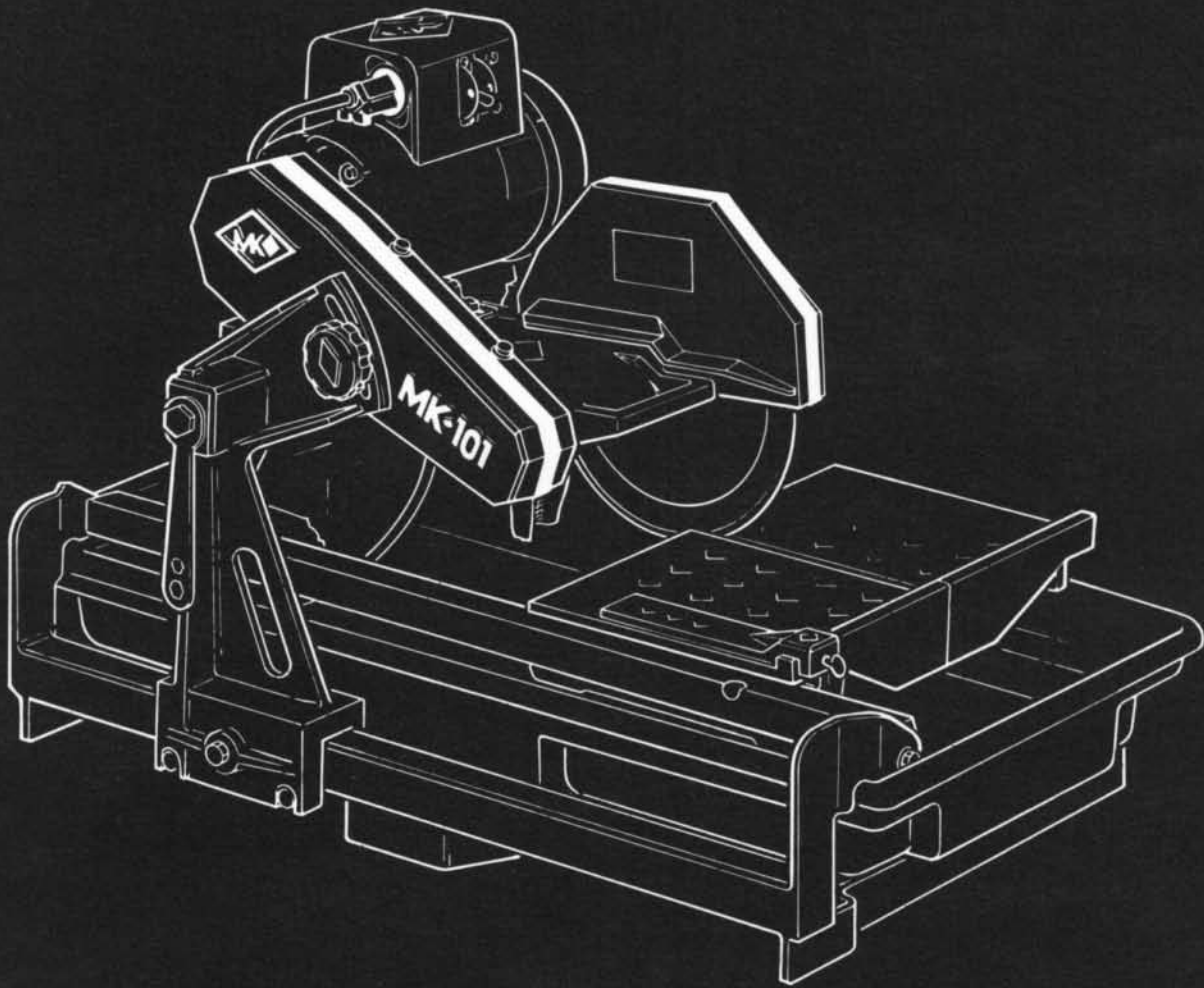
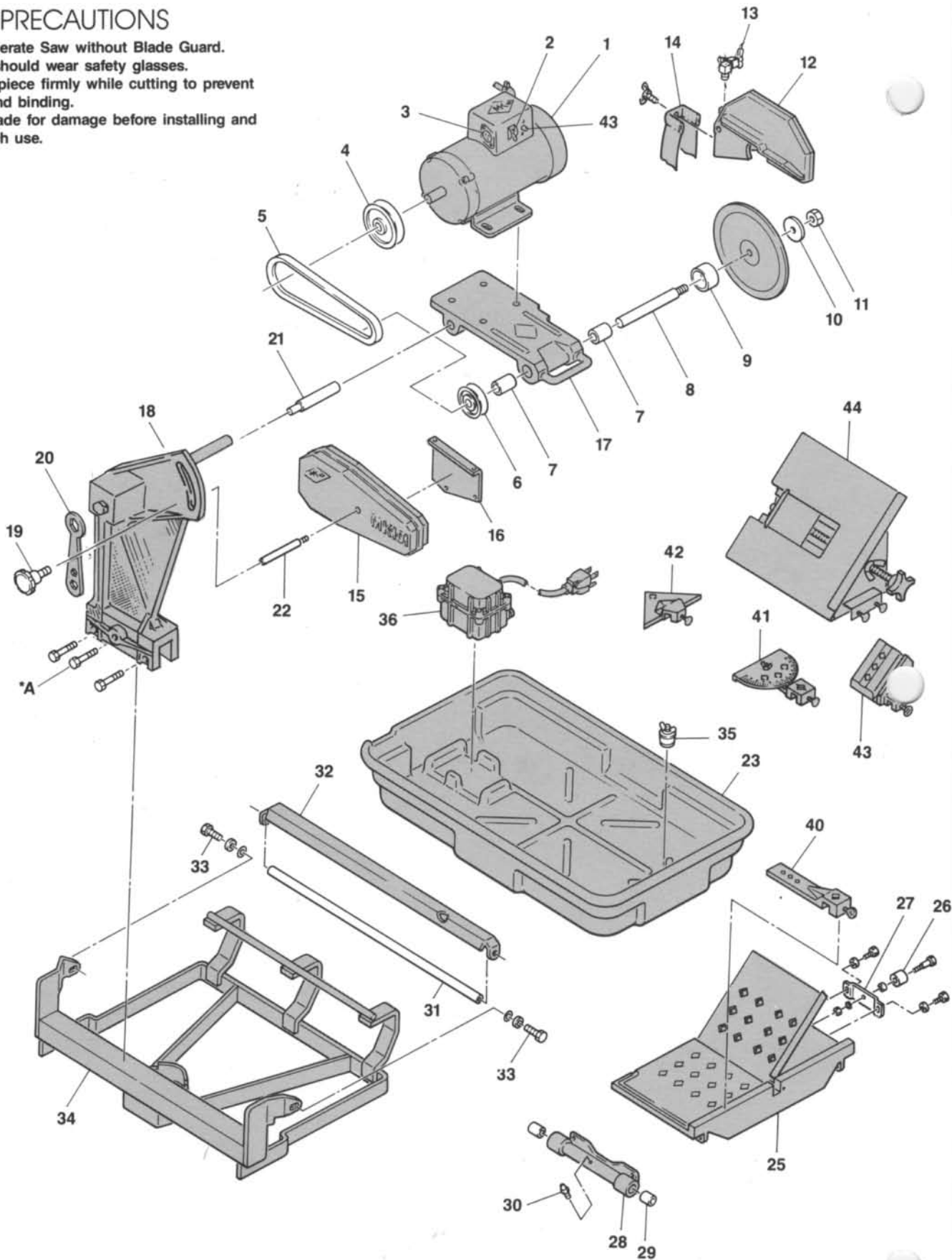


Model MK-101/115 Tile Saw Operating Instructions and Parts List



SAFETY PRECAUTIONS

1. NEVER operate Saw without Blade Guard.
2. Operator should wear safety glasses.
3. Hold workpiece firmly while cutting to prevent twisting and binding.
4. Inspect blade for damage before installing and before each use.



WARRANTY

MK warrants all products manufactured by it against defects in workmanship or materials for a period of one (1) year from date of shipment to customer.

The responsibility of MK Diamond Products under this warranty is limited to replacement or repair of defective parts at MK factory in Hawthorne, California. In no event shall MK Diamond Products be

liable for consequential damages arising out of the failure of any product to operate properly.

Integral parts such as motors, are excluded from this warranty and are subject to the manufacturer's warranty.

This warranty is in lieu of all other warranties expressed or implied.

PARTS LIST

Item No.	Description	Part No.	Price
1	Motor 1 H.P. 115-Volt AC 60 Hz 1	13919-6	\$263.00
1	Motor 1 H.P. 230-Volt AC 50 Hz 1	13624-2	288.00
1	Motor 1½ H.P. 115-Volt AC 60 Hz 1	13304-1	415.00
2	Toggle Switch 1 H.P. Motor	13579-8	11.50
2	Waterproof on/off Switch Assembly, 1½ H.P. Motor	13977-4	85.00
3	Water Pump Receptacle	13586-3	8.50
4	Motor Pulley	13466-8	6.50
5	V-Belt	13465-0	8.00
6	Blade Shaft Pulley	13467-6	4.50
7	Blade Shaft Bearings (two)	13771-1	6.50
8	Blade Shaft	13772-9	18.00
9	Inside Blade Shaft Flange	13773-7	15.50
10	Outside Blade Shaft Flange	13583-0	9.50
11	Blade Shaft Nut	13584-8	1.00
12	Blade Guard Assembly	13462-7	64.00
13	Water Control Valve	13774-5	8.00
14	Water Splash Shield	151393	4.00
15	Belt Guard	13775-2	47.50
16	Belt Guard Mounting Bracket	13776-0	5.00
17	Cutting Head Casting	13461-9	125.00
18	Cutting Head Adjustment Arm	13777-8	175.00
19	Adjustment Knob	13778-6	4.50
20	Wrench	13468-4	3.00
21	Pivot Extension 18" Cutting Kit-Head	13779-4	17.50
22	Pivot Extension 18" Cutting Kit-Belt Guard	13780-2	17.50
23	Plastic Water Pan	15063-4	69.00
24	Plastic Pan/Rail Assembly (Not Shown - Previous Style Only)	13736-4	89.00
25	Conveyor Cart Assembly	13454-4	152.00
26	Conveyor Cart Wheel	13783-6	3.00
27	Wheel and Bracket Assembly	151090	35.00
28	Guide Bar Casting	13585-5	31.00
29	Bronze Bearings (two)	13479-1	2.00
30	Grease Fitting	13784-4	1.00
31	Chrome Plated Guide Bar	13475-9	39.00
32	Splash Cover for Guide Bar	13785-1	9.00
33	Support Bolts for Guide Bar (two required)	13786-9	1.00
34	Frame Assembly	13787-7	98.00
35	Drain Plug	13302-5	2.00
36	Water Pump (115-Volt AC 60 Hz 1)	15127-1	46.00
36	Water Pump (230-Volt AC 50 Hz 1)	15101-4	73.00
37	Water Pump Hose Adaptor (Not Shown)	12839-7	1.50
38	Water Hose (4 ft) Vinyl (Not Shown)	13295-1	1.00/ft.
39	Thermal-Overload Switch	13634-1	25.00

ACCESSORIES

40	Adjustble Rip Guide	13455-1	\$14.00
41	90° Protractor	13456-9	20.00
42	Dual 45° Flat Angle Guide	13457-7	13.00
43	45° Bullnose Mitre Adaptor	13458-5	21.50
44	45° Mitre Jig for 12" and 14" Tile	13632-5	108.00
45	Diagonal Cutting Kit 18"x18" Tile (Not Shown)	13735-6	98.50
46	Folding Stand (Not Shown)	13393-4	82.00
47	24" Tile Cutting Kit (Not Shown)	15074-1	125.00
48	Cord Adaptor for MK115 (Not Shown)	15096-0	8.00

Congratulations! Your selection of the MK-101 Tile Saw is a sound business decision. MK equipment is the result of quality engineering and tested designs.

OPERATING INSTRUCTIONS

1. Before using your new MK-101 Tile Saw, examine it carefully for any damage in transit. Install a blade and check to see that it tracks in the center of the slot in the conveyor cart. Move the cart front to back to be sure it moves freely. Note: conveyor cart alignment has been set at the factory and should need no further adjustment. Refer to number 11 if adjustment is needed.
2. Select a blade which is the correct specification for the material being cut. For best results always use MK Diamond Products blades which have been designed to give fast, smooth, chip-free cutting and long life.
3. After installing the blade, loosen the fluted knob (item 19) and adjust the cutting head so that the blade rim is at least $\frac{1}{4}$ " below the surface of the conveyor cart. Tighten the knob to hold the head in place. Note: Setting the blade too shallow will cause it to grab and damage the tile and possibly the machine.
4. Before connecting the saw to the power supply, check that voltage and phase shown on the motor nameplate are the same as the power supply. Your supply circuit should be 115 volts, 60Hz., 20 amps; protected by 20 amp circuit breaker. (If a generator is necessary, use 5000KW minimum.) Power supply must be the grounding type and you must use 3 conductor extension cords with 3 prong grounding plugs and receptacles. When using extension cords, use the following rule for size:

WIRE GAUGE:	#14	#12	#10
115VOLTS:	25 feet	50 feet	75 feet

If you use smaller wire than indicated above, you may have a reduction in voltage at the motor which will cause overheating. We recommend you use only UL listed cords. Connect saw as close to power supply as possible.

All MK saw motors have thermal overload protectors and are equipped with a reset button on the terminal box on the motor. If the motor overheats, the thermal protection will shut off the motor. Turn the motor switch to "OFF" and wait 10 minutes before resetting by pressing reset button. If saw continues to shut off, check for low voltage, voltage drop, too long or small extension cords, etc.

Periodically clean the dirt from the motor housing and from plastic motor fan by removing fan housing.
5. The MK-101 features an exclusive conveyor cart Guide Bar which allows the conveyor cart to track with maximum accuracy, assuring a precision cut at all times. A grease fitting is located on the guide bar casting for periodic lubrication. Use a lightweight grease applied with a grease gun.
6. The adjustable cutting head mount allows the operator to adjust the position of the cutting head laterally on the frame for convenience, comfort, and to accommodate large tiles. Lateral adjustment is accomplished by loosening bolt (*A on the illustration) and moving the assembly forward or backward on the frame to the desired position. After adjusting the cutting head, be sure to tighten bolt (*A) to secure the assembly.

Caution: Do not adjust the two remaining bolts as they are pre-set at the factory. Changing their adjustment could affect the alignment of the cutting head.
7. The Plastic Water Pan (item 23) is made of durable high impact ABS plastic for a dent and rust free finish and easy cleanup. The pan may be removed from the saw by sliding it out through the front of the frame. Cleaning after each use is recommended.

8. V-BELT ADJUSTMENT

The premium V-Belt on the MK-101 requires very little adjustment, but should be tightened after the first few days of running. Keep Belt tight for correct power transmission and longer belt life.

9. WATER SYSTEM

Water supply should be adequate with water flowing to both sides of the Blade.

Keep recirculating Water Pump clean; do not allow sediment to cake in Pump and clog it. Water level in plastic pan should always be above Pump intake.

Water Pumps have thermal overload protection and sealed bearings, which require no lubrication. If Pump does not pump, be certain the Pump pig-tail is properly connected to Pump Receptacle on Saw Motor. Cold weather and low voltage may cause Pump not to function perfectly until it is broken in. In any case, a slight turn of the Impeller should be sufficient to keep the Pump working smoothly.

10. BLADE SHAFT ASSEMBLY

Blade Shaft Bearings are sealed and permanently lubricated. No lubrication is required. Use the Tile Saw wrench to tighten Blade Shaft Nut securely. When tightening Blade Shaft Nut against outside Blade Shaft Collar, be sure to tighten enough to hold Blade firmly without slipping on Shaft; but do **not** overtighten. Before mounting Blade on Saw, the Blade should be inspected for damage caused by previous use or damage in shipment.

11. CONVEYOR CART ADJUSTMENT

If it is necessary to adjust the alignment between conveyor cart and the blade shaft, proceed as follows: Loosen guide bar retaining bolts (item 33) and move guide bar (item 31) as necessary to center blade into the slot in the conveyor cart. Check for squareness between the blade and ruled back stop of conveyor cart, (Use a quality square for this). Adjust guide bar back and forth in the slots until squareness is achieved and then tighten support bolts (Do Not Over Tighten). Be sure guide bar does not move during tightening. After support bolts are tight, check again for centering of the blade and squareness of blade to conveyor cart. Squareness of the blade to the top of the conveyor cart may be adjusted by loosening retaining bolts of adjustment bracket (item 27) and raising or lowering the bracket to achieve squareness between the conveyor cart and the blade. Retighten the bolts after adjustment.

12. Optional CUTTING KIT

The Optional Cutting Kit (Part No. 13735-6) allows the saw to cut 18" x 18" tiles diagonally and rip 24" x 24" tiles. To install this Cutting Kit, remove Adjustment Control Knob (Item 20) then remove $\frac{3}{8}$ " hex head bolt on end of pivot bar (Item 19). Thread large diameter Pivot Bar Extension (Item 22) into threaded opening, slide cutting head over on to extension. Next, thread small diameter extension (Item 23) into threaded opening in belt guard. Lift cutting head until threaded opening in the extension lines up with the slot in Control Arm Assembly (Item 19). Install Adjustment Control Knob (Item 20) through adjustment slot and thread into extension. Install Triangular Fixture on Conveyor Cart (Item 27) and tighten thumb screw to hold fixture firmly to cart. Be sure blade tracks down center of slot in fixture. Place tile in fixture and adjust cutting head for blade size and depth of cut.

DISTRIBUTED BY



MK DIAMOND PRODUCTS, INC.
12600 Chadron Avenue, Hawthorne, CA 90251-5008
Telephone 213-679-1487. Telex 664-377. CA WATS 1-800-262-1575.
All Other States: 1-800-421-5830