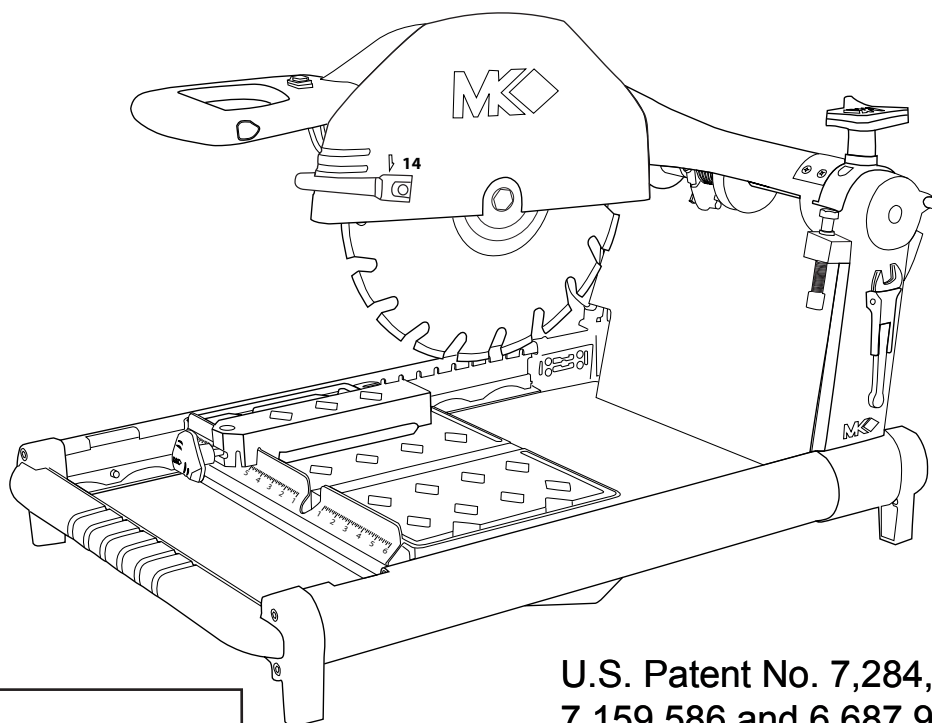




# BX-4

## PARTS LIST BRICK SAW WITH OR WITHOUT MISTING DUST CONTROL



U.S. Patent No. 7,284,547,  
7,159,586 and 6,687,972

Revision 115	03.2019

Enter the Serial Number of your new saw in the space below.  
The Serial Number is located on the left side of the blade guard.

**SERIAL NUMBER:**

### CAUTION:

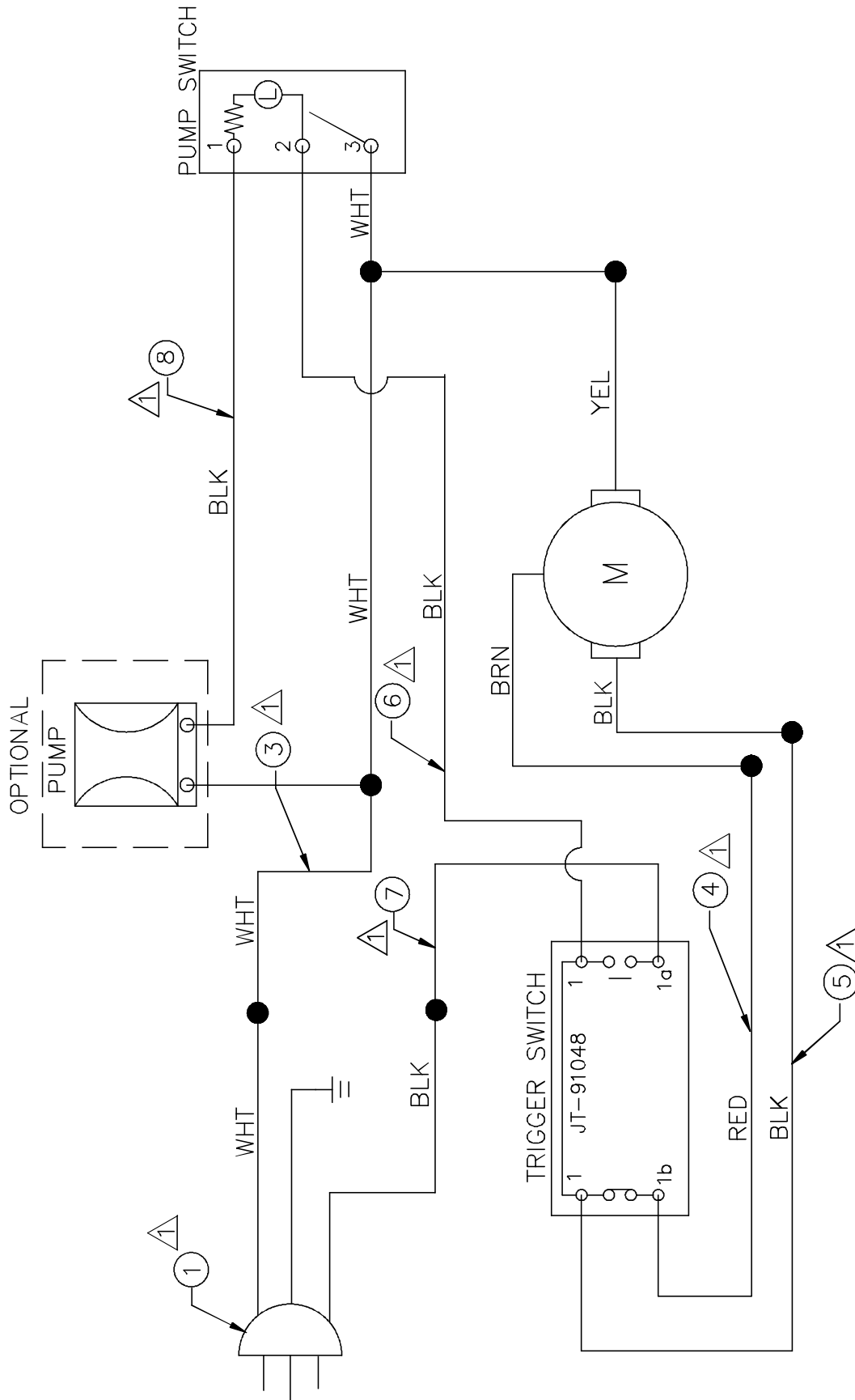
Read all safety and operating instructions  
before using this equipment



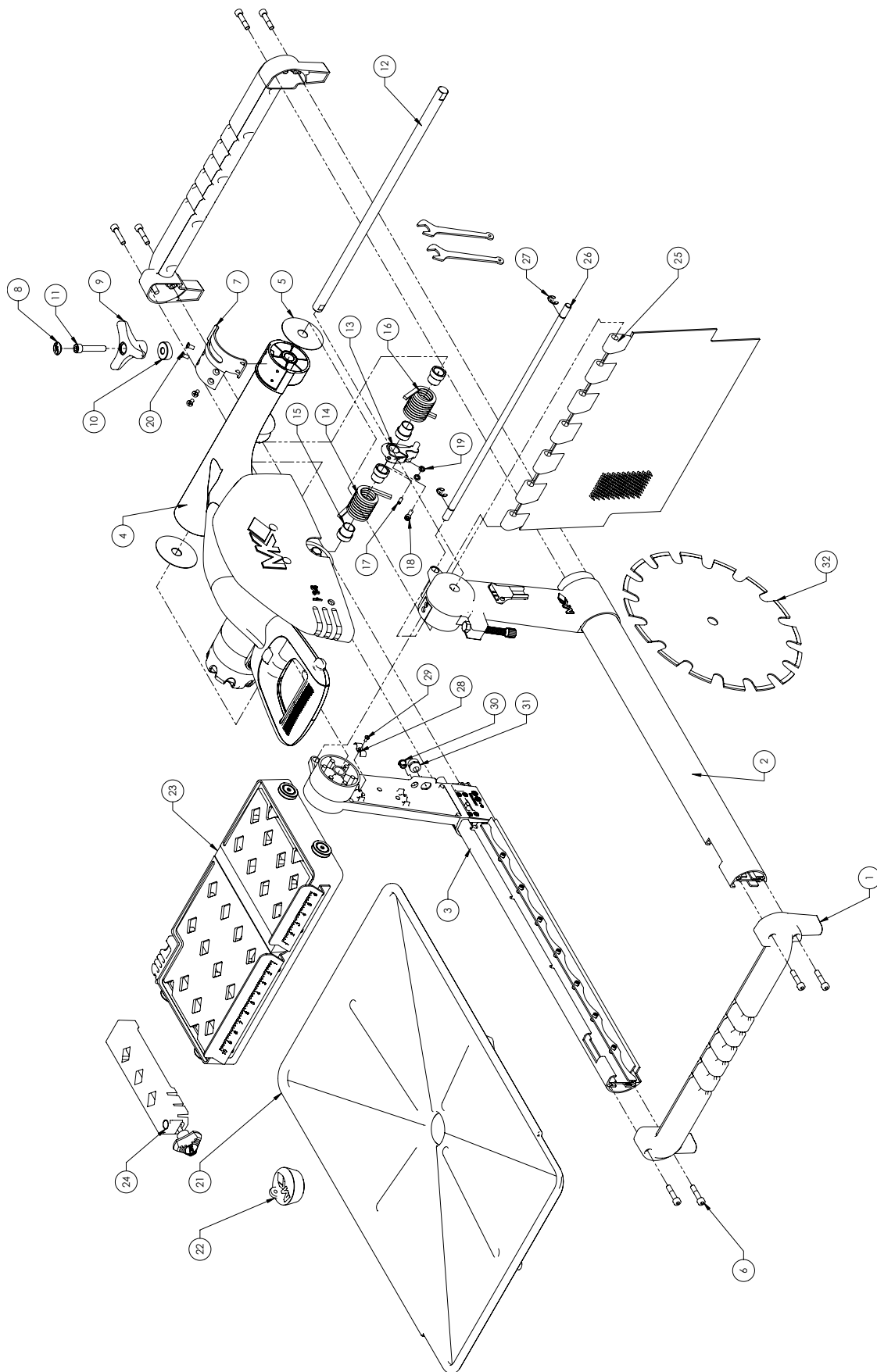
### NOTE:

**WARRANTY:** For your (1) one year warranty to be effective, complete the online Product Registration as soon as possible. Visit [www.mkdiamond.com/registration/](http://www.mkdiamond.com/registration/)

# BRICK SAW ELECTRICAL WIRING DIAGRAM



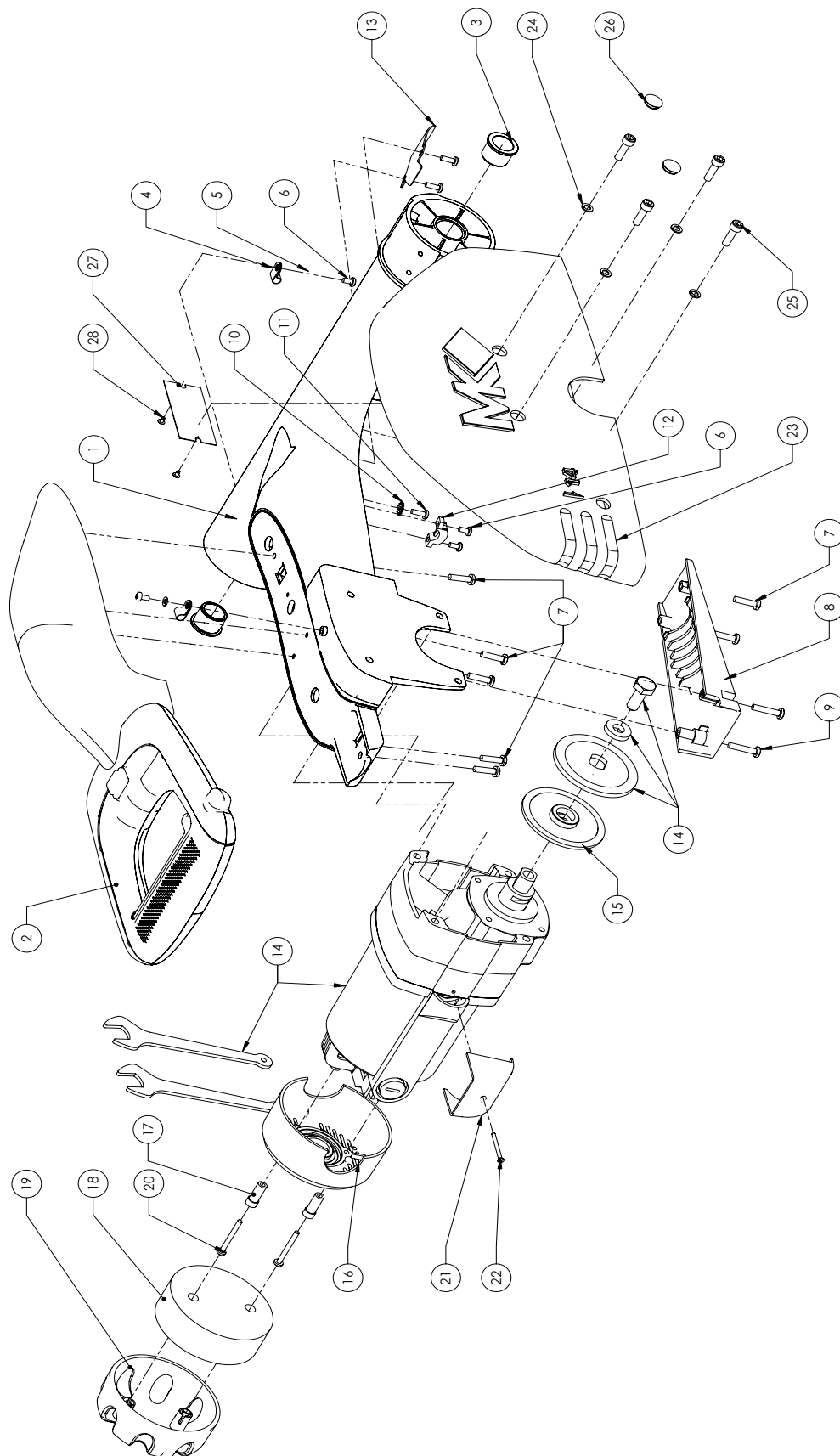
## ASSEMBLY FINAL (WITHOUT MISTING COMPONENTS)



## PART LIST, ASSEMBLY, FINAL

ITEM NO.	PART NUMBER	DESCRIPTION	QTY.
1	166231	ASSY, END CAP	2
2	166234	ASSY, RIGHT FRAME	1
3	166235	ASSY, LEFT FRAME	1
4	166238	ASSY, CUTTING HEAD	1
5	164675	RING, WEAR	2
6	164721	SCREW, SOC HD CAP, M8x30mm	8
7	164712	INDICATOR, DEPTH	1
8	166311	COVER, KNOB	1
9	166312	KNOB, TRI	1
10	164727	BUSHING, LOCK	1
11	164773	SCREW, SOC HD CAP TAPPING, M10x56mm	1
12	164658	SHAFT, PIVOT	1
13	166313	RETAINER, SPRING	1
14	164660	SPRING, TORSION, LH	1
15	164661	SPACER, SPRING	4
16	164762	SPRING, TORSION, RH	1
17	164787	SCREW, SOC SET, M5x16mm	1
18	164775	SCREW, SOC HD CAP, M6x25mm	1
19	164803	WASHER, FLAT, M7	2
20	164789	SCREW, FLAT HD PHIL, M6x13mm	4
21	164634	PAN, WATER	1
22	159858	PLUG, DRAIN	1
23	166233	ASSY, TABLE	1
24	166230	ASSY, RIP GUIDE	1
25	164769	CURTAIN, SPLASH	1
26	164665	ROD CURTAIN	1
27	164798	RING, E-RETAINING, 10mm	2
28	164724	CLAMP, TWIN	1
29	164776	SCREW, PAN HD PHIL, M4x8mm	1
30	164726	BUSHING, SNAP	1
31	164725	BUSHING, STRAIN RELIEF	1
32	157957-BK	BLADE	1

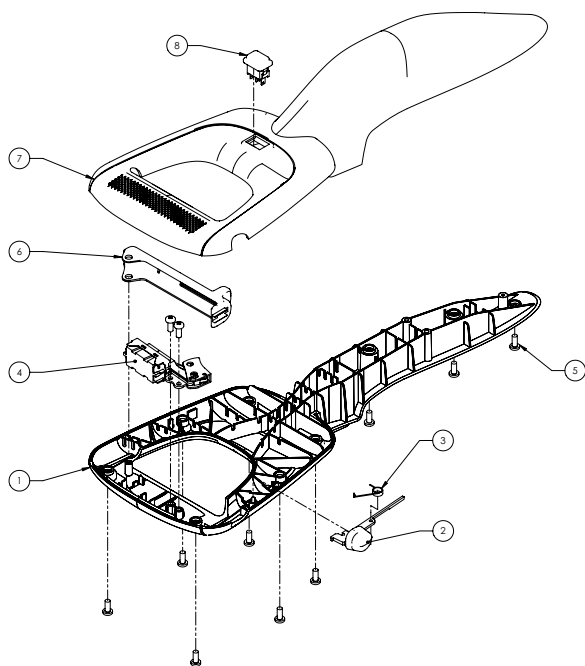
# ASSEMBLY, CUTTING HEAD



## PART LIST, ASSEMBLY, CUTTING HEAD (P# 166238)

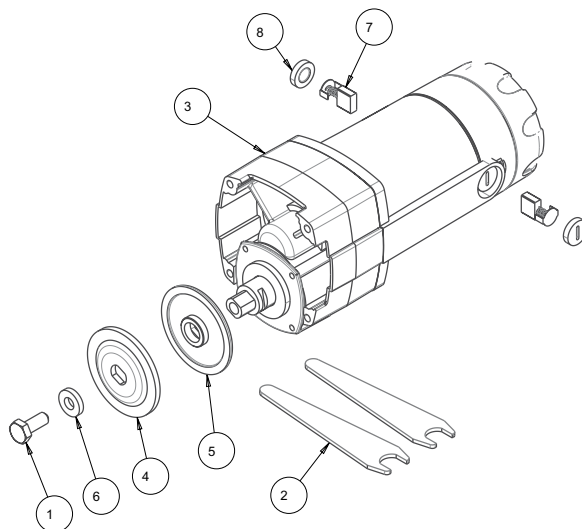
ITEM NO.	PART NUMBER	DESCRIPTION	QTY.
1	164673	ARM	1
2	166237	ASSY, HANDLE	1
3	164674	BUSHING, ARM	2
4	164698	CLAMP, TUBE	2
5	164795	WASHER, FLAT, M4	2
6	164776	SCREW, PAN HD PHIL, M4x8mm	4
7	164792	SCREW, PAN HD PHIL, M5x20mm	7
8	164680	COVER, PUMP	1
9	164781	SCREW, PAN HD PHIL, M5x25mm	2
10	164797	WASHER, TOOTH LOCK EXT, M4	1
11	164778	SCREW, PAN HD PHIL, M4x12mm	3
12	164759	CLAMP, CABLE	1
13	166314	SHIELD, POWER CORD	1
14	166232	MOTOR & ACCESSORIES	1
15	158106	FLANGE, INNER	1
16	157877	CAP, MOTOR	1
17	157879	SPACER, FILTER	2
18	157729	FILTER	1
19	157878	CAP, FILTER	1
20	158157	SCREW, PAN HD COMB SELF TAPPING, #8x1-1/2"	2
21	157880	COVER, WIRE	1
22	158160	SCREW, FLAT HD PHIL, #6x1-1/2"	1
23	164681	GUARD, BLADE	1
24	166249	WASHER, LOCK, M6	4
25	164775	SCREW, SOC HD CAP, M6x25mm	4
26	164685	PLUG, SCREW HOLE	2
27	157500	TAG, SERIAL	1
28	157849	PIN, DRIVE, #7x5/16	2

## PARTS & LIST <CON'T>



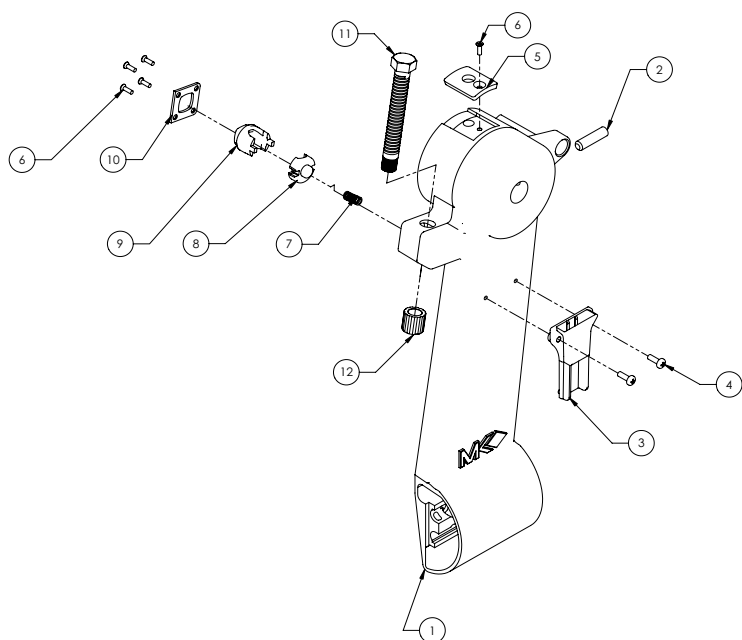
ASSY, HANDLE (P#166237)

ITEM NO.	PART NUMBER	DESCRIPTION	QTY.
1	164667	HANDLE, LOWER	1
2	164671	BUTTON, LOCK	1
3	164734	SPRING, RETURN	1
4	164832	SWITCH, TRIGGER	1
5	164791	SCREW, PAN HD, SELF TP, #10 x 1/2	11
6	164670	LEVER, SWITCH	1
7	164668	HANDLE, UPPER	1
8	166315	SWITCH, PUMP	1



MOTOR & ACCESSORIES (P#166232)

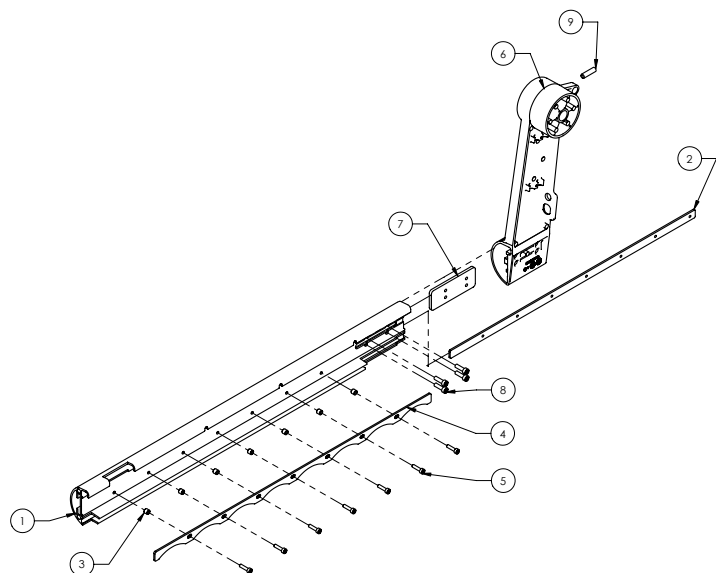
ITEM NO.	PART NUMBER	DESCRIPTION	QTY.
1	152272	SCREW, M10 X 1.5 HEX HD CAP	1
2	153450	WRENCH, TILES AW, 11/16 OPEN END	2
3	157801-C	MTR, 115V, 15A, AC	1
4	158105	FLANGE, OUTER	1
5	158106	FLANGE, Ø 3.0 INNER	1
6	166134	WASHER, HARDENED, 10.5X23X4.5MM	1
7	166228	BRUSH, MTR	2
8	166229	BRUSH CAP, MOTOR	2



ASSY, VERTICAL SUPPORT, RIGHT (P#166236)

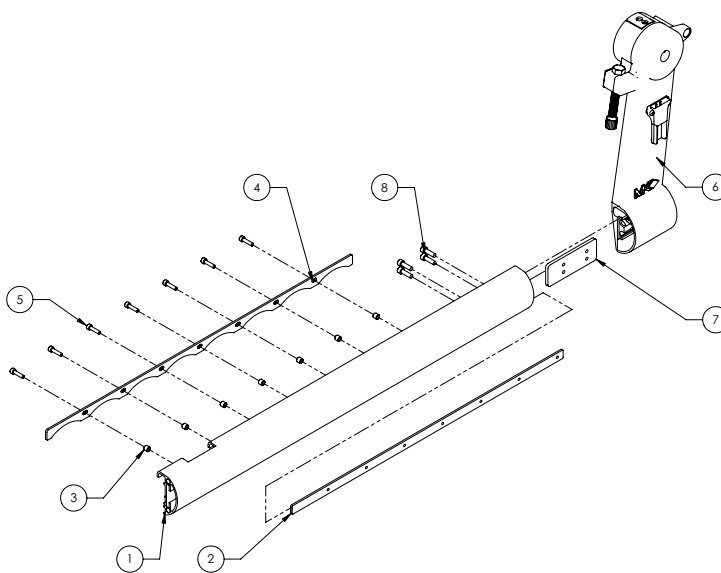
ITEM NO.	PART NUMBER	DESCRIPTION	QTY.
1	166227	SUPPORT, RIGHT VERTICAL	1
2	164788	SCREW, SOC SET, M8x30mm	1
3	164669	HOLDER, WRENCH	1
4	164778	SCREW, PAN HD PHIL, M4x12mm	2
5	164723	PLATE, LOCKING, CUTTING HEAD	1
6	164784	SCREW, FLAT HD PHIL, M4x10mm	5
7	164717	SPRING, RELEASE	1
8	166316	SEAT SPRING	1
9	164718	BUTTON, RELEASE	1
10	164716	COVER, RELEASE BUTTON	1
11	164713	STOP, DEPTH	1
12	164714	CAP, DEPTH STOP	1

## ASSEMBLY THE WHOLE FRAME & PART LIST



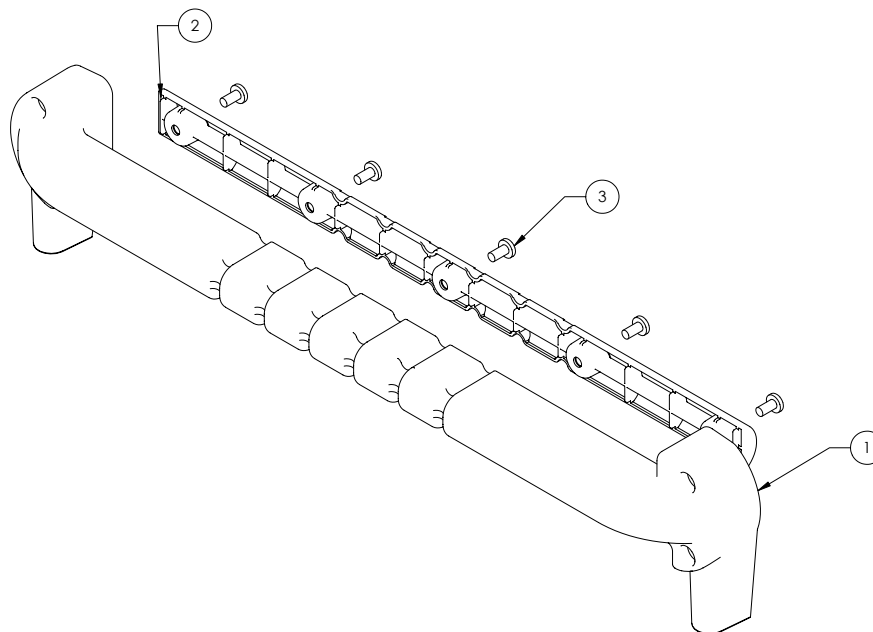
ASSY, LEFT FRAME (P#166235)

ITEM NO.	PART NUMBER	DESCRIPTION	QTY.
1	164649	FRAME, LEFT	1
2	164722	PLATE, RAIL SUPPORT	1
3	164651	STANDOFF, RAIL	7
4	164650	RAIL, STEEL	1
5	164774	SCREW, SOC HD CAP, M5x20mm	7
6	164655	SUPPORT, LEFT VERTICAL	1
7	164657	PLATE, RAIL SUPPORT	1
8	164775	SCREW, SOC HD CAP, M6x25mm	4
9	164788	SCREW, SOC SET, M8x30mm	1



ASSY, RIGHT FRAME (P#166234)

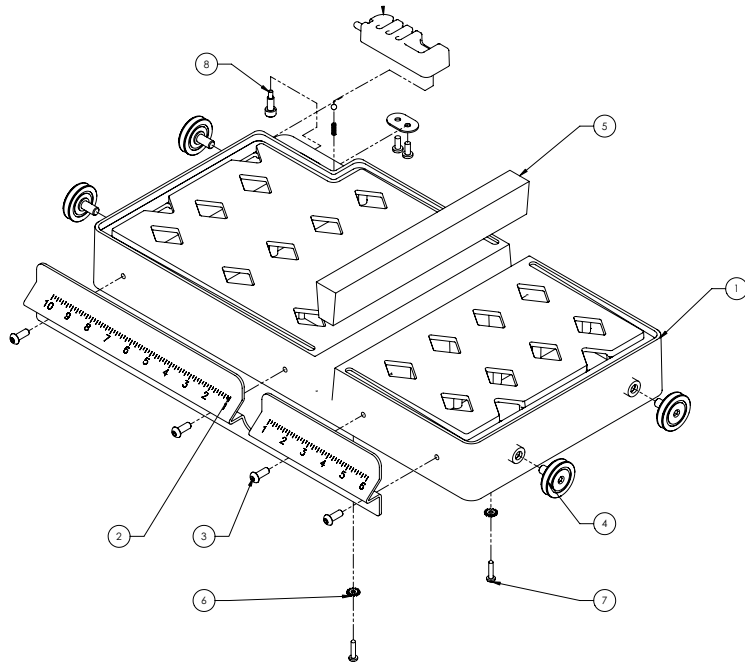
ITEM NO.	PART NUMBER	DESCRIPTION	QTY.
1	164648	FRAME, RIGHT	1
2	164722	PLATE, RAIL SUPPORT	1
3	164651	STANDOFF, RAIL	7
4	164650	RAIL, STEEL	1
5	164774	SCREW, SOC HD CAP, M5x20mm	7
6	166236	ASSY, SUPPORT, RIGHT VERTICAL	1
7	164657	PLATE, RAIL SUPPORT	1
8	164775	SCREW, SOC HD CAP, M6x25mm	4



ASSY, END CAP (P#166231)

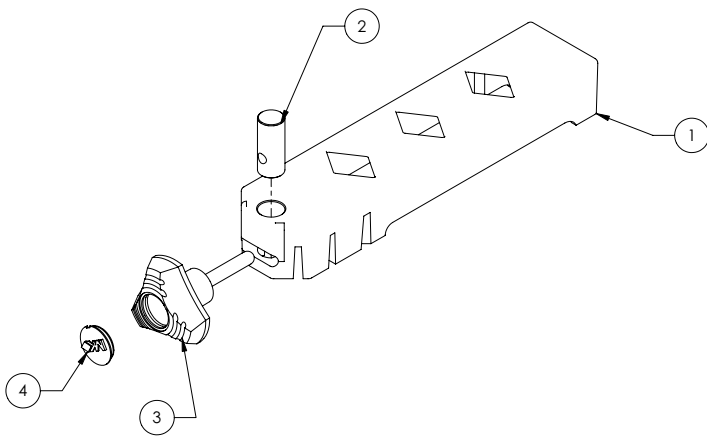
ITEM NO.	PART NUMBER	DESCRIPTION	QTY.
1	164652	END CAP	1
2	164653	COVER, END CAP	1
3	164783	SCREW, PAN HD PHIL, M6x12mm	5

## ASSEMBLY TABLE, TABLE LOCK & PART LIST



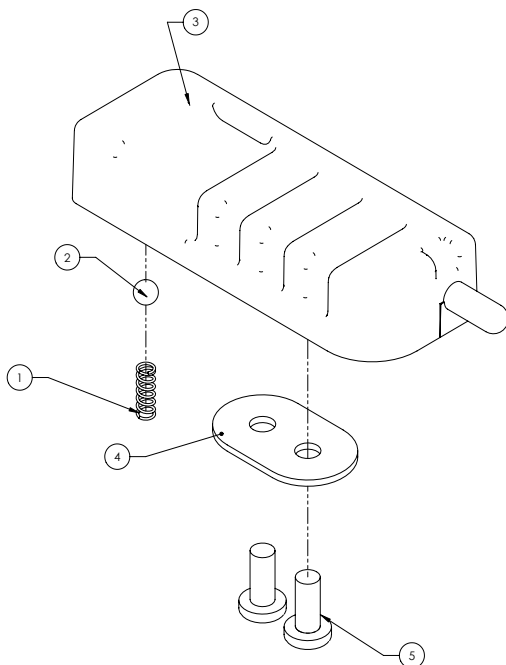
ASSY, TABLE (P#166233)

ITEM NO.	PART NUMBER	DESCRIPTION	QTY.
1	164636	TABLE	1
2	164637	FENCE, TABE	1
3	164772	SCREW, PAN HD PHIL, M6x16mm	4
4	133090	WHEEL, ROLLER	4
5	164641	STRIP, WOOD	1
6	164797	WASHER, TOOTH LOCK EXT, M4	2
7	164796	SCREW, WOOD, M4x20mm	2
8	164760	PIN, GUIDE	1
9	166239	KIT, TABLE LOCK	1



ASSY, RIP GUIDE (P#166230)

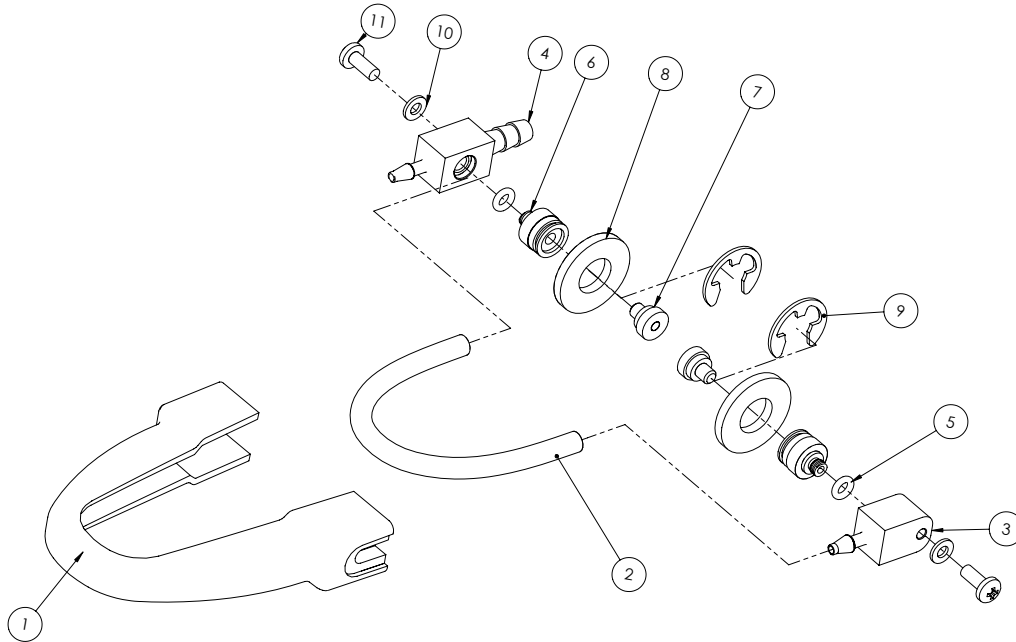
ITEM NO.	PART NUMBER	DESCRIPTION	QTY.
1	164645	GUIDE, RIP	1
2	164646	PIN, SWIVEL	1
3	164659	KNOB	1
4	164728	COVER, KNOB	1



KIT, TABLE LOCK (P#166239)

ITEM NO.	PART NUMBER	DESCRIPTION	QTY.
1	164644	SPRING, TABLE LOCK	1
2	164643	BALL, STEEL, 5mm	1
3	164642	LOCK, TABLE	1
4	164719	WASHER, DOUBLE HOLE	1
5	164791	SCREW, PAN HD PHIL, M5x12mm	2

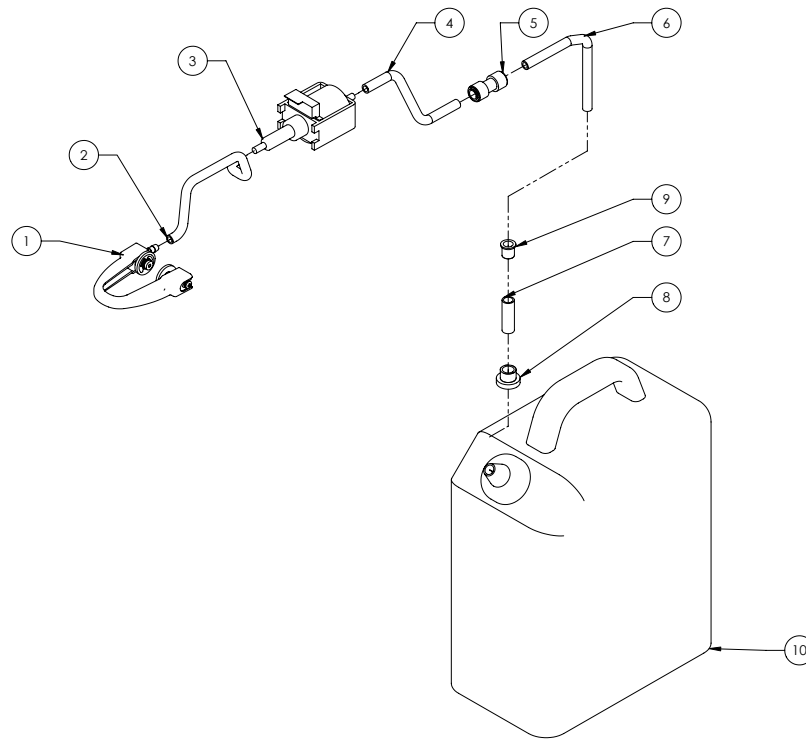
## ASSEMBLY MISTING SYSTEM & PART LIST



### MODULE, MISTING (P#166240)

ITEM NO.	PART NUMBER	DESCRIPTION	QTY.
1	164703	COVER, PLASTIC TUBE	1
2	164704	TUBING, PVC, 1/4x3/16x3.55"	1
3	164702	FITTING, SHORT	1
4	164701	FITTING, LONG	1
5	165009	O-RING, 7.8x1.9mm	2
6	164700	ADAPTER, NOZZLE	2
7	164699	NOZZLE, .012"	2
8	166194	WASHER, RUBBER, 26x12x3mm	2
9	166195	RING, E-RETAINING, 9mm	2
10	165007	WASHER, FLAT, M4	2
11	165006	SCREW, PAN HD PHIL, M4x8mm	2

# ASSEMBLY MISTING SYSTEM WATER TANK & PART LIST



## KIT, MISTING (P#165013-MK)

ITEM NO.	PART NUMBER	DESCRIPTION	QTY.
1	166240	MODULE, MISTING	1
2	165008	TUBING, POLYURETHANE, 3/8x.245x19	1
3	164693	PUMP	1
4	165005	TUBING, POLYURETHANE, 3/8x.245x24	1
5	165004	COUPLING, PUSH-TO-CONNECT, 3/8x3/8	1
6	164692	TUBING, PVC, 3/8x1/4x51"	1
7	165001	TUBING, PVC, 1/2x3/8x1-1/2	1
8	164691	FILTER	1
9	165003	GROMMET	1
10	165002	CONTAINER, WATER	1
11	165011	INSTRUCTION SHEET (NOT SHOWN)	1
12	152566	CARTON, OUTER (NOT SHOWN)	1



---

# BX-4

---

## BRICK SAW WITH MISTING DUST CONTROL

### **CALIFORNIA PROPOSITION 65 MESSAGE:**

#### **WARNING**

Some dust created by power sanding, sawing, grinding, drilling, and other construction activities contain chemicals known [to the State of California] to cause cancer, birth defects or other reproductive harm.

Some examples of these chemicals are:

- Lead, from lead-based paints
- Crystalline silica, from bricks and cement and other masonry products and
- Arsenic and chromium, from chemically treated lumber

Your risk from these exposures varies depending on how often you do this type of work. To reduce your exposure to these chemicals, work in a well-ventilated area, and work with approved safety equipment, such as those dust masks that are specially designed to filter out microscopic particles.

**MK DIAMOND PRODUCTS, INC.**  
**1315 STORM PARKWAY**  
**TORRANCE, CA 90509-2803**  
**(310) 257-2845**