

MK-1318 CONCRETE GAS SAW

PARTS LIST

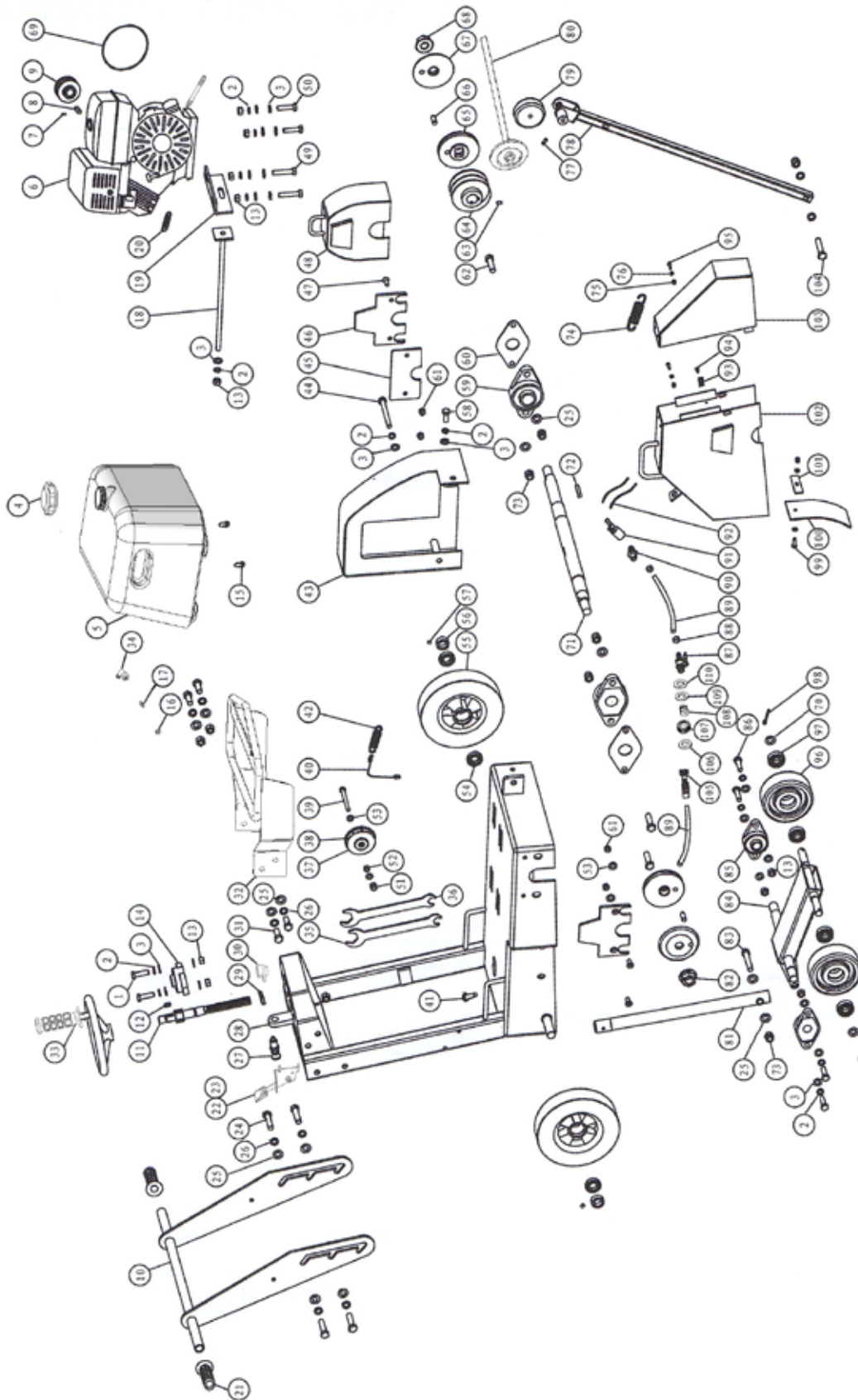


MK-1318 Honda

Revision 106	08.2018
Manual Part# 171159	

Caution: Read all safety and operating instructions before using this equipment. This owner's manual **MUST** accompany the equipment at all times.

MK-1318 Honda Engine Part # 171002



MK-1318 Honda Engine Part # 171002

Item	Description	Part #	Qty
1	HEX HEAD BOLT M10X40	171115	2
2	SPRING WASHER 10	171055	13
3	FLAT WASHER 10	171043	27
4	CAP, WATER TANK 2.5 DIA	156956	1
5	TANK, WATER 2016HSP	156644	1
	ENGINE,HONDA GX390 W/CYC	169260	1
6	HOSE, OIL DRAIN	157577-02	1
7	FLAT HD SET SCREW M6X12	171049	2
8	KEY	150796	1
9	ENGINE PULLEY	171114	1
10	ARMREST	171051	1
11	LEAD SCREW	171052	1
12	KEY 6X16	171054	1
13	HEX NUT M10	171046	11
14	BEARING	171056	1
15	SCREW, PAN HD, 1/4-20X3/4	153880	2
16	CLAMP, HOSE, 5/8	151198	2
17	COUPLING, 3/8 BARB	152076	1
18	DRAWBAR FOR BELT	171058	1
19	DRAWPLATE FOR BELT	171059	1
20	SPRING FOR ACCELERO	171156	1
21	GRIP	171044	2
22	ASSEMBLY, THROTTLE HEAD	155406	1
	SCREW, 10-24 X 1/2 PAN HEAD PHILLIPS CAP	151744	2
	NUT, 10-24 CLIP	155407	2
23	CABLE, THROTTLE, HONDA	154158	1
24	HEX HEAD BOLT M12X55	171062	4
25	FLAT WASHER 12	171063	24
26	SPRING WASHER 12	171064	8
27	LEAD SCREW LOCKING ASSY	171066	1
28	FRAME	171118	1
29	ROUND NUT M20X1.5	171067	1
30	ENGINE SWITCH, HONDA	157851	1
	WIRE HARNESS, PREMIUM, HONDA (NOT SHOWN)	156633	1
31	HEX HEAD BOLT M12 X30	171068	4
32	LIFTING BAIL, MK-1318 SERIES	171158	1
33	ASSY, DEPTH CTRL WHEEL	155457	1
34	ELBOW, 90 DEG. STREET, 3.8, NYLON	157895	1
35	WRENCH, 30-19	171069	1
36	WRENCH, 30-14	171119	1
37	CUTTING DEPTH DIAL	171071	1
38	RULER	171140	1
39	HEX HEAD BOLT M6X45	171072	1
40	CABLE WIRE	171076	1
41	EYEBOLT, M8	171251	1
42	SPRING	171078	1
43	BELT COVER	171079	1
44	HEX HEAD BOLT M10X120	171126	1

MK-1318 Honda Engine Part # 171002

Item	Description	Part #	Qty
45	BACKING BOARD	171080	1
46	LOCATION PLATE	171081	2
47	HEX SOCKET COUNTERSUNK SCREW M8X20	171120	4
48	SPINDLE GUARD	171121	1
49	HEX BOLT M10X50	171122	2
50	HEX HEAD BOLT M10X45	171146	2
51	NONMETAL HEX LOCKNUT M6	171075	4
52	THIN NUT M6	171074	3
53	FLAT WASHER 6MM	171073	10
54	BEARING 60000	171141	4
55	REAR WHEEL	171083	2
56	RETAINING RING	171084	2
57	HEX SET SCREW M6X8	171142	2
58	HEX BOLT M10X25	171123	1
59	BEARING	171085	2
60	BACKING BOARD	171086	2
61	LOCK NUT M8	171147	4
62	HEX BOLT M12X45	171124	4
63	FLAT HD SET SCREW M6X12	171049	2
64	BLADE SHAFT PULLEY	171089	1
65	INNER PLATEN	171125	2
66	COLUMN PIN 10M6X26	171090	2
67	OUTSIDE PLATEN	171127	2
68	RIGHT-HAND THREADED NUT	171128	1
69	BELT	171041	2
70	WASHER GB848-16	171042	4
71	SPINDLE	171129	1
72	KEY 8X45	171092	1
73	NONMETAL HEX LOCKNUT M12	171088	4
74	SPRING FOR BLADE COVER	171096	2
75	NONMETAL HEX LOCKNUT M5	171094	3
76	HEX NUT M5	171108	4
77	WING BOLT M6X50	171130	1
78	GUIDE LEVER	171131	1
79	POLYURETHANE WHEEL 75X27	171098	1
80	ASSY, POINTER WHEEL, LONG	168573	1
81	TUBE	171100	1
82	LEFT-HAND THREADED NUT	171132	1
83	HEX SCREW M12X65	171143	1
84	FORE CARRIAGE	171101	1
85	BEARING UCFLU204	171056	2
86	HEX HEAD BOLT 5/8X3-1/2	171133	4
	WATER VALVE	171113	1
87	HOSE JOINT	171144	1
88	PIPE CLAMP JOINT	171045	2
89	HOSE, WATER VINYL 3/8X1/2	150845	1
90	PIPE JOINT	171045	1

MK-1318 Honda Engine Part # 171002

Item	Description	Part #	Qty
91	TEE JOINT	171104	1
92	FLEXIBLE CONDUIT 0.4M	171105	2
93	CLAMP	171106	2
94	RIVET	171107	2
95	HEX HEAD BOLT M5X16	171157	4
96	WHEEL	171109	2
97	BEARING	171135	2
98	SPLIT PIN	171136	2
	HEX HEAD BOLT M6X20	171110	1
	FLAT WASHER 6	171073	2
99	NONMETAL HEX LOCKNUT M6	171075	1
100	WATER CURTAIN	171137	1
101	WATER CURTAIN CLAMP	171111	1
102	BLADE COVER I	171138	1
103	BLADE COVER II	171139	1
104	HEX HEAD BOLT M12X50	171112	1
105	FITTING, 3/8ID	171053	1
106	RUBBER WASHER	171093	1
107	FITTING THREADED, INSIDE	170923	1
108	FITTING THREADED, OUTSIDE	171082	1
109	RING 20	171077	1
110	FLAT WASHER 20 GALVANIZED	171102	1
	CARTON (NOT SHOWN)	171250	1

THEORY OF DIAMOND BLADES

Diamond blades do not really cut; they grind the material through friction. Diamond crystals, often visible at the leading edge and sides of the rim/segment, remove material by scratching out particles of hard, dense materials, or by knocking out larger particles of loosely bonded abrasive material. This process eventually cracks or fractures the diamond particle, breaking it down into smaller pieces. As a result, a diamond blade for cutting soft, abrasive material must have a hard metal matrix composition to resist this erosion long enough for the exposed diamonds to be properly utilized. Conversely, a blade for cutting a hard, non-abrasive material must have a soft bond to ensure that it will erode and expose the diamonds embedded in the matrix. These simple principles are the foundation of “controlled bond erosion”



Types of Cutting

There are two basic types of cutting-Dry or Wet. The choice of which type of blade to use depends on:




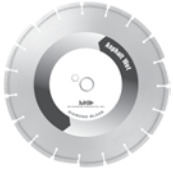


- The requirements of the job
- The machine/tool utilizing the diamond blade
- The preference of the operator

In the case of DRY cutting, the overwhelming popularity and quantity of hand-held saws and the flexible nature of MK Diamond blades to professionally handle most ceramic, masonry, stone and concrete materials, make the DRY cutting blade a very attractive tool. When using a DRY blade, the user must be aware of distinct operating practices to ensure optimum performance. DRY cutting blades require sufficient airflow about the blade to prevent overheating of the steel core. This is best accomplished by shallow, intermittent cuts of the material with periods of “free-spinning” (for several seconds) between each cut, to maximize the cooling process.

For WET cutting applications, MK has the exact blade to compliment both the material to be cut and the wet cutting machine to be used. During cutting operations, liberal amounts of water act as a coolant to support the cutting effectiveness and longevity of the WET blade. Additionally, using water adds to the overall safety of cutting operations by keeping the dust signature down.

Know All You Can About the Material You Wish to Cut

ACCESSORIES

ITEM	NUMBER	DESCRIPTION	
1	134965	MK-500 18" x .125 x 1" Standard grade wet cutting blade for cured concrete	
2	129072	MK-505 18" x .125 x 1" Premium grade, wet cutting blade for cured concrete	
3	134965	MK-525 18" x .125 x 1" Supreme grade, wet cutting blade for cured concrete	
4	133850	MK-705W 18" x .142 x 1" Premium grade, wet cutting blade for asphalt	
5	139162	MK-610W 18" x .142 x 1" Supreme grade, wet cutting blade for green concrete	
6	153550	MK-465D 18" x .142 x 1" Premium grade, dry cutting blade for asphalt and green concrete	

ORDERING INFORMATION

You may order MK Diamond products through your local MK Diamond distributor or, you may order direct from MK Diamond.

When ordering direct from MK Diamond, please have the following information ready before calling:

- The Model Number of the saw
- The Serial Number of the saw
- Where the saw was purchased and when
- The Part Number for the part(s) being ordered
- The Part Description for the part(s) being ordered

NOTE: There is a \$25.00 minimum order when ordering direct from MK Diamond. A \$6.00 charge will be added to orders having a net billing value under \$50.00. All purchases must be made using VISA, MasterCard or American Express.

All parts may be ordered by calling toll free to – 800 421-5830 or 310 539-5221 and asking for Customer Service. For technical questions, call – 800 474-5594.

RETURN MATERIALS POLICY

To expedite the service relative to the return of a product purchased through MK Diamond, please observe the following:

NOTE: When returning all items, they must have been purchased within the previous twelve (12) months.

- Have the Model Number of the saw
- Have the Serial Number of the saw
- Have the location of where the saw was purchased
- Have the date when the saw was purchased
- Contact Customer Service for approval to return the item(s)
- Obtain a Returned Goods Number (RGA) authorizing the return
- Follow the packaging instructions in the following section
- Ensure your item(s) are prepaid to the destination

For returned items, call toll free to – 800 421-5830 or 310 539-5221 and ask for Customer Service. For technical questions, call – 800 474-5594 or 310 257-2845.

PACKAGING INSTRUCTIONS

- Remove the Cutting Head and Support Angle Assembly
- Dry the saw before shipping
- When packing, include the following: Saw, Diamond Blade, Blade Guard and Support Angle Assembly and Adjustable Cutting Guide (Other Accessories are not required)
- Package the unit in its original container or one of comparable size (do not ship the unit partially exposed)
- Ensure all parts are secured in the packaging to prevent moving

AUTHORIZED SERVICE CENTERS

For quicker repair time, you may contact MK Diamond Customer Service, toll free, at 800 421-5830 or 310 539-5221 for the Authorized Service Center closest to you or visit our web site at www.mkdiamond.com. For technical questions, call – 800 474-5594.

CONTACT

Please contact MK Diamond Products, Inc. Customer Service Department with any questions you might have regarding distributors, parts or service.

Telephone: **(800) 421-5830**

Fax: **(310) 539-5158**

E-mail: **Customer_Service@MKDiamond.com**

Customer Service Hours: **Monday through Friday, 6AM-4PM PST**

MK Diamond Products, Inc.
1315 Storm Parkway
Torrance, CA 90501

MK DIAMOND PRODUCTS, INC. LIMITED WARRANTY

MK DIAMOND PRODUCTS, INC. will guarantee every machine they build, to be free from defects in material and workmanship for (1) one year from date of purchase. The obligation of MK DIAMOND PRODUCTS, INC. under this warranty is limited to the repair or replacement of any parts which, under normal use, prove to be defective in material or workmanship. The parts involved or the unit in question should be returned to MK DIAMOND PRODUCTS, INC. or to a point designated by us, transportation prepaid.

This warranty does not obligate us to bear the cost of labor or transportation charges in connection with replacement or repair of defective parts. Likewise, it shall NOT apply to any unit which has been subjected to misuse, neglect or accident. This warranty does NOT apply to any machine which has been repaired or altered outside our factory.

This warranty does NOT obligate MK DIAMOND PRODUCTS, INC., with respect to items not of our manufacture, such as engines, motors, hydraulics, etc., which are subject to their own guarantees and warranties.

We shall in no event be liable for consequential damages or contingent liabilities arising out of failure of any equipment or parts to operate properly.

© COPYRIGHT 2018, MK DIAMOND PRODUCTS, INC. ALL RIGHTS RESERVED.

The MK Diamond logo is a registered trademark of MK Diamond Products, Inc. and may not be used, reproduced, or altered without written permission. All other trademarks are the property of their respective owners and used with permission.

MK Diamond may have patents, patent applications, trade marks, copyrights of other intellectual property right covering this product in this document.

This manual MUST accompany the equipment at all times. This manual is considered a permanent part of the equipment and should remain with the unit if resold.

The information and specifications included in this publication were in effect at the time of approval for printing.

MK-1318 CONCRETE SAW
OWNER'S MANUAL, OPERATING INSTRUCTIONS, &
PARTS LIST



MK Diamond Products, Inc.

MK Diamond Products, Inc.
1315 Storm Parkway
Torrance, CA 90501

Toll-Free: (800) 421-5830
Phone: (310) 539-5221
Fax: (310) 539-5158
www.mkdiamond.com