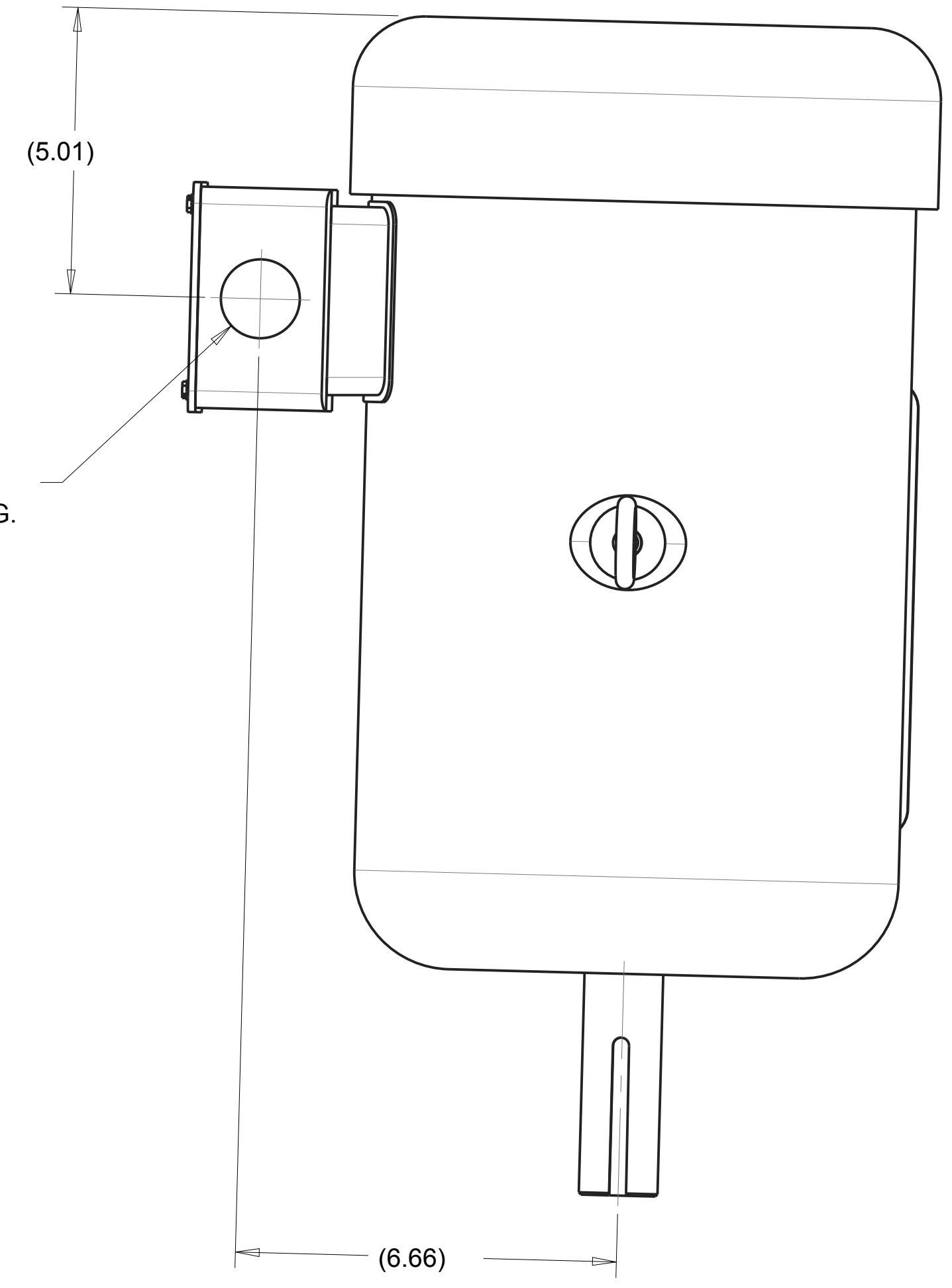
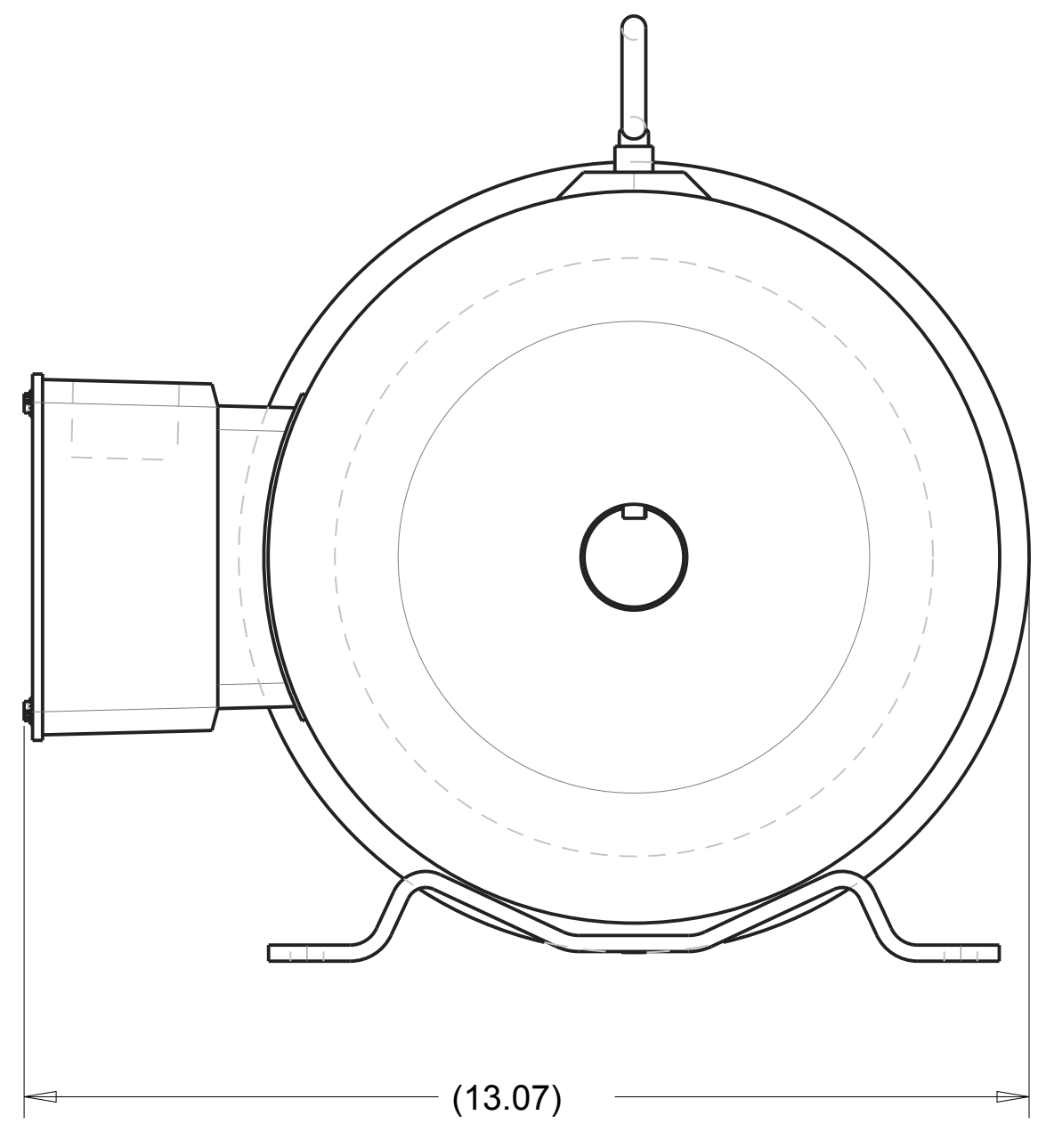
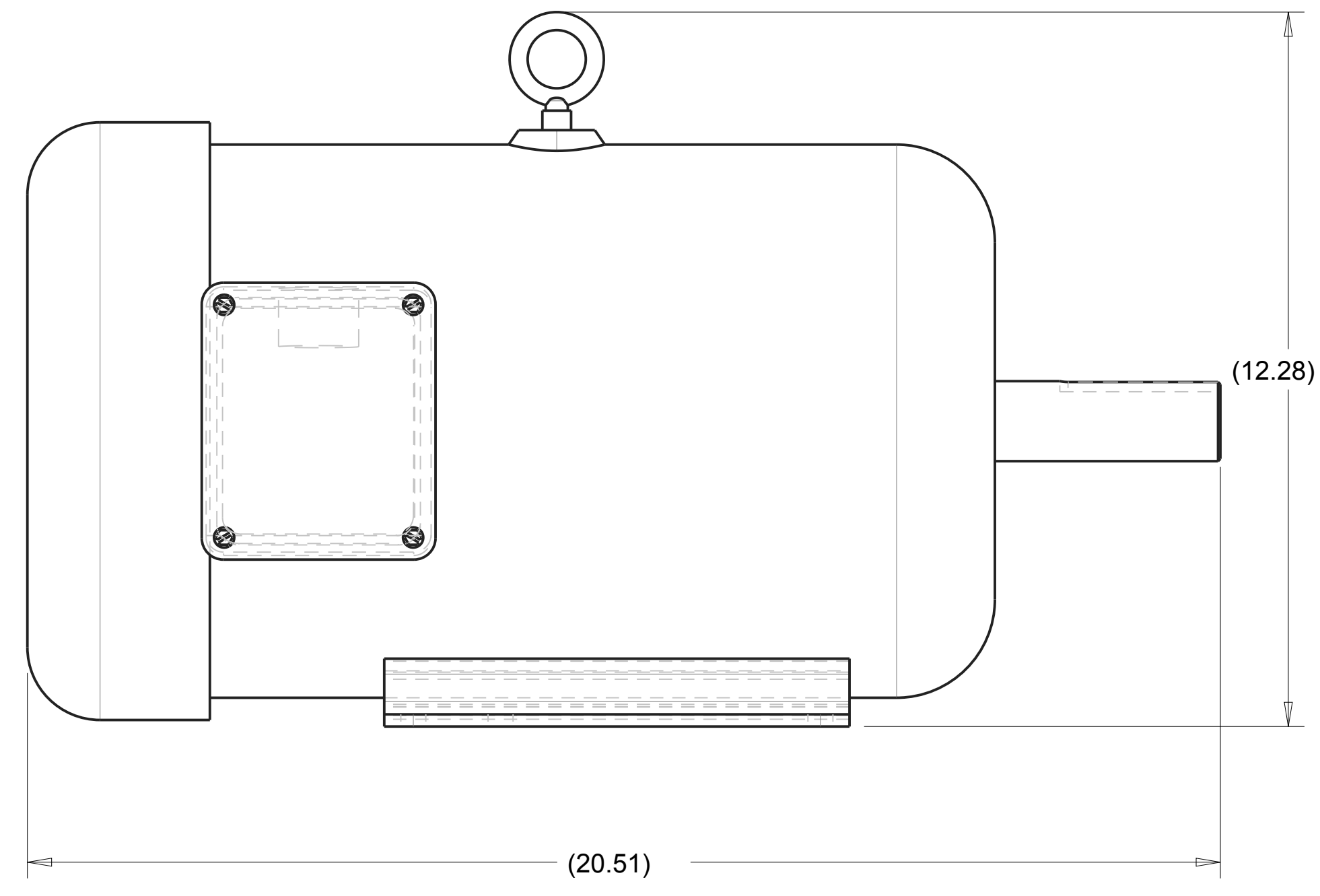


NOTES:  
 1. SEE MOTOR ASSEMBLY DRAWING, 172901, FOR WIRING DIAGRAM.  
 2. CAN BE REPLACED WITH 172900-WEG ON JOBS WHEN BALDOR MOTOR IS NOT AVAILABLE.

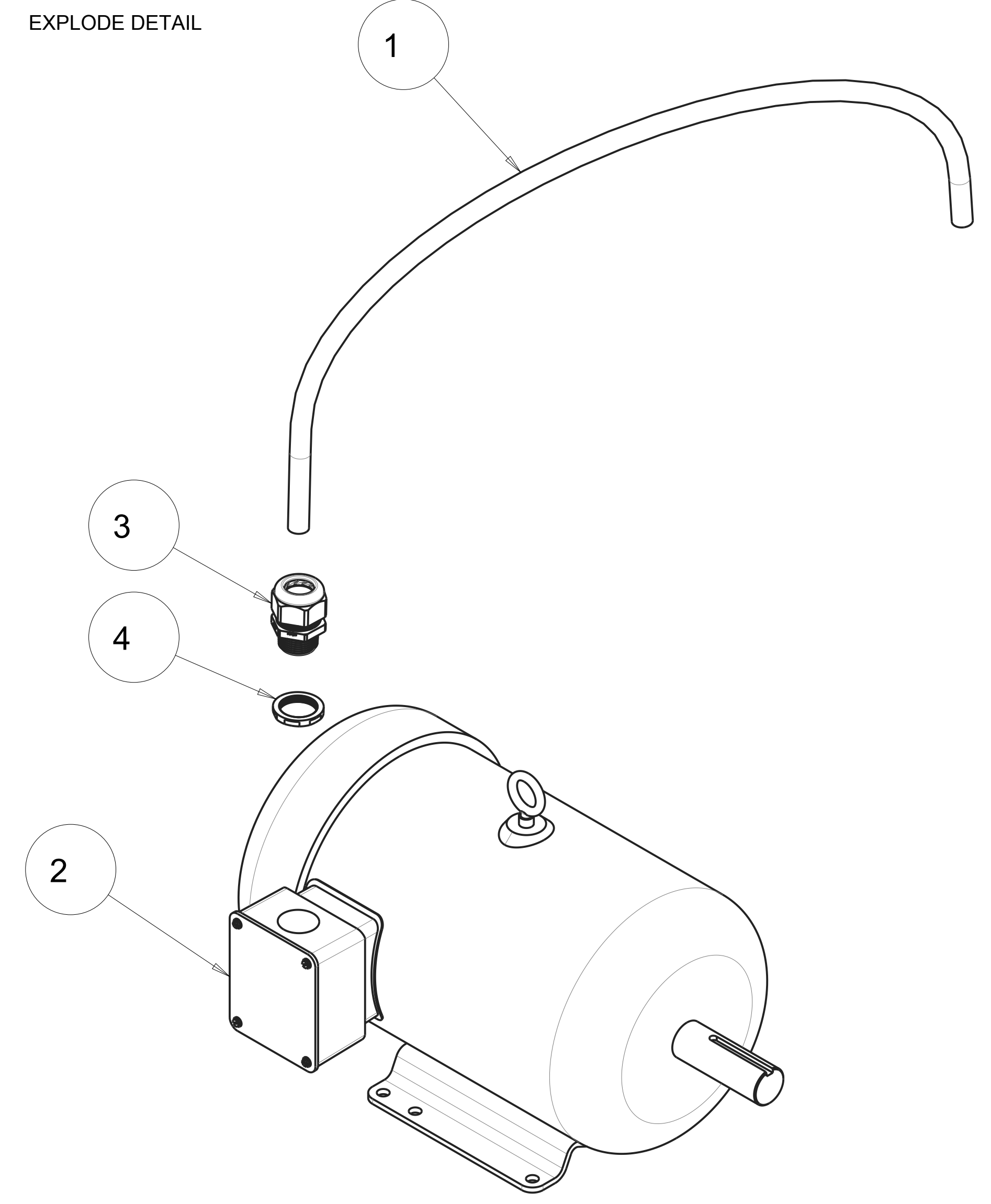
REVISIONS				
ZONE	REV.	DESCRIPTION	DATE	APPROVED
-	-	INITIAL RELEASE, ECO# 2450	10/03/19	SSH



MOTOR ARRIVES WITH Ø 1.38 LEAD HOLE.  
 ORIENT BOX AS SHOWN IN DRAWING.




EXPLODE DETAIL

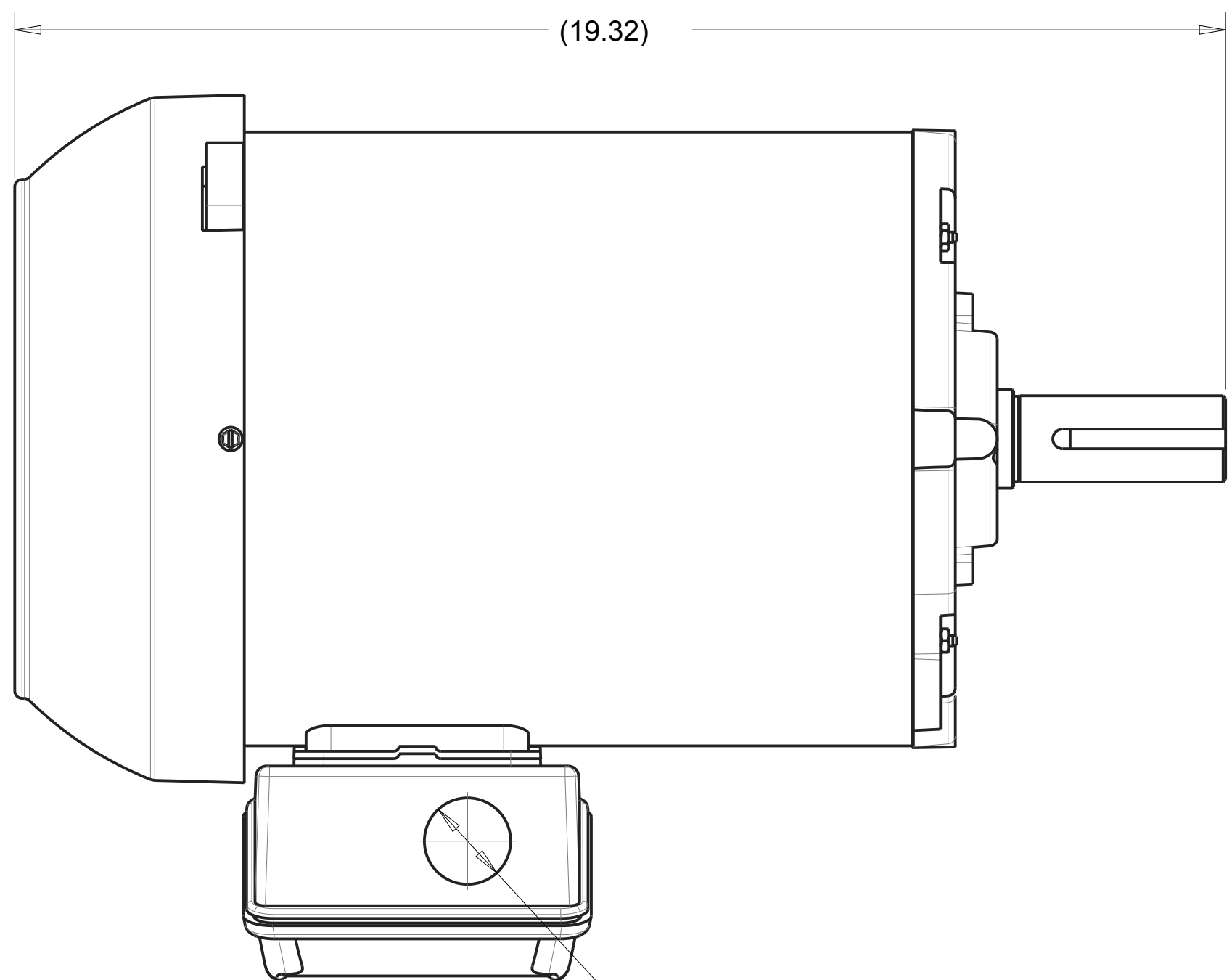


SCALE 0.300

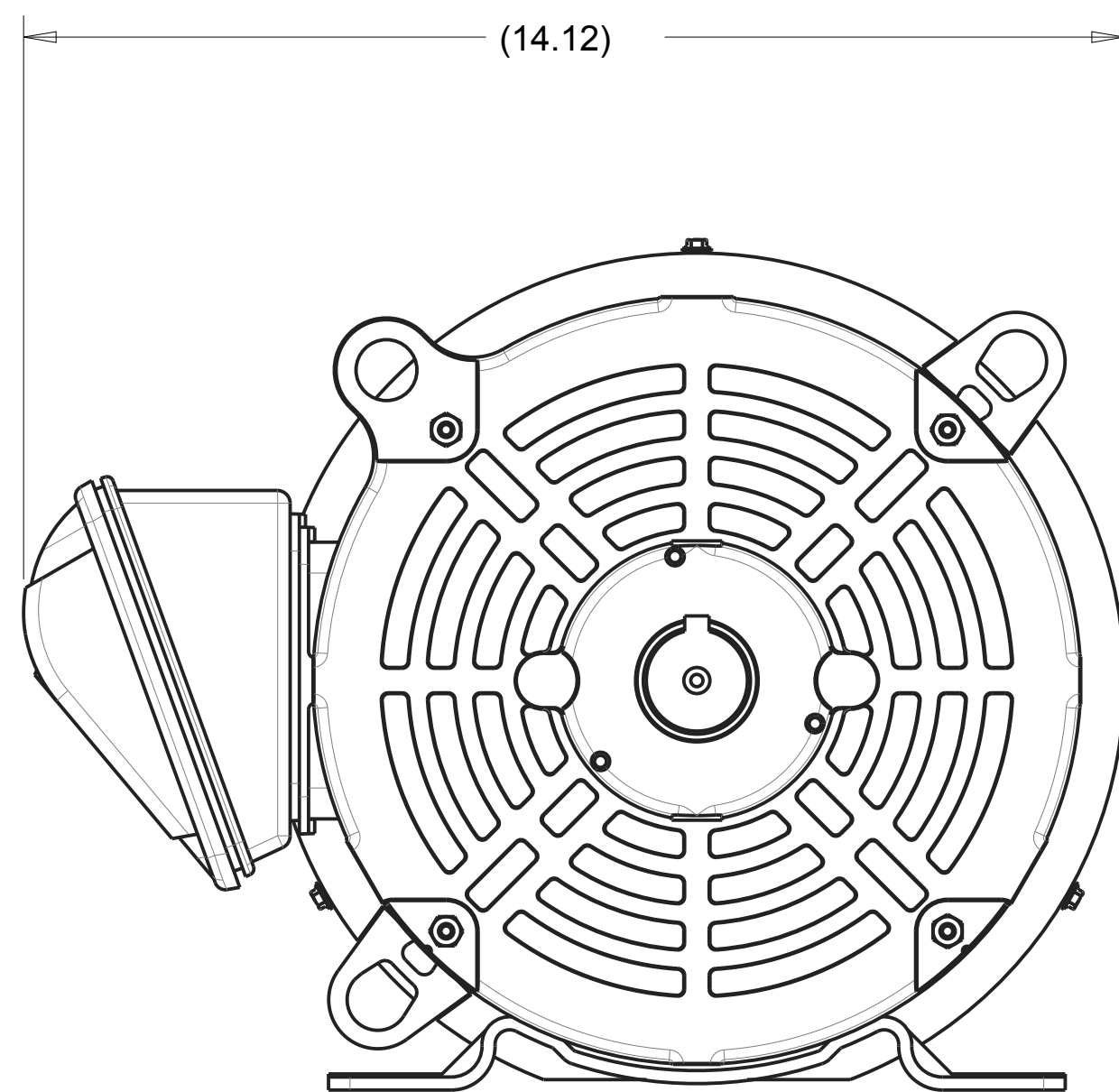
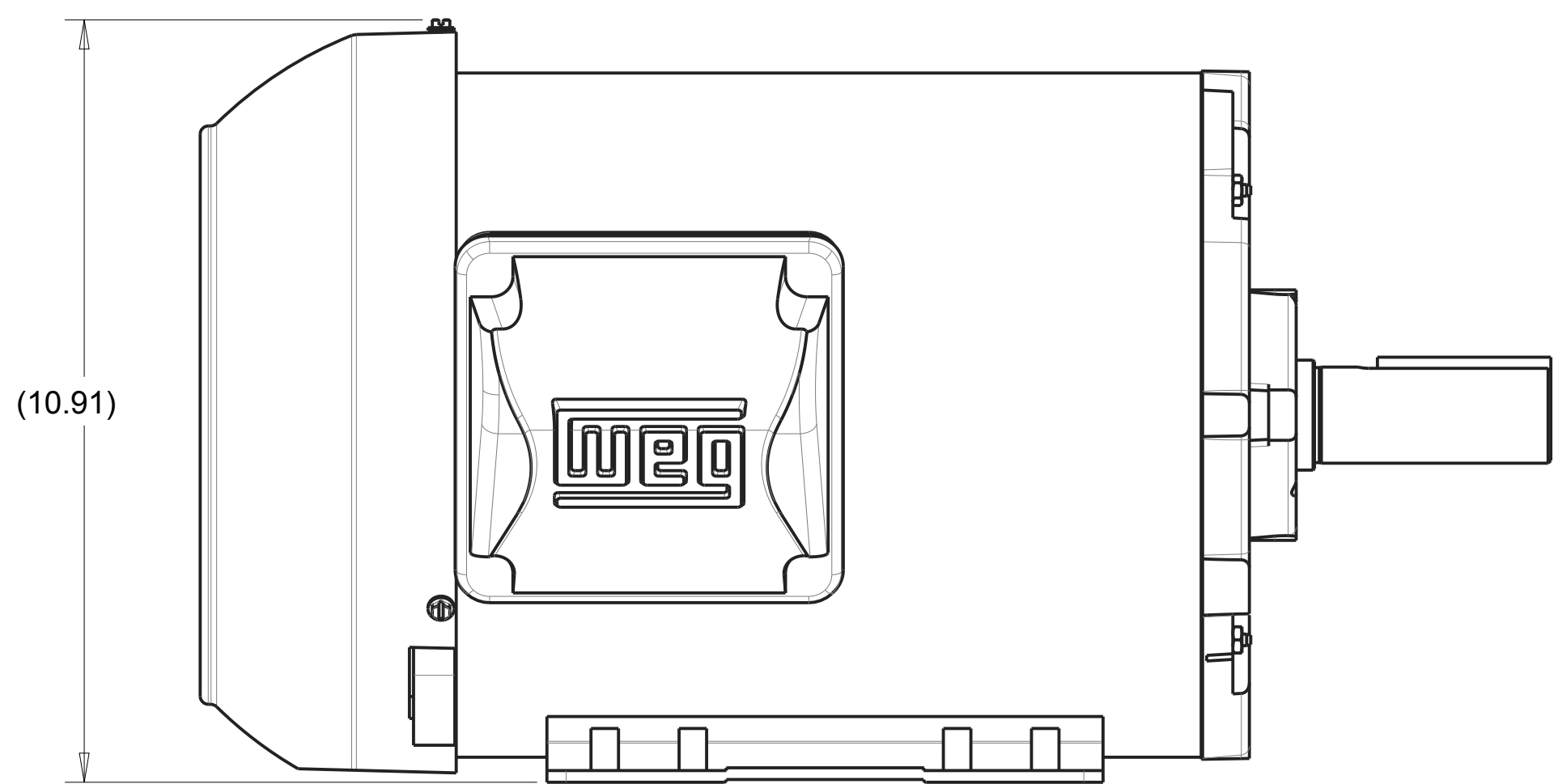
QTY. REQ.	PART OR IDENTIFYING NO.	DESCRIPTION	ITEM NO.
1	172898	NUT, STRN RLF, PLAS, 1NPT	4
1	172843	CONNECTOR, CORD, LTF1	3
1	166785	MTR, 10HP 575V 3PH 1750RPM EM3714T-5	2
1	156215_09	CORD, ELEC, 10/4 SEOWW, YELLOW (4.5 FT)	1

TOLERANCES UNLESS OTHERWISE SPECIFIED		DATE		 MK DIAMOND PRODUCTS INC. 1315 STORM PARKWAY TORRANCE, CA. 90509	
DIMENSIONS ARE IN INCHES		DRAWN	SSH		10/03/19
WHOLE NO. AND FRACTIONS = 1/16 (EXCEPT DRILL HOLES)		CHECK	xxx		xxx/xx/xx
X = ±.03 XX = ±.010 XXX = ±.005 ANGLES = ±1/2°		DESIGN	SSH		10/03/19
DO NOT SCALE DRAWING		APPLICATION		PROPRIETARY NOTICE: THIS DRAWING AND INFORMATION IT CONTAINS ARE THE PROPERTY OF MK DIAMOND INC. AND ARE CONSIDERED CONFIDENTIAL AND MAY NOT BE REPRODUCED, COPIED, OR USED IN PART OR IN WHOLE WITHOUT THE WRITTEN CONSENT OF MK DIAMOND PRODUCTS INC.	
SCALE: 0.450		SIZE	D	PART NO. 172900 DWG. NO. 172900 REV. -	
SHEET: 1 of 2					

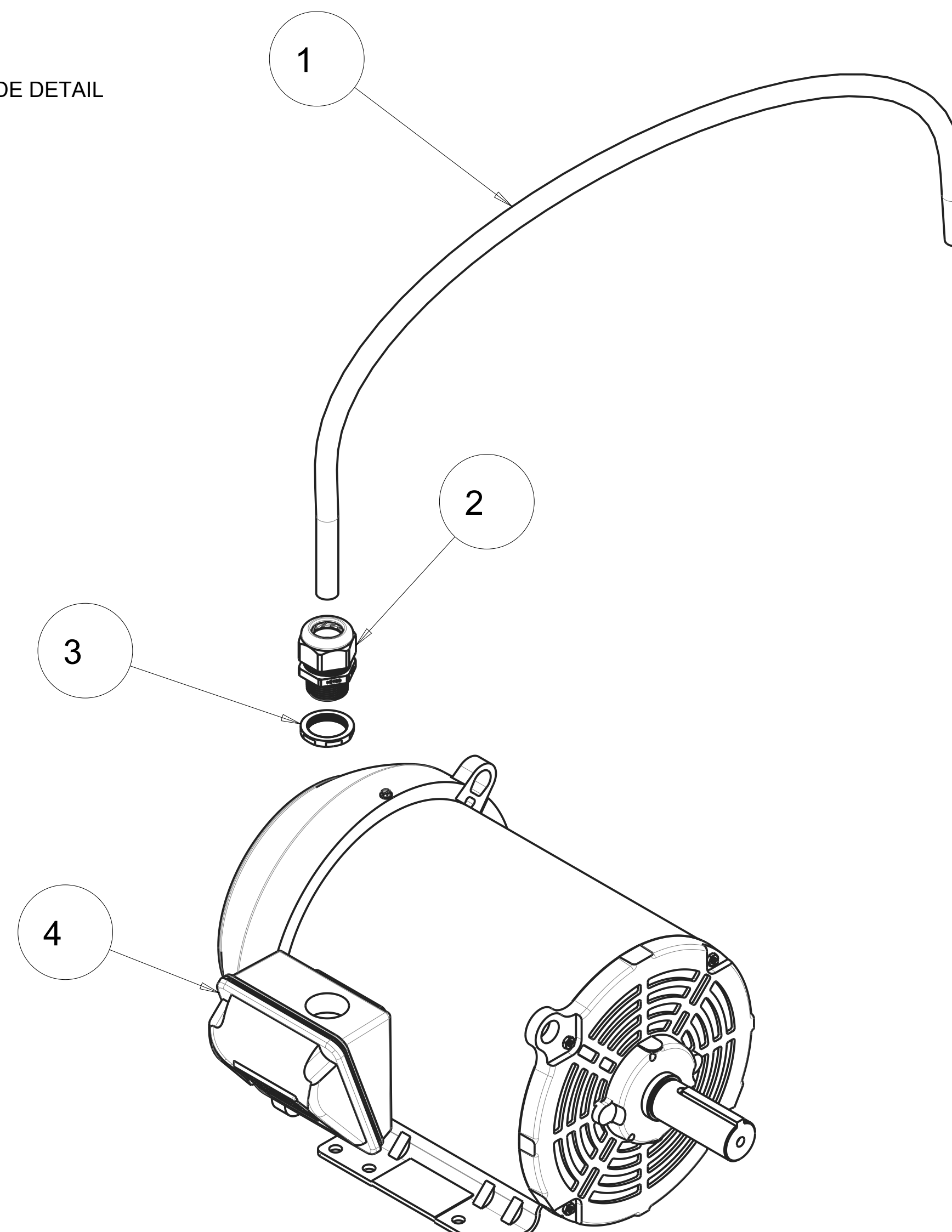
NOTES:  
 1. SEE MOTOR ASSEMBLY FOR WIRING DIAGRAM.  
 2. CAN BE USED TO REPLACE 172900 ON JOBS WHEN BALDOR MOTOR IS NOT AVAILABLE.



MOTOR ARRIVES WITH  $\varnothing$  1.38 LEAD HOLE.  
 ORIENT BOX AS SHOWN IN DRAWING.



EXPLODE DETAIL



SCALE 0.300

QTY. REQ.	PART OR IDENTIFYING NO.	DESCRIPTION	ITEM NO.
1	172902	MTR, 10HP 575V 3PH 1725RPM WEG 01018ET3H215T-S	4
1	172898	NUT, STRN RLF, PLAS, 1NPT	3
1	172843	CONNECTOR, CORD, LTF1	2
1	156215_10	CORD, ELEC, 10/4 SEOWW, YELLOW (4.5 FT)	1

TOLERANCES UNLESS OTHERWISE SPECIFIED		DATE	
DIMENSIONS ARE IN INCHES		DRAWN	
WHOLE NO. AND FRACTIONS = 1/16 (EXCEPT DRILL HOLES)		CHECK	
X = ±.03		DESIGN	
XX = ±.010		NEXT ASSY.	
XXX = ±.005		-	
ANGLES = ±1/2°		PROPRIETARY NOTICE: THIS DRAWING AND INFORMATION IT CONTAINS ARE THE PROPERTY OF MK DIAMOND INC. AND ARE CONSIDERED CONFIDENTIAL AND MAY NOT BE REPRODUCED, COPIED, OR USED IN PART OR IN WHOLE WITHOUT THE WRITTEN CONSENT OF MK DIAMOND PRODUCTS INC.	
DO NOT SCALE DRAWING		SCALE	0.450
APPLICATION		PART NO.	172900-WEG
		DWG. NO.	172900-WEG
		REV.	-

**MK** MK DIAMOND PRODUCTS INC.  
 1315 STORM PARKWAY  
 TORRANCE, CA. 90509

**MK-5010T BLOCK SAW**  
 MTR, 10HP 575V 3PH 1725RPM WEG -COMP

SIZE **D** PART NO. 172900-WEG DWG. NO. 172900-WEG REV. -