


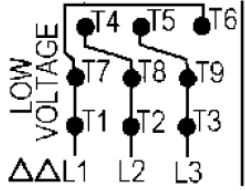
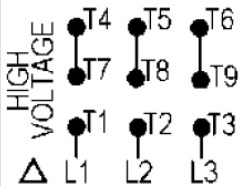



MK Diamond Products, Inc.  
 1315 Storm Parkway  
 Torrance, CA 90509-2803

<b>SPECIFICATION SHEET</b>		Date 11/28/18
MK Part Number <b>172776</b>	MK Description MTR, 7.5HP 230/460V 3PH 1725RPM WEG	Revision -
Manufacturer/Supplier P/N 00718ET3E213T-S	Manufacturer/Vendor Description STEEL NEMA PREMIUM EFFICIENCY 3PH 7.5HP	
Manufacturer Information WEG INDUSTRIES JARAGUA DO SUL, BRAZIL	Supplier Information HILL HOUSE PRODUCTS SAN CLEMENTE, CA	Alternate Manufacturer See Approved Alternate

Specifications:

		<b>NEMA Premium</b>			3PT9 US LISTED FOR SAFE AREA		US Energy Verified
MADE IN MEXICO				For 60Hz: Class I, Zone 2, IIC			
MAT: 12675405		CC029A		Class I, Div.2, Gr. A,B,C,D - T3			
W01.TE0IC0X0N				Div 2 Inverter Duty (SF1.00)			
MODEL 00718ET3E213T-S				CT 2:1/VT 1000:1			
27AGO2019	S/N:						
PH 3	FR	213/5T	HP(kW)	7.5(5.5)	Hz	60	
V 230/460				RPM 1770			
A 18.1/9.07				DUTY CONT.			
SFA 20.8/10.4				CODE H	DES B	IP55	
SF 1.15		INS CL F	ΔT 80K	AMB 40°C	ENCL TEFC		
PF 0.82		NEMA NOM.EFF. 91.7%					
ALT 1000 m.a.s.l.		USABLE @ 208V 20.1A SF1.00					
ALTERNATE RATING: 7.5HP 50Hz 190-220/380-415V SF1.00							
22.0-19.4/11.0-10.3A 1455RPM EFF 88.6% (IE2) IEC 80034-1							
LOW VOLTAGE		HIGH VOLTAGE					
				T1-BLU T2-WHT T3-ORG T4-YEL T5-BLK T6-GRY T7-PNK T8-RED T9-BRK RED			
INTERCHANGE ANY TWO LINE WIRES TO REVERSE THE ROTATION							
For safe area-inverter duty motor For 60Hz use on VPWM 1000:1 VT, 4:1 CT							
DE: 6208-ZZ		ODE: 6206-ZZ		MOBIL POLYREX EM			
<b>WARNING: Motor must be grounded in accordance with local and national electrical codes to prevent serious electrical shocks. Disconnect power source before servicing unit.</b>							
<b>AVERTISSEMENT: Le moteur doit être mis à la terre conformément aux codes électriques locaux et nationaux afin d'éviter tout choc électrique grave. Déconnectez l'alimentation avant l'entretien de la machine.</b>							

Approved Alternate

WEG 00718ET3E213TC-W22 (see pages 7 and 8)

Rev	Description	Date	Approved
-	INITIAL RELEASE, ECO# 2424	11/28/18	SSH

# DATA SHEET



## Three Phase Induction Motor - Squirrel Cage

Customer	: MK Diamond				
Customer reference	: 7.5HP block saw motor				
Product line	: Rolled Steel NEMA Premium Efficiency Three-Phase		Product code :	12675405	
			Catalog # :	00718ET3E213T-S	
Frame	: 213/5T		Locked rotor time	: 39s (cold) 22s (hot)	
Output	: 7.5 HP (5.5 kW)		Temperature rise	: 80 K	
Poles	: 4		Duty cycle	: Cont.(S1)	
Frequency	: 60 Hz		Ambient temperature	: -20°C to +40°C	
Rated voltage	: 208-230/480 V		Altitude	: 1000 m.a.s.l.	
Rated current	: 20.1-18.1/9.07 A		Protection degree	: IP55	
L. R. Amperes	: 146-132/88.2 A		Cooling method	: IC411 - TEFC	
LRC	: 7.3x(Code H)		Mounting	: F-1	
No load current	: 7.60-8.81/4.41 A		Rotation <sup>1</sup>	: Both (CW and CCW)	
Rated speed	: 1770 rpm		Noise level <sup>2</sup>	: 60.0 dB(A)	
Slip	: 1.67 %		Starting method	: Direct On Line	
Rated torque	: 22.0 ft.lb		Approx. weight <sup>3</sup>	: 120 lb	
Locked rotor torque	: 280 %				
Breakdown torque	: 300 %				
Insulation class	: F				
Service factor	: 1.15				
Moment of inertia (J)	: 0.9380 sq.ft.lb				
Design	: B				
Output	50%	75%	100%	Foundation loads	
Efficiency (%)	90.2	91.0	91.7	Max. traction	
Power Factor	0.64	0.76	0.82	Max. compression	
				: 395 lb	
				: 515 lb	
Bearing type	:	<u>Drive end</u>	<u>Non drive end</u>		
Sealing	:	6208 ZZ	6208 ZZ		
Lubrication interval	:	V'Ring	V'Ring		
Lubricant amount	:	-	-		
Lubricant type	:	Mobil Polyrex EM			
Notes					
This revision replaces and cancel the previous one, which must be eliminated.					
(1) Looking the motor from the shaft end.					
(2) Measured at 1m and with tolerance of +3dB(A).					
(3) Approximate weight subject to changes after manufacturing process.					
(4) At 100% of full load.					
These are average values based on tests with sinusoidal power supply, subject to the tolerances stipulated in NEMA MG-1.					
Rev.	Changes Summary		Performed	Checked	Date
Performed by					
Checked by					
Date	27/11/2018			Page	Revision
				1 / 3	

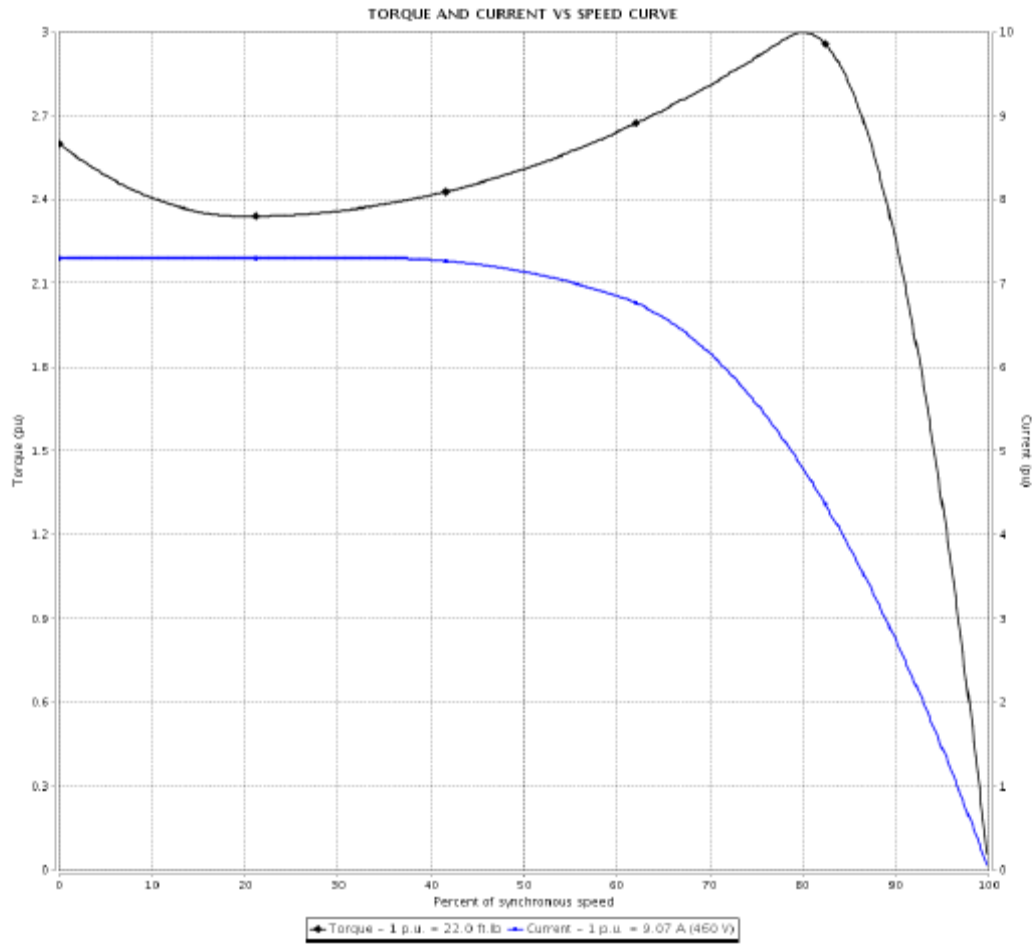
# TORQUE AND CURRENT VS SPEED CURVE

Three Phase Induction Motor - Squirrel Cage



Customer : MK Diamond  
 Customer reference : 7.5HP block saw motor

Product line : Rolled Steel NEMA Premium Efficiency Three-Phase      Product code : 12675405  
 Catalog # : 00718ET3E213T-S



Performance : 208-230/460 V 60 Hz 4P

Rated current : 20.1-18.1/9.07 A	Moment of inertia (J) : 0.9380 sq.ft.lb
LRC : 7.3	Duty cycle : Cont.(S1)
Rated torque : 22.0 ft.lb	Insulation class : F
Locked rotor torque : 280 %	Service factor : 1.15
Breakdown torque : 300 %	Temperature rise : 80 K
Rated speed : 1770 rpm	Design : B

Locked rotor time : 39s (cold) 22s (hot)

Rev.	Changes Summary	Performed	Checked	Date
Performed by			Page	Revision
Checked by			2 / 3	
Date	27/11/2018			

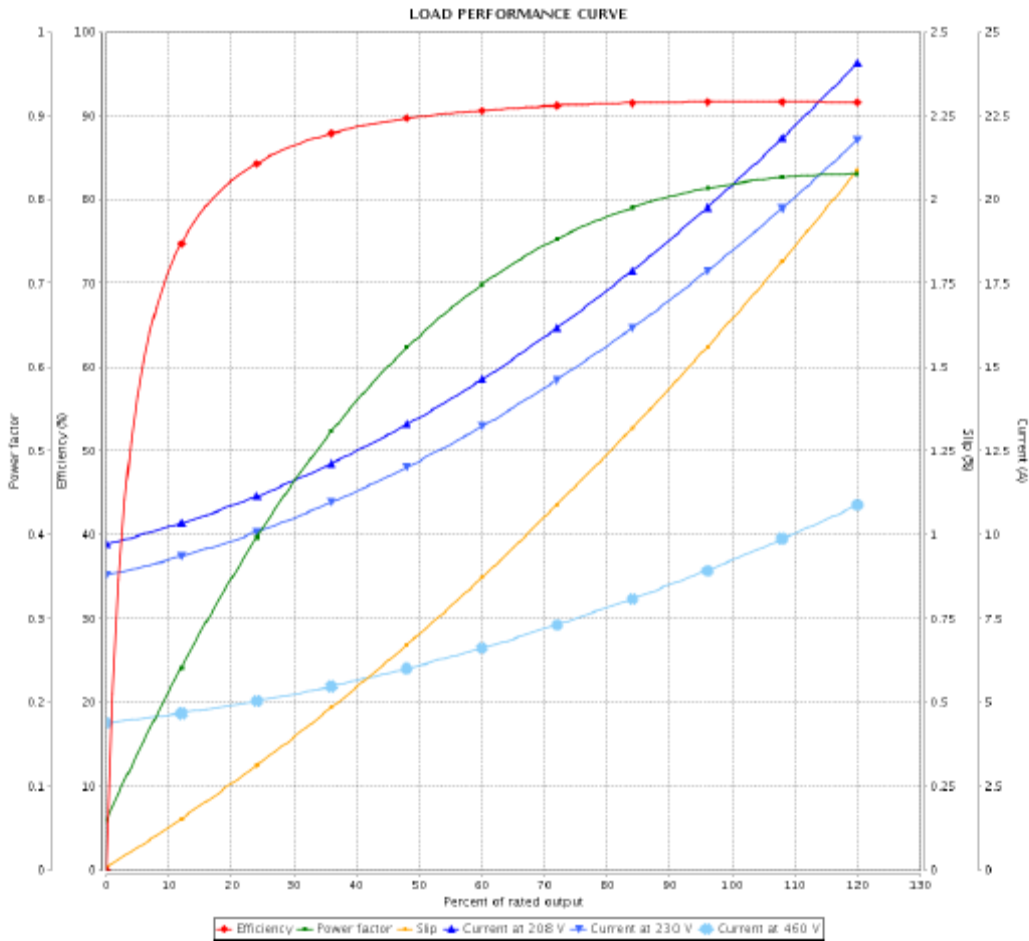
# LOAD PERFORMANCE CURVE

## Three Phase Induction Motor - Squirrel Cage



Customer : MK Diamond  
 Customer reference : 7.5HP block saw motor

Product line : Rolled Steel NEMA Premium Efficiency Three-Phase  
 Product code : 12675405  
 Catalog # : 00718ET3E213T-S



Performance : 208-230/460 V 60 Hz 4P

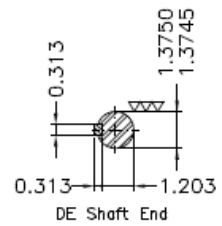
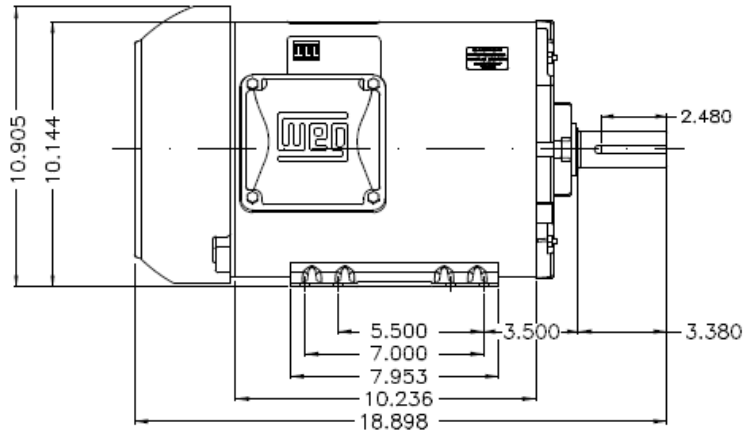
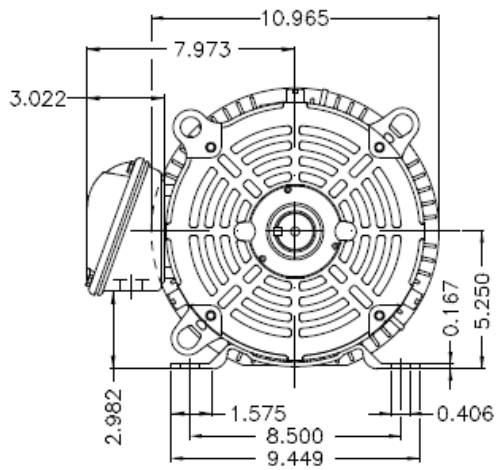
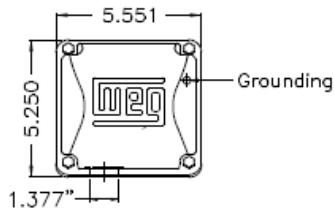
Rated current : 20.1-18.1/9.07 A	Moment of inertia (J) : 0.9380 sq.ft.lb
LRC : 7.3	Duty cycle : Cont.(S1)
Rated torque : 22.0 ft.lb	Insulation class : F
Locked rotor torque : 260 %	Service factor : 1.15
Breakdown torque : 300 %	Temperature rise : 80 K
Rated speed : 1770 rpm	Design : B

Rev.	Changes Summary	Performed	Checked	Date
Performed by			Page	Revision
Checked by			3 / 3	
Date	27/11/2018			

This document is exclusive property of WEG S/A. Reprinting is not allowed without written authorization of WEG S/A.  
 Subject to change without notice

Dimensões em polegada  
Dimensions in inches

THIS IS AN UPDATED REVISION, THE  
PREVIOUS ONE MUST BE DISREGARDED.



Color Munsell N 1 matte black  
Painting plan 207N  
Mounting F-1/B3R(D)

ECM	LOC	SUMMARY OF MODIFICATIONS	EXECUTED	CHECKED	RELEASED	DATE	VER
EXECUTED	USERADMN	THREE P. MOTOR CLOS ROLLED STEEL NEMA PREM FRAME 213/ST IP55 TEFC WEG code: 12875405					
CHECKED							
RELEASED							
REL DT	27.11.2018	WMO	Jorge do Sul	Product Engineering	SHEET	1 / 1	



7.5 HP 04 Poles 60Hz

# Three-Phase Wiring Diagrams

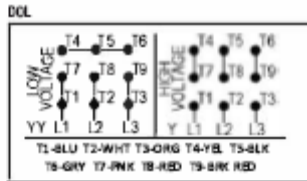
ALWAYS USE WIRING DIAGRAM SUPPLIED ON MOTOR NAMEPLATE

colored leads are only applicable on the NEW ROLLED STEEL motor lines

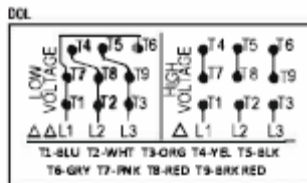
**Description**

**Wiring Diagram**

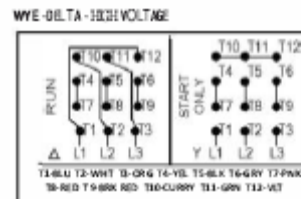
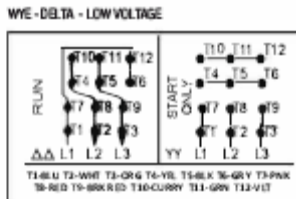
9 leads  
Valid for voltage Code: E  
Frames 55 and 143.5



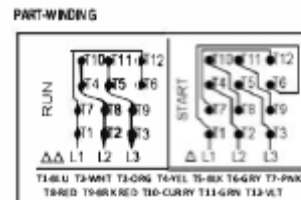
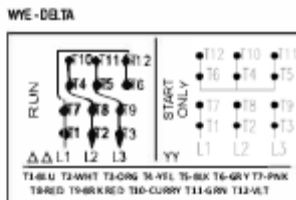
9 leads  
Valid for voltage Code: E  
Frames 182A and 213/5 for E code  
(except Fire Pump motors)



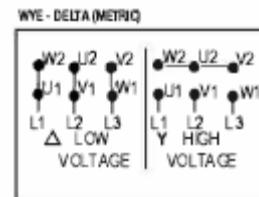
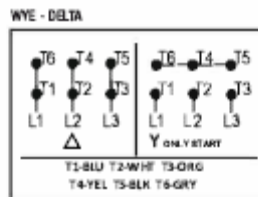
12 leads  
Valid for voltage code: E  
Frames 254B and above  
Fire Pump Motors all frames  
Valid for voltage code: V  
All frames  
Motors are capable of WYE/Delta start (230v only)  
Motors are capable of part-winding start at the low voltage



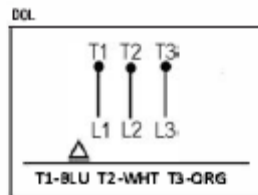
12 leads  
Valid for voltage Code: G  
Frames 254B and above  
Motors are capable of WYE/Delta start Motors are capable of part-winding start



6 leads  
Valid for voltage Code: J, H, P, Q, W & Y All frames  
Q code can also have only 3 leads



3 leads  
Valid for voltage Code: Q  
All frames  
Q code, non IEEE-841 motors, can also have 6 leads



# DATA SHEET



## Three Phase Induction Motor - Squirrel Cage

Customer : \_\_\_\_\_

Product line : NEMA Premium Efficiency Three-Phase  
 Product code : 12445969  
 Catalog # : 00718ET3E213TC-W22

Frame	: 213/5TC	Locked rotor time	: 36s (cold) 20s (hot)
Output	: 7,5 HP (5,5 kW)	Temperature rise	: 80 K
Poles	: 4	Duty cycle	: Cont.(S1)
Frequency	: 60 Hz	Ambient temperature	: -20°C to +40°C
Rated voltage	: 230/460 V	Altitude	: 1000 m.a.s.l.
Rated current	: 18,4/9,18 A	Protection degree	: IP55
L. R. Amperes	: 130/65.2 A	Cooling method	: IC411 - TEFC
LRC	: 7.1x(Code H)	Mounting	: F-1
No load current	: 8,80/4,40 A	Rotation <sup>1</sup>	: Both (CW and CCW)
Rated speed	: 1765 rpm	Noise level <sup>2</sup>	: 58,0 dB(A)
Slip	: 1,94 %	Starting method	: Direct On Line
Rated torque	: 22,3 ft.lb	Approx. weight <sup>3</sup>	: 171 lb
Locked rotor torque	: 220 %		
Breakdown torque	: 310 %		
Insulation class	: F		
Service factor	: 1,25		
Moment of inertia (J)	: 1,34 sq.ft.lb		
Design	: B		

Output	50%	75%	100%	Foundation loads	
Efficiency (%)	89.5	91.0	91.7	Max. traction	: 356 lb
Power Factor	0,66	0,76	0,82	Max. compression	: 526 lb

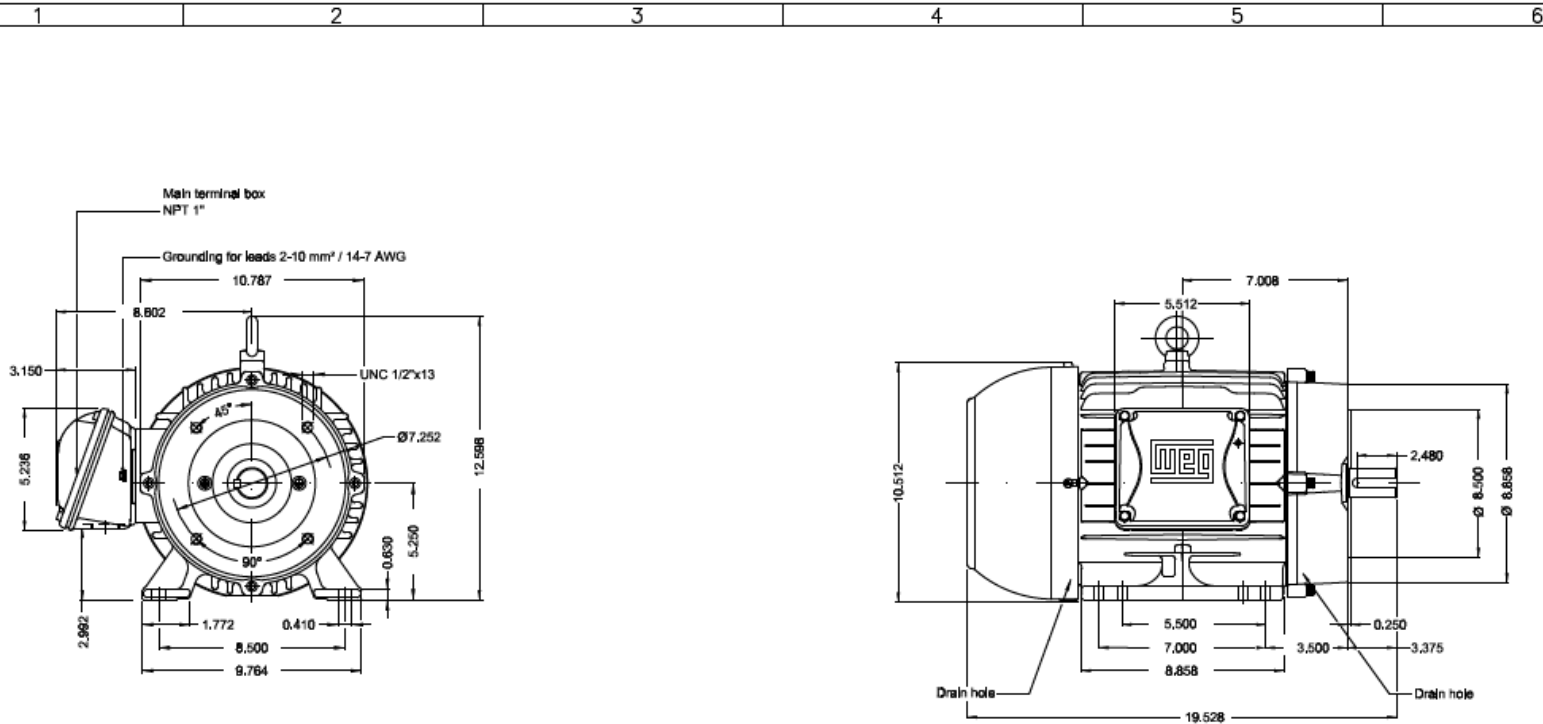
		<u>Drive end</u>	<u>Non drive end</u>
Bearing type	:	6308 ZZ	6207 ZZ
Sealing	:	V'Ring	V'Ring
Lubrication interval	:	-	-
Lubricant amount	:	-	-
Lubricant type	:	Mobil Polyrex EM	

Notes  
 USABLE @208V 19,9A SF 1,15 SFA 22,9A

This revision replaces and cancel the previous one, which must be eliminated.  
 (1) Looking the motor from the shaft end,  
 (2) Measured at 1m and with tolerance of +3dB(A).  
 (3) Approximate weight subject to changes after manufacturing process.  
 (4) At 100% of full load.

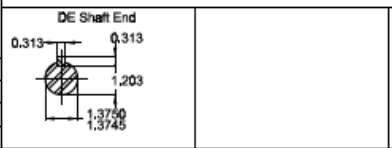
These are average values based on tests with sinusoidal power supply, subject to the tolerances stipulated in NEMA MG-1.

Rev.	Changes Summary	Performed	Checked	Date
Performed by			Page	Revision
Checked by			1 / 1	
Date	08/08/2022			



D										
	7.5 HP 04 Poles 60 Hz									
E										

Bearing cap
Color RAL 5009
Painting plan 207A
Mounting B34R(D)



ECM	LOC	SUMMARY OF MODIFICATIONS	EXECUTED	CHECKED	RELEASED	DATE	VER
EXECUTED	HYBRUSER	THREE PH MOTOR W22 PREM. EFF. FRAME 213/STC IP55 TEFC					
CHECKED							
RELEASED							
REL.DT.	WMO	Jeraguá do Sul	Product Engineering				

PREVIEW  
WDD

SHEET 1 / 1

Dimensions in inches XME\_A3