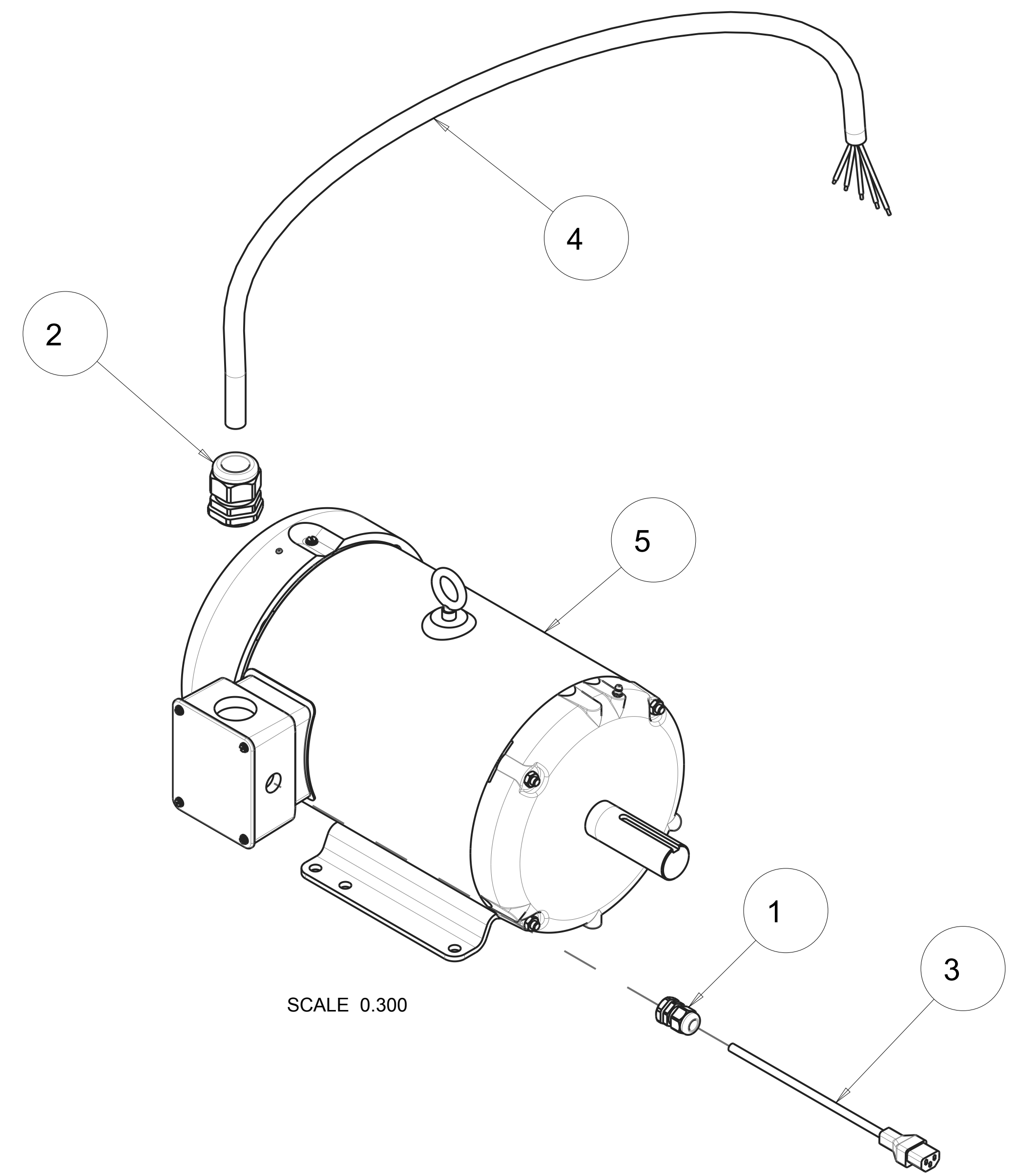
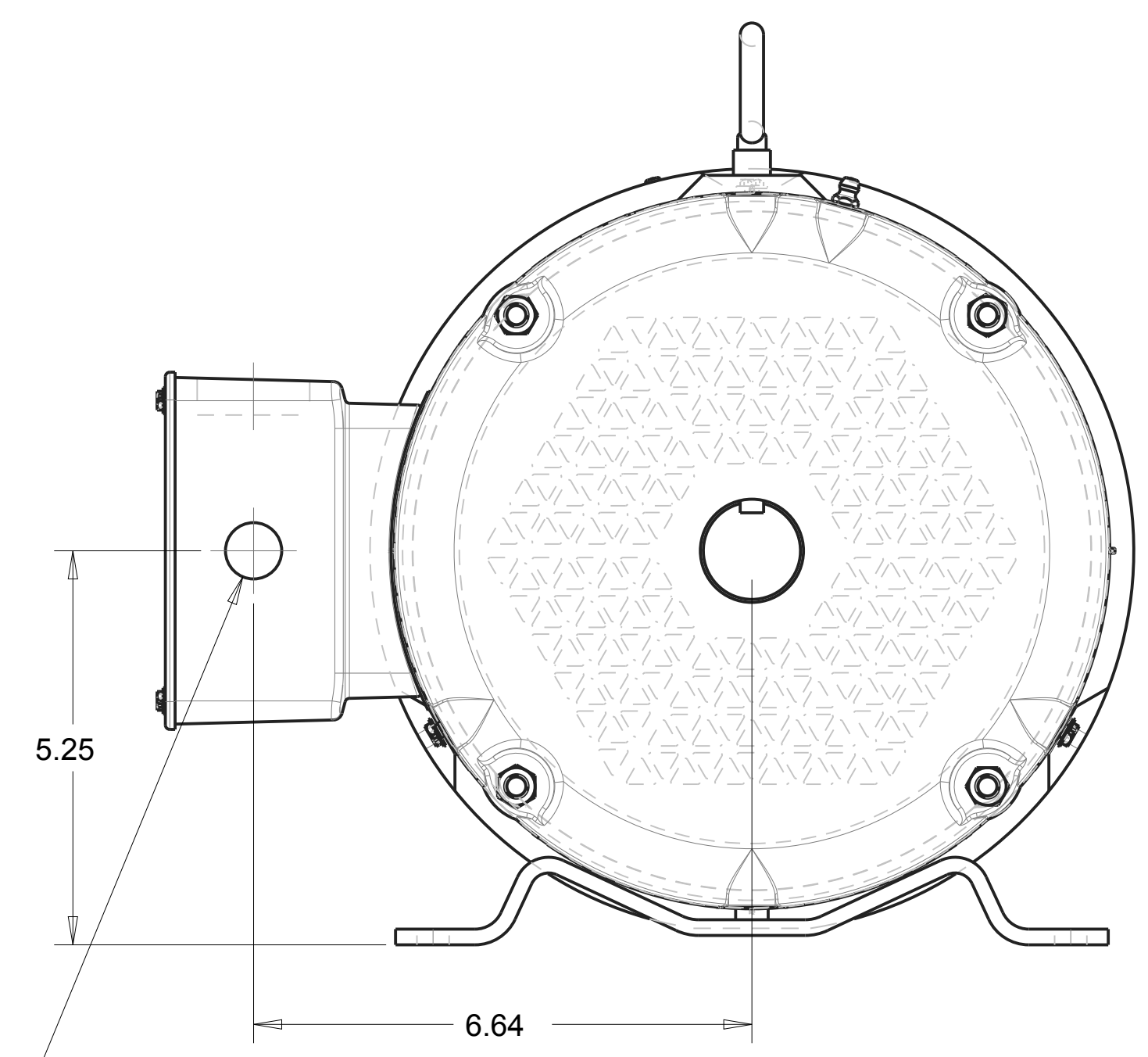
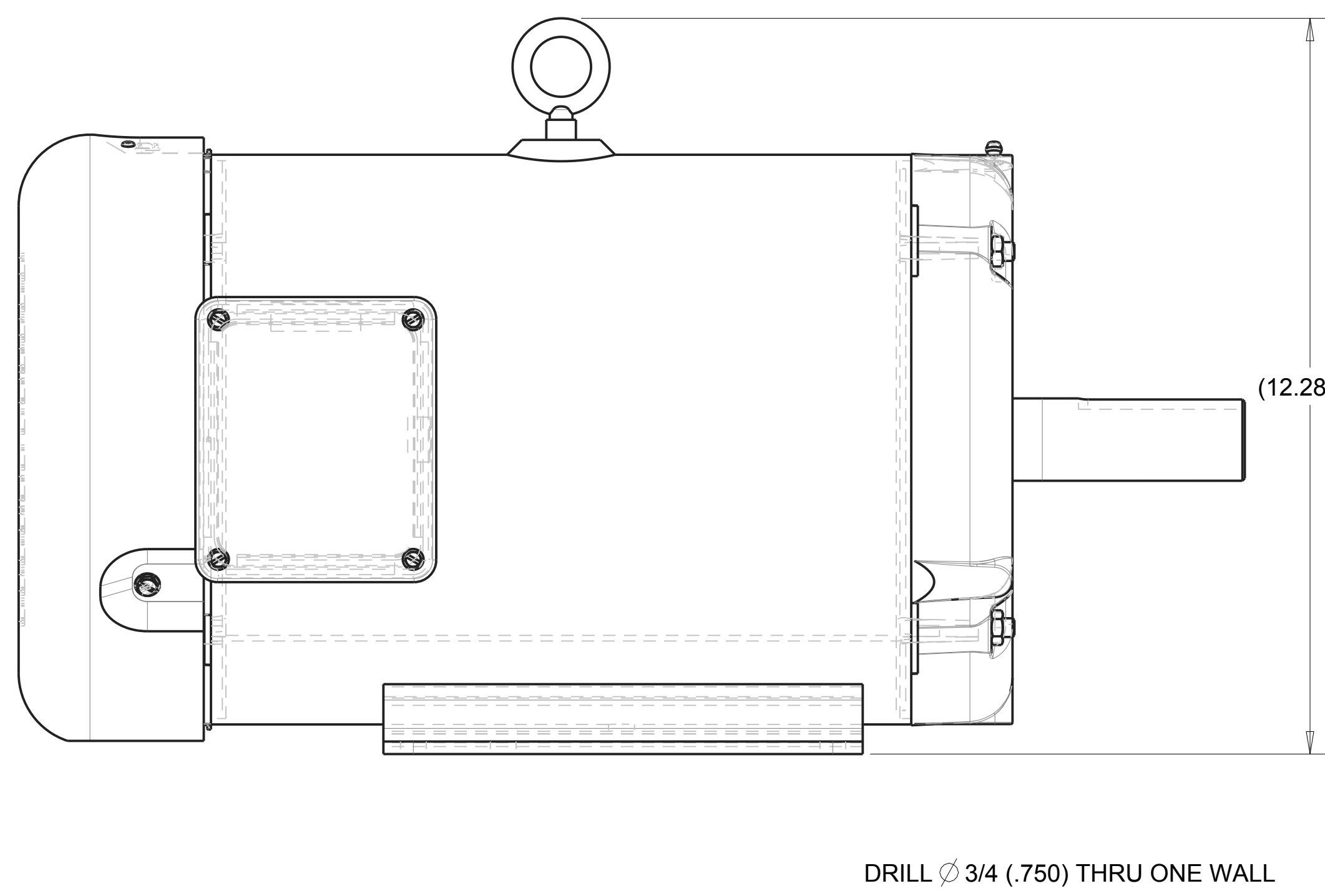
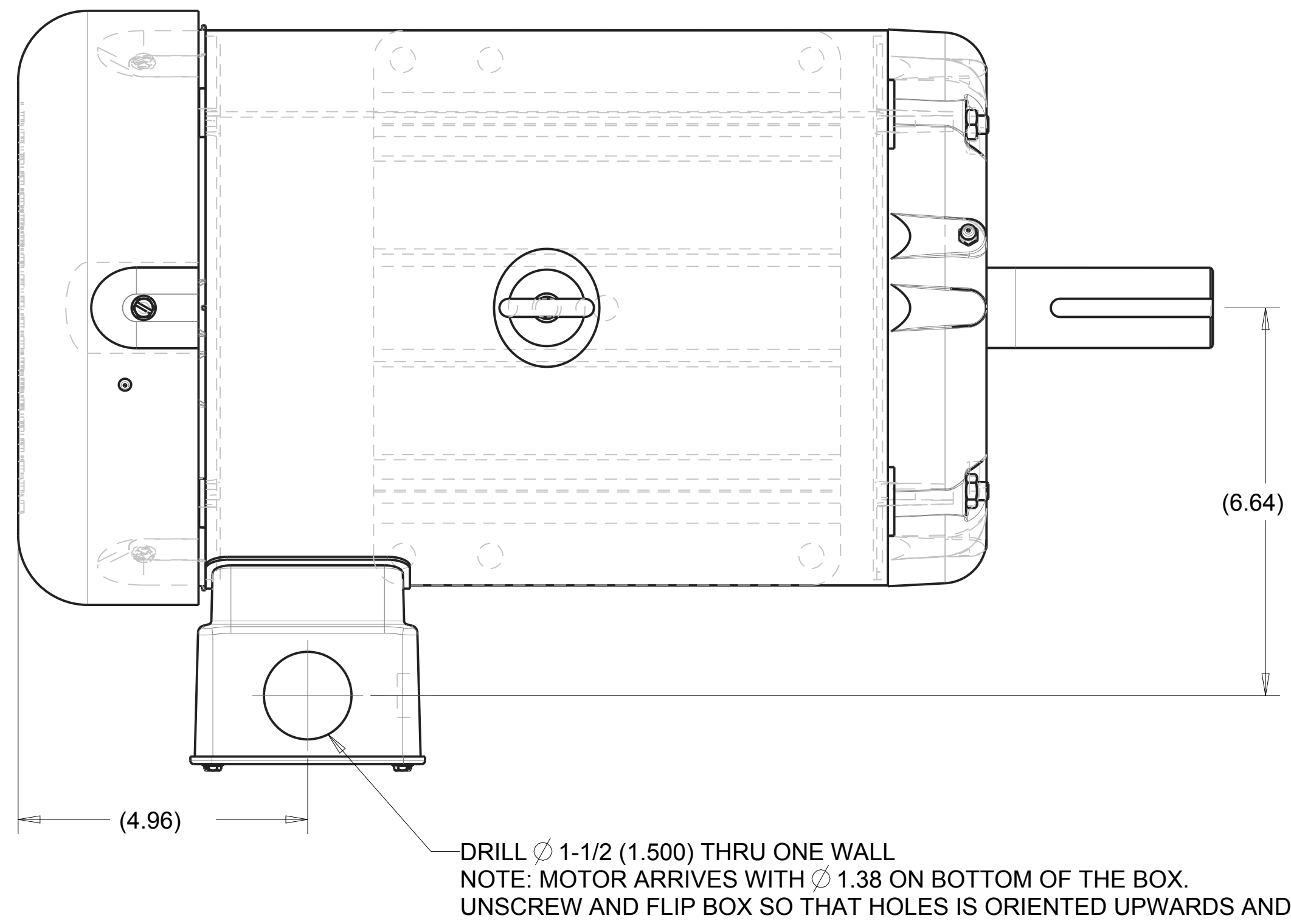


A B C D E F G H I J

NOTES:
1. SEE DRAWING, P/N 172720 PAGE 2, FOR WIRING DIAGRAM.

REVISIONS				
ZONE	REV	DESCRIPTION	DATE	APPROVED
-	-	INITIAL RELEASE, ECO #2390	10/09/18	SSH

MACHINING DETAIL



QTY. REQ.	PART OR IDENTIFYING NO.	DESCRIPTION	ITEM NO.
1	172724	MTR, 10HP 400V/50HZ 3PH 1460RPM, EM3714T-58	5
1	172564_01	CORD, ELEC, 12/5 SOOW BLACK (4.5 FT)	4
1	166279	CORD, 9', W/IEC60320 FEM	3
1	160689	CONNECTOR, CORD, LTF29	2
1	159582	CONNECTOR, CORD, LTF11	1

TOLERANCES UNLESS OTHERWISE SPECIFIED			
DRAWN	CHECK	DESIGN	DATE
SSH	XXX	SSH	10/09/18
SSH	SSH	SSH	10/09/18

WHOLE NO. AND FRACTIONS = 1/16 (EXCEPT DRILL HOLES)
 X = ±.03
 XX = ±.010
 XXX = ±.005
 ANGLES = ±1/2°

PROPRIETARY NOTICE: THIS DRAWING AND INFORMATION IT CONTAINS ARE THE PROPERTY OF MK DIAMOND INC. AND ARE CONSIDERED CONFIDENTIAL AND MAY NOT BE REPRODUCED, COPIED, OR USED IN PART OR IN WHOLE WITHOUT THE WRITTEN CONSENT OF MK DIAMOND PRODUCTS INC.

SCALE: 0.500

APPLICATION

DO NOT SCALE DRAWING

MK MK DIAMOND PRODUCTS INC.
1315 STORM PARKWAY
TORRANCE, CA. 90509

MK-5010T BLK SAW
MTR, 10HP 400V/50HZ 3PH 1460RPM, EM3714T-58 -COMP

SIZE **D** PART NO. 172721 DWG. NO. 172721 REV. -