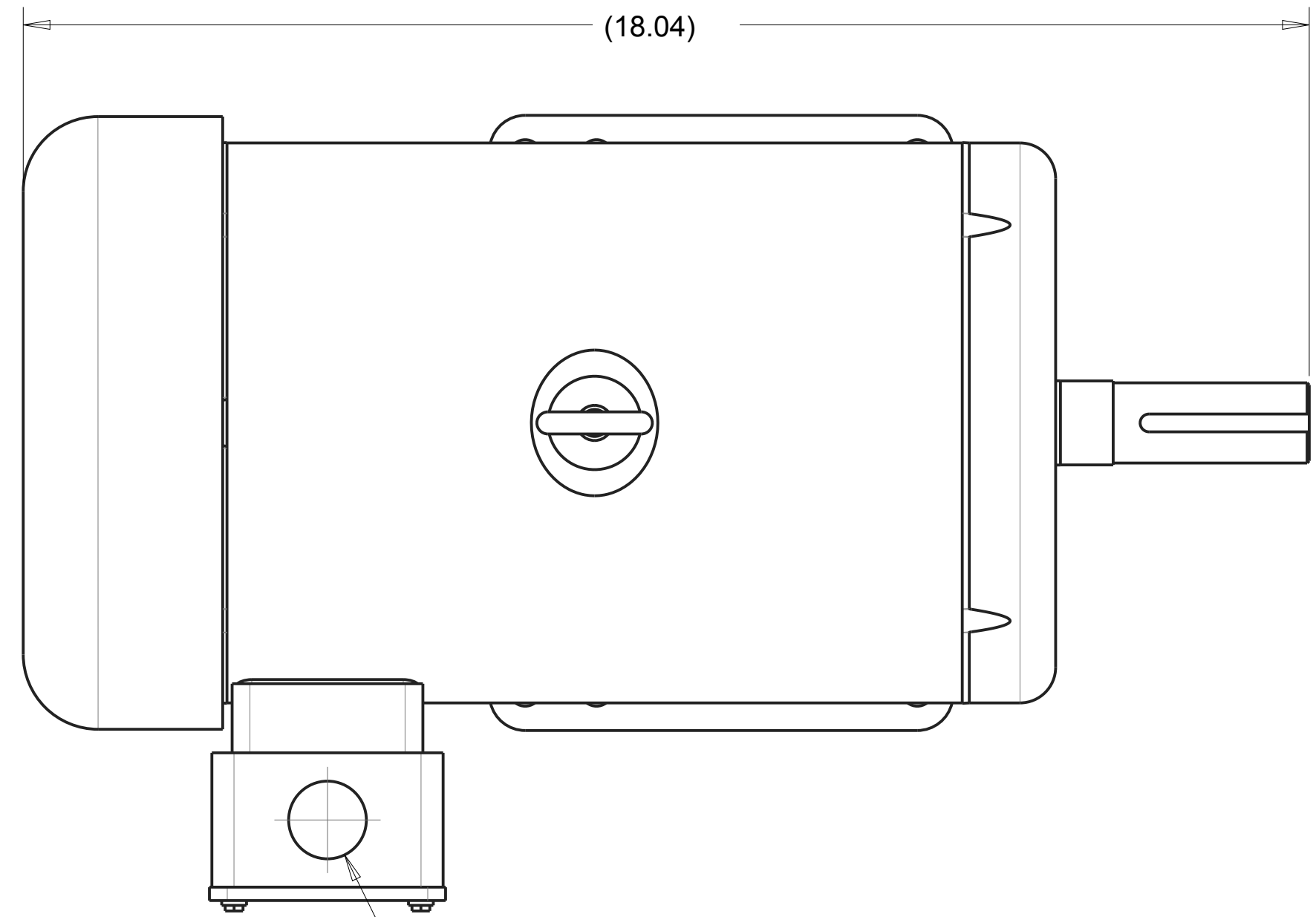
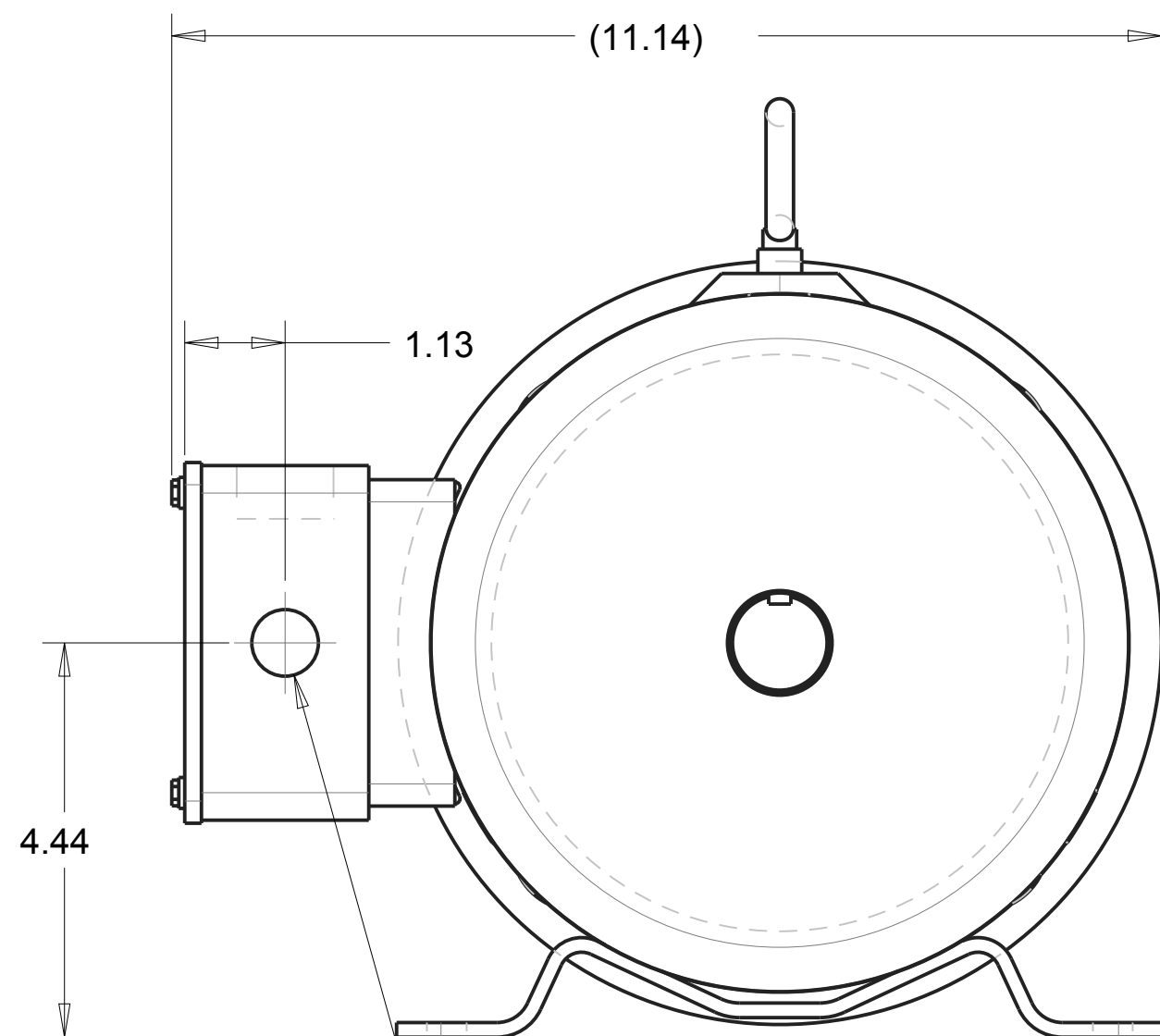
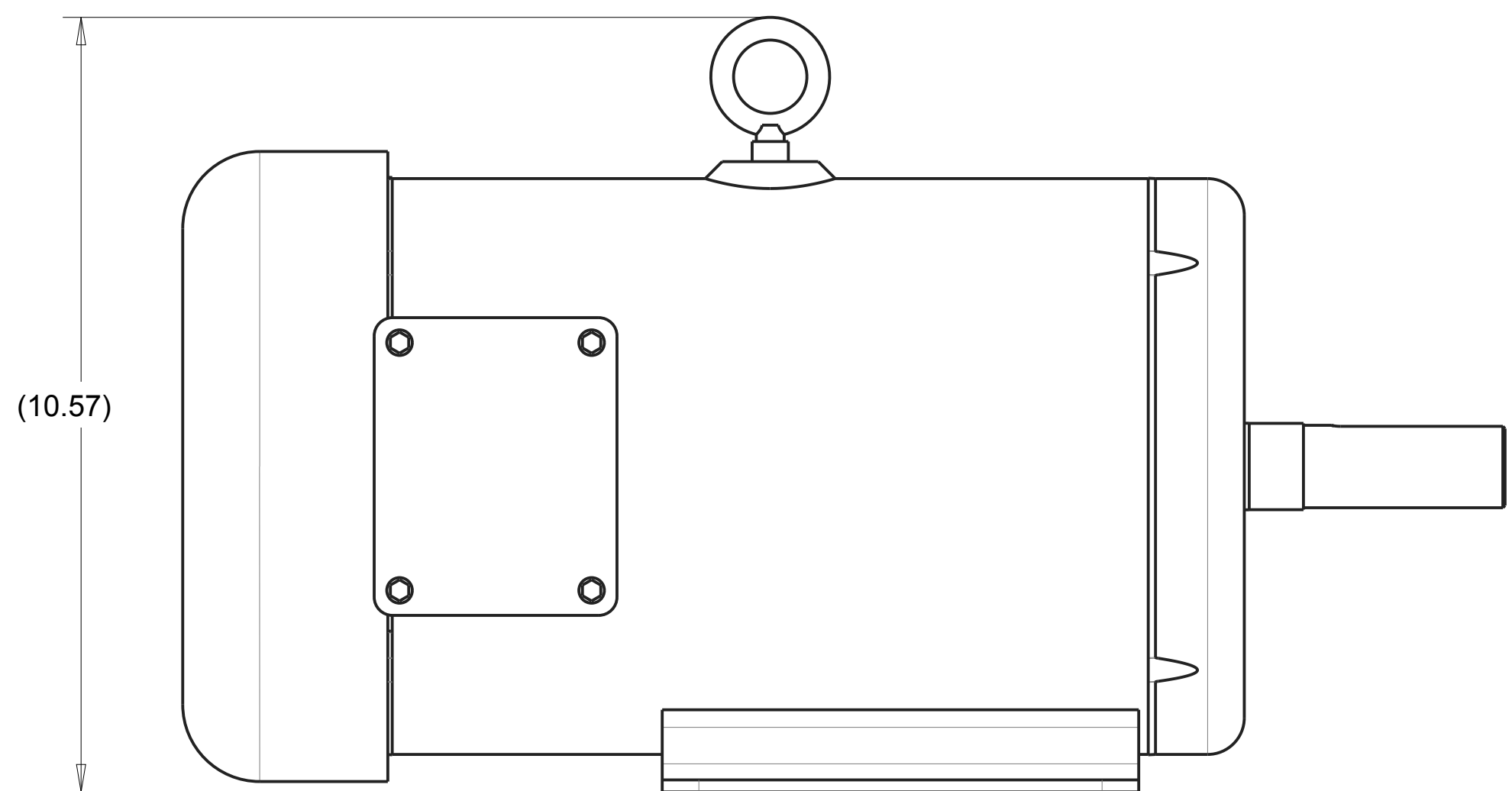


NOTES:  
 1. 230V PUMP IS TO BE USED WITH THIS MOTOR.  
 2. SEE MOTOR ASSEMBLY DRAWING, 172766 FOR WIRING DIAGRAM.  
 3. CAN BE REPLACED WITH 172558-WEG ON JOBS.

MACHINING DETAIL



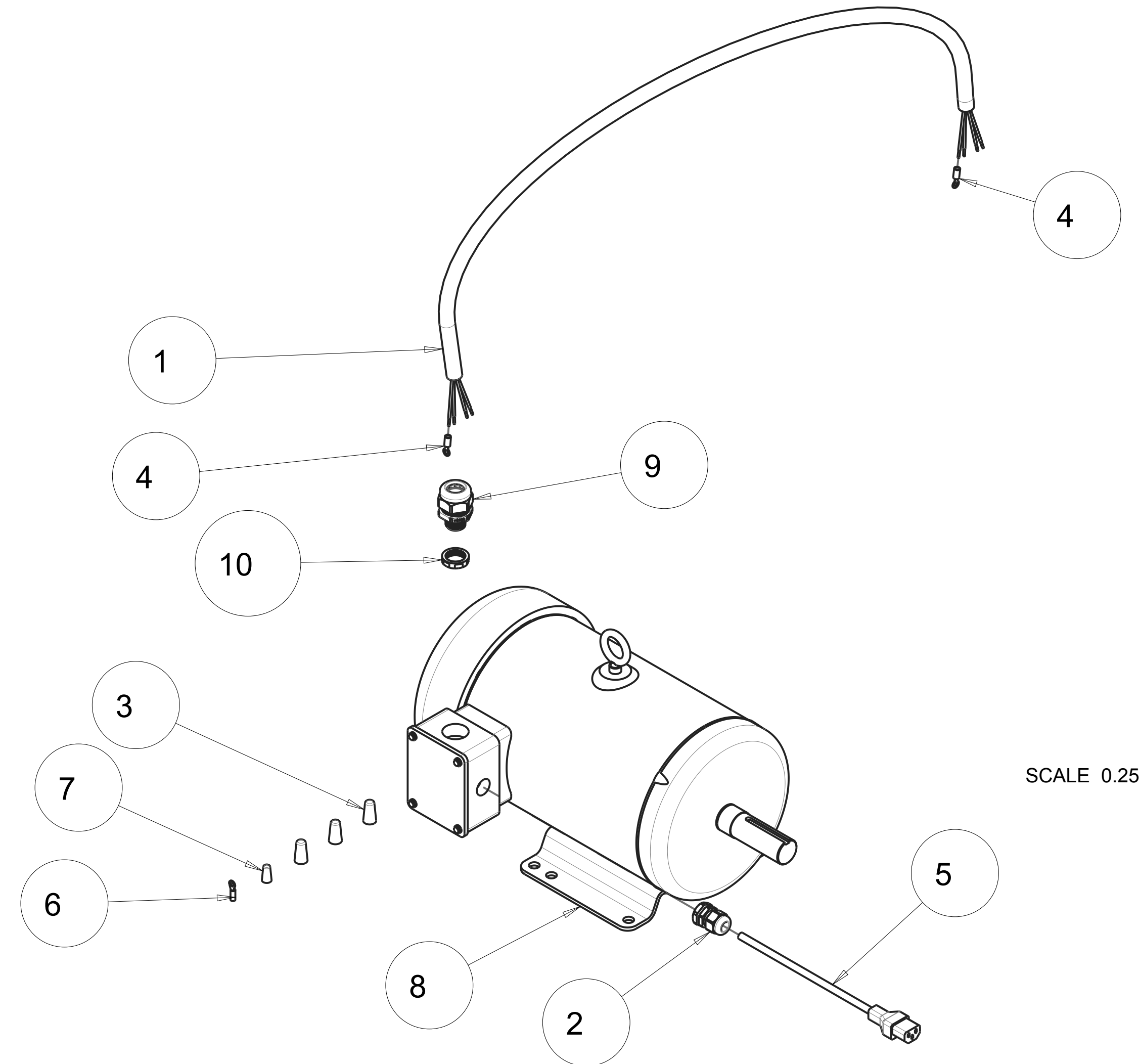
MOTOR ARRIVES WITH (Ø 1.09) HOLE.  
 ORIENT BOX AS SHOWN BEFORE MACHINING/ASSEMBLING.



.750 THRU ONE WALL

REVISIONS				
ZONE	REV	DESCRIPTION	DATE	APPROVED
-	-	INITIAL RELEASE, ECO# 2346	11/21/17	SSH
-	A	REMOVE MACHINING 1-1/8 HOLE & ADD -WEG VERSION, ECO# 2450	09/05/19	SSH
-	B	ADD WIRE NUTS AND TERMINALS, ECO# 2479	03/19/20	SSH

EXPLODE DETAIL



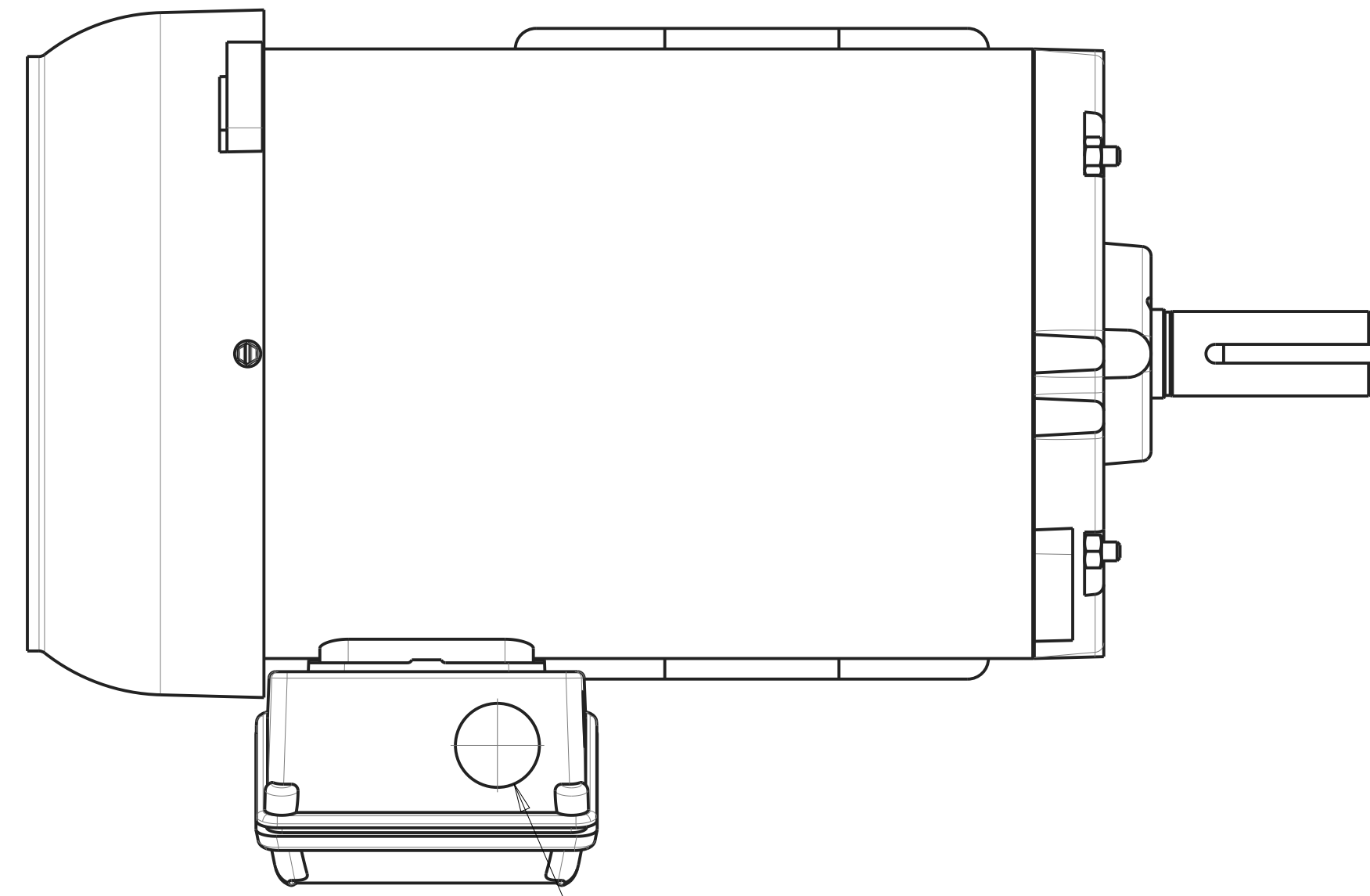
SCALE 0.250

QTY. REQ.	PART OR IDENTIFYING NO.	DESCRIPTION	ITEM NO.
1	172886	NUT, STRN RLF, PLAS, 3/4NPT	10
1	172738	CONNECTOR, CORD, LTF 3/4	9
1	172424	MTR, 5HP 230/460V 3PH 1725RPM, EM3615T	8
1	170637	WIRE NUT 4#16 (ORANGE)	7
1	169294	TERMINAL, 22-18 X #10 RING PI	6
1	166279	CORD, 9', W/IEC60320 FEM	5
2	165108	TERMINAL, 12-10 X #10 RING PI	4
3	159968	WIRE NUT 4#16 (YELLOW)	3
1	159582	CONNECTOR, CORD, LTF11	2
1	151304_02	CORD, ELEC, 12/4 SEOWW, BLACK (4.5 FT)	1

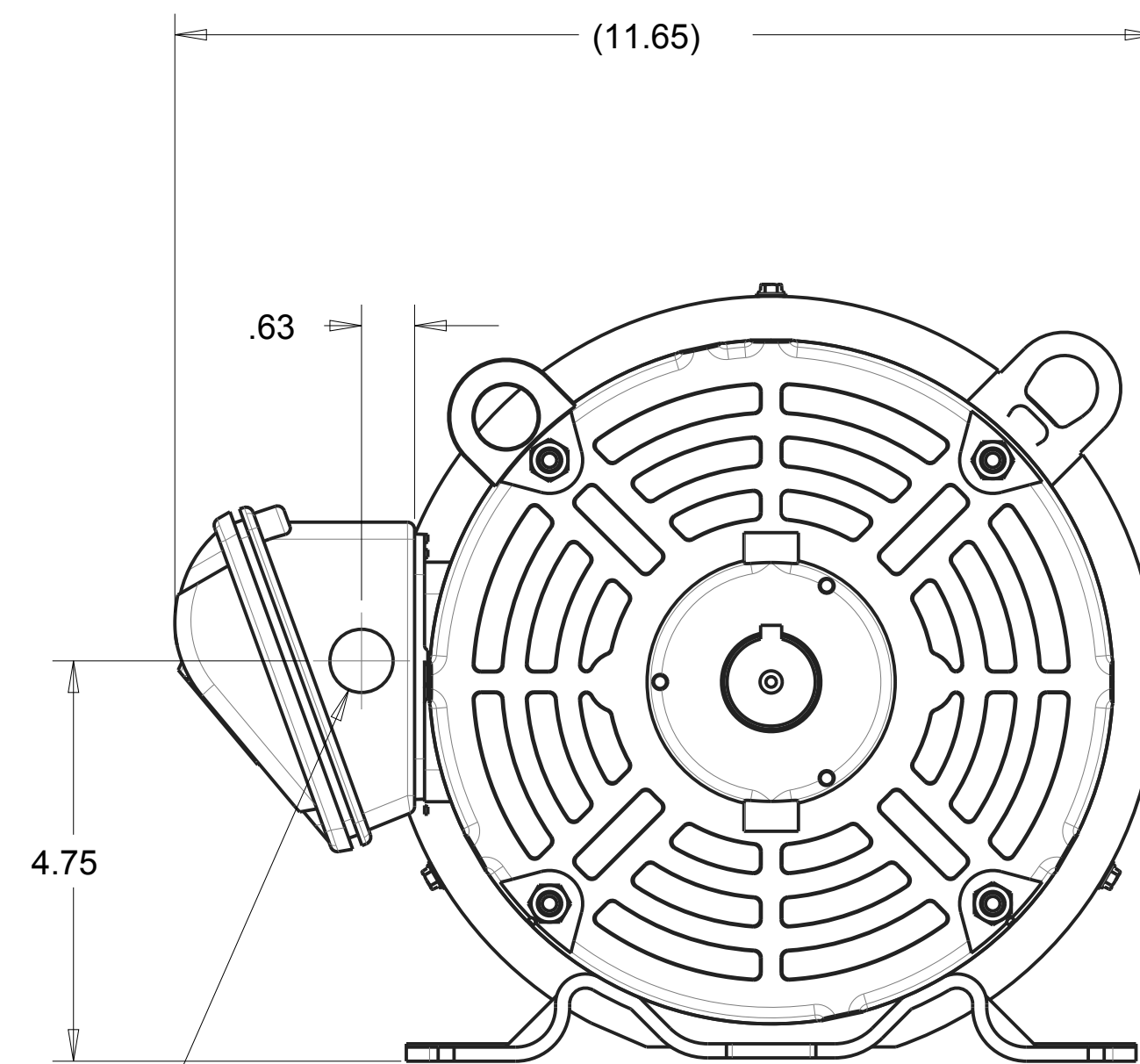
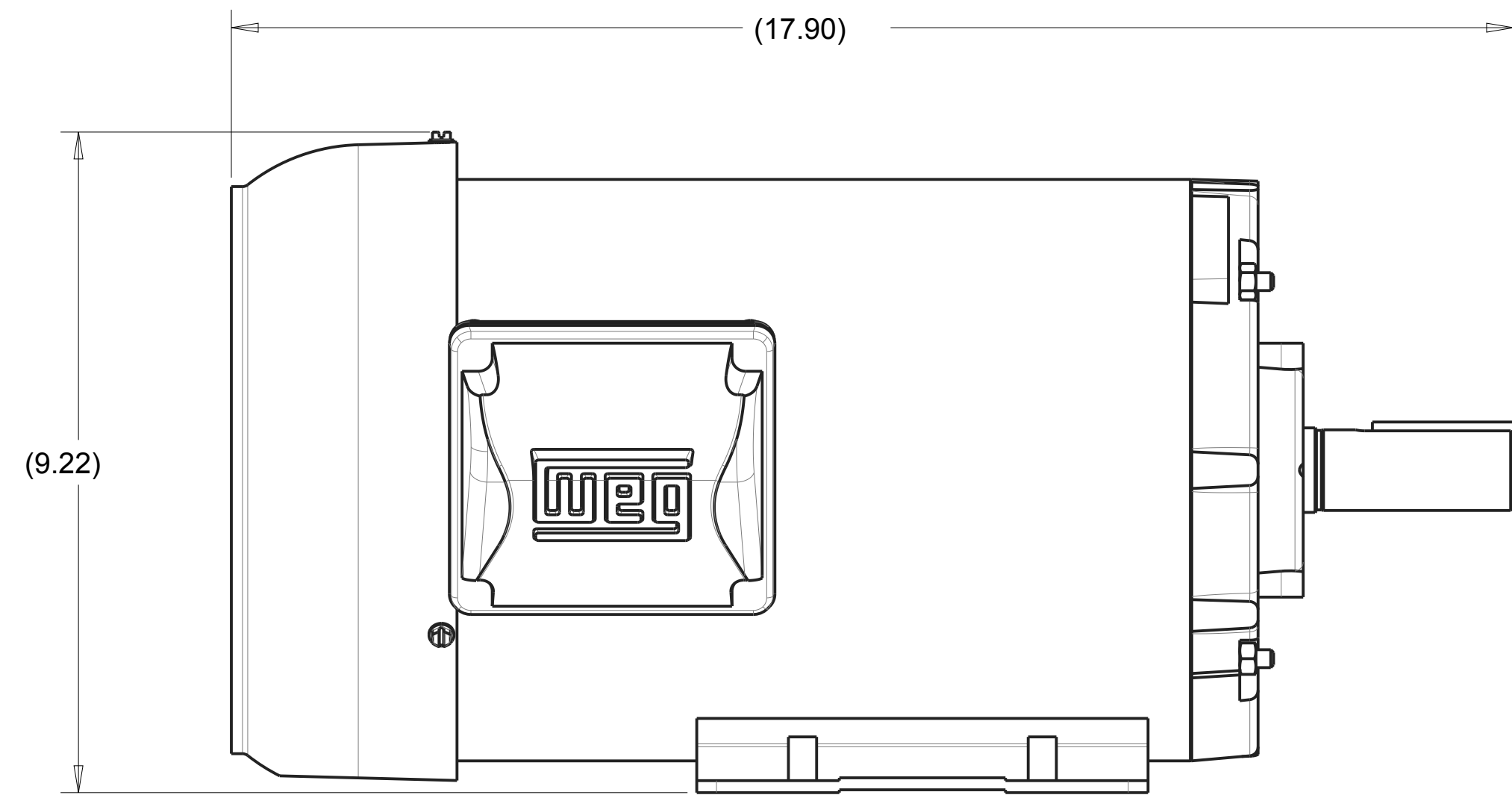
TOLERANCES UNLESS OTHERWISE SPECIFIED				PARTS LIST	
DRAWN		SSH	DATE	11/21/17	
CHECK		SMH	DATE	12/18/17	
DESIGN		SSH	DATE	11/21/17	
NEXT ASSY.					
-					
PROPRIETARY NOTICE: THIS DRAWING AND INFORMATION IT CONTAINS ARE THE PROPERTY OF MK DIAMOND INC. AND ARE CONSIDERED CONFIDENTIAL AND MAY NOT BE REPRODUCED, COPIED, OR USED IN PART OR IN WHOLE WITHOUT THE WRITTEN CONSENT OF MK DIAMOND PRODUCTS INC.					
DIMENSIONS ARE IN INCHES WHOLE NO. AND FRACTIONS = 1/16 (EXCEPT DRILL HOLES) X = ±.03 XX = ±.010 XXX = ±.005 ANGLES = ±1/2°		MK DIAMOND PRODUCTS INC. 1315 STORM PARKWAY TORRANCE, CA. 90509		<b>MK-5000 BLOCK SAW</b> MTR, 5HP 230/460V 3PH 1725RPM, EM3615T -COMP	
SIZE	PART NO.	DWG. NO.	REV.		
D	172558	172558	B		
DO NOT SCALE DRAWING		APPLICATION		SCALE: 0.500	SHEET: 1 of 2

- NOTES:  
 1. 230V PUMP IS TO BE USED WITH THIS MOTOR.  
 2. SEE MOTOR ASSEMBLY DRAWING, 172766, FOR WIRING DIAGRAM.  
 3. NOT ON BOMS. CAN BE USED TO REPLACE 172558 ON JOBS.

MACHINING DETAIL

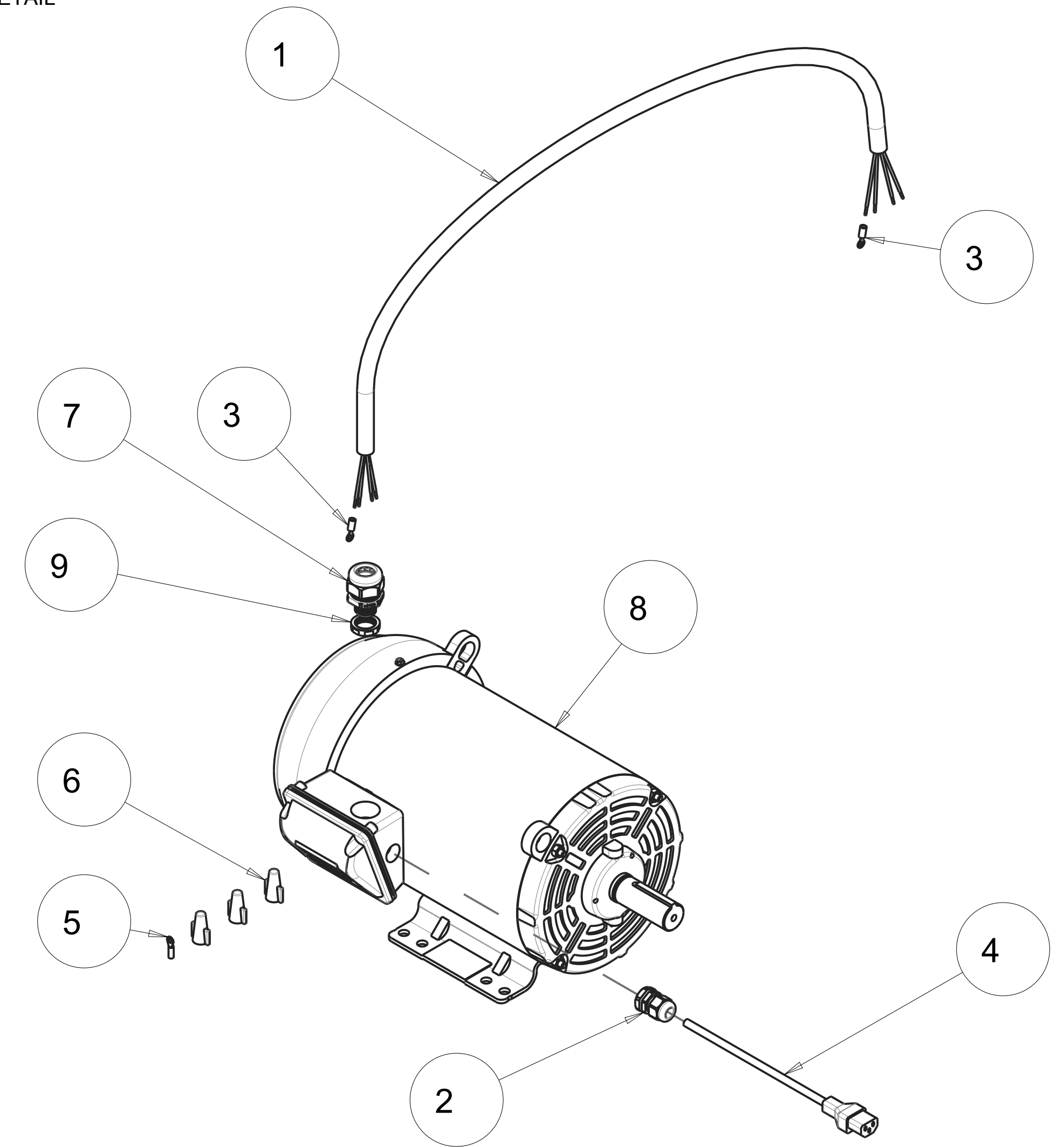


MOTOR ARRIVES WITH (Ø 1.118) HOLE.  
 ORIENT BOX AS SHOWN BEFORE MACHINING.




Ø .750 THRU ONE WALL

EXPLODE DETAIL



SCALE 0.250

QTY. REQ.	PART OR IDENTIFYING NO.	DESCRIPTION	ITEM NO.
1	172886	NUT, STRN RLF, PLAS, 3/4NPT	9
1	172775	MTR, 5HP 230/460V 3PH 1725RPM WEG 00518ET3E184T-S	8
1	172738	CONNECTOR, CORD, LTF 3/4	7
3	172202	WIRE NUT, 4#10 (RED)	6
1	169294	TERMINAL, 22-18 X #10 RING PI	5
1	166279	CORD, 9', W/IEC60320 FEM	4
2	165108	TERMINAL, 12-10 X #10 RING PI	3
1	159582	CONNECTOR, CORD, LTF11	2
1	151304_05	CORD, ELEC, 12/4 SEOWW, BLACK (4.5 FT)	1

TOLERANCES UNLESS OTHERWISE SPECIFIED		DATE		 <b>MK DIAMOND PRODUCTS INC.</b> 1315 STORM PARKWAY TORRANCE, CA. 90509
DIMENSIONS ARE IN INCHES		DRAWN		
WHOLE NO. AND FRACTIONS = 1/16 (EXCEPT DRILL HOLES)		CHECK		
X = ± .03		DESIGN		
XX = ± .010		NEXT ASSY.		<b>MK-5005T BLOCK SAW</b> MTR, 5HP 230/460V 3PH 1725RPM, WEG -COMP
XXX = ± .005		<small>PROPRIETARY NOTICE: THIS DRAWING AND INFORMATION IT CONTAINS ARE THE PROPERTY OF MK DIAMOND INC. AND ARE CONSIDERED CONFIDENTIAL AND MAY NOT BE REPRODUCED, COPIED, OR USED IN PART OR IN WHOLE WITHOUT THE WRITTEN CONSENT OF MK DIAMOND PRODUCTS INC.</small>		
ANGLES = ± 1/2°		SIZE	REV.	
DO NOT SCALE DRAWING		APPLICATION		PART NO. <b>172558-WEG</b> DWG. NO. <b>172558-WEG</b> SCALE: 1:000