

MK Diamond Products, Inc.
 1315 Storm Parkway
 Torrance, CA 90509-2803

SPECIFICATION SHEET			Date 11/06/15
MK Part Number 171256	MK Description MTR, 1HP 220V 50HZ	Revision -	
Manufacturer P/N 35L593T980G1	Manufacturer Description 1HP,1425RPM,1PH,50HZ,143TC,3528LC,TEFC,F		
Manufacturer Information BALDOR	Vendor Information 002520 POWER REPS, INC.	Alternate Manufacturer -	
Specifications: <div style="text-align: center; font-size: 1.2em; margin-top: 10px;">SEE ATTACHED PAGES</div>			
Rev	Description	Date	Approved
-	INITIAL RELEASE, ECO# 2218	11/06/15	SMH



BALDOR® • RELIANCE

**Product Information Packet
MK DIAMOND PRODUCTS**

35L593T980G1

1HP,1425RPM,1PH,50HZ,143TC,3528LC,TEFC,F

Part Detail							
Revision:	-	Status:	PRD/A	Change #:		Proprietary:	Yes
Type:	AC	Prod. Type:	3528LC	Elec. Spec:	35WGT980	CD Diagram:	CD0320
Enclosure:	TEFC	Mfg Plant:		Mech. Spec:	35L593	Layout:	35LYL593
Frame:	143TC	Mounting:	F1	Poles:	04	Created Date:	06-25-2015
Base:	N	Rotation:	R	Insulation:	F	Eff. Date:	06-26-2015
Leads:	6#18,1#14 #4TH					Replaced By:	
Literature:		Elec. Diagram:					

Nameplate NP1257L							
CAT.NO.	171256						
SPEC.	35L593T980G1						
HP	1						
VOLTS	115/230						
AMP	11.2/5.6						
RPM	1425						
FRAME	143TC	HZ	50	PH	1		
SER.F.	1.15	CODE	J	DES	L	CL	F
NEMA-NOM-EFF		PF					
RATING	40C AMB-CONT						
CC		USABLE AT 208V					
DE	6205	ODE	6203				
ENCL	TEFC	SN					

AC Induction Motor Performance Data
Record # 51606 - Typical performance - not guaranteed values

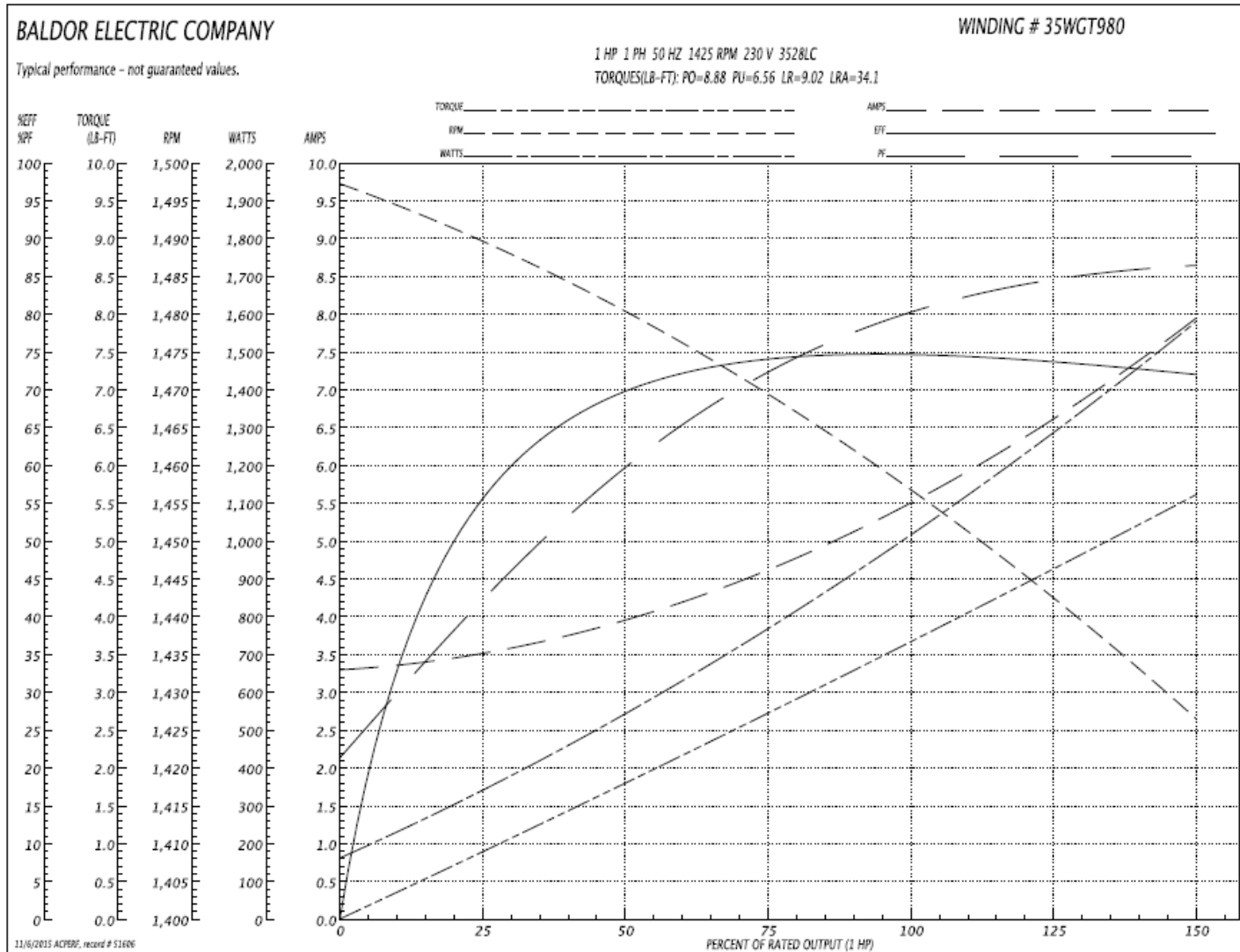
Winding: 35WGT980-R006	Type: 3528LC	Enclosure: TEFC
-------------------------------	---------------------	------------------------

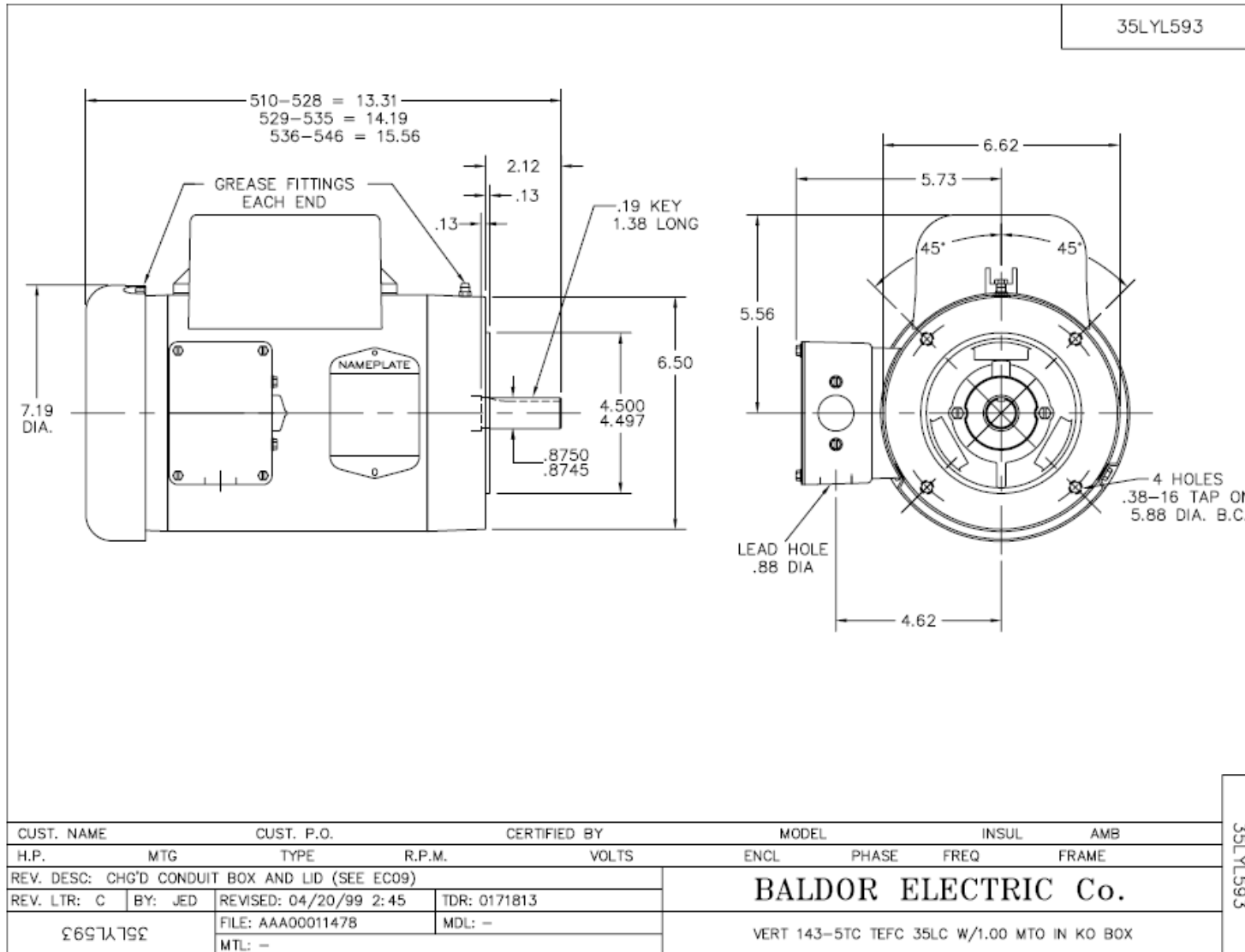
Nameplate Data				230 V, 50 Hz: High Voltage Connection	
Rated Output (HP)	1			Full Load Torque	3.72 LB-FT
Volts	115/230			Start Configuration	direct on line
Full Load Amps	11.2/5.6			Breakdown Torque	8.88 LB-FT
R.P.M.	1425			Pull-up Torque	6.56 LB-FT
Hz	50	Phase	1	Locked-rotor Torque	9.02 LB-FT
NEMA Design Code	L	KVA Code	J	Starting Current	34.1 A
Service Factor (S.F.)	1.15			No-load Current	3.32 A
NEMA Nom. Eff.	0	Power Factor	0	Line-line Res. @ 25°C	2.6535 Ω A Ph 1.8996 Ω B Ph
Rating - Duty	40C AMB-CONT			Temp. Rise @ Rated Load	64°C
S.F. Amps				Temp. Rise @ S.F. Load	75°C

Load Characteristics 230 V, 50 Hz, 1 HP

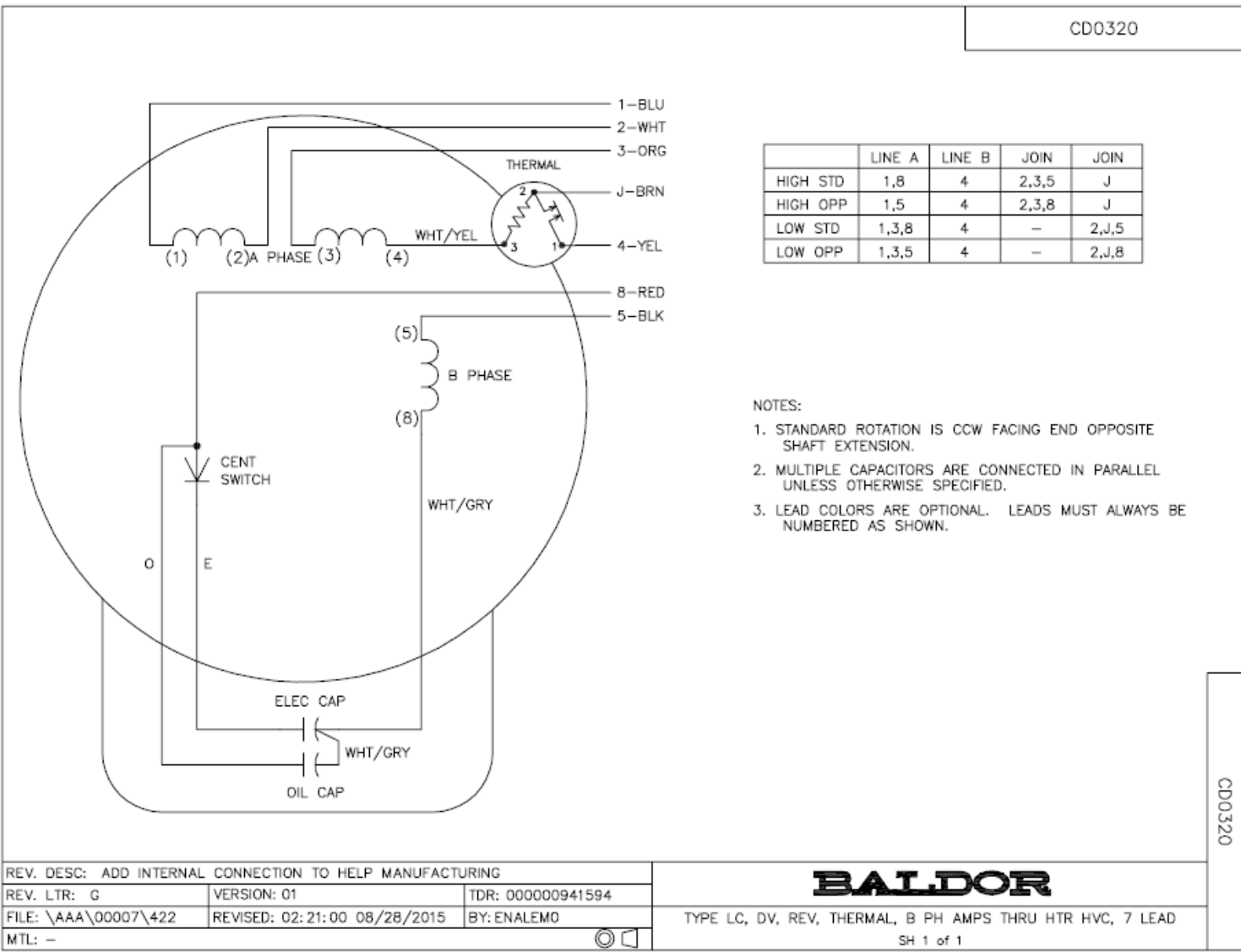
% of Rated Load	25	50	75	100	125	150	S.F.
Power Factor	43	61	73	80	84	87	82
Efficiency	56.2	68	75.6	74.8	73.7	72	74.1
Speed	1489.2	1479.2	1468.7	1456.5	1442.9	1426	1448
Line amperes	3.5	3.96	4.66	5.6	6.65	7.92	6.23

Performance Graph at 230V, 50Hz, 1.0HP Typical performance - Not guaranteed values





CD0320



CD0320

REV. DESC: ADD INTERNAL CONNECTION TO HELP MANUFACTURING		
REV. LTR: G	VERSION: 01	TDR: 00000941594
FILE: \AAA\00007\422	REVISED: 02: 21: 00 08/28/2015	BY: ENALEMO
MTL: -		

BALDOR

TYPE LC, DV, REV, THERMAL, B PH AMPS THRU HTR HVC, 7 LEAD

SH 1 of 1