


MK Diamond Products, Inc.
 1315 Storm Parkway
 Torrance, CA 90509-2803

SPECIFICATION SHEET			Date 02/25/15
MK Part Number 171179	MK Description MTR, 1-1/2HP 115V 60HZ 1725RPM	Revision -	
Manufacturer P/N 113938.00	Manufacturer/Vendor Description MODEL M6K17FB39F, AC MOTOR 1-1/2HP 1725RPM 56H TEFC 115/208-230V 1PH 60HZ		
Manufacturer Information LEESON ELECTRIC CORP GRAFTON, WI	Vendor Information SIERRA INDUSTRIAL ENGINEERING COMMERCE, CA	Alternate Manufacturer NONE	
Specifications:			
SEE FOLLOWING PAGES			
			
<u>Service Parts</u> 172168 CAPACITOR, RUN, F/171179 MOTOR 172169 CAPACITOR, START, F/171179 MOTOR			
Rev	Description	Date	Approved
-	INITIAL RELEASE, ECO# 2197	02/25/15	SMH

Product Features

List Price : \$ 857

[Contact Sales Office](#)

Catalog No 113938.00	Model M6K17FB39F
Product type AC MOTOR	Stock Stock
Description ..1 1/2HP..1725RPM.56H.TEFC.115/208-230V.1PH.60HZ.CONT.40C.1.15SF.RIGID.M6K17FB39F.....AG - FARM DUTY/GENERAL PURPOSE.MANUAL.....	

Information shown is for current motor's design

[View Outline](#) | [View Connection](#)

Engineering Data

Volts 115	Volts 208-230	Volts
F.L. Amps 17.2	F.L. Amps 8.8-8.6	F.L. Amps
S. F Amps 19	S. F Amps 9.8-9.5	S. F Amps
RPM 1800	Hertz 60	
HP 1.5	Duty CONTINUOUS	TYPE KF
KW 1.12		
Frame 56HZ	Serv. Factor 1.15	Phase 1
Max Amb 40	Design L	Code J
Insul Class F	Protection MANUAL	Therm.Prot. CED2705
Eff 100% 79	Eff 76%	PF 73
UL Yes	CSA Yes	Bearing OPE 6203
CC Number	CE No	Bearing PE 6205
Load Type	Inverter Type	Speed Range NONE
Motor Wt. 42 LB	Enclosure TEFC	Lubrication POLYREX EM
Nameplate 993500	Mounting RIGID	Rotation SELECTIVE CCW
Assembly 042540	Shaft Dia. 7/8 IN	Ext. Diag. 005053.02
Cust Part No	Outline 028769-7508	Ext. Diag2
Packaging B		Winding K634278
Carton Label Leeson Farm Duty		GROUP: 3
Ins	Paint RED (ENAMEL)	Test Card 02
Form Factor	RMS Amps	Const Torque Speed Range
Torque	Peak	
AB Code	Peak@DegC	
Resistance		
Connection		

Rework Status	Rework TYPE
---------------	-------------

Hazardous Loc NONE	Temp Op Code	Brake Motors
Explosion Proof	GROUP:	FORCE
Class	GROUP:	VDC
Class	GROUP:	ADC
		Brake Coll OHMc @25 C

Performance

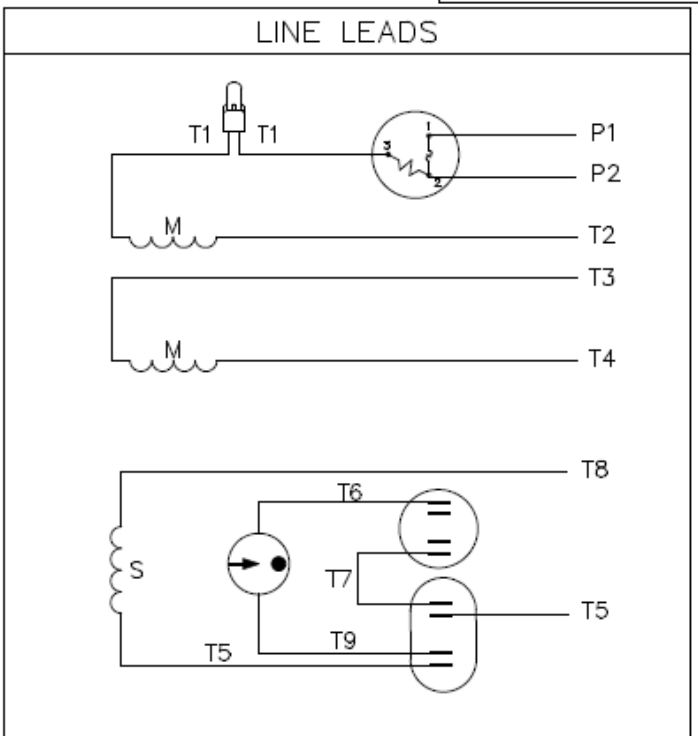
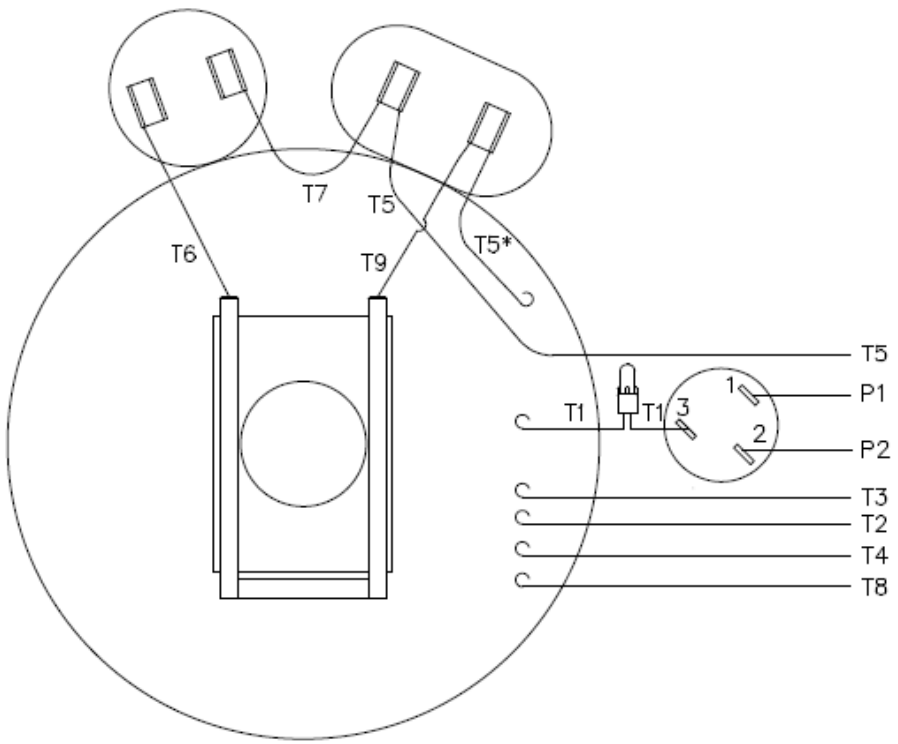
Torque UOM	LB-FT	Inertia (WK ²)	.14 LB-FT^2
Torque	10.8(Break Down)	9.3(Pull Up)	13(Locked Rotor)
CURRENT (amps)	21.4(Break Down)	0(Pull Up)	51(Locked Rotor)
Efficiency (%)	78.7(75% Load)	75.8(50% Load)	65.3(25% Load)
PowerFactor	65.8(75% Load)	53.2(50% Load)	35.8(25% Load)

Load Curve Data @60 Hz, 230 Volts, 1.5 Horsepower

Load	Amps	KW	RPM	Torque	EFF	PF	Rise By Rele	Frame Rise
0.0	5.2	0.24	1798	0.0	0.0	20.1	0.0	-
0.25	5.49	0.452	1790	1.16	65.3	35.8	0.0	-
0.5	6.13	0.75	1779	2.25	75.8	53.2	0.0	-
0.75	7.03	1.064	1770	3.33	78.7	65.8	0.0	-
1.0	8.4	1.414	1758	4.48	79.1	73.2	84.0	48.0
1.25	9.78	1.767	1746	5.63	79.0	78.6	0.0	-
1.5	11.69	2.181	1729	6.81	76.7	81.1	0.0	-

SOURCE: CALCULATED GROUP: 3

VIEW FROM OUTSIDE OF MOTOR AT SWITCH END.

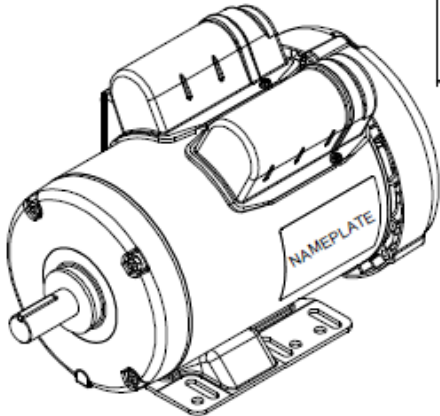
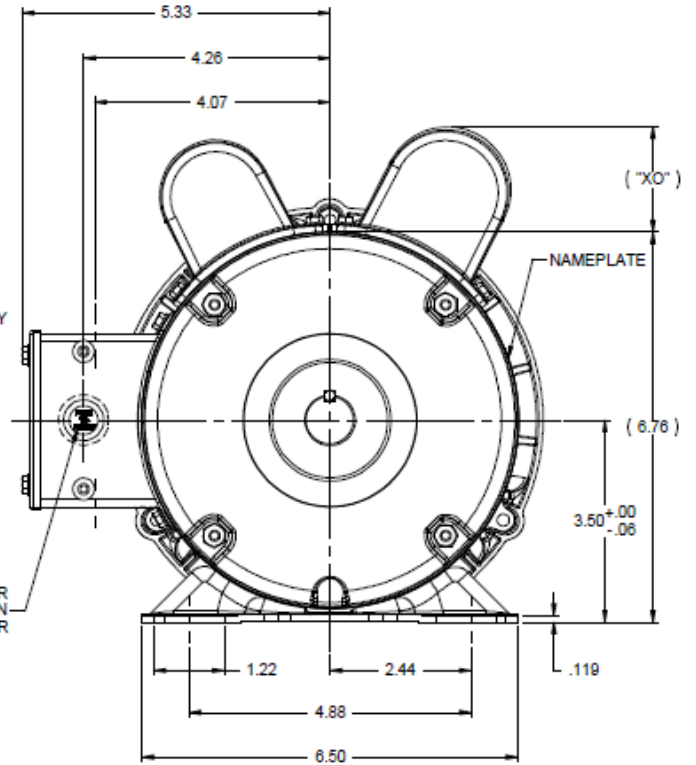
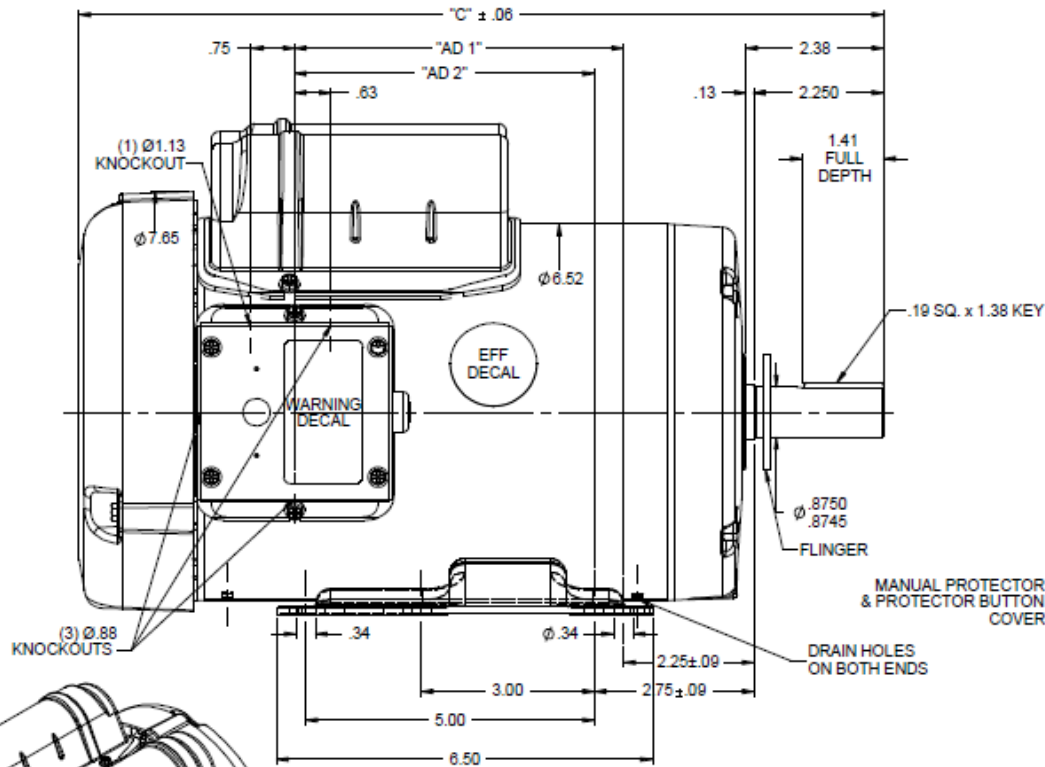


	ROTATION FACING LEAD END	L1	L2	JOIN	INSULATE SEPARATELY
HIGH VOLT	C.C.W.	P1	T4 T5	T2, T3 T8	P2
	C.W.	P1	T4 T8	T2, T3 T5	P2
LOW VOLT	C.C.W.	P1	T2, T4 T5	P2, T3 T8	-----
	C.W.	P1	T2, T4 T8	P2, T3 T5	-----

* THIS LEAD MAY BE WHITE

		TOLERANCES UNLESS SPECIFIED		REGAL-BELOIT <i>Motor Technologies Group</i>		DRAWN ADH 06/16/76			
		DEC.	INCHES			CHK WRK 06/30/76			
		.X	±.1	TITLE EXTERNAL WIRING DIAGRAM TYPE "K" W/PROTECTOR		APPD			
04	ADDED "*" TO T5	RLW	7/22/02			.XX	±.01	SCALE 1=1	
03	REDRAWN ON CAD	DBT	05/27/97			.XXXX	±.0005	REF	
NO.	REVISION	BY & DATE	CHK	ANG	±1/2'	FINISH			
THIS DRAWING IN DESIGN AND DETAIL IS OUR PROPERTY AND MUST NOT BE USED EXCEPT IN CONNECTION WITH OUR WORK ALL RIGHTS OF DESIGN AND INVENTION ARE RESERVED THIS IS AN ELECTRONICALLY GENERATED DOCUMENT - DO NOT SCALE THIS PRINT				RFP	CAD FILE	00505302	SIZE	DRAWING NO.	REV.
				DIST			A	005053-02	04

RSC PROPRIETARY AND CONFIDENTIAL INFORMATION
 This document is the property of RSCAL BELLOTT CORPORATION ("RSC") including
 its subsidiaries and divisions and contains proprietary information of RSC. This document
 is loaned to the licensee on the express condition that neither it nor the information contained therein shall
 be disclosed to others without the express written consent of RSC, and that the information
 shall be used by the licensee only as approved expressly by RSC. This document shall be
 returned to RSC upon request. This document may be subject to certain restrictions
 under U.S. export control laws and regulations.



DASH NO.	"C"	"AD 1"	"AD 2"	CAP DASH	"XO"
700	12.93	4.69	4.19	A	1.15
750	13.43	5.19	4.69	B	1.60
800	13.93	5.69	5.19	C	1.82

FARM DUTY MOTOR
 NOTES:
 1) FLINGER ON SHAFT
 2) GASKETS THROUGHOUT

TOLERANCES UNLESS SPECIFIED		LEESON ELECTRIC MOTORS GEARMOTORS AND DRIVES	DRAWN KMM 07/10/07
DEC	INCHES		
X	±.1	APPR	
XX	±.03	SCALE	1:2
XXX	±.005	TITLE	OUTLINE - 56HZ/140T FRAME
XXXX	±.0005	MATL	TEFC - RIGID
01	ADDED 140 BASE DIMS	VS	11/8/2011
NO	REVISION	CHK	ANG ±1/2°
		FINISH	PREV
	THIRD ANGLE PROJECTION	SIZE	DRAWING NO
		NETWORK FILE NAME	028769
		SIZE	B
		DRAWING NO	028769
		REV	01