

MK Diamond Products, Inc.
 1315 Storm Parkway
 Torrance, CA 90509-2803

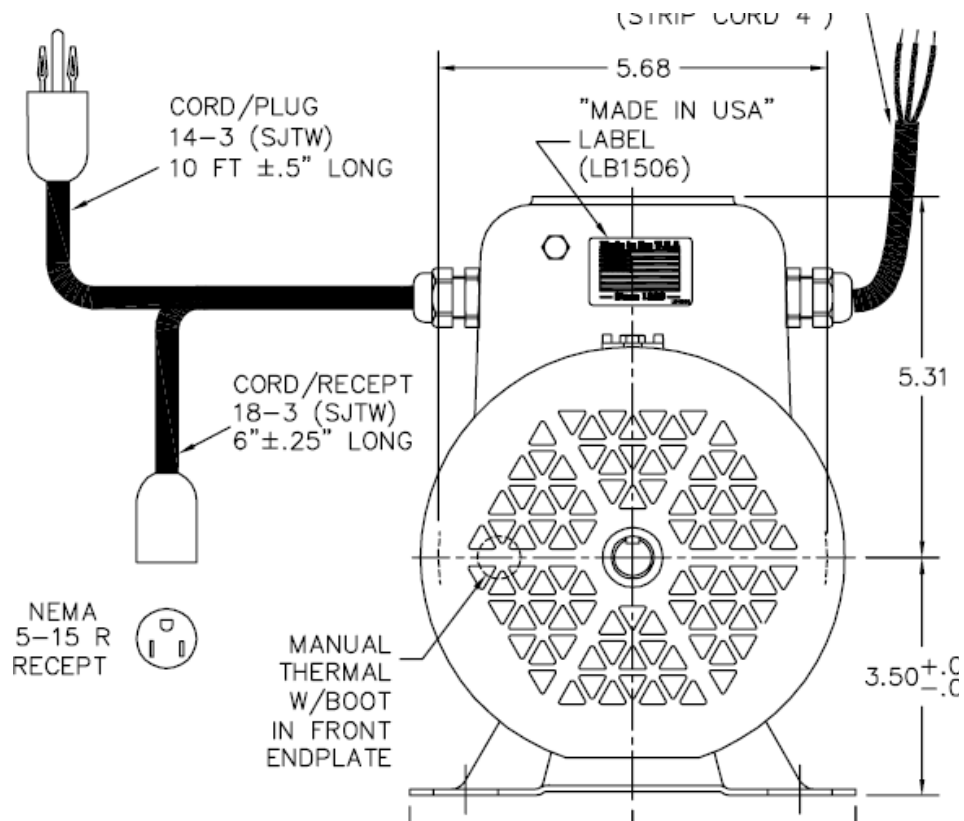
SPECIFICATION SHEET

Date
09/06/13

MK Part Number 169223G_IR	MK Description MTR, 1-1/2HP, 115V, SBOX, GRN	Revision A
Manufacturer P/N 34M300R006G1	Manufacturer/Vendor Description MOTOR, 1.5HP, 3400RPM, 1PH, 60HZ, 56YZ, 3416LC, TCFC	
Manufacturer Information BALDOR ELECTRIC CO. FORT SMITH, AR 72901	Vendor Information POWER REPS, INC. V# 002520	Alternate Manufacturer NONE

Specifications:

THIS SPECIFICATION SHEET COVERS THE INITIAL RELEASE PURCHASED MOTOR 169223G REV.A MOTOR IS NOW CONTROLLED WITH DRAWING 169223G



SEE PAGES 3-12 FOR FULL SPECIFICATIONS

REPLACEMENT PARTS FOR 169223G REV. IR

171021 CAPACITOR, START, EC1189A02SP

171022 CAPACITOR, RUN, OC3030F11SP

Rev	Description	Date	Approved
-	INITIAL RELEASE, ECO# 2082	09/06/13	SMH
A	CHANGED FROM PURCH TO MAKE, ECO# 2401	7/23/18	SSH

MK Diamond Products, Inc.
 1315 Storm Parkway
 Torrance, CA 90509-2803

SPECIFICATION SHEET			Date 09/06/13
MK Part Number 169223G-NL	MK Description MTR, 1-1/2HP, 115V, SBOX, GRN, NL	Revision A	
ITEM TYPE TYPE 0	PLANNER 90000		
AS400 BOM FOR 168022G-NL: 1) 1EA 169223G MTR, 1-1/2HP, 115V, SBOX, GRN			
<p>MODIFICATION INSTRUCTIONS:</p> <p>GRIND OR MILL TO REMOVE MK LOGO FROM TOP OF CAPACITOR BOX AND TOUCH UP WITH APPROPRIATE COLOR SPRAY PAINT.</p>			
Rev	Description	Date	Approved
-	INITIAL RELEASE, ECO# 2082	09/06/13	SMH
A	CHANGE FROM PURCH TO MAKE, ECO# 2401	7/23/18	SSH

BALDOR® • RELIANCE 

Product Information Packet
MK DIAMOND PRODUCTS

34M300R006G1

1.5HP,3400RPM,1PH,60HZ,56YZ,3416LC,TEFC

Part Detail							
Revision:	H	Status:	PRD/A	Change #:		Proprietary:	Yes
Type:	AC	Elec. Spec:	34WGR006	CD Diagram:	CD0815B05	Mfg Plant:	
Mech. Spec:	34M300	Layout:	34LYM300	Poles:	02	Created Date:	08-16-2013
Base:	RG	Eff. Date:	08-23-2018	Leads:	1#14 #4TH,3#16,5#18 8,E,W/ 8,E AND W/RED		

Specs			
Enclosure:	TEFC	KVA Code:	D
Frame:	56YZ	Lifting Lugs:	No Lifting Lugs
Frame Material:	Steel	Locked Bearing Indicator:	No Locked Bearing
Output @ Frequency:	1.500 HP @ 60 HZ	Motor Lead Quantity/Wire Size:	1 @ 14 AWG, #4TH
Synchronous Speed @ Frequency:	3600 RPM @ 60 HZ	Motor Lead Exit:	Cap Box
Voltage @ Frequency:	115.0 V @ 60 HZ	Motor Lead Termination:	Cord And Plug
XP Class and Group:	None	Motor Type:	3416LC
XP Division:	Not Applicable	Mounting Arrangement:	F1
Agency Approvals:	UR	Product Family:	General Purpose
	CSA	Pulley End Bearing Type:	Ball
Auxillary Box:	No Auxillary Box	Pulley Face Code:	Standard
Auxillary Box Lead Termination:	None	Pulley Shaft Indicator:	Standard
Base Indicator:	Rigid	Rodent Screen:	None
Bearing Grease Type:	Polyrex EM (-20F +300F)	RoHS Status:	ROHS COMPLIANT
Blower:	None	Shaft Extension Location:	Pulley End
Current @ Voltage:	14.500 A @ 115.0 V	Shaft Ground Indicator:	No Shaft Grounding
Design Code:	-	Shaft Rotation:	Fixed Standard
Drip Cover:	No Drip Cover	Shaft Slinger Indicator:	No Slinger

Product Information Packet: 34M300R006G1 - 1.5HP,3400RPM,1PH,60HZ,56YZ,3416LC,TEFC

Duty Rating:	30 MIN	Speed Code:	Single Speed
Electrically Isolated Bearing:	Not Electrically Isolated	Motor Standards:	NEMA
Feedback Device:	NO FEEDBACK	Starting Method:	Direct on line
Front Face Code:	Standard	Thermal Device - Bearing:	None
Front Shaft Indicator:	None	Thermal Device - Winding:	None
Heater Indicator:	No Heater	Vibration Sensor Indicator:	No Vibration Sensor
Insulation Class:	F	Winding Thermal 1:	Manual Thermal Overload
Inverter Code:	Not Inverter	Winding Thermal 1 Location:	EP
		Winding Thermal 2:	None

Nameplate NP1308L										
CAT.NO.	169223G									
SPEC.	34M300R006G1									
HP	1.5									
VOLTS	115									
AMP	14.5									
RPM	3400									
FRAME	56YZ			HZ	60			PH	1	
SER.F.	1.00			CODE	D		DES	-	CLASS	F
NEMA-NOM-EFF				PF						
RATING	25C AMB-30 MIN									
CC							USABLE AT 208V			
DE	6203			ODE	6203					
ENCL	TEFC			SN						

Parts List		
Part Number	Description	Quantity
SA268406	SA 34M300R006G1	1.000 EA
RA255064	RA 34M300R006G1	1.000 EA
OC3030F11SP	CAPACITOR 30 MFD 370 VAC	1.000 EA
TPMRJ22RB	THERMAL 1PH 0.75 MAN 120C	1.000 EA
EC1189A02SP	61B2D120189NNBA ELEC CAP, 189-227MFD, 12	1.000 EA
NS2512A01	INSULATOR, CONDUIT BOX X	1.000 EA
HA6001A03	THERMAL RETAINER (PLATED)	1.000 EA
NS2500A04	THERMAL INSULATOR W/OD OF 1.170	1.000 EA
RM1101	BOOT PROTECTOR FOR MANUAL THERMAL	1.000 EA
34CB5008A03	LC BOX ASSY. 3 CORDS, GROUND	1.000 EA
NS2501A02	INSULATOR, CAPACITOR BOX	1.000 EA
34GS3002	GASKET, CAPACITOR BOX	1.000 EA
51XB1214A08	12-14 X 1/2HX WS SL SR TYBX	2.000 EA
11XW1032G06	10-32 X .38, TAPTITE II, HEX WSHR SLTD U	2.000 EA
34EP3109A27	FR ENDPLATE, MACH	1.000 EA
51XW0832A07	8-32 X .44, TAPTITE II, HEX WSHR SLTD SE	2.000 EA
51XW0832A07	8-32 X .44, TAPTITE II, HEX WSHR SLTD SE	2.000 EA
HW5100A03	WAVY WASHER (W1543-017)	1.000 EA
34EP3109A28	FR ENDPLATE, MACH	1.000 EA
XY1032A02	10-32 HEX NUT DIRECTIONAL SERRATION	4.000 EA
34FN3002A01SP	EXTERNAL FAN, PLASTIC, .637/.639 HUB W/	1.000 EA
34FH4002A03SP	IEC FH NO GREASER W/.88 DIA SHAFT HOLE,	1.000 EA
51XW1032A06	10-32 X .38, TAPTITE II, HEX WSHR SLTD S	3.000 EA
HW2501D13	KEY, 3/16 SQ X 1.375	1.000 EA

Parts List (continued)		
Part Number	Description	Quantity
HA7000A04	KEY RETAINER 0.625 DIA SHAFTS	1.000 EA
LB1009N	LABEL,ROTATION DIRECTION (ON ROLLS)	1.000 EA
WD1000A16	2-520128-2 AMP FLAG TERMINAL(4M/RL)	3.000 EA
WD4006A04	T&B RC-6,WIRE JOINT (BULK PACK)	4.000 EA
HW3207A02	7 1/2" DENN CABLE TIE (F/S)	1.000 EA
MG1025N02	WILKOFAST, 788.02, MK DIAMOND GREEN	0.014 GA
34GS5003A01	FOAM SLEEVE, ID = 2 1/16" X 4 3/8"	2.000 EA
85XU0407S04	4X1/4 U DRIVE PIN STAINLESS	2.000 EA
SP5051A26	MODEL 35 TORQ STATIONARY SWITCH W/ LEADS	1.000 EA
HA3100A47	THRUBOLT 10-32 X 7.625	4.000 EA
LB1119N	WARNING LABEL	1.000 EA
LB1087	LABEL,MANUAL RESET (ROLL LABEL)	1.000 EA
NP1308L	NAMEPLATE "MK DIAMOND" UL,CSA	1.000 EA
35PA1088	PALLET PACK KIT, 8 PK	1.000 EA
HW3000B65	EYELET, STIMP #A-1085 FOR .88 DIA HOLE	1.000 EA
LB1417	LABEL CARTON 6X4 PERFORATED BLANK ROLLS	1.000 EA

AC Induction Motor Performance Data
Record # 41347 - Typical performance - not guaranteed values

Winding: 34WGR006-R001	Type: 3416LC	Enclosure: TEFC
-------------------------------	---------------------	------------------------

Nameplate Data				115 V, 60 Hz: Low Voltage Connection	
Rated Output (HP)	1.5			Full Load Torque	2.32 LB-FT
Volts	115			Start Configuration	direct on line
Full Load Amps	14.5			Breakdown Torque	4.11 LB-FT
R.P.M.	3400			Pull-up Torque	1.73 LB-FT
Hz	60	Phase	1	Locked-rotor Torque	3.7 LB-FT
NEMA Design Code	-	KVA Code	D	Starting Current	55.2 A
Service Factor (S.F.)	1			No-load Current	6.13 A
NEMA Nom. Eff.	0	Power Factor	0	Line-line Res. @ 25°C	0.651 Ω A Ph 4.17 Ω B Ph
Rating - Duty	25C AMB-30 MIN			Temp. Rise @ Rated Load	

Load Characteristics 115 V, 60 Hz, 1.5 HP

% of Rated Load	25	50	75	100	125
Power Factor	71	86	91	94	93
Efficiency	53.4	67.6	73.3	68.5	62.3
Speed	3544	3492	3444	3352	3222
Line amperes	6.68	8.63	11	15	19.9

Performance Graph at 115V, 60Hz, 1.5HP Typical performance - Not guaranteed values

