

MK Diamond Products, Inc.  
 1315 Storm Parkway  
 Torrance, CA 90509-2803

<b>SPECIFICATION SHEET</b>			Date 8/24/09
MK Part Number <b>167909</b>	MK Description Motor ¾ hp, 220v, 50 hz	Revision -	
Manufacturer P/N <b>L1307-50</b>	Manufacturer Description -		
Manufacturer Information BALDOR	Vendor Information POWER REPS	Alternate Manufacturer Or Equivalent	
<p>Specifications:</p> <p style="text-align: center; font-size: 1.2em;"><b>.75HP, 1425RPM, 1PH, 50HZ, 56, 3524L, OPEN, F1</b></p> <p>General Characteristics            Full Load Torque: 2.8 LB-FT Start Configuration: DOL            No-Load Current: 3.2 Amps Break-Down Torque: 5.5 LB-FT            Line-line Res. @ 25°C.: 0.911 Ohms A Ph / 2.44 Ohms B Ph Pull-Up Torque: 4.5 LB-FT            Temp. Rise @ Rated Load: 49 C Locked-Rotor Torque: 6.2 LB-FT            Temp. Rise @ S.F. Load: 63 C Starting Current: 24.0 Amps</p> <p>Load Characteristics            % of Rated Load 25 50 75 100 125 150 S.F.            Power Factor: 41.0 57.0 69.0 77.0 82.0 86.0 0.0            Efficiency: 46.6 61.1 66.5 68.0 67.0 63.9 0.0            Speed: 1481.0 1466.0 1448.0 1428.0 1403.0 1369.0 0.0            Line Amperes: 3.35 3.65 4.15 4.85 5.75 6.95 5.75</p> <p>CAT.NO. L1307-50            SPEC. 35D11Y978            HP .75            VOLTS 110/220</p>			
Rev	Description	Date	Approved
-	INITIAL RELEASE	8/24/09	RMR



**BALDOR® • RELIANCE**

**Product Information Packet**

**L1307-50**

**.75HP, 1425RPM, 1PH, 50HZ, 56, 3524L, OPEN, F1**

Part Detail							
Revision:	AF	Status:	PRD/A	Change #:		Proprietary:	No
Type:	AC	Prod. Type:	3524L	Elec. Spec:	35WGY978	CD Diagram:	
Enclosure:	OPEN	Mfg Plant:		Mech. Spec:	35D011	Layout:	
Frame:	56	Mounting:	F1	Poles:	04	Created Date:	
Base:	RG	Rotation:	R	Insulation:	B	Eff. Date:	01-23-2013
Leads:	6#18	Literature:		Elec. Diagram:		Replaced By:	
Nameplate NP1372L							
CAT.NO.	L1307-50						
SPEC.	35D11Y978						
HP	.75						
VOLTS	110/220						
AMP	10/5						
RPM	1425 IP23						
FRAME	56	HZ	50	PH	1		
SER.F.	1.25	CODE	J	DES	N	CL	B
NEMA-NOM-EFF	88	PF	78				
RATING	40C AMB-CONT						
CC	USABLE AT 208V						
DE	6205	ODE	6203				
ENCL	OPEN	SN					
	SFA 12/8						

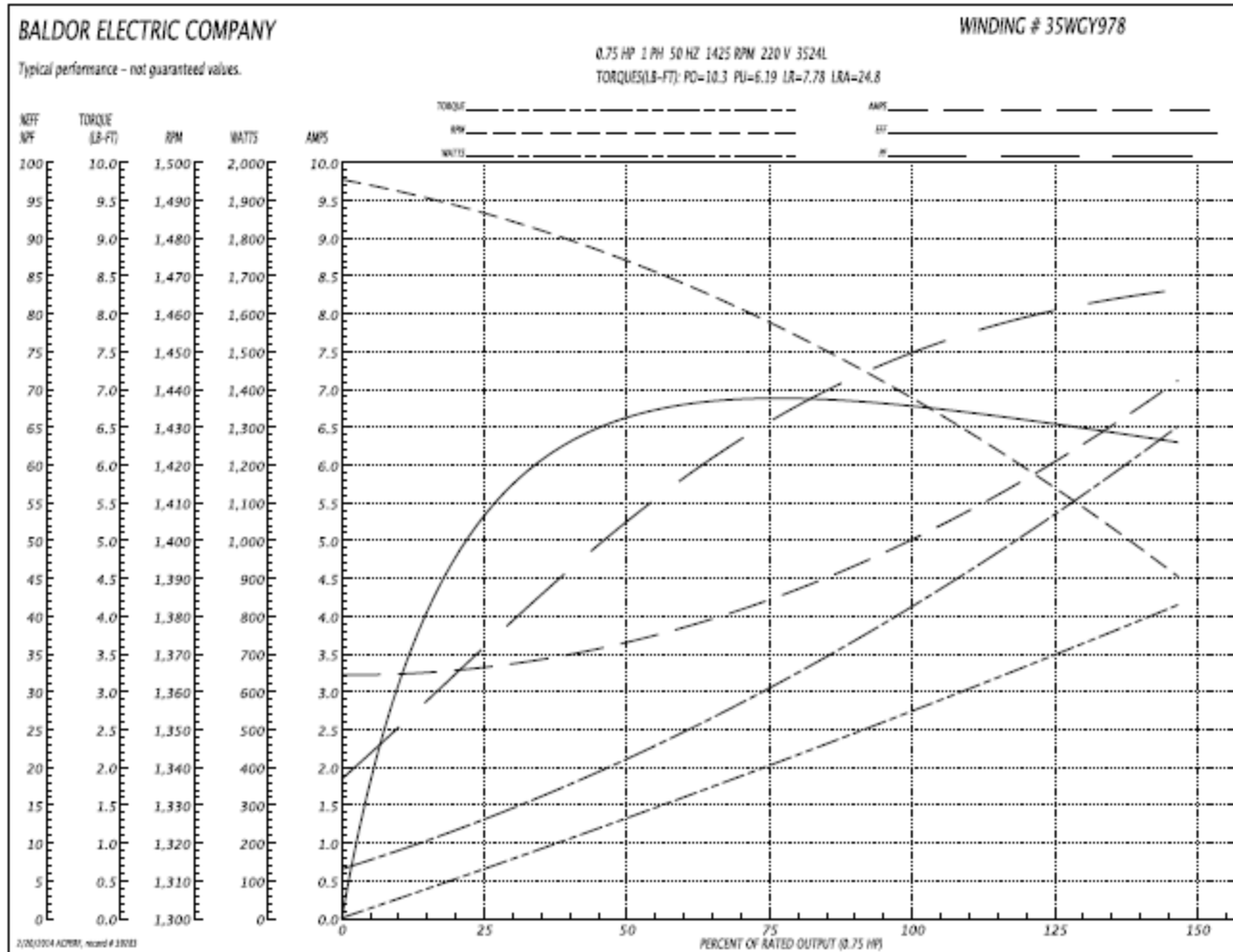
Parts List		
Part Number	Description	Quantity
SA022644	SA 35D11Y978	1.000 EA
RA018694	RA 35D11Y978	1.000 EA
EC1460A03	ELEC CAP 115V 1.8 X 3.3 CK - WESTVILLE	1.000 EA
NS2512A01	INSULATOR, CONDUIT BOX X	1.000 EA
35CB3007	35 CB CASTING W/.88 DIA. LEAD HOLE	1.000 EA
51XB1018A07	10-16 X 7/16 HXWSSLD SERTYB	2.000 EA
11XW1032G06	10-32 X .38, TAPTITE II, HEX WSHR SLTD U	1.000 EA
35EP3201A03	STD FR EP OPEN-203BRG-35L OR M FRAME-LE	1.000 EA
51XW0832A07	8-32 X .44, TAPTITE II, HEX WSHR SLTD SE	2.000 EA
NS2501A01	INSULATOR, CAPACITOR	1.000 EA
51XB1018A05	10-16X5/16HX WA SL SR TYB (F/S)	2.000 EA
HW5100A03SP	WAVY WASHER (W1543-017)	1.000 EA
35EP3200A02	STD PU ENDPLATE-OPEN-205 BRG	1.000 EA
XY1032A02	10-32 HEX NUT DIRECTIONAL SERRATION	4.000 EA
35CB4521	35 LIPPED CB LID (GALV & PHOSPH)	1.000 EA
51XW0832A07	8-32 X .44, TAPTITE II, HEX WSHR SLTD SE	4.000 EA
HW2501D13SP	KEY, 3/16 SQ X 1.375	1.000 EA
HA7000A04	KEY RETAINER 0.625 DIA SHAFTS	1.000 EA
85XU0407S04	4X1/4 U DRIVE PIN STAINLESS	2.000 EA
SP1006A01	TERM. BOARD, MODE 35 SW X H-23655	1.000 EA
WD1000A15	3-520132-2 AMP FLAG (4MRL NON-CANC/NON-	2.000 EA
MJ1000A75	GREASE, POLYREX EM EXXON	0.050 LB
MG1000G27	MUNSELL - 8.45BG 3.14/0.05 METALLIC GREY	0.017 GA
SP5055A67	MODEL 35 TYPE L STATIONARY SWITCH	1.000 EA

Parts List (continued)		
Part Number	Description	Quantity
35CB4802A02SP	CAPACITOR COVER, STAMPED X W/AUTOPHORET	1.000 EA
HA3100A18	THRUBOLT 10-32 X 9.250	4.000 EA
LB1119	WARNING LABEL	1.000 EA
LB1125C01	STD (STOCK) CARTON LABEL BALDOR WITH FLA	1.000 EA
LB5040	INSTRUCTION TAG, AC & DC	1.000 EA
LC0001	CONN LABEL TYPE L, 6 LEAD, DUAL VOLTS, R	1.000 EA
NP1372L	ALUM UL CSA CE CC	1.000 EA
35PA1066	PACKING GROUP COMBINED PRINT	1.000 EA

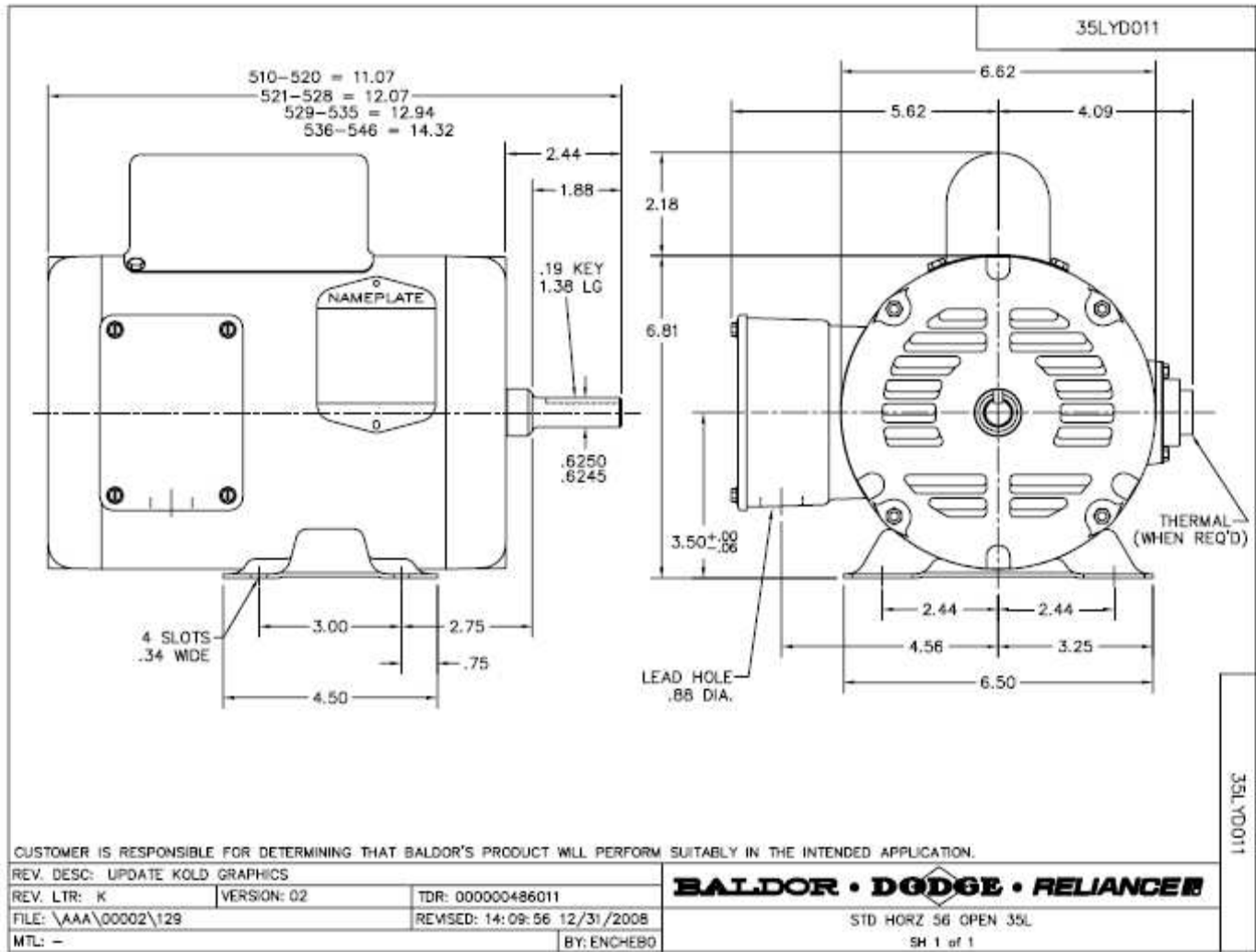
Accessories		
Part Number	Description	Multiplier
35-8784	C FACE KIT	A8
35EP1804A01SP	D-FLANGE KIT	A8

Performance Data at 220V, 50Hz, 0.75HP (Typical performance - Not guaranteed values)							
General Characteristics							
Full Load Torque:	2.7 LB-FT			Start Configuration:	DOL		
No-Load Current:	3.2 Amps			Break-Down Torque:	10.3 LB-FT		
Line-line Res. @ 25°C.:	3.6894 Ohms A Ph / 2.2413 Ohms B Ph			Pull-Up Torque:	6.19 LB-FT		
Temp. Rise @ Rated Load:				Locked-Rotor Torque:	7.78 LB-FT		
Temp. Rise @ S.F. Load:				Starting Current:	24.8 Amps		
Load Characteristics							
% of Rated Load	25	50	75	100	125	150	S.F.
Power Factor:	38.0	54.0	66.0	74.0	80.0	83.0	80.0
Efficiency:	52.8	65.1	68.6	68.7	66.3	62.4	66.3
Speed:	1484.4	1472.1	1456.5	1440.8	1416.4	1388.3	1416.0
Line Amperes:	3.35	3.69	4.26	4.94	5.98	7.16	5.98

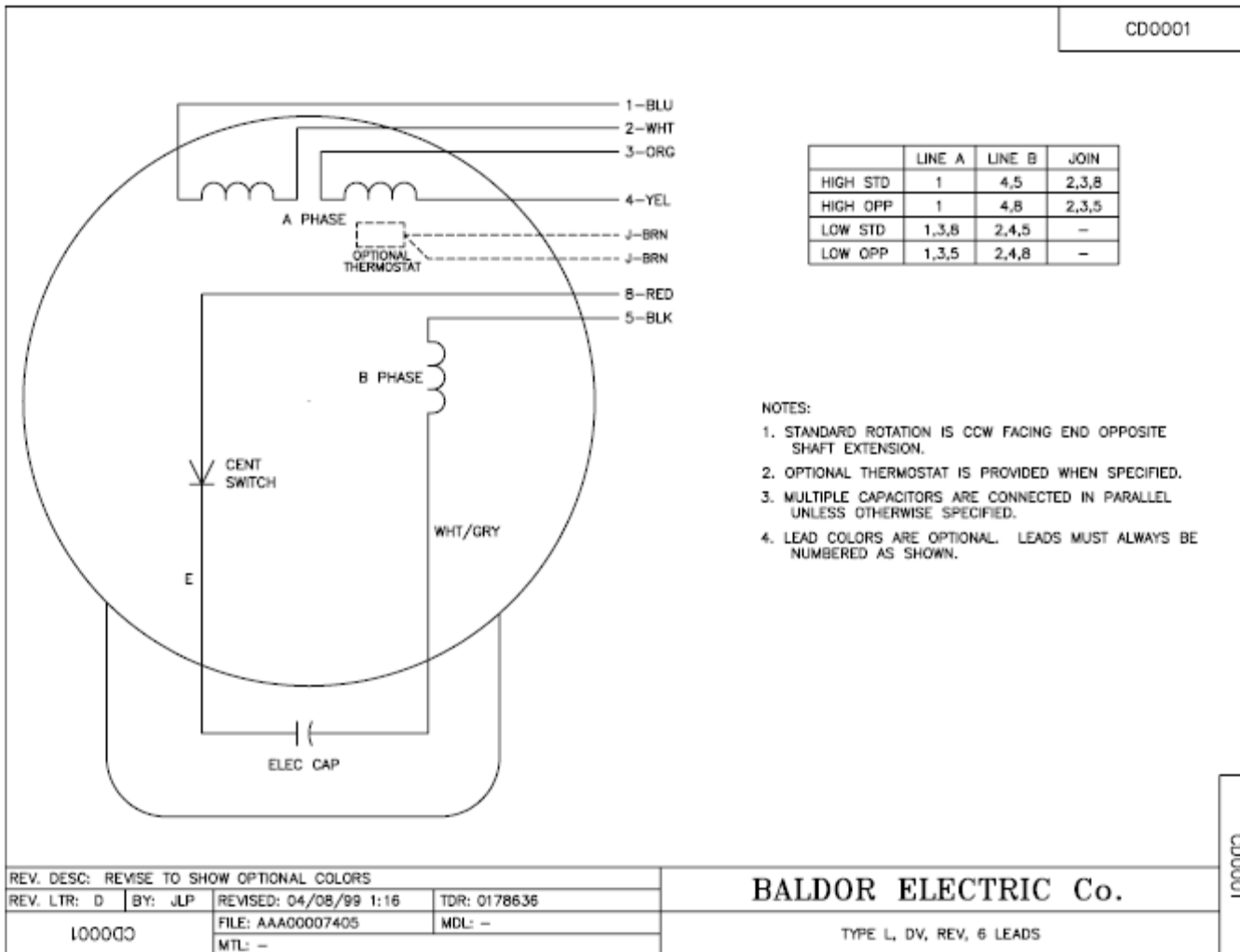
Performance Graph at 220V, 50Hz, 0.75HP Typical performance - Not guaranteed values







CD0001



	LINE A	LINE B	JOIN
HIGH STD	1	4,5	2,3,8
HIGH OPP	1	4,8	2,3,5
LOW STD	1,3,8	2,4,5	-
LOW OPP	1,3,5	2,4,8	-

- NOTES:
1. STANDARD ROTATION IS CCW FACING END OPPOSITE SHAFT EXTENSION.
  2. OPTIONAL THERMOSTAT IS PROVIDED WHEN SPECIFIED.
  3. MULTIPLE CAPACITORS ARE CONNECTED IN PARALLEL UNLESS OTHERWISE SPECIFIED.
  4. LEAD COLORS ARE OPTIONAL. LEADS MUST ALWAYS BE NUMBERED AS SHOWN.

REV. DESC: REVISE TO SHOW OPTIONAL COLORS			
REV. LTR: D	BY: JLP	REVISED: 04/08/99 1:16	TDR: 0178636
100000		FILE: AAAG0007405	MDL: -
		MTL: -	

**BALDOR ELECTRIC Co.**

TYPE L, DV, REV, 6 LEADS

CD0001