


MK Diamond Products, Inc.  
1315 Storm Parkway  
Torrance, CA 90509-2803

<b>SPECIFICATION SHEET</b>			Date 11/22/19																																																
MK Part Number <b>161678</b>	MK Description MTR, 1/3HP 110/220V 50HZ	Revision -																																																	
Manufacturer/Supplier P/N 110394	Manufacturer/Vendor Description Leeson 0.33 HP Special Voltage Motor, 1 ph, 1500 RPM, 110/220 V, 56, ODP																																																		
Manufacturer Information LEESON	Supplier Information CAL INDUSTRIAL	Alternate Supplier GRAINGER																																																	
Specifications:																																																			
<p>Product Information Packet: Model No: C6C14DB5G, Catalog No:110394.00 1/3HP..25kW.1425RPM.56.IP22..V.1PH.50HZ.CONT.NOT.40C.1.35SF.RIGID.50 HERTZ.C6C14DB5G</p> <div style="text-align: right;">  </div> <p><b>Nameplate Specifications</b></p> <table border="1" style="width: 100%; border-collapse: collapse;"> <tbody> <tr> <td>Output HP</td><td>0.33 Hp</td><td>Output KW</td><td>0.25 kW</td></tr> <tr> <td>Frequency</td><td>50 Hz</td><td>Voltage</td><td>110/220 V</td></tr> <tr> <td>Current</td><td>6.4/3.2 A</td><td>Speed</td><td>1425 rpm</td></tr> <tr> <td>Service Factor</td><td>1.35</td><td>Phase</td><td>1</td></tr> <tr> <td>Efficiency</td><td>65.3 %</td><td>Duty</td><td>Continuous</td></tr> <tr> <td>Insulation Class</td><td>B</td><td>Design Code</td><td>NO DESIGN CODE</td></tr> <tr> <td>KVA Code</td><td>L</td><td>Frame</td><td>56</td></tr> <tr> <td>Enclosure</td><td>Drip Proof</td><td>Overload Protector</td><td>No</td></tr> <tr> <td>Ambient Temperature</td><td>40 °C</td><td>Drive End Bearing Size</td><td>6203</td></tr> <tr> <td>Opp Drive End Bearing Size</td><td>6203</td><td>UL</td><td>Recognized</td></tr> <tr> <td>CSA</td><td>Y</td><td>CE</td><td>Y</td></tr> <tr> <td>IP Code</td><td>22</td><td></td><td></td></tr> </tbody> </table>				Output HP	0.33 Hp	Output KW	0.25 kW	Frequency	50 Hz	Voltage	110/220 V	Current	6.4/3.2 A	Speed	1425 rpm	Service Factor	1.35	Phase	1	Efficiency	65.3 %	Duty	Continuous	Insulation Class	B	Design Code	NO DESIGN CODE	KVA Code	L	Frame	56	Enclosure	Drip Proof	Overload Protector	No	Ambient Temperature	40 °C	Drive End Bearing Size	6203	Opp Drive End Bearing Size	6203	UL	Recognized	CSA	Y	CE	Y	IP Code	22		
Output HP	0.33 Hp	Output KW	0.25 kW																																																
Frequency	50 Hz	Voltage	110/220 V																																																
Current	6.4/3.2 A	Speed	1425 rpm																																																
Service Factor	1.35	Phase	1																																																
Efficiency	65.3 %	Duty	Continuous																																																
Insulation Class	B	Design Code	NO DESIGN CODE																																																
KVA Code	L	Frame	56																																																
Enclosure	Drip Proof	Overload Protector	No																																																
Ambient Temperature	40 °C	Drive End Bearing Size	6203																																																
Opp Drive End Bearing Size	6203	UL	Recognized																																																
CSA	Y	CE	Y																																																
IP Code	22																																																		
Rev	Description	Date	Approved																																																
-	CREATED SPEC SHEET	11/22/19	SSH																																																

## PRODUCT INFORMATION PACKET

Model No: C6C14DB5G

Catalog No: 110394.00

1/3HP..25kW.1425RPM.56.IP22..V.1PH.50HZ.CONT.NOT.40C.1.35SF.RIGID.50 HERTZ.C6C14DB5G  
50 Hz



Regal and Leeson are trademarks of Regal Beloit Corporation or one of its affiliated companies.  
©2018 Regal Beloit Corporation, All Rights Reserved. MC017097E





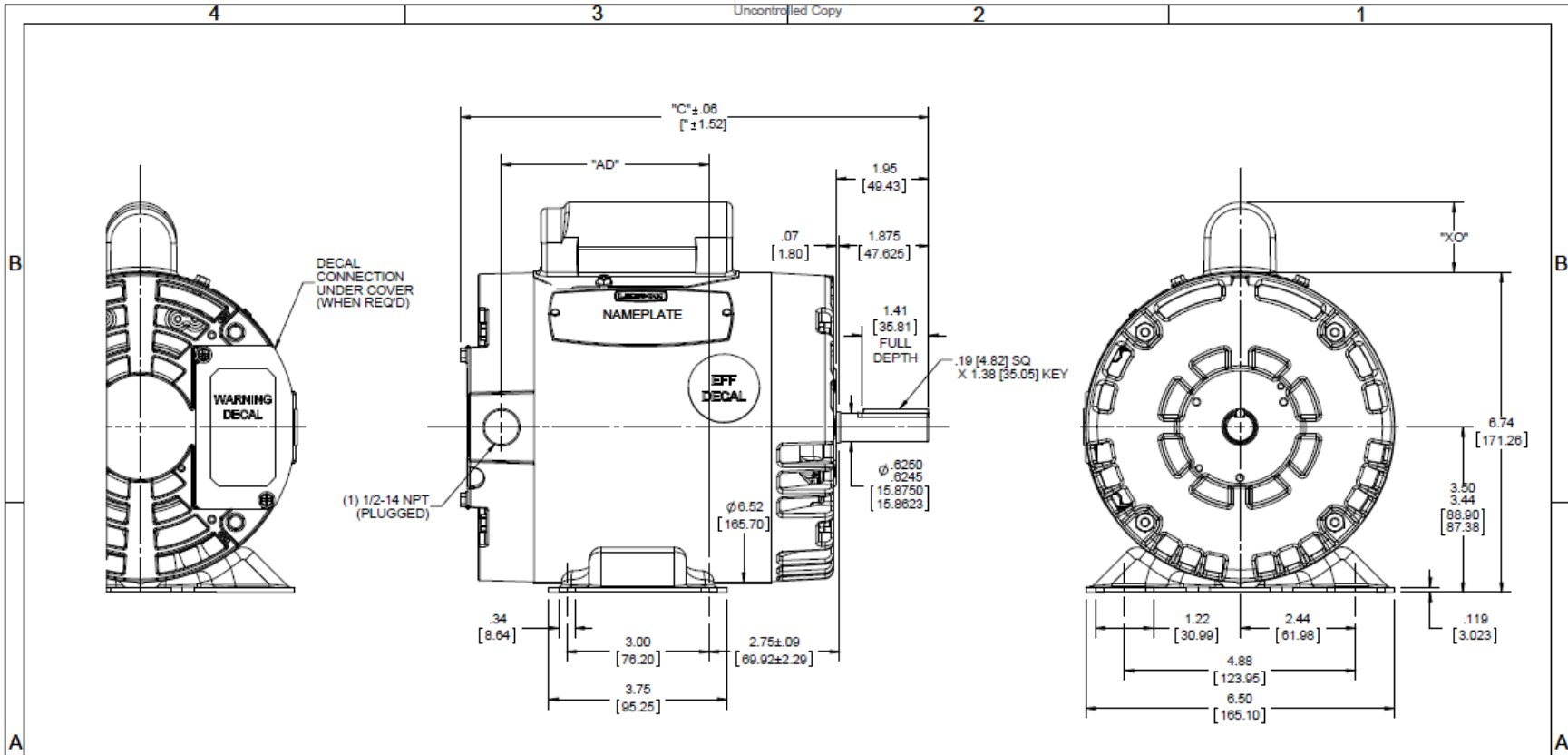
### Nameplate Specifications

Output HP	0.33 Hp	Output KW	0.25 kW
Frequency	50 Hz	Voltage	110/220 V
Current	6.4/3.2 A	Speed	1425 rpm
Service Factor	1.35	Phase	1
Efficiency	65.3 %	Duty	Continuous
Insulation Class	B	Design Code	NO DESIGN CODE
KVA Code	L	Frame	56
Enclosure	Drip Proof	Overload Protector	No
Ambient Temperature	40 °C	Drive End Bearing Size	6203
Opp Drive End Bearing Size	6203	UL	Recognized
CSA	Y	CE	Y
IP Code	22		

### Technical Specifications

Electrical Type	Capacitor Start Induction Run	Starting Method	Across The Line
Poles	4	Rotation	Selective Counterclockwise
Mounting	Rigid base	Motor Orientation	HORIZONTAL
Drive End Bearing	BALL	Opp Drive End Bearing	BALL
Frame Material	Rolled Steel	Shaft Type	NEMA 56
Overall Length	9.84 in	Frame Length	5.00 in
Shaft Diameter	0.625 in	Shaft Extension	1.88 in
Assembly/Box Mounting	F1 ONLY		
Outline Drawing	028601-500A	Connection Diagram	005390.01

This is an uncontrolled document once printed or downloaded and is subject to change without notice. Date Created: 10/15/2018



DASH NO.	"C"	"AD"	CAP DASH	"XO"
500	9.87 [250.70]	4.38 [111.25]		
550	10.37 [263.40]	4.88 [123.95]	A	1.48 [37.59]
650	11.37 [288.80]	5.88 [149.35]	B	1.94 [49.28]
700	11.87 [301.50]	6.38 [162.05]	C	2.19 [55.62]

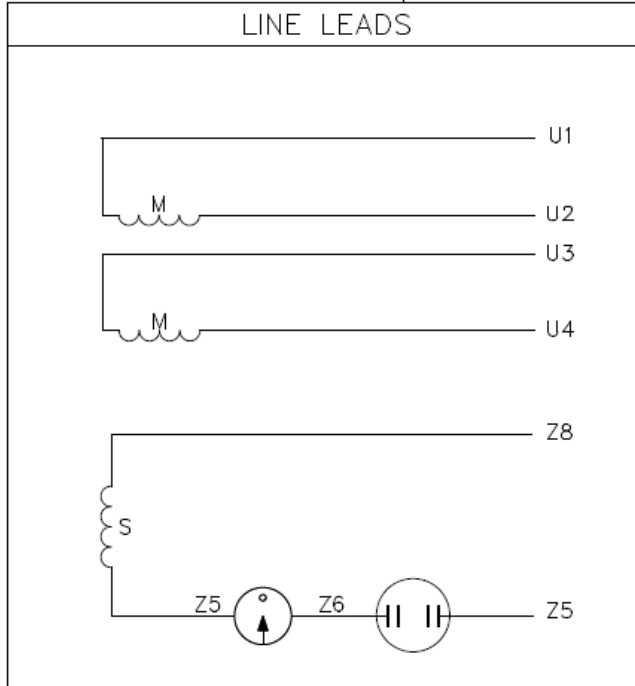
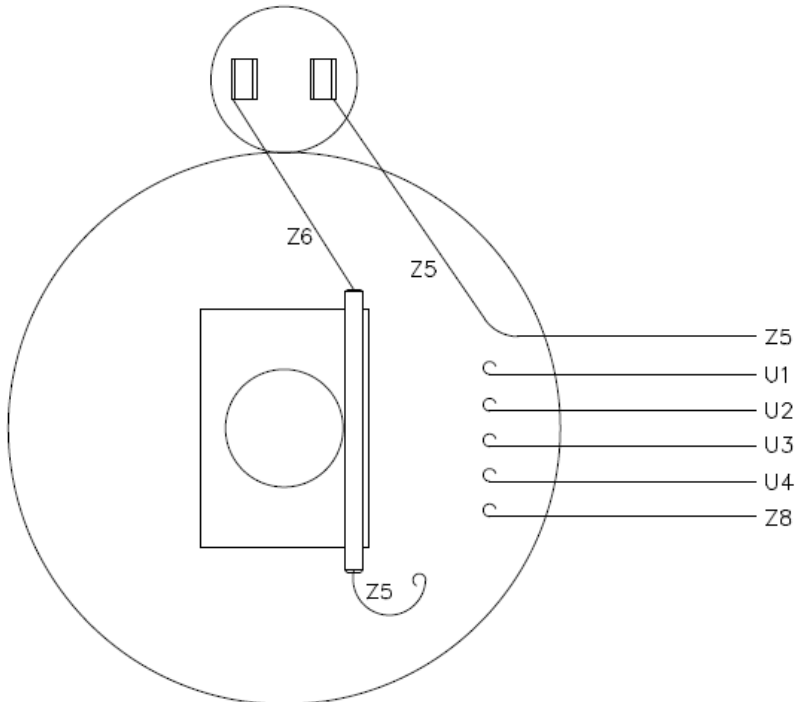
DRAWING REVISION C	REVISION BY A.SUPPANNAVAR	DATE 12/21/2017
ECO ECO-0143018	APPROVED BY PK	DATE 04/10/2018
ECO DESCRIPTION OUTLINE CONVERSION PROJECT		
<small>COPYRIGHT REGAL BELOIT AMERICA, INC. ALL RIGHTS RESERVED.          PROPRIETARY AND CONFIDENTIAL INFORMATION - THIS DOCUMENT IS THE PROPERTY OF          REGAL BELOIT AMERICA, INC. FORMERLY AND CONTAINS OWNERS PROPRIETARY          INFORMATION AND PERSONAL CORPORATION OR OTHER FIRM RECEIVING IT IS DEEMED,          BY RECEIVING IT, TO AGREE THAT IT, AND/OR ANY PART OF IT, SHALL NOT BE DISCLOSED          TO ANY PERSON, CORPORATION OR OTHER ENTITY, DUPLICATED, AND/OR USED, EXCEPT          AS EXPRESSLY APPROVED IN WRITING IN ADVANCE BY OWNER. THIS DOCUMENT SHALL          BE RETURNED TO OWNER UPON REQUEST. IT MAY BE SUBJECT TO OTHER          RESTRICTIONS UNDER APPLICABLE EXPORT CONTROL LAWS AND REGULATIONS.</small>		

TOLERANCES UNLESS OTHERWISE SPECIFIED:			
DEC.	INCH	mm	ANGLE
X	±0.1	[±2.5]	±0.5°
XX	±0.03	[±0.76]	
XXX	±0.005	[±0.127]	
XXXX	±0.0005	[±0.0127]	
REMOVE BURRS & BREAK SHARP EDGES: .003 D15 [076/361] X 45°			
CORNER FILETS: R.02 [51]			
MACHINED SURFACES: .15 INCH √ mm 3.2			
mm SHOWN IN [BRACKETS]			

DRAWN BY RDW	Regal Beloit America, Inc.	
DATE 7/1/04	DESCRIPTION OUTLINE 56-FRAME DRIP PROOF RIGID	
APPROVED BY SW	MATERIAL	PROCESS/FINISH
DATE 7/1/04	REFERENCE 028601	
THIRD ANGLE PROJECTION	SIZE B	DRAWING NUMBER 028601
		SHEET 1 OF 1

005390-01

VIEW FROM OUTSIDE OF MOTOR AT SWITCH END.



	ROTATION FACING LEAD END	L1	L2	JOIN
HIGH VOLT	C.C.W.	U1	U4 Z5	U2,U3 Z8
	C.W.	U1	U4 Z8	U2,U3 Z5
LOW VOLT	C.C.W.	U1,U3 Z8	U2,U4 Z5	---
	C.W.	U1,U3 Z5	U2,U4 Z8	---

TOLERANCES UNLESS SPECIFIED	
DEC.	INCHES
.X	±.1
.XX	±.01
.XXX	±.005
.XXXX	±.0005
CHK	ANG ±1/2°



ELECTRIC MOTORS  
GEARMOTORS  
AND DRIVES

DRAWN	RSK 09/09/96
CHK	
APPD	
SCALE	1=1
REF	005005-01
FMF	114964.00
PREV	

TITLE	EXTERNAL WIRING DIAGRAM TYPE "C" W/O PROTECTOR
MAT'L	DECAL - 080642
FINISH	LEESON CANADA

THIS DRAWING IN DESIGN AND DETAIL IS OUR PROPERTY AND MUST NOT BE USED EXCEPT IN CONNECTION WITH OUR WORK ALL RIGHTS OF DESIGN AND INVENTION ARE RESERVED THIS IS AN ELECTRONICALLY GENERATED DOCUMENT - DO NOT SCALE THIS PRINT

NO.	REVISION	BY & DATE	CHK	ANG	±1/2°	FINISH	LEESON CANADA	RFP	CAD FILE	00539001	SIZE	DRAWING NO.	REV.
								DIST			A	005390-01	

