

MK Diamond Products, Inc.
 1315 Storm Parkway
 Torrance, CA 90509-2803

SPECIFICATION SHEET			Date 10/9/13
MK Part Number 161672	MK Description MTR, .33HP 115V 60HZ 1PH	Revision A	
Vendor P/N 34F840R365G1	Manufacturer Description .33HP, 1725RPM, 1PH, 60HZ, 48Y, 3414L, OPEN, F1 14L 4P OPEN HOR 48 MTO		
Manufacturer Information BALDOR ELECTRIC COMPANY FORT SMITH, ARKANSAS	Vendor Information POWER REPS, INC. V# 002520	Alternate Manufacturer Approved only	
Specifications: <p style="text-align: center;">SEE ATTACHED SHEETS</p> <u>Approved Alternates</u> WEG Product Code 13039446, Catalog # .3318OT1B48-S			
Rev	Description	Date	Approved
-	Initial Release	10/9/13	JRJ
A	Was Baldor 17K180W470G1/Leeson 191869.00, ECO# 2121	09/21/15	SMH

Winding: 34WGR365

Type: 3414LC

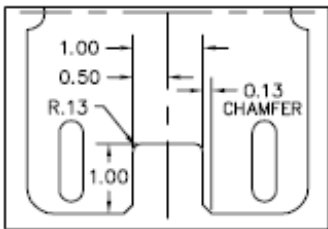
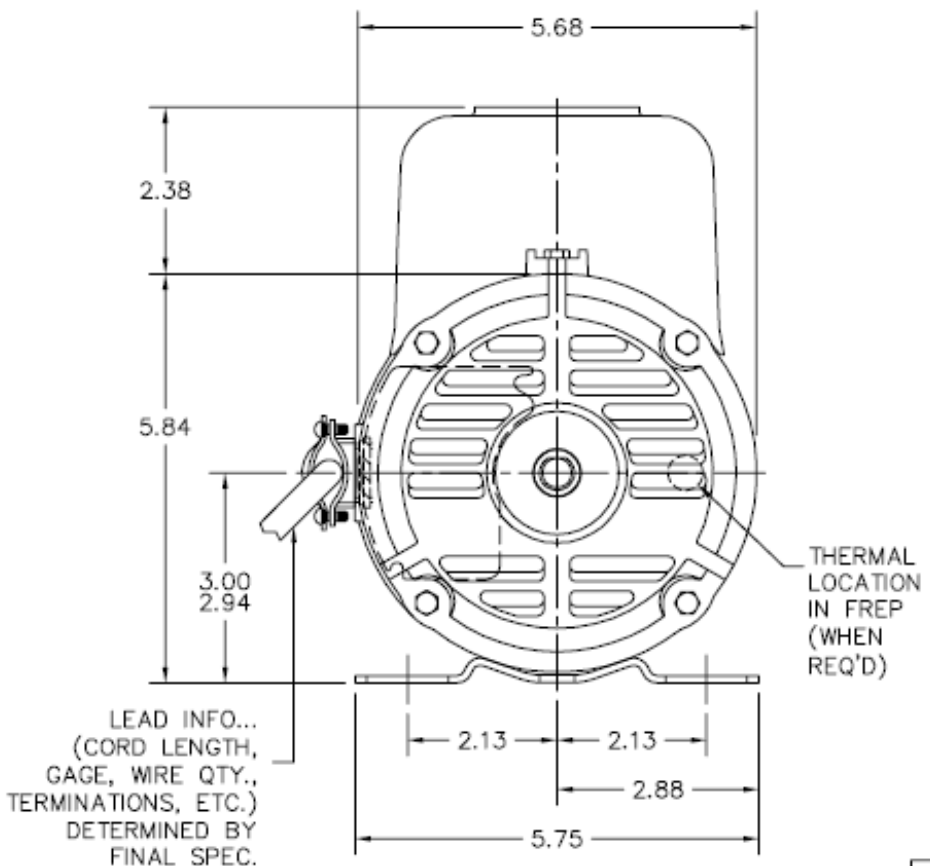
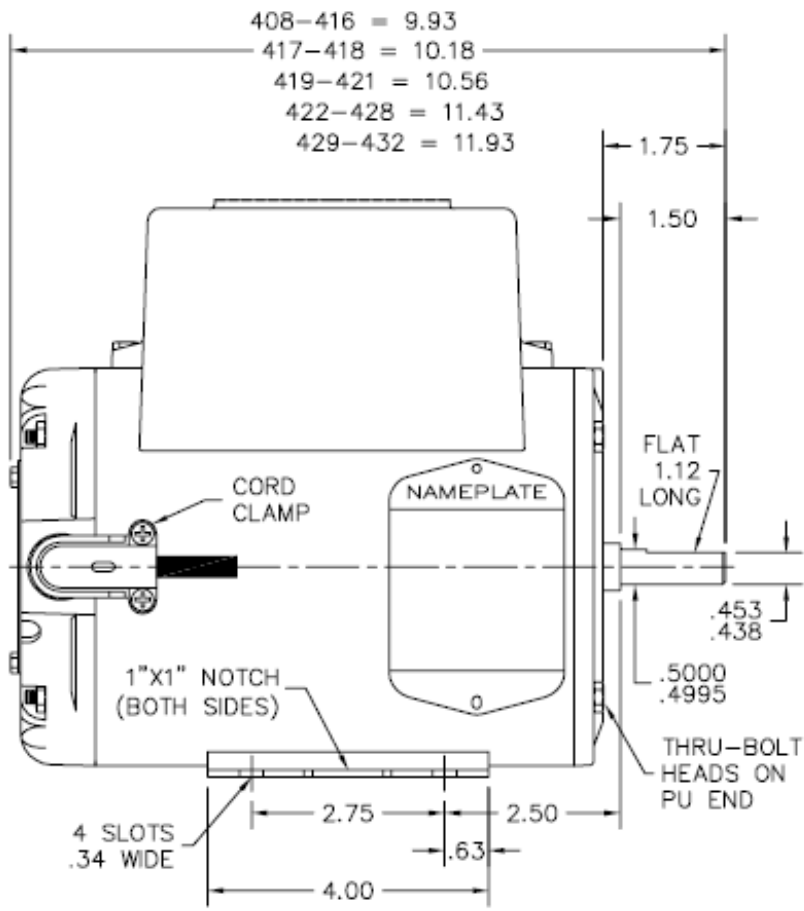
Enclosure: OPEN

Nameplate Data				General Characteristics at 115 V, 60 Hz: Single Volt Motor	
Rated Output (HP)	.33			Full Load Torque	1 LB-FT
Volts	115			Start Configuration	DOL
Full Load Amps	3.3			Break Down Torque	2.5 LB-FT
R.P.M.	1725			Pull-Up Torque	3.13 LB-FT
Hz	60	Phase	1	Locked-rotor Torque	3.64 LB-FT
NEMA Design Code	N	KVA Code	K	Starting Current	24.2 Amps
Service Factor	1.35			No-load Current	1.64 Amps
NEMA Nom. Eff.	72.4	P.F.	89	Line-line Res. @ 25°C.	2.22 Ohms A Ph 5.75 Ohms B Ph
Rating - Duty	40C AMB-CONT			Temp. Rise @ Rated Load	30°C
S.F. Amps	4.4			Temp. Rise @ S.F. Load	40°C

Load Characteristics at 115 Volts, 60 Hz

% of Rated Load	25	50	75	100	125	150	S.F.
Power Factor	67	79	86	90	92	93	92
Efficiency	44.1	62.5	69.5	72.2	72.7	70.6	71.9
Speed	1781	1767	1750	1732	1710	1680	1698
Line Amperes	1.81	2.18	2.69	3.31	3.99	4.9	4.35

34LYF840



BASE NOTCH DETAIL

NOTE:
 MOUNT LC BOX SO THAT "MK DIAMOND" IS READ FROM THE F1 (CORD) SIDE.

CUSTOMER IS RESPONSIBLE FOR DETERMINING THAT BALDOR'S PRODUCT WILL PERFORM SUITABLY IN THE INTENDED APPLICATION.

REV. DESC: REV TO BE LC		
REV. LTR: A	VERSION: 01	TDR: 000000943638
FILE: \AAA\00204\987	REVISED: 10:23:04 09/15/2015	BY: ENBENBO
MTL: -		

BALDOR

HORZ 34LC NEMA 48 OPEN, TERM PLATE, W/CORD & SPL BASE NOTCH
 SH 1 of 1

34LYF840

Product ID 34F840R365G1 Desc .33HP,1725RPM,1PH,60HZ,48,3414LC,OPEN,F1 Class Code CUS Matl Type FERT
ENG. 14LC 4P OPEN HOR 48 MTO (FREP)

Revision	-	Status	PRD/I	Chg #	943638	Proprietary	Yes
Elec Spec	34WGR365	Prod CFG	34WGR365-C001	Rating	34WGR365-R001	Mech Spec	34F840
Type	3414LC	Prod Type	AC MOTOR SA,WS,RA (S	CD Diagram	CD1048	Layout	34LYF840
Enclosure	OPEN	Mfg Plant	BALDOR/WESTVILLE	RoHS	Y		
Frame	48	Mounting	F1	Poles	04	Created Date	09/15/2015
Base	RG	Rotation	ROS	Insulation	B	Eff Date	12/31/9998
Leads	5#18					Replaced By	
HTS	8501.40.4040	Cnty Org		XP CL/GRP	NONE		

I N - W O R K

NAME PLATE	
NP1257L	
CAT.NO.	161672
SPEC.	34F840R365G1
HP	.33
VOLTS	115
AMP	3.3
RPM	1725
FRAME	48 HZ 60 PH 1
SER.F.	1.35 CODE K DES N CL B
NEMA-NOM-EFF	72.4 PF 89
RATING	40C AMB-CONT
CC	USABLE AT 208V
DE	6203 ODE 6203
ENCL	OPEN SN
	SFA 4.4

*** SINGLE LEVEL BOM ***

FND#	OBJECT #	RV	L	QUANTITY	UM	DESCRIPTION
0010	34WGR365-C001	-	L	1.000	EA	1,4,3414LC,M,CD104
0020	34WGR365-R001	-	L	1.000	EA	1,4,3414LC,M,CD030
0030	34F840	A	L	1.000	EA	OPEN RG 48 GP L N
0040	HW1025A10	C	L	2.000	EA	#10 BALANCE WASHER
0050	WD4500A02	F	L	1.000	EA	CORD CONN, - SIZE,
0060	ML6048C10	D	L	42.000	IN	14-3 SJEOOW/SJTOOW
0065	WD1000H04	F	L	1.000	EA	HOLL#R4161SFT,INSL
0070	WD1000A16	D	L	4.000	EA	2-520128-2 AMP FLA
0080	34EP3202A38	C	L	1.000	EA	ENDPLATE, MACH 34L
0090	NS2500A02	B	L	1.000	EA	INSULATOR, MAN TH
0100	HA6001A03	H	L	1.000	EA	THERMAL RETAINER (
0110	51XW0832A07	C	L	2.000	EA	8-32 X .44, TAPTIT
0120	BG6203C03	H	L	1.000	EA	6203 D.SH,C3,POLYR
0130	BG6203C03	H	L	1.000	EA	6203 D.SH,C3,POLYR
0140	MG1000G27	M	L	0.014	GA	MED CHARCOAL METAL
0150	10XF0440S02	B	L	2.000	EA	04-40 X 1/8 TYPE F
0160	34SB2589A00	-	L	1.000	EA	BAND ASSY, HORZ 34
0170	SP5090A09	D	L	1.000	EA	34L TP STAT SW PAN
0180	34SH7608TA01	-	L	1.000	EA	9.275L X .938D SHO
0180	DE0001A12	C	L	1.000	EA	TOP-BOT SW 200 EP

0200	HA3100A13	AD	L	4.000	EA	THRUBOLT 10-32 X 7
0210	LB1119N	-	L	1.000	EA	WARNING LABEL
0220	LB1087	E	L	1.000	EA	LABEL,MANUAL RESET
0230	LB1417	E	L	1.000	EA	LABEL CARTON 6X4 P
0240	LC0002	H	L	1.000	EA	CONNECTION LABEL
0260	NP1257L	K	L	1.000	EA	ALUM UL CSA CC THE
0270	34PA1005	J	L	1.000	EA	PKG GRP, PRINT

TypeOper # Text

SI 7550 *INTERNAL FAN SHOVE-ON = .59
7572

SI *THRU-BOLT HEADS TO BE ON PU END

SI *ATTACH GREEN GND LEAD FROM CORD TO
GND LOCATION IN PREP USING GREEN GND
SCREW 11XT0832G06.

SI ALL *OPTION G1: MTO (FR EP)

SI 9550 *OPTION G1: CONNECT CORD FOR OPP STD
ROTATION (CCW LOOKING AT SHAFT END)
PER SP0001A30

SI 3212 *OPTION G1: CORD TO BE 35" LONG FROM
4035 CORD CLAMP W/ CUSTOMER END STRIPPED
4141 5".
DO NOT STRIP INDIVIDUAL LEADS ON CUST
END.

SI *OPTION G1: STRIP MOTOR END OF CORD
3".
ATTACH RING TERMINAL (WD1000H04) TO
GREEN GND LEAD.

SI 4141 *OPTION G1: 90 DEG. CORD CLAMP TO FACE
9550 SHAFT END OF MOTOR (SEE LAYOUT)

SI *OPTION G1: PROPRIETARY PER CUSTOMER
REQUEST AND P/N

*** REVISION HISTORY ***

RV EFF DATE	REV DESCRIPTION	TDR #	INIT
- 12/31/9998	Material revised on 09/15/2015	943638	USGRHUR

*** End of Report ***

DATA SHEET



Single Phase Induction Motor - Squirrel Cage

Customer :				
Product line	: Rolled Steel Single-Phase			
Product code :	13039446			
Catalog # :	.33180T1B48-S			
Frame : 48 Output : 0.33 HP (0.25 kW) Poles : 4 Frequency : 60 Hz Rated voltage : 115/208-230 V Rated current : 4.12/2.32-2.06 A L. R. Amperes : 30.1/16.9-15.0 A LRC : 7.3x(Code M) No load current : 3.10/1.34-1.55 A Rated speed : 1745 rpm Slip : 3.06 % Rated torque : 0.993 ft.lb Locked rotor torque : 320 % Breakdown torque : 300 % Insulation class : F Service factor : 1.35 Moment of inertia (J) : 0.0439 sq.ft.lb Design : N	Locked rotor time : 30s (cold) 17s (hot) Temperature rise : 80 K Duty cycle : Cont.(S1) Ambient temperature : -20°C to +40°C Altitude : 1000 m.a.s.l. Cooling method : IC01 - ODP Mounting : F-1 Rotation ¹ : Both (CW and CCW) Noise level ² : 50.0 dB(A) Starting method : Direct On Line Approx. weight ³ : 19.5 lb			
Output	25% 50% 75% 100%			
Efficiency (%)	57.6 61.0 68.0 72.4			
Power Factor	0.30 0.53 0.67 0.73			
Foundation loads				
Max. traction	: 23 lb			
Max. compression	: 43 lb			
Bearing type	: <u>Drive end</u> 6203 ZZ <u>Non drive end</u> 6202 ZZ			
Sealing	: Without Bearing Seal Without Bearing Seal			
Lubrication interval	: -			
Lubricant amount	: -			
Lubricant type	: Mobil Polyrex EM			
Notes				
This revision replaces and cancel the previous one, which must be eliminated. (1) Looking the motor from the shaft end. (2) Measured at 1m and with tolerance of +3dB(A). (3) Approximate weight subject to changes after manufacturing process. (4) At 100% of full load.				
These are average values based on tests with sinusoidal power supply, subject to the tolerances stipulated in NEMA MG-1.				
Rev.	Changes Summary	Performed	Checked	Date
Performed by				
Checked by			Page	Revision
Date	03/01/2022		1 / 2	

LOAD PERFORMANCE CURVE

Single Phase Induction Motor - Squirrel Cage

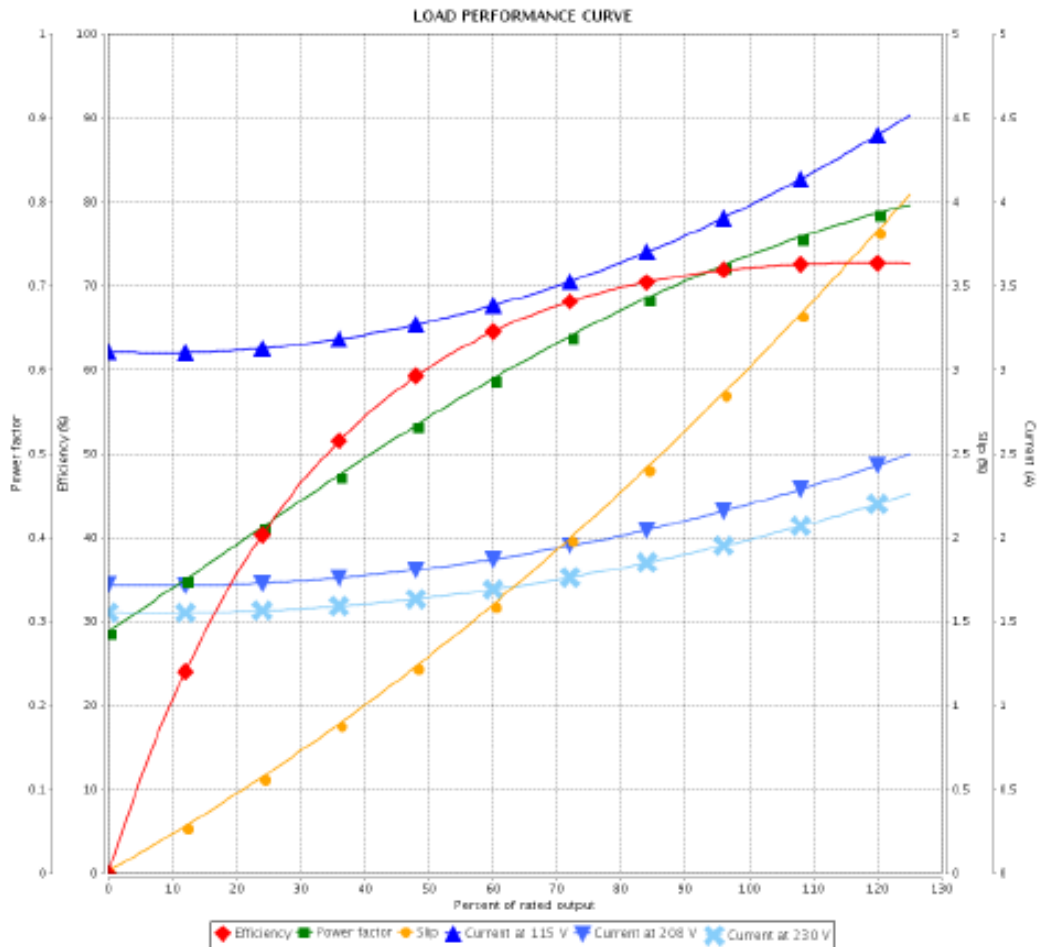


Customer : _____

Product line : Rolled Steel Single-Phase

Product code : 13039448

Catalog # : .3318OT1B48-S



Performance : 115/208-230 V 60 Hz 4P

Rated current : 4.12/2.32-2.08 A
 LRC : 7.3
 Rated torque : 0.993 ft.lb
 Locked rotor torque : 320 %
 Breakdown torque : 300 %
 Rated speed : 1745 rpm

Moment of inertia (J) : 0.0439 sq.ft.lb
 Duty cycle : Cont.(S1)
 Insulation class : F
 Service factor :
 Temperature rise : 80 K
 Design : N

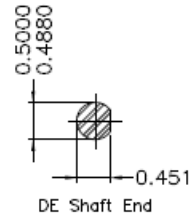
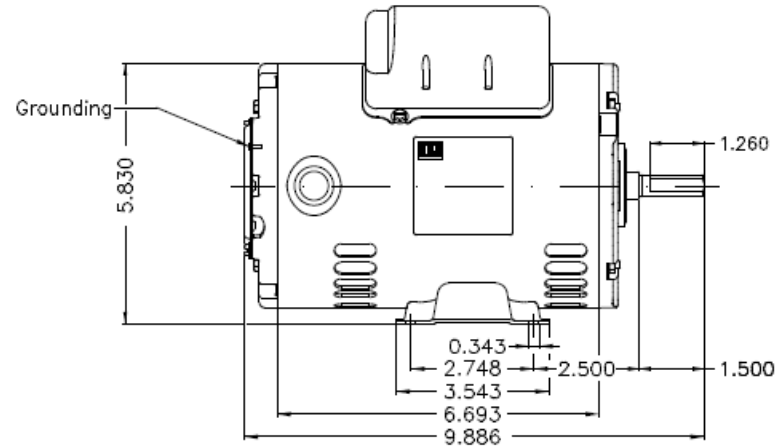
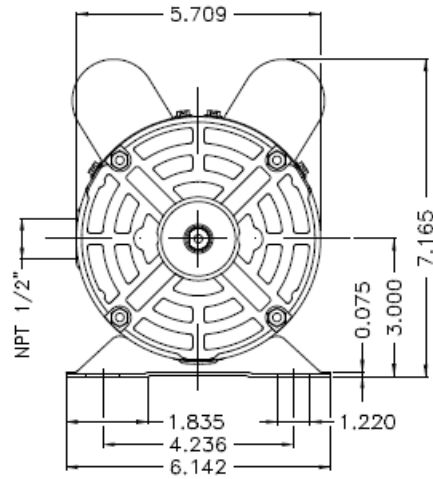
Rev.	Changes Summary	Performed	Checked	Date
Performed by			Page 2 / 2	Revision
Checked by				
Date	03/01/2022			

This document is exclusive property of WEG S/A. Reprinting is not allowed without written authorization of WEG S/A.
 Subject to change without notice

No reproduction of this drawing is allowed without written permission of WEG Motores

Dimensões em polegadas
Dimensions in inches

THIS IS AN UPDATED REVISION, THE PREVIOUS ONE MUST BE DISREGARDED.



Mounting F-1/B3R(D)

ECM	LOC	SUMMARY OF MODIFICATIONS	EXECUTED	CHECKED	RELEASED	DATE	VER
EXECUTED	USERADMIN	SINGLE P. MOTOR OPEN ROLLED STEEL PREM EFF					
CHECKED		FRAME 48 ODP					
RELEASED		WEG codet 13019448					
REL DT	03.01.2022	WMO Jaraguá do Sul	Product Engineering	SHEET	1 / 1		

0.33 HP 04 Poles 60Hz





NEMA
Premium



MADE IN MEXICO
13039446

MODEL 33180T1B48-S
W01.M001C0X0X

PH1	Hz 60	FR 48	ALT 1000 m.a.s.l	ENCL ODP
V	115/230		A	4.12/2.06
HP	0.33		kW	0.25
SF	1.35		SFA	5.68/2.84
RPM	1745		PF	0.73
AMB	40°C		INS CL F AT 80K	AVG. FL. EFF. 72.4%
DUTY CONT.			DES N CODE M	

USABLE @ 208V 2.32A SF1.00

Electric Motor

DE 6203-ZZ
ODE 6202-ZZ

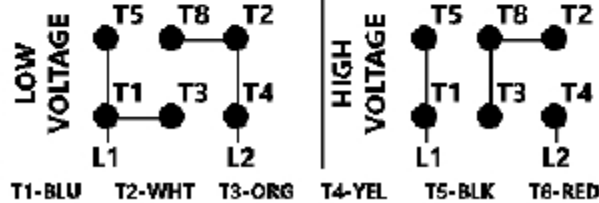
MOBIL POLYREX EM



WARNING: Motor must be grounded in accordance with local and national electrical codes to prevent serious electrical shocks. Disconnect power source before servicing unit.

AVERTISSEMENT: Le moteur doit être mis à la terre conformément aux codes électriques locaux nationaux afin d'éviter tout choc électrique grave. Déconnectez l'alimentation avant l'entretien de la machine.

REVERSE ROTATION INVERT T5 AND T8



15JUN2021

B/N: