

MK Diamond Products, Inc.
 1315 Storm Parkway
 Torrance, CA 90509-2803

SPECIFICATION SHEET			Date 6/24/16
MK Part Number 154633	MK Description MTR, 20 AMP MIL W/PIN 4094	Revision -	
Manufacturer P/N MIL-4094	Manufacturer/Vendor Description DIAMOND CORING MOTOR 450/900 RPM, 20 AMP W/ PIN		
Manufacturer Information MILWAUKEE ELECTRIC TOOL	Vendor Information	Alternate Manufacturer	

Specifications:



FEATURES

- Two speeds: 450 and 900 rpm
- 20 amp motor
- Shear pin protection protects gears and motor
- Built-in water swivel

SPECIFICATIONS

- Weight 24.0 lbs
- Voltage 120V
- Tool Warranty 5 Years
- No Load RPM 450-900
- Amps 20
- Spindle 1-1/4"-7
- Max HP 4.8
- Motor Protection Shear Pin
- Plug Type L5-20P
- Suggested Dia in Med Aggregate 6"-10" / 2"-6"

Rev	Description	Date	Approved
-	INITIAL RELEASE	-	-
-	CREATED SPEC SHEET, ECO# 2280	6/24/16	SSH



SERVICE PARTS LIST

BULLETIN NO.
54-16-4042

SPECIFY CATALOG NO. AND SERIAL NO. WHEN ORDERING PARTS		REVISED BULLETIN	DATE
TWO SPEED DYMODRILL		54-16-4041	Mar. 2008
CATALOG NO.	4094	STARTING SERIAL NO.	740B
		WIRING INSTRUCTION	58-01-0930

EXAMPLE:
Component Parts (Small #)
Are Included When Ordering
The Assembly (Large #).

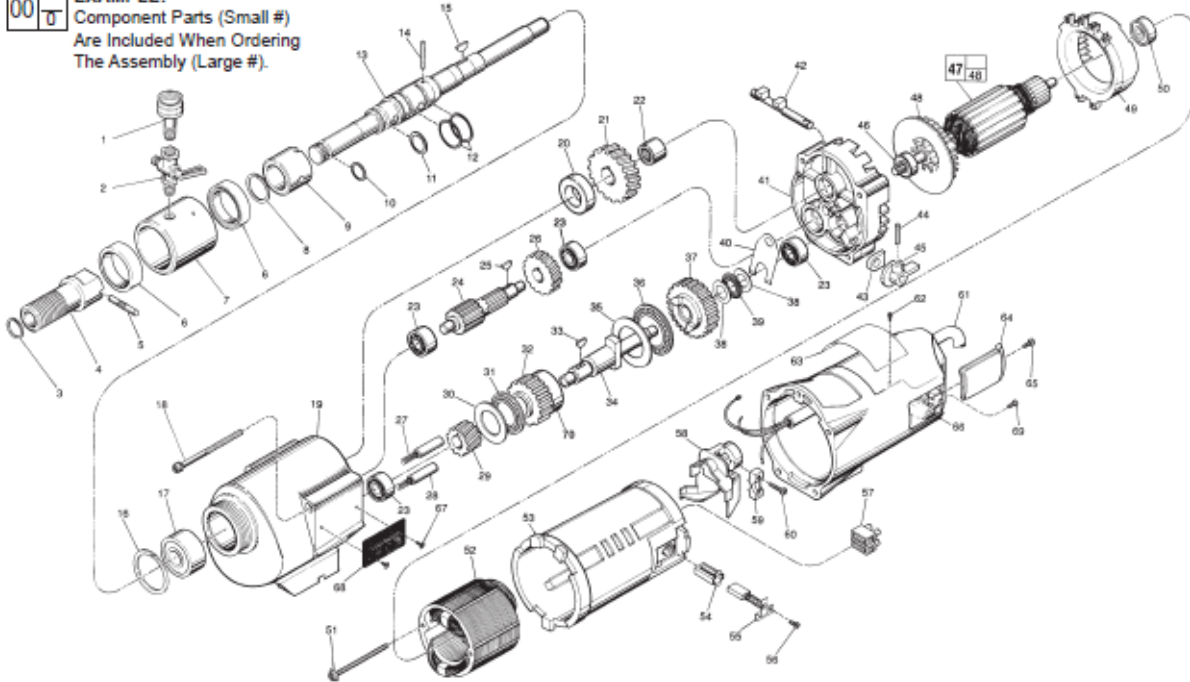


FIG.	PART NO.	DESCRIPTION OF PART	NO. REQ.	FIG.	PART NO.	DESCRIPTION OF PART	NO. REQ.
1	42-04-0800	Water Hose Adapter	(1)	44	06-65-0840	1/8 x 3/4" Groove Pin	(1)
2	45-80-0080	Shut Off Valve	(1)	45	25-80-0058	Shifting Knob	(1)
3	34-80-1800	Retaining Ring	(1)	46	02-04-1229	Ball Bearing	(1)
4	45-22-0050	Spindle Sleeve	(1)	47	16-70-0320	120 V Armature	(1)
5	44-80-0032	Shear Pin	(1)	48	22-84-0790	Fan	(1)
6	45-06-0050	Trostel Seal	(2)	49	42-14-0291	Baffle	(1)
7	43-78-0051	Water Swivel Hsg Incl 06-83-2430 Scr	(1)	50	02-04-1041	Ball Bearing	(1)
8	34-80-2115	Retaining Ring	(1)	51	06-82-9152	10-24 x 2-3/4" Pan Hd. Sem. T-25	(2)
9	42-40-0830	Spindle Bushing	(1)	52	18-70-0290	120 V. Field	(1)
10	34-40-1100	O-Ring	(1)	53	23-16-1410	Motor Insulator	(1)
11	34-40-1200	O-Ring	(1)	54	22-20-0680	Brush Tube	(2)
12	34-40-1350	O-Ring	(2)	55	22-18-0702	Carbon Brush Assembly	(2)
13	38-50-4555	Spindle	(1)	56	06-82-8835	8-32 x 5/16" Pan Hd. Sem.T-20	(2)
14	06-65-1530	1/8 x 1/2" Roll Pin	(1)	57	22-56-0470	Terminal Block	(1)
15	06-42-2400	Woodruff Key	(1)	58	22-38-0140	Wire Trap	(1)
16	34-80-3800	Retaining Ring	(1)	59	31-17-0200	Cord Clamp	(1)
17	02-20-2515	Ball Bearing	(1)	60	06-82-7326	8-16 x 1" Pan Hd. Plastite T-20	(2)
18	06-82-9202	1/4-20 x 4-1/4" Taptite T-30	(4)	61	22-64-0300	Cord Set	(1)
19	28-14-1870	Gear Case Assy. Incl 06-65-1535 Pin	(1)	62	06-72-1720	Service Rivet	(2)
20	45-38-1245	Spindle Spacer	(1)	63	12-99-1875	Service Nameplate	(1)
21	32-75-2521	Spindle Gear	(1)	64	22-32-0350	Brush Cover	(2)
22	02-50-4830	Needle Bearing	(1)	65	06-82-5318	8-32 x 1/2" Pan Hd. Sit. Taptite T-20	(2)
23	02-04-1205	Ball Bearing	(4)	66	28-50-6380	Motor Housing	(1)
24	36-86-3751	Pinion Shaft Assy.	(1)	67	06-82-5286	4-40 x 1/4" Pan Hd. Taptite T-10	(2)
25	06-42-1600	Woodruff Key	(1)	68	12-98-2100	Instruction Plate	(1)
26	32-40-1581	Intermediate Gear	(1)	69	06-95-5200	8-32 x 5/16" Slotted Hex Hd. Screw	(1)
27	40-50-6300	Shifting Spring	(2)	70	45-38-0225	Gear Spacer	(1)
28	44-70-0100	Shifting Plunger	(2)		49-98-4700	1-3/8" Open End Wrench	(1)
29	32-80-1041	Pinion Gear	(1)		45-88-0800	Water Hose Washer (For Fig. No. 1)	(1)
30	45-88-0520	Thrust Bearing Washer	(1)		61-30-0060	Water Seal Jig	(1)
31	02-80-1800	Thrust Bearing	(1)				
32	32-10-0080	Clutch Gear Assembly	(1)				
33	06-42-2000	Woodruff Key	(1)				
34	36-14-0061	Clutch Shaft	(1)				
35	45-88-0530	Thrust Bearing Washer	(1)				
36	02-80-5000	Thrust Bearing	(1)				
37	32-10-0051	Clutch Gear Assembly	(1)				
38	45-88-0510	Thrust Bearing Washer	(2)				
39	02-80-1200	Thrust Bearing	(1)				
40	45-98-0090	Shifting Yoke	(1)				
41	14-13-0210	Diaphragm Assy.(Inc. 06-65-1155 Pin)	(1)				
42	30-15-0272	Shift Cam	(1)				
43	43-44-0580	Foam Gasket	(2)				

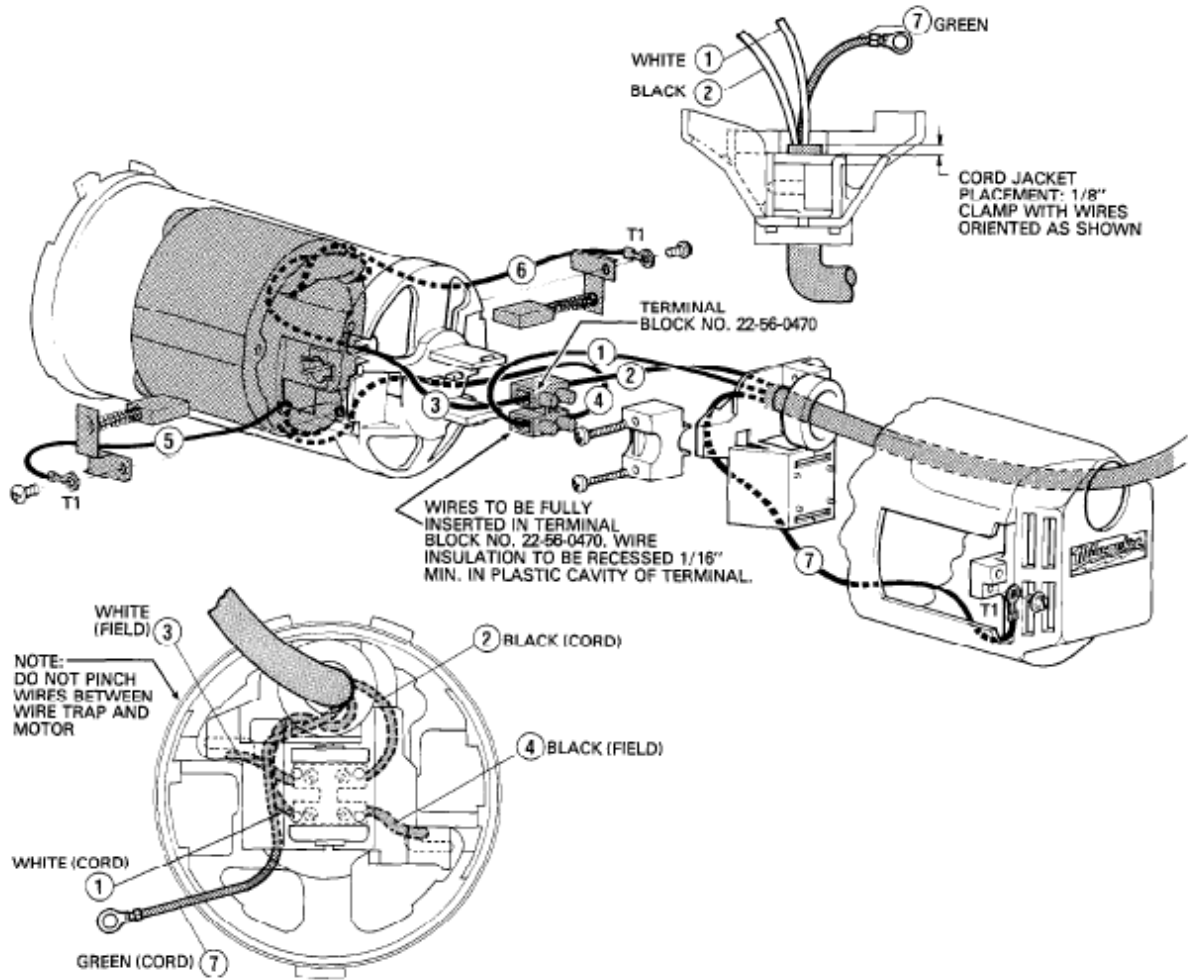
FOR MOUNTING DRILL MOTOR USE:
06-75-3090 1/4-20 x 7/8" Socket Hd. Screw (4)
06-97-4050 1/4" Split Ring Lock Washer (4)

FIG. LUBRICATION
19 20 Oz. Type "J" Grease, No. 49-08-4220.

MILWAUKEE ELECTRIC TOOL CORPORATION
13135 W. LISBON RD., BROOKFIELD, WI 53005
Drwg. 2

WIRING INSTRUCTIONS

TITLE 120 VOLT DYMODRILL MILWAUKEE ELECTRIC TOOL CORP. 13135 WEST LISBON RD. BROOKFIELD, WIS.	DATE March '88	BULLETIN 58-01-0930
--------------------------------------------------------------------------------------------------------------------------	--------------------------	--------------------------------------



WIRING SPECIFICATIONS				
Wire No.	Wire Color	Origin or Gauge	Length	Terminals, Connectors and 1 or 2 End Wire Preparation
1	WHITE	CORD	2-3/4"	STRIP 1/4" AND TIN
2	BLACK	CORD	2-1/4"	STRIP 1/4" AND TIN
3	WHITE	FIELD	-----	STRIP 1/4" AND TIN
4	BLACK	FIELD	-----	STRIP 1/4" AND TIN
5	WHITE	FIELD	-----	STRIP 3/16" FOR T1
6	WHITE	FIELD	-----	STRIP 3/16" FOR T1
7	GREEN	CORD	-----	STRIP 3/16" FOR T1

NOTE:
 All leads must be held to $\pm 1/8"$.
 All field leads to be measured from and perpendicular to laminations.
 All lead lengths are before stripping.

TERMINAL DESCRIPTION		
Code	Part No.	Qty.
T1	23-74-0840	3

CONNECTOR DESCRIPTION		
Code	Part No.	Qty.