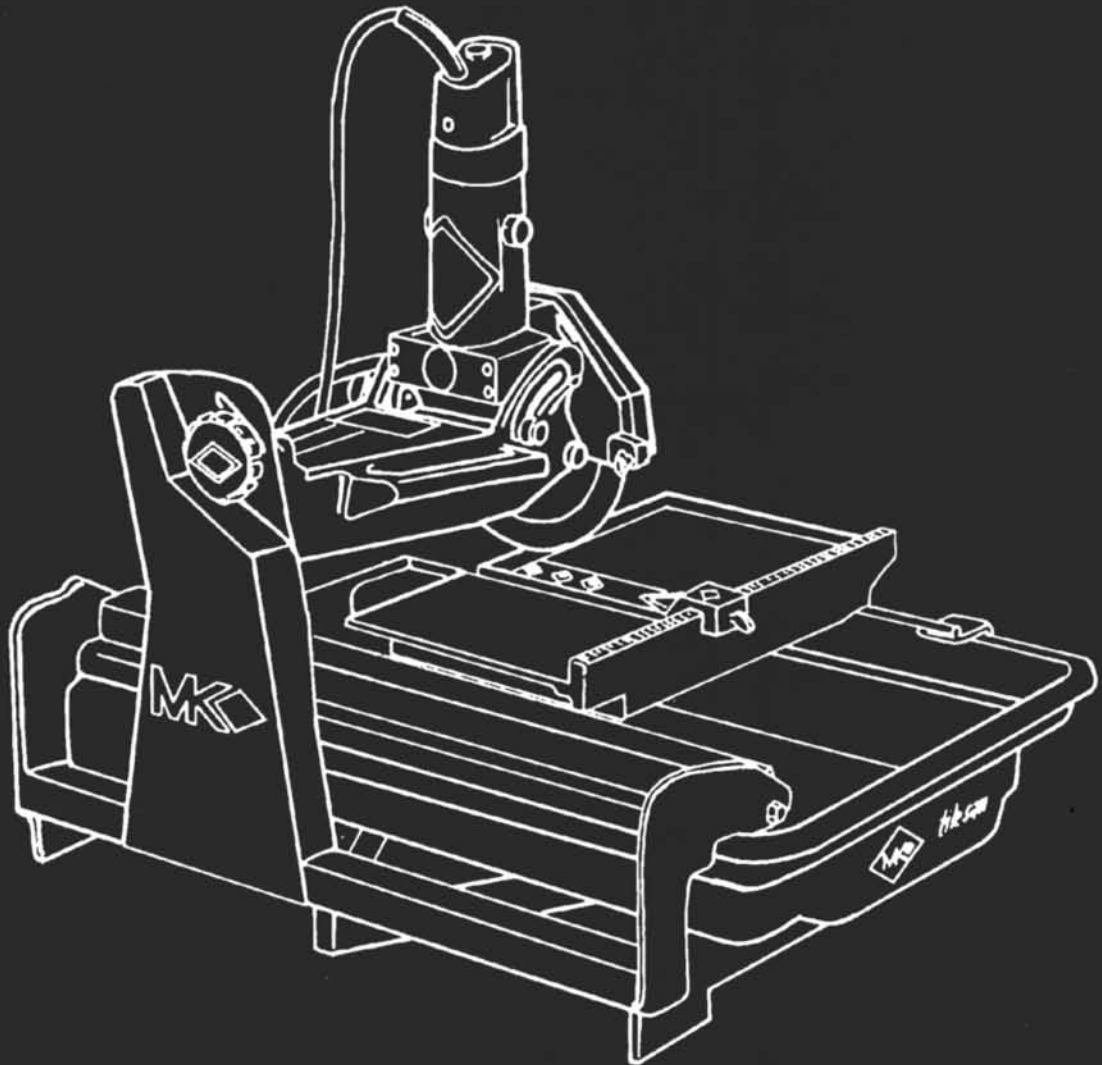
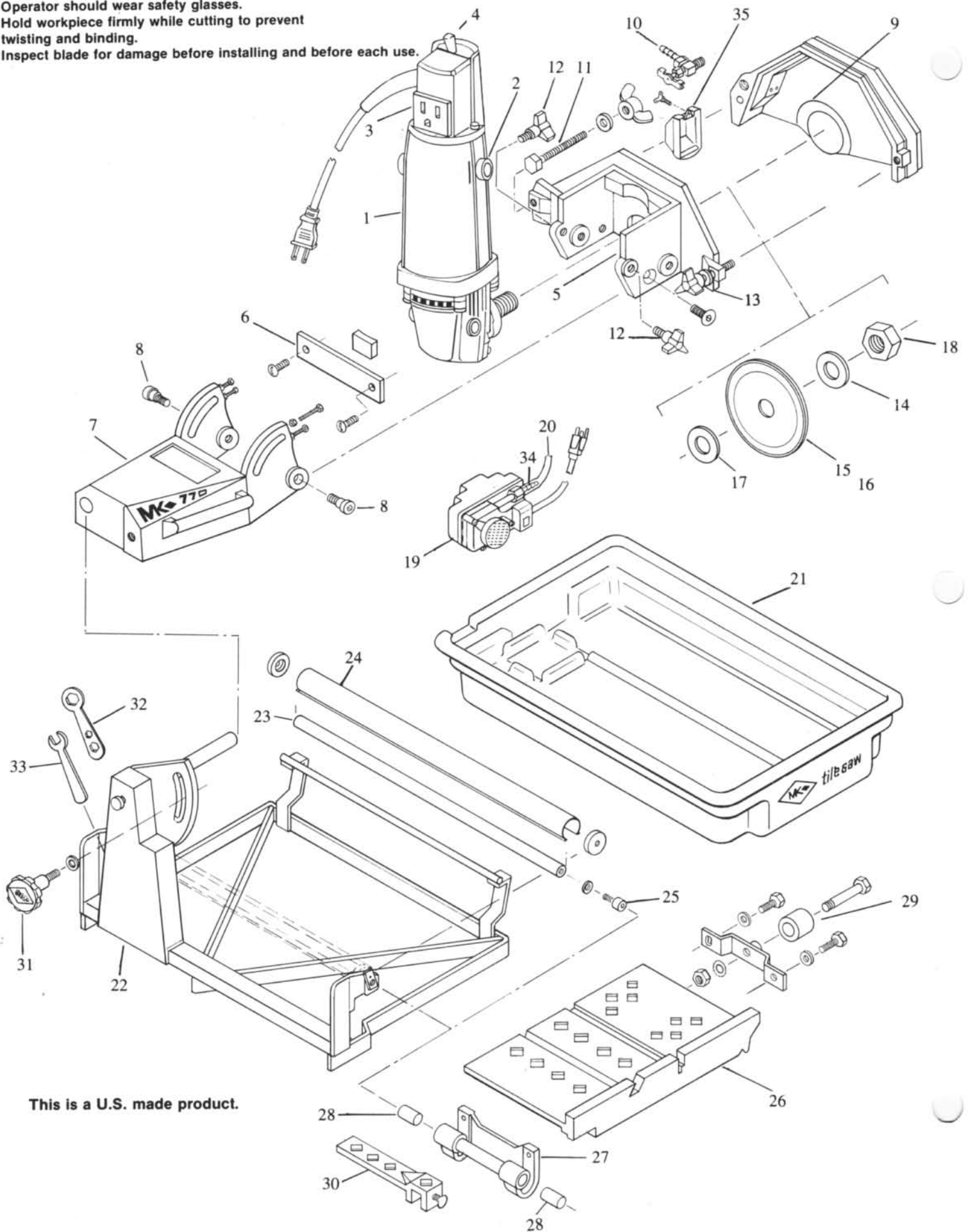


Model MK 770 Tile Saw Parts List and Operating instructions



SAFETY PRECAUTIONS

1. Never operate Saw without Blade Guard.
2. Operator should wear safety glasses.
3. Hold workpiece firmly while cutting to prevent twisting and binding.
4. Inspect blade for damage before installing and before each use.



This is a U.S. made product.

PARTS LIST

ITEM	DESCRIPTION	PART NO.
1	Motor	151366
2	Motor Brush (set of 2)	151774
3	Water Pump Receptacle	151775
4	Motor Switch with Cover	151776
5	Motor Mount Casting	151732
6	Motor Mounting Bracket	151777
7	Cutting Head Casting	151733
8	Motor Mounting Shoulder Bolts 1/2 x 1/2 (2 required)	151753
9	Blade Guard Casting	151731
10	Water Control Valve	151741
11	Blade Guard Bolt with Nut	151806
12	Davies Knobs (2 Required)	151681
13	Cutting Head Shoulder Bolt 5/16 x 5/8	152137
14	Inner Flange	151778
15	Wet Cutting Blade - MK 200 - 7" (Tile)	139295
16	General Purpose Blade - MK 925 7" (Masonry)	150669
17	Outer Flange	151779
18	Blade Shaft Nut	151780
19	Water Pump	151811
20	Water Supply Hose (2 ft. Required)	132951
21	Plastic Water Pan	151736
22	Frame Assembly	151722
23	Guide Bar	151739
24	Guide Bar Cover Assembly	151801
25	Guide Bar Bolt (2 Required)	151743
26	Conveyor Cart	151738
27	Guide Bar Casting	151737
28	Guide Bar Casting Bushing (2 Required)	151781
29	Wheel Bracket Assembly	151756
30	Rip Guide	134551
31	Height Adjustment Knob	137786
32	Blade Shaft Wrench	134684
33	Motor Shaft Wrench	151773
34	Water Pump Hose Adaptor	128397
35	Splash Shield Assembly	151393

WARRANTY

MK Diamond Products, Inc. warrants all products manufactured by it against defects in workmanship or materials for one (1) year from date of shipment to customer. The responsibility of MK Diamond Products, Inc. under this warranty is limited to replacement or repair of defective parts at the MK factory in Hawthorne, California. In no event shall MK Diamond Products, Inc. be liable for consequential damages arising out of the failure of any product to operate properly. Integral parts such as motors, are excluded from this warranty and are subject to the manufacturer's warranty. This warranty is in lieu of all other warranties expressed or implied.

**CONGRATULATIONS! Your selection of the MK 770 Tile Saw is a sound business decision.
MK Diamond equipment is the result of quality engineering and tested designs.**

OPERATING INSTRUCTIONS

ASSEMBLY

1. Before using your new MK-770 Tile Saw, examine it carefully for any damage in transit. Install a blade and check to see that it tracks in the center of the slot in the conveyor cart. Move the cart front to back to be sure it moves freely. Note: conveyor cart alignment has been set at the factory and should need no further adjustment. Refer to number 8 if adjustment is needed.

2. Select a blade which is the correct specification for the material being cut. For best results always use MK Diamond Products blades which have been specially designed to give fast, smooth, chip-free cutting and long life.

3. After installing the blade, loosen the fluted height adjustment knob (Item 28) and adjust the cutting head so that the blade rim is at least 1/4" below the surface of the conveyor cart. Tighten the knob to hold the head in place. Note: Setting the blade too shallow will cause it to grab and damage the tile and possibly the machine.

4. ELECTRICAL

Before connecting the saw to the power supply, check voltage and phase shown on the motor nameplate. Be sure they are the same as the power supply. Your supply circuit should be 115 volts, 60Hz., 20 amps; protected by 20 amp circuit breaker. (If a generator is necessary, use 3000KW minimum.) Power supply must be the grounding type and you must use 3 conductor extension cords with 3 prong grounding plugs and receptacles. When using extension cords, use the following rule for size:

WIRE GAUGE	115 VOLTS
#14 wire	25 feet

If you use smaller wire than indicated above, you will have a reduction in voltage at the motor which may cause overheating and possible damage to the motor. We recommend you use only UL listed cords.

5. WATER PAN

The Plastic Water Pan (Item 18) is made of durable high impact ABS plastic for a dent and rust free finish and easy cleanup. The pan may be removed from the saw by sliding it out through the front of the frame. Cleaning after each use is recommended.

6. WATER SYSTEM

Water supply should be adequate with water flowing to both sides of the blade. Be sure to keep recirculating Water Pump clean: do not allow sediment to cake in the pump and clog it. Water level in plastic pan should always be above pump intake. Water pumps have thermal overload protection and sealed bearings which require no lubrication. If pump is not working, be certain the pump pig-tail is properly connected to the Pump Receptacle on the Saw Motor. Cold weather and low voltage may cause pump not to function perfectly until it is broken in. In any case, a slight turn of the impellor should be sufficient to keep the pump working smoothly.

7. BLADE AND SHAFT ASSEMBLY

Use the tile saw wrench to tighten blade shaft nut securely. When tightening the blade shaft nut against the outside blade shaft collar, be sure to tighten enough to hold blade firmly without slipping on shaft, but do NOT overtighten. Before mounting blade on saw, the blade should be inspected for damage caused by previous use or damage in shipment.

8. CONVEYOR CART ADJUSTMENT

The MK 770 features an exclusive conveyor cart Guide Bar which allows the conveyor cart to track with maximum accuracy, assuring a precision cut at all times. If it is necessary to adjust the alignment between conveyor cart and the blade shaft, proceed as follows: Loosen guide bar retaining bolts (Item 22) and move guide bar (Item 20) as necessary to center blade into the slot in the conveyor cart. Check for squareness between the blade and ruled back stop of conveyor cart. (Use an accurate square for this). Adjust guide bar back and forth in the slots until squareness is achieved and then tighten support bolts (Do Not Over Tighten). Be sure guide bar does not move during tightening. After support bolts are tight, check again for centering of the blade and squareness of blade to conveyor cart. Squareness of the blade to the top of the conveyor cart may be adjusted by loosening retaining bolts of adjustment bracket (Item 26) and raising or lowering the bracket to achieve squareness between the conveyor cart and the blade. Retighten the bolts after adjustment.

9. 45 DEGREE BEVEL CUTS

The cutting head pivots to 45° for beveled cuts and is controlled with two conveniently located friction lock-knobs on the motor mount casting. **No accessories are necessary to make perfect bevel cuts every time with the MK-770, and you can see exactly where the blade is cutting at all times.**

SAFETY PRECAUTIONS

- Before mounting blade on saw, the blade should be inspected for damage caused by previous use, or damage during shipment.
- When tightening blade shaft nut be sure to tighten enough to hold blade firmly without slipping on shaft; but do not overtighten.
- Adequate coolant must be used with all wet cutting diamond blades.
- NEVER operate saw without blade guard.
- During cutting, the workpiece must be held firmly to prevent twisting/binding.
- Saw operator should wear safety glasses.

DISTRIBUTED BY:



MK DIAMOND PRODUCTS, INC.
1315 Storm Parkway
Torrance, CA 90509-2803
Telephone: 1 (310) 539-5221
US WATS 1 (800) 421-5830 FAX 1 (310) 539-5158