

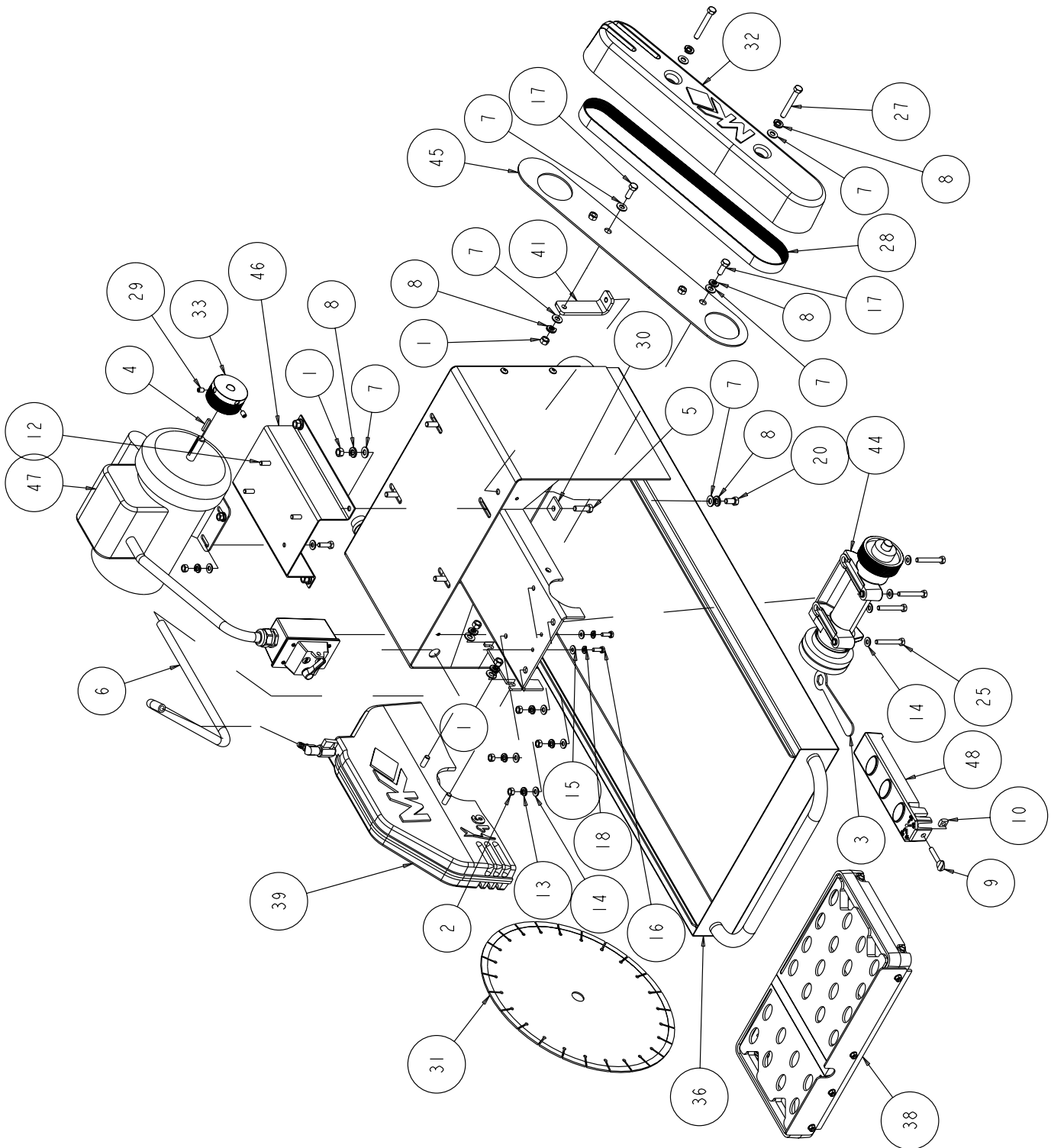
**MK-1280 ELECTRIC SERIES  
BRICK/PAVER SAW  
OWNERS MANUAL &  
PART LIST**



Revision 100	10.2010
Manual Part No. 168786	

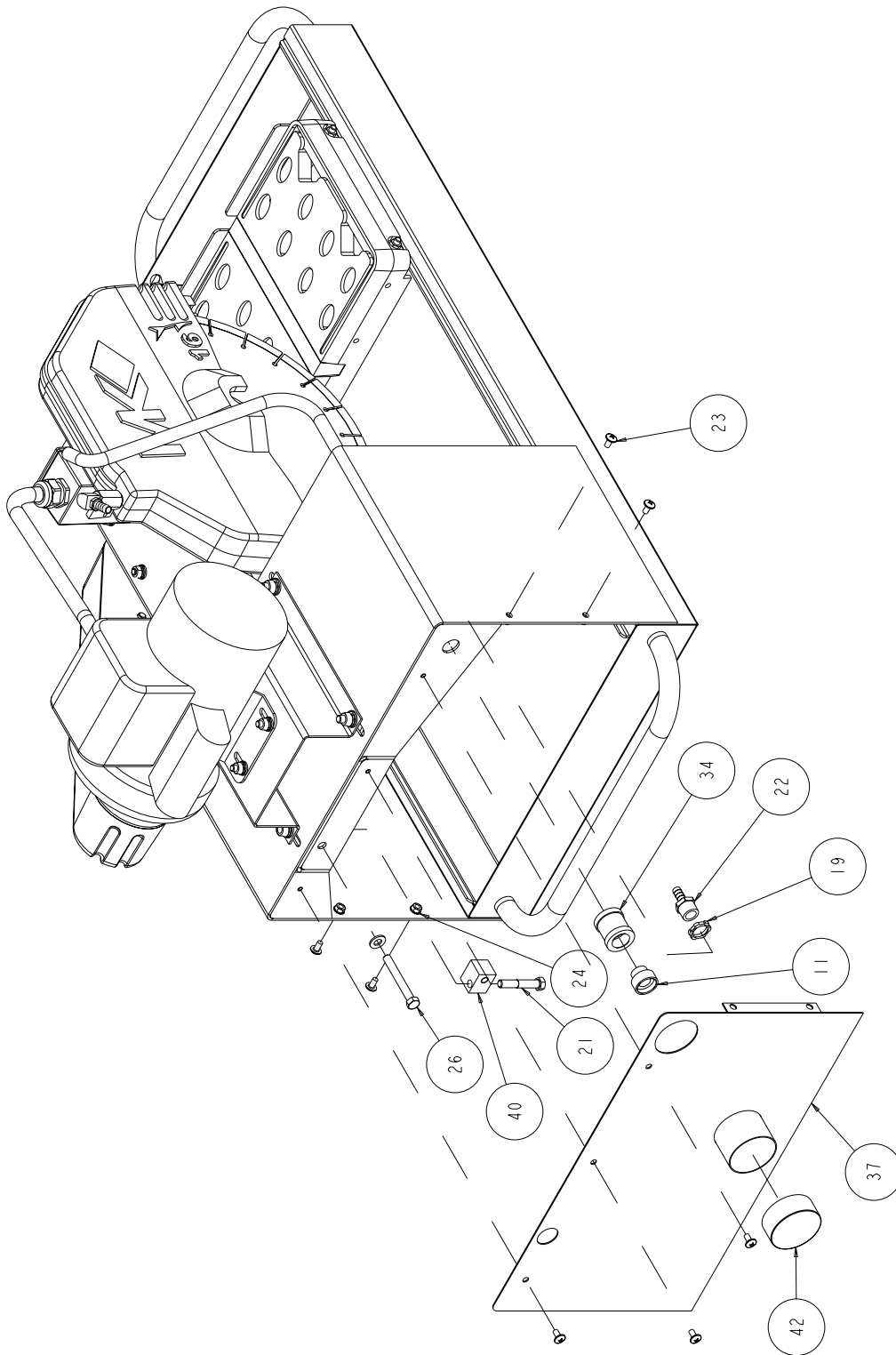
**Caution:** Read all safety and operating instructions before using this equipment. This owners manual **MUST** accompany the equipment at all times.

FIGURE 1 - MK-1280 PAVER SAW - P/N 167492



ITEM	DESCRIPTION	PART#	QTY
1	NUT, 3/8 16 HEX	101188	7
2	NUT, HEX, 5/16 - 18	101196	8
3	WRENCH, 3/4 BOX END	134056	1
4	KEY, 3/16 SQ X 1-1/8	150344	1
5	SCREW, 3/8 - 16 X 1 - 1/4 HEX HEAD CAP	150774	3
6	HOSE, WATER VINYL 3/8 X 1/2, 30"	150845_18	1
7	WASHER, 3/8 SAE FLAT	150923	13
8	WASHER, 3/8 SPLIT LOCK	150925	11
9	SCREW, THUMB 5/16 - 18 X 1 - 1/2	151155	1
10	NUT, SQUARE 5/16 - 18	151156	1
11	FITTING, 1/2 MNPT X 3/4 FNH	151322	1
12	SCREW, HEX HD, 5/16 - 18 X 1	151743	4
13	WASHER, LOCK, SPLIT, 5/16	151747	4
14	WASHER, FLAT, SAE, 5/16	151754	8
15	WASHER, 1/4 SAE, FLAT	151915	4
16	SCREW, HEX HD, 1/4 - 20 X 3/4	152370	2
17	SCREW, HEX HD CAP, 3/8 - 16 X 1	152507	2
18	WASHER, 1/4 SPLIT LOCK	152591	2
19	NUT, LOCK STEEL 1/2" NPT	152729	1
20	SCREW, HEX, 3/8 - 16 X 3/4	153527	1
21	SCREW, 3/8 - 16 X 2 - 1/4 HEX HEAD	153529	1
22	FITTING, 1/2 MNPT X 3/8 BARB	153653	1
23	SCREW, 1/4 - 20 X 1/2 TRUSS HEAD	153880	7
24	NUT, HEX W/WSHR, 1/4 - 20	153941	4
25	SCREW, HEX, 5/16 - 18 X 2 - 1/4	153951	4
26	BOLT, HEX HEAD TAP, 3/8 - 16 X 3	155830	1
27	SCREW, HEX HD CAP, 3/8 - 16 X 2 - 3/4	156774	2
28	BELT, 10K430	156837	1
29	SCREW, 5/16 - 18 X 3/8 SOCKET HEAD SET	157084	2
30	WASHER, SQR, 7/16 X 1 - 1/4 X 3/16	157567	3
31	BLADE, MK-414PBSL 16 X 125 X 1	160765	1
32	BELT GUARD, OUTER, ARBOR, COMP	160888	1
33	PULLEY, 10J28 X 5/8 BORE	160949	1
34	FITTING, 1/2 NPT COUPLER	164208	1
35	MASONRY LABEL SHEET (NOT SHOWN)	166011	1
36	FRAME, MAIN MK-1280	166555	1
37	BACKSPLASH, MK-1280	166576	1
38	ASSY, TABLE, MK-1280	166577	1
39	ASSY, BLADE GUARD, 16", MK-1280	166581	1
40	GUIDE, TENSION	167750	1
41	BRACKET, BELT GUARD	167763	1
42	CAP, VACUUM	167777	1

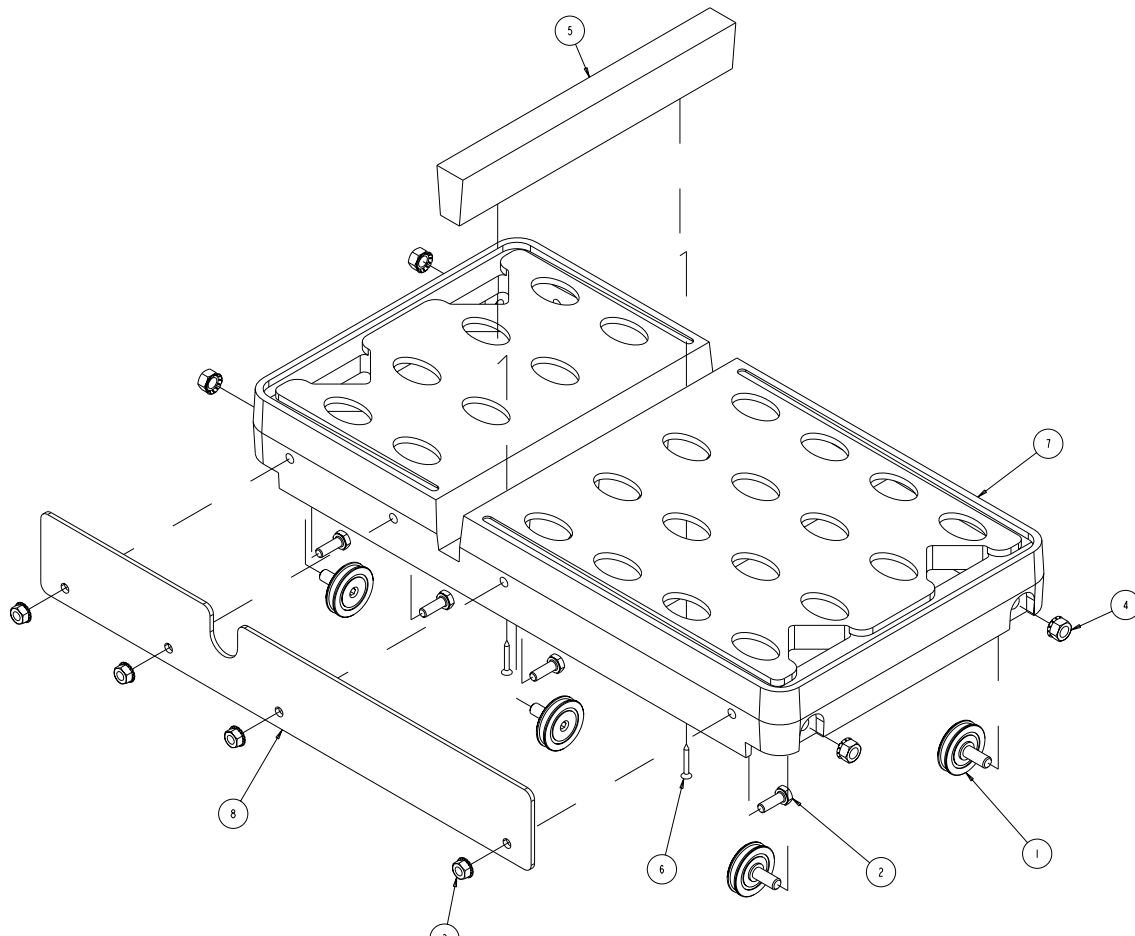
FIGURE 2 - MK-1280 PAVER SAW - P/N 166561



**FIGURE 2 - MK-1280 PAVER SAW - P/N 166561**

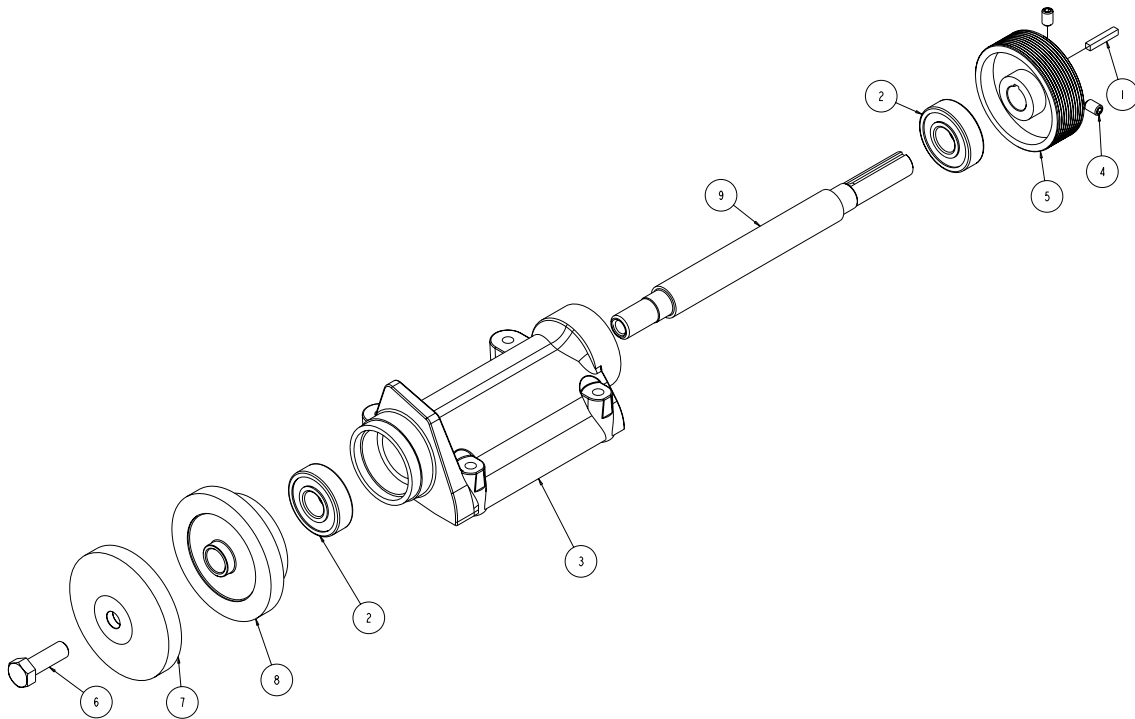
ITEM	DESCRIPTION	PART#	QTY
43	OWNERS MANUAL, MK-1280	168786	1
44	ASSY, ARBOR, ELEC 1280	168712	1
45	GUARD, BELT, INNER	168713	1
46	MOUNT, MOTOR, ELEC 1280	168714	1
47	MTR, 2HP 115/230V 60 HZ	231095	1
48	CASTING, SQUARING ARM-COMP	231276	1

FIGURE 3 - ASSY, TABLE - P/N 166577



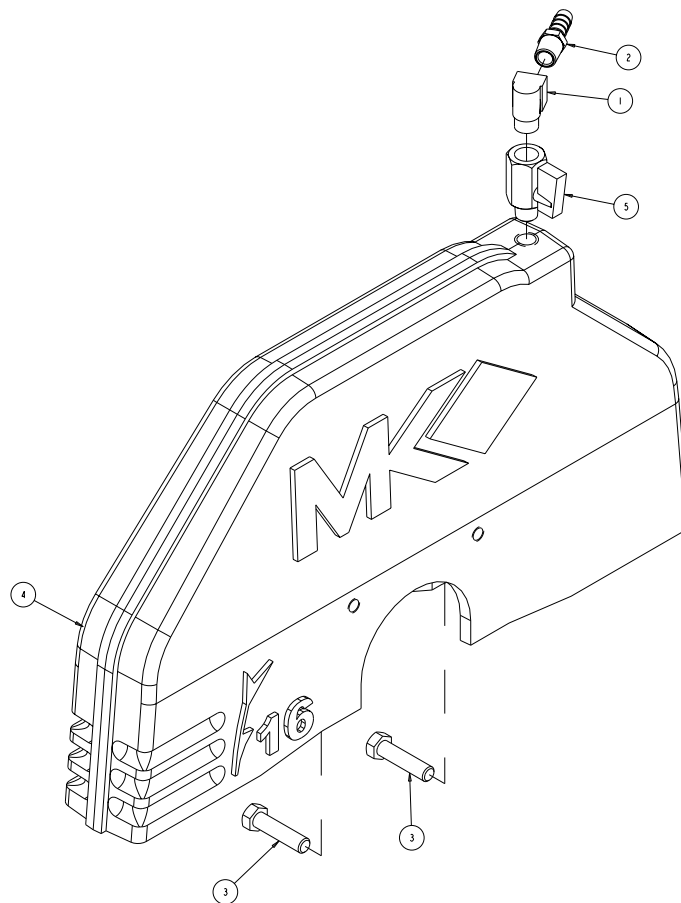
ITEM	DESCRIPTION	PART#	QTY
1	WHEEL, CONVEYOR CART	133090	4
2	SCREW, HEX HD, 1/4 - 20 X 3/4	152370	4
3	NUT, HEX W/WSHR, 1/4 - 20	153941	4
4	NUT, HEX, TW, 5/16 - 18	153942	4
5	WOOD STRIP, TABLE INSERT	158283	1
6	SCREW, DRYWL, FLAT HD, #6X1	159906	2
7	CASTING, TABLE, MK-1280	165398	1
8	BACKSTOP, TABLE	166584	1

FIGURE 4 - ASSY, ARBOR - P/N 166579



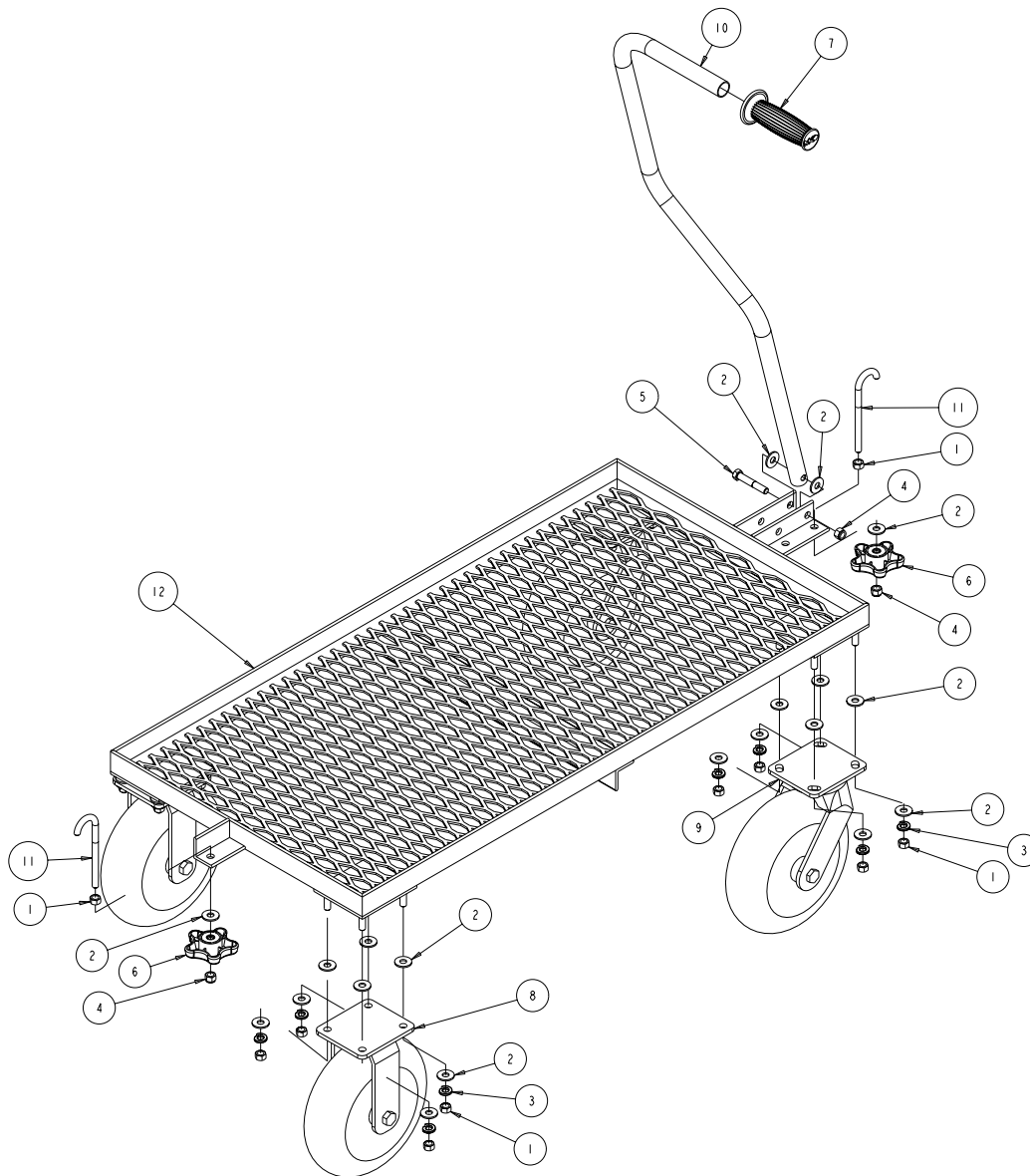
ITEM	DESCRIPTION	PART#	QTY
1	KEY, 3/16 SQ X 1 - 1/8	150344	1
2	BEARING, ARBOR HOUSING	154594	2
3	CASTING, 2000/5000 ARBPR - COMP	154637	1
4	SCREW, 5/16 - 18 X 3/8 SOCKET HEAD SET	157084	2
5	PULLEY, 10J28 X 5/8 BORE	157466	1
6	SCREW, 1/2 - 13 X 1-1/12 HEX HEAD, LEFT HAND	160818	1
7	FLANGE, OUTER, MASONRY, 4"	161304	1
8	FLANGE, INNER, MASONRY, 4"	161305	1
9	SHAFT, BLADE	166586	1

FIGURE 5 - ASSY, 16" BLADE GUARD - P/N 166581



ITEM	DESCRIPTION	PART#	QTY
1	ELBOW, 1/4 MNPT STREET	154615	1
2	FITTING, 1/4 MNPT X 3/8 BARB	154659	1
3	SCREW, HEX HEAD 3/8 - 16 X 1 - 1/2 LG.	156656	2
4	CASTING, BLADE GUARD, 16" - COMP	166558	1
5	VALVE, BALL, 1/4"M TO 1/4"F	231248	1

FIGURE 6 - ASSY, CART - P/N 167437



ITEM	DESCRIPTION	PART#	QTY
1	NUT, 3/8 - 16 HEX	101188	18
2	WASHER, FLAT, USS, 3/8	101360	36
3	WASHER, 3/8 SPLIT LOCK	150925	16
4	NUT, 3/8 - 16 NYLOK HEX	152505	3
5	SCREW, 3/8 - 16 X 2-1/4 HEX HEAD	153529	1
6	KNOB, ADJ MK1408 5-PRONG -RAW	155239	2
7	GRIP, HANDLE 7/8 ID	158608	1
8	CASTER, 10" RIGID	167772	2
9	CASTER, 10" SWIVEL	167773	2
10	HANDLE, CART	167774	1
11	BOLT, HOOK, 38 - 16 X 5	167775	2
12	FRAME, CART	167776	1



**ORDERING INFORMATION**

---

You may order MK Diamond products through your local MK Diamond distributor or, you may order direct from MK Diamond.

**NOTE:** There is a \$25.00 minimum order when ordering direct from MK Diamond. All purchases must be made using VISA, MasterCard or American Express.

When ordering direct from MK Diamond, please have the following information ready before calling:

- The Model Number of the saw
- The Serial Number of the saw
- Where the saw was purchased and when
- The Part Number for the part(s) being ordered
- The Part Description for the part(s) being ordered

All parts may be ordered by calling toll free to – 800 421-5830 or 310 539-5221 and asking for Customer Service. For technical questions, call – 800 474-5594.

**RETURN MATERIALS POLICY**

---

To expedite the service relative to the return of a product purchased through MK Diamond, please observe the following:

**NOTE:** When returning all items, they must have been purchased within the previous twelve (12) months.

- Have the Model Number of the saw
- Have the Serial Number of the saw
- Have the location of where the saw was purchased
- Have the date when the saw was purchased
- Contact Customer Service for approval to return the item(s)
- Obtain a Returned Goods Number (RGA) authorizing the return
- Follow the packaging instructions in the following section
- Ensure your item(s) are prepaid to the destination

For returned items, call toll free to – 800 421-5830 or 310 539-5221 and ask for Customer Service. For technical questions, call – 800 474-5594 or 310 257-2845.

**PACKAGING INSTRUCTIONS**

---

- Remove the Cutting Head and Support Angle Assembly
- Dry the saw before shipping
- When packing, include the following: MK-1280, Diamond Blade, Blade Guard and Support Angle Assembly and Adjustable Cutting Guide (Other Accessories are not required)
- Package the unit in its original container or one of comparable size (do not ship the unit partially exposed)
- Ensure all parts are secured in the packaging to prevent moving

**AUTHORIZED SERVICE CENTERS**

---

For quicker repair time, you may contact MK Diamond Customer Service, toll free, at 800 421-5830 or 310 539-5221 for the Authorized Service Center closest to you or visit our web site at [www.mkdiamond.com](http://www.mkdiamond.com). For technical questions, call – 800 474-5594.

**MK-1280 ELECTRIC SAW SERIES**  
**OWNERS MANUAL & PART LIST**



**MK Diamond Products, Inc.**

MK Diamond Products, Inc.  
1315 Storm Parkway  
Torrance, CA 90501

Toll-Free: (800) 845-5830  
Phone: (310) 539-5221  
Fax: (310) 539-5158  
[www.mkdiamond.com](http://www.mkdiamond.com)