

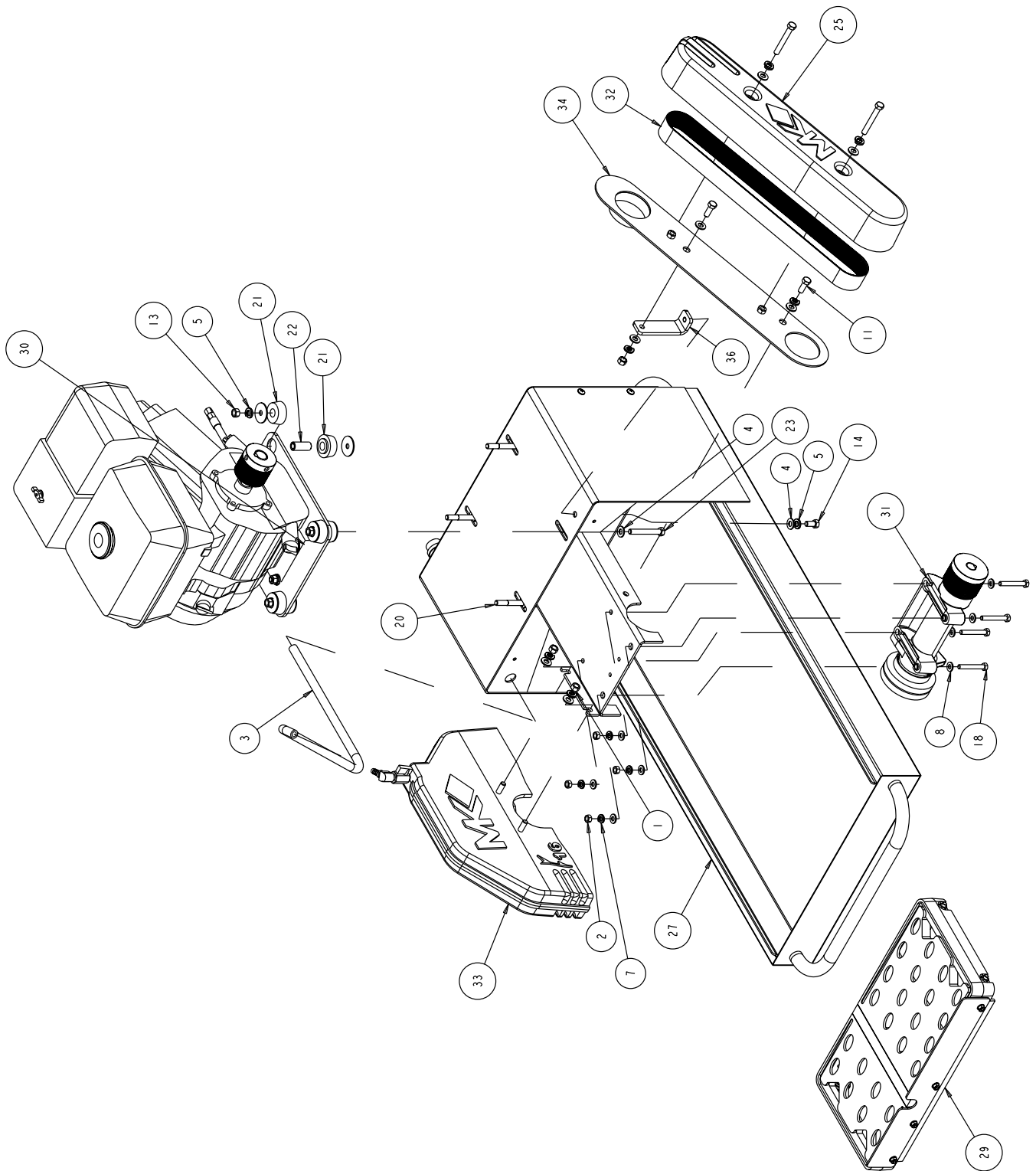
**MK-1280 GAS SERIES
BRICK/PAVER SAW
OWNERS MANUAL &
PART LIST**



Revision 105	03.2012
Manual Part No. 168579	

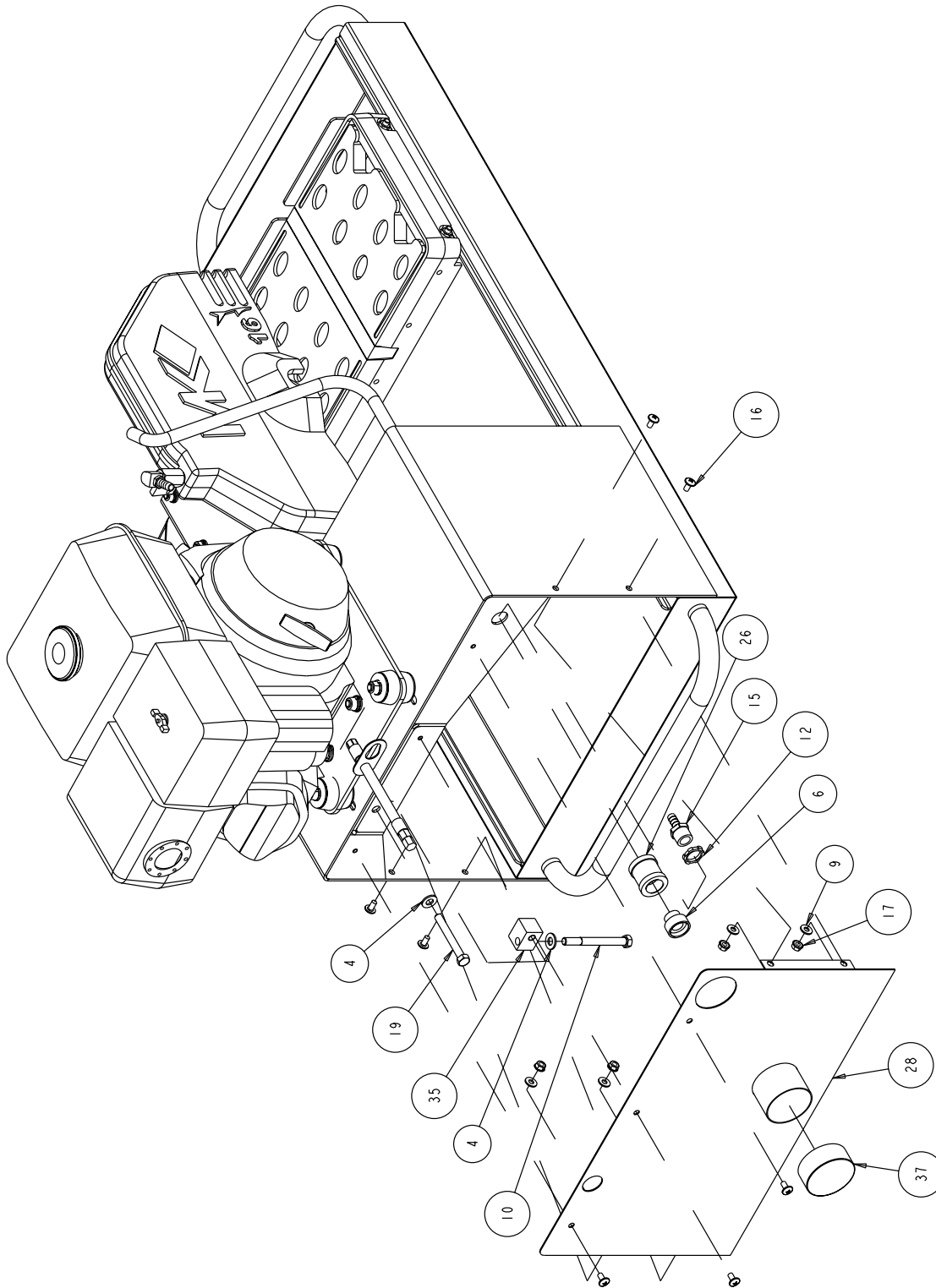
Caution: Read all safety and operating instructions before using this equipment. This owners manual **MUST** accompany the equipment at all times.

FIGURE 1 - MK-1280 SAW - P/N 166561



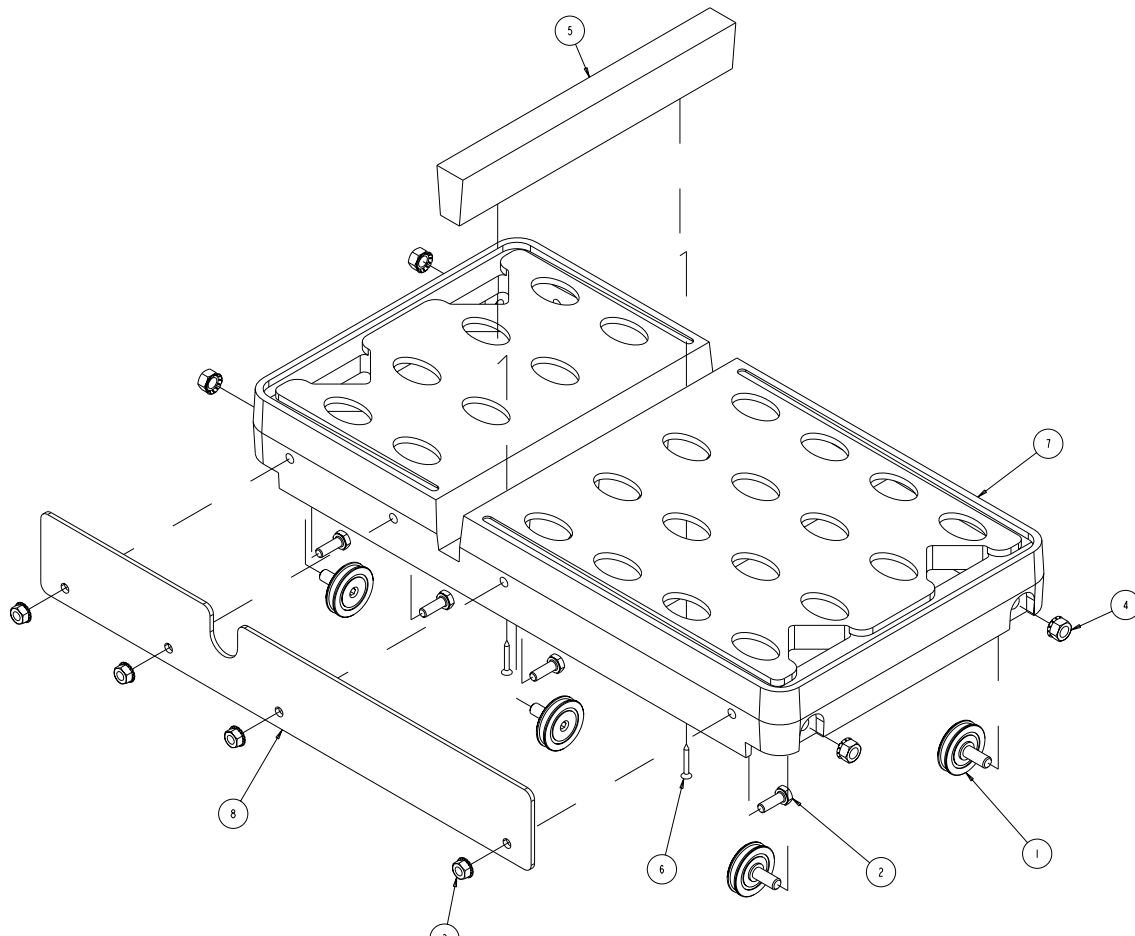
ITEM	DESCRIPTION	PART#	QTY
1	NUT, 3/8 16 HEX	101188	3
2	NUT, HEX, 5/16 - 18	101196	4
3	HOSE, WATER VINYL 3/8 X 1/2, 30'	150845	1
4	WASHER, 3/8 SAE FLAT	150923	13
5	WASHER, 3/8 SPLIT LOCK	150925	11
6	FITTING, 1/2 MNPT X 3/4 FNH	151322	1
7	WASHER, LOCK, SPLIT, 5/16	151747	4
8	WASHER, FLAT, SAE, 5/16	151754	8
9	WASHER, 1/4 SAE, FLAT	151915	4
10	SCREW, 3/8 - 16 X 3-3/4 HEX HD CAP	152504	1
11	SCREW, HEX HD CAP, 3/8 -16 X 1	152507	2
12	NUT, LOCK STEEL 1/2" NPT	152729	1
13	NUT, 3/8 -16 HEX CENTERLOCK	153522	4
14	SCREW, HEX, 3/8 -16 X 3/4	153527	1
15	FITTING, 1/2 MNPT X 3/8 BARB	153653	1
16	SCREW, 1/4 - 20 X 1/2 TRUSS HEAD	153880	7
17	NUT, HEX W/WSHR, 1/4 - 20	153941	4
18	SCREW, HEX, 5/16 - 18 X 2 - 1/4	153951	4
19	BOLT, HEX HEAD TAP, 3/8 - 16 X 3	155830	1
20	SCREW, 3/8 - 16 X 2 - 1/2 HEX HEAD CAP	156030	2
21	MOUNT, SHOCK MK-5000	156105	8
22	STAND OFF, SHOCK MOUNT	156560	4
23	SCREW, HEX HD CAP, 3/8 - 16 X 2 - 3/4	156774	3
24	WASHER, FENDER, 3/8 ID X 1-1/2 OD	158523	8
25	BELT GUARD, OUTER, ARBOR, COMP	160888	1
26	FITTING, 1/2 NPT COUPLER	164208	1
27	FRAME, MAIN MK-1280	166555	1
28	BACKSPLASH, MK-1280	166576	1
29	ASSY, TABLE, MK-1280	166577	1
30	ASSY, ENGINE, HONDA, MK-1280	166578	1
31	ASSY, ARBOR, MK-1280	166579	1
32	BELT, 16J420	166580	1
33	ASSY, BLADE GUARD, 16", MK-1280	166581	1
34	GUARD, BELT, INNER	166585	1
35	GUIDE, TENSION	167750	1
36	BRACKET, BELT GUARD	167763	1
37	CAP, VACUUM	167777	1

FIGURE 2 - MK-1280 PAVER SAW - P/N 166561



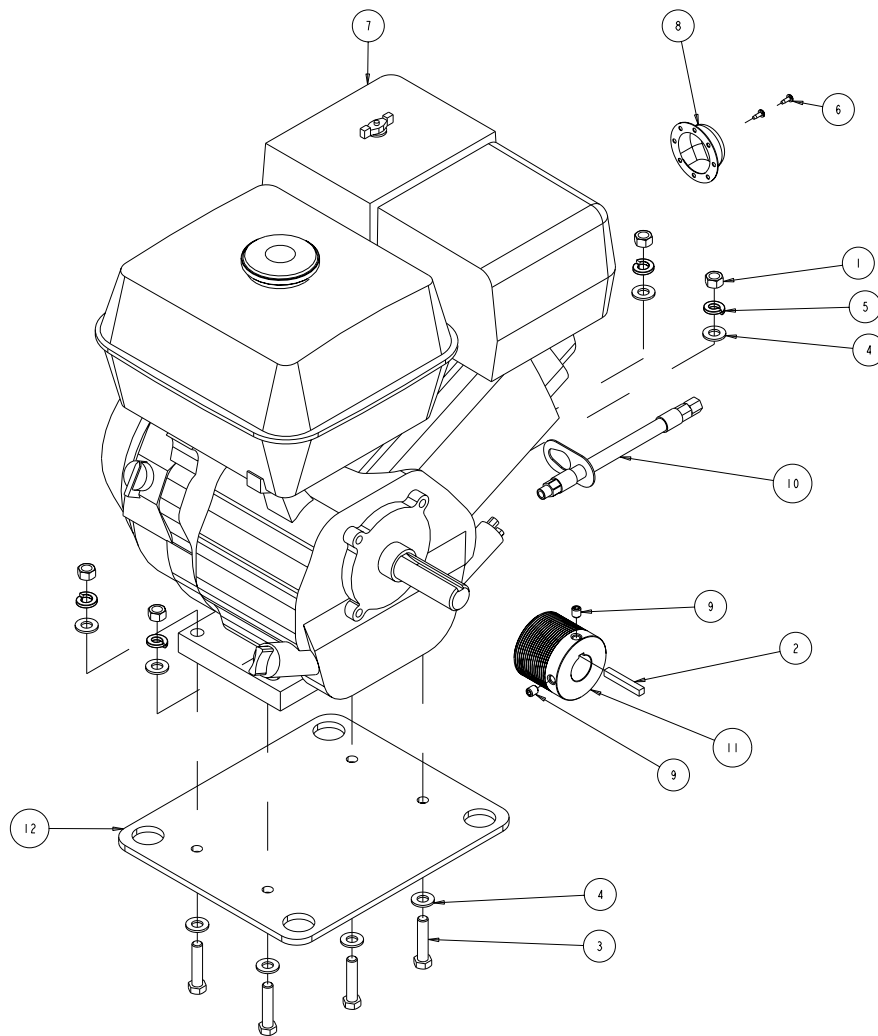
ITEM	DESCRIPTION	PART#	QTY
1	NUT, 3/8 16 HEX	101188	3
2	NUT, HEX, 5/16 - 18	101196	4
3	HOSE, WATER VINYL 3/8 X 1/2, 30'	150845	1
4	WASHER, 3/8 SAE FLAT	150923	13
5	WASHER, 3/8 SPLIT LOCK	150925	11
6	FITTING, 1/2 MNPT X 3/4 FNH	151322	1
7	WASHER, LOCK, SPLIT, 5/16	151747	4
8	WASHER, FLAT, SAE, 5/16	151754	8
9	WASHER, 1/4 SAE, FLAT	151915	4
10	SCREW, 3/8 - 16 X 3-3/4 HEX HD CAP	152504	1
11	SCREW, HEX HD CAP, 3/8 -16 X 1	152507	2
12	NUT, LOCK STEEL 1/2" NPT	152729	1
13	NUT, 3/8 -16 HEX CENTERLOCK	153522	4
14	SCREW, HEX, 3/8 -16 X 3/4	153527	1
15	FITTING, 1/2 MNPT X 3/8 BARB	153653	1
16	SCREW, 1/4 - 20 X 1/2 TRUSS HEAD	153880	7
17	NUT, HEX W/WSHR, 1/4 - 20	153941	4
18	SCREW, HEX, 5/16 - 18 X 2 - 1/4	153951	4
19	BOLT, HEX HEAD TAP, 3/8 - 16 X 3	155830	1
20	SCREW, 3/8 - 16 X 2 - 1/2 HEX HEAD CAP	156030	2
21	MOUNT, SHOCK MK-5000	156105	8
22	STAND OFF, SHOCK MOUNT	156560	4
23	SCREW, HEX HD CAP, 3/8 - 16 X 2 - 3/4	156774	3
24	WASHER, FENDER, 3/8 ID X 1-1/2 OD	158523	8
25	BELT GUARD, OUTER, ARBOR, COMP	160888	1
26	FITTING, 1/2 NPT COUPLER	164208	1
27	FRAME, MAIN MK-1280	166555	1
28	BACKSPLASH, MK-1280	166576	1
29	ASSY, TABLE, MK-1280	166577	1
30	ASSY, ENGINE, HONDA, MK-1280	166578	1
31	ASSY, ARBOR, MK-1280	166579	1
32	BELT, 16J420	166580	1
33	ASSY, BLADE GUARD, 16", MK-1280	166581	1
34	GUARD, BELT, INNER	166585	1
35	GUIDE, TENSION	167750	1
36	BRACKET, BELT GUARD	167763	1
37	CAP, VACUUM	167777	1

FIGURE 3 - ASSY, TABLE - P/N 166577



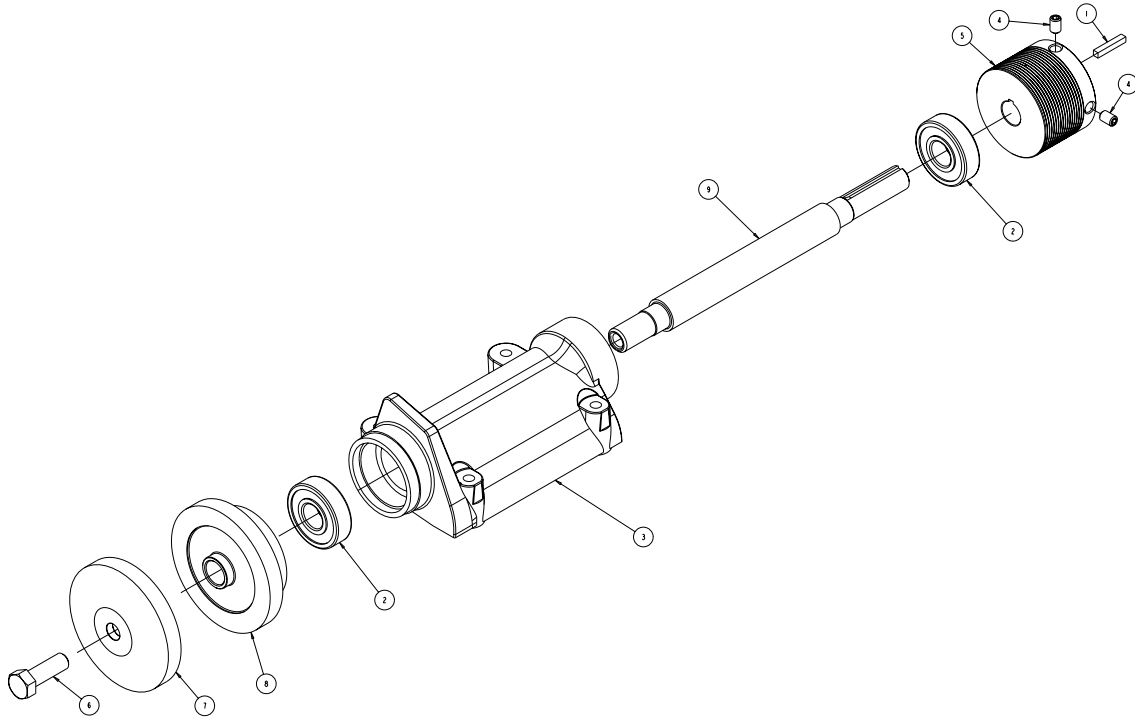
ITEM	DESCRIPTION	PART#	QTY
1	WHEEL, CONVEYOR CART	133090	4
2	SCREW, HEX HD, 1/4 - 20 X 3/4	152370	4
3	NUT, HEX W/WSHR, 1/4 - 20	153941	4
4	NUT, HEX, TW, 5/16 - 18	153942	4
5	WOOD STRIP, TABLE INSERT	158283	1
6	SCREW, DRYWL, FLAT HD, #6X1	159906	2
7	CASTING, TABLE, MK-1280	165398	1
8	BACKSTOP, TABLE	166584	1

FIGURE 4 - ASSY, ENGINE, HONDA - P/N 166578

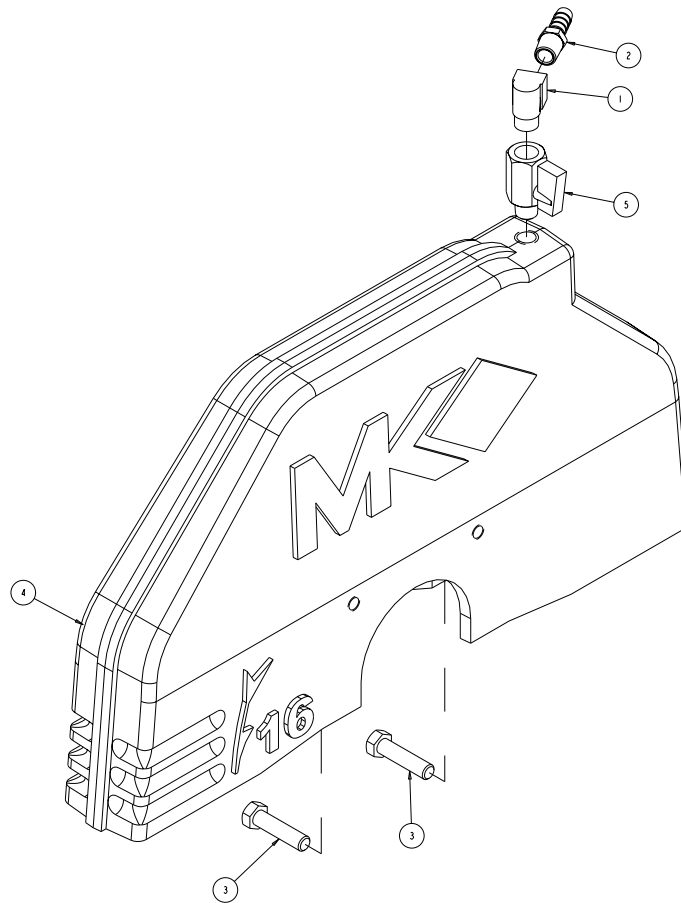


ITEM	DESCRIPTION	PART#	QTY
1	NUT, 3/8 - 16 HEX	101188	4
2	KEY, SQUARE, 1/4 X 1-3/4	150796	1
3	SCREW, 3/8 - 16 X 1-3/4 HEX HEAD CAP	150920	4
4	WASHER, 3/8 SAE FLAT	150923	8
5	WASHER, 3/8 SPLIT LOCK	150925	4
6	SCREW, #6 - 32 X 3/8 SOCKET HEAD SET	157083	2
7	ENGINE, HONDA GX270	155133	1
8	DEFLECTOR, 5 - 1/2HP HONDA	156710	1
9	SCREW, 5/16 - 18 X 3/8 SOCKET HEAD SET	157083	2
10	ASSY, OIL DRAIN, 10MM	157577-01	1
11	PULLEY, 16J25 X 1.0 BORE	158470	1
12	PLATE, MOTOR MOUNT	166556	1

FIGURE 5 - ASSY, ARBOR - P/N 166579

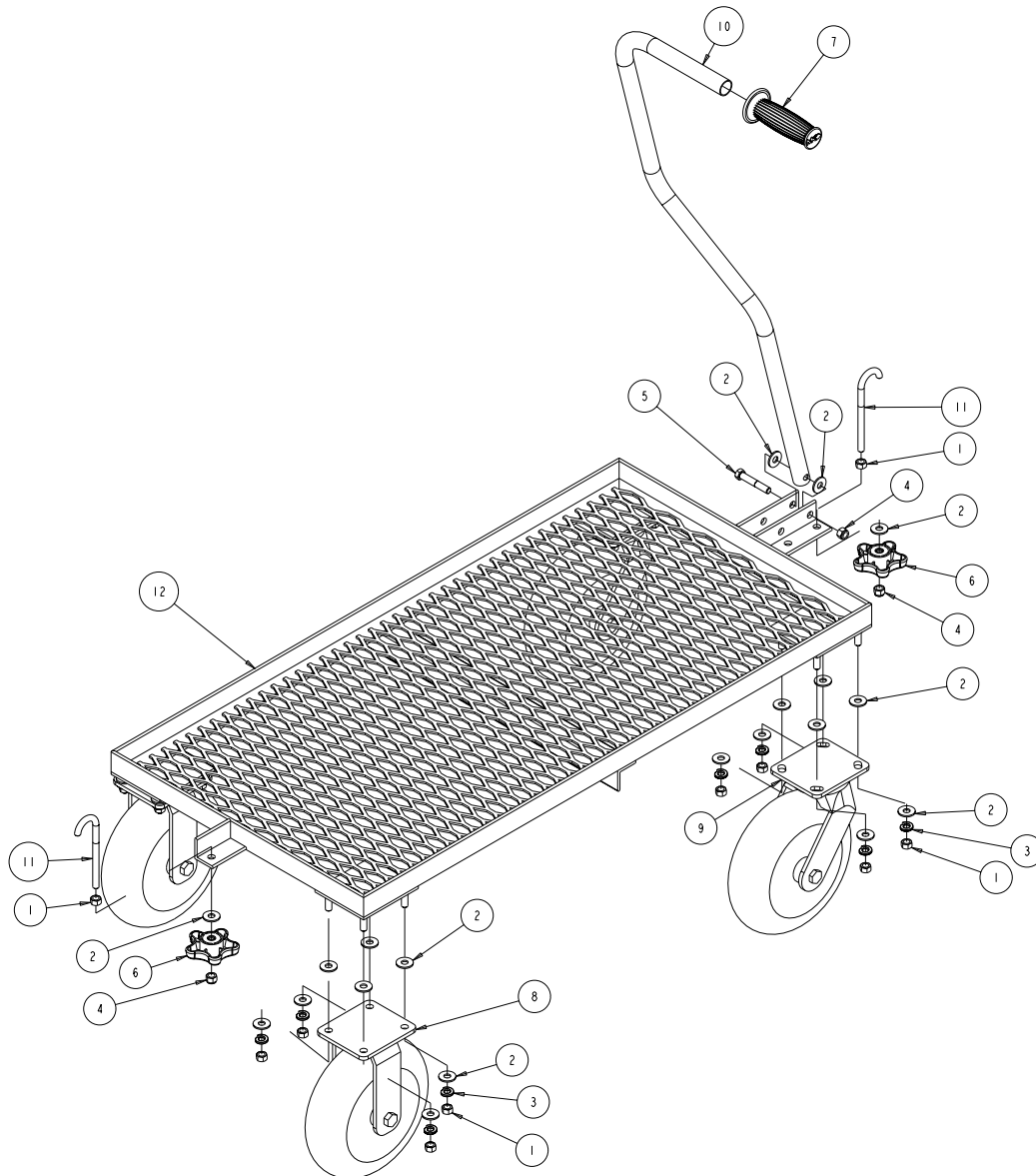


ITEM	DESCRIPTION	PART#	QTY
1	KEY, 3/16 SQ X 1 - 1/8	150344	1
2	BEARING, ARBOR HOUSING	154594	2
3	CASTING, 2000/5000 ARBPR - COMP	154637	1
4	SCREW, 5/16 - 18 X 3/8 SOCKET HEAD SET	157084	2
5	PULLEY, 16J28 X .75 BORE	160362	1
6	SCREW, 1/2 - 13 X 1-1/12 HEX HEAD, LEFT HAND	160818	1
7	FLANGE, OUTER, MASONRY, 4"	161304	1
8	FLANGE, INNER, MASONRY, 4"	161305	1
9	SHAFT, BLADE	166586	1

FIGURE 6 - ASSY, 16" BLADE GUARD - P/N 166581

ITEM	DESCRIPTION	PART#	QTY
1	ELBOW, 1/4 MNPT STREET	154615	1
2	FITTING, 1/4 MNPT X 3/8 BARB	154659	1
3	SCREW, HEX HEAD 3/8 - 16 X 1 - 1/2 LG.	156656	2
4	CASTING, BLADE GUARD, 16" - COMP	166558	1
5	VALVE, BALL, 1/4"M TO 1/4"F	231248	1

FIGURE 7 - ASSY, CART - P/N 166581



ITEM	DESCRIPTION	PART#	QTY
1	NUT, 3/8 - 16 HEX	101188	18
2	WASHER, FLAT, USS, 3/8	101360	36
3	WASHER, 3/8 SPLIT LOCK	150925	16
4	NUT, 3/8 - 16 NYLOK HEX	152505	3
5	SCREW, 3/8 - 16 X 2-1/4 HEX HEAD	153529	1
6	KNOB, ADJ MK1408 5-PRONG -RAW	155239	2
7	GRIP, HANDLE 7/8 ID	158608	1
8	CASTER, 10" RIGID	167772	2
9	CASTER, 10' SWIVEL	167773	2
10	HANDLE, CART	167774	1
11	BOLT, HOOK, 38 - 16 X 5	167775	2
12	FRAME, CART	167776	1

ORDERING INFORMATION

You may order MK Diamond products through your local MK Diamond distributor or, you may order direct from MK Diamond.

When ordering direct from MK Diamond, please have the following information ready before calling:

- The Model Number of the saw
- The Serial Number of the saw
- Where the saw was purchased and when
- The Part Number for the part(s) being ordered
- The Part Description for the part(s) being ordered

NOTE: There is a \$25.00 minimum order when ordering direct from MK Diamond. A \$5.00 charge will be added to orders having a net billing value under \$50.00. All purchases must be made using VISA, MasterCard or American Express.

All parts may be ordered by calling toll free to – 800 421-5830 or 310 539-5221 and asking for Customer Service. For technical questions, call – 800 474-5594.

RETURN MATERIALS POLICY

To expedite the service relative to the return of a product purchased through MK Diamond, please observe the following:

NOTE: When returning all items, they must have been purchased within the previous twelve (12) months.

- Have the Model Number of the saw
- Have the Serial Number of the saw
- Have the location of where the saw was purchased
- Have the date when the saw was purchased
- Contact Customer Service for approval to return the item(s)
- Obtain a Returned Goods Number (RGA) authorizing the return
- Follow the packaging instructions in the following section
- Ensure your item(s) are prepaid to the destination

For returned items, call toll free to – 800 421-5830 or 310 539-5221 and ask for Customer Service. For technical questions, call – 800 474-5594 or 310 257-2845.

PACKAGING INSTRUCTIONS

- Remove the Cutting Head and Support Angle Assembly
- Dry the saw before shipping
- When packing, include the following: Saw, Diamond Blade, Blade Guard and Support Angle Assembly and Adjustable Cutting Guide (Other Accessories are not required)
- Package the unit in its original container or one of comparable size (do not ship the unit partially exposed)
- Ensure all parts are secured in the packaging to prevent moving

AUTHORIZED SERVICE CENTERS

For quicker repair time, you may contact MK Diamond Customer Service, toll free, at 800 421-5830 or 310 539-5221 for the Authorized Service Center closest to you or visit our web site at www.mkdiamond.com. For technical questions, call – 800 474-5594.

CONTACT:

Please contact MK Diamond Products, Inc. Customer Service Department with any questions you might have regarding distributors, parts or service.

Telephone: **(800) 421-5830**

Fax: **(310) 539-5158**

E-mail: **Customer_Service@MKDiamond.com**

Customer Service Hours: **Monday through Friday, 6AM-4PM PST**

MK Diamond Products, Inc.
1315 Storm Parkway
Torrance, CA 90501

MK DIAMOND PRODUCTS, INC. LIMITED WARRANTY

MK DIAMOND PRODUCTS, INC. will guarantee every machine they build, to be free from defects in material and workmanship for (1) one year from date of purchase. The obligation of MK DIAMOND PRODUCTS, INC. under this warranty is limited to the repair or replacement of any parts which, under normal use, prove to be defective in material or workmanship. The parts involved or the unit in question should be returned to MK DIAMOND PRODUCTS, INC. or to a point designated by us, transportation prepaid.

This warranty does not obligate us to bear the cost of labor or transportation charges in connection with replacement or repair of defective parts. Likewise, it shall NOT apply to any unit which has been subjected to misuse, neglect or accident. This warranty does NOT apply to any machine which has been repaired or altered outside our factory.

This warranty does NOT obligate MK DIAMOND PRODUCTS, INC., with respect to items not of our manufacture, such as engines, motors, hydraulics, etc., which are subject to their own guarantees and warranties.

We shall in no event be liable for consequential damages or contingent liabilities arising out of failure of any equipment or parts to operate properly.

© COPYRIGHT 2012, MK DIAMOND PRODUCTS, INC. ALL RIGHTS RESERVED.

The MK Diamond logo is a registered trademark of MK Diamond Products, Inc. and may not be used, reproduced, or altered without written permission. All other trademarks are the property of their respective owners and used with permission.

MK Diamond may have patents, patent applications, trade marks, copyrights of other intellectual property right covering this product in this document.

This manual MUST accompany the equipment at all times. This manual is considered a permanent part of the equipment and should remain with the unit if resold.

The information and specifications included in this publication were in effect at the time of approval for printing.

MK-1280 GAS SAW SERIES
OWNERS MANUAL & PART LIST



MK Diamond Products, Inc.

MK Diamond Products, Inc.
1315 Storm Parkway
Torrance, CA 90501

Toll-Free: (800) 845-5830
Phone: (310) 539-5221
Fax: (310) 539-5158
www.mkdiamond.com