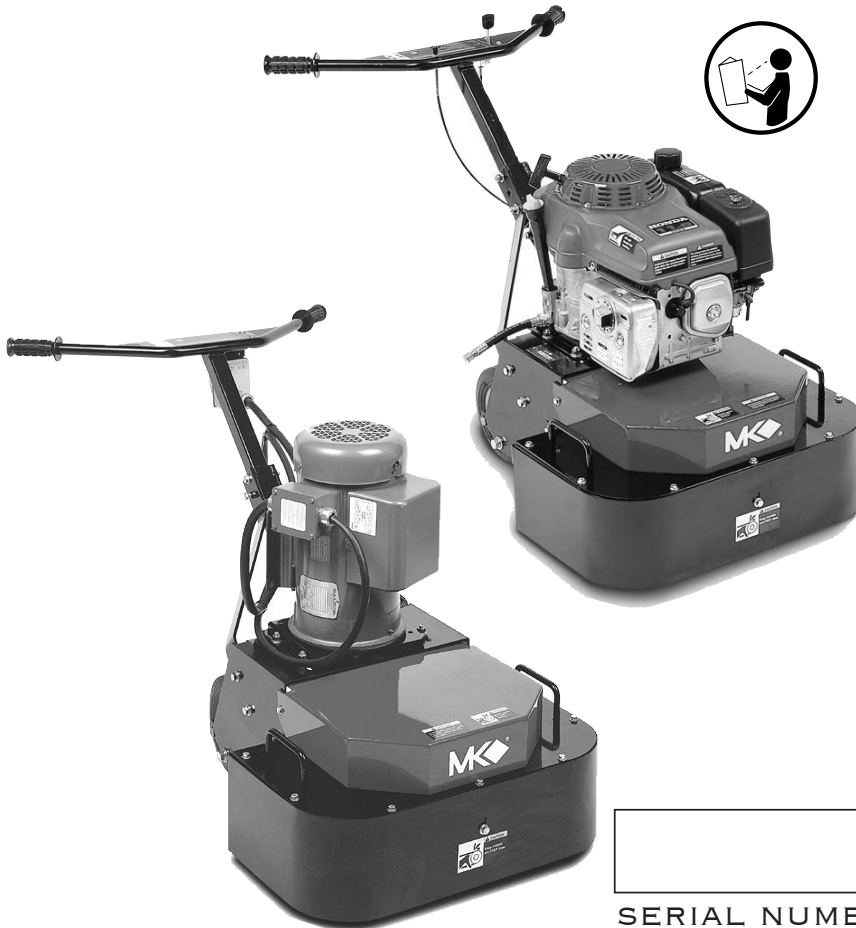


DOUBLE DISC GRINDER
OWNER'S MANUAL
PARTS LIST &
OPERATING INSTRUCTIONS



CAUTION

READ SAFETY
AND GENERAL
INSTRUCTIONS
CAREFULLY
BEFORE USING
GRINDER FOR
THE FIRST
TIME.



SERIAL NUMBER

YOU SHOULD RECORD THE SERIAL NUMBER
OF YOUR STAND ON THIS OWNER'S MANUAL
AND ON THE WARRANTY CARD, WHICH MUST
BE SENT IN TO BE EFFECTIVE. BE SURE
TO INCLUDE ALL PERTINENT INFORMATION
REQUIRED.

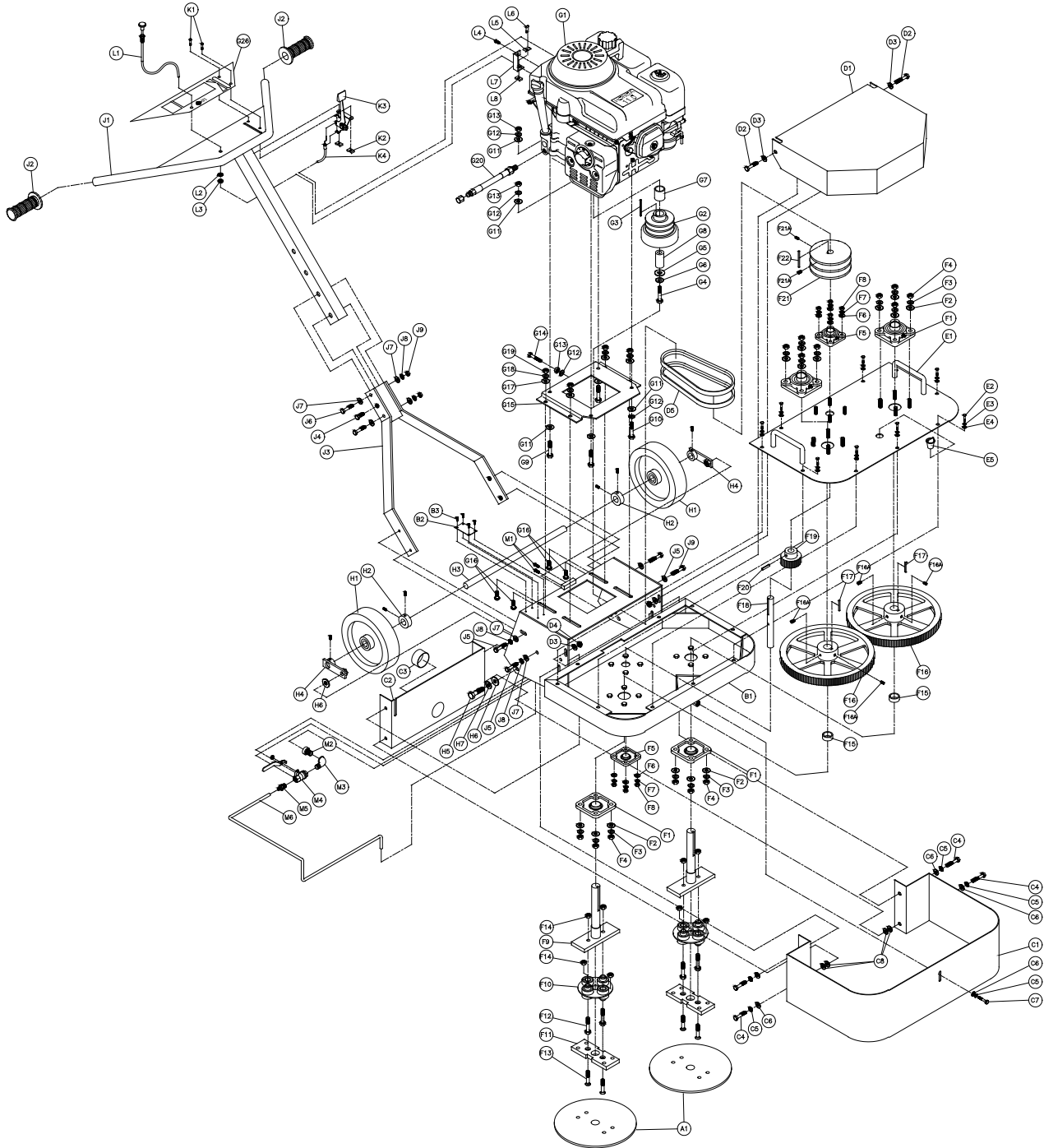
WARNING

- Wear eye protection.
- Disconnect power or disconnect spark plug before servicing, changing grinding wheels and cleaning.
- Replace damaged grinding wheels before operating.

Part No. 157499
Revision 04/05

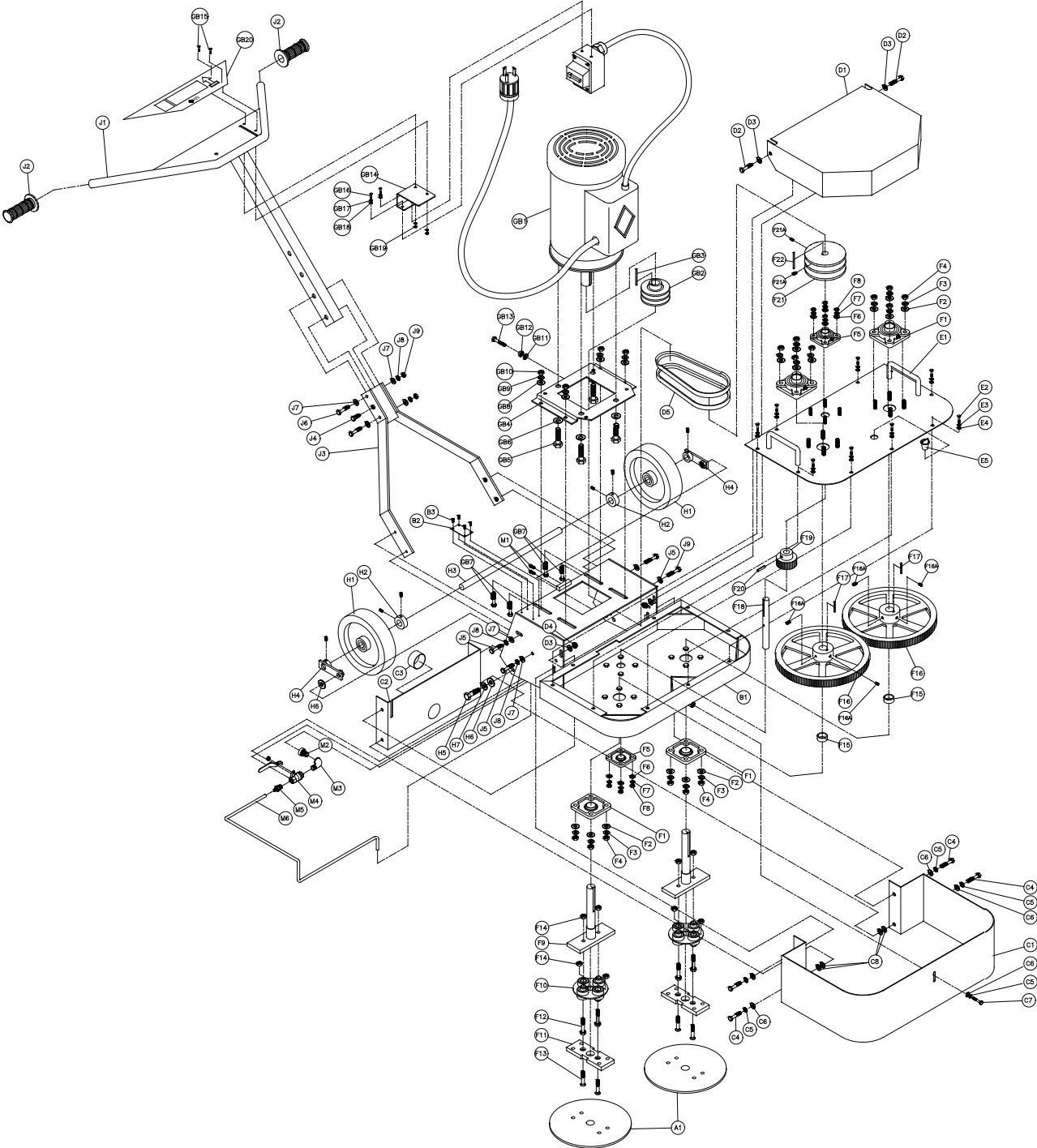
MK-DOUBLE DISC GRINDER

MK-DDG EXPLODED VIEW



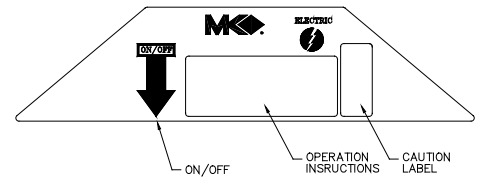
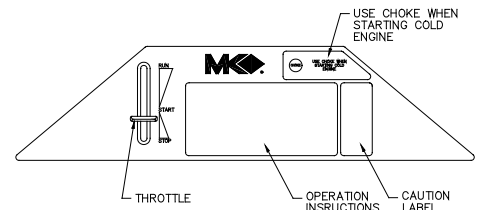
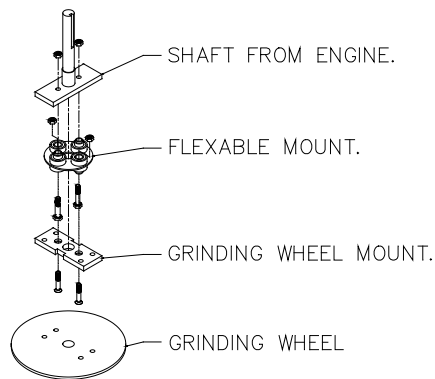
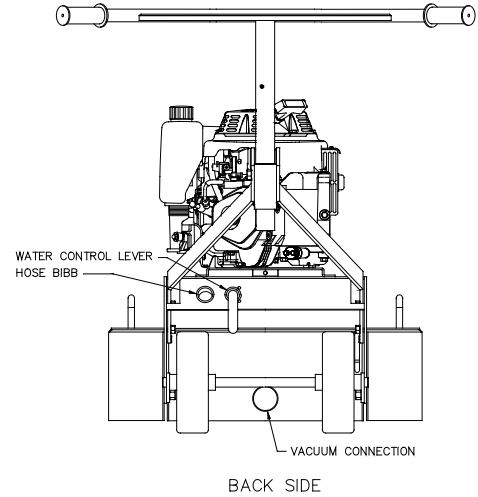
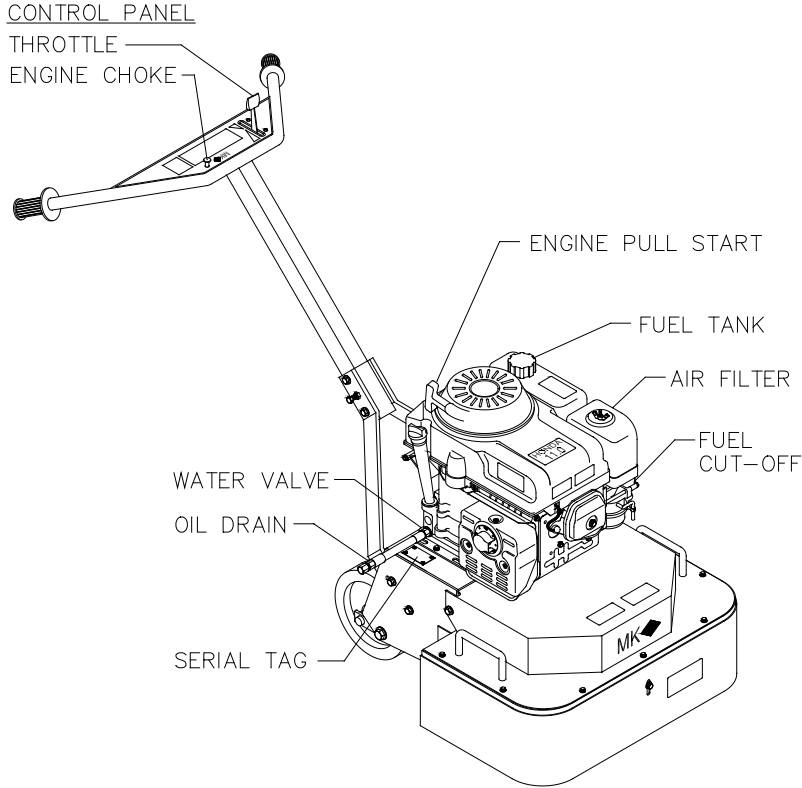
EXPLODED VIEW WITH GAS ENGINE

MK-DDG EXPLODED VIEW



EXPLODED VIEW WITH ELECTRIC MOTOR

MK-DDG EXPLODED VIEW



PARTS LIST:

Item	Description	Qty	Part #
A	Assembly, Accessory Pack	-	-
A1	Grinding Wheels 10" (Reference only)	0	reference
A2	Pallet (not shown)	1	157700
A3	Carton, DDG-11 Grinder (not shown)	1	157701
A4	Carton, DDG-11 Top (not shown)	1	158369
A5	Carton, DDG-11 Inserts (not shown)	2	158370
A6	Tube, Owner's Manual (not shown)	1	155419
A7	Manual, Owner's (not shown)	1	157499
A8	Bolt, Hex HD, 3/8-24 x 1 Grinding Disk, Mounting	8	157803
A9	Washer, 3/8 Split Lock	8	150925
A10	Washer, 3/8 Flat SAE	8	150923
B	Assembly, Frame	1	157381
B1	Frame Weldment	1	157068
B2	Plate, Serial Number	1	157500
B3	#7 X 5/16 Drive Screw	4	157849
B4	Label, Water Shut Off/On	1	154404
C	Assembly, Apron	1	-
C1	Apron,	1	157064
C2	Plate, Vacuum	1	157255
C3	Cap, Vacuum Attachment	1	157503
C4	Screw, 5/16-18 x 1-1/4 Hex Head	4	153950
C5	Washer, 5/16 lock, split	5	151747
C6	Washer, 5/16 SAE Flat	5	151754
C7	Screw, 5/16-18 x 3/4 Hex Head	1	151369
C8	Label, Caution, Hands and Feet	1	155585
D	Assembly, Belt Guard	1	-
D1	Guard, Belt	1	157069
D2	Screw, 1/4-20 X 1 Hex Head Cap	2	152676
D3	Washer, 1/4 SAE Flat	4	151915
D4	Nut, Hex W/ WSHR 1/4-20 (KEPS)	2	153941
D5	V-Belt (V AX-25)	2	152403
D6	Label, MK Logo Adhesive	1	157914
D7	Label, Caution, Belt Tension	1	155583
D8	Label, Caution, Guards in Place	1	155587
E	Assembly, Gear, Cover	1	-
E1	Cover, Gear	1	157066
E2	Screw, 1/4-20 x 3/4 Hex Head Cap	9	152370
E3	Washer, 1/4 Split Lock	9	152591
E4	Washer, 1/4 SAE Flat	9	151915
E5	Cap, Grease	1	157915
F	Assembly, Components, Gear Box	-	-
F1	Flange unit, 1" dia 4 Bolt (Bearing)	4	157305
F2	Washer, 7/16 Flat SAE	16	151050
F3	Washer, 7/16 Split Lock	16	151051
F4	Nut, 7/16-14, Hex	16	150922
F5	Flange unit, 3/4" dia 4 Bolt (Bearing)	2	157304

MK-DDG PARTS LIST (cont...)

F6	Washer, 3/8 Flat SAE	8	150923
F7	Washer, 3/8 Split Lock	8	150925
F8	Nut, 3/8-16, Hex	8	101188
F9	Shaft, 1" dia Large Gear	2	157302
F10	Flexible Mount, Morflex (Morse 402 Insert)	2	157411
F11	Mount, Grinding Wheel	2	157407
F12	Screw, 3/8-16 x 2 1/2 Hex HD Cap	4	156030
F13	Screw, 3/8-16 x 2 1/2 Flt. Soc. HD.	4	157562
F14	Nut, 3/8-16, Hex Nylock	8	152505
F15	Bushing, 1 1/4 OD x 1 ID x 1/2 Spacer	2	157410
F16	Gear, 11 1/2" dia Spur (Cast 10P 112T-14 1/2 PA)	2	157306
F17	Key, Square, 1/4 x 1/4 x 1 1/4"	2	159852
F18	Shaft, 3/4" dia Small Gear	1	157303
F19	Gear, 2 1/2" dia Spur (Steel 10P 25T-14 1/2 PA)	1	157307
F20	Pin, 1/4 x 1 1/2" Rolled	1	157565
F21	Pulley, 2AK51H	1	159849
	F21A) Bushing, H 3/4 Q.D.	1	159850
F22	Key, Square, 3/16 x 3/16 x 1 3/4"	1	157561
G	Assembly, Engine, 11HP Honda	1	-
G1	Engine, Honda GX340k2dx3	1	157067
G2	Clutch, 3 1/2" OD with 1" I.D. 3 1/2" 2 Groove Pulley,	1	157309
G3	Key, Square, 1/4 x 1/4 x 1 1/2"	1	157560
G4	Bolt, 7/16-20 x 3" Hex Head	1	157678
G5	Washer, 1 1/2" USS	1	157679
G6	Washer, 7/16 Split Lock	1	151051
G7	Spacer, 1 1/4" OD, 1" I.D. x 1 3/8"	1	157680
G8	Spacer, 1" OD, 1/2" I.D. x 2"	1	157681
G9	Screw, 5/16-18 x 1 1/2" Hex Head Cap	2	152467
G10	Bolt, 5/16-24 x 1" Hex Head Tap	2	157646
G11	Washer, 5/16 SAE Flat	5	101352
G12	Washer, 5/16 Split Lock	5	151747
G13	Nut, 5/16-18 Hex	3	101196
G14	Bolt, 5/16-18 x 2 3/4" Hex Head Tap	1	156974
G15	Mount, Engine	1	157071
G16	Screw, 3/8-16 x 1" Carriage Bolt	4	157644
G17	Washer, 3/8 SAE Flat	4	150923
G18	Washer, 3/8 Split Lock	4	150925
G19	Nut, 3/8-16 Hex	4	101188
G20	Hose, Oil Drain (20mm)	1	157577-04
G21	Label, Caution, Hot Surface, 1.5 x 3.0	1	155578
G22	Label, Warning, Refueling, 1.5 x 3.0	1	155580
G23	Label, Danger, California, 1.5 x 3.0	1	155581
G24	Label, Danger, Lethal Exhaust, 1.5 x 3.0	1	155582
G25	Label, Caution, Sparkplug	1	155579
G26	Label, Control Panel (Gas)	1	157075
GB	Assembly, 5hp Electric Motor		-
GB1	Motor, 5 hp 230v 60hz 1ph, Electric C' face (Lesson / Baldor)	1	160107
GB2	Pulley, 2BK34X 1 1/8	1	160108
GB3	Key, Square, 1/4 x 1/4 x 1 3/4"	1	150796
GB4	Mount, Engine	1	157071

MK-DDG PARTS LIST (cont...)

GB5	Screw, 1/2-13 x 1 1/4 UNC Hex Head	4	153532
GB6	Washer, 1/2 Split Lock	4	153524
GB7	Screw, 3/8-16 x 1" Carriage Bolt	4	157644
GB8	Washer, 3/8 SAE Flat	4	150923
GB9	Washer, 3/8 Split Lock	4	150925
GB10	Nut, 3/8-16 Hex	4	101188
GB11	Washer, 5/16 Split Lock	5	151747
GB12	Nut, 5/16-18 Hex	3	101196
GB13	Bolt, 5/16-18 x 2 3/4" Hex Head Tap	1	156974
GB14	Bracket, Switchbox (previous #227269)	1	160110
GB15	Screw, 1/4-20 x 3/4" Pan HD Phil Cap	2	227270
GB16	Screw, 1/4-20 x 1/2 Hex Head Cap	2	152608
GB17	Washer, 1/4 Split Lock	4	152591
GB18	Washer, 1/4 SAE Flat	4	151915
GB19	Nut, 1/4-20 Hex	2	151893
GB20	Label, Control Panel, (Electric)	1	160109
H	Assembly, Axle	1	-
H1	Wheel, 8"Dia. X2	2	155986
H2	Collar, 3/4 set	2	153814
H3	Axle, 3/4 Dia.	1	157065
H4	Mount, Wheel Shaft,	2	157072
H5	Screw, 1/2-13 x 1 1/4 UNC Hex Head	2	153532
H6	Washer, 1/2 SAE Flat	4	150924
H7	Washer, 1/2 Split Lock	2	153524
J	Assembly, Handlebar (Top & Bottom)	1	-
J1	Handlebar, Top	1	157260
J2	Handgrip	2	150842
J3	Handlebar, Bottom	1	157070
J4	Screw, 3/8-16 X 1 Hex Head Cap	1	152507
J5	Screw, 3/8-16 X 1 1/4 Hex Head Cap	4	150774
J6	Screw, 3/8-16 X 3 Hex Head Cap	4	153113
J7	Washer, 3/8 SAE Flat	8	150923
J8	Washer, 3/8 Split Lock	6	150925
J9	Nut, 3/8-16 Hex	2	101188
K	Assembly, Throttle, Honda	1	-
K1	Scerw, (Phil) Self Tap 10-24 x 5/8	2	153681
K2	Nut, 10-24 Clip	2	155407
K3	Assembly, Throttle Head	1	155406
K4	Cable, Throttle, Honda	1	156640
L	Assembly, Choke, Honda	1	-
L1	Cable, Choke	1	154210
L2	Washer, 3/8 SAE Flat	4	150923
L3	Nut, 3/8-24 Hex, Jam	1	156623
L4	Screw, 10-32 X 1/2" Pan Head Phillips Cap	1	151052
L5	Clamp, Transmission Control	1	154383
L6	Scerw, (Phil) Self Tap 10-24 x 5/8	1	153681
L7	Clip, Choke Cable	1	157504
L8	Nut, 10-24 Clip	1	155407

MK-DDG PARTS LIST (cont...)

M	Assembly, Water Valve	1	-
M1	Screw, 10-24 x 3/8 Phillips Head Self-Tapping Cap	2	151262
M2	Fitting, Brass, 1/2 MNPT x Garden Hose Swivel	1	151322
M3	Elbow, 1/2 MNPT 90° Street Galvanized	1	150844
M4	Valve, Shut-Off, 1/2 FNPT x 1/2 FNPT	1	153796
M5	Fitting, Brass, 1/2 MNPT x 1/4 Compression Fit	1	157563
M6	Tube, 1/4 OD Copper	2'	157564