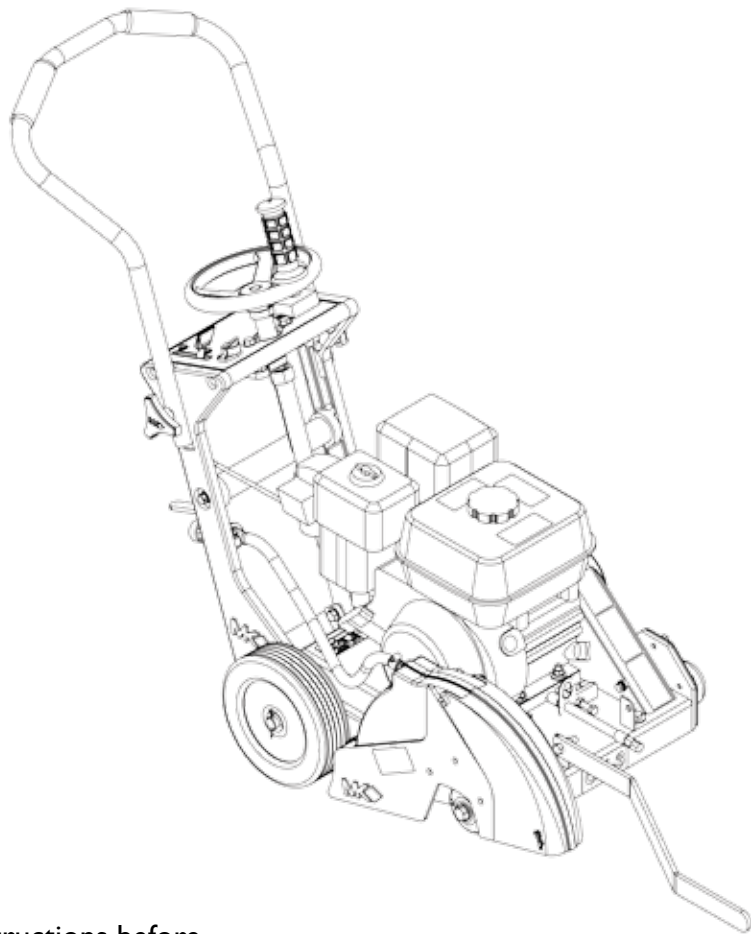


MK DIAMOND CX-3, WITH GX160 HONDA ENGINE WALK-BEHIND CONCRETE SAW PARTS LIST & EXPLODED VIEWS



Revision 202	04.2009

Caution: Read all safety and operating instructions before using this equipment. This parts list **MUST** accompany the equipment at all times.

MK DIAMOND CX-3 WITH GX160 HONDA ENGINE	PAGE
INTRODUCTION	NO.
Welcome	4
Safety Warnings	4
PARTS LIST	
FIGURE 1 - PARTS LIST: MK-CX3 CONC SAW W/GX160H - P/N 159345	5
FIGURE 2 - PARTS LIST: MK-CX3 CONC SAW W/GX160H - P/N 159345	6-7
FIGURE 3 - PARTS LIST: MK-CX3 CONC SAW W/GX160H - P/N 159345	8-9
FIGURE 4 - PARTS LIST: MK-CX3 LESS ENGINE - P/N 165974	10-11
FIGURE 5 - PARTS LIST: MK-CX3 LESS ENGINE - P/N 165974	12-13
FIGURE 6 - PARTS LIST: MK-CX3 LESS ENGINE - P/N 165974	14-15
FIGURE 7 - PARTS LIST: ASSY, FRONT AXLE - P/N 165975	16
FIGURE 8 - PARTS LIST: ASSY, BLADE SHAFT - P/N 165977	17
GENERAL PRODUCT INFORMATION	
Accessories, Ordering and Return Information	18
Contact Information and Limited Warranty	19

Congratulations on your purchase of an MK Diamond CX-3 Concrete Saw. We are certain that you will be pleased with your purchase. MK Diamond takes pride in producing the finest construction power tools and diamond blades in the industry.

Operated correctly, your CX-3 should provide you with years of service. In order to help you, we have included this parts manual. This manual contains exploded views and parts lists for your CX-3. Please take a few minutes to familiarize yourself with the components by reading and reviewing this manual.

If you should have questions, please feel free to call our friendly customer service department at: **(800) 421-5830.**

Regards,

MK Diamond

WARNINGS

Each machine is supplied with an operating instruction manual. Follow instructions strictly to ensure long service in normal operation. For repairs and service parts, contact your authorized MK Diamond dealer.



WARNING

Failure to comply with these warnings and instructions could result in death or serious injury.



WARNING

Always park the machine on a level surface with the engine "OFF" and the ignition switch set in the "OFF" position before performing any maintenance. **Let the machine cool down! Disconnect sparkplug!**



WARNING

This saw was designed for certain applications only. **DO NOT** modify this saw or use for any application other than for which it was designed. If you have any questions relative to its application, **DO NOT** use the saw until you have contacted your MK Diamond dealer. The manufacturer accepts no responsibility by unsuitable use or modifications.

FIGURE 1 - PARTS LIST: MK-CX3 CONC SAW W/GXI60H - P/N 159345

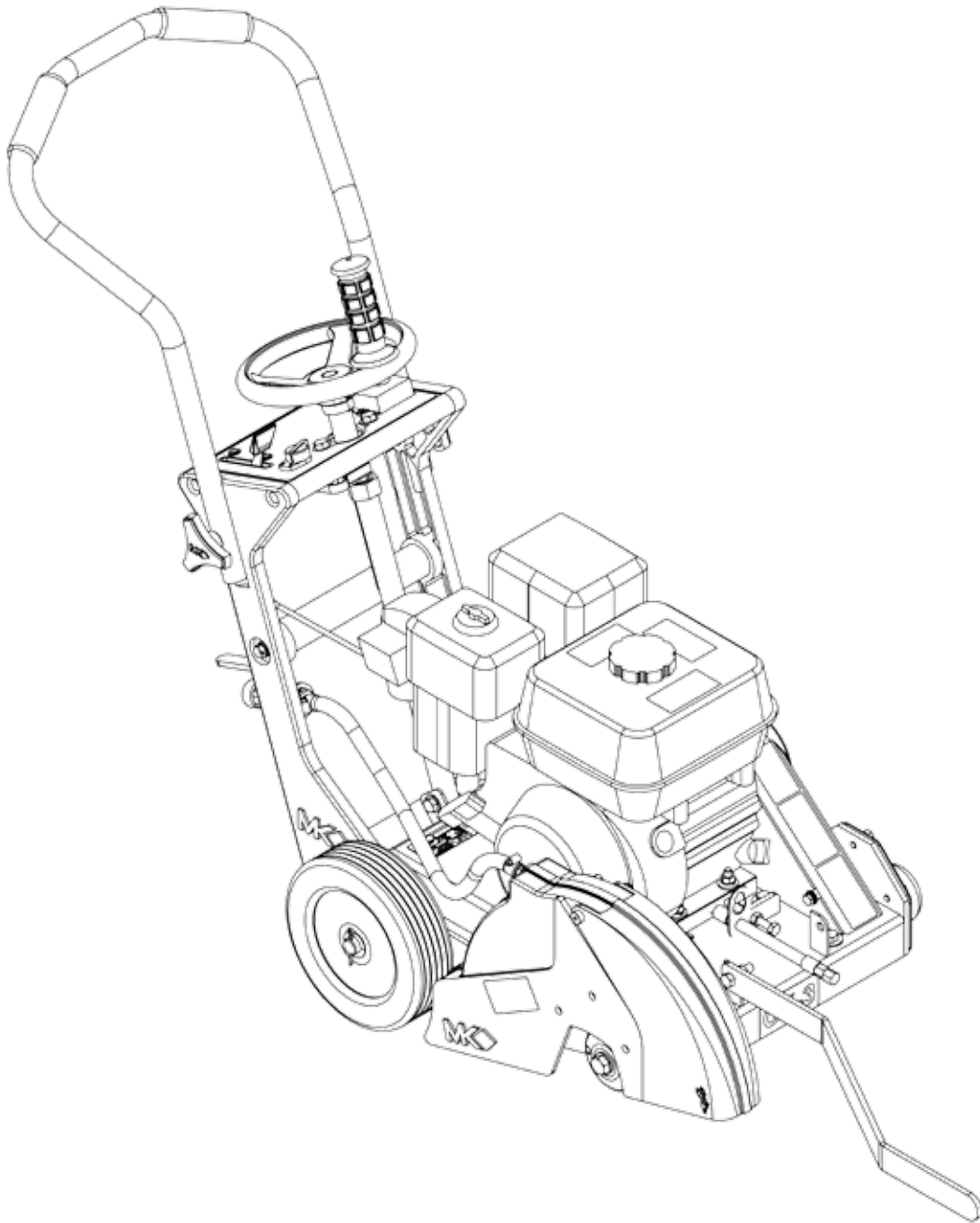


FIGURE 2 - PARTS LIST: MK-CX3 CONC SAW W/GX160H - P/N 159345

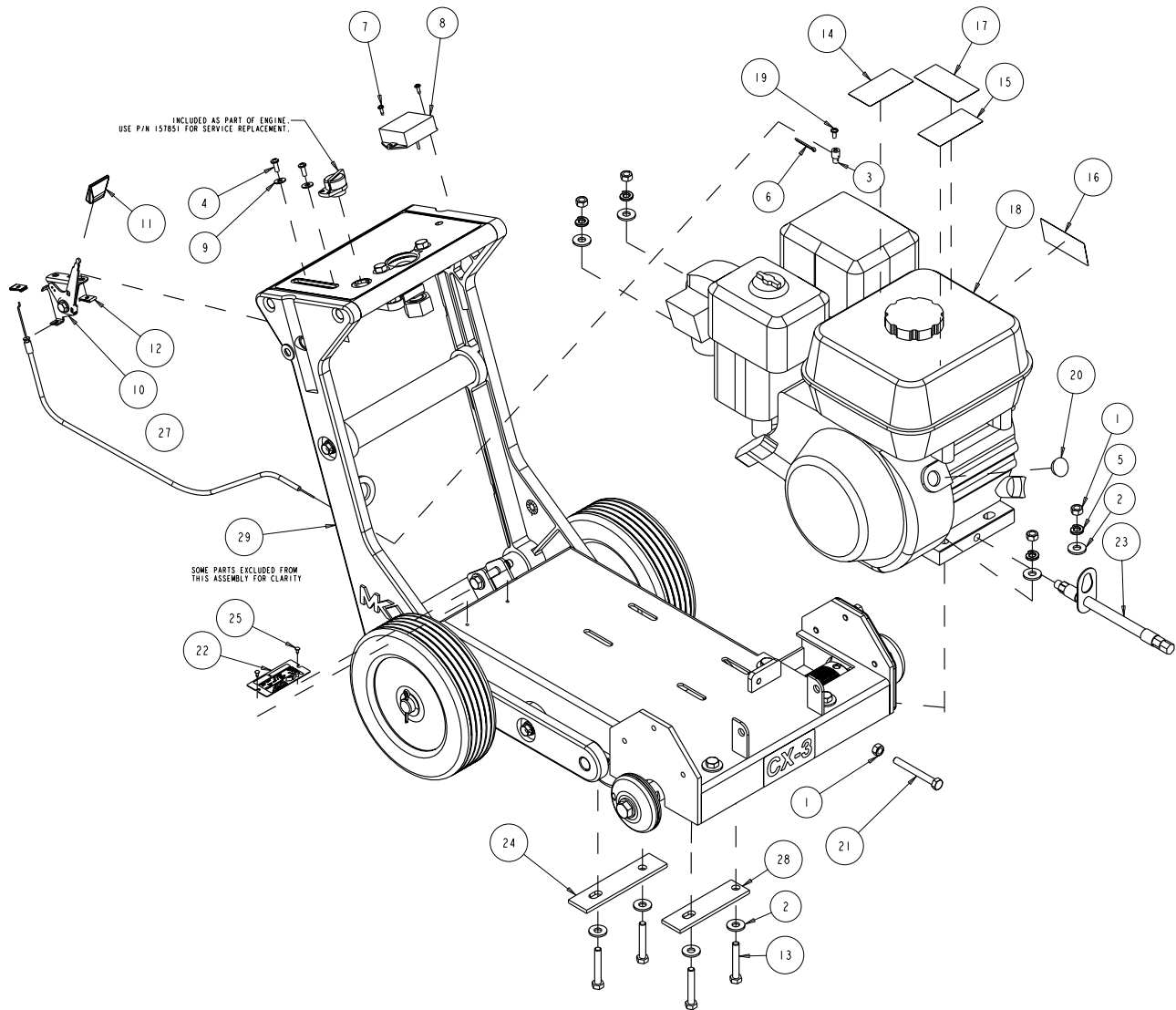


FIGURE 2 - PARTS LIST: MK-CX3 CONC SAW W/GXI60H - P/N 159345

ITEM NO.	DESCRIPTION	PART OR IDENTIFYING NO.	QTY. REQ.
1	NUT, HEX, 5/16-18	101196	5
2	WASHER, 5/16 FLAT CUT	101352	8
3	PIN, THROTTLE CONTROL	151284	1
4	SCREW, 10-24 X 1/2 PAN HEAD PHILLIPS MACHINE	151744	2
5	WASHER, LOCK, SPLIT, 5/16	151747	4
6	PIN, 1/16 X 3/4 COTTER	152518	1
7	SCREW, #6-32 X 3/8 PAN HEAD SELF-TAPPING	153466	2
8	TACHOMETER/HOURMETER	153877	1
9	WASHER, #10 SAE FLAT	154369	2
10	HEAD, THROTTLE CONTROL	155406-1	1
11	KNOB, THROTTLE PADDLE	155406-2	1
12	NUT, 10-24 CLIP	155407	2
13	SCREW, 5/16-18 X 2 HEX HEAD	155494	4
14	LABEL, CAUTION, HOT SURFACE	155578	1
15	LABEL, WARNING, REFUELING	155580	1
16	LABEL, DANGER, CALIFORNIA	155581	1
17	LABEL, DANGER, LETHAL EXHAUST	155582	1
18	ENGINE, HONDA GX160 W/CYC	156282	1
19	SCREW, 8-32 X 3/8 PAN HEAD PHILLIPS	156614	1
20	PLUG, HOLE PLASTIC 3/4"	156615	1
21	BOLT, 5/16-18 X 2-3/4 HEX HEAD TAP	156974	1
22	TAG, SERIAL #, BLANK	157500	1
23	ASSY, OIL DRAIN, 10MM	157577-01	1
24	PLATE, ENGINE BOLT	157847	1
25	DRIVE SCREW, #7 X 5/16 ROUND HEAD	157849	2
26	WIRE HARNESS, CX3	158232	1
27	CABLE, THROTTLE, HONDA	159479	1
28	PLATE, ENGINE BOLT, FRONT	159868	1
29	MK-CX3 LESS ENGINE	165974	1

FIGURE 3 - PARTS LIST: MK-CX3 CONC SAW W/GXI60H - P/N 159345

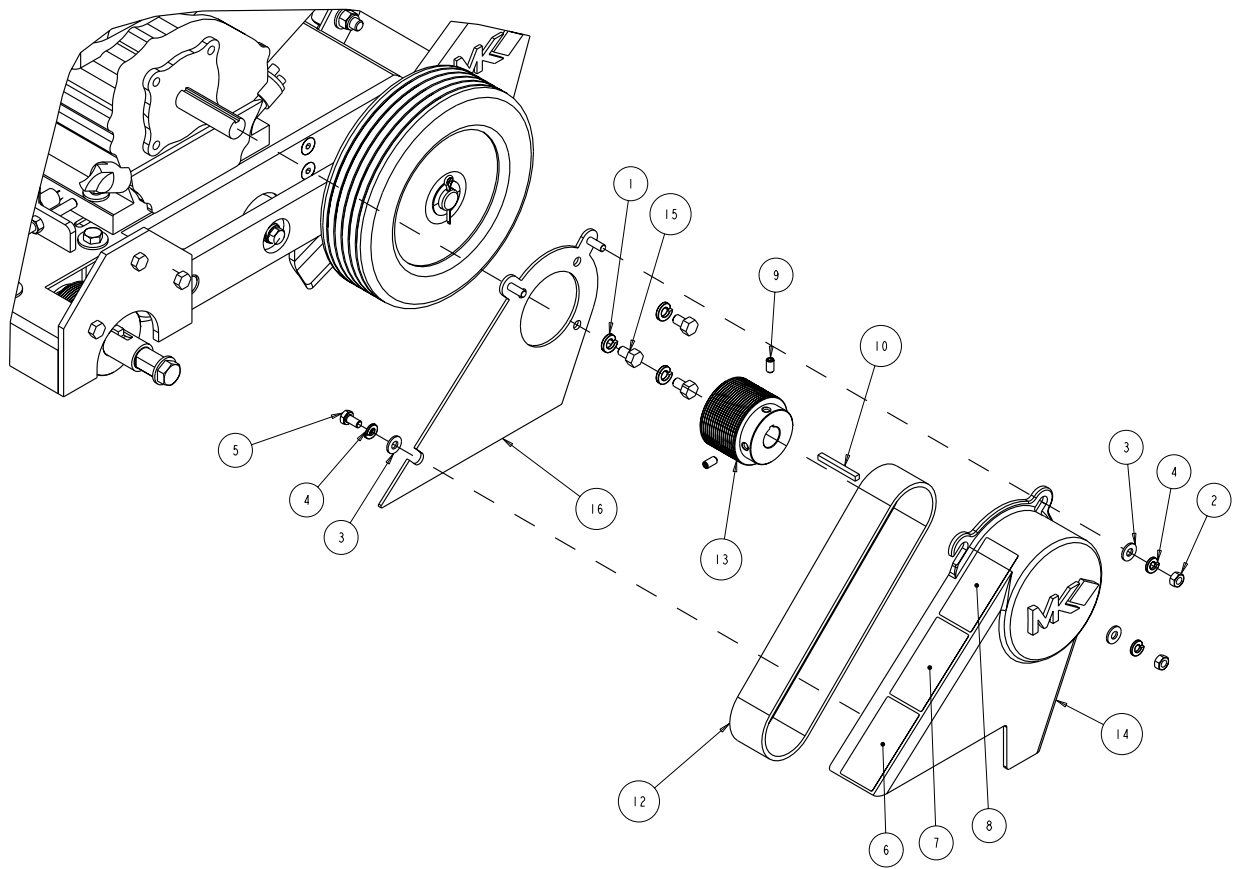


FIGURE 3 - PARTS LIST: MK-CX3 CONC SAW W/GXI60H - P/N 159345

ITEM NO.	DESCRIPTION	PART OR IDENTIFYING NO.	QTY. REQ.
1	WASHER, 5/16 SPLIT LOCK	151747	3
2	NUT, 1/4-20 HEX	151893	2
3	WASHER, 1/4 SAE FLAT	151915	3
4	WASHER, 1/4 SPLIT LOCK	152591	3
5	SCREW, 1/4-20 X 1/2 HEX HEAD	152608	1
6	LABEL, CAUTION, DISCONNCT SPRKPLG	155579	1
7	LABEL, CAUTION, BELT TENSION	155583	1
8	LABEL, CAUTION, GUARDS IN PLACE	155587	1
9	SCREW, 1/4-20 X 1/2 SOCKET HEAD SET	155804	2
10	KEY, 3/16 X 3/16 X 1-3/4	157561	1
11	WIRE HARNESS, CX3	158232	1
12	BELT, MCIRO-V, 240J16	158824	1
13	PULLEY, 16J25 X .75 BORE	158959	1
14	CASTING, BELT GUARD, CX-3 COMP	159021	1
15	SCREW, 5/16-24 X 1/2 HEX HEAD MACHINE	159205	3
16	GUARD, INNER BELT	159250	1

FIGURE 4 - PARTS LIST: MK-CX3 LESS ENGINE - P/N 165974

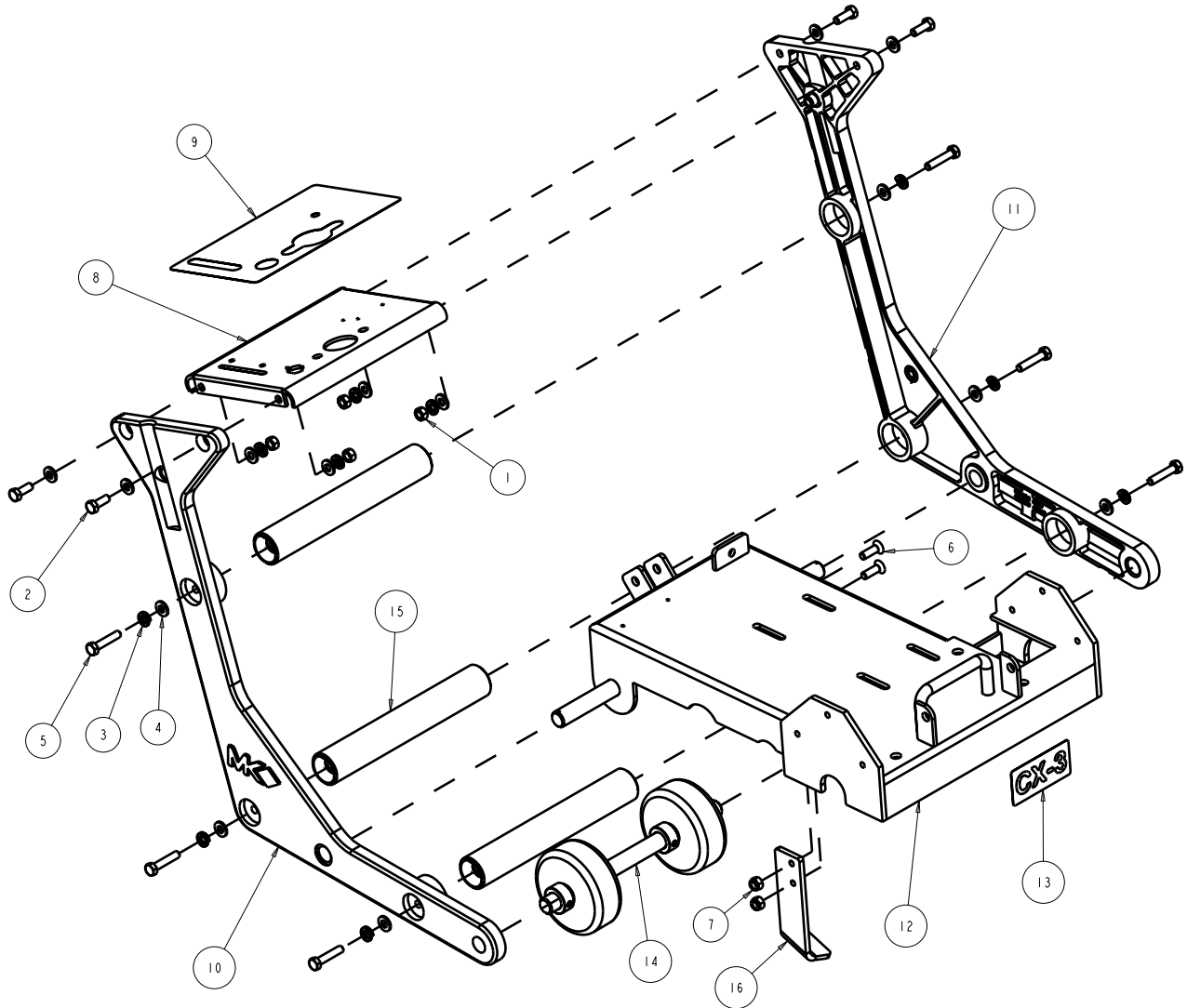


FIGURE 5 - PARTS LIST: MK-CX3 LESS ENGINE - P/N 165974

ITEM NO.	DESCRIPTION	PART OR IDENTIFYING NO.	QTY. REQ.
1	NUT, 5/16-18 HEX	101196	4
2	SCREW, 5/16-18 X 1 HEX HEAD MACHINE	151743	4
3	WASHER, 5/16 SPLIT LOCK	151747	10
4	WASHER, 5/16 SAE FLAT	151754	14
5	SCREW, 5/16-18 X 1-1/2 HEX HEAD MACHINE	152467	6
6	SCREW, 5/16-18 X 1.0 FLAT HEAD SOCKET	155552	2
7	NUT, 5/16-18 NYLOK HEX	158289	2
8	CONSOLE, FRAME	158828	1
9	LABEL, CONSOLE, CX3	159208	1
10	CASTING, FRAME, RIGHT CX3-COMP	159257	1
11	CASTING, FRAME, LEFT CX3-COMP	159259	1
12	TRUCK, CX3	159260	1
13	LABEL, CX3	159482	1
14	ASSY, FRONT AXLE	165975	1
15	ASSY, FRAME SUPPORT	165978	3
16	BRACKET, UP STOP	165998	1

FIGURE 5 - PARTS LIST: MK-CX3 LESS ENGINE - P/N 165974

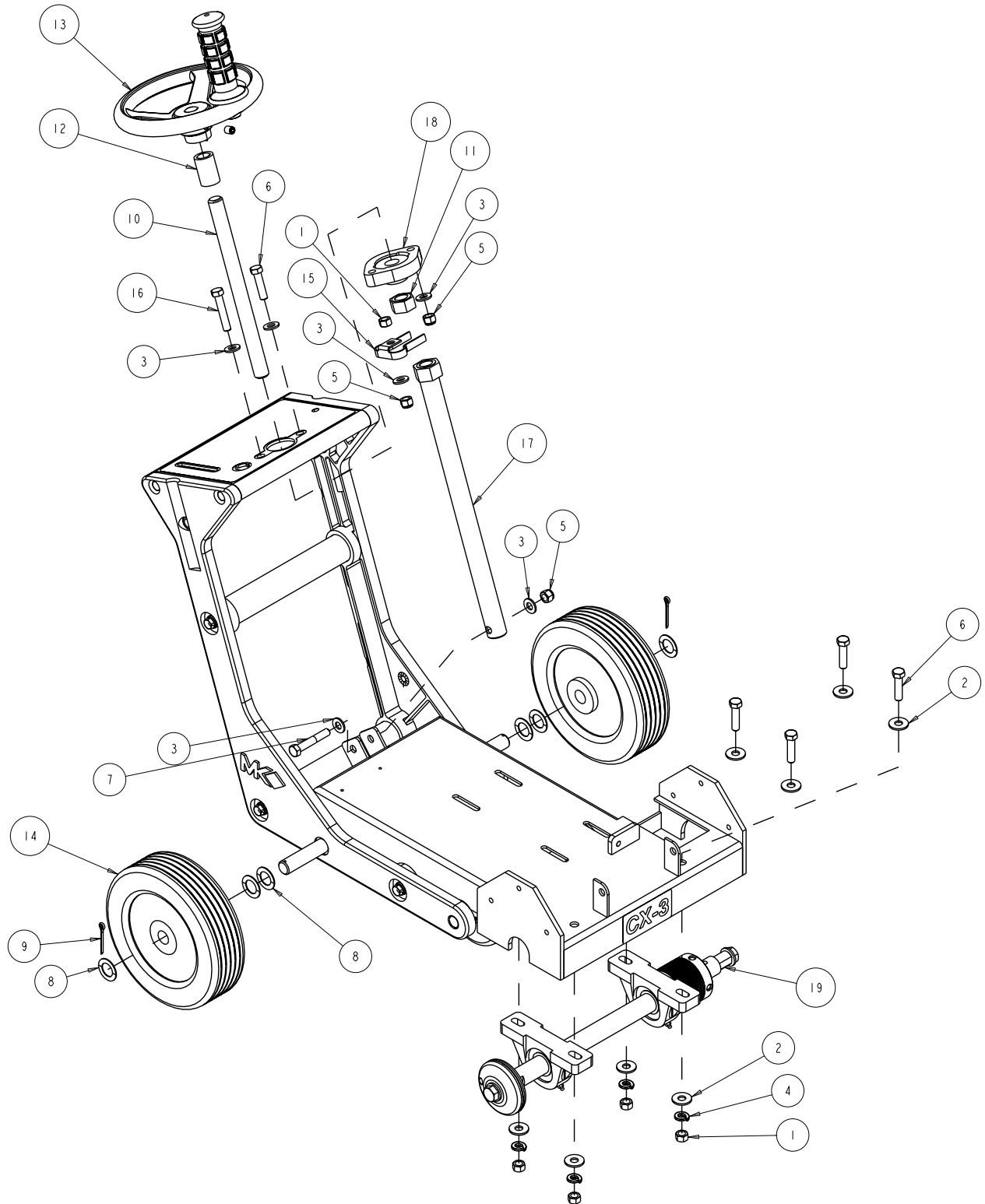


FIGURE 6 - PARTS LIST: MK-CX3 LESS ENGINE - P/N 165974

ITEM NO.	DESCRIPTION	PART OR IDENTIFYING NO.	QTY. REQ.
1	NUT, 3/8-16 HEX	101188	5
2	WASHER, FLAT CUT 3/8	101360	8
3	WASHER, 3/8 SAE FLAT	150923	6
4	WASHER, 3/8 SPLIT LOCK	150925	4
5	NUT, 3/8-16 NYLOK HEX	152505	3
6	SCREW, 3/8-16 X 1-1/2 HEX HEAD	153528	5
7	SCREW, 3/8-16 X 2-1/4 HEX HEAD	153529	1
8	SHIM, .045 THK .750 ID 1.250 OD	153699	6
9	PIN, COTTER 1/8 X 1 1/2	153861	2
10	STUD, 3/4-10 X 10"	155062	1
11	NUT, 3/4-10 HEX	155063	1
12	SPACER, DEPTH CONTROL	155161	1
13	ASSY, CRANK WHEEL, 3/4-10	155457	1
14	WHEEL, REAR 8"	155986	2
15	SPRING, DETENT	156609	1
16	SCREW, 3/8-16 X 2 HEX HEAD	156829	1
17	TUBE, DEPTH CTRL, 3/4-10	165970	1
18	BEARING, FLANGE, 3/4ID, FD204	165971	1
19	ASSY, BLADE SHAFT	165977	1

FIGURE 6 - PARTS LIST: MK-CX3 LESS ENGINE - P/N 165974

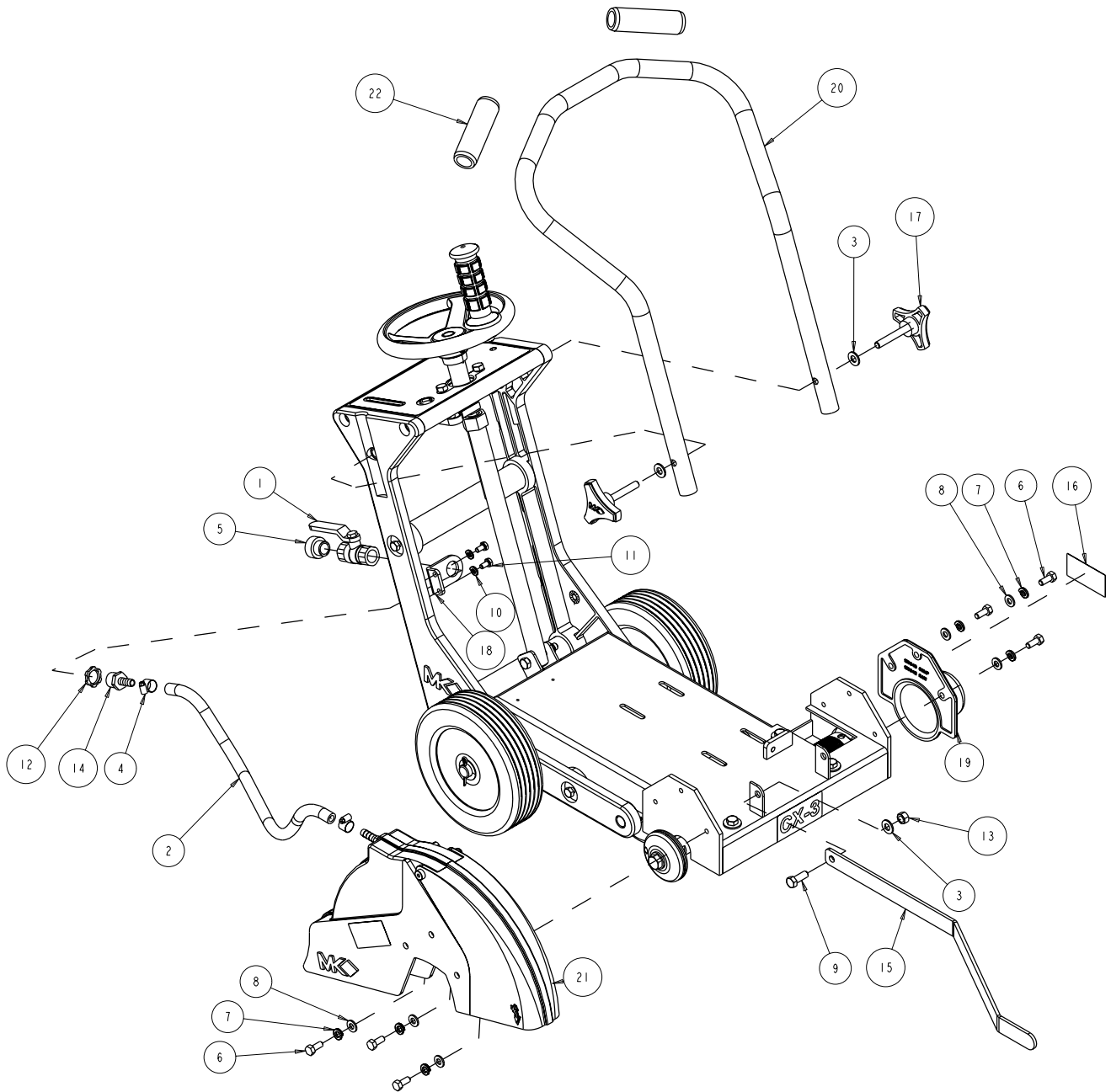
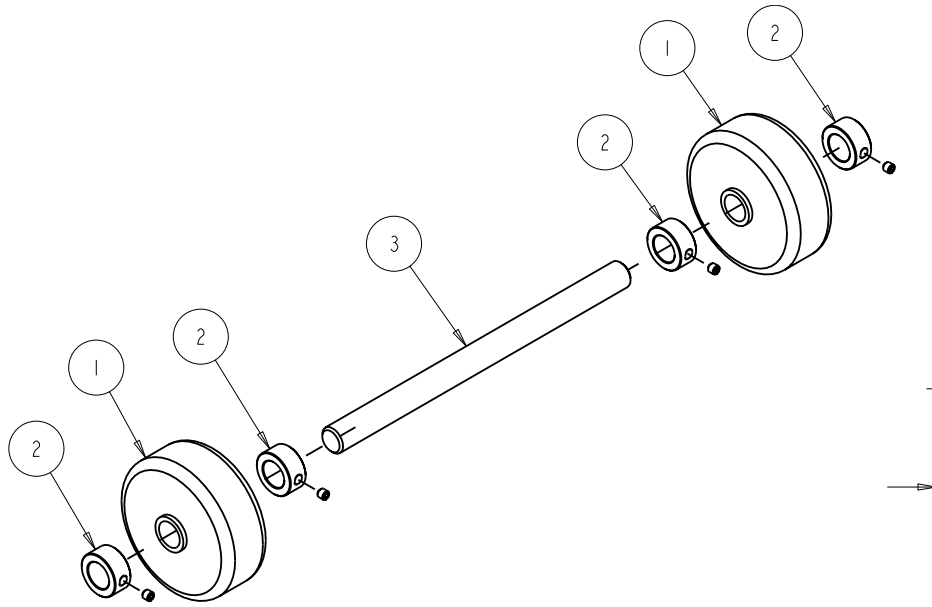


FIGURE 7 - PARTS LIST: MK-CX3 LESS ENGINE - P/N 165974

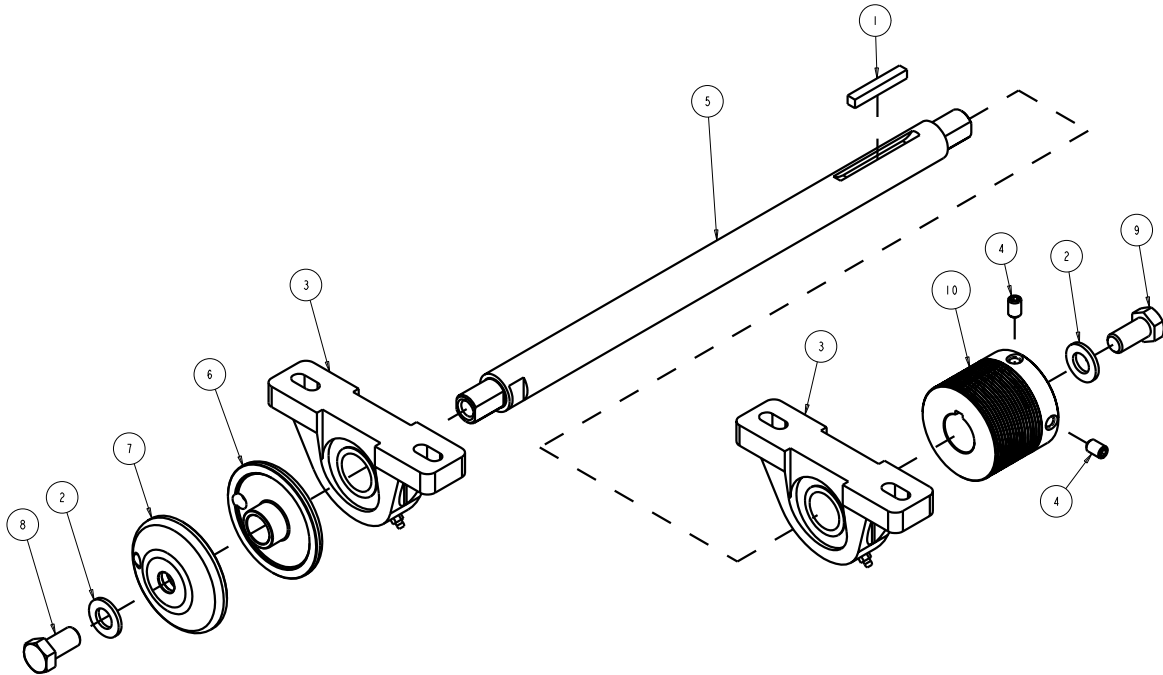
ITEM NO.	DESCRIPTION	PART OR IDENTIFYING NO.	QTY. REQ.
1	VALVE, BALL 1/2"	150843	1
2	HOSE, 3/8 X 5/8 VINYL, 30"	150845-08	1
3	WASHER, 3/8 SAE FLAT	150923	3
4	CLAMP, 5/8 HOSE	151198	2
5	FITTING, 1/2 MNPT X 3/4 FNH	151322	1
6	SCREW, 5/16-18 X 3/4 HEX HEAD MACHINE	151369	3
7	WASHER, LOCK, SPLIT, 5/16	151747	3
8	WASHER, 5/16 SAE FLAT	151754	6
9	SCREW, HEX HD CAP, 3/8-16 X 1	152507	1
10	WASHER, 1/4 SPLIT LOCK	152591	2
11	SCREW, 1/4-20 X 1/2 HEX HEAD	152608	2
12	NUT, LOCK STEEL 1/2" NPT	152729	1
13	NUT, 3/8-16 HEX CENTERLOCK	153522	1
14	FITTING, 1/2 MNPT X 3/8 BARB	153653	1
15	POINTER, ONE-PIECE	155568	1
16	LABEL, CAUTION, GUARDS IN PLACE	155587	1
17	KNOB, TRI	156770-04	2
18	BRACKET, WATER VALVE	158833	1
19	GUARD, SHAFT (COMP)	158843	1
20	HANDLEBAR	158849	1
21	ASSY, 14" BLADEGUARD	165976	1
22	GRIP, HANDLE	229413	2

FIGURE 7 - PARTS LIST: ASSY, FRONT AXLE - P/N 165975



ITEM NO.	DESCRIPTION	PART OR IDENTIFYING NO.	QTY. REQ.
1	WHEEL, FRONT, 04 X 1-1/2W	150830	2
2	COLLAR, SET, 3/4"	153814	4
3	AXLE, FRONT	158862	1

FIGURE 8 - PARTS LIST: ASSY, BLADE SHAFT - P/N 165977



ITEM NO.	DESCRIPTION	PART OR IDENTIFYING NO.	QTY. REQ.
1	KEY, SQUARE, 1/4 X 1-3/4	150796	1
2	WASHER, 1/2 SAE FLAT	150924	2
3	BEARING, PILLOW BLK 1"	155072	2
4	SCREW, 5/16-18 X 3/8 SOCKET HEAD SET	157084	2
5	SHAFT, BLADE	158879	1
6	FLANGE, INNER	158880	1
7	ASSY, FLANGE, OUTER	158881	1
8	SCREW, 1/2-13 X 1 HEX HEAD CAP, LH	159203	1
9	SCREW, 1/2-13 X 1 HEX HEAD CAP	159204	1
10	PULLEY, 16J25 X 1.0 BORE	161136	1

ACCESSORIES, ORDERING AND RETURN INFORMATION

Ordering Information

You may order MK Diamond products through your local MK Diamond distributor or, you may order direct from MK Diamond.

NOTE: There is a \$25.00 minimum order when ordering direct from MK Diamond. All purchases must be made using VISA or MasterCard.

When ordering direct from MK Diamond, please have the following information ready before calling:

- The Model of the machine
- The Serial Number of the machine
- Where the machine was purchased and when
- The Part Number for the part(s) being ordered
- The Part Description for the part(s) being ordered

All parts may be ordered by calling toll free to **(800) 421-5830** or **(310) 539-5221** and asking for Customer Service. For technical questions, call **(800) 474-5594** or **(310) 257-2845**.

Return Materials Policy

To expedite the service relative to the return of a product purchased through MK Diamond, please observe the following:

NOTE: When returning items, they must have been purchased within the previous twelve (12) months.

- Have the Model Number of the machine
- Have the Serial Number of the machine
- Have the location of where the machine was purchased and when
- Contact Customer Service for approval to return the item(s)
- Follow the packaging instructions in the following section
- Ensure your item(s) are prepaid to the destination

For returned items, call toll free to **(800) 421-5830** or **(310) 539-5221** and asking for Customer Service. For technical questions, call **(800) 474-5594** or **(310) 257-2845**.

Packaging Instructions

- Remove the blade guard.
- Dry the machine before shipping.
- Package the unit in its original container or one of comparable size (do not ship the unit partially exposed)
- Ensure all parts are secured in the packaging to prevent moving

Authorized Service Centers

For quicker repair time, you may contact MK Diamond Customer Service, toll free at **(800) 421-5830** or **(310) 539-5221** for the Authorized Service Center closest to you. For technical questions, call **(800) 474-5594**.

CONTACT:

Please contact MK Diamond Products, Inc. Customer Service Department with any questions you might have regarding distributors, parts or service.

Telephone: (800) 845-3729

Fax: (310) 539-5158

E-mail: Customer_Service@MKDiamond.com

Customer Service Hours: Monday through Friday, 6AM-5PM PST

MK Diamond Products, Inc.
1315 Storm Parkway
Torrance, CA 90501

MK DIAMOND PRODUCTS, INC. LIMITED WARRANTY

MK DIAMOND PRODUCTS, INC. will guarantee every machine they build, to be free from defects in material and workmanship for (1) one year from date of purchase. The obligation of MK DIAMOND PRODUCTS, INC. under this warranty is limited to the repair or replacement of any parts which, under normal use, prove to be defective in material or workmanship. The parts involved or the unit in question should be returned to MK DIAMOND PRODUCTS, INC. or to a point designated by us, transportation prepaid.

This warranty does not obligate us to bear the cost of labor or transportation charges in connection with replacement or repair of defective parts. Likewise, it shall NOT apply to any unit which has been subjected to misuse, neglect or accident. This warranty does NOT apply to any machine which has been repaired or altered outside our factory.

This warranty does NOT obligate MK DIAMOND PRODUCTS, INC., with respect to items not of our manufacture, such as engines, motors, hydraulics, etc., which are subject to their own guarantees and warranties.

We shall in no event be liable for consequential damages or contingent liabilities arising out of failure of any equipment or parts to operate properly.

© COPYRIGHT 2007, MK DIAMOND PRODUCTS. INC.

The MK Diamond logo is a registered trademark of MK Diamond Products, Inc. and may not be used, reproduced, or altered without written permission. All other trademarks are the property of their respective owners and used with permission.

This manual MUST accompany the equipment at all times. This manual is considered a permanent part of the equipment and should remain with the unit if resold.

The information and specifications included in this publication were in effect at the time of approval for printing.

MK DIAMOND CX-3, WITH GX160 HONDA ENGINE

PARTS LIST & EXPLODED VIEWS

DOCUMENT NO. I59345-PM

REVISION 202

04/2009



MK Diamond Products, Inc.

MK Diamond Products, Inc.
1315 Storm Parkway
Torrance, CA 90501

Toll-Free: (800) 845-3729
Phone: (310) 539-2221
Fax: (310) 539-5158
www.mkdiamond.com