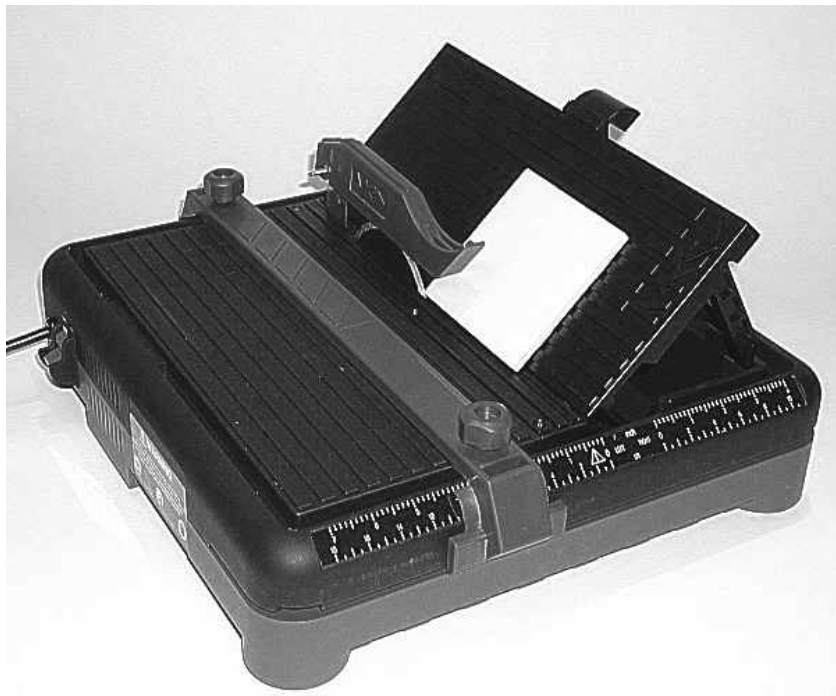




# MK-145 SERIES

TILE SAW  
OWNER'S MANUAL &  
OPERATING INSTRUCTIONS



**CAUTION:**  
READ ALL SAFETY AND  
OPERATING  
INSTRUCTIONS BEFORE  
USING THIS EQUIPMENT.

Enter the Serial Number of your new saw in the space below. The Serial Number is located on the switch side of the unit.

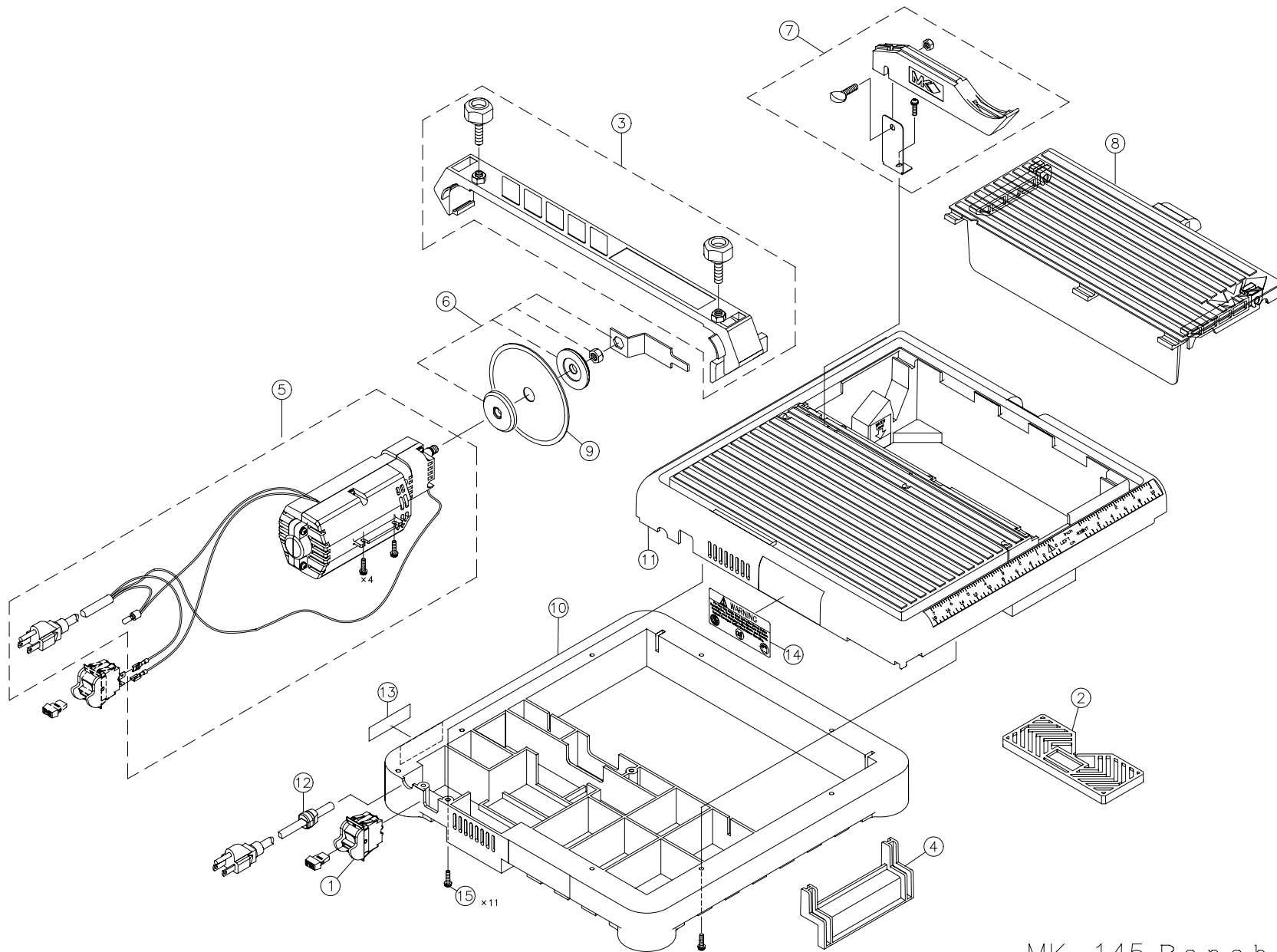
**SERIAL NUMBER:**

**NOTE:**

For your (1) one year warranty to be effective, complete the warranty card (including the Serial Number) and mail it in immediately upon purchase.

# EXPLODED VIEW and PARTS LIST:

## EXPLODED VIEW:



MK-145 Bench

**EXPLODED VIEW and PARTS LIST:****PARTS LIST:**

<b>Number</b>	<b>Kit Name</b>	<b>MK Diamond Part Number</b>
1	Switch	158303
2	Diagonal Cutting Guide	158304
3	Adjustable Cutting Guide	158305
4	Table Stop	158306
5	Motor Assembly	158307
6	Flange Assembly	158308
7	Blade Guard Assembly	158309
8	Cutting Table Cover Assembly	158310
9	Diamond Blade	158311
10	MK-145 Molded Base	158312
11	MK-145 Molded Top	158313
12	Power Cord	158314
13	Warning Label	158315
14	Nameplate Label	158316
15	Mounting Screws (Top to Base)	158317