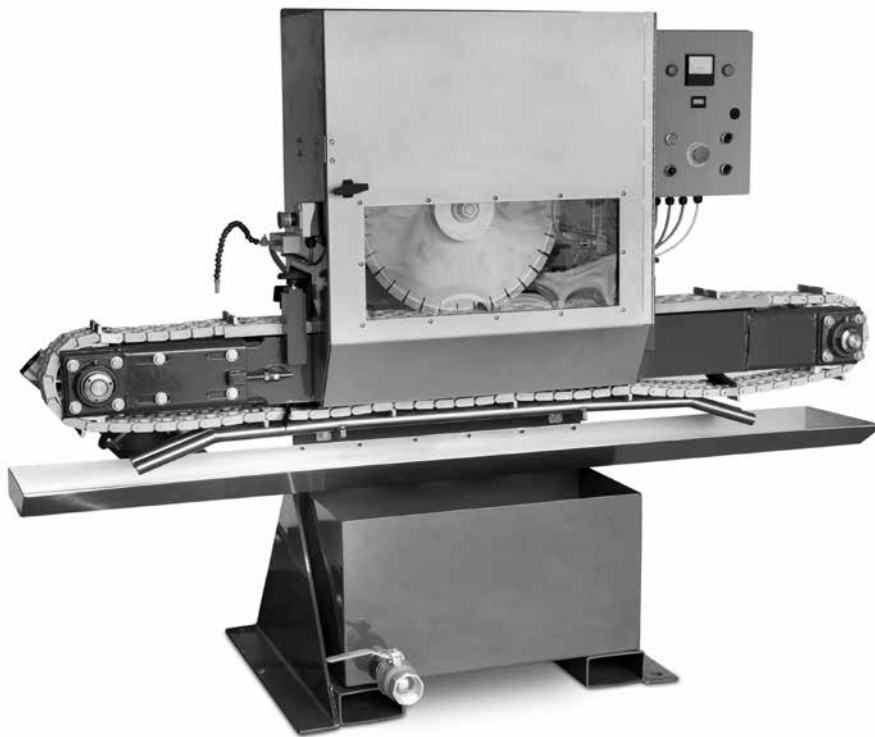


# MASONATOR OWNER'S MANUAL OPERATING INSTRUCTIONS & PARTS LIST



Revision 101	08.2018
Manual Part# 170386	

**Caution:** Read all safety and operating instructions before using this equipment. This parts list **MUST** accompany the equipment at all times.

## INTRODUCTION

Congratulations on your purchase of a Masonator. We are certain that you will be pleased with your purchase. MK Diamond takes pride in producing the finest construction power tools and diamond blades in the industry.

Operated correctly, your Masonator should provide you with years of service. In order to help you, we have included this manual. This Owner's Manual contains information necessary to operate and maintain your Masonator safely and correctly. Please take the time to familiarize yourself with the Masonator by reading and reviewing this manual.

Read and follow all safety, operating and maintenance instructions.

If you should have questions concerning your Masonator, please feel free to call our friendly customer service department at: 800 421-5830

Regards,

MK Diamond

### NOTE THIS INFORMATION FOR FUTURE USE:

<b>MODEL NUMBER:</b>	
<b>SERIAL NUMBER:</b>	
<b>PURCHASE PLACE:</b>	
<b>PURCHASE DATE:</b>	

**NOTE:** For your (1) one year warranty to be effective, complete the warranty card (including the serial number) and mail it in as soon as possible.


## TABLE OF CONTENTS

<b>SAFETY</b>	<b>Pages</b>
Safety Messages	4
Damage Prevention Message	4
General Safety Precautions	4-7
California Proposition 65 Message	8
Electric Safety	9
 <b>WIRE DIAGRAM</b>	
Wire Diagram	10
Electronics Cabinet	11
 <b>OPERATION</b>	
Operation	12-13
 <b>EXPLODED VIEW AND PARTS LIST</b>	
Exploded View & Parts List	14-21
 <b>ORDERING and RETURN INSTRUCTIONS</b>	
Ordering Information	22
Return Material Policy	22
Packaging Instructions	22
Authorized Service Centers	22
 <b>CONTACT and LIMITED WARRANTY</b>	
Contact	23
Limited Warranty	23

Read and follow all safety, operating and maintenance instructions. Failure to read and follow these instructions could result in injury or death to you or others. Failure to read and follow these instructions could also result in damage and/or reduced equipment life. Safety warnings and guidelines do not by themselves eliminate danger. They are not substitutes for proper accident prevention procedures and good judgement.

## SAFETY MESSAGES

---

A safety message alerts you to potential hazards that could hurt you or others. Each safety message is preceded by a safety alert symbol (  ) and one of three words: **DANGER**, **WARNING**, or **CAUTION**.



**DANGER** You **WILL** be **KILLED** or **SERIOUSLY INJURED** if you **DO NOT** follow directions.



**WARNING** You **CAN** be **KILLED** or **SERIOUSLY INJURED** if you **DO NOT** follow directions.



**CAUTION** You **CAN** be **INJURED** if you **DO NOT** follow directions. It may also be used to alert against unsafe practices.

## DAMAGE PREVENTION AND INFORMATION MESSAGES

---

A Damage Prevention Message is to inform the user of important information and/or instructions that could lead to equipment or other property damage if not followed. Information Messages convey information that pertains to the equipment being used. Each message will be preceded by the word **NOTE**, as in the example below.

**NOTE:** Equipment and/or property damage may result if these instructions are not followed.

## GENERAL SAFETY PRECAUTIONS AND HAZARD SYMBOLS

---

In order to prevent injury, the following safety precautions and symbols should be followed at all times!



**ALWAYS** read this Owner's Manual before operating the machine. **DO NOT** operate or service this equipment before reading this entire manual. Read and understand all warnings, instructions and controls on the machine. Know how to stop the equipment quickly in case of emergency. It is the operators responsibility to use this machine under safe working conditions and conform with federal, state and local codes or regulations pertaining to safety, air, pollution, noise etc...



**ALWAYS** keep the Blade and Belt Guards in place. **DO NOT** operate this machine with any guard or safety device removed. A Guard, or any damaged part should be repaired or replaced immediately.



**NEVER** operate this equipment without proper protective clothing, shatterproof glasses, steel-toed boots and other protective devices required by the job. Non-slip foot wear is recommended.

**PERSONAL PROTECTIVE EQUIPMENT**

**ALWAYS** wear approved respiratory, head, ear and eye protection when operating this machine.

**ACCIDENTAL STARTS!**

Before starting the engine/motor, be sure the **ON/OFF** switch is in the **OFF** position to prevent accidental starting. Place the **ON/OFF** switch in the **OFF** position before performing any service operation. **ALWAYS** place the power **ON/OFF** switch in the **OFF** position when the machine is not in use.

**ROTATING PARTS**

Keep hands, feet, hair, and clothing away from all moving parts to prevent injury. Never operate the motor with covers, shrouds, or guards, removed.

**HOT PARTS!**

Engine components can become extremely hot from operation. To prevent severe burns, do not touch these areas while the engine is running, or immediately after it is turned off. Never operate the engine with heat shields removed.

**OVER SPEED**

**NEVER** tamper with the governor components or settings to increase the maximum speed. Severe personal injury and damage to the engine or equipment can result if operated at speeds above maximum.

**ELECTRICAL SHOCK**

**NEVER** touch electrical wires or components while the engine is running. Exposed, frayed or worn electrical wiring and plugs can be sources of electrical shock which could cause severe injury or burns. Do not touch the plug with wet hands.



**ALWAYS** avoid inhalation of and skin contact with silica dust and/or mist. Provide proper dust removal. Use dust-collection system when applicable.



**NEVER** operate the machine in an explosive atmosphere or near combustible materials. Sparks from the cutting-action of this machine can ignite flammable materials, liquids, gases or dust.



This equipment should not be operated by persons under 18 years of age.

**KEEP CHILDREN AWAY**

All visitors and children should be kept a safe distance from work area. Maintain a safe operating distance to other personnel.

**MAKE THE WORKSHOP KID PROOF**

Make the workshops kid proof by using padlocks, master switches or by removing starter keys.

**DO NOT FORCE THE TOOL**

A power tool will do a job better and safer operating at the rate for which it was designed. **DO NOT** force a tool or an attachment to do a job that it was not designed to do.

**USE PROPER APPAREL**

**DO NOT** wear loose clothing, gloves, neckties, rings, bracelets, or other jewelry that may be caught in moving parts. Non-slip footwear is recommended. Wear protective hair covering to contain long hair.

**SECURE WORK**

Clamps or a vise should be used to hold work whenever practical. Keeping your hands free to operate a power tool is safer.

**DO NOT OVERREACH**

Keep proper footing and balance at all times by not overreaching.

**DISCONNECT TOOLS**

Power tools should always be disconnected before servicing, adjusting or when changing accessories, such as blades, bits, cutters, and the like.

**MAINTAIN TOOLS WITH CARE**

Keep tools clean and maintained for the best and safest performance. Always follow maintenance instructions and examine the machine before use. If any abnormal vibrations or noises occurs, turn off machine immediately and have the problem corrected before further use.

**REMOVE ADJUSTING KEYS AND WRENCHES**

Form a habit of checking to see that keys and adjusting wrenches are removed from the power tool before it is turned on.

**KEEP WORK AREA CLEAN**

Cluttered work areas and benches invite accidents. Keep area around machine clear of obstructions which could cause persons to fall.

**DO NOT USE IN DANGEROUS PLACES**

**DO NOT** operate equipment in dangerous or hazardous environments. **DO NOT** use power tools in damp or wet locations nor expose them to rain. Always keep the work area well lighted.

**USE RECOMMENDED ACCESSORIES**

Consult the owner's manual for recommended accessories. Using improper accessories may increase the risk of personal or by-stander injury. Unauthorized equipment modifications will void all warranties. Manufacturer does not assume responsibility for any accident due to equipment modifications.



**ALWAYS** ensure that the machine is on level ground before using.

**NEVER STAND ON THE TOOL**

Serious injury could occur if a power tool is tipped, or if a cutting tool is unintentionally contacted.

**TRANSPORT**

When loading or unloading the machine, use caution. Remove the blade prior to hoisting, loading and transporting the machine.

**CHECK FOR DAMAGED PARTS**

Before using a power tool, check for damaged parts. A guard or any other part that is damaged should be carefully checked to determine if it would operate properly and perform its intended function. Always check moving parts for proper alignment or binding. Check for broken parts and mountings and all other conditions that may affect the operation of the power tool. A guard, or any damaged part, should be properly repaired or replaced. Always check the machine for loose bolts before starting.

**DIRECTION OF ROTATION**

A blade or cutter should always be installed so that rotation is in the direction of the arrow imprinted on the side of the blade or cutter. It should correspond with the rotational direction of the motor. Always feed work into a blade against the direction of rotation.

**NEVER LEAVE A TOOL UNATTENDED**

**TURN POWER OFF** - Do not leave a tool until it comes to a complete stop. **ALWAYS** turn a power tool **OFF** when leaving the work area, or, when a cut is finished.



**NEVER** disconnect any "emergency or safety devices". These devices are intended for operator safety. Disconnection of these devices can cause severe injury, bodily harm, or even death! Disconnection of any of these devices will void all warranties. Unauthorized equipment modifications will void all warranties. Manufacturer does not assume responsibility for any accident due to equipment modifications.



**NEVER** use this machine with any cutter designed for woodworking.



**NEVER** operate this equipment when not feeling well due to fatigue, illness or taking medicine.



**NEVER** operate this equipment under the influence of drugs or alcohol.



On belt driven equipment, overtensioning of belts will result in premature crank and/or bearing failure.



Whenever necessary, replace nameplate, operation and safety decals when they become difficult to read.



**ALWAYS** store equipment properly when it is not being used. Equipment should be stored in a clean, dry location out of the reach of children



**DO NOT** lend or rent this equipment without including the Owner's Manual and the Engine/Motor Manufacturer's Manual.



Check the chemical properties of the material to be cut/grinded and follow all EPA/OSHA Regulations. (cut/ground)

## **SILICA DUST WARNING**

---

Grinding/cutting/drilling of masonry, concrete, metal and other materials with silica in their composition may give off dust or mists containing crystalline silica. Silica is a basic component of sand, quartz, brick clay, granite and numerous other minerals and rocks. Repeated and/or substantial inhalation of airborne crystalline silica can cause serious or fatal respiratory diseases, including silicosis. In addition, California and some other authorities have listed respirable crystalline silica as a substance known to cause cancer. When cutting such materials, always follow respiratory precautions.

Use appropriate NIOSH-approved respiratory protection where dust hazard may occur. Paper masks or surgical masks without a NIOSH approval number are not recommended because they do little to protect the worker. For more information about respirator programs, including what respirators have received NIOSH approval as safe and effective, please visit the NIOSH website at:

<http://www.cdc.gov/niosh/topics/respirators>

Observe OSHA regulations for respirator use (29 C.F.R. §1910.134).

Visit <http://www.osha.gov> for more information.

## **CALIFORNIA PROPOSITION 65 MESSAGE**

---

Some dust created by power sanding, sawing, grinding, drilling, and other construction activities contain chemicals known (to the State of California) to cause cancer, birth defects or other reproductive harm. Some examples of these chemicals are:

- Lead, from lead-based paints
- Crystalline silica, from bricks and cement and other masonry products
- Arsenic and chromium, from chemically treated lumber

For further information, consult the following sources:

<http://www.osha.gov/dsg/topics/silicacrystalline/index.html>

<http://www.cdc.gov/niosh/docs/96-112/>

<http://oehha.ca.gov/prop65/law/P65law72003.html>

<http://www.dir.ca.gov/Title8/sub4.html>

<http://www.P65warnings.ca.gov>

Your risk from these exposures varies depending on how often you do this type of work. To reduce your exposure to these chemicals, work in a well-ventilated area, and work with approved safety equipment, such as dust masks that are specially designed to filter out microscopic particles. Where use of a dust extraction device is possible, it should be used. To achieve a high level of dust collection, use an industrial HEPA vacuum cleaner. Observe OSHA 29 CFR part 1926.57 and 1926.103.

## ELECTRIC MOTOR SAFETY

---

For maintenance care and operation of the electric motor, refer to your electric motor instruction booklet furnished with the electric motor. Protect the electric motor from dust as much as possible and keep ventilating openings clean. Before plugging in the machine, make sure that the outlet voltage is within the voltage marked on the machine's data plate.



### CAUTION



**DO NOT** spray water on the electric motor. **DO NOT** touch the plug with wet hands. To reduce the risk of electrocution, keep all connections dry and off the ground.



**DO NOT** operate electric motor in an explosive environment.



### DO NOT EXPOSE TO RAIN

**DO NOT** expose to rain or use in damp locations.



### WARNING



If operating the equipment in damp locations is unavoidable, **ALWAYS** use a Ground Fault Circuit Interrupter, **ALWAYS** wear rubber gloves and footwear in damp conditions.



**DO NOT** abuse the cord. Never use the cord to carry the equipment or to pull the plug from the outlet. Keep the cord away from heat, sharp edges, and moving parts. Replace damaged cords immediately. Damaged cords increase the risk of electric shock.



### WARNING

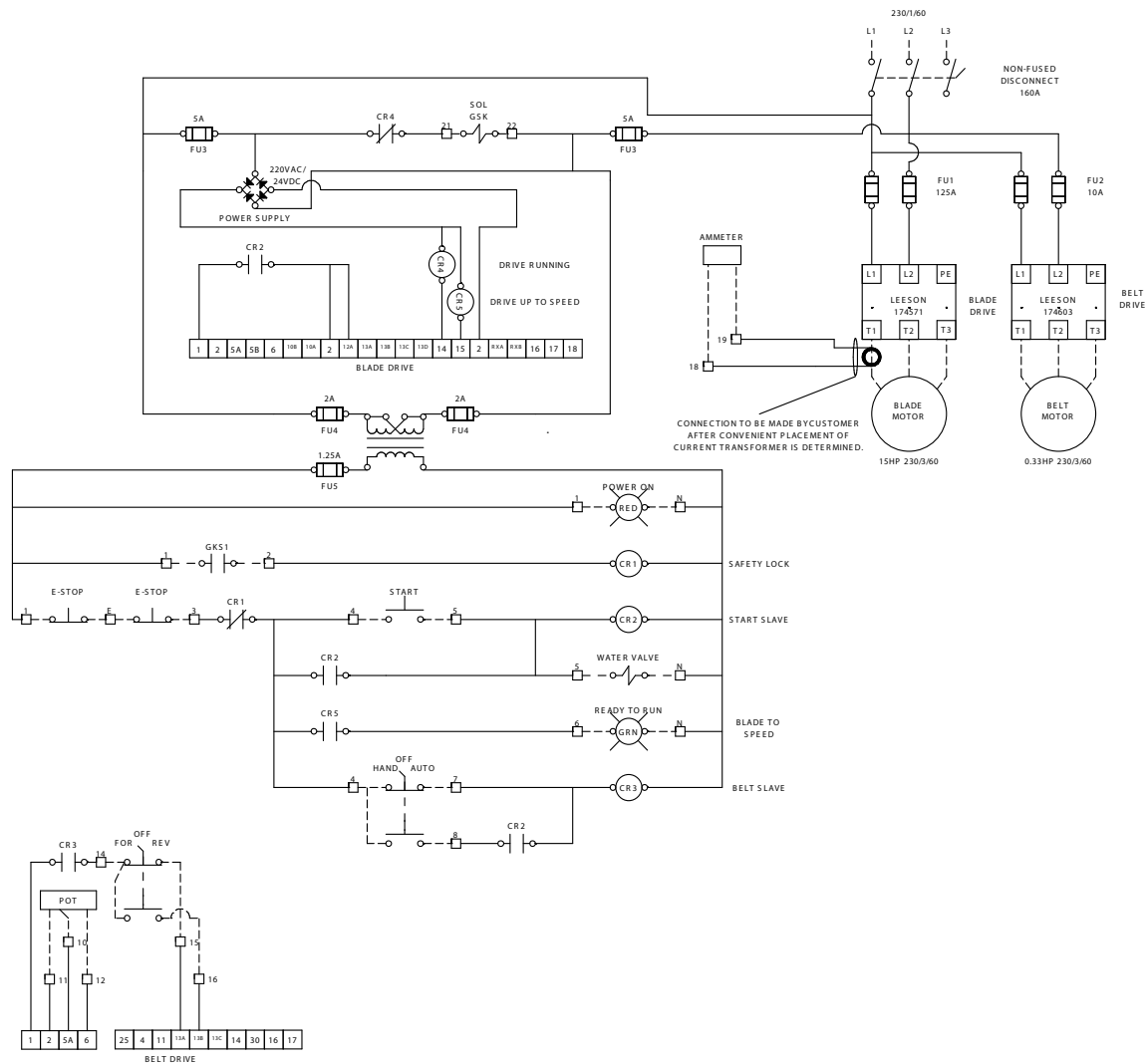
To reduce the risk of electrocution, keep all connections dry and off the ground. A Ground Fault Circuit Interrupter (GFCI) should be provided on the circuit(s) or outlet(s) to be used for this machine. Receptacles are available having built-in GFCI protections and may be used for this measure of safety. When using an extension cord, GFCI should be installed closest to the power source, followed by the extension cord and lastly, the machine.

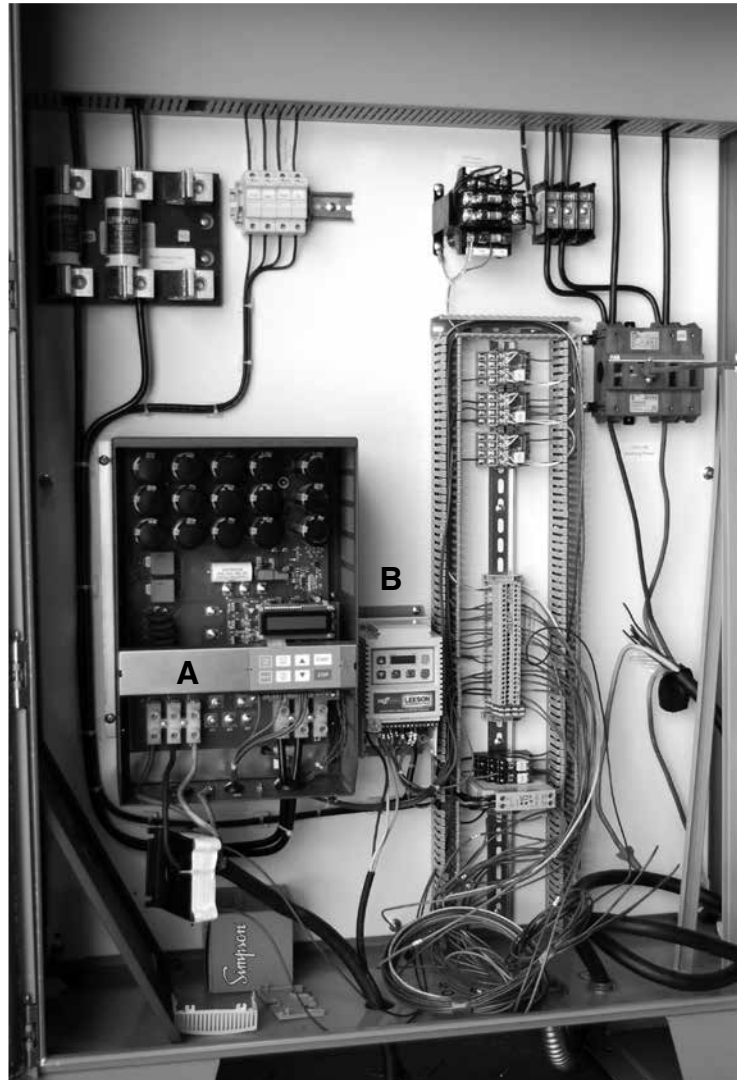


### WARNING

The water pump requires a GFCI. To reduce risk of electrical shock when operating the machine with the pump plugged into the 3-pole receptacle on the motor, connect the machine to a GFCI outlet. See the pump manual and informational tags enclosed separately for all pump information.

# WIRE DIAGRAM



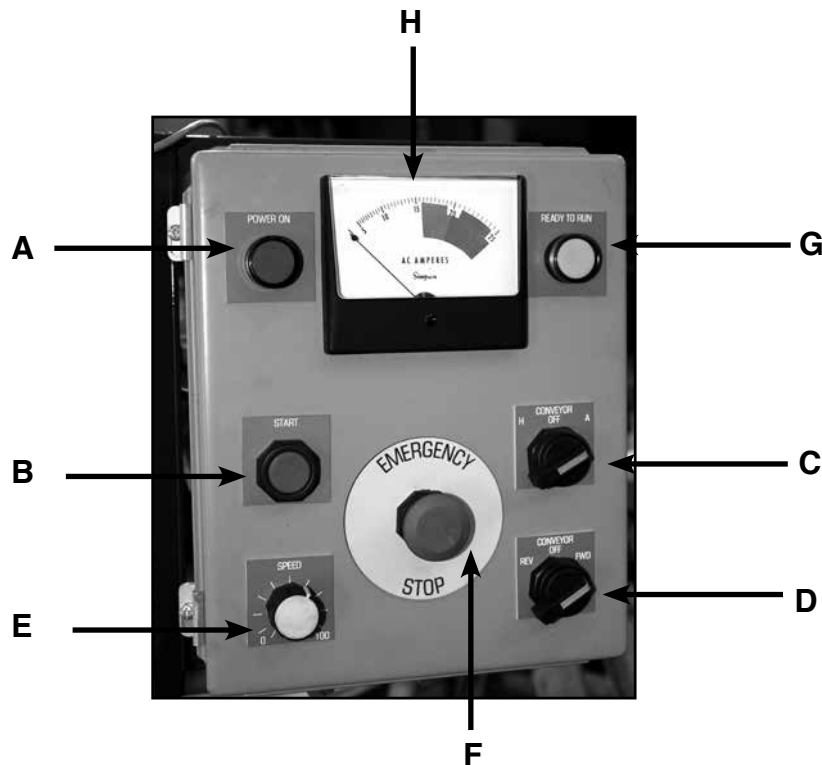
**A** Blade Drive Parameters:

P28 = Manual  
P29 = Keypad  
P30 = Remote  
P52 = Run  
P53 = @Speed

**B** Belt Drive Parameters:

P100 = 1  
P101 = 1  
P112 = 1  
P121 = 13  
P122 = 14

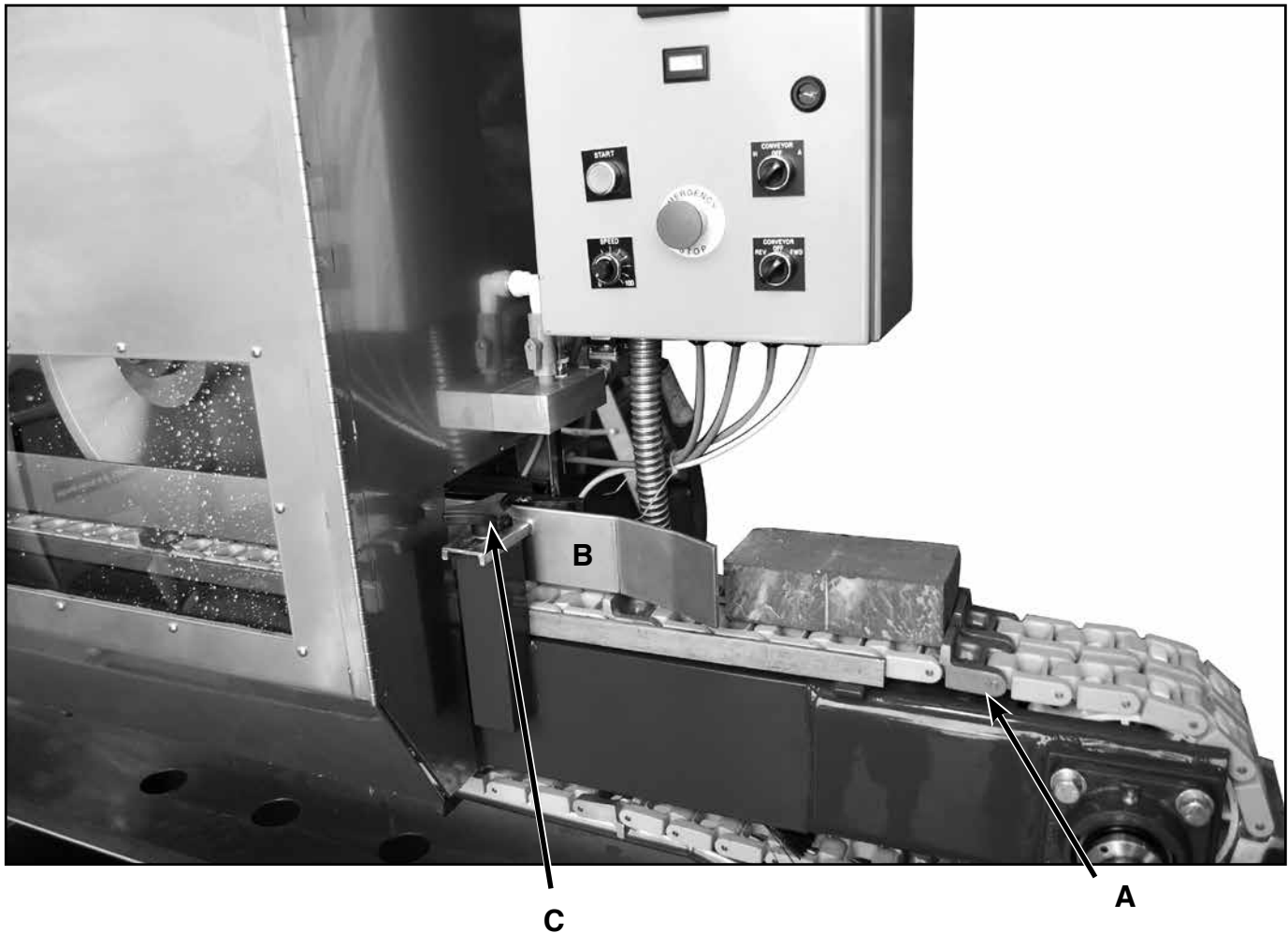
## OPERATION



<b>A</b>	Power light	light is on when there is power to the saw
<b>B</b>	Start Button	15 HP Blade motor starts Water valve solenoid activates If conveyor switch is in Auto, the conveyor 1/3 HP motor starts Ready to Run light comes on, when Blade motor is up to speed (soft start)
<b>C</b>	Conv H-A	H position: the conveyor can run regardless if the Blade motor is running or not A position: the conveyor will run when the blade motor is running OFF: the conveyor motor stops
<b>D</b>	Conv R-F	R position: the conveyor motor will move the conveyor in reverse F position: the conveyor will move the conveyor forward OFF: the conveyor motor stops
<b>E</b>	Conveyor Speed	0 - 100, adjusts the desired speed of conveyor
<b>F</b>	Emergency Stop	will stop all motors and conveyors
<b>G</b>	Ready to Run	indicates the saw is ready to run & the start button can be used
<b>H</b>	AMP Meter	indicates the amps the blade motor is pulling

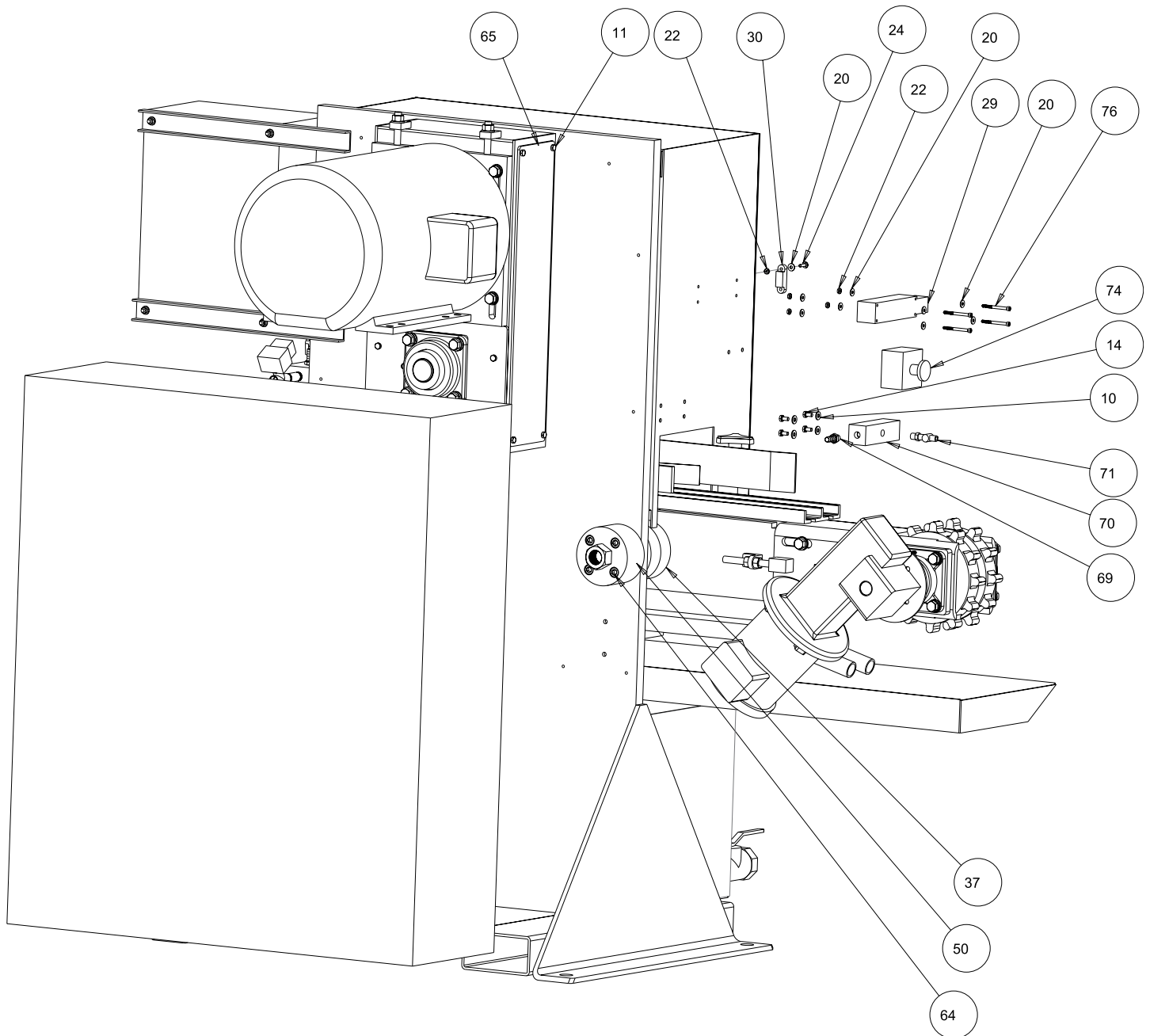
Interlock switch, when power is ON and the key engaged both motors can start or keep running. When the key is remove or there is no power, the motors can not start or stop running.

**NOTE:** The power must be ON in order to open the door.

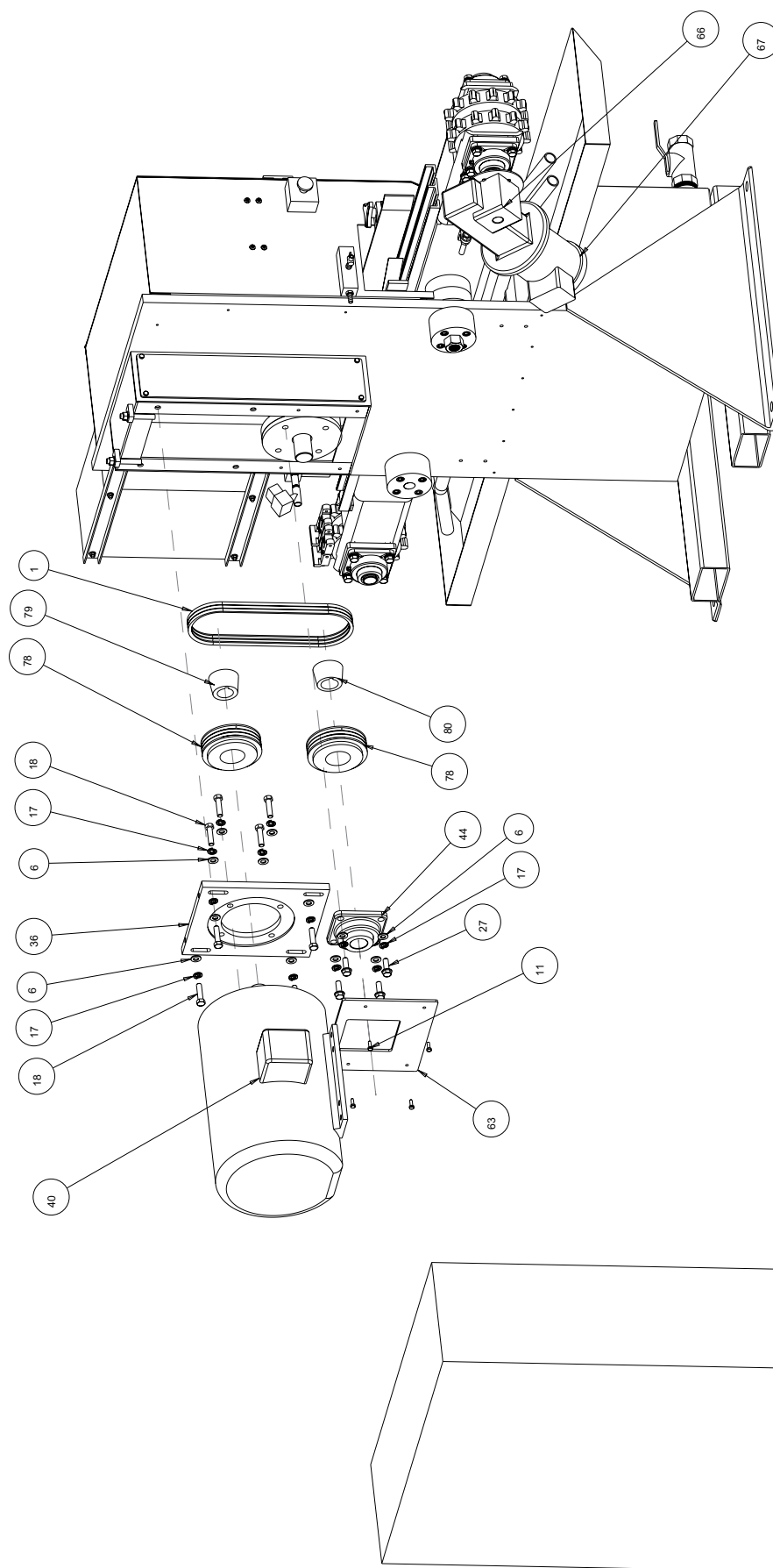


<b>A</b>	Pusher Link
<b>B</b>	Brick Guide
<b>C</b>	Tri-Knobs

1. Place brick on conveyor track. Ensure brick is positioned against pusher links.
2. Adjust brick guide for desired veneer thickness by loosening the two plastic tri-knobs on either side of the blade. Slide brick guide to desired thickness from the blade and tighten tri-knobs.



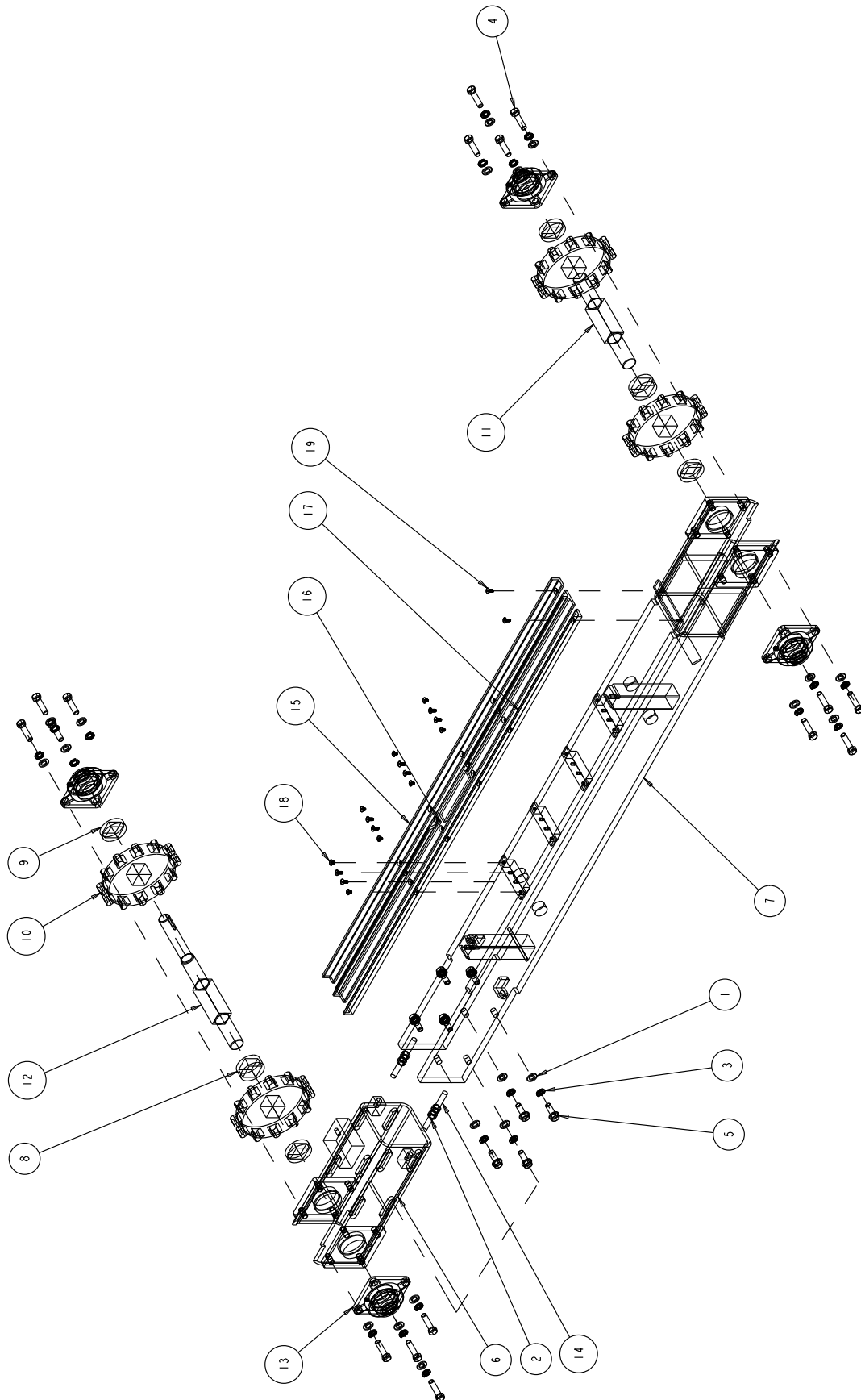




Item	Description	Part #	Qty
1	BELT, 3VX425	138172	3
2	NUT, 1 - 14 LEFT HAND	138701	1
3	SCREW, HEX HEAD, 1/4 - 20 X 5/8	150404	4
4	SCREW, 3/8 - 16 X 1 -1/4 HEX HEAD CAP	150774	8
5	WASHER, FLAT, SAE, 3/8	150923	15
6	WASHER, 1/2 SAE FLAT	150924	22
7	WASHER, LOCK, SPLIT, 3/8	150925	4
8	NUT, 1/2 - 13 HEX	151282	2
9	NUT, HEX, 1/4 - 20	151893	4
10	WASHER, FLAT, SAE, 1/4	151915	32
11	SCREW, HEX, HD, 1/4 - 20 X 3/4	152370	14
12	SCREW, 1/4 - 20 X 3/4 SOCKET HEAD CAP	152587	4
13	WASHER, LOCK, SPLIT, 1/4	152591	32
14	SCREW, 1/4 - 20 X 1/2 HEX HEAD	152608	8
15	SCREW, HEX HD, TAP, 1/4 - 20 X 1	152676	6
16	BLADE, 20"	153327	1
17	WASHER, 1/2 SPLIT LOCK	153524	20
18	SCREW, HEX HD 1/2 - 13 X 2	153533	12
19	WASHER, #10 SPLIT LOCK	153684	6
20	WASHER, FLAT, SAE, #10	154369	10
21	SCREW, 1/4 - 20 X 3.4 FLAT HEAD PHILLIPS MACHINE	154657	6
22	NUT, HEX 10 - 32	156269	6
23	KNOB, TRI PLASTIC NO LOGO, 1" LG.	156770-01-NL	2
24	SCREW, TRUSS 10 - 32 X 3/4	157526	1
25	ELBOW, 90 DEG. STREET, 3/8, NYLON	157895	1
26	VALVE, BALL MINI, PVC, 3/8 X 3/8	157898	1
27	SCREW, 1/2 - 13 X 1 -1/2 HEX FLANGE HEAD, RIGHT HAND	160819	8
28	PAN HEAD PHILLIPS 8 32 X 3/4" SEALING	166257	12
29	INTERLOCK SWITCH	168000	1
30	ACTUATOR	168007	1
31	BLADE HOUSING	170029	1
32	TRAY	170030	1
33	HOLDER, GUIDE	170036	1
34	HOLDER, FINGER	170037	1
35	BASE, WELDMENT	170038	1
36	PLATE, MOTOR MOUNT	170041	1
37	SPACER	170042	4
38	STUD, 1 - 1/8 - 12 X 13.75"	170059	2
39	GUIDE, ADJUSTABLE	170060	1
40	MOTOR	170063	1
41	BLADE FLANGE	170064	1
42	BLADE, SHAFT	170065	1
43	FLANGE BLADE NUT	170066	1

Item	Description	Part #	Qty
44	BEARING, BLADE SHAFT	170067	2
45	WINDOW, MASONATOR	170069	1
46	GASKET, WINDOW	170070	1
47	ARBOR HOUSING	170074	1
48	COVER, ARBOR HOUSING	170075	1
49	NUT, HEX 1 - 1/8 - 12	170104	3
50	SPACER	170106	2
51	TRACK SUPPORT, BOTTOM	170113	1
52	TANK, WATER	170116	1
53	VALVE, BALL 2" NPT FEMALE	170118	1
54	FINGER	170119	7
55	STUD, 1/2 - 13 X 3 - 1/2	170127	2
56	WATER MANIFOLD	170167	1
57	ASSEMBLY, WATER DELIVERY	170168	1
58	HANDLE, TEE CAM LATCH	170170	1
59	PIPE NIPPLE 3/8 MNPT 2-1/2	170174	1
60	MALE PIPE BRANCH TEE 3/8 MNPT TO 3/8 BARB	170176	1
61	SOLENOID VALVE 3/8	170177	1
62	PAD, TANK	170224	2
63	COVER, ARBOR HOUSING	170225	1
64	SHCS 1/2 - 13 X 2 - 3/4	170226	8
65	COVER	170227	1
66	GEAR REDUCER, GROVE 110.9: 1.0	170246	1
67	MOTOR, 1/3 HP	170247	1
68	TORQUE ARM KIT	170250	1
69	ADAPTOR, MALE PIPE 1/4 NPTF	170260	2
70	EXIT, WATER MANIFOLD	170261	1
71	ASSY, LOC - LINE	170262	1
72	ELECTRONICS CABINET	170263	1
73	ELECTRICAL CONTROL PANEL	170264	1
74	E-STOP BOX	170265	1
75	ASSEMBLY, TRACK SUPPORT	170318	1
76	SHCS, 10 - 32 X 2 - 1/4	170318	1
77	SHCS, 3/8 - 16 X 3/8	170331	7
78	SHEAVE, MARTIN 3 3V 600 TB	170379	2
79	BUSHING, TAPER LOCK 2517, 1 - 5/8" BORE	170380	1
80	BUSHING, TAPER LOCK 2517, 1 - 3/4" BORE	170381	1
81	KNOB, ADJUSTMENT	170382	1
82	ASSY, CHAIN, HABA	170385	2





Item	Description	Part #	Qty
1	WASHER, 1/2 SAE FLAT	150924	24
2	NUT, 1/2 - 13 HEX	151282	4
3	WASHER, 1/2 SPLIT LOCK	153524	24
4	SCREW, HEX HD 1/2 - 13 X 2	153533	16
5	SCREW, 1/2 - 13 X 1 - 1/2 HEX FLANGE HEAD, RIGHT HAND	160819	8
6	SPROCKET SUPPORT WELDMENT	170043	1
7	TRACK SUPPORT WELDMENT	170044	1
8	SPACER	170061	2
9	SPACER	170062	4
10	SPROCKET, HABA	170068	4
11	SHAFT, TRACK	170071	1
12	SHAFT, TRACK	170072	1
13	FLANGED BEARING, 1 - 3/8"	170073	4
14	ROD, THREADED, 1/2 - 13 X 5.00	170105	2
15	TACK SUPPORT, TOP INNER	170107	1
16	TRACK SUPPORT, TOP CENTER	170108	1
17	TACK SUPPORT, TOP OUTER	170126	1
18	FHCS, 1/4 - 20 X 3/8"	170319	8
19	FHCS, 1/4 - 20 X 5/8"	170320	10

**ORDERING INFORMATION**

---

You may order MK Diamond products through your local MK Diamond distributor or, you may order direct from MK Diamond.

When ordering direct from MK Diamond, please have the following information ready before calling:

- The Model Number of the saw
- The Serial Number of the saw
- Where the saw was purchased and when
- The Part Number for the part(s) being ordered
- The Part Description for the part(s) being ordered

**NOTE:** There is a \$25.00 minimum order when ordering direct from MK Diamond. A \$5.00 charge will be added to orders having a net billing value under \$50.00. All purchases must be made using VISA, MasterCard or American Express.

All parts may be ordered by calling toll free to – 800 421-5830 or 310 539-5221 and asking for Customer Service. For technical questions, call – 800 474-5594.

**RETURN MATERIALS POLICY**

---

To expedite the service relative to the return of a product purchased through MK Diamond, please observe the following:

**NOTE:** When returning all items, they must have been purchased within the previous twelve (12) months.

- Have the Model Number of the saw
- Have the Serial Number of the saw
- Have the location of where the saw was purchased
- Have the date when the saw was purchased
- Contact Customer Service for approval to return the item(s)
- Obtain a Returned Goods Number (RGA) authorizing the return
- Follow the packaging instructions in the following section
- Ensure your item(s) are prepaid to the destination

For returned items, call toll free to – 800 421-5830 or 310 539-5221 and ask for Customer Service. For technical questions, call – 800 474-5594 or 310 257-2845.

**PACKAGING INSTRUCTIONS**

---

- Remove the Cutting Head and Support Angle Assembly
- Dry the saw before shipping
- When packing, include the following: Masonator & Diamond Blade (Other Accessories are not required)
- Package the unit in its original container or one of comparable size (do not ship the unit partially exposed)
- Ensure all parts are secured in the packaging to prevent moving

**AUTHORIZED SERVICE CENTERS**

---

For quicker repair time, you may contact MK Diamond Customer Service, toll free, at 800 421-5830 or 310 539-5221 for the Authorized Service Center closest to you or visit our web site at [www.mkdiamond.com](http://www.mkdiamond.com). For technical questions, call – 800 474-5594.

**CONTACT:**

Please contact MK Diamond Products, Inc. Customer Service Department with any questions you might have regarding distributors, parts or service.

Telephone: **(800) 421-5830**

Fax: **(310) 539-5158**

E-mail: **Customer\_Service@MKDiamond.com**

Customer Service Hours: **Monday through Friday, 6AM-4PM PST**

**MK Diamond Products, Inc.**

**1315 Storm Parkway**

**Torrance, CA 90501**

**MK DIAMOND PRODUCTS, INC. LIMITED WARRANTY**

MK DIAMOND PRODUCTS, INC. will guarantee every machine they build, to be free from defects in material and workmanship for (1) one year from date of purchase. The obligation of MK DIAMOND PRODUCTS, INC. under this warranty is limited to the repair or replacement of any parts which, under normal use, prove to be defective in material or workmanship. The parts involved or the unit in question should be returned to MK DIAMOND PRODUCTS, INC. or to a point designated by us, transportation prepaid.

This warranty does not obligate us to bear the cost of labor or transportation charges in connection with replacement or repair of defective parts. Likewise, it shall NOT apply to any unit which has been subjected to misuse, neglect or accident. This warranty does NOT apply to any machine which has been repaired or altered outside our factory.

This warranty does NOT obligate MK DIAMOND PRODUCTS, INC., with respect to items not of our manufacture, such as engines, motors, hydraulics, etc., which are subject to their own guarantees and warranties.

We shall in no event be liable for consequential damages or contingent liabilities arising out of failure of any equipment or parts to operate properly.

**© COPYRIGHT 2018, MK DIAMOND PRODUCTS, INC. ALL RIGHTS RESERVED.**

The MK Diamond logo is a registered trademark of MK Diamond Products, Inc. and may not be used, reproduced, or altered without written permission. All other trademarks are the property of their respective owners and used with permission.

MK Diamond may have patents, patent applications, trade marks, copyrights of other intellectual property right covering this product in this document.

This manual MUST accompany the equipment at all times. This manual is considered a permanent part of the equipment and should remain with the unit if resold.

The information and specifications included in this publication were in effect at the time of approval for printing.

**MK-MASONATOR**  
OWNER'S MANUAL, OPERATING INSTRUCTIONS, & PARTS LIST



**MK Diamond Products, Inc.**

MK Diamond Products, Inc.  
1315 Storm Parkway  
Torrance, CA 90501

Toll-Free: (800) 421-5830  
Phone: (310) 539-5221  
Fax: (310) 539-5158  
[www.mkdiamond.com](http://www.mkdiamond.com)