



MK Diamond Products, Inc.

www.mkdiamond.com

MK-5000 GAS BLOCK SAW PARTS MANUAL

MODELS

P/N

MK-5009G Block Saw Honda 9HP	158935
MK-5013G Block Saw Honda 13HP	158936



Revision 103	10.2020
Manual Part# 172583	

Caution: Read all safety and operating instructions before using this equipment. This owner's manual **MUST** accompany the equipment at all times.



MK Diamond Products, Inc.

INTRODUCTION

Congratulations on your purchase of a MK-5000. We are certain that you will be pleased with your purchase. MK Diamond takes pride in producing the finest construction power tools and diamond blades in the industry.

Operated correctly, your MK-5000 should provide you with years of service. In order to help you, we have included this manual. This owners manual contains information necessary to operate and maintain your MK-5000 safely and correctly. Please take the time to familiarize yourself with the MK-5000 by reading and reviewing this manual.

Read and follow all safety, operating and maintenance instructions.

If you should have questions concerning your MK-5000 please feel free to call our friendly customer service department at (800) 421-5830.

Regards,

MK Diamond

NOTE THIS INFORMATION FOR FUTURE USE:

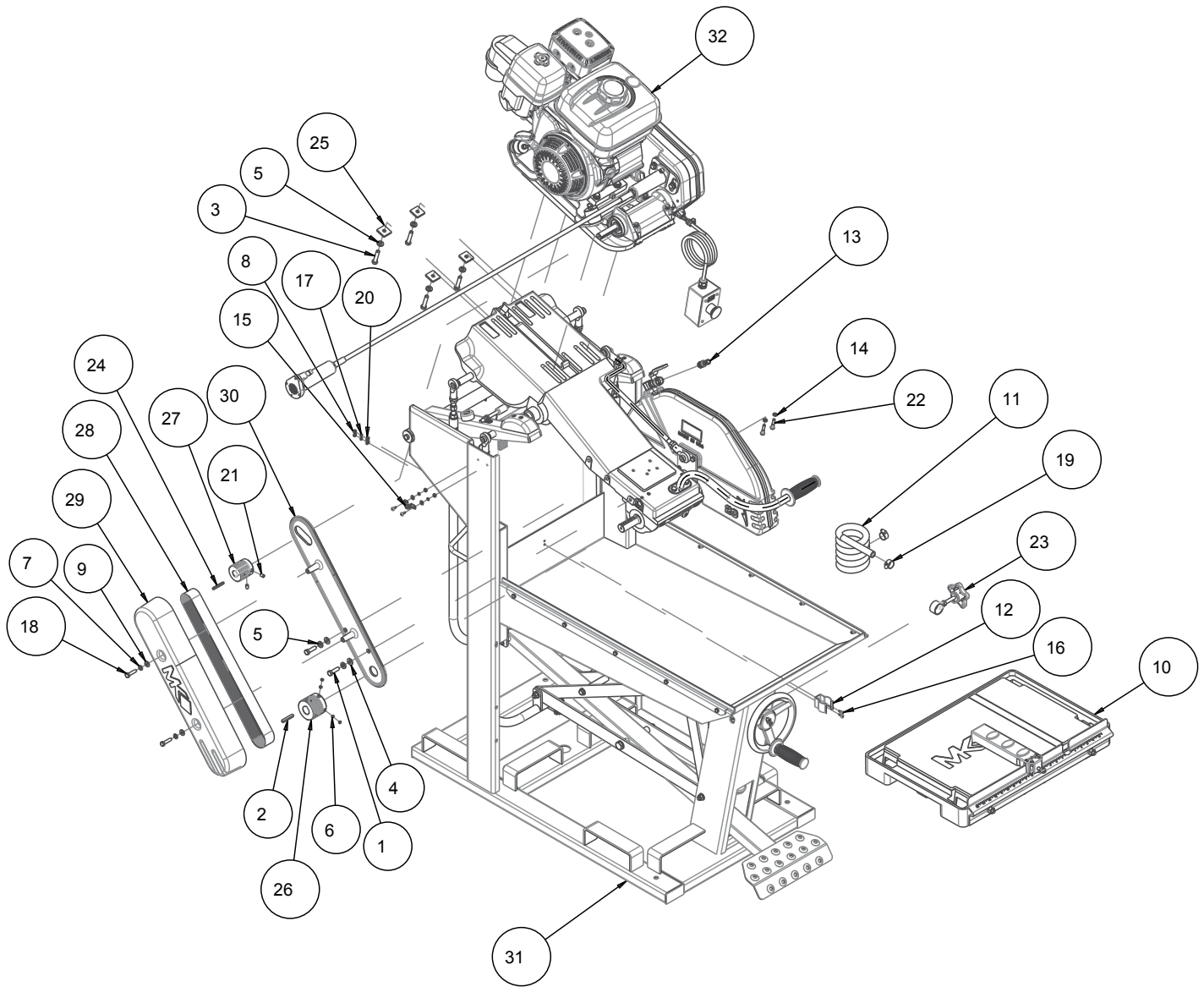
MODEL NUMBER:	
SERIAL NUMBER:	
PURCHASE PLACE:	
PURCHASE DATE:	

WARRANTY: For your (1) one year warranty to be effective, complete the online Product Registration as soon as possible. Visit www.mkdiamond.com/registration/

TABLE OF CONTENTS

FIGURE 1 - MK-5009G BLOCK SAW HONDA 9HP P/N 158935	4-5
FIGURE 2 - MK-5013G BLOCK SAW HONDA 13HP P/N 158936	6-7
FIGURE 3 - MK-5000 ASSY, BASE, HVY DTY PARENT P/N 172446	8-9
FIGURE 4 - MK-5000 BLOCK SAW ASSY, BASE, HVY DTY P/N 172446-14	10-11
FIGURE 5 - MK-5000 BLOCK SAW ASSY, BASE, HVY DTY P/N 172446-20	12-13
FIGURE 6 - MK-5000 BLOCK SAW ASSY, BASE, HVY DTY P/N 172446-24	14-15
FIGURE 7 - MK-5000 BLOCK SAW ASSY, FRAME ARM DETAIL P/N 154629	16
FIGURE 8 - MK-5000 BLOCK SAW ASSY, FRAME DEPTH CONTROL P/N 154629	17
FIGURE 9 - MK-5000 BLOCK SAW ASSY, FRAME FOOTPEDAL P/N 154629	18
FIGURE 10 - MK-5000 BLOCK SAW ASSY, FRAME LINKS P/N 154629	19
FIGURE 11 - MK-5000 BLOCK SAW ASSY, FRAME RAILS P/N 154629	20
FIGURE 12 - MK-5000 BLOCK SAW ASSY, CUTTING HEAD P/N 162546	21
FIGURE 13 - MK-5000 BLOCK SAW ASSY, HD ARBOR P/N 170951	22
FIGURE 14 - MK-5000 BLOCK SAW ASSY, BLADE GUARD 14" P/N 172449	23
FIGURE 15 - MK-5000 BLOCK SAW ASSY, BLADE GUARD 20" P/N 172450	24
FIGURE 16 - MK-5000 BLOCK SAW ASSY, BLADE GUARD 24" P/N 172451	25
FIGURE 17 - MK-5000 BLOCK SAW ASSY, ARM, REAR P/N 172537	26
FIGURE 18 - MK-5000 BLOCK SAW ASSY, ARM, FRONT P/N 172538	27
FIGURE 19 - MK-5000 BLOCK SAW ASSY, TABLE MK5000 P/N 152124	28
FIGURE 20 - MK-5000 ASSY, JACK SHAFT P/N 166045	29
FIGURE 21 - MK-5000 ASSY, ENGINE, HONDA, GX270 W/CYC 20/24" P/N 172545	30-31
FIGURE 22 - MK-5000 ASSY, ENGINE, HONDA, GX390 W/CYC 20/24" P/N 172547	32-33
FIGURE 23 - MK-5000 ASSY, SWITCH, GAS P/N 162537	34
FIGURE 24 - MK-5000 ASSY, PUMP, WATER, 5000 GAS P/N 152355	35
FIGURE 25 - MK-5000 ASSY, CENTRIFUGAL WATER PUMP, PUMP, P/N 160185	36
FIGURE 26 - MK-5000 ASSY, CENTRIFUGAL WATER PUMP, DRIVER, P/N 160186	37

FIGURE 1 - MK-5009G BLOCK SAW HONDA 9HP 20IN BLADE GUARD P/N 158935

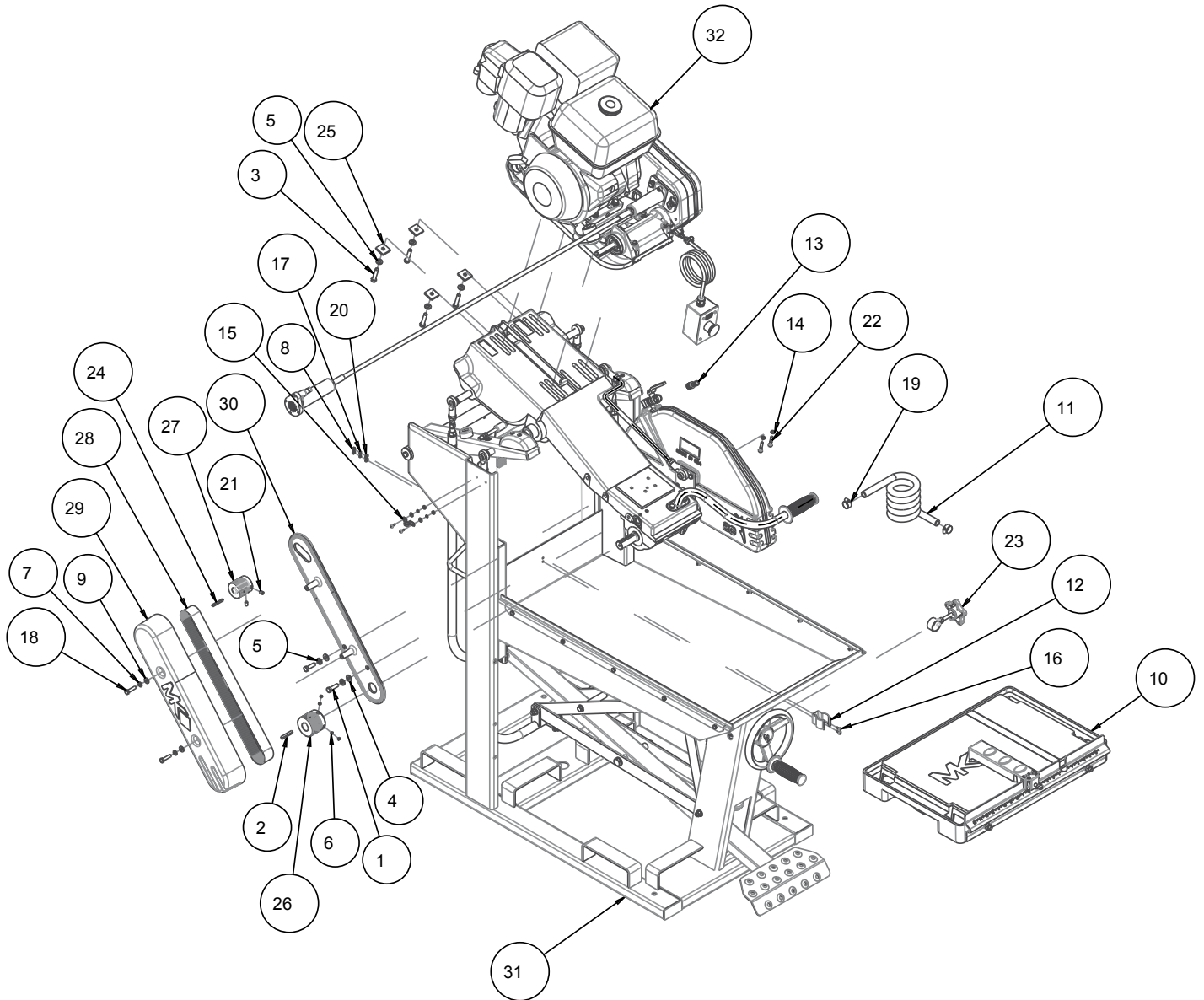


SUBSTITUTION TABLE		ITEM 13	ITEM 26	ITEM 27	ITEM 31
PART NO.	DESCRIPTION				
158935-14	MK-5009G BLK SAW HONDA 9PH 14" BG	152489	158470	160634	172446-20
158935-24	MK-5009G BLK SAW HONDA 9HP 24" BG	152704	161135	158959	172446-14
		152489	161135	160634	172446-24

FIGURE 1 - MK-5009G BLOCK SAW HONDA 9HP 20IN BLADE GUARD P/N 158935

ITEM	DESCRIPTION	PART #	QTY
1	SCREW, 3/8-16 X 1-1/4 HEX HEAD CAP	150774	2
2	KEY, 1/4 SQR X 1-3/4	150796	1
3	SCREW, HEX HD, 3/8-16 X 1-3/4	150920	4
4	WASHER, FLAT, SAE, 3/8	150923	2
5	WASHER, LOCK, SPLIT, 3/8	150925	6
6	SCREW, SET, CUP PT, 5/16-18X3/16	151167	4
7	WASHER, LOCK, SPLIT, 5/16	151747	2
8	NUT, HEX, 10-24	151749	4
9	WASHER, FLAT, SAE, 5/16	151754	2
10	ASSY, TABLE MK5000	152124	1
11	HOSE, VINYL, 1/2X3/4 (6.0')	152410	1
12	CLAMP, SPRING	152453	1
13	FITTING, 3/8 MNPT X 1/2 BARB	152489	1
14	WASHER, LOCK,SPLIT, 1/4	152591	2
15	CLAMP, CUSHION LOOP 3/8	152592	1
16	SCREW, PHILP SELF TAP 10-24 X 5/8"	153681	4
17	WASHER, #10 SPLIT LOCK	153684	4
18	SCREW, HEX HD, 5/16 - 18 X 1-1/4	153950	2
19	CLAMP, HOSE, 7/8	154173	2
20	WASHER, FLAT, SAE, #10	154369	4
21	SCREW, 5/16-18 X 3/8 SOCKET HEAD SET	157084	2
22	SCREW, HEX HD, 1/4 -20 X 1-1/4	157145	2
23	ASSY, FRICTION LOCK	157380	1
24	KEY, 3/16 X 3/16 X 1-3/4	157561	1
25	WASHER, SQR, 7/16 X 1-1/4 X 3/16	157567	4
26	PULLEY, 16J25 1.0 BORE	158470	1
27	PULLEY, 16J20 X .75 BORE	160364	1
28	BELT, 16J430	160367	1
29	BELT GUARD, OUTER, ARBOR, COMP	160888	1
30	CASTING, BT GRD ARBOR-INR-C	160890	1
31	ASSY, BASE, HVY DTY 20" BLD GRD	172446-20	1
32	ASSY, ENGINE, HONDA, GX270 W/CYC 20/24"	172545	1

FIGURE 2 - MK-5013G BLOCK SAW HONDA 13HP 20IN BLADE GUARD P/N 158936



<i>SUBSTITUTION TABLE</i>		ITEM 13	ITEM 26	ITEM 27	ITEM 31
PART NO.	DESCRIPTION				
158935-14	MK-5009G BLK SAW HONDA 9PH 14" BG	152489	158470	160634	172446-20
158935-24	MK-5009G BLK SAW HONDA 9HP 24" BG	152704	161135	158959	172446-14
		152489	161135	160634	172446-24

FIGURE 2 - MK-5013G BLOCK SAW HONDA 13HP 20IN BLADE GUARD P/N 158936

ITEM	DESCRIPTION	PART #	QTY
1	SCREW, 3/8-16 X 1-1/4 HEX HEAD CAP	150774	2
2	KEY, 1/4 SQR X 1-3/4	150796	1
3	SCREW, HEX HD, 3/8-16 X 1-3/4	150920	4
4	WASHER, FLAT, SAE, 3/8	150923	2
5	WASHER, LOCK, SPLIT, 3/8	150925	6
6	SCREW, SET, CUP PT, 5/16-18X3/16	151167	4
7	WASHER, LOCK, SPLIT, 5/16	151747	2
8	NUT, HEX, 10-24	151749	4
9	WASHER, FLAT, SAE, 5/16	151754	2
10	ASSY, TABLE MK5000	152124	1
11	HOSE, VINYL, 1/2X3/4 (6.0')	152410	1
12	CLAMP, SPRING	152453	1
13	FITTING, 3/8 MNPT X 1/2 BARB	152489	1
14	WASHER, LOCK,SPLIT, 1/4	152591	2
15	CLAMP, CUSHION LOOP 3/8	152592	1
16	SCREW, PHILP SELF TAP 10-24 X 5/8"	153681	4
17	WASHER, #10 SPLIT LOCK	153684	4
18	SCREW, HEX HD, 5/16 - 18 X 1-1/4	153950	2
19	CLAMP, HOSE, 7/8	154173	2
20	WASHER, FLAT, SAE, #10	154369	4
21	SCREW, 5/16-18 X 3/8 SOCKET HEAD SET	157084	2
22	SCREW, HEX HD, 1/4 -20 X 1-1/4	157145	2
23	ASSY, FRICTION LOCK	157380	1
24	KEY, 3/16 X 3/16 X 1-3/4	157561	1
25	WASHER, SQR, 7/16 X 1-1/4 X 3/16	157567	4
26	PULLEY, 16J25 1.0 BORE	158470	1
27	PULLEY, 16J20 X .75 BORE	160364	1
28	BELT, 16J430	160367	1
29	BELT GUARD, OUTER, ARBOR, COMP	160888	1
30	CASING, BT GRD ARBOR-INR-C	160890	1
31	ASSY, BASE, HVY DTY 20" BLD GRD	172446-20	1
32	ASSY, ENGINE, HONDA, GX390 W/CYC 20/24"	172547	1

FIGURE 3 - MK-5000 BLOCK SAW ASSY, BASE, HVY DTY PARENT P/N 172446

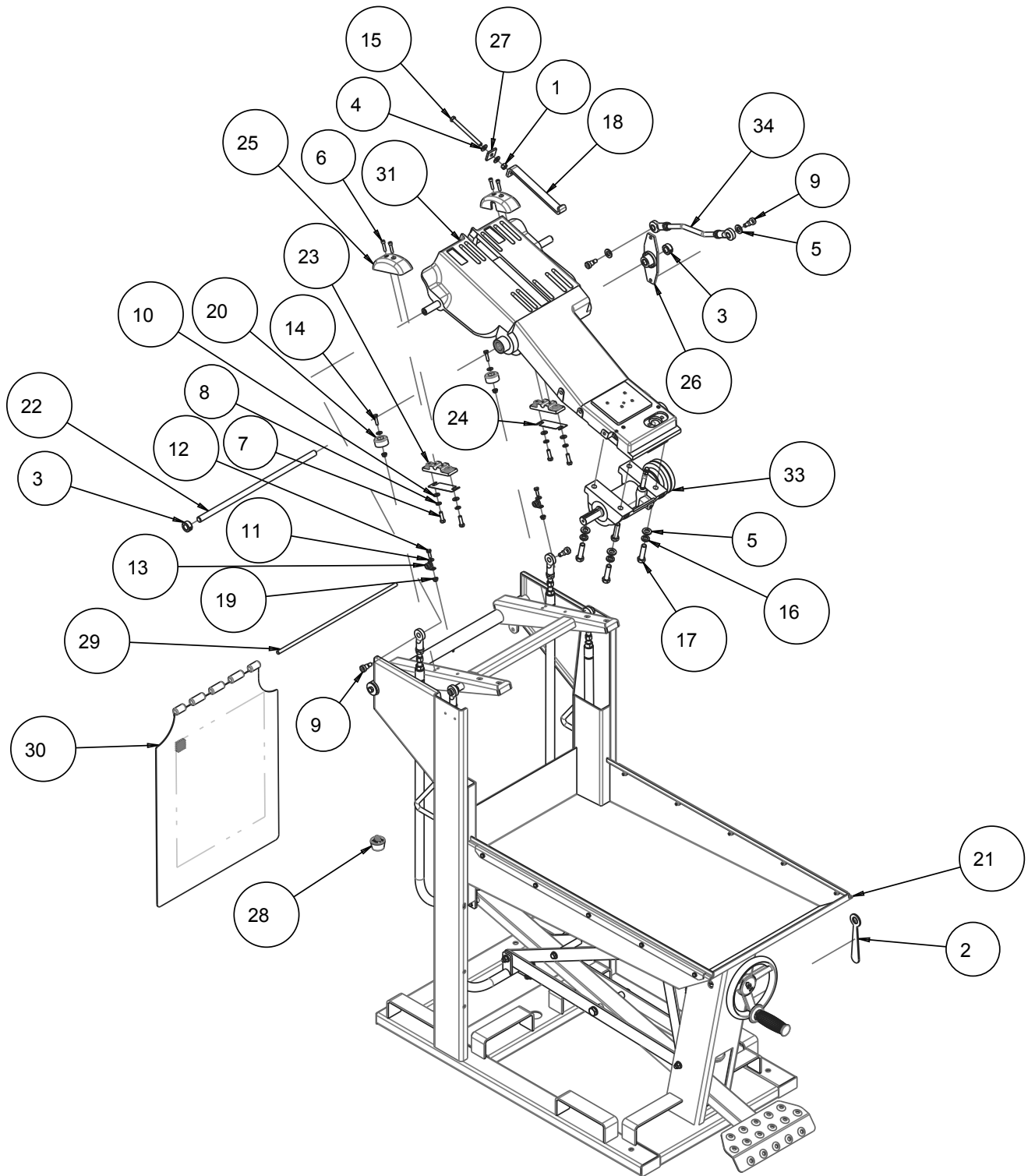


FIGURE 3 - MK-5000 BLOCK SAW ASSY, BASE, HVY DTY PARENT P/N 172446

ITEM	DESCRIPTION	PART #	QTY
1	NUT, HEX, 3/8-16	101188	1
2	WRENCH, 3/4 BOX END	134056	1
3	COLLAR, 1/13 ODX.625ID .5 WIDE	140012	2
4	WASHER, FLAT, SAE, 3/8	150923	2
5	WASHER, 1/2 SAE FLAT	150924	6
6	SCREW, SOC HD CAP, 1/4 - 20 X 1	151049	4
7	SCREW, HEX HD, 5/16-18X1	151743	4
8	WASHER, LOCK, SPLIT, 5/16	151747	4
9	SCREW, SHOULDER, 1/2 X 1/2	151753	4
10	WASHER, FLAT, SAE, 5/16	151754	4
11	WASHER, FLAT, SAE, 1/4	151915	4
12	SCREW, HEX HD, 1/4-20X3/4	152370	2
13	CLAMP, CUSHION LOOP 3/8	152592	2
14	SCREW, HEX HD, TAP, 1/4 -20 X 1	152676	2
15	SCREW, HEX HD, TAP, 3/8-16 X 4-1/2	153110	1
16	WASHER, 1/2 SPLIT LOCK	153524	4
17	SCREW, HEX HD 1/2-13X2	153533	1
18	STRAP, MOTOR ADJUSTMENT	153611	1
19	NUT, HEX, TW, 1/4-20	153941	4
20	BUMPER, 1/4 ID X 1-1/2OD X 3/4	154496	2
21	ASSY, FRAME	154629	1
22	SHAFT, PIVOT, CUTTING HEAD	154828	1
23	PILLOW BLOCK (COMP)	155762	2
24	SHIM, .025 PILLOW BLOCK	155905	2
25	BLOCK COVER (COMP)	156265	2
26	CRANK, BELL	157426	1
27	WASHER, SQR, 7/16 X 1-1/4 X 3/16	157567	1
28	DRAIN PLUG, W/RING	159529	1
29	ROD, SPLASH CURTAIN	160711	1
30	CURTAIN, SPLASH, MK-5000	160764	1
31	ASSY, CUTTING HEAD, STD	162546	1
32	OIL, 10-40 SAE MOTOR (1QT)	164970	1
33	ASSY, HD ARBOR	170951	1
34	ASSY, ARM, REAR	172537	1

FIGURE 4 - MK-5000 BLOCK SAW 14IN BLADE GUARD P/N 172446-14

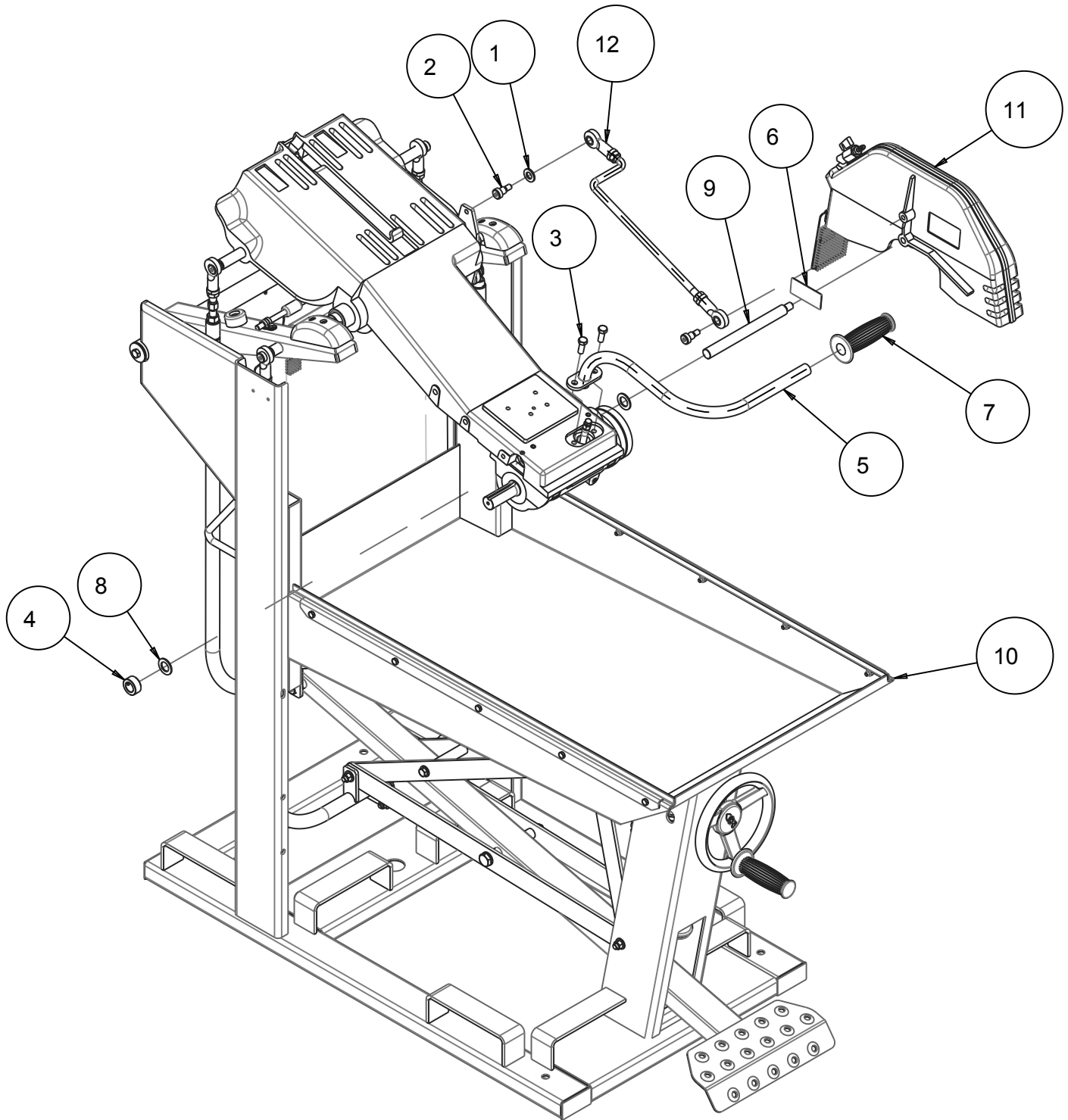


FIGURE 4 - MK-5000 BLOCK SAW 14IN BLADE GUARD P/N 172446-14

ITEM	DESCRIPTION	PART #	QTY
1	WASHER, 1/2 SAE FLAT	150924	1
2	SCREW, SHOULDER, 1/2 X 1/2	151753	2
3	SCREW, HEX HD CAP, 3/8 - 16 X 1	152507	2
4	COLLAR, SET, 3/4"	153814	1
5	HANDLE, CUTTING HEAD MK5000 20"	155851	1
6	TAG, SERIAL NUMBER, BLANK	157500-RW	1
7	GRIP, HANDLE 7/8 ID	158608	1
8	WASHER, FLAT, PLAS, .75 X 1.25 X .080	160827	2
9	SHAFT, PIVOT, 14" BLD GRD	164738	1
10	ASSY, BASE, STD DTY PARENT	172446	1
11	ASSY, BLD GRD, 14"	172449	1
12	ASSY, ARM, FRONT	172538	1

FIGURE 5 - MK-5000 BLOCK SAW 20IN BLADE GUARD P/N 172446-20

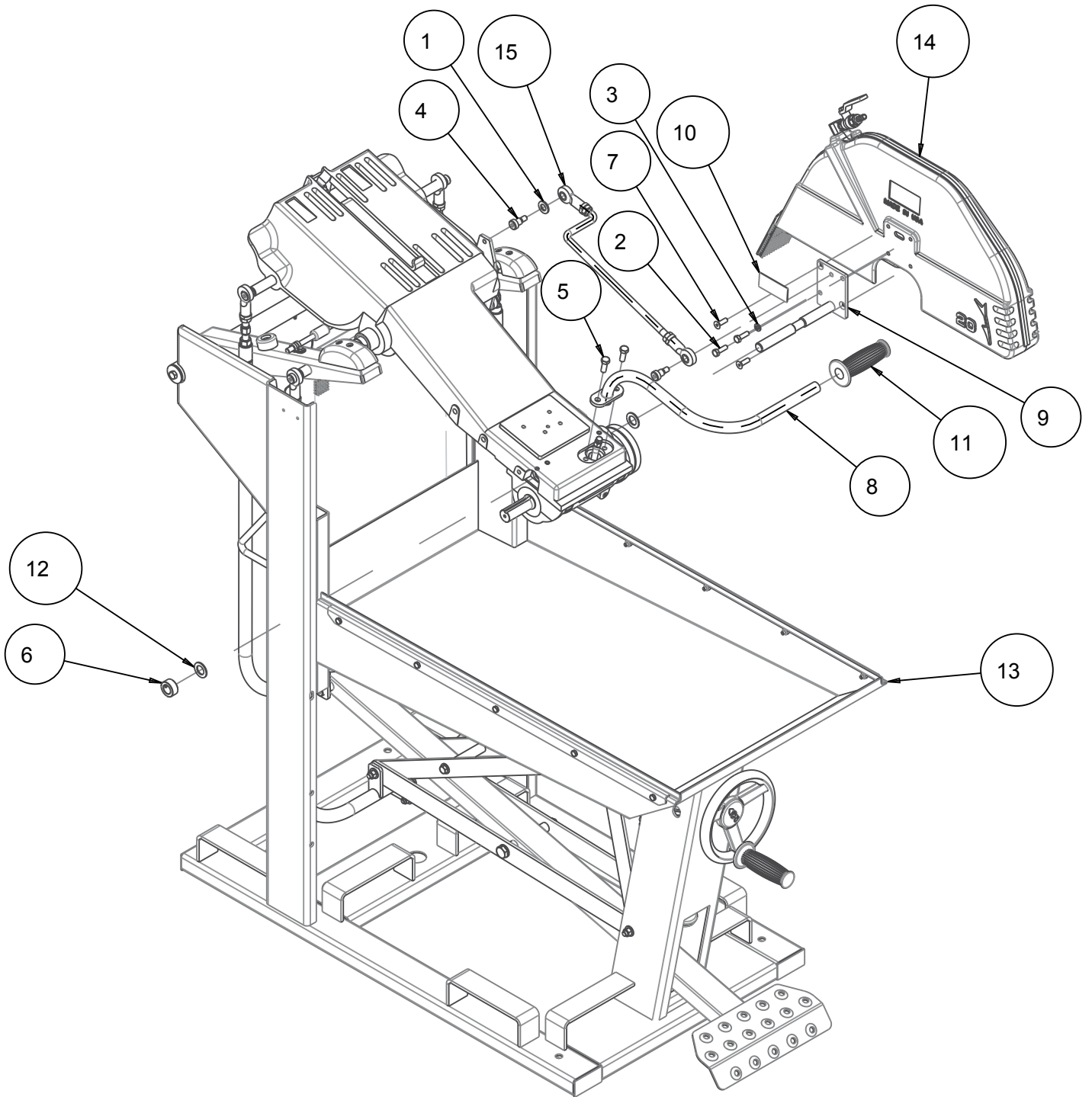


FIGURE 5 - MK-5000 BLOCK SAW 20IN BLADE GUARD P/N 172446-20

ITEM	DESCRIPTION	PART #	QTY
1	WASHER, 1/2 SAE FLAT	150924	1
2	SCREW, HEX HD, 5/16-18X1	151743	2
3	WASHER, LOCK, SPLIT, 5/16	151747	1
4	SCREW, SHOULDER, 1/2 X 1/2	151753	2
5	SCREW, HEX HD CAP, 3/8 -16 X 1	152507	2
6	COLLAR, SET, 3/4"	153814	1
7	SCREW, 5/16 - 18 X 1.0 FLAT HEAD SOCKET	155552	2
8	HANDLE, CUTTING HEAD MK5000 20"	155851	1
9	SHAFT, BLADE GUARD PIVOT	155886	1
10	TAG, SERIAL NUMBER, BLANK	157500-RW	1
11	GRIP, HANDLE 7/8 ID	158608	1
12	WASHER, FLAT, PLAS, .75 X 1.25 X .080	160827	2
13	ASSY, BASE, STD DTY PARENT	172446	1
14	ASSY, BLD GRD, 20"	172450	1
15	ASSY, ARM, FRONT	172538	1

FIGURE 6 - MK-5000 BLOCK SAW 24IN BLADE GUARD P/N 172446-24

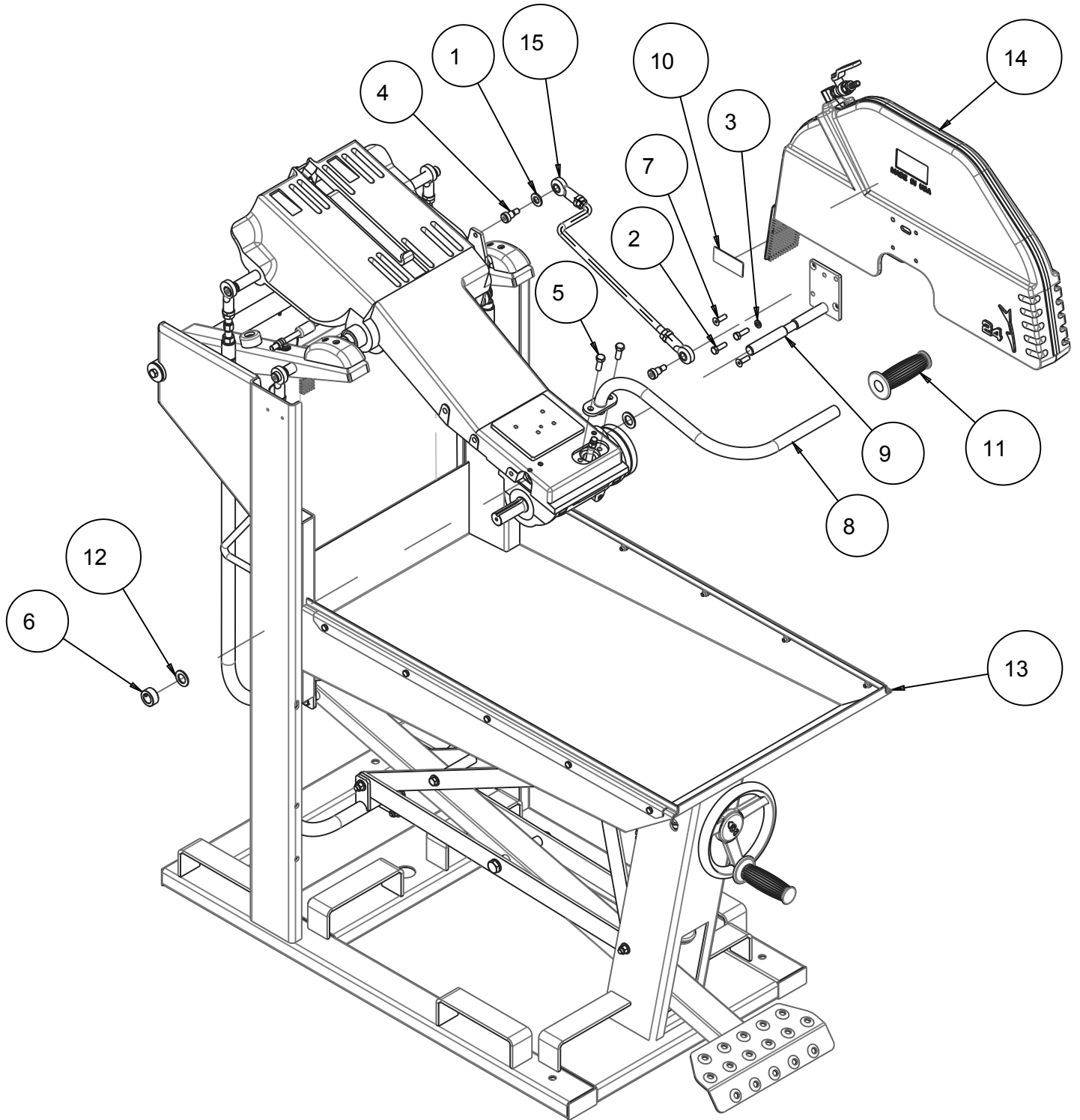
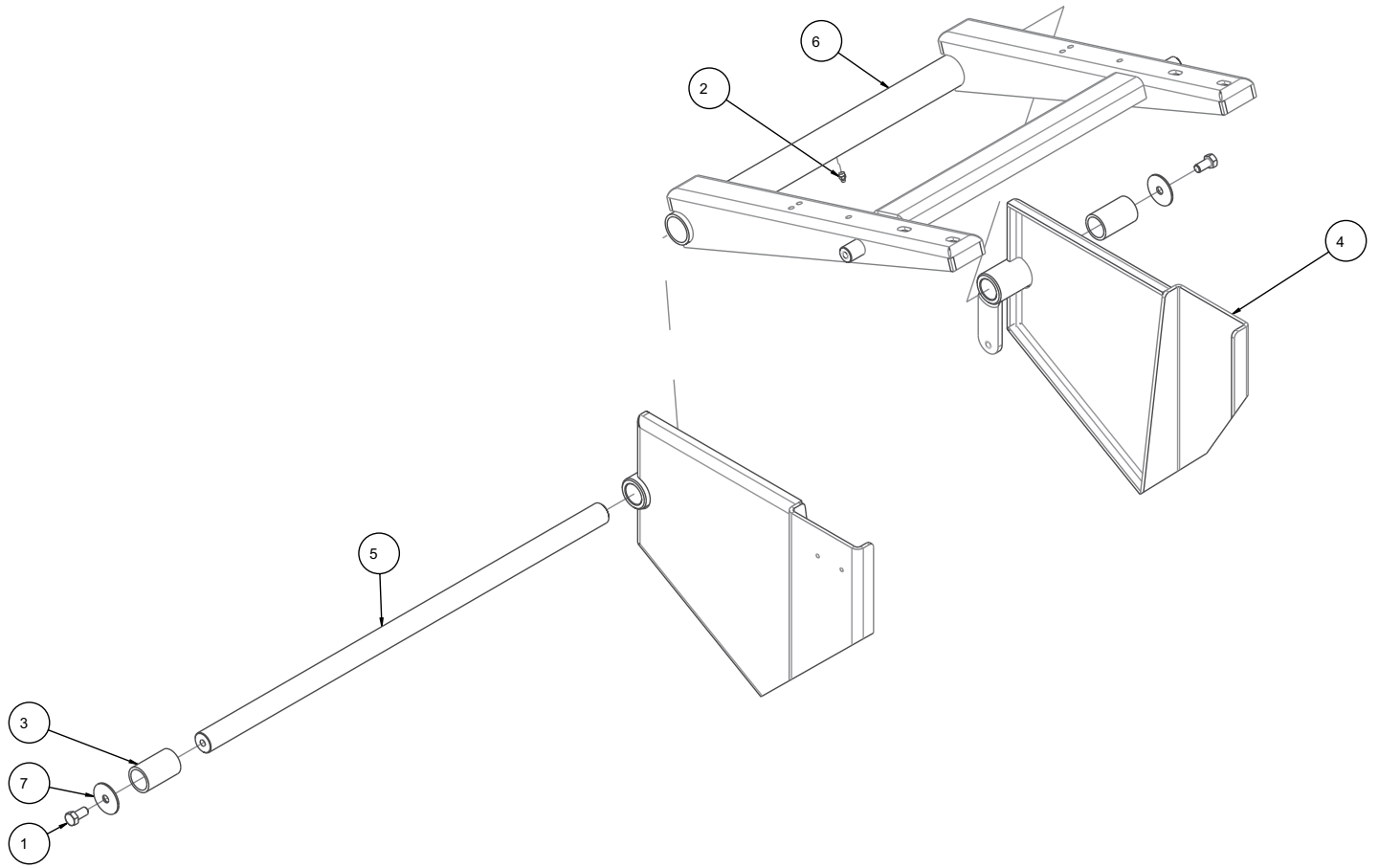


FIGURE 6 - MK-5000 BLOCK SAW 24IN BLADE GUARD P/N 172446-24

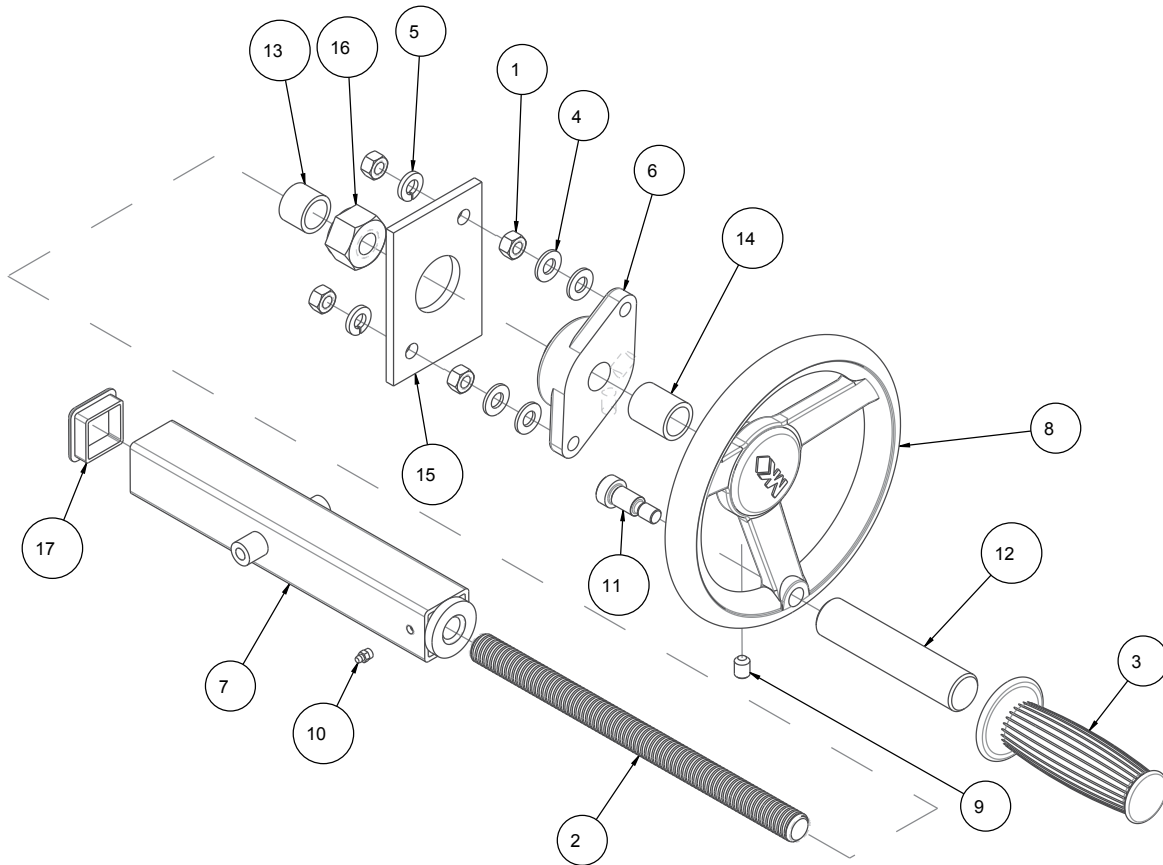
ITEM	DESCRIPTION	PART #	QTY
1	WASHER, 1/2 SAE FLAT	150924	1
2	SCREW, HEX HD, 5/16-18X1	151743	2
3	WASHER, LOCK, SPLIT, 5/16	151747	1
4	SCREW, SHOULDER, 1/2 X 1/2	151753	2
5	SCREW, HEX HD CAP, 3/8 -1 6 X 1	152507	2
6	COLLAR, SET, 3/4"	153814	1
7	SCREW, 5/16 - 18 X 1.0 FLAT HEAD SOCKET	155552	2
8	HANDLE, CUTTING HEAD MK5000 24"	155613	1
9	SHAFT, BLADE GUARD PIVOT	155886	1
10	TAG, SERIAL NUMBER, BLANK	157500-RW	1
11	GRIP, HANDLE 7/8 ID	158608	1
12	WASHER, FLAT, PLAS, .75 X 1.25 X .080	160827	2
13	ASSY, BASE, STD DTY PARENT	172446	1
14	ASSY, BLD GRD, 24"	172451	1
15	ASSY, ARM, FRONT	172538	1

FIGURE 7 - MK-5000 ASSY, BLOCK SAW ELEVATOR ARM P/N 154629



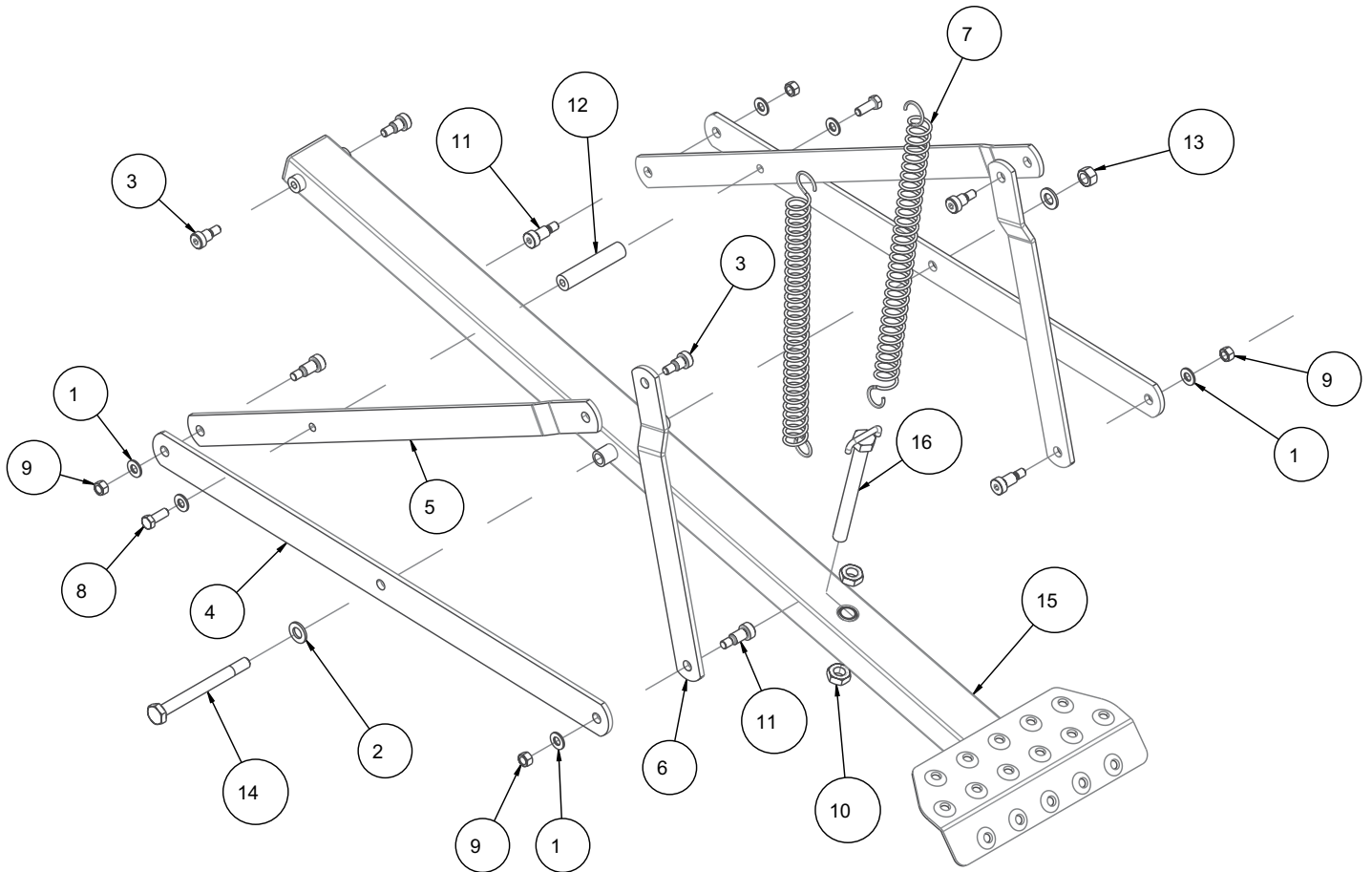
ITEM	DESCRIPTION	PART #	QTY
1	SCREW, HEX, 3/8 - 16 X 3/4	153527	2
2	FITTING, 1/4 - 28 GREASE	153852	1
3	BEARING, 1 X 1-1/4 X 2 MSI MK-5000	154571	2
4	WELDMENT, FRAME	155541	1
5	PIVOT SHAFT, ELEV. ARM	155880	1
6	WELDMENT, ELEVATION ARM MK5000	156285	1
7	WASHER, FENDER, 3/8 ID X 1-1/2 OD	158523	2

FIGURE 8 - MK-5000 ASSY, BLOCK SAW DEPTH CONTROL P/N 154629



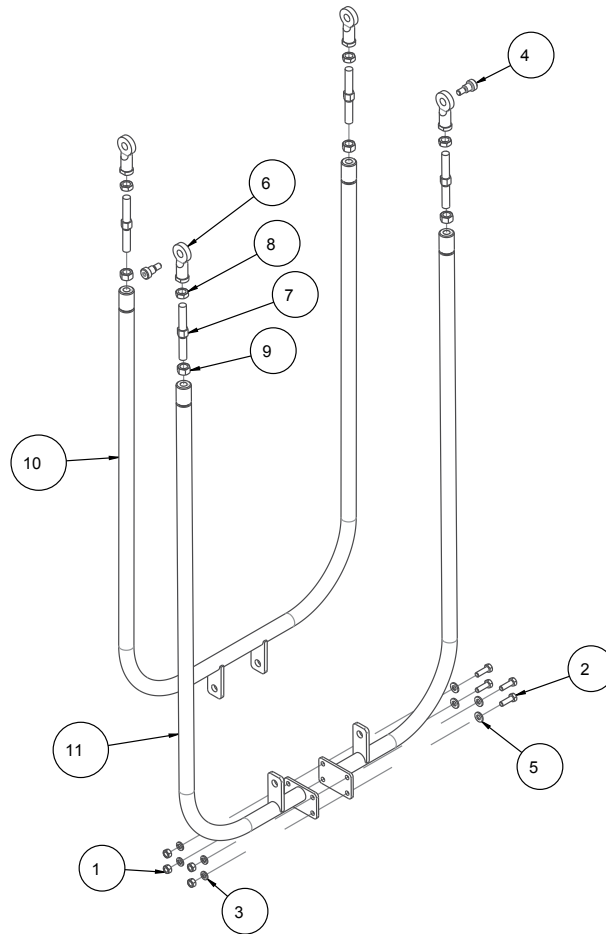
ITEM	DESCRIPTION	PART #	QTY
1	NUT, HEX, 3/8 - 16	101188	4
2	SCREW, 3/4-6 DEPTH CONTROL	150840	1
3	GRIP, HANDLE, 1.0 ID	150842	1
4	WASHER, FLAT, SAE, 3/8	150923	4
5	WASHER, LOCK, SPLIT, 3/8	150925	2
6	BEARING, 3/4 ID FLANGE (COMP)	152025	1
7	ADJ SHAFT TUBE	152116	1
8	CRANK WHEEL, 3/4-6-PLASTIC COMP	153646	1
9	SCREW, SET, SOC, CUPT, 3/8-16 X 1/2	153710	1
10	FITTING, 1/4-28 GREASE	153852	1
11	SCREW, SHLDR, SOC HD, 1/2 X 3/4	156177	1
12	HANDLE, CRANK WHEEL	156236	1
13	SPACER, ADJ. SHAFT	156249	1
14	SPACER, DEPTH FEED WHEEL	156250	1
15	SUPPORT PLATE, BEARING	156278	1
16	NUT, ACME, STANDARD 3/4-6	158227	1
17	PLUG, SQUARE, 1- 1/2-10-14	161165	1

FIGURE 9 - MK-5000 ASSY, BLOCK SAW FOOTPEDAL P/N 154629



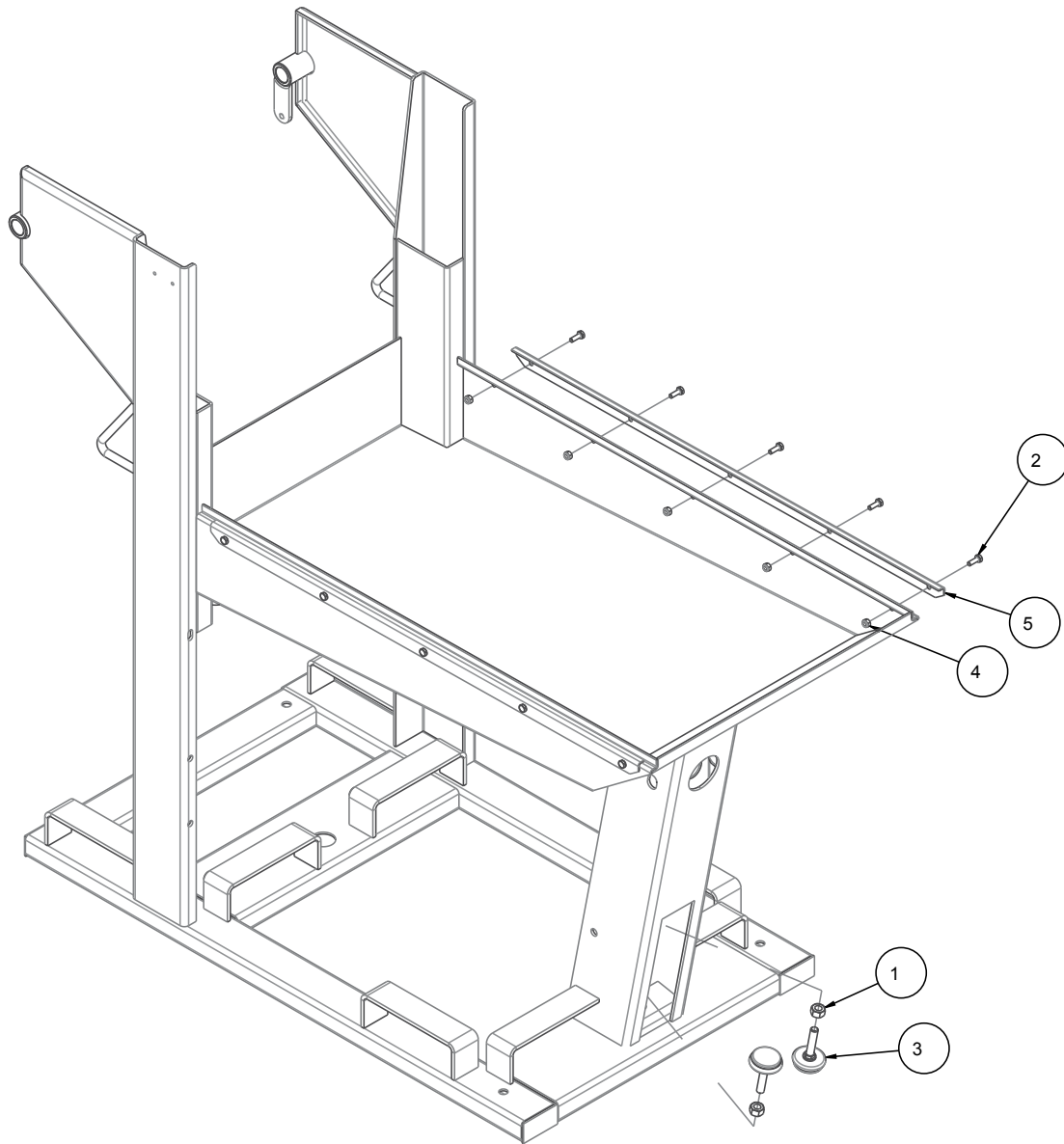
ITEM	DESCRIPTION	PART #	QTY
1	WASHER, FLAT, SAE, 3/8	150923	6
2	WASHER, 1/2 SAE FLAT	150924	2
3	SCREW, SHOULDER, 1/2 X 1/2	151753	4
4	LINKAGE, PEDAL HORIZONTAL	152112	2
5	LINKAGE, PEDAL DIAGONAL	152113	2
6	LINKAGE, PEDAL VERTICAL	152114	2
7	SPRING, FOOT PEDAL MK5000	152115	2
8	SCREW, HEX HD CAP, 3/8-16 X 1	152507	2
9	NUT, 3/816 HEX CENTERLOCK	153522	4
10	NUT, HEX AM 5/8-11 UNC	155603	2
11	SCREW, SHLDR, SOC HD, 1/2 X 3/4	156177	4
12	PEDAL, SHAFT TIE	156259	1
13	NUT, 1/2-13 CENTERLOCK HEX	156279	1
14	SCREW, HEX HD CAP 1/2-13 X 5-1/2	158526	1
15	PEDAL, FOOT & BAR	160139	1
16	HOOK BOLT, WELDMENT, ASSY	160141	1

FIGURE 10 - MK-5000 ASSY, BLOCK SAW LINKS P/N 154629



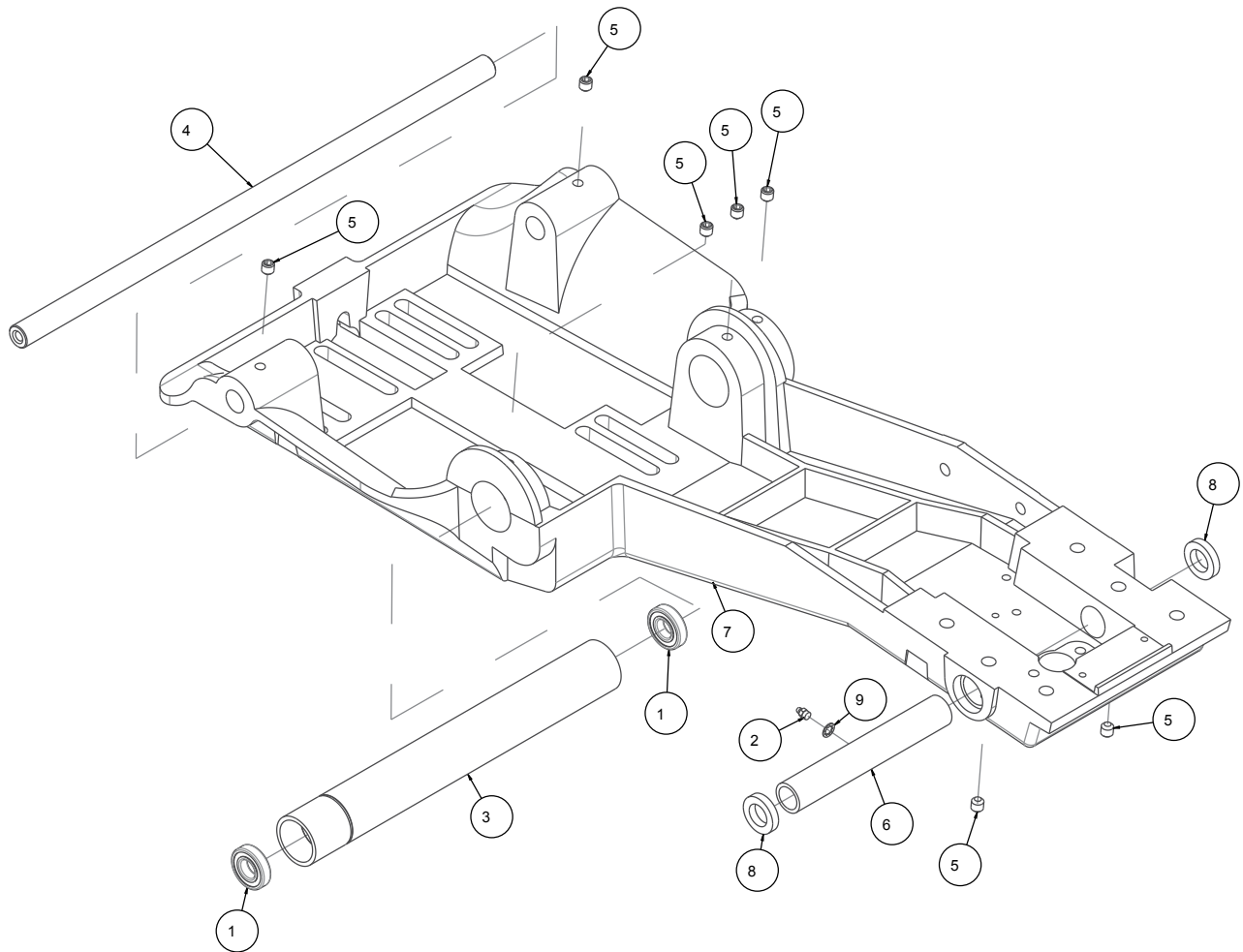
ITEM	DESCRIPTION	PART #	QTY
1	NUT, HEX, 5/16-18	101196	4
2	SCREW, HEX HD, 5/16-18X1	151743	4
3	WASHER, LOCK, SPLIT, 5/16	151747	4
4	SCREW, SHOULDER, 1/2 X 1/2	151753	2
5	WASHER, FLAT, SAE, 5/16	151754	4
6	JOINT, SPHERICAL FEM. 1/2-20RH	154387	4
7	SCREW, ADJUSTMENT	154433	4
8	NUT, JAM, 1/2-20	154460	4
9	JAM NUT 1/2-20 (LH)	154461	4
10	LINK, REAR CONNECTING	156252	1
11	LINK, FRONT CONNECTING	156253	2

FIGURE 11 - MK-5000 ASSY, BLOCK SAW FRAME RAILS P/N 154629



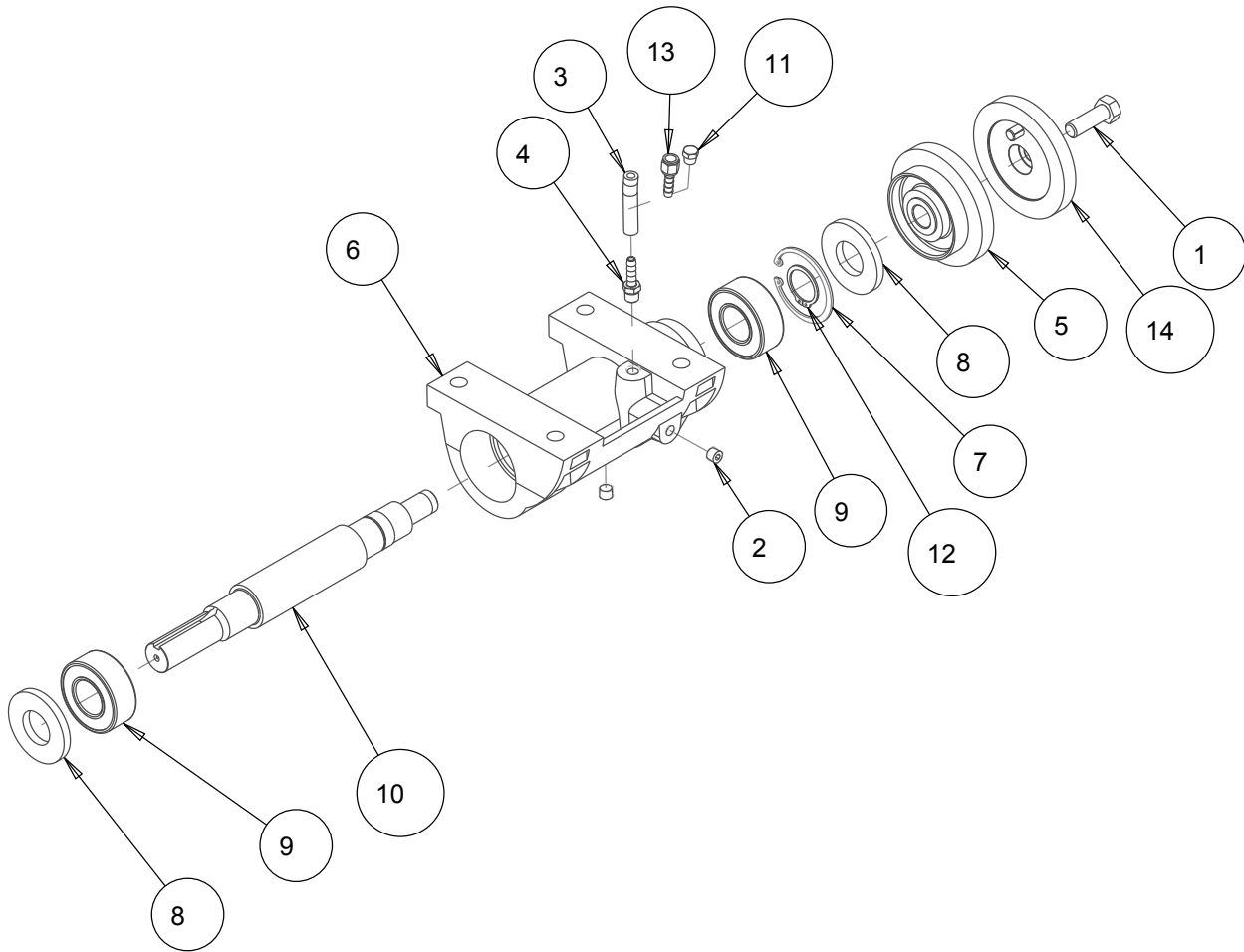
ITEM	DESCRIPTION	PART #	QTY
1	NUT, HEX, 1/2-13	151282	2
2	SCREW, HEX HD, 1/4-20 X 3/4	152370	10
3	BUMPER, 1-1/2 DIA. X 1/2 -13 X 3 STUD	158605	2
4	NUT, HEX, NYLK, 1/4 -20	159857	10
5	LINER, RAIL	166934	2

FIGURE 12 - ASSY, CUTTING HEAD P/N 162546



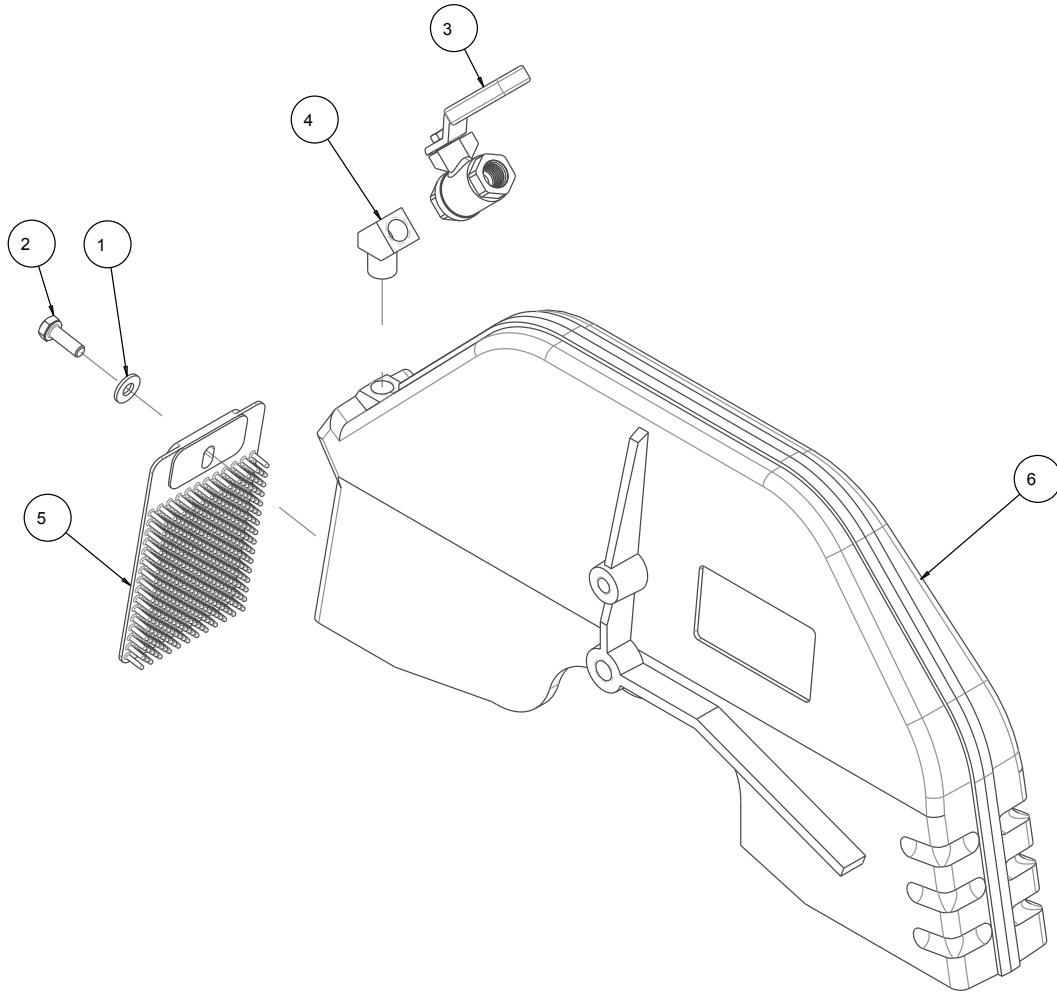
ITEM	DESCRIPTION	PART #	QTY
1	BEARING, CUTTING HD PIV	140004	2
2	FITTING, 1/4-28 GREASE	153852	1
3	HOUSING, PIVOT SHAFT	154827	1
4	SHAFT, DEPTH ADJUST	154932	1
5	SCREW, 3/8 -16 X 3/8 SOCKET HEAD SET, CUP POINT	160713	7
6	HOUSING, SHAFT, CUTTING HEAD	160830	1
7	CASING, CUT, HD, HVY DTY, COMP	160885	1
8	SEAL, 3/4 X 1-1/4 X 1/4	162489	2
9	WASHER, LOCK, IT, 1/4	162490	1

FIGURE 13 - MK-5000 ASSY, HD ARBOR P/N 170951



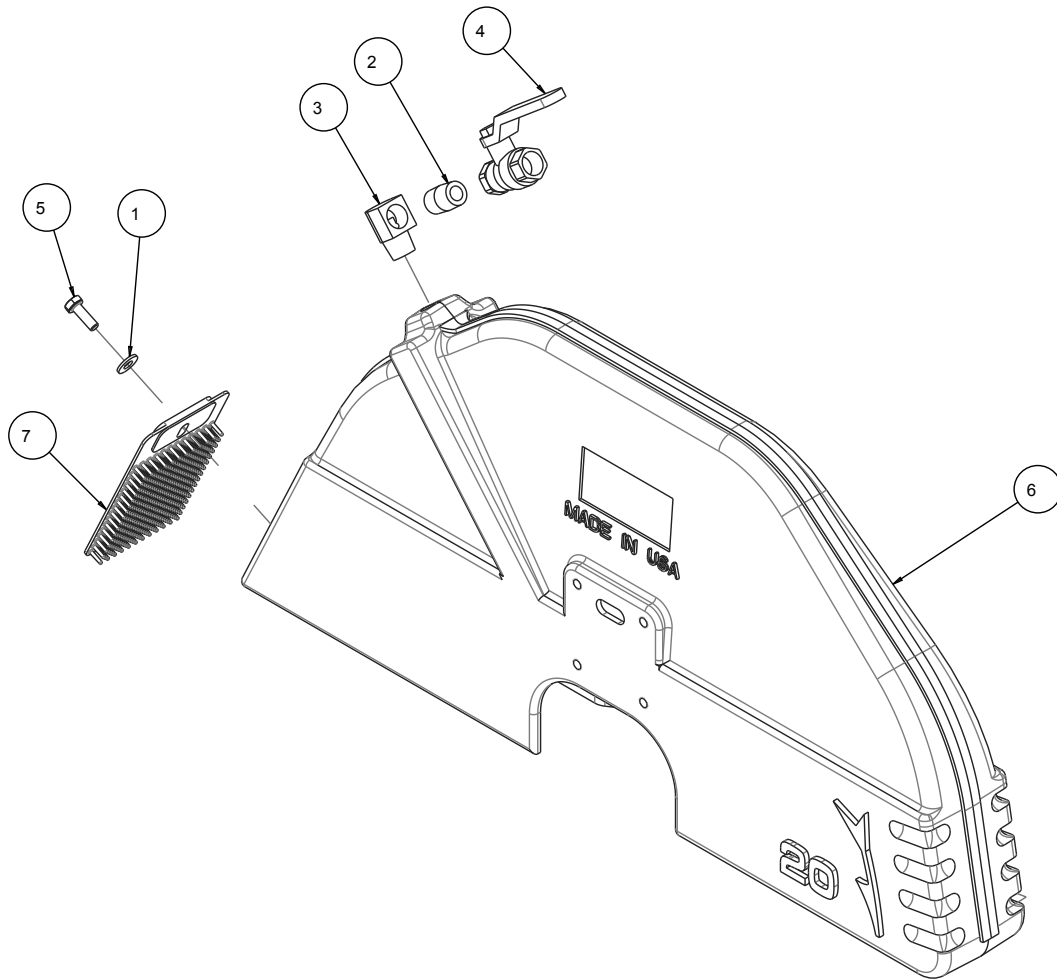
ITEM	DESCRIPTION	PART #	QTY
1	SCREW, HEX HD 1/2-20X1-1/4	152122	1
2	PLUG, 1/8NPT HEX SOCKET	152472	2
3	HOSE, 1/4 FUEL, 6"	154163	1
4	FITTING, 1/8 MNPT X 1/4 BARB	155809	1
5	FLANGE, INNER, MASONRY, 4"	161305	1
6	CASTING, SHAFT HOUSING - COMP	170944	1
7	RING, RET, INT, 65MM	170945	1
8	SEAL, OIL, 30MM X 62MM X 7MM	170946	2
9	BEARING, 30X62X23.8, D-ROW BALL	170947	2
10	SHAFT, HD ARBOR	170948	1
11	BREATHER, 1/8 FNPT	170949	1
12	RING, RET, EXT, 30MM	170950	1
13	FITTING, 1/8 FNPT X 1/4 BARB	171019	1
14	ASSY, FLANGE, OUTER, 4: MASONRY	171252	1

FIGURE 14 - MK-5000 ASSY, BLADE GUARD 14" P/N 172449



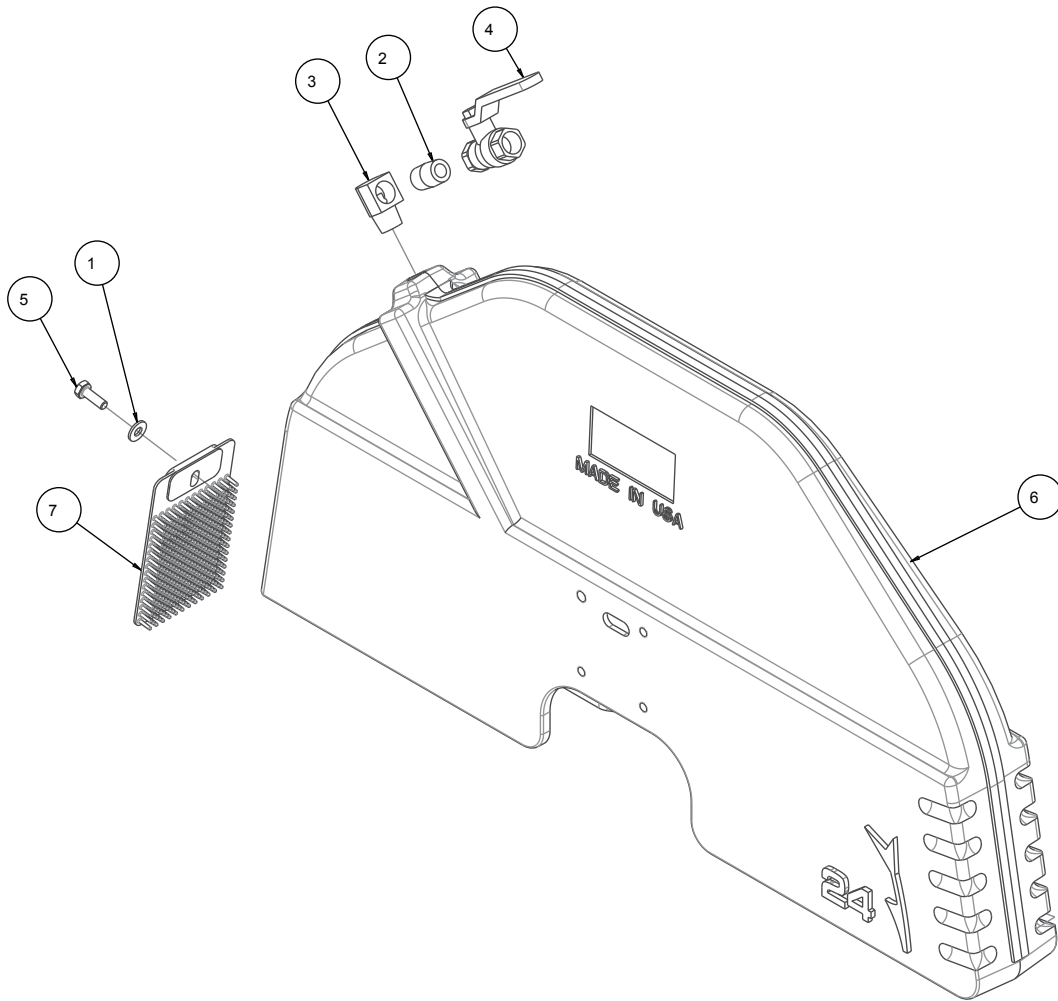
ITEM	DESCRIPTION	PART #	QTY
1	WASHER, FLAT, SAE, 1/4	151915	1
2	SCREW, HEX HD, 1/4-20 X 3/4	152370	1
3	VALVE, FEMALE BALL 1/4" PIPE	152597	1
4	ELBOW, 1/4 NPT X 45 STREET	153869	1
5	GUARD, SPLASH	160310	1
6	CASTING, 5000, BLD GRD, 14"-COMP	164735	1

FIGURE 15 - MK-5000 ASSY, BLADE GUARD 20" P/N 172450



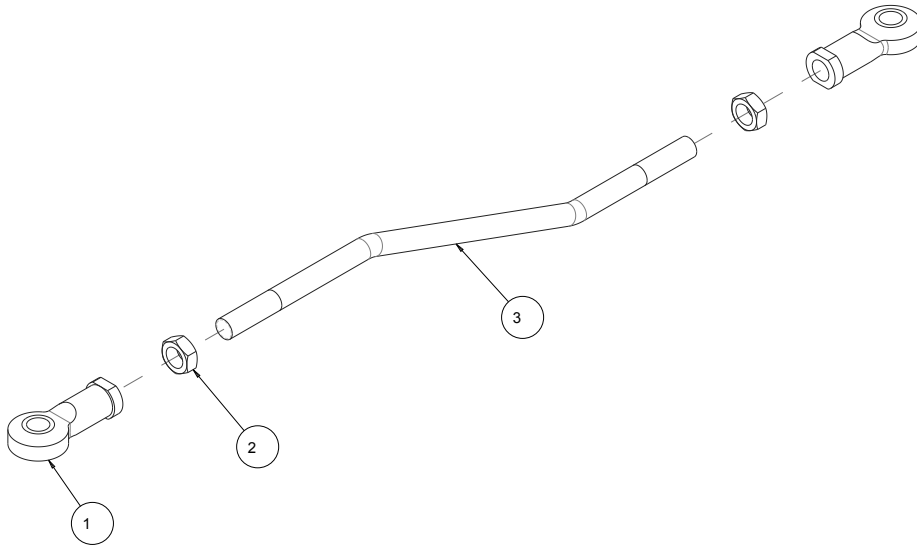
ITEM	DESCRIPTION	PART #	QTY
1	WASHER, FLAT, SAE, 1/4	151915	1
2	NIPPLE, 3/8 MNPT X CLOSE	152073	1
3	ELBOW, STREET, 3/8 NPT X 90, BRASS	152074	1
4	VALVE, BALL 3/8"	152075	1
5	SCREW, HEX HD, 1/4-20X3/4	152370	1
6	CASTING, BLD GRD 20" COMP	159674	1
7	GUARD, SPLASH	160310	1

FIGURE 16 - MK-5000 ASSY, BLADE GUARD 24" P/N 172451



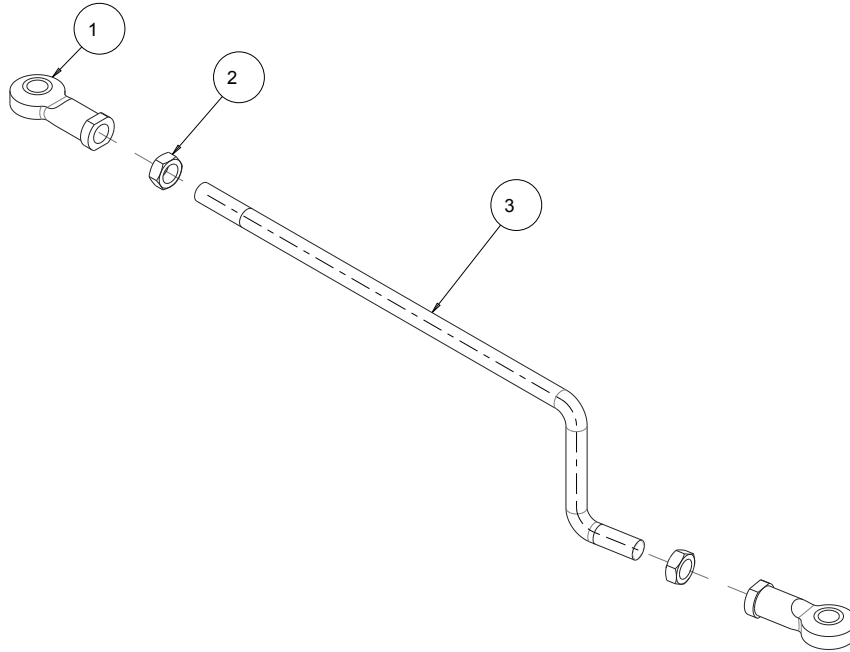
ITEM	DESCRIPTION	PART #	QTY
1	WASHER, FLAT, SAE, 1/4	151915	1
2	NIPPLE, 3/8 MNPT X CLOSE	152073	1
3	ELBOW, STREET, 3/8 NPT X 90, BRASS	152074	1
4	VALVE, BALL 3/8"	152075	1
5	SCREW, HEX HD, 1/4-20X3/4	152370	1
6	CASTING, BLD GRD 24" COMP	159324	1
7	GUARD, SPLASH	160310	1

FIGURE 17 - MK-5000 ASSY, ARM, REAR P/N 172537



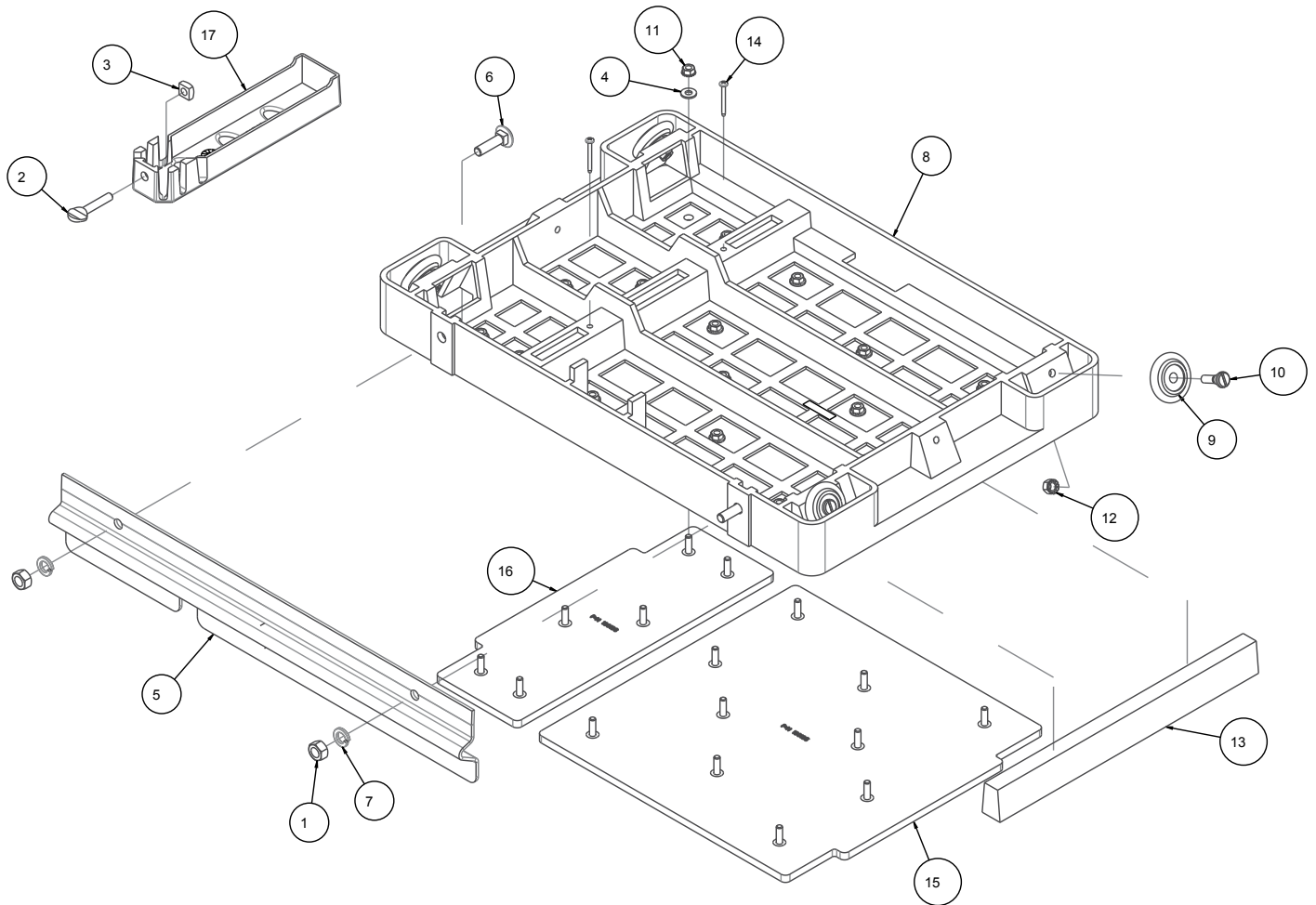
ITEM	DESCRIPTION	PART #	QTY
1	JOINT, SPHERICAL FEM. 1/2-20RH	154387	2
2	NUT, JAM, 1/2-20	154460	2
3	ARM, REAR CONNECTING	158563	1

FIGURE 18 - MK-5000 ASSY, ARM, FRONT P/N 172538



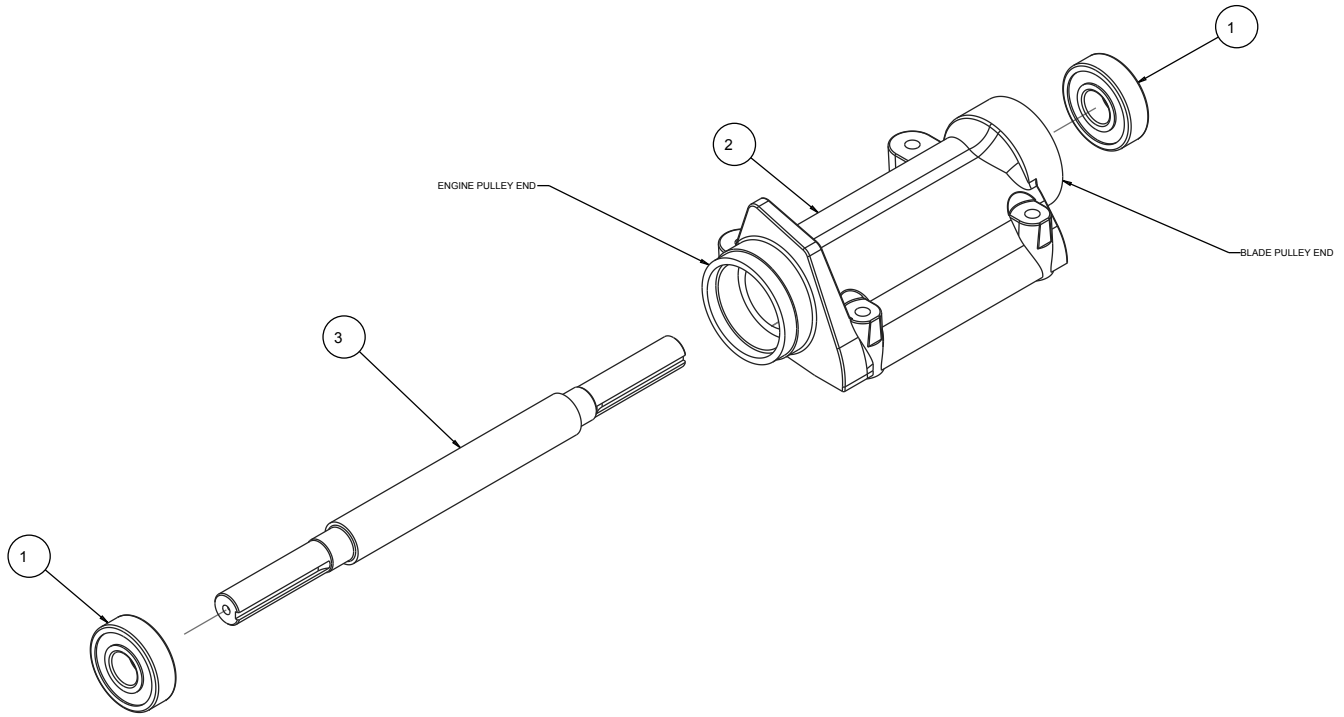
ITEM	DESCRIPTION	PART #	QTY
1	JOINT, SPHERICAL FEM. 1/2-20RH	154387	2
2	NUT, JAM, 1/2-20	154460	2
3	LINK ROD, BLADE GUARD	158564	1

FIGURE 19 - MK-5000 ASSY, TABLE P/N 152124



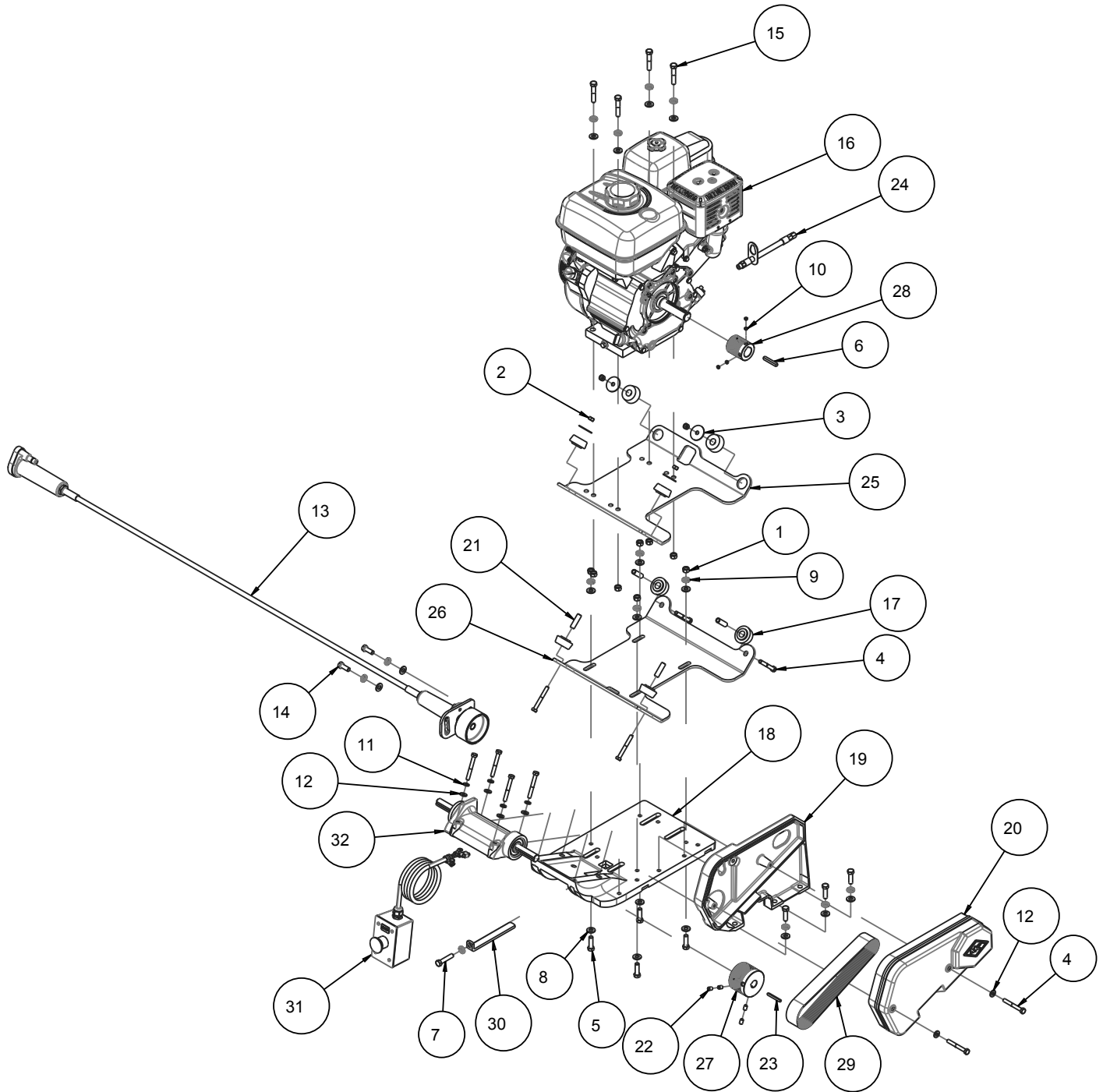
ITEM	DESCRIPTION	PART #	QTY
1	NUT, HEX 7/16-14	150922	2
2	SCREW, THUMB 5/16-18X1-1/2	151155	1
3	NUT, SQUARE 5/16-18	151156	1
4	WASHER, FLAT, SAE, 1/4	151915	16
5	RULE, FRONT, STOP	152126	1
6	BOLT, CARR. 7/16 - 14 X 1-1/4	152423	2
7	WASHER, LOCK, SPLIT 7/16	152424	2
8	CASTING, 5000, TABLE INSERT	152455	1
9	WHEEL, ROLLER MK5000, MK1080	152493	4
10	STUD, ROLLER WHEEL	152494	4
11	NUT, HEX, TW, 1/4-20	153941	16
12	NUT, HEX, TW, 5/16-18	153942	4
13	WOOD STRIP, TABLE INSERT	157748	1
14	SCREW, #8 X 1-1/2 FLAT HD PHIL	158157	2
15	MAT, MK-5000 TABLE-LG	160165	1
16	MAT, MK-5000 TABLE-SM	160166	1
17	CASTING, SQUARING ARM-COMP	231276	1

FIGURE 20 - MK-5000 ASSY, JACK SHAFT P/N 166045



ITEM	DESCRIPTION	PART #	QTY
1	BEARING, ARBOR HOUSING	154594	2
2	CASTING, 2000/5000 ARBOR - COMP	154637	1
3	SHAFT, JACK	156117	1

FIGURE 21 - MK-5000 ASSY, ENGINE, HONDA, GX270 W/CYC 20/24" P/N 172545

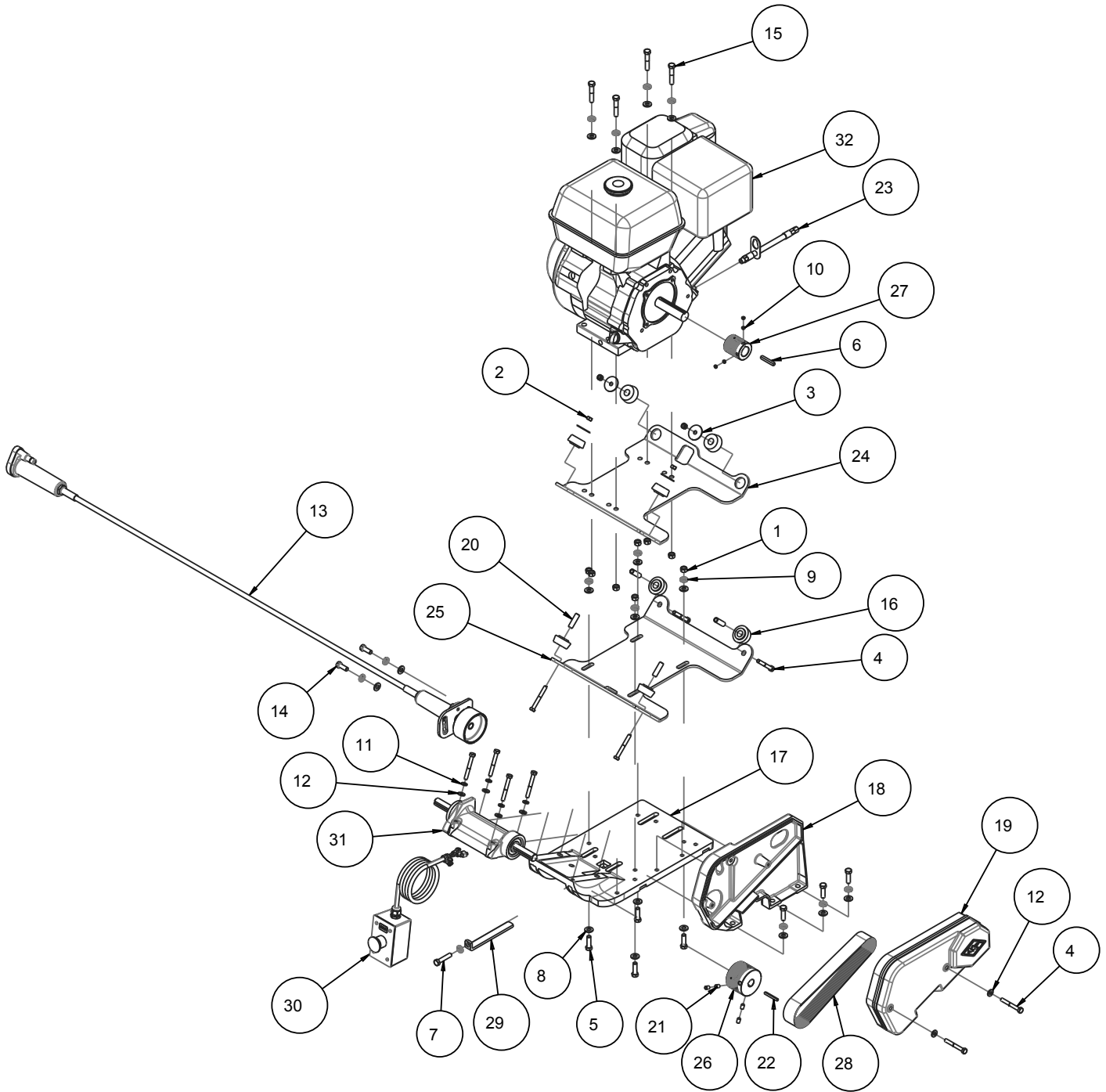


BOM SUBSTITUTION TABLE		MOTOR PULLEY
PART NO.	DESCRIPTION	
172545-14	ASSY, ENGINE, HONDA GX270 W/CYC, 14"	158470

FIGURE 21 - MK-5000 ASSY, ENGINE, HONDA, GX270 W/CYC 20/24" P/N 172545

ITEM	DESCRIPTION	PART #	QTY
1	NUT, HEX 3/8-16	101188	8
2	NUT, HEX, 5/16-18	101196	4
3	WASHER, FENDER, 5/16X1-1/2	101527	4
4	SCREW, HEX HD 5/16-18X2-1/2	101675	10
5	SCREW, 3/8-16 X 1-1/4 HEX HEAD CAP	150774	7
6	KEY, 1/4 SQR X 1-3/4	150796	1
7	SCREW, HEX HD, 3/8-16 X 1-3/4	150920	1
8	WASHER, FLAT, SAE, 3/8	150923	17
9	WASHER, LOCK, SPLIT, 3/8	150925	14
10	SCREW, SET, CUP PT, 5/16-18X3/16	151167	4
11	WASHER, LOCK, SPLIT, 5/16	151747	4
12	WASHER, FLAT SAE, 5/16	151754	6
13	ASSY, PUMP, WATER, 5000 GAS	152355	1
14	SCREW, HEX HD CAP, 3/8-16 X 1	152507	2
15	SCREW, HEX HD, CAP, 3/8-16X2	153485	4
16	ENGINE, HONDA GX270	155396	1
17	MOUNT, SHOCK MK-5000	156105	8
18	CASTING, HONDA ENGINE MT-COMP	156140	1
19	GUARD, BELT, INNER, ENGINE-COMP	156148	1
20	GUARD, BELT, OUTER, ENGINE-COMP	156149	1
21	STAND OFF, SHOCK MOUNT	156560	4
22	SCREW, 5/16-18 X 3/8 SOCKET HEAD SET	157084	4
23	KEY, 3/16 X 3/16 X 1-3/4	157561	1
24	HOSE, OIL DRAIN, M12	157577-02	1
25	MOUNT, ENGINE UPPER, MK-5000	158737	1
26	MOUNT, ENGINE LOWER	158738	1
27	PULLEY, 16J28 X .75 BORE	160362	1
28	PULLEY, 16J18 X 1.0 BORE	160365	1
29	BELT, 16J270	160366	1
30	BELT, TENSIONER	160432	1
31	ASSEMBLY, SWITCH, GAS	162537	1
32	ASSY, JACK SHAFT	166045	1

FIGURE 22 - MK-5000 ASSY, ENGINE, HONDA, GX390 W/CYC 20/24" P/N 172547

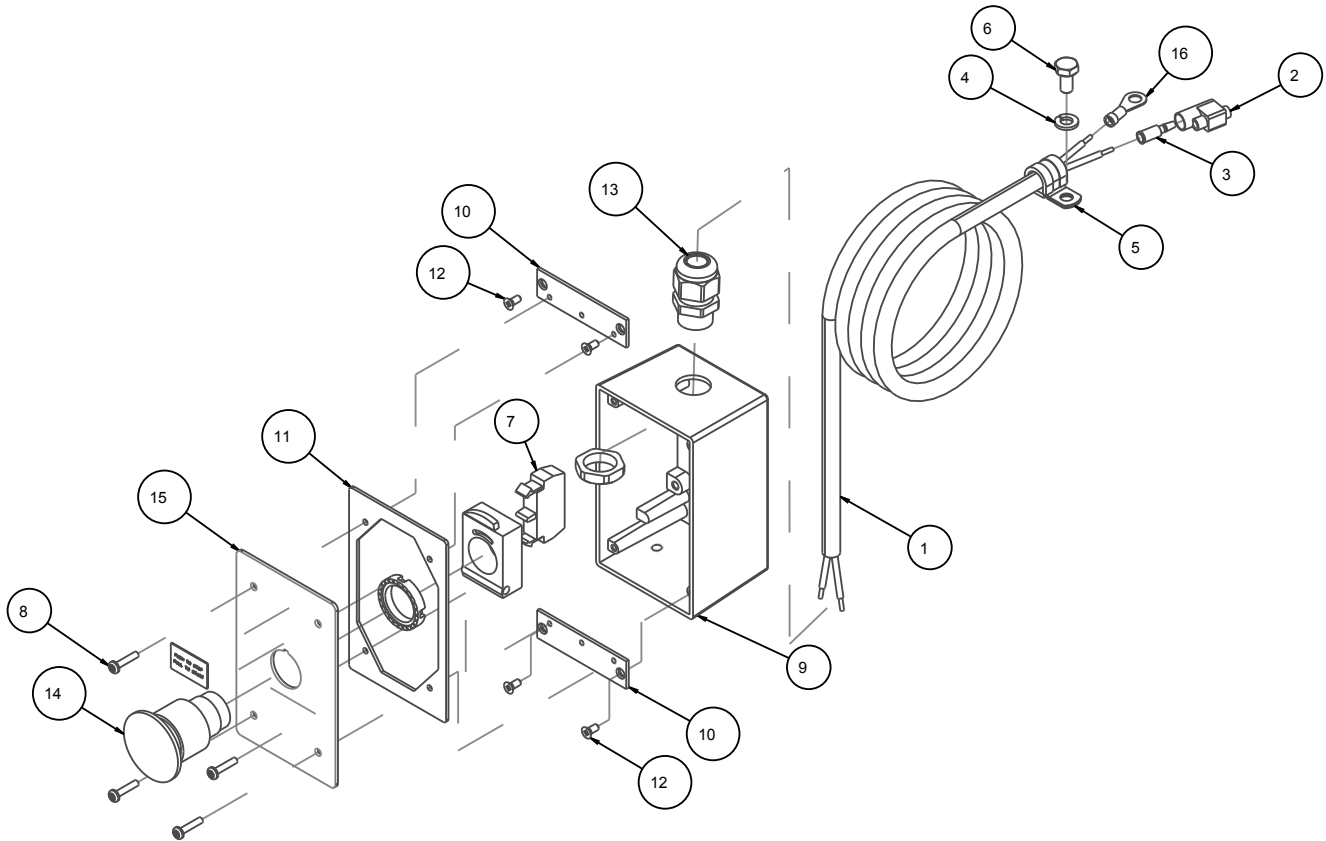


BOM SUBSTITUTION TABLE		MOTOR PULLEY
PART NO.	DESCRIPTION	160365
172547-14	ASSY, ENGINE, HONDA GX390 W/CYC, 14"	158470

FIGURE 22 - MK-5000 ASSY, ENGINE, HONDA, GX390 W/CYC 20/24" P/N 172547

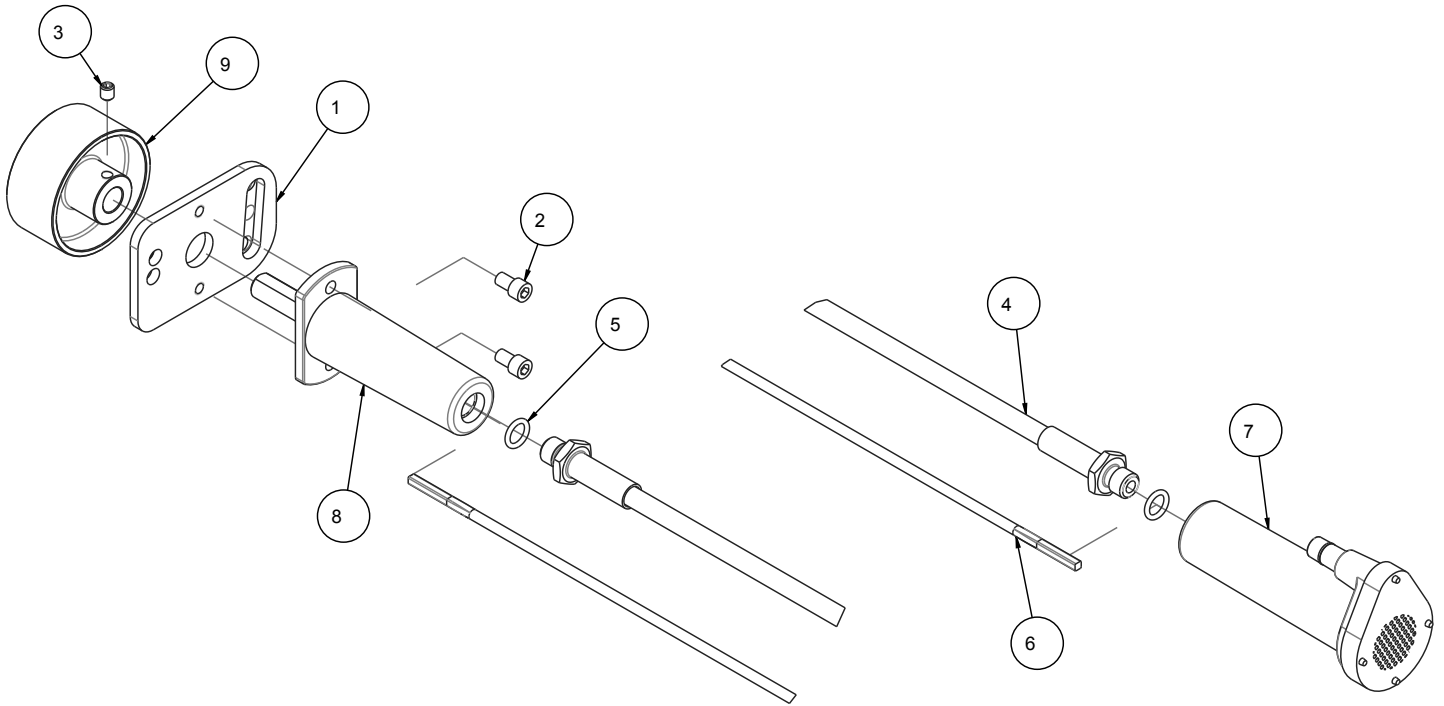
ITEM	DESCRIPTION	PART #	QTY
1	NUT, HEX 3/8-16	101188	8
2	NUT, HEX, 5/16-18	101196	4
3	WASHER, FENDER, 5/16X1-1/2	101527	4
4	SCREW, HEX HD 5/16-18X2-1/2	101675	10
5	SCREW, 3/8-16 X 1-1/4 HEX HEAD CAP	150774	7
6	KEY, 1/4 SQR X 1-3/4	150796	1
7	SCREW, HEX HD, 3/8-16 X 1-3/4	150920	1
8	WASHER, FLAT, SAE, 3/8	150923	17
9	WASHER, LOCK, SPLIT, 3/8	150925	14
10	SCREW, SET, CUP PT, 5/16-18X3/16	151167	4
11	WASHER, LOCK, SPLIT, 5/16	151747	4
12	WASHER, FLAT SAE, 5/16	151754	6
13	ASSY, PUMP, WATER, 5000 GAS	152355	1
14	SCREW, HEX HD CAP, 3/8-16 X 1	152507	2
15	SCREW, HEX HD, CAP, 3/8-16X2	153485	4
16	MOUNT, SHOCK MK-5000	156105	8
17	CASTING, HONDA ENGINE MT-COMP	156140	1
18	GUARD, BELT, INNER, ENGINE-COMP	156148	1
19	GUARD, BELT, OUTER, ENGINE-COMP	156149	1
20	STAND OFF, SHOCK MOUNT	156560	4
21	SCREW, 5/16-18 X 3/8 SOCKET HEAD SET	157084	4
22	KEY, 3/16 X 3/16 X 1-3/4	157561	1
23	HOSE, OIL DRAIN, M12	157577-02	1
24	MOUNT, ENGINE UPPER, MK-5000	158737	1
25	MOUNT, ENGINE LOWER	158738	1
26	PULLEY, 16J28 X .75 BORE	160362	1
27	PULLEY, 16J18 X 1.0 BORE	160365	1
28	BELT, 16J270	160366	1
29	BELT, TENSIONER	160432	1
30	ASSEMBLY, SWITCH, GAS	162537	1
31	ASSY, JACK SHAFT	166045	1
32	ENGINE, HONDA GX390 W/CYC	169260	1

FIGURE 23 - MK-5000 ASSY, SWITCH, GAS P/N 162537



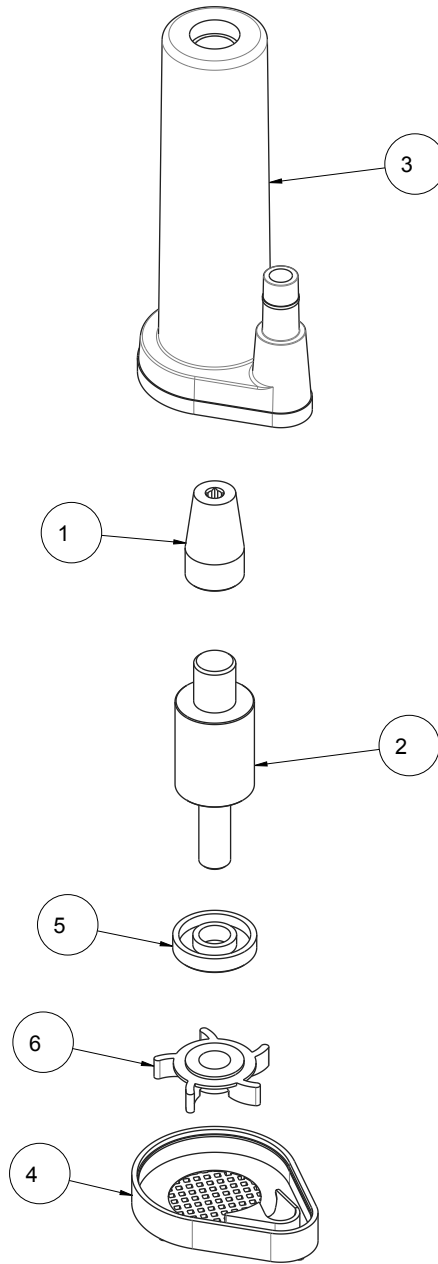
ITEM	DESCRIPTION	PART #	QTY
1	CORD, ELEC, SO 16/2	152422	1
2	CONNECTOR, BULLET RECEPTACLE	152425	1
3	TERMINAL, 16-14 X .156 BLLLT M PI	152426	1
4	WASHER, LOCK, SPLIT, 1/4	152591	1
5	CLAMP, CUSHION LOOP 3/8	152592	1
6	SCREW, 1/4-20 X 1/2 HEX HEAD	152608	1
7	CONTACTS, NO	156202	1
8	SCRW, PAN HD, PHIL 6-32 X 5/8	157393	4
9	BOX, SWITCH, 30 AMP, COMP	159487	1
10	PLATE, MOUNTING, SWITCH	159489	2
11	GASKET, COVER, 30AMP SWITCH	159491	1
12	SCREW, FLAT HD PHIL 6-32 X 5/16	159493	4
13	CONNECTOR, CORD, LTF11	159582	1
14	ASSY, SWITCH BUTTON, GAS	162080	1
15	COVER, SWITCH, STOP, GAS	162081	1
16	TERMINAL, 16-14 X 1/4 RING PI	162538	1

FIGURE 24 - MK-5000 ASSY, PUMP, WATER, 5000 GAS P/N 152355



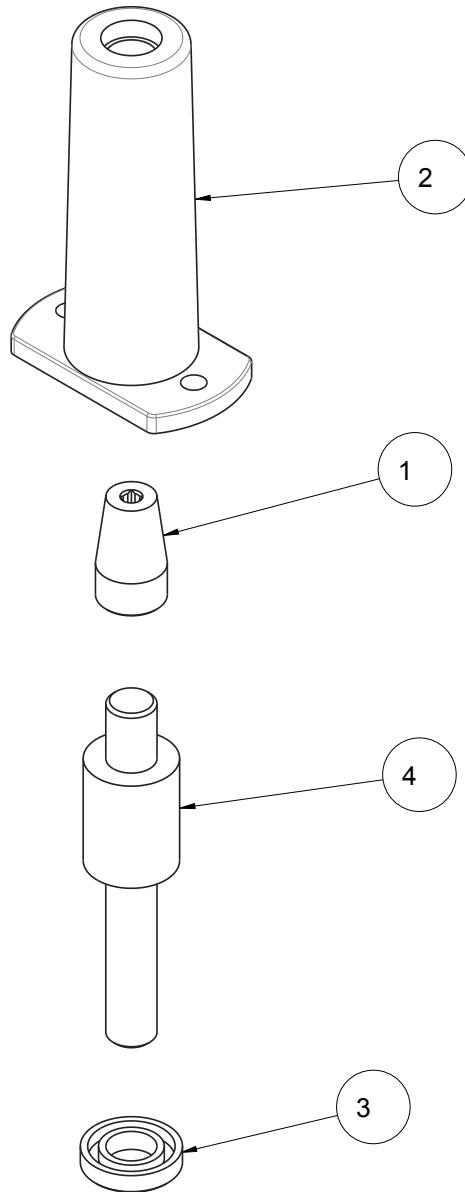
ITEM	DESCRIPTION	PART #	QTY
1	MOUNT, WATER PUMP MK5000/2000	156108	1
2	SCREW, SOC HD, CUP, 5/16-18 X 1/2	156139	2
3	SCREW, SET, KNR CUP, 5/16 -18 X 3/8	157083	1
4	ASSY, HOUSING, 51" FLEX SHAFT	159694	1
5	O-RING, WATER PUMP MK-5000	160175	2
6	SHAFT, FLEX, 53-3/4"L-1/4 DIA	160176	1
7	ASSY, SUB, WATER PUMP	160185	1
8	ASSY, DRIVER, CENTRIFUGAL WATER	160186	1
9	PULLEY, FLAT, 3.0 X 1.5 X 5/8 BORE	160632	1

FIGURE 25 - MK-5000 ASSY, CENTRIFUGAL WATER PUMP, PUMP, P/N 160185



ITEM	DESCRIPTION	PART #	QTY
1	DRIVER, WATER PUMP	159602	1
2	SHAFT & BEARING, PUMP UNIT	159689	1
3	HOUSING, PUMP UNIT	159691	1
4	COVER, PUMP UNIT	159692	1
5	SEAL, 12mm	159696	1
6	IMPELLER	160085	1

FIGURE 26 - MK-5000 ASSY, CENTRIFUGAL WATER PUMP, DRIVER, P/N 160186



ITEM	DESCRIPTION	PART #	QTY
1	DRIVER, WATER PUMP	159602	1
2	HOUSING, WATER PUMP DRIVE	159690	1
3	SEAL, 16mm	159695	1
4	SHAFT & BEARING, DRIVE UNIT	160303	1



MK Diamond Products, Inc.

MK Diamond Products, Inc.
1315 Storm Parkway
Torrance, CA 90501

Toll-Free: (800) 421-5830
Phone: (310) 539-5221
Fax: (310) 539-5158
www.mkdiamond.com