



BD-1272 Track Rail Saw

Owner's & Parts Manual



Revision 304	06.2018
Manual Part No. 165267	

Caution: Read all safety and operating instructions before using this equipment. This manual **MUST** accompany the equipment at all times.

Barranca Diamond Products, Inc.
1315 Storm Parkway
Torrance, CA 90501
Toll-Free: (800) 630-7682
Phone: (310) 523-5867
Fax: (310) 257-3063
www.barrancadiamond.com

We at Barranca Diamond Products want to thank you for selecting the Barranca Diamond BD-1272 Rail Saw. We are certain that you will be pleased with your purchase. Barranca Diamond takes pride in producing top quality and dependable products for both hobbyists and commercial lapidary users throughout the world.

Operated correctly, your BD-1272 Rail Saw should provide you with years of quality service. In order to help you, we have included this owner's manual. This owner's manual contains information necessary to operate and maintain your BD-1272 Rail Saw safely and correctly. Please take the time to familiarize yourself with the BD-1272 Rail Saw by reading and understanding this manual.

If you should have questions concerning your BD-1272 Rail Saw, please feel free to call Barranca Diamond at (310) 523-5867 or toll free (800) 630-7682.

NOTE THIS INFORMATION FOR FUTURE USE:

MODEL NUMBER:	
SERIAL NUMBER:	
PURCHASE PLACE:	
PURCHASE DATE:	

NOTE: For your (1) one year warranty to be effective, complete the warranty card (including the Serial Number) and mail it in as soon as possible.


TRACK RAIL SAW	PAGE NO.
SAFETY	
Safety Message/Alert Symbols	4
Proposition 65	5
Hazard Symbols	6
Electric Motor Safety	7
Rules for Safe Operation	8-9
Operation & Safety Decals	10
PRODUCT SPECIFICATIONS	
Specifications	11
SET-UP	
Rail Assembly	12
Rail Assembly Connector	13
Cutting Head Assembly	14
Material Clamps & Alignment	15
Hose Set-Up	16
OPERATION	
Plunge Cutting for a 90° Cut	17
Plunge Cutting for a Miter Cut	18
MAINTENANCE	
Blade Replacement	19
Filter Replacement	20
Roller Wheel Replacement	21-23
Remove Motor & Blade Guard Assembly from the Carrier Assembly	24
EXPLODED VIEW & PARTS LIST	
Exploded View & Parts List	26-37
Ordering Information	38
Contact Information	39
Limited Warranty	40

Safety precautions should be followed at all times when operating this equipment. Failure to read and understand the Safety Precaution and Operating Instructions could result in injury to yourself and others.

This Operation Manual has been developed to provide complete instructions for the safe and efficient operation of the Track Rail Saw.

Before using this saw, ensure that the person operating the equipment has read and understands all instructions in this manual.

SAFETY MESSAGE / ALERT SYMBOLS

A safety message alerts you to potential hazards that could hurt you or others. Each safety message is preceded by a safety alert symbol () and one of three words: **DANGER**, **WARNING**, or **CAUTION**.

DANGER

You **WILL** be **KILLED** or **SERIOUSLY INJURED** if you do not follow directions.

WARNING

You **CAN** be **KILLED** or **SERIOUSLY INJURED** if you do not follow directions.

CAUTION

You **CAN** be **INJURED** if you do not follow directions. It may also be used to alert against unsafe practices.

Each message tells you what the hazard is, what can happen, and what you can do to avoid or reduce injury. Other important messages are preceded by the word **NOTICE**.

NOTICE

You can cause **PROPERTY DAMAGE** to your machine if you don't follow directions.

The safety labels should be periodically inspected and cleaned by the user to maintain good legibility at a safe viewing distance. If the label is worn, damaged or illegible, it should be replaced. Contact Barranca Diamond or your dealer for replacement.

DAMAGE PREVENTION AND INFORMATION MESSAGES

A Damage Prevention Message is to inform the user of important information and/or instructions that could lead to equipment or other property damage if not followed. Information messages convey information that pertains to the equipment being used. Each message will be preceded by the word **NOTE**, as in the example below.

SILICA DUST WARNING

Grinding/cutting/drilling of masonry, concrete, metal and other materials with silica in their composition may give off dust or mists containing crystalline silica. Silica is a basic component of sand, quartz, brick clay, granite and numerous other minerals and rocks. Repeated and/or substantial inhalation of airborne crystalline silica can cause serious or fatal respiratory diseases, including silicosis. In addition, California and some other authorities have listed respirable crystalline silica as a substance known to cause cancer. When cutting such materials, always follow respiratory precautions.

CALIFORNIA PROPOSITION 65 MESSAGE

Some dust created by power sanding, sawing, grinding, drilling, and other construction activities contain chemicals known (to the State of California) to cause cancer, birth defects or other reproductive harm. Some examples of these chemicals are:

- Lead, from lead-based paints
- Crystalline silica, from bricks and cement and other masonry products
- Arsenic and chromium, from chemically treated lumber

For further information, consult the following sources:

<http://www.osha.gov/dsg/topics/silicacrystalline/index.html>

<http://www.cdc.gov/niosh/docs/96-112/>

<http://oehha.ca.gov/prop65/law/P65law72003.html>

<http://www.dir.ca.gov/Title8/sub4.html>

<http://www.P65warnings.ca.gov>

Your risk from these exposures varies depending on how often you do this type of work. To reduce your exposure to these chemicals, work in a well-ventilated area, and work with approved safety equipment, such as dust masks that are specially designed to filter out microscopic particles. Where use of a dust extraction device is possible, it should be used. To achieve a high level of dust collection, use an industrial HEPA vacuum cleaner. Observe OSHA 29 CFR part 1926.57 and 1926.103.

Potential hazards associated with the MK Diamond Track Rail Saw will be referenced with Hazard Symbols which appear throughout this manual, and will be referenced in conjunction with Safety Message Alert Symbols.

HAZARD SYMBOLS



ALWAYS read this Owner's Manual before operating the machine.



ALWAYS wear approved eye protection.



ALWAYS wear approved ear protection.



ALWAYS wear approved respiratory protection.



ALWAYS wear a hard hat.



ALWAYS avoid inhalation of and skin contact with silica dust and/or mist.

**WARNING**

DO NOT use woodcutting, or carbide blades on this machine! Use **ONLY** Diamond blades on machine. Use machine only to cut tile and masonry products. **DO NOT** use machine to cut wood or wood products.

ELECTRIC MOTOR SAFETY

For maintenance care and operation of the electric motor, refer to your electric motor instruction booklet furnished with the electric motor.

Protect the electric motor from dust as much as possible and keep ventilating openings clean.

**CAUTION**

- **DO NOT** spray water at any time on the electric motor.
- **DO NOT** operate electric motor in an explosive environment.

Electric Motor Connection

The table below shows the matching NEMA approved connector for the required extension cord.

ALWAYS make certain that the power source required for the electric motor is correct and always use the correct NEMA configuration plug. Failure to supply the correct voltage to the motor can severely damage the motor. Make certain that the correct size grounded (3-wires) extension cord is used. See the table below.

Motors can burn out when the line voltage falls 10% below the voltage rating of the motor. Failure to use proper voltage will cause the motor to overheat.

MOTOR SPECS			EXTENSION CORD LENGTH			
Motor	Voltage	Amps	25'	50'	100'	200'
157801	115V 1 Ph	15	14 ga	10 ga	8 ga	4 ga

RULES FOR SAFE OPERATION



DANGER

Failure to follow instructions in this manual may lead to serious injury or even death! This equipment is to be operated by trained and qualified personnel only! This equipment is for industrial use only.

The following safety guidelines should always be used when operating the Track Rail Saw.

GENERAL SAFETY



- **DO NOT** operate or service this equipment before reading this entire manual.

- This equipment should not be operated by persons under 18 years of age.
- **NEVER** operate this equipment without proper protective clothing, shatterproof glasses, steeltoed boots and other protective devices required by the job.
- **NEVER** operate this equipment when not feeling well due to fatigue, illness or taking medicine.
- **NEVER** operate this equipment under the influence of drugs or alcohol.
- Whenever necessary, replace nameplate, operation and safety decals when they become difficult to read.
- **ALWAYS** check the machine for loose bolts before starting.



- **ALWAYS** wear proper respiratory (mask) hearing and eye protection equipment when operating this machine.

- **ALWAYS** store equipment properly when it is not being used. Equipment should be stored in a clean, dry location out of the reach of children.



- **NEVER** leave the machine unattended. Turn off electric motor when unattended.

- **CAUTION** must be observed while servicing the machine. Rotating parts can cause injury if contacted.
- Ensure that any electrical extension cord is protected against damage. Always ensure that the electrical extension cord is not trapped underneath the machine. When using an extension cord, be sure to use one heavy enough to carry the current your product will draw. An undersized cord will cause a drop in line voltage that will result in a loss of power and overheating. The Table shown on page 11 shows the correct AWG size to use depending on cord length and nameplate ampere rating. If in doubt, use the next heaviest gage. The smaller the gage number, the heavier the cord.



- **DO NOT** allow extension cord to come into contact with water or fluids.
- **DO NOT** spray water onto electric motor.
- **NEVER** operate the machine in an explosive atmosphere.

- Before starting the machine, check that all guards are in position and correctly fitted.
- Keep area around the machine clear of obstructions which could cause persons to fall onto moving parts.
- **ALWAYS** ensure that the machine is on level ground before using.
- **DO NOT** overreach. Keep proper footing and balance at all times.

- **NEVER** stand on the tool. Serious injury could occur if a power tool is tipped, or if a cutting tool is unintentionally contacted.
- Become familiar with the controls of the machine before operating. Know how to stop the machine quickly in case of emergency.
- **ALWAYS** secure work. Clamps or a vise should be used to hold work whenever practical. Keeping your hands free to operate a power tool is safer.
- **ALWAYS** disconnect AC power plug from power source before moving, cleaning or servicing the machine.
- **NEVER** leave a tool running unattended. Do not leave a tool until it comes to a complete stop. **ALWAYS** turn a power tool **OFF** when leaving the work area, or when a cut is finished.
- Make sure the OFF/ON power switch on the electric motor is always in the **OFF** position before inserting the machine's power plug into an AC receptacle.
- Operate electric motor only at the specified voltage indicated on the nameplate.
- **NEVER** disconnect any "emergency or safety devices". These devices are intended for operator safety. Disconnection of these devices can cause severe injury, bodily harm or even death! Disconnection of any of these devices will void all warranties.
- Unauthorized equipment modifications will void all warranties. Manufacturer does not assume responsibility for any accident due to equipment modifications.
- **NEVER** use accessories or attachments, which are not recommended by MK Diamond for this equipment. Damage to the equipment and/or injury to user may result.
- Replace damaged cutting blade before operating.
- **NEVER** try to stop a moving blade with your hand.

**WARNING**

NEVER use this machine with any cutter designed for wood working.

MAINTENANCE SAFETY

- **NEVER** lubricate components or attempt service on a running machine.
- Keep the machinery in proper running condition.
- Before using a power tool, check for damaged parts. A guard or any other part that is damaged should be carefully checked to determine if it would operate properly and perform its intended function. Always check moving parts for proper alignment or binding. Check for broken parts and mountings and all other conditions that may affect the operation of the power tool. A guard, or any damaged part, should be properly repaired or replaced.

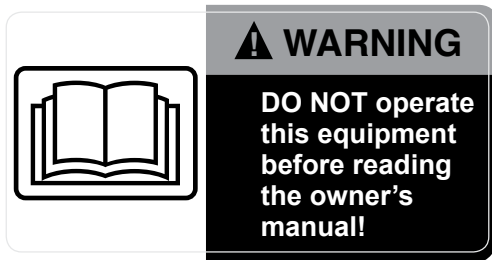
SAW SAFETY

**WARNING**

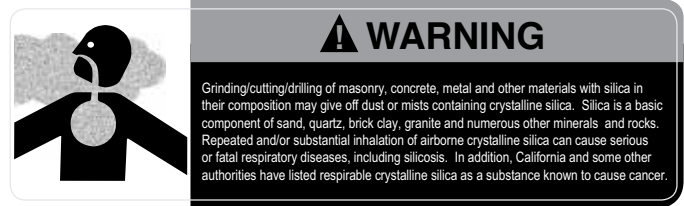
- Wear eye protection.
- Disconnect saw before servicing, when changing cutting blades and cleaning.
- Replace damaged cutting blade before operation.
- Remove adjusting keys and wrenches.

OPERATION & SAFETY DECALS

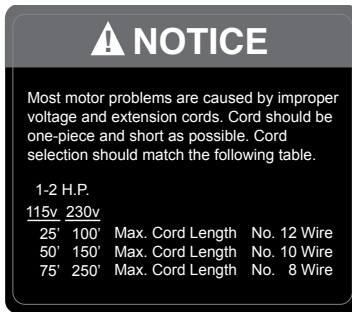
The BD-1272 Rail Saw is equipped with a number of safety decals. These decals are provided for operator safety and maintenance information. The illustration below also shows the location of these decals. Should any of these operation or safety decals become unreadable, replacements can be obtained by calling (800) 262-1575.



Decal A



Decal B



Decal C



Decal D

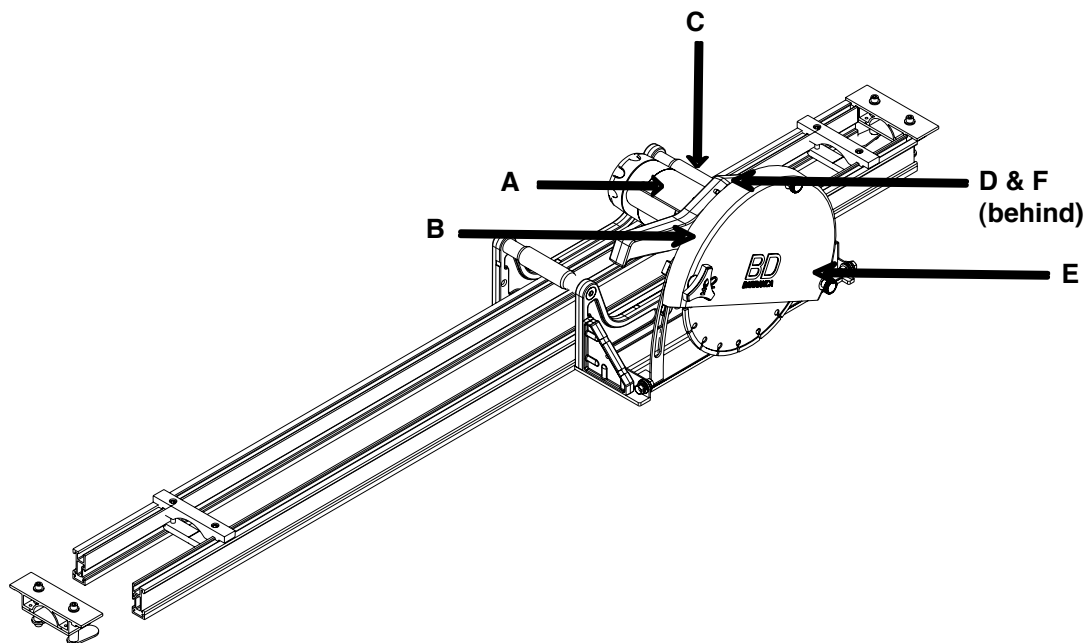


Decal F



Decal E

Figure 1. Safety Decal Sheet, Part No. 166011

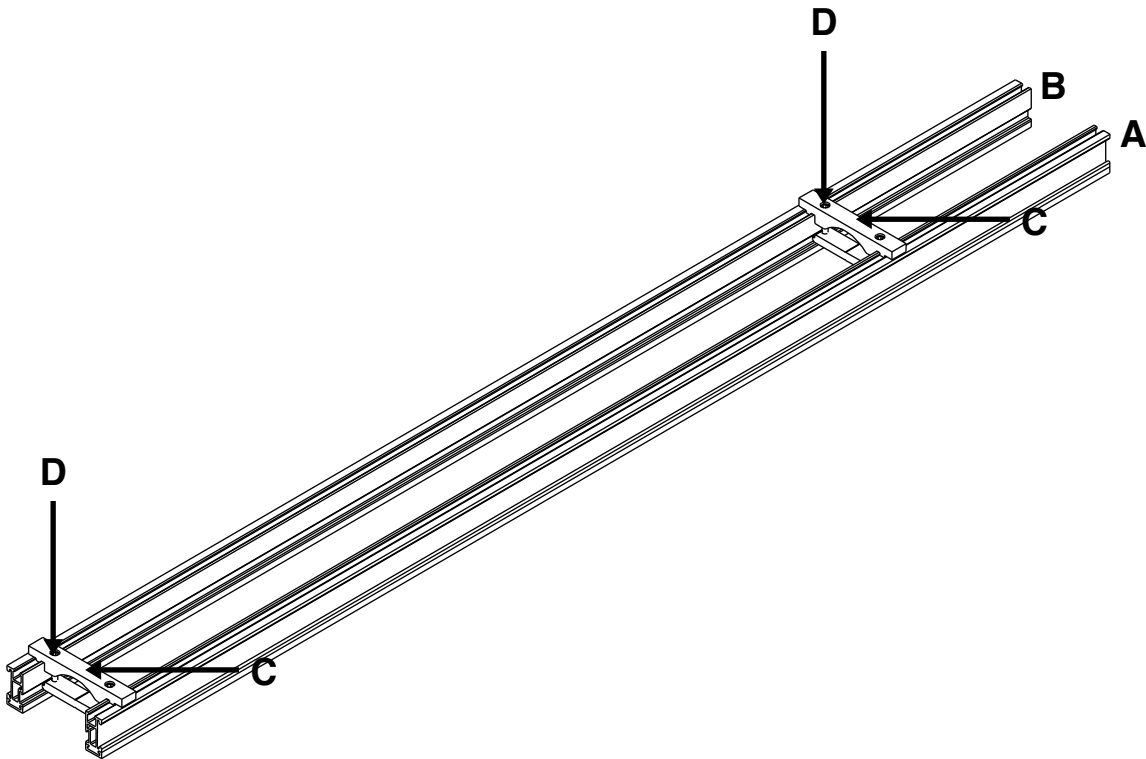


BD-1272 Saw Specifications	
Model	164920
Motor	120V 50/60 Hz
Amps	15
Horsepower	1-3/4" HP
Blade RPM	3,500
Blade Capacity	12" (254 mm)
Arbor Size	1" (25.4 mm)
Standard Length of Cut	130" (3,202mm)
Maximum Depth of Cut	2-7/8" (73mm)
Depth of Cut at 45°	2-1/4 (57mm)
Weight	95 lbs. (43kgs.)
Dimensions (LxWxH) - inches	144" x 16" x 13"
Dimensions (LxWxH) - millimeters	3,658 x 406 x 330

- Adjustable height plunge-cutting head
- Lightweight precision extruded aluminum rails provide accurate and even tracking during all cutting operations
- Rails have replaceable slip-on pads to protect material surface from scratches
- Precision, maintenance-free bearings provide smooth and reliable tracking of the cutting head
- Replaceable dust filter
- Valve controlled water feed
- 72" 120V standard U-ground electrical cord
- Saw comes complete with two sets of 72" rail, rail connector plate, 12" blade capacity cutting head, two hold-down clamps and standard garden hose water connector
- Additional rails for extending cutting capacity sold separately

RAIL ASSEMBLY

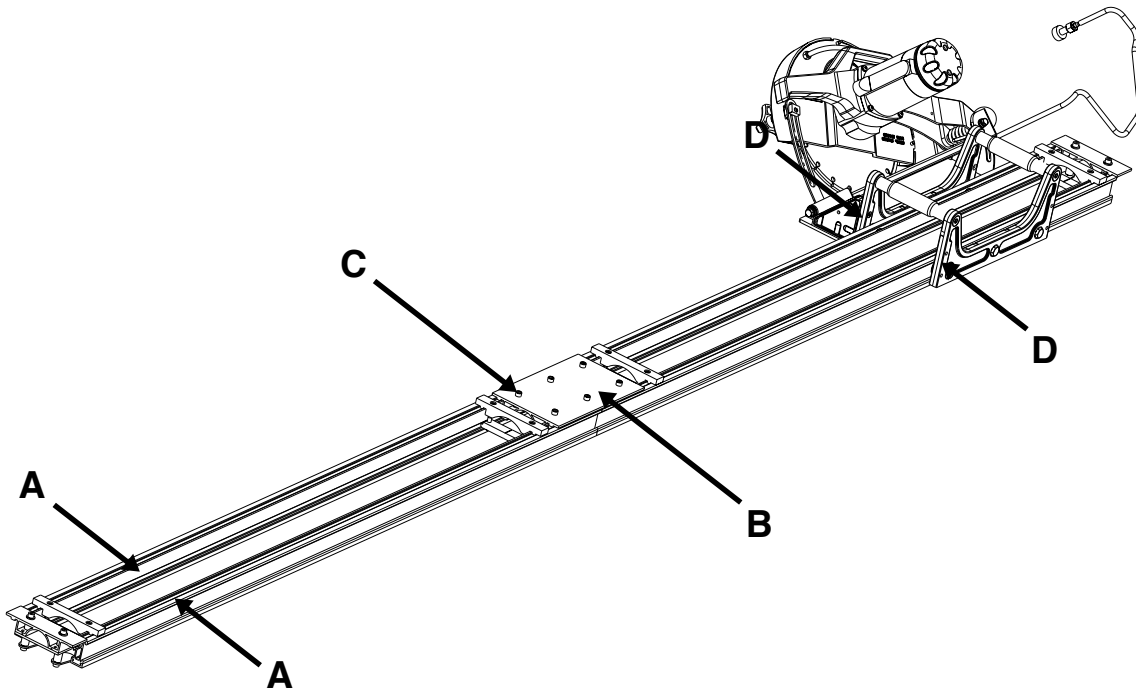
1. Lay Rails (A & B) on a flat and leveled surface.
2. Align ends of Rails.
3. Slide Parallel Rail Support Brackets (C) from both ends of rail.
4. Tighten screws until Brackets hold Rails firmly in place (D).
5. Repeat Step 1 through 4 if a length of more than 6 feet is needed.



RAIL ASSEMBLY CONNECTOR

The Rail Connector Assembly is required to hold two Rail Assemblies together.

1. Slide the Rail Assembly (A) into the Connector Plate Assembly (B).
2. Tighten screws (C) lightly until connector plate is firmly seated.
3. Slide the other half of the Rail Assembly (D) into the Rail Connector Assembly (B).
4. Fully tighten screws.



CUTTING HEAD ASSEMBLY

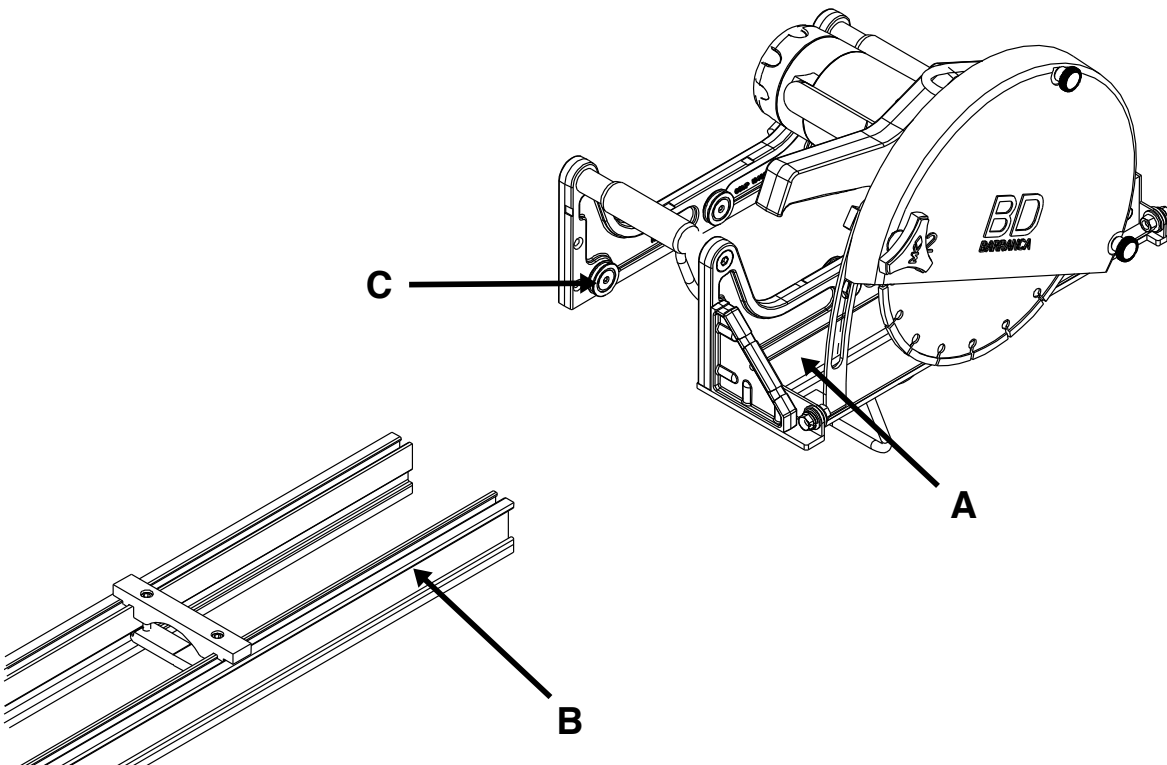
The Cutting Head Assembly is pre-assembled and aligned at the factory.



WARNING

Ensure that the power is disconnected before installing the Cutting Head Assembly to Rails.

1. Place the Rail Assembly (B) on slab.
2. Slide the Cutting Head Assembly (A) until the Carrier Wheels (C) are over Rail Assembly (B).
3. Move the Cutting Head Assembly along the Rail Assembly with a sliding motion.

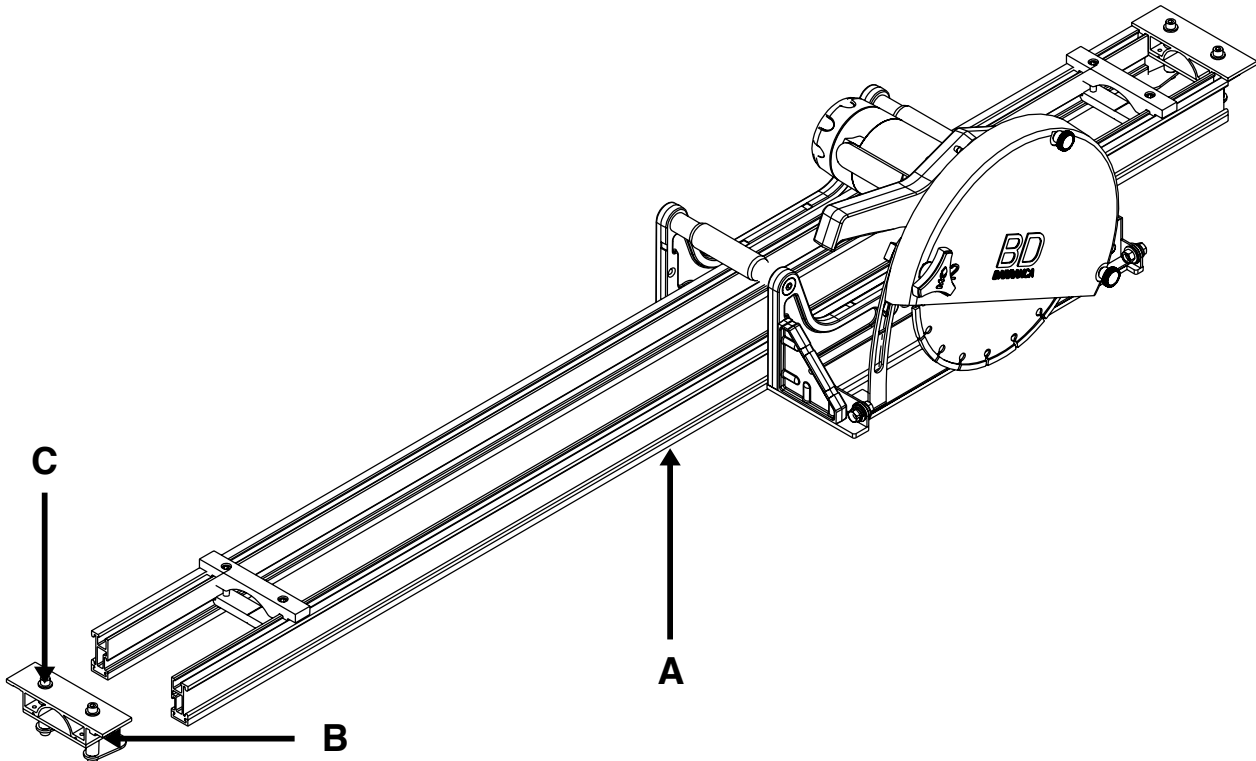


MATERIAL CLAMPS & ALIGNMENT

! WARNING

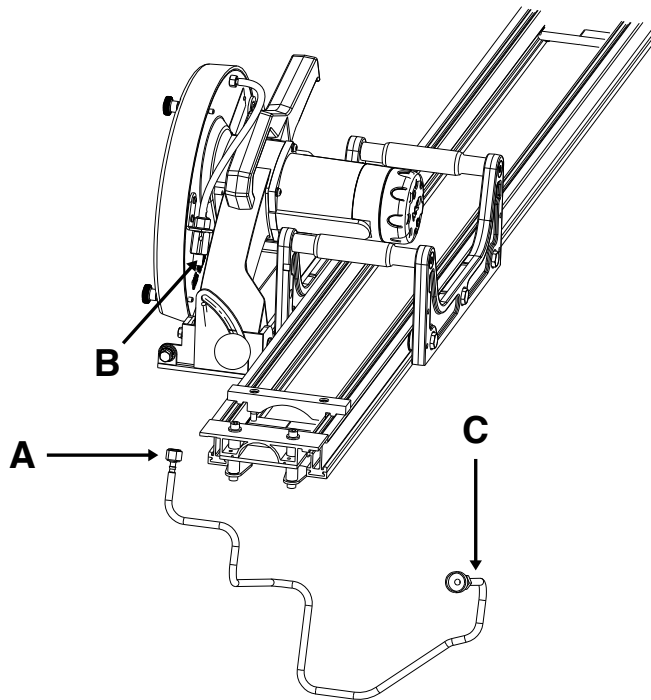
Ensure that the electrical cord is not connected before assembling and aligning material clamps.

1. Position Saw Assembly (A) on the slab. The inner side of the blade is approximately 6.25 inches from the top edge of the aluminum rail.
2. Slide the Material Clamps from both ends of the Rail Assembly until the Clamp Foot (B) is underneath the slab.
3. Tighten screws (C) until the Saw Assembly is secured to the slab without any side movement.
4. To realign the Rail Assembly, slightly loosen the Material Clamps. Realign the Rail Assembly by tapping the ends of the Rail Assembly.
5. Repeat Steps 3 and 4 if realignment is necessary.



HOSE SET-UP

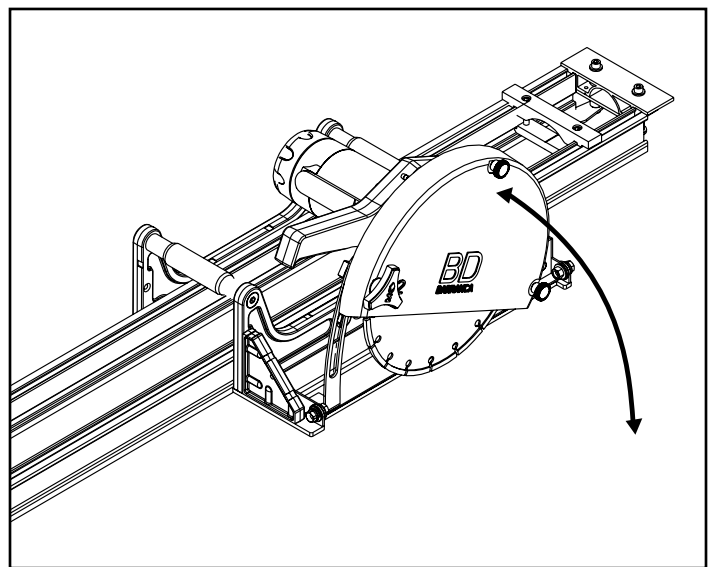
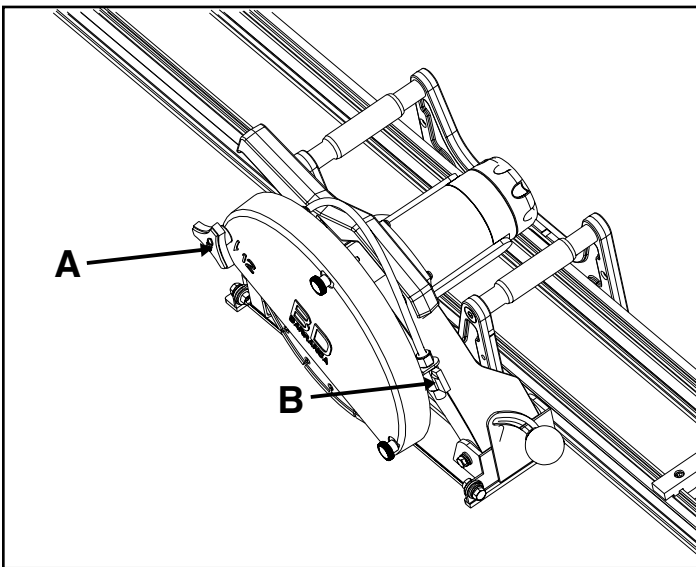
1. Connect Plastic Fitting (A) to Nipple (B).
2. Connect Hose Fitting (C) to Water Hose.



PLUNGE CUTTING FOR A 90° CUT**CAUTION**

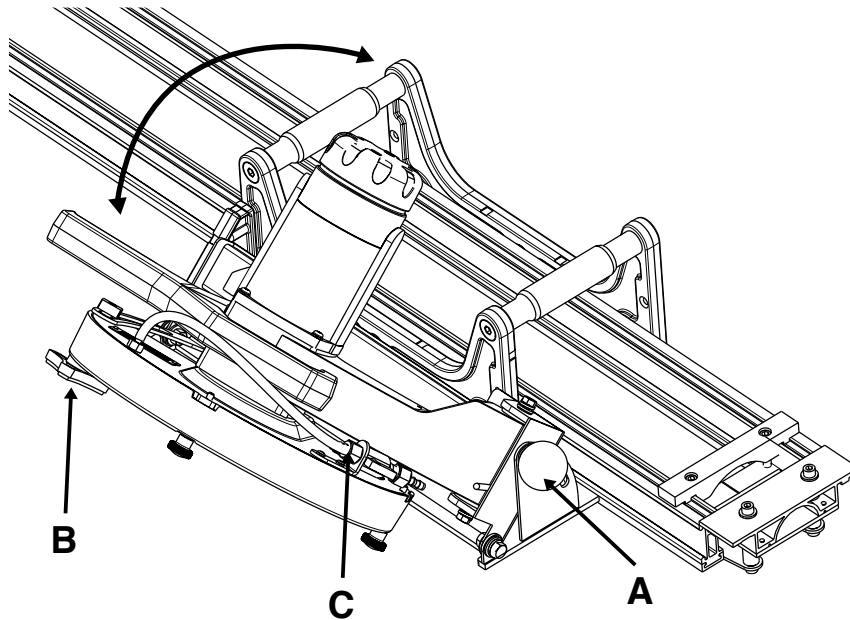
Always use a Grounded Fault Circuit Interrupter (GFCI) with this saw.

1. Loosen the Tri-Knob (A). Raise the blade to the highest position and move the Saw Assembly to the beginning of the cut.
2. Adjust the Valve (B) for the desired amount of water flow.
3. Depress motor switch and lower the blade slowly into the material.
4. Tighten the Tri-Knob (A) once the blade cuts through the material. Follow the direction of the cut.



PLUNGE CUTTING FOR A MITER CUT

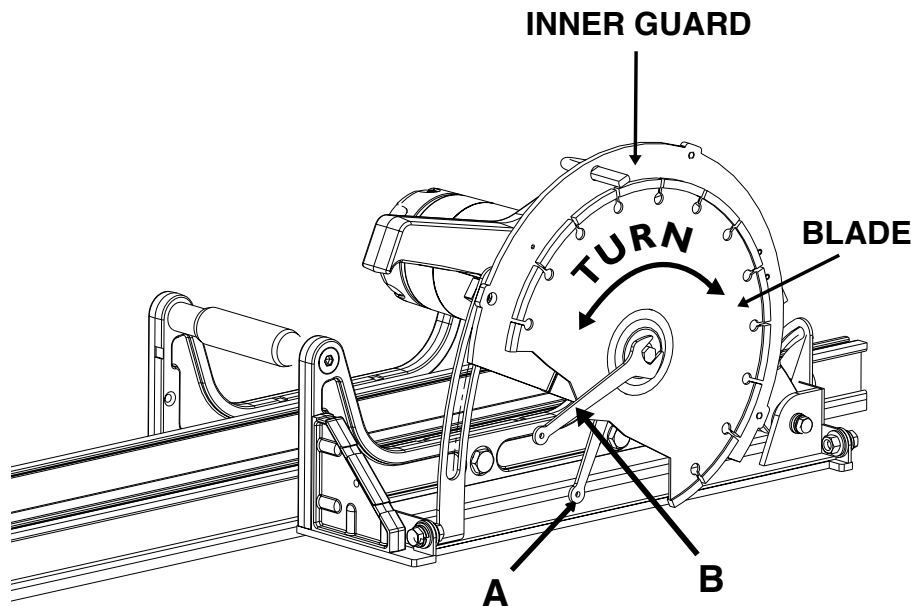
1. Loosen the Round Knob (A) and adjust the blade to the desired angle (0-45 degrees). Tighten the Round Knob. Recheck the set angle along the entire rail system.
2. Loosen the Tri-Knob (B). Raise the blade to the highest position and move the Saw Assembly to the beginning of the cut.
3. Adjust the Valve (C) for the desired amount of water flow.
4. Depress motor switch and lower the blade slowly into the material.
5. Tighten the Tri-Knob (B) once the blade cuts through the material. Follow the direction of the cut.



BLADE REPLACEMENT**! WARNING**

Always disconnect the unit from the power supply.

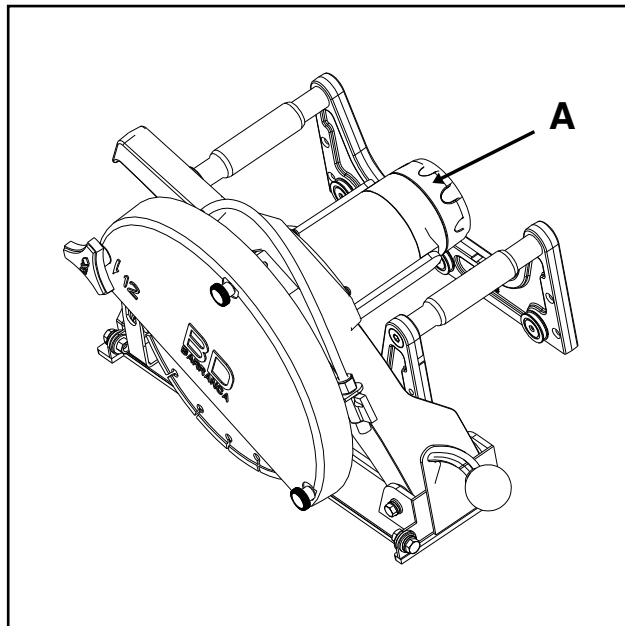
1. Remove knobs on outer blade guard.
2. Remove the Blade Guard.
3. Use the open wrenches provided with this unit. Place wrench (A) over the flats on blade shaft (located on the inner side of the blade). Hold the wrench stationary. Place wrench (B) on the Hex Screw at the end of the blade shaft. Turn wrench (B) counter-clockwise to remove the screw.
4. Replace the blade and ensure that the blade is oriented with the arrow in a counterclockwise position. Tighten the screw clockwise to secure the new blade.
5. Rotate the blade by hand to check it for tightness.

**! CAUTION**

Diamond Blades improperly used are dangerous. Comply with American National Standards Institute Safety Code, B7.1 and, Occupational Safety and Health Act covering Speed, Safety Guards, Flanges, Mounting Procedures, General Operating Rules, Handling, Storage and General Machine Conditions.

FILTER REPLACEMENT

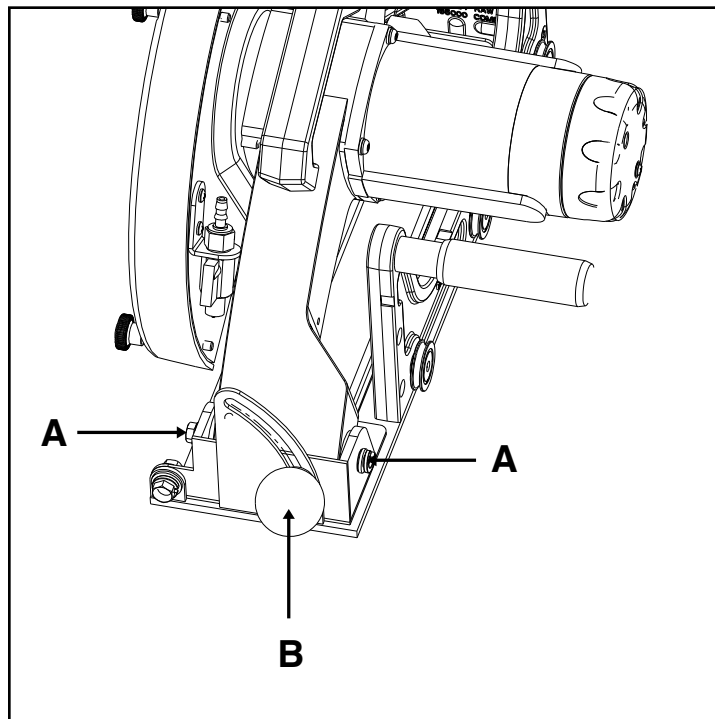
1. Pull Filter Cap (A) off.
2. Replace Filter.
3. Snap Filter Cap back on.

**B**

ROLLER WHEEL REPLACEMENT**WARNING**

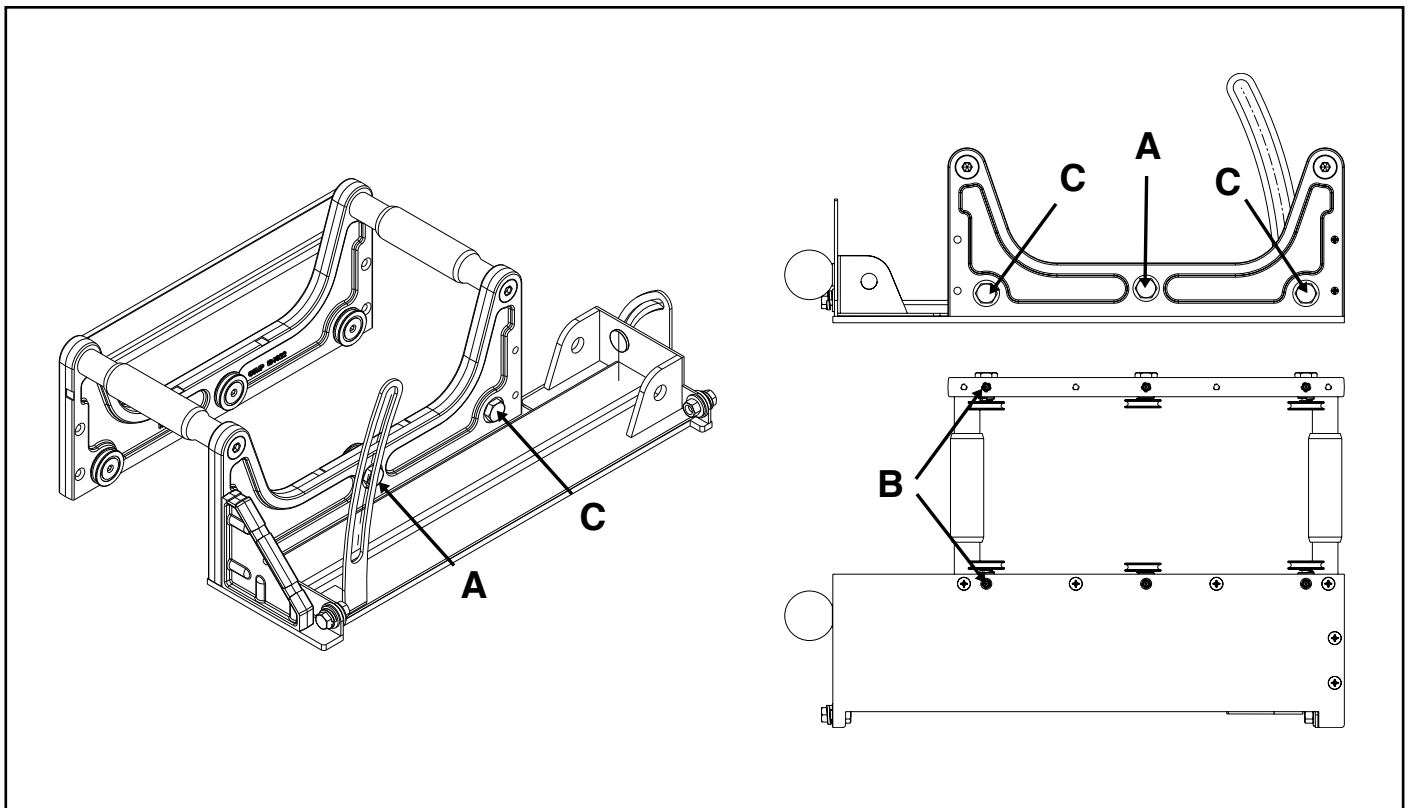
Disconnect the unit from the power supply.

1. Remove the Hex Screws (A) and Round Knob (B).
2. Remove Motor and Blade Guard Assembly from the Carrier Assembly.
3. Remove Carrier Assembly from the Rail Assembly. Place the Carrier Assembly on a flat and level surface.



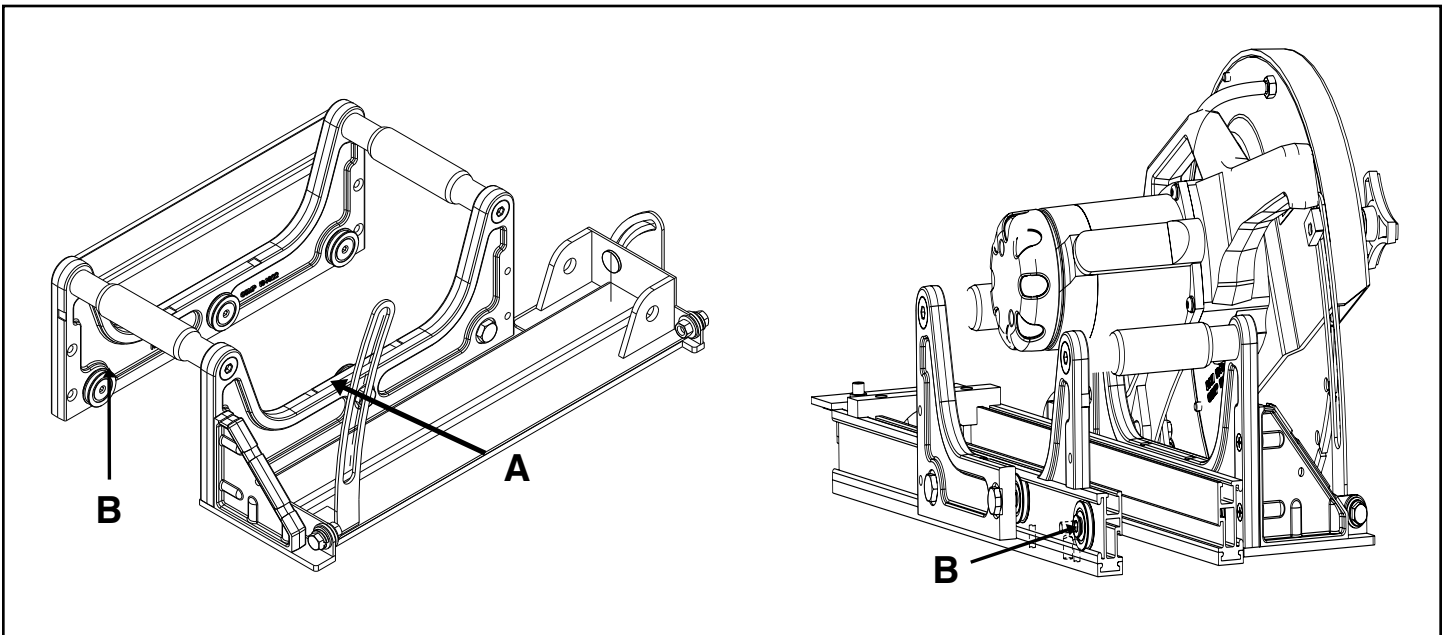
ROLLER WHEEL REPLACEMENT

4. Unscrew the wheel(s) with a 3/16 hex key. Ensure that the eccentric bushings (A) and straight bushings (C), located in the middle of each carrier casting, do not move.
5. Install new wheels by screwing into bushings.
6. Slide the Carrier Assembly back in the rail to check for wheel alignment.
7. If carrier assembly does not line up with rails, loosen set screw(s) (B) located on the bottom of carrier legs.
8. Align straight bushing(s) (C) so groove on wheel is centered on rail rib. Hold bushing in place while tightening set screw. **DO NOT FULLY TIGHTEN AT THIS TIME.**



ROLLER WHEEL REPLACEMENT

9. Position eccentric bushing(s) (A) until the groove on the wheel lines up with the center of the rail rib. Turn the eccentric bushing(s) (A) until the radial groove of the wheel touches lightly with the top of the rail rib. Hold the eccentric bushing(s) stationary while tightening down set screw(s) (B) lightly. Groove aligns with center of upper rail rib. Turn eccentric bushing until wheel groove lightly contacts upper rail rib. Hold eccentric bushing in place while tightening set screws. **DO NOT FULLY TIGHTEN AT THE TIME.**
10. Repeat Steps 7 through 10, if necessary.
11. Tighten all set screws (B).
12. Reinstall the motor and blade guard assembly.
13. Recheck for wheel alignment and smoothness of travel.



REMOVE MOTOR AND BLADE GUARD ASSEMBLY FROM THE CARRIER ASSEMBLY



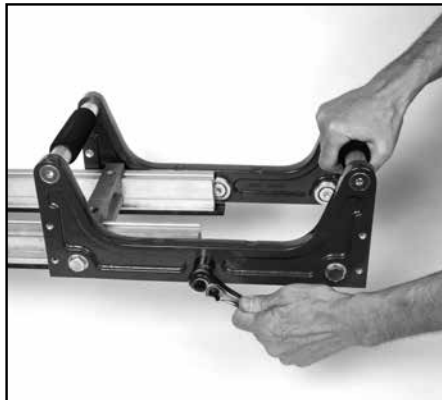
(A)

Unlock set screws on each wheel.



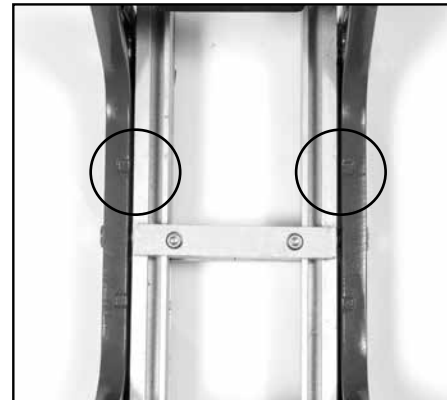
(B)

Place Carrier Assembly on the rail.



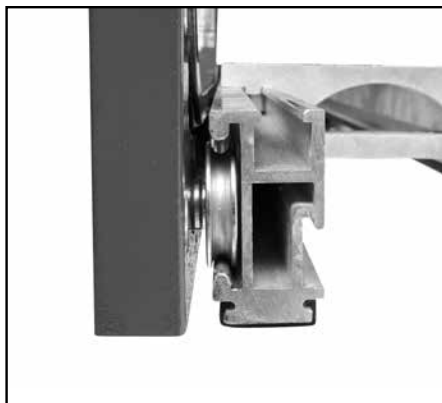
(C)

If Carrier Assembly is difficult to put on rails, loosen the center wheels with a 3/4" socket.



(D)

Align the Carriage Assembly to be evenly spaced with rails, from side to side.



(E)

Ensure wheels are aligned in rail properly, so groove on wheel is centered on rail rib. Tighten the four corner set screws.



(F)

Using a socket wrench turn adjustments of center wheel so the wheel touches the top of the rail to restrict movement slightly. Tighten center set screws. Repeat on other side.

NOTES

FIGURE 1 BD-1272 TRACK RAIL SAW P/N 164920

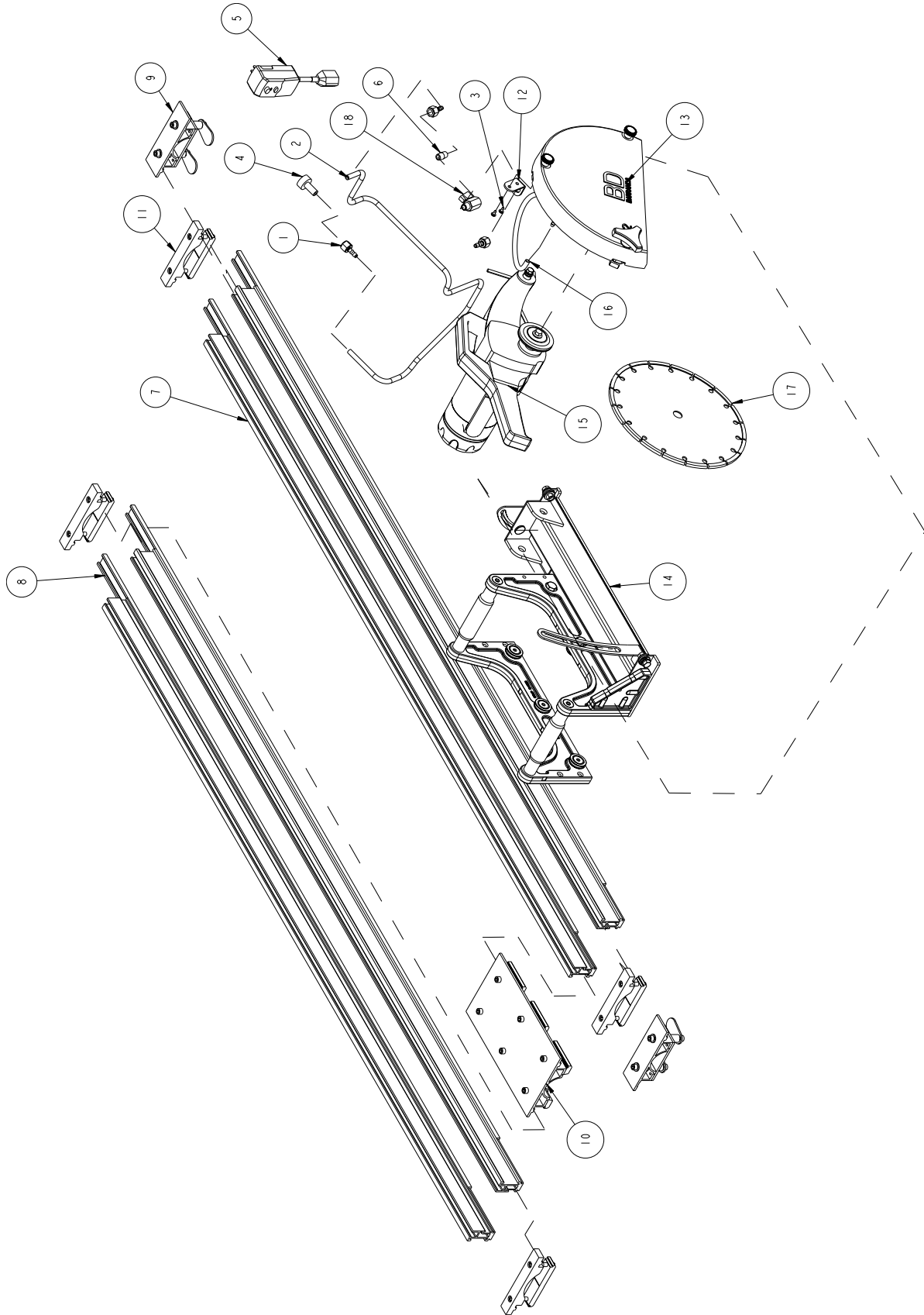


FIGURE 1 BD-1272 TRACK RAIL SAW P/N 164920

ITEM	DESCRIPTION	PART #.	QTY.
1	FITTING, PLASTIC, 1/4 FNPT X 1/4 BARB	128397	3
2	HOSE, VINYL, 3/8 X 1/4 X 6 FT	132951	1
3	SCREW, PAN HD SELF TP10-24 X 3/8	151262	2
4	FITTING, HOSE, 1/4 MNPT	152525	1
5	GFCI, 120V, 15A	152610	1
6	NIPPLE, 1/4 NPT X CLOSE, BRASS	159905	1
7	RAIL, TRACK SAW	164926	4
8	FOOT, RAIL	164944	4
9	CLAMP, RAIL SAW MATERIAL	165113	2
10	ASSY, RAIL CONNECTOR PLATE	165268	1
11	ASSY, PARALLEL RAIL SUPPORT BRACKET	165269	4
12	BRACKET, WATER VALVE	165478	1
13	ASSY, BLADE GUARD	165499	1
14	ASSY, MAIN CARRIER	165500	1
15	ASSY, CUTTING HEAD	165501	1
16	HOSE, 3/8 X 1/4 X 10"	165506	1
17	BLADE, 12"	165921	1
18	VALVE, BALL, 1/4"M TO 1/4"F	231248	1

FIGURE 2 BD-1272 TRACK RAIL SAW P/N 165500

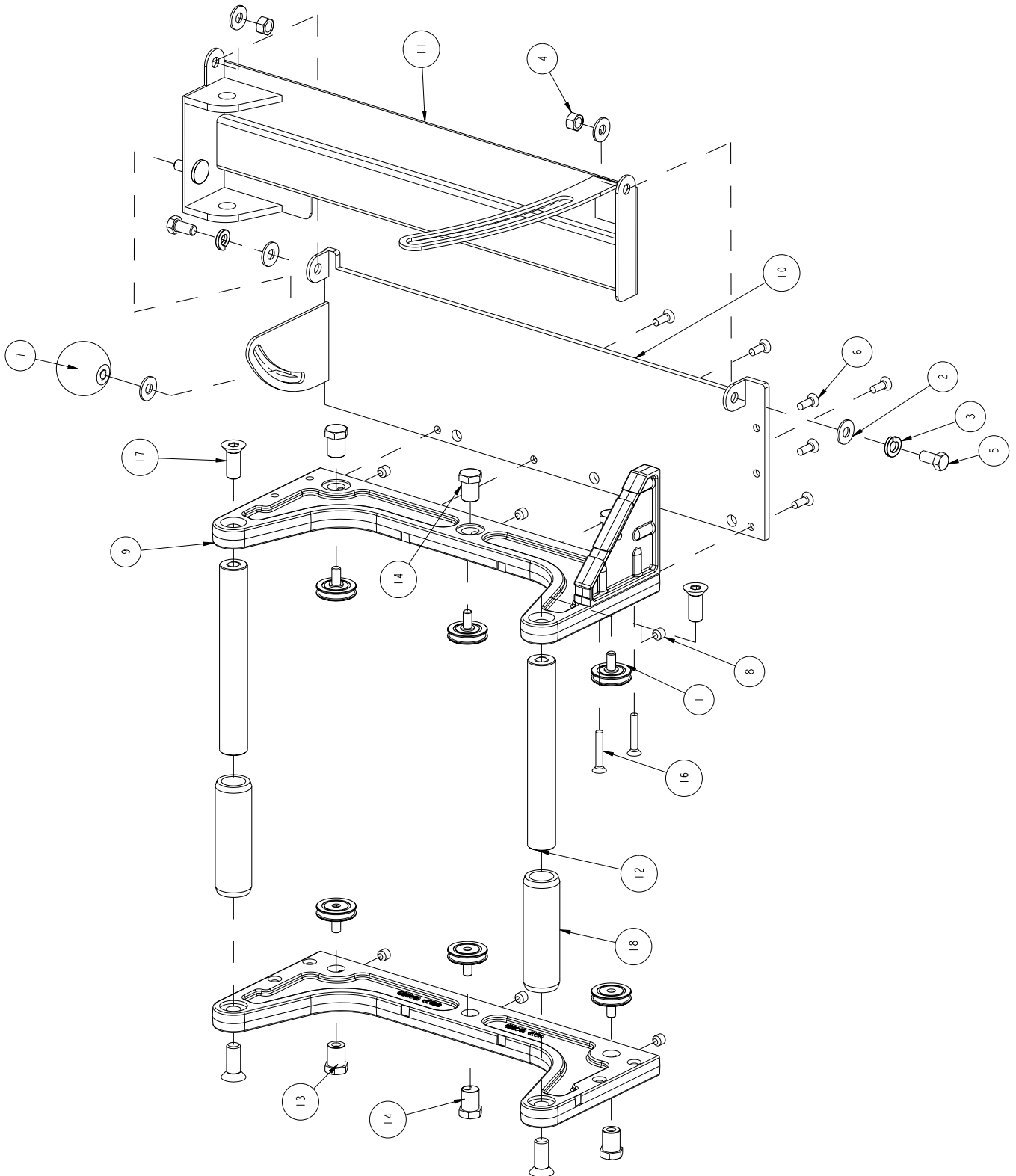


FIGURE 2 BD-1272 TRACK RAIL SAW P/N 165500

ITEM	DESCRIPTION	PART #	QTY.
1	WHEEL, CONVEYOR CART	133090	6
2	WASHER, 3/8 SAE FLAT	150923	5
3	WASHER, 3/8 SPLIT LOCK	150925	2
4	NUT, 3/8-16 HEX CENTERLOCK	153522	2
5	SCREW, 3/8-16 X 3/4 HEX HEAD CAP	153527	2
6	SCREW, 1/4-20 X 3/4 FLAT HEAD PHILLIPS MACHINE	154657	6
7	KNOB, BALL, 2", 3/8-16 INSERT	158519	1
8	SCREW, 3/8-16 X 3/8 SOCKET HEAD SET, CUP POINT	160713	6
9	CARRIER, CART WHEEL (COMP)	164922	2
10	BASE, INNER PIVOT	164923	1
11	BASE, TRACK RAIL SAW PIVOT	164925	1
12	SUPPORT, TRACK RAIL CROSS	164931	2
13	AXLE, CONVEYOR WHEEL	164932	4
14	AXLE, ADJ CONVEYOR WHEEL	164933	2
15	GUSSET (COMP)	165000	1
16	SCREW, 1/4-20 X 3/4 FLAT HEAD PHILLIPS MACHINE	165120	2
17	SCREW, 1/2-13 X 1-1/4 FLAT HEAD	165164	4
18	GRIP, HANDLE	229413	2

FIGURE 3 BD-1272 TRACK RAIL SAW P/N 165501

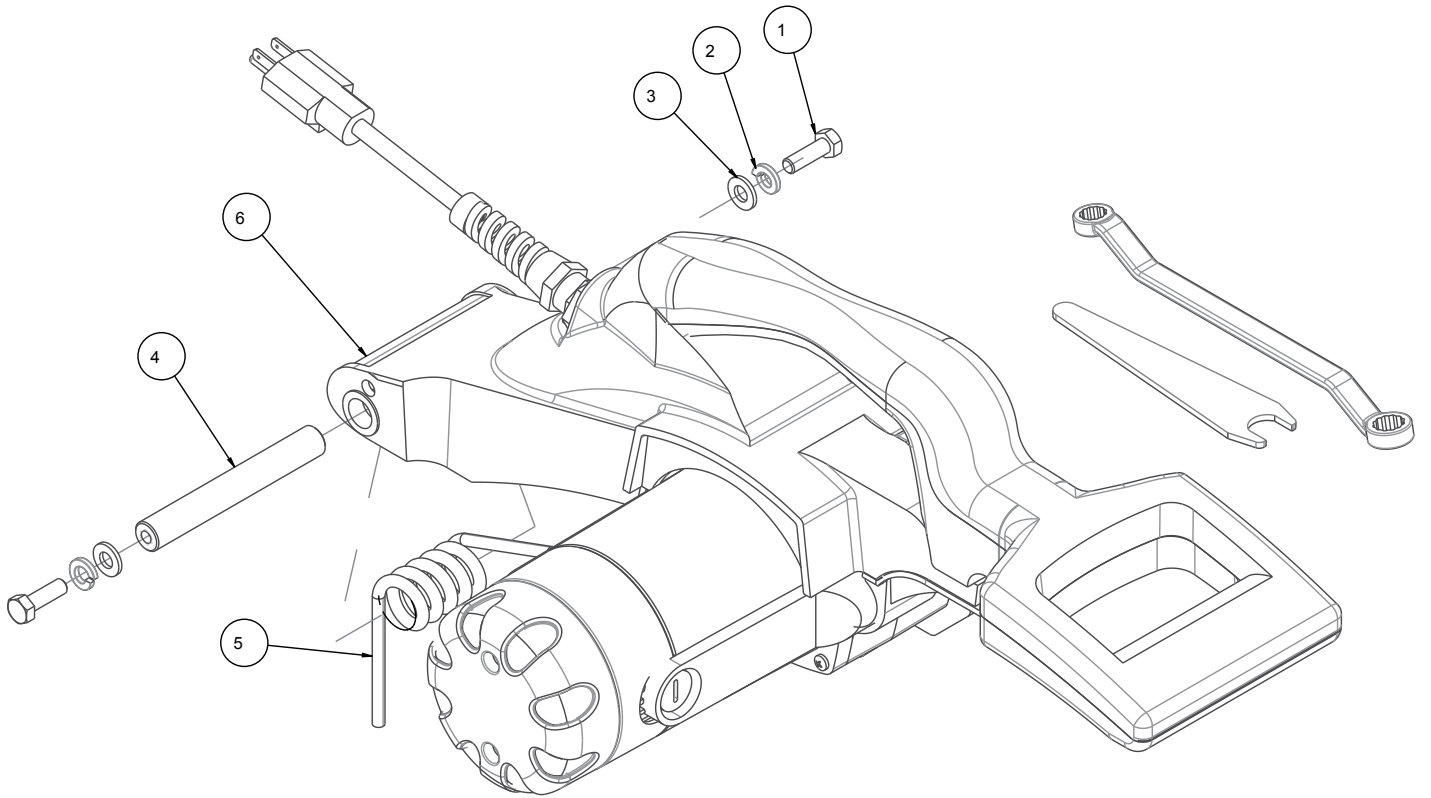


FIGURE 3 BD-1272 TRACK RAIL SAW P/N 165501

ITEM	DESCRIPTION	PART#	QTY.
1	SCREW, HEX HD, 5/16-18X1	151743	2
2	WASHER, 5/16 SPLIT LOCK	151747	2
3	WASHER, 5/16 SAE FLAT	151754	2
4	PIN, PIVOT	164934	1
5	SPRING, 70' TORSION	165272	1
6	ASSY, MOTOR & ARM	166906	1

FIGURE 4 BD-1272 TRACK RAIL SAW P/N 166906-NL

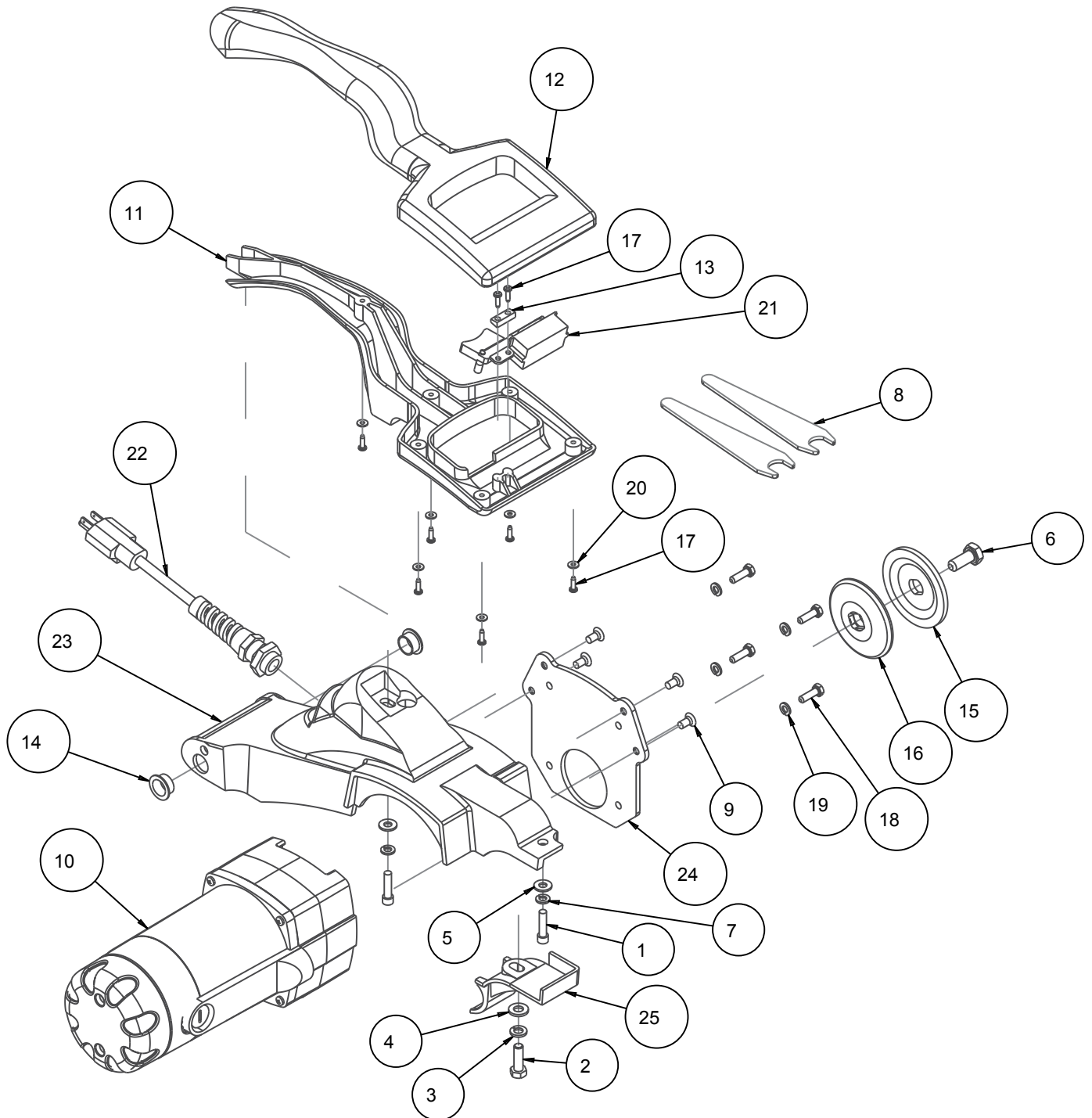
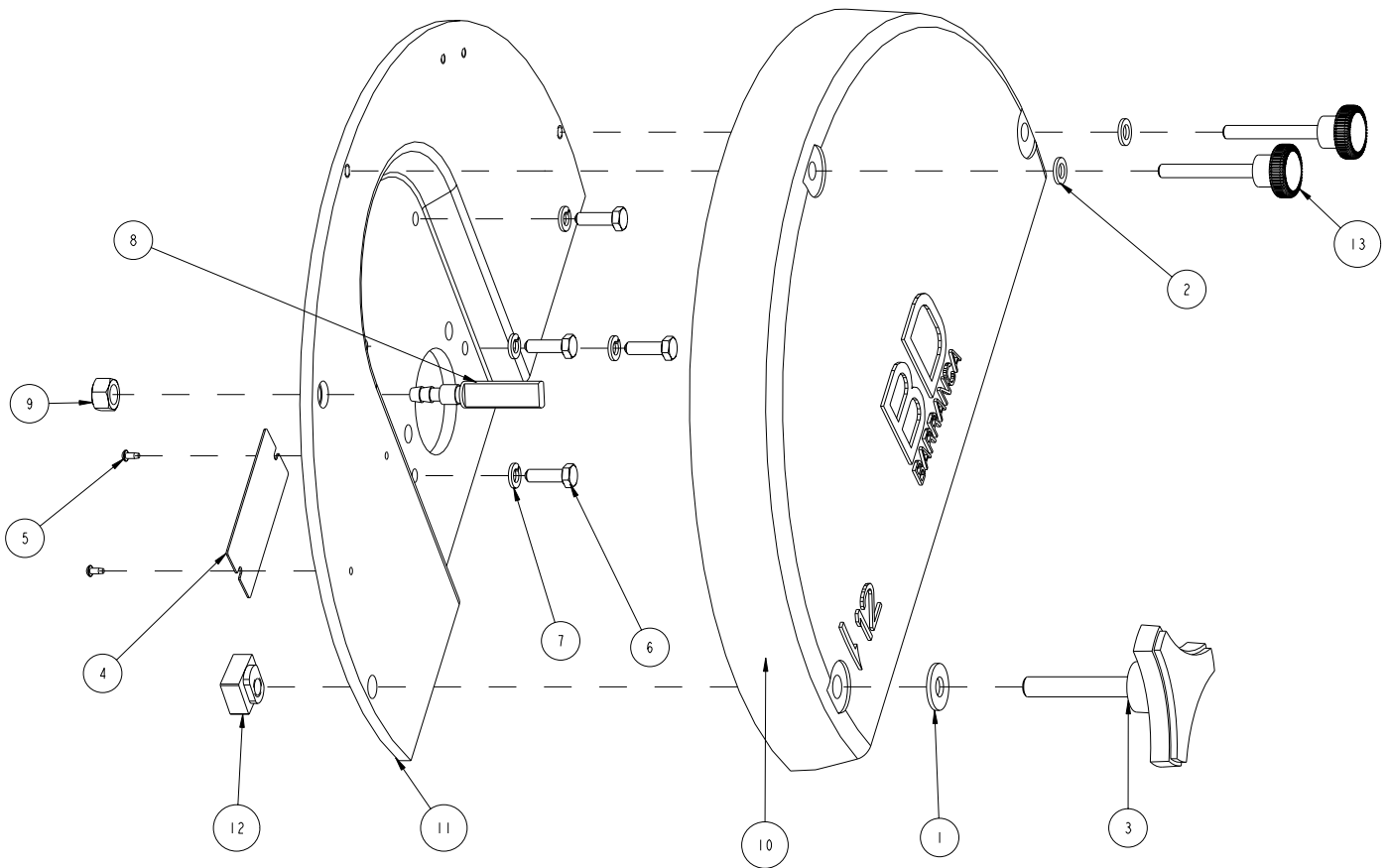


FIGURE 4 BD-1272 TRACK RAIL SAW P/N 166906-NL

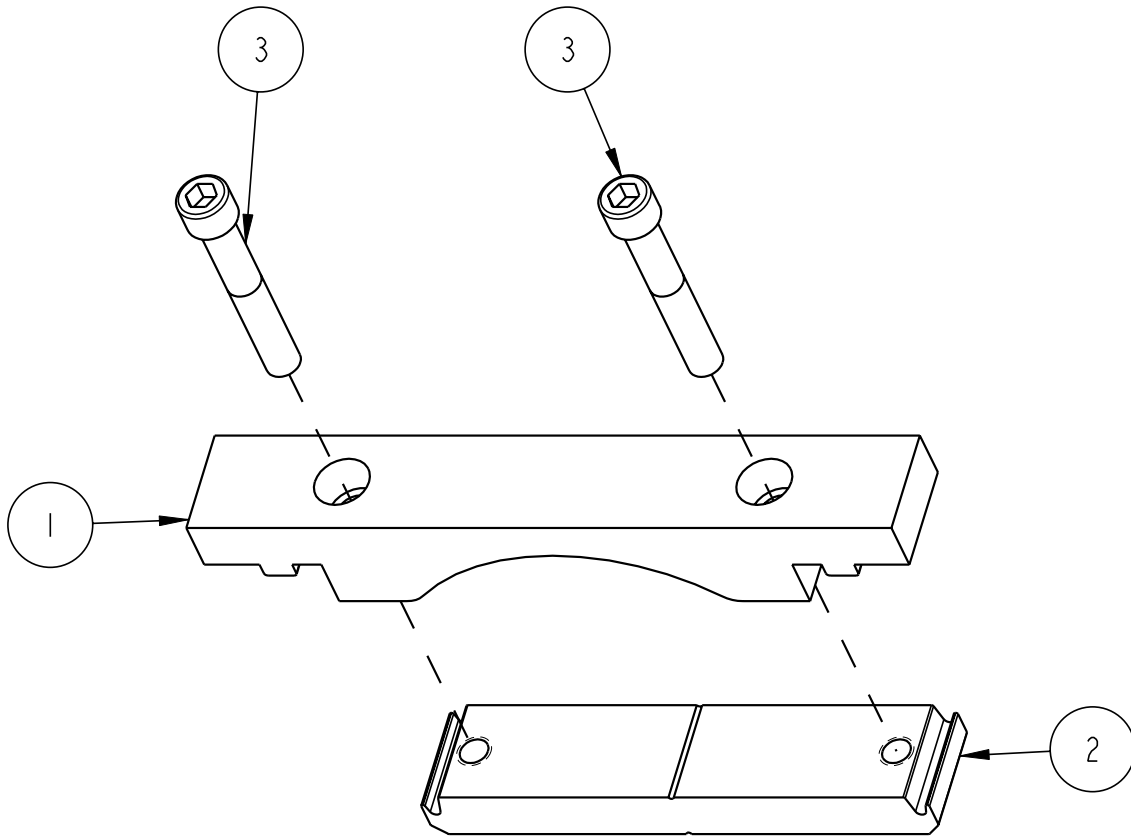
ITEM	DESCRIPTION	PART#	QTY.
1	SCREW, SOC HD CAP, 1/4-20X1	151049	2
2	SCREW, HEX HD, 5/16-18X1	151743	1
3	WASHER, LOCK, SPLIT, 5/16	151747	1
4	WASHER, FLAT, SAE, 5/16	151754	1
5	WASHER, FLAT, SAE, 1/4	151915	2
6	SCREW, M10X1.5 HEX HD CAP	152272	1
7	WASHER, LOCK, SPLIT, 1/4	152591	2
8	WRENCH, TILES AW, 11/16 OPEN END	153450	2
9	SCREW, FLAT HEAD, 1/4-20 X 1/2 PHIL	155812	4
10	MTR, 115V, 15A, AC, NO LOGO	157801-C-NL	1
11	HANDLE, LOWER	157874	1
12	HANDLE, UPPER	157875	1
13	PLATE, SWITCH MOUNTING	157876	1
14	BUSHING, FLANGE	157932	2
15	FLANGE, OUTER	158105	1
16	FLANGE, Ø 3.0 INNER	158106	1
17	SCREW, PAN HD, M3.5X12MM	158156	8
18	SCREW, HEX HEAD CAP, M6X1X20MM	158158	4
19	WASHER, LOCK, SPLIT, M6	158159	4
20	WASHER, FLAT, SAE, #6	158231	6
21	ASSY, SWITCH	158323-MK	1
22	HARNESS, WIRE	158329-R	1
23	CASTING, ARM, -COMP	166098	1
24	PLATE, MOTOR MOUNTING	166099	1
25	COVER, WIRE (COMP)	166101	1

FIGURE 5 BLADE GUARD ASSEMBLY P/N 165499



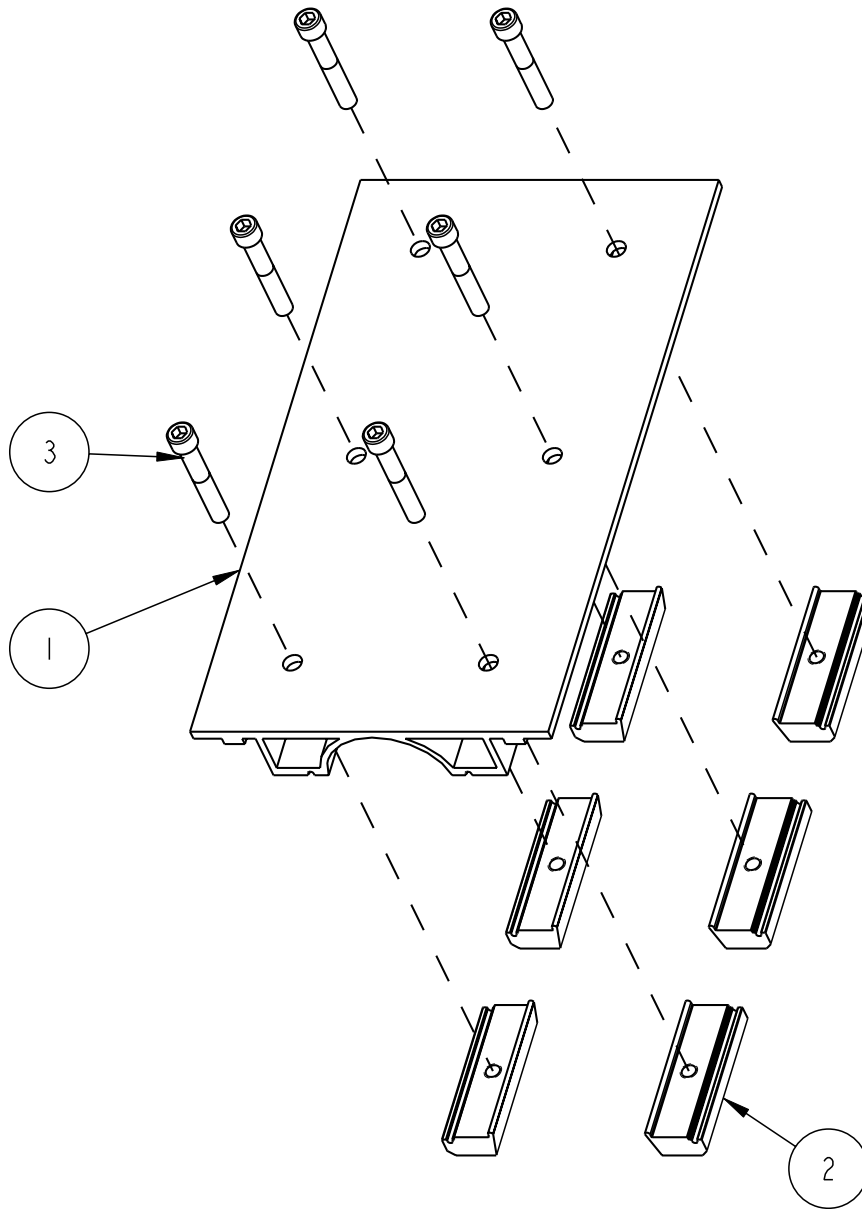
ITEM	DESCRIPTION	PART #	QTY.
1	WASHER, 3/8 SAE FLAT	150923	1
2	WASHER, 1/4 SAE FLAT	151915	2
3	KNOB, TRI PLASTIC, 3/8-16X2-1/4, NO LOGO	56770-04-NL	1
4	TAG, SERIAL #, BLANK	157500	1
5	DRIVE SCREW, #7 X 5/16 ROUND HEAD	157849	2
6	SCREW, HEX HEAD CAP, M6 X 1 X 20MM	158158	4
7	WASHER, SPLIT LOCK, M6	158159	4
8	MANIFOLD, WATER	159854	1
9	NUT, 3/8-16 HEX	159863	1
10	GUARD, BLADE (COMP)	164928	1
11	GUARD, INNER BLADE (COMP)	164930	1
12	NUT, ROUNDED T-SLOT	164945	1
13	KNOB, 1/4-20X2 ROUND	165163	2

FIGURE 6 PARALLEL RAIL SUPPORT BRACKET P/N 165269



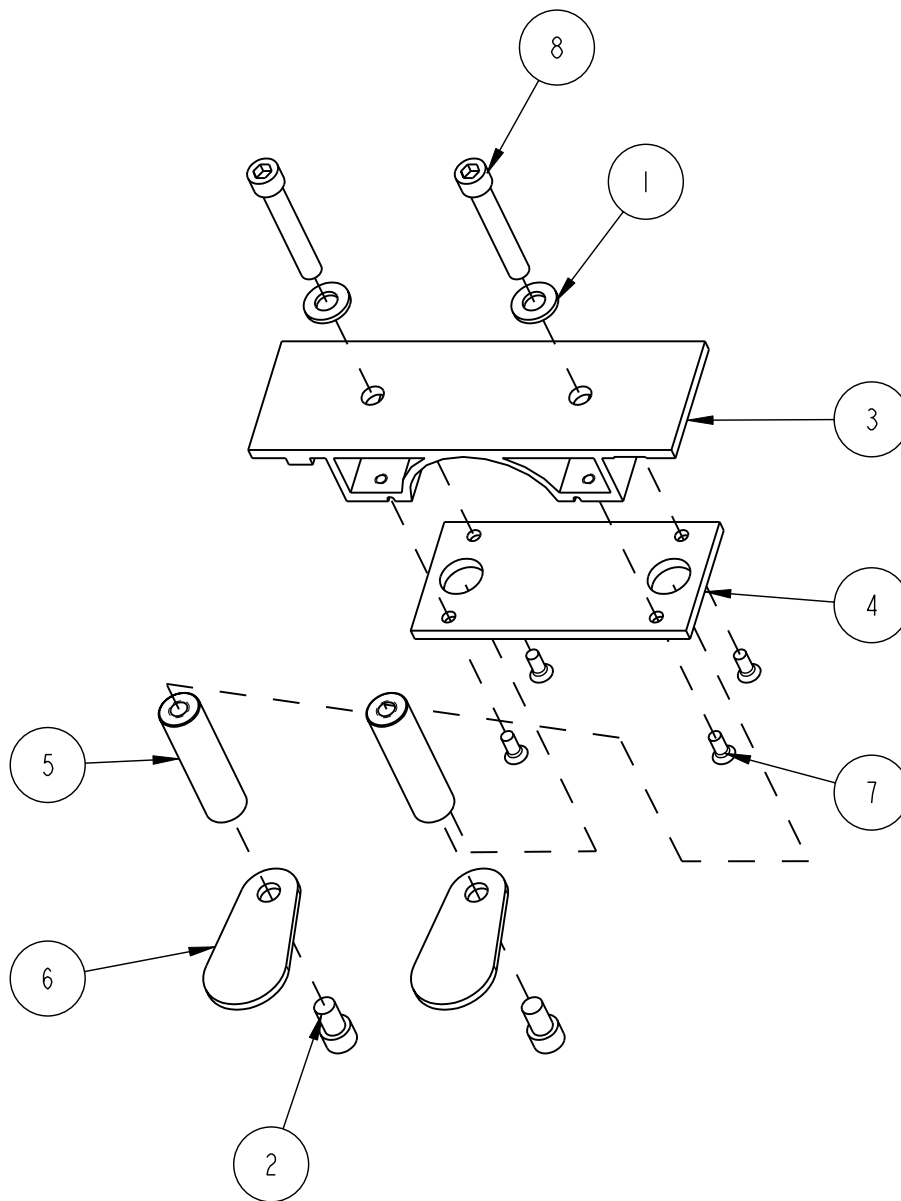
ITEM	DESCRIPTION	PART #	QTY.
1	CLAMP, UPPER RAIL	164939	1
2	CLAMP, LOWER RAIL (COMP)	164942	1
3	SCREW, 5/16-18X2 SOCKET HEAD CAP	165165	2

FIGURE 7 RAIL CONNECTOR PLATE P/N 165268



ITEM	DESCRIPTION	PART #	QTY.
1	PLATE, RAIL CONNECTOR	164936	1
2	SHOE, CONNECTOR (COMP)	164938	6
3	SCREW, 5/16-18X2 SOCKET HEAD CAP	165165	6

FIGURE 8 RAIL SAW MATERIAL CLAMP P/N 165113



ITEM	DESCRIPTION	PART #	QTY.
1	WASHER, 5/16 SAE FLAT	151754	2
2	SCREW, 5/16-18X1/2 SOCKET HEAD CAP	156139	2
3	BASE, MATERIAL CLAMP	165114	1
4	PLATE, MATERIAL CLAMP SUPPORT	165115	1
5	STAND-OFF, THREADED	165116	2
6	FOOT, MATERIAL CLAMP	165117	2
7	SCREW, 10-24 X 3/4 FLAT HEAD PHILLIPS MACHINE	165121	4
8	SCREW, 5/16-18 X 2 SOCKET CAP	165243	2

BARRANCA DIAMOND LIMITED WARRANTY

Please complete the warranty registration card and return. Any problems encountered should be directed to Barranca Diamond Customer Service department at (800) 630-7682 M-F 8am - 5pm PST.

Barranca Diamond warrants to the original retail purchaser for a period of 1 year except as noted, from the date of purchase all products covered by this Warranty to be free of defects in materials and workmanship.

This Warranty shall not apply to any parts that have been subjected to misuse or improper service, that had been damaged in transit or handling, or that have been altered or repaired by unauthorized representatives. This Warranty does not cover defects caused by or resulting from misuse, abuse, neglect or damage caused by accident or the failure to provide reasonable maintenance. This Warranty is void if the product or any of its individual components is altered or modified by the purchaser or if the product is used in a manner or with a blade not recommended by the manufacturer.

Any claim arising under this Warranty must be submitted by the original purchaser within the warranty period specified above, and shall include proof of purchase. During said warranty period Barranca Diamond shall, at its option, either replace or repair, at no charge to the original purchaser, any parts or components that are found to be defective by Barranca Diamond. Barranca Diamond shall not be responsible for or obligated to pay for freight or other transportation related costs or expenses in connection with any defective products or components that are either returned to Barranca Diamond's facility or any authorized repair station and/or any replacement products or components that are shipped from Barranca Diamond pursuant to this Warranty.

Parts and labor needed to maintain products and the replacement of components due to normal wear and tear are the purchaser's responsibility and are not covered by this Warranty. All products or components replaced under warranty become the property of the manufacturer. All replacement parts will be considered to be part of the original product and any warranty on such parts will expire coincidentally with the original Warranty. Barranca Diamond will pay for parts and labor in connection with warranty repairs conducted by Barranca Diamond or its authorized repair centers. Replacement part(s) installed by anyone else will be provided without a charge for such replacement part(s), but this Warranty will not apply to labor charges in connection therewith.

IN NO EVENT SHALL ANY LIABILITY UNDER THIS WARRANTY EXCEED THE REPLACEMENT COST OF ANY DEFECTIVE PRODUCT OR COMPONENT THEREOF, AND BARRANCA DIAMOND SHALL NOT BE LIABLE FOR ANY INCIDENTAL OR CONSEQUENTIAL DAMAGES OR FOR ANY OTHER DAMAGE OR LOSS NOT EXPRESSLY ASSUMED AS SET FORTH HEREIN.

The foregoing constitutes an expressed warranty on the terms set forth above and is the only warranty or warranties applicable to the products it covers. All other warranties, including, without limitation, the implied warranty of merchantability and/or fitness for a particular purpose or use being denied. This limited warranty is expressly in lieu of all other warranties, whether expressed or implied.

Specifics Applicable to Limited Warranty of Diamond Blades and Core Bits:**Laser Welded Blade and Bit Warranty:**

If the laser weld between the segment and the steel core or barrel fails during normal use, the blade or bit will be replaced free of charge. Blades and bits damaged due to careless or improper use are not covered under this warranty.

Brazed Blade, Bit, and Cup Wheel Warranty:

If the brazed bond between the segment and the core, barrel, or cup fails within the first .050 of segment wear, the blade, bit, or cup will be replaced free of charge. Blades, bits, and cup wheels damaged due to careless or improper use are not covered under this warranty.

Continuous Rim Blade Warranty:

If the bond between the rim and the core fails during normal use, the blade will be replaced free of charge. Blades and bits damaged due to careless or improper use are not covered under this warranty.

Exclusions:

Barranca Diamond does not warrant the following components, which carry their own manufacturer's warranty for the indicated periods:

Electric Motors Manufacturer's Warranty

Baldor: 1 year

Ryobi: 1 Year

Soga: 1 Year

Gas Engines Manufacturer's Warranty

Honda: 2 years

Engine Power Information

Engine power ratings are calculated by the individual engine manufacturer and the rating method may vary among engine manufacturers. Barranca Diamond Products makes no claim, representation or Warranty as to the power rating of the engine on this equipment and disclaims any responsibility or liability of any kind whatsoever with respect to the accuracy or the engine power rating. Users are advised to consult the engine manufacturer's owners manual and website for specific information regarding the engine power rating.

REPLACEMENT PARTS

Replacement parts for this tool may be ordered from your Barranca Diamond distributor or directly from Barranca Diamond. Please have the following information ready before calling:

- Model and serial number of the machine
- Date of purchase
- Description of parts being ordered (see parts list)

RETURN MATERIALS PROCEDURE

To expedite the service relative to the return of a product purchased through Barranca Diamond, please have the following information available:

- Model and serial number of the machine
- Date of purchase
- Distributor's name

Then please call Barranca Diamond at (310) 523-5867 or toll free at 800-630-7682 to obtain a Return Goods Authorization number (RGA) authorizing the return.

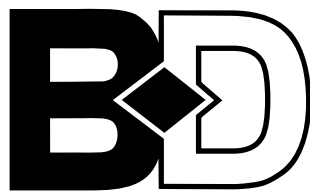
Please Note:

- Ensure your item(s) are prepaid to the destination
- Return items must have been purchased within the previous twelve (12) months
- Follow the packaging instructions in the following section
- Be sure to include the RGA number, return address and your phone number on or within the return shipping box.

PACKAGING INSTRUCTIONS

Ship the equipment using its original shipping crate if possible. Secure inside the shipping crate. Ensure all parts are secured in the packaging to prevent movement. Do not ship the equipment partially exposed.

NOTES



BARRANCA DIAMOND

Barranca Diamond Products, Inc.
1315 Storm Parkway
Torrance, CA 90501

Toll-Free: (800) 421-5830
Phone: (310) 539-5221
Fax: (310) 539-5158
www.barrancadiamond.com